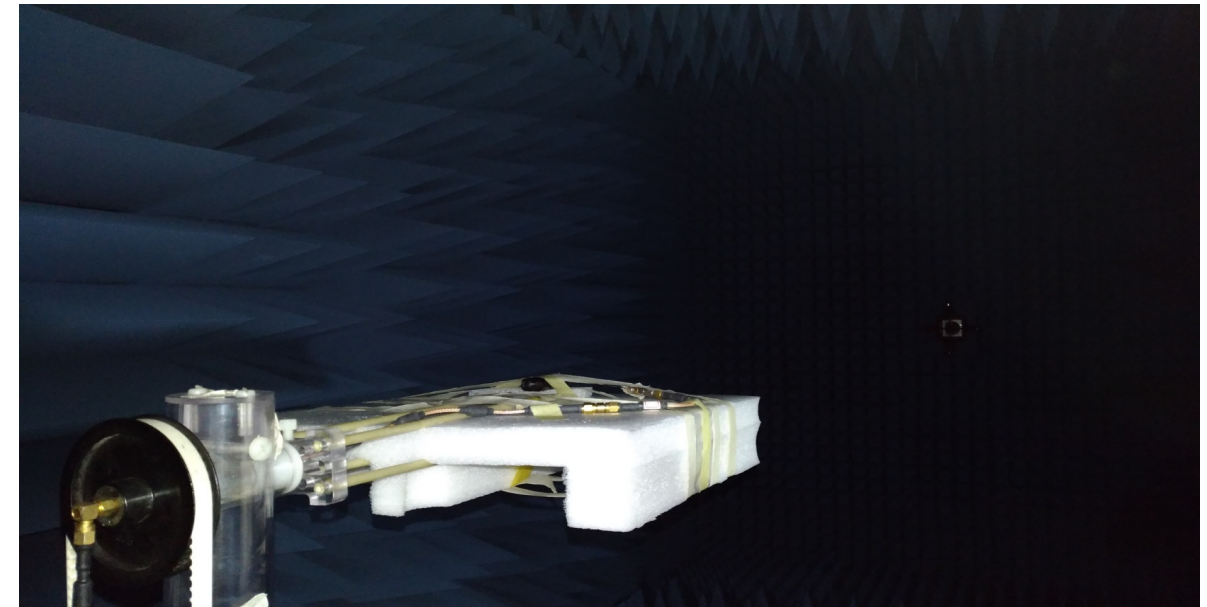
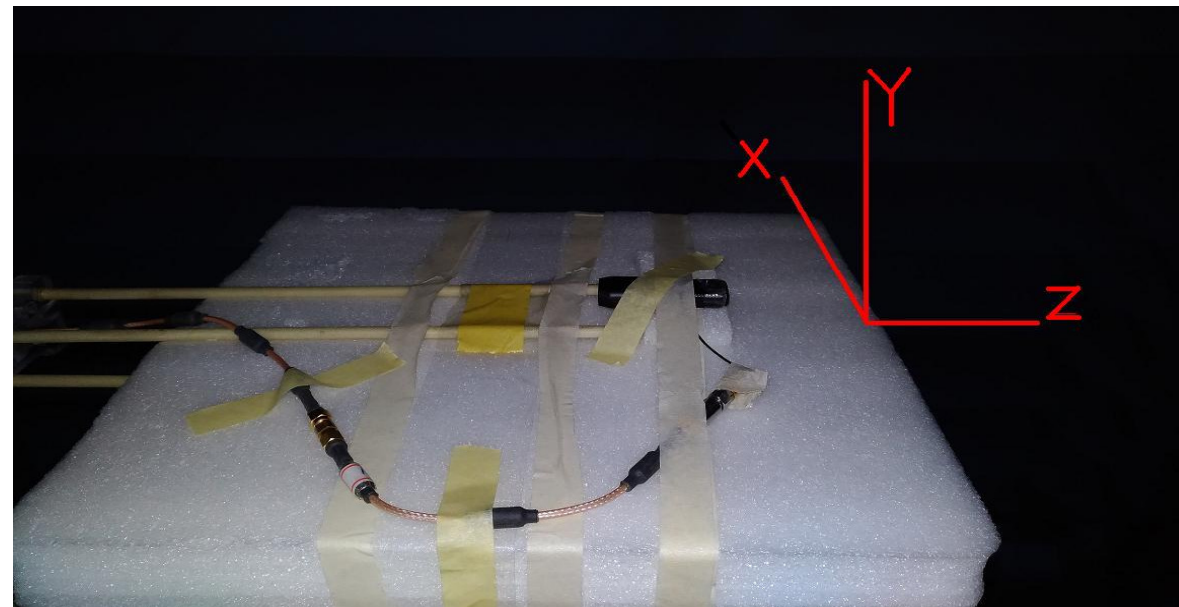
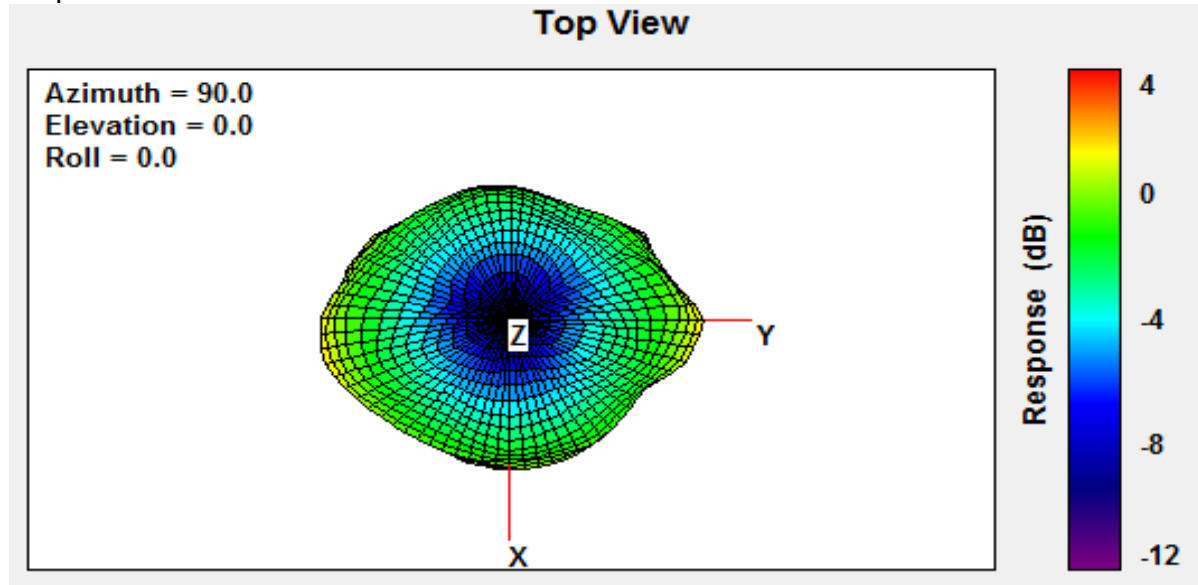


# Antenna Pattern Model: DP383 Donale

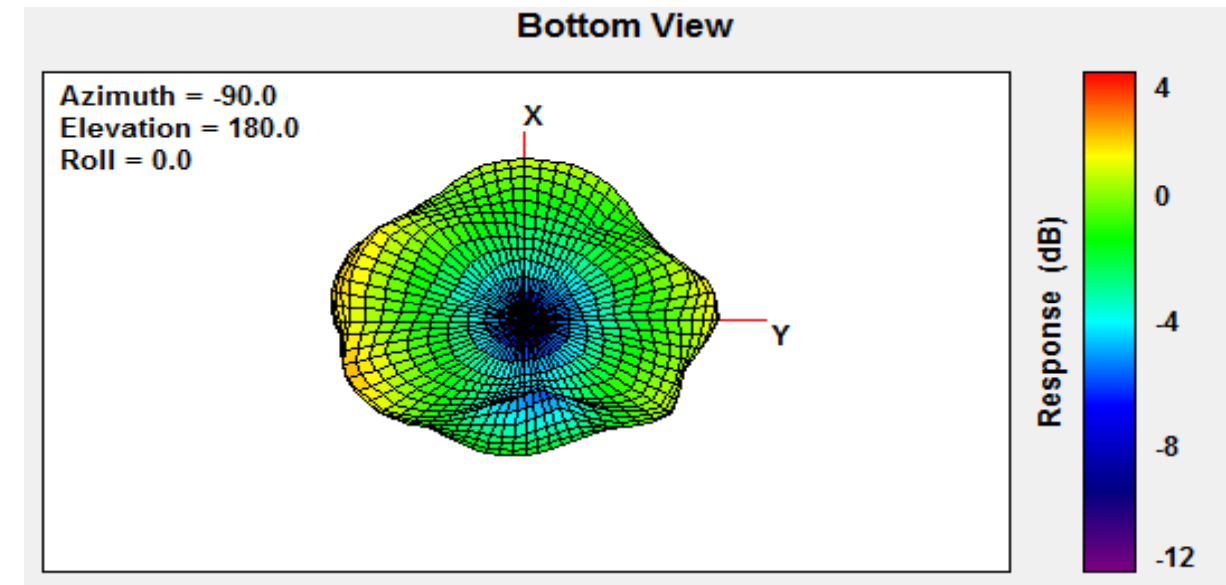
Frequency (MHz)	2400	2405	2410	2415	2420	2425	2430	2435	2440	2445	2450	2455	2460	2465	2470	2475	2480	2485	2490	2495	2500	
Point Values																						
Ant. Port Input Pwr. (dBm)	0	0	0	0	0	0	0	0	0	0	0	0	0	0	0	0	0	0	0	0	0	0
Tot. Rad. Pwr. (dBm)	-2.6144	-2.49388	-2.46194	-2.43977	-2.4609	-2.51615	-2.61507	-2.62342	-2.62945	-2.58248	-2.52484	-2.42142	-2.26499	-2.1384	-2.03827	-1.90659	-1.86171	-1.88841	-1.9263	-2.0378	-2.17474	
Peak EIRP (dBm)	1.6706	1.74182	1.84828	1.76467	1.67508	1.59432	1.52641	1.37406	1.35301	1.3924	1.47552	1.62473	1.84314	1.87862	2.10591	2.21359	2.21692	2.36147	2.2167	2.06964	1.89965	
Directivity (dBi)	4.285	4.2357	4.31021	4.20444	4.13598	4.11046	4.14148	3.99748	3.98246	3.97489	4.00036	4.04615	4.10813	4.01703	4.14418	4.12018	4.07863	4.24988	4.143	4.10744	4.07439	
Efficiency (dB)	-2.6144	-2.49388	-2.46194	-2.43977	-2.4609	-2.51615	-2.61507	-2.62342	-2.62945	-2.58248	-2.52484	-2.42142	-2.26499	-2.1384	-2.03827	-1.90659	-1.86171	-1.88841	-1.9263	-2.0378	-2.17474	
Efficiency (%)	54.7722	56.3135	56.7292	57.0194	56.7426	56.0254	54.7637	54.6585	54.5827	55.1762	55.9134	57.2609	59.361	61.1167	62.5422	64.4676	65.1372	64.738	64.1756	62.549	60.6074	
Gain (dBi)	1.6706	1.74182	1.84828	1.76467	1.67508	1.59432	1.52641	1.37406	1.35301	1.3924	1.47552	1.62473	1.84314	1.87862	2.10591	2.21359	2.21692	2.36147	2.2167	2.06964	1.89965	
NHPRP $\pm$ Pi/4 (dBm)	-3.38719	-3.27075	-3.24149	-3.21541	-3.23684	-3.29487	-3.3949	-3.40114	-3.40434	-3.35086	-3.28573	-3.17786	-3.0139	-2.87852	-2.77903	-2.63778	-2.58587	-2.60392	-2.63838	-2.74876	-2.87899	
NHPRP $\pm$ Pi/6 (dBm)	-4.60918	-4.48548	-4.4538	-4.43404	-4.45737	-4.52056	-4.61959	-4.62953	-4.62743	-4.56537	-4.48555	-4.37364	-4.20018	-4.05254	-3.94675	-3.79529	-3.73671	-3.75168	-3.78564	-3.9007	-4.0254	
NHPRP $\pm$ Pi/8 (dBm)	-5.63322	-5.5016	-5.47139	-5.45187	-5.48103	-5.54664	-5.64571	-5.65979	-5.65316	-5.58957	-5.50263	-5.38929	-5.21119	-5.05772	-4.94818	-4.79298	-4.73412	-4.75167	-4.78834	-4.90505	-5.03159	
Upper Hem. PRP (dBm)	-6.73355	-6.64451	-6.62338	-6.62221	-6.65753	-6.7403	-6.83808	-6.84535	-6.84598	-6.79586	-6.72945	-6.63145	-6.46968	-6.34687	-6.26691	-6.13842	-6.11262	-6.15632	-6.20568	-6.32726	-6.47958	
Lower Hem. PRP (dBm)	-4.74216	-4.60185	-4.56316	-4.528	-4.54038	-4.57881	-4.67843	-4.68743	-4.69675	-4.65171	-4.59943	-4.49269	-4.33952	-4.21063	-4.0982	-3.96459	-3.90818	-3.92468	-3.95573	-4.06123	-4.18908	



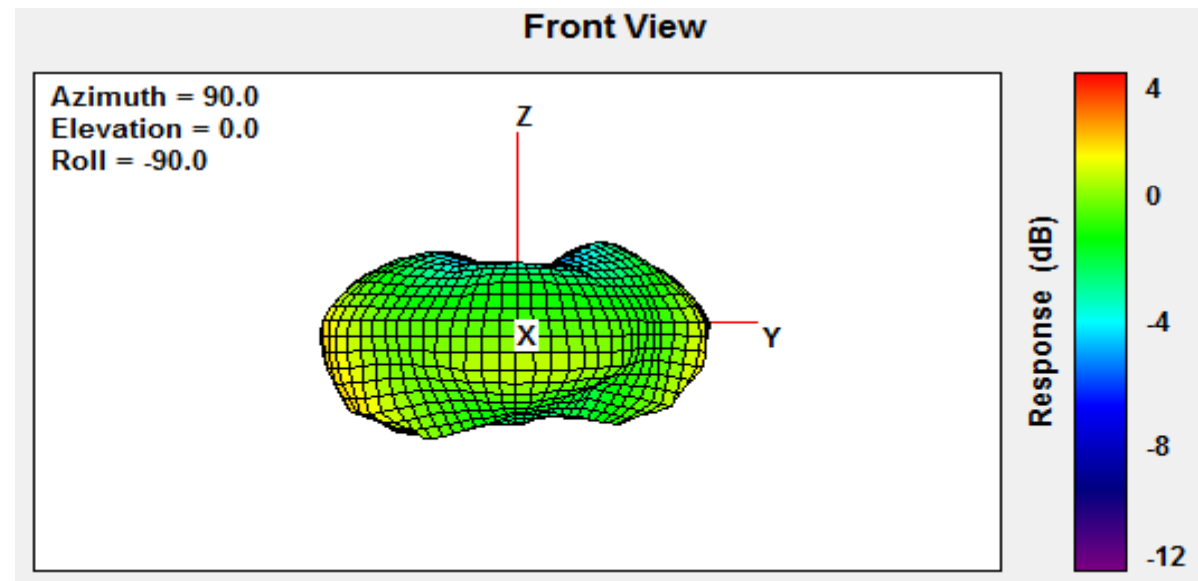
Top



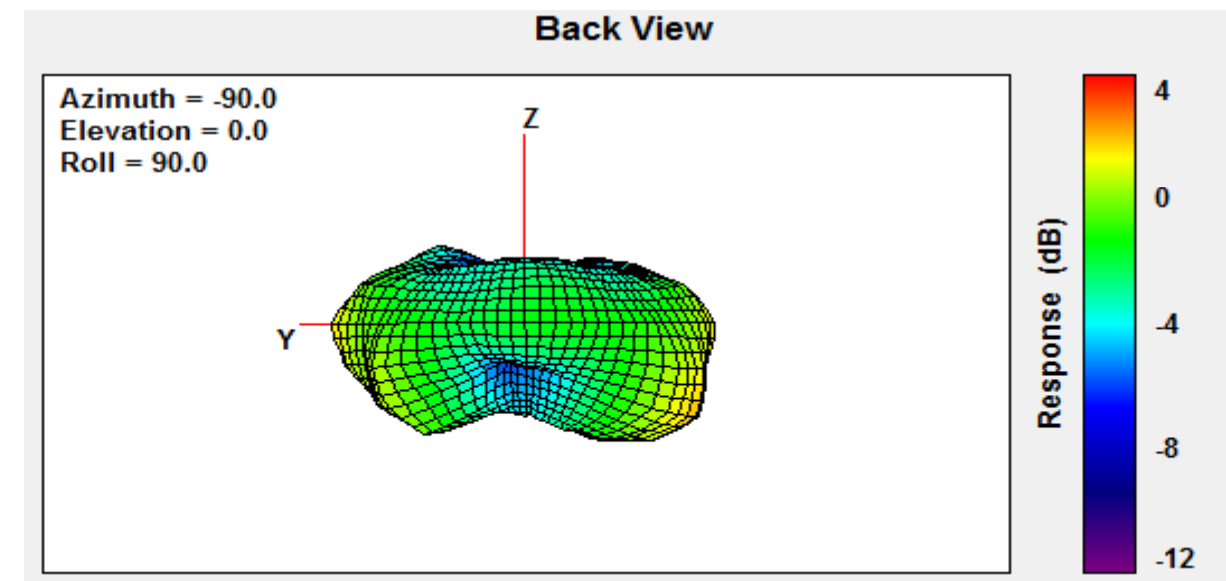
Bottom



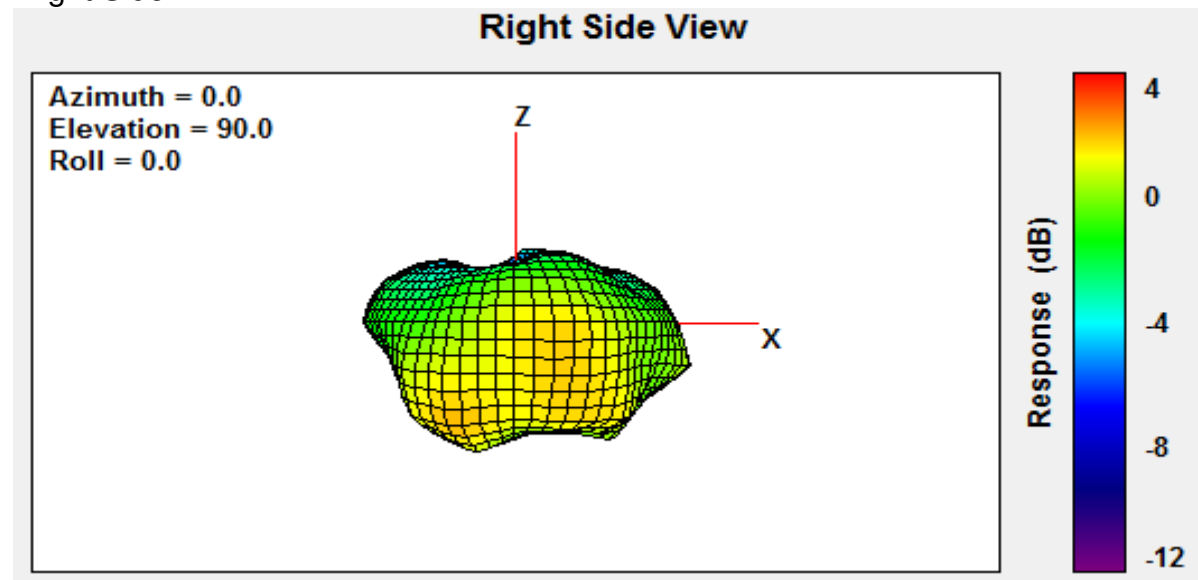
Front



Back



Right Side



Left Side

