



Appendix B. System Performance Check

Tissue Calibration Result :

6.1.3

Frequency (MHz)	Liquid Temp	Measured Values (W/kg)		Target Values (W/kg)		Deviation[%]		Limit	Measured. Date
		σ	ϵ_r (e')	σ	ϵ_r (e')	1g	10g	%	
2450	21.4	1.82	41	1.8	39.2	1.11%	4.59%	±5%	2023/12/12

Result of System Performance Check :

6.1.7

Frequency (MHz)	Dipole S/N	Measured SAR Values (W/kg)		Target SAR Values (W/kg)		Deviation[%]		Limit	Measured. Date
		1g	10g	1g	10g	1g	10g	%	
2450	914	12.3	5.85	13	5.92	-5.38%	-1.18%	±10%	2023/12/12



System Performance Check Report

Summary

Dipole	Frequency [MHz]
D2450V2 - SN914	2450.0

Exposure Conditions

Phantom Section, TSL	Test Distance [mm]	Band	Group, UID	Frequency [MHz], Channel Number	Conversion Factor	TSL Conductivity [S/m]	TSL Permittivity
Flat, HSL	10		CW, 0--	2450.000, 0	7.97	1.82	41.0

Hardware Setup

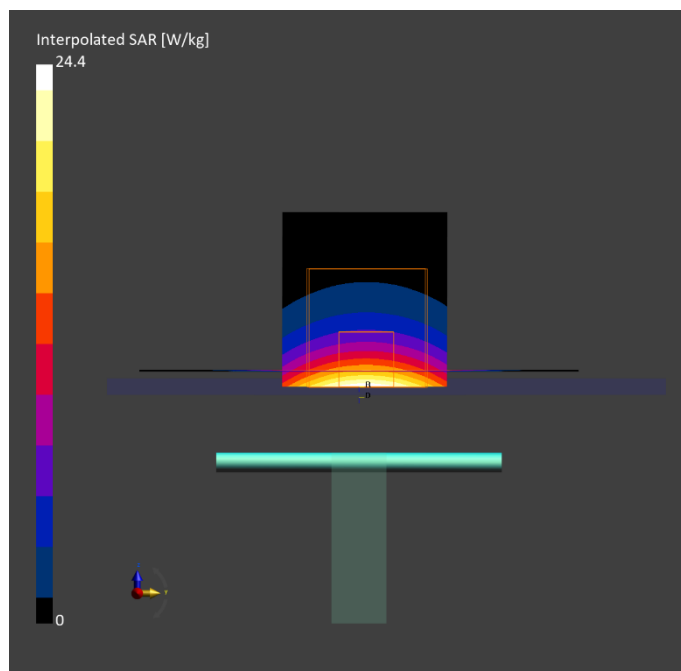
Phantom	TSL, Measured Date	Probe, Calibration Date	DAE, Calibration Date
ELI V5.0 (20deg probe tilt) 1211	HSL2450	EX3DV4 - SN3927, 2023-06-26	DAE4 Sn1379, 2023-06-16

Scan Setup

	Area Scan	Zoom Scan
Grid Extents [mm]	40.0 x 80.0	30.0 x 30.0 x 30.0
Grid Steps [mm]	10.0 x 10.0	5.0 x 5.0 x 1.5
Sensor Surface [mm]	3.0	1.4

Measurement Results

	Area Scan	Zoom Scan
Date	2023-12-12	2023-12-12
psSAR1g [W/Kg]	12.5	12.3
psSAR10g [W/Kg]	5.86	5.85
Power Drift [dB]	0.00	0.03
TSL Correction	No correction	No correction



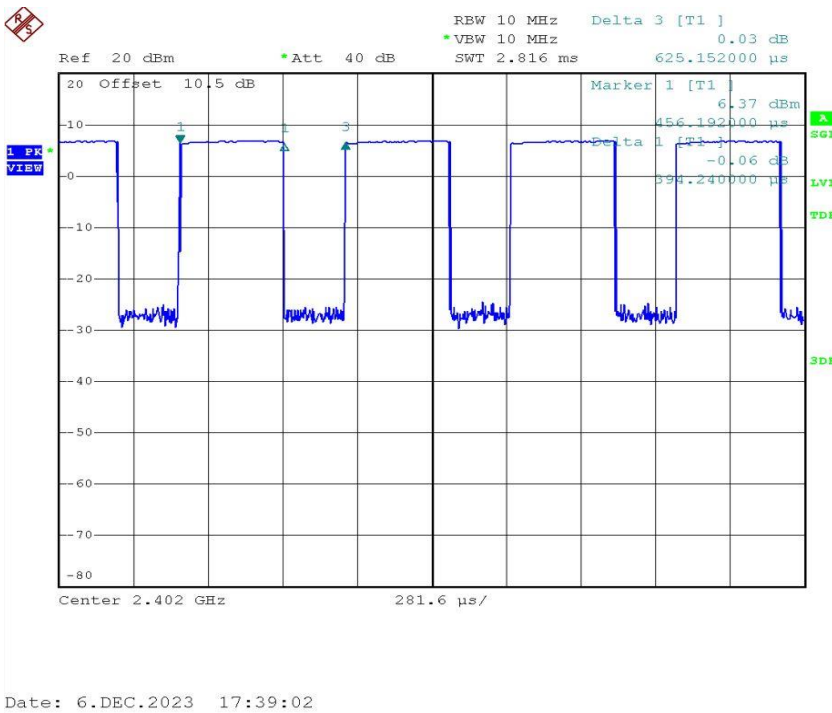


Appendix C. Measured Conducted Power

DTS:

Frequency	Modulation	Channel	Data Rate	Conducted Power	Target power	EIRP power
2402	GFSK	0	1M	6.43	6.5	9.73
2440	GFSK	19	1M	6.75	7.0	10.05
2480	GFSK	39	1M	6.61	7.0	9.91

Result for duty cycle test



Modulation Type	On Time (ms)	Period Time (ms)	Duty Cycle (%)
GFSK(1MBps)	0.39	0.63	63.06%



Appendix D. SAR Measurement Data



<SAR>

Plot.No	Band	Mode	Channel	Frequency (MHz)	Data Rate	Test Position	Gap (mm)	Avg Power (dBm)	Tune-up (dBm)	EIRP Power (dBm)	Duty Cycle (%)	SAR 1g (W/Kg)	Reported SAR 1g (W/Kg)
	DTS	GFSK	19	2440	1M	Horizontal Up	0	6.75	7.00	10.05	63.06	0.115	0.19
	DTS	GFSK	19	2440	1M	Horizontal Down	0	6.75	7.00	10.05	63.06	0.126	0.21
	DTS	GFSK	19	2440	1M	Vertical Front	0	6.75	7.00	10.05	63.06	0.024	0.04
	DTS	GFSK	19	2440	1M	Vertical Back	0	6.75	7.00	10.05	63.06	0.008	0.01
	DTS	GFSK	0	2402	1M	Tip Mode	0	6.43	6.50	9.73	63.06	0.114	0.18
1	DTS	GFSK	19	2440	1M	Tip Mode	0	6.75	7.00	10.05	63.06	0.141	0.24
	DTS	GFSK	39	2480	1M	Tip Mode	0	6.61	7.00	9.91	63.06	0.137	0.24



01_DTS_GFSK_CH19_1M_Tip_0mm

Device under Test Properties

Exposure Conditions

Phantom	Position, Test	Band	Group,	Frequency [MHz],	Conversion	TSL Conductivity	TSL
Section, TSL	Distance [mm]		UID	Channel Number	Factor	[S/m]	Permittivity
Flat,	FRONT,	ISM 2.4	Bluetooth,	2440.000,	7.97	1.81	41.0
HSL	0.00	GHz Band	10032-CAA	19			

Hardware Setup

Phantom	TSL, Measured Date	Probe, Calibration Date	DAE, Calibration Date
ELI V5.0 (20deg probe tilt) 1211	HSL2450	EX3DV4 - SN3927, 2023-06-26	DAE4 Sn1379, 2023-06-16

Scan Setup

	Area Scan	Zoom Scan
Grid Extents [mm]	36.0 x 100.0	30.0 x 30.0 x 30.0
Grid Steps [mm]	6.0 x 10.0	5.0 x 5.0 x 1.5
Sensor Surface [mm]	3.0	1.4

Measurement Results

	Area Scan	Zoom Scan
Date	2023-12-12	2023-12-12
psSAR1g [W/kg]	0.149	0.141
psSAR10g [W/kg]	0.065	0.060
Power Drift [dB]	-0.01	-0.03
M2/M1 [%]		78.9
Dist 3dB Peak [mm]		8.0

