

D

D

C

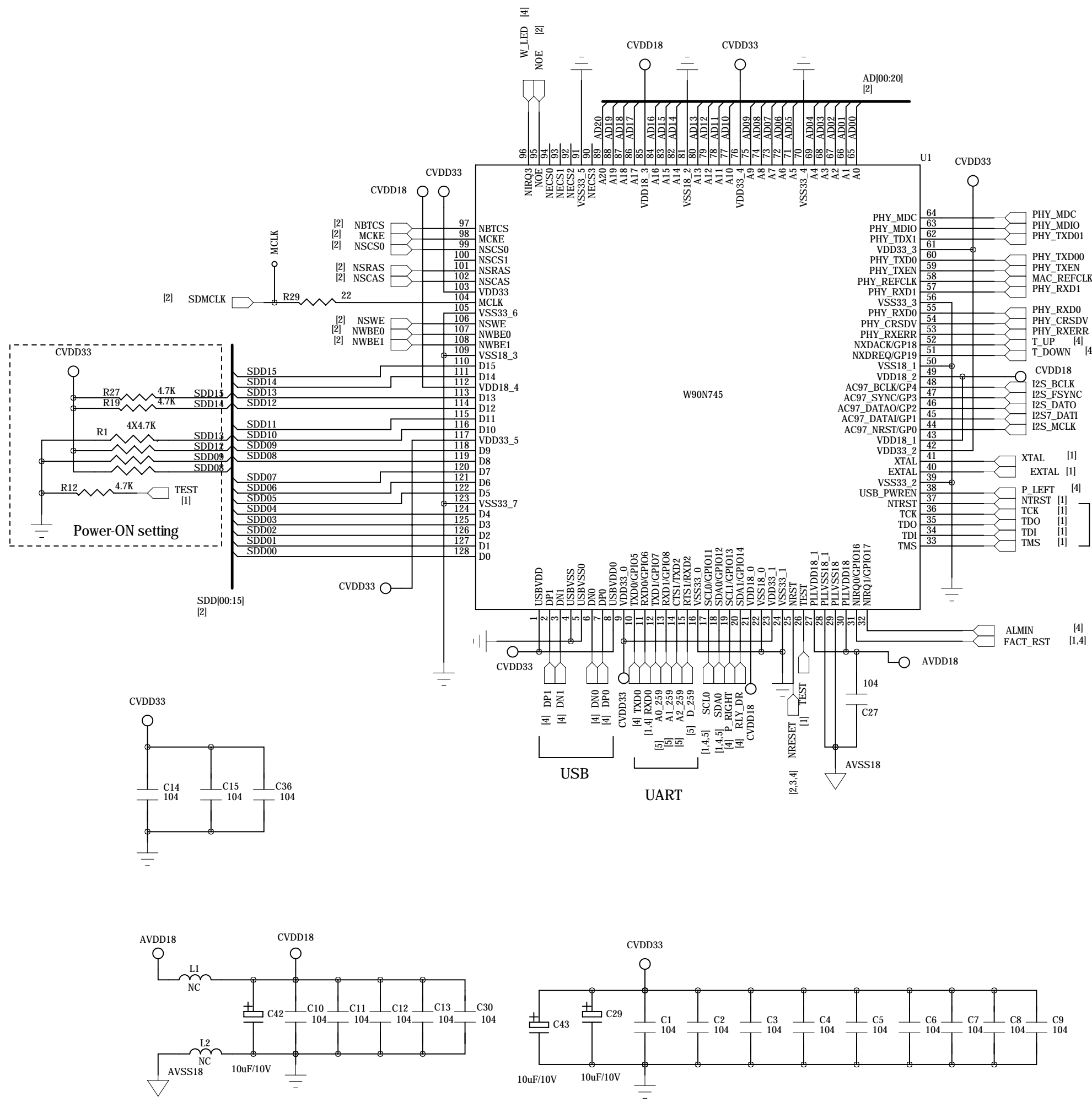
C

B

B

A

A



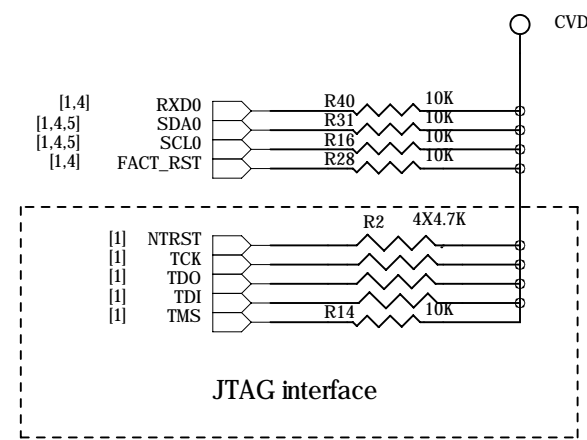
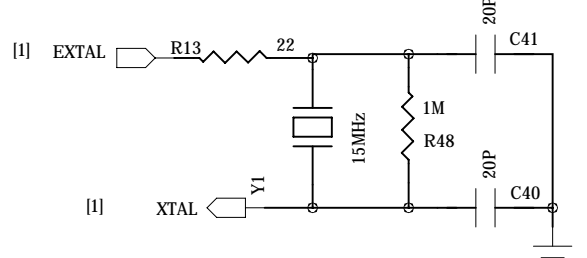
LAN interface

PT control

JTAG

USB

UART



TITLE:	MPU-W90N745		
CODE:	NETWAVE TECH. LTD.	DRAWING NO: 20070718HX	REV: V1.0
SCALE:			SHEET: 1 OF 4

6

5

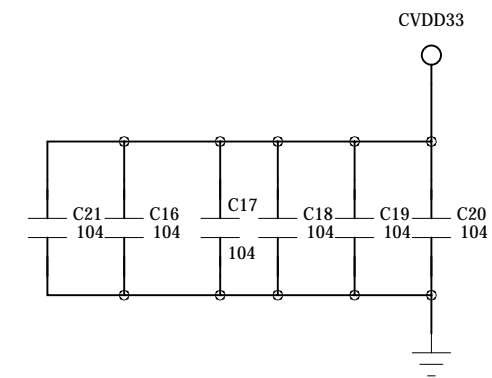
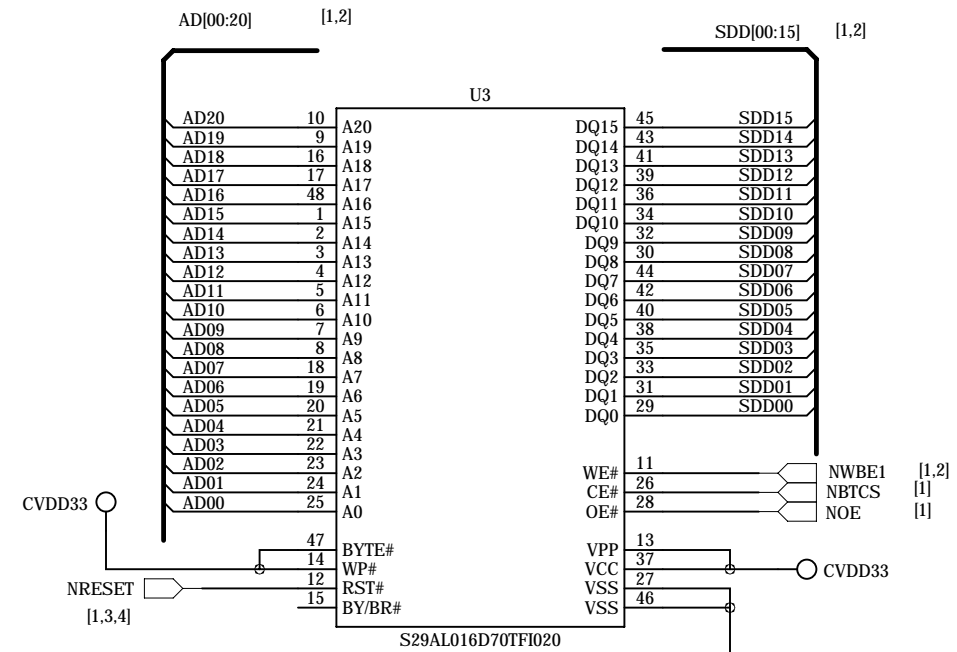
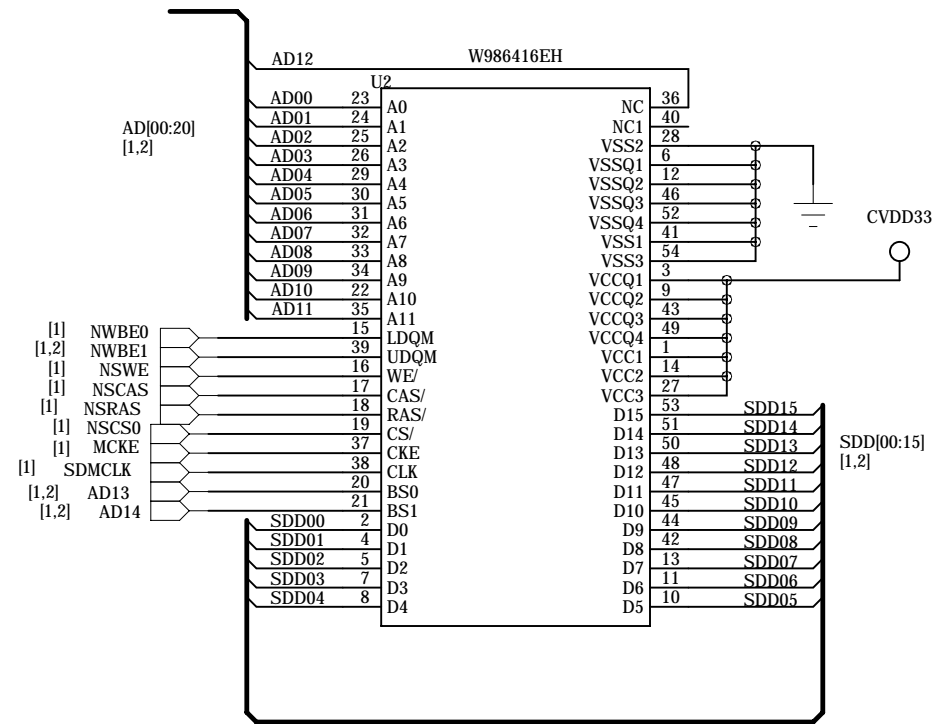
4

3

2

1

REVISION RECORD			
LTR	ECO NO:	APPROVED:	DATE:



COMPANY: **NETWAVE TECH. LTD.**

TITLE: **SDRAM&ROM**

DRAWN:	DATED:
CHECKED:	DATED:
QUALITY CONTROL:	DATED:
RELEASED:	DATED:

CODE:	SIZE: A3	DRAWING NO:	REV: V1.2
SCALE:			SHEET: 2 OF 4

6

5

4

3

2

1

D

D

C

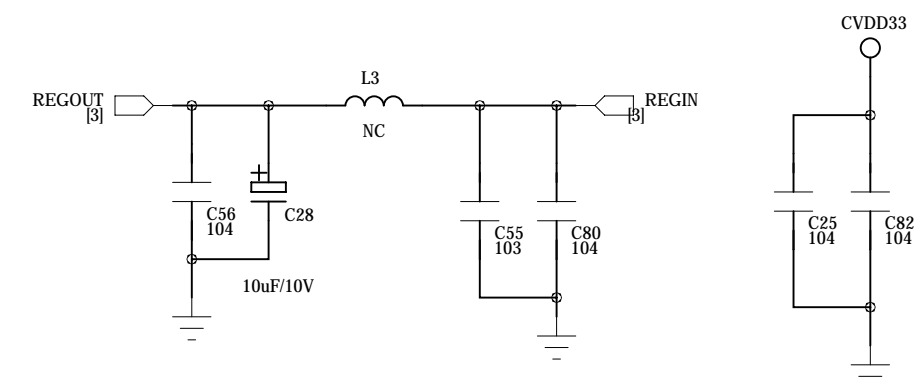
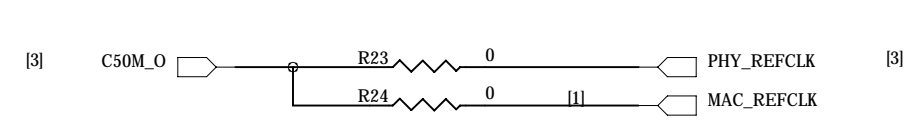
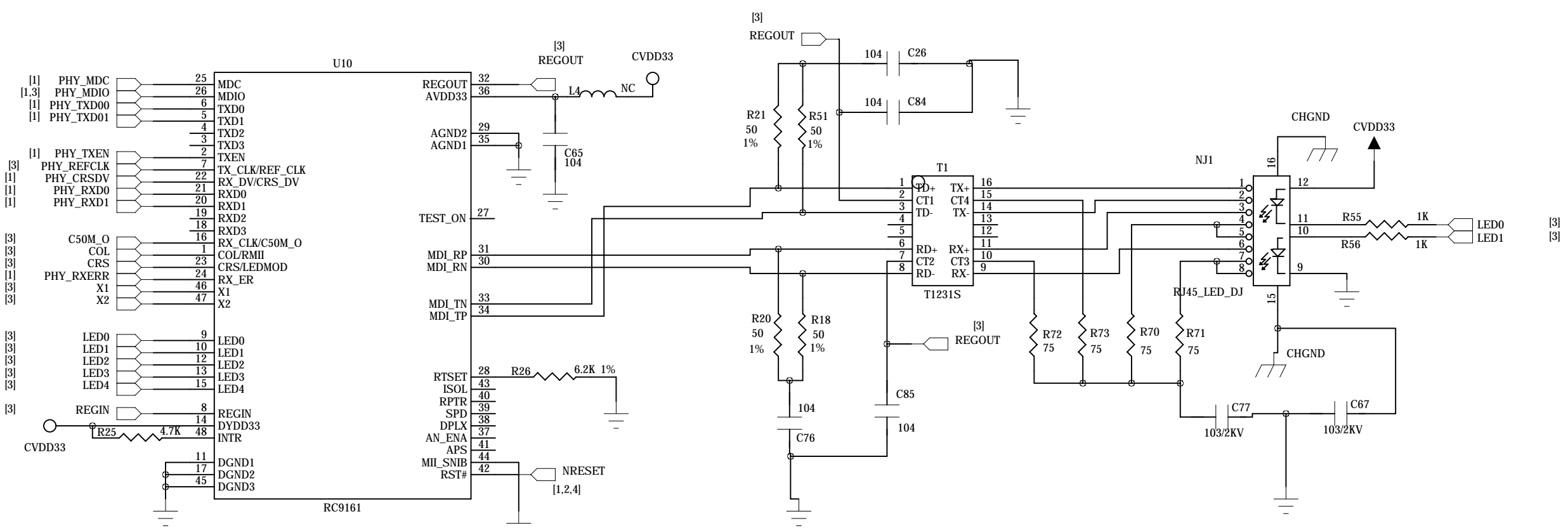
C

B

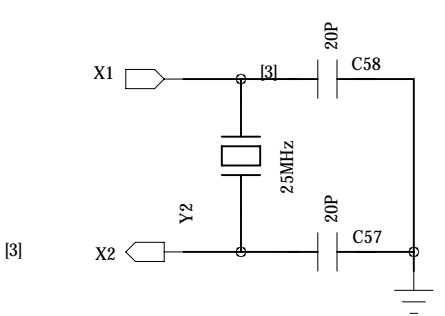
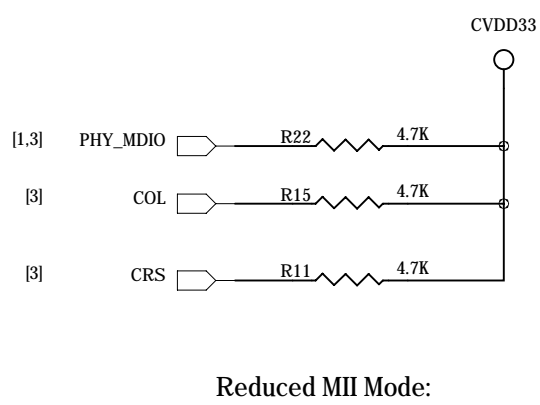
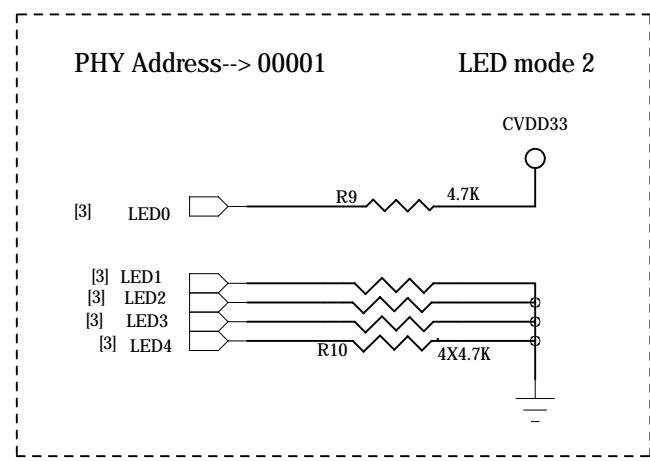
B

A

A



Power-on Settings & LED display



		REV:
SCALE:	SHEET: 3 OF 5	

6

5

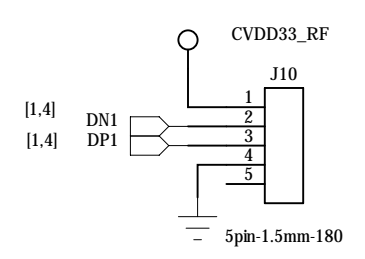
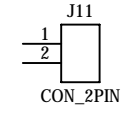
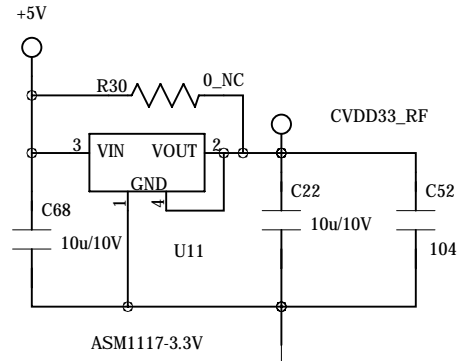
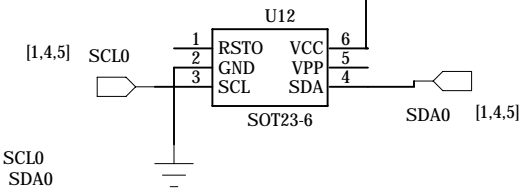
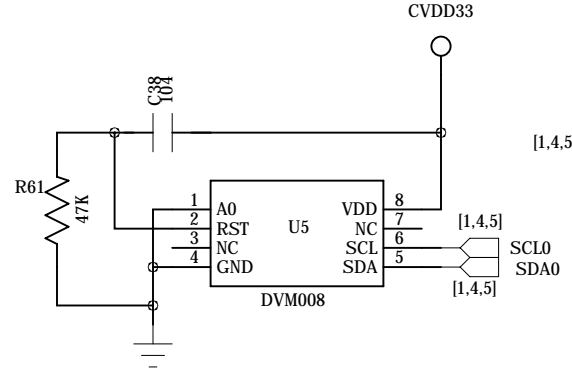
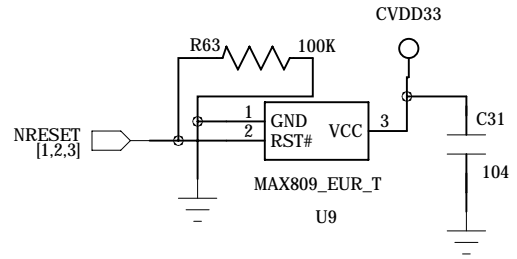
4

3

2

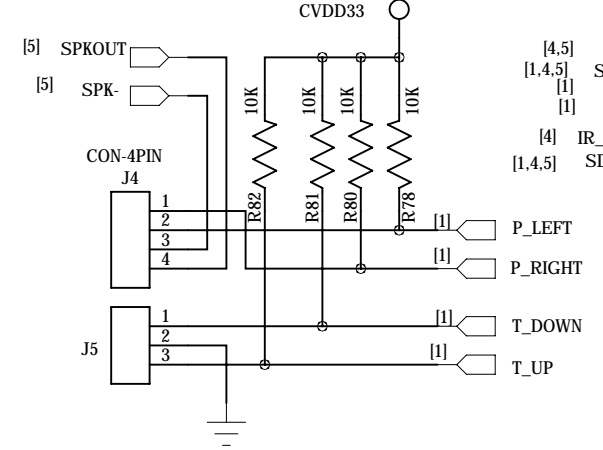
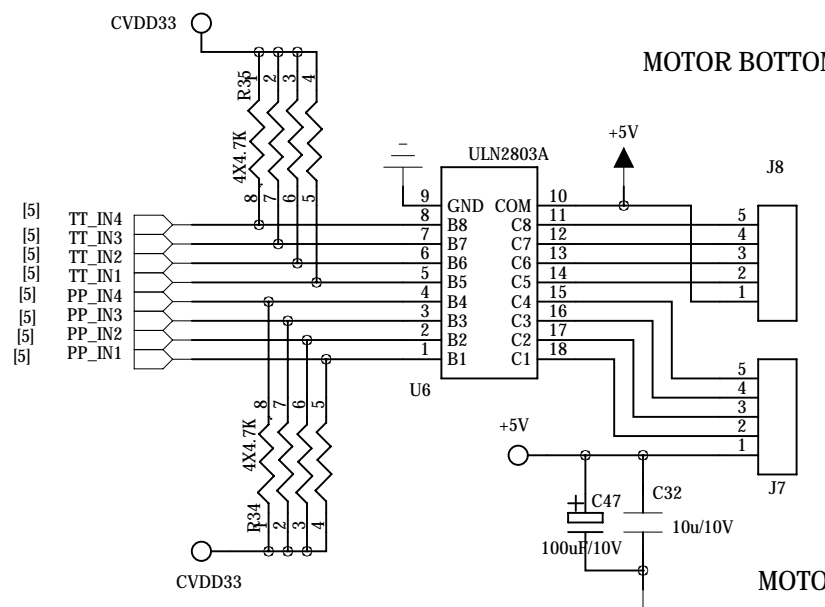
1

RESET & WATCHDOG

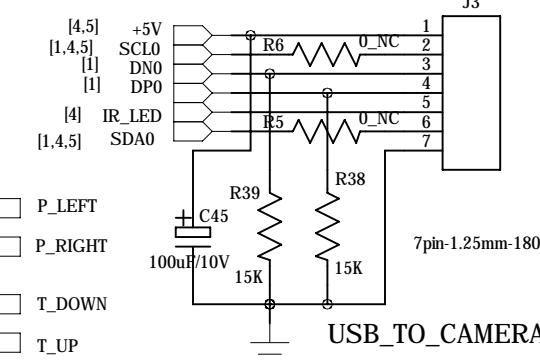


Holder for RF module

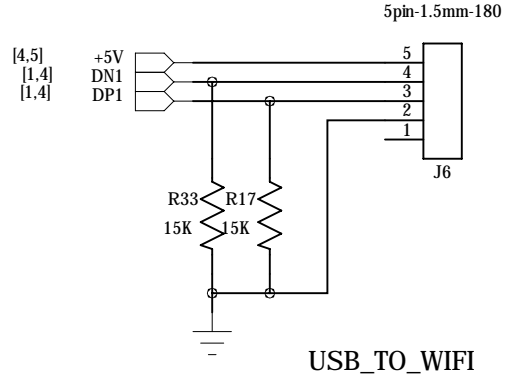
MOTOR BOTTOM



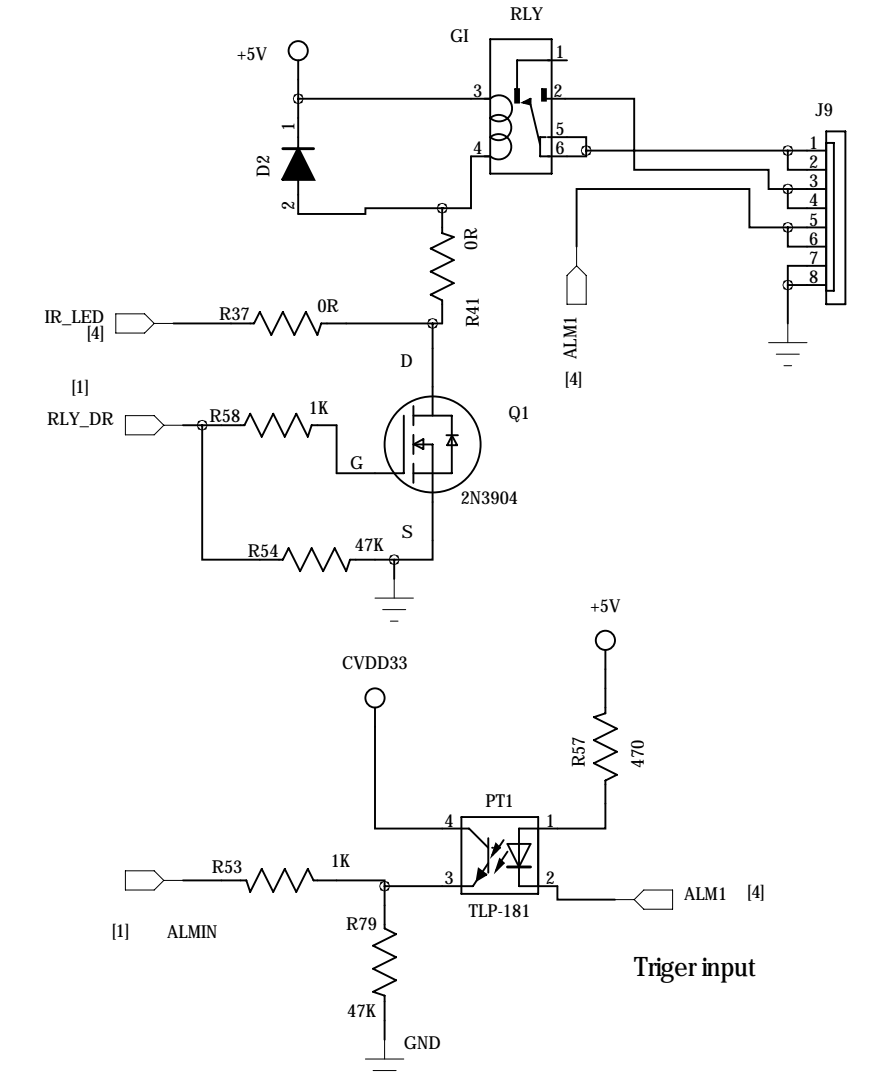
MOTOR TOP



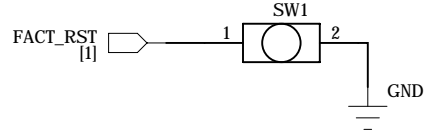
USB_TO_CAMERA



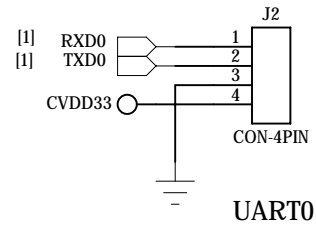
USB_TO_WIFI



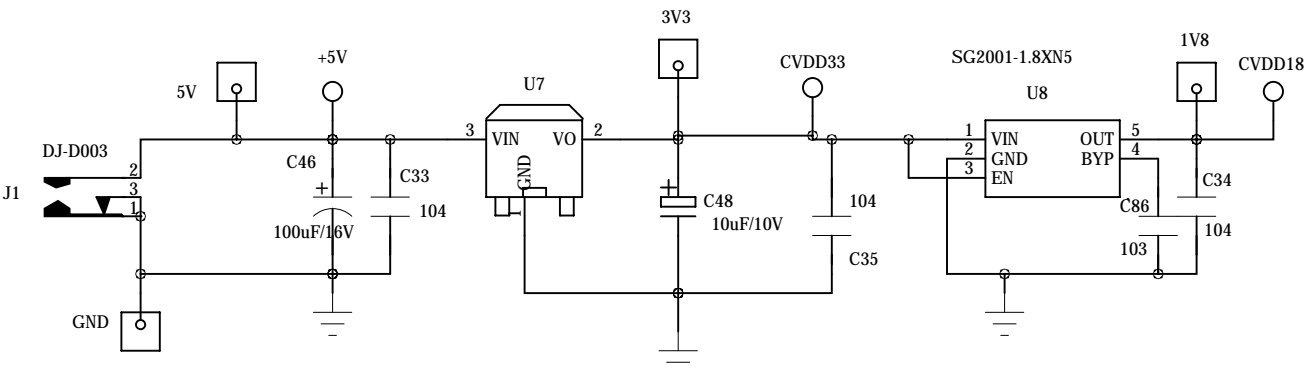
Trigger input



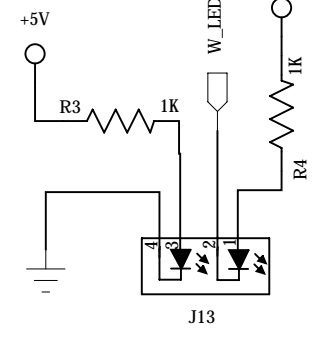
Reset for default setting



UART0



POWER



J13

COMPANY:			
NETWAVE Tech. Ltd.			
TITLE:			
PWR&RST&INTERFACE			
CODE:	SIZE:	DRAWING NO:	REV:
	A3		V2.0
SCALE:			SHEET: 4 OF 4
2006/10/19/hx			

6

5

4

3

2

1

D

D

C

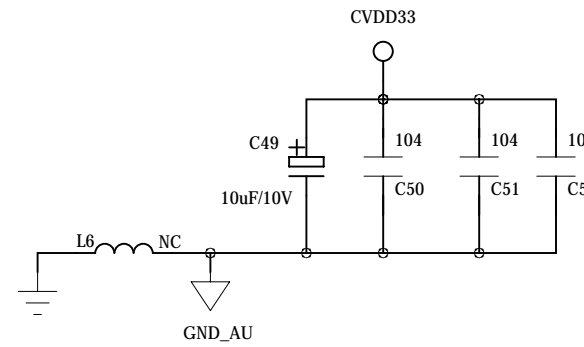
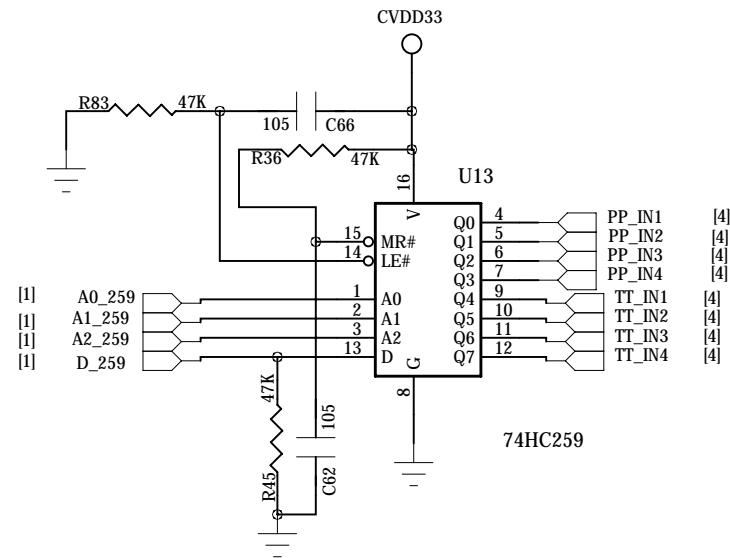
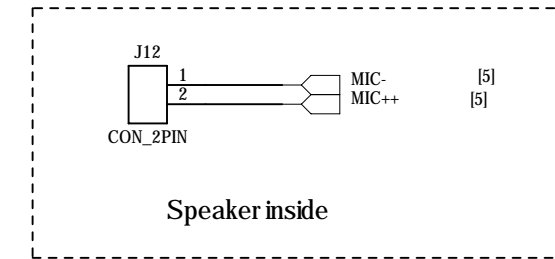
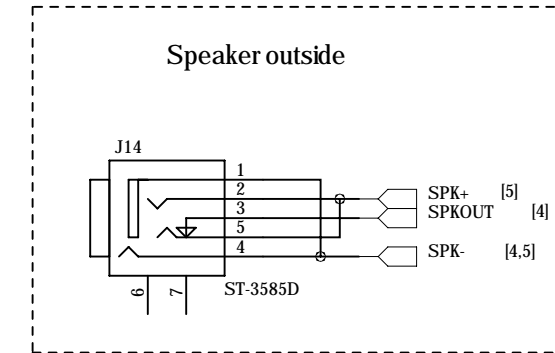
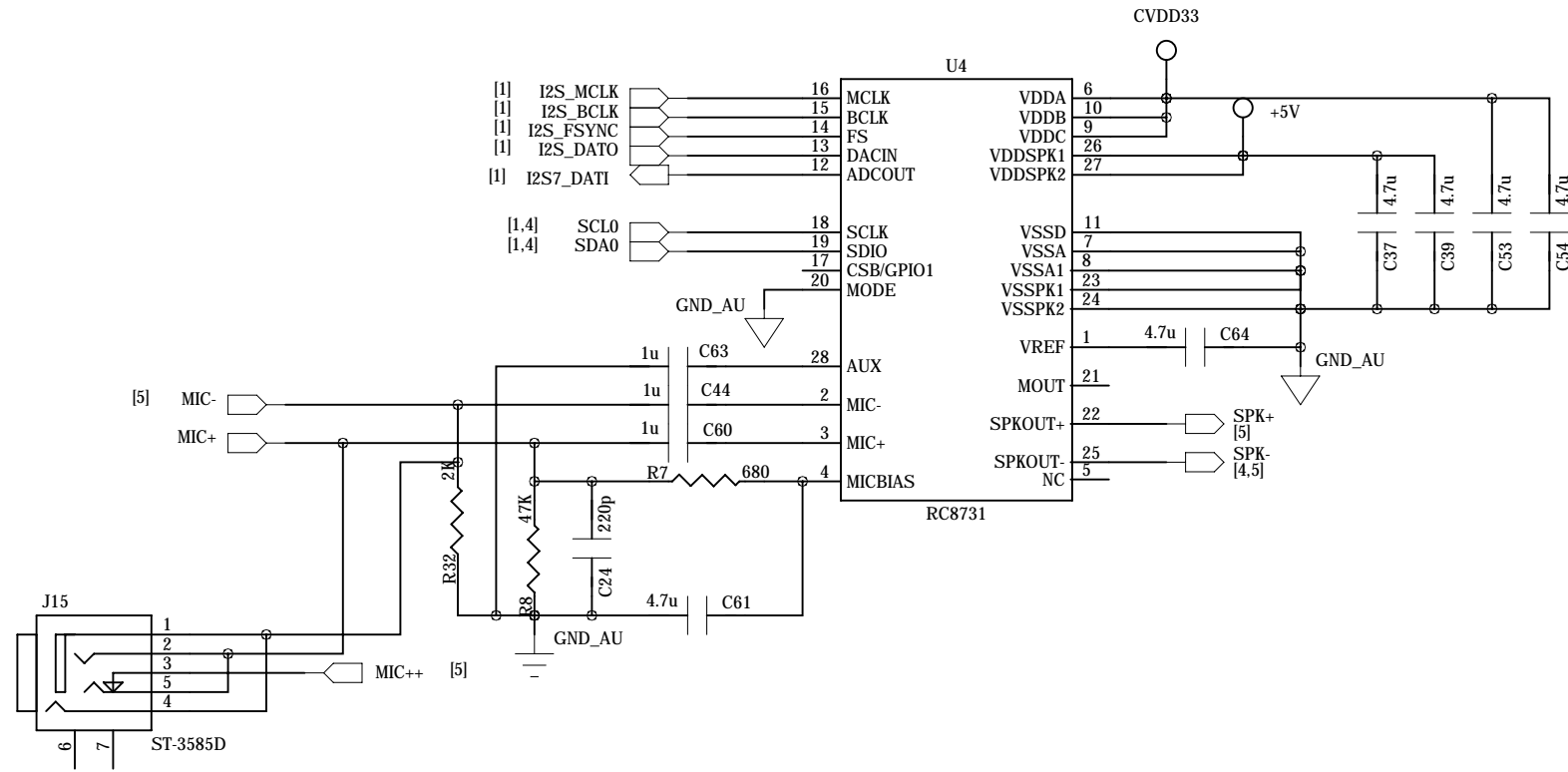
C

B

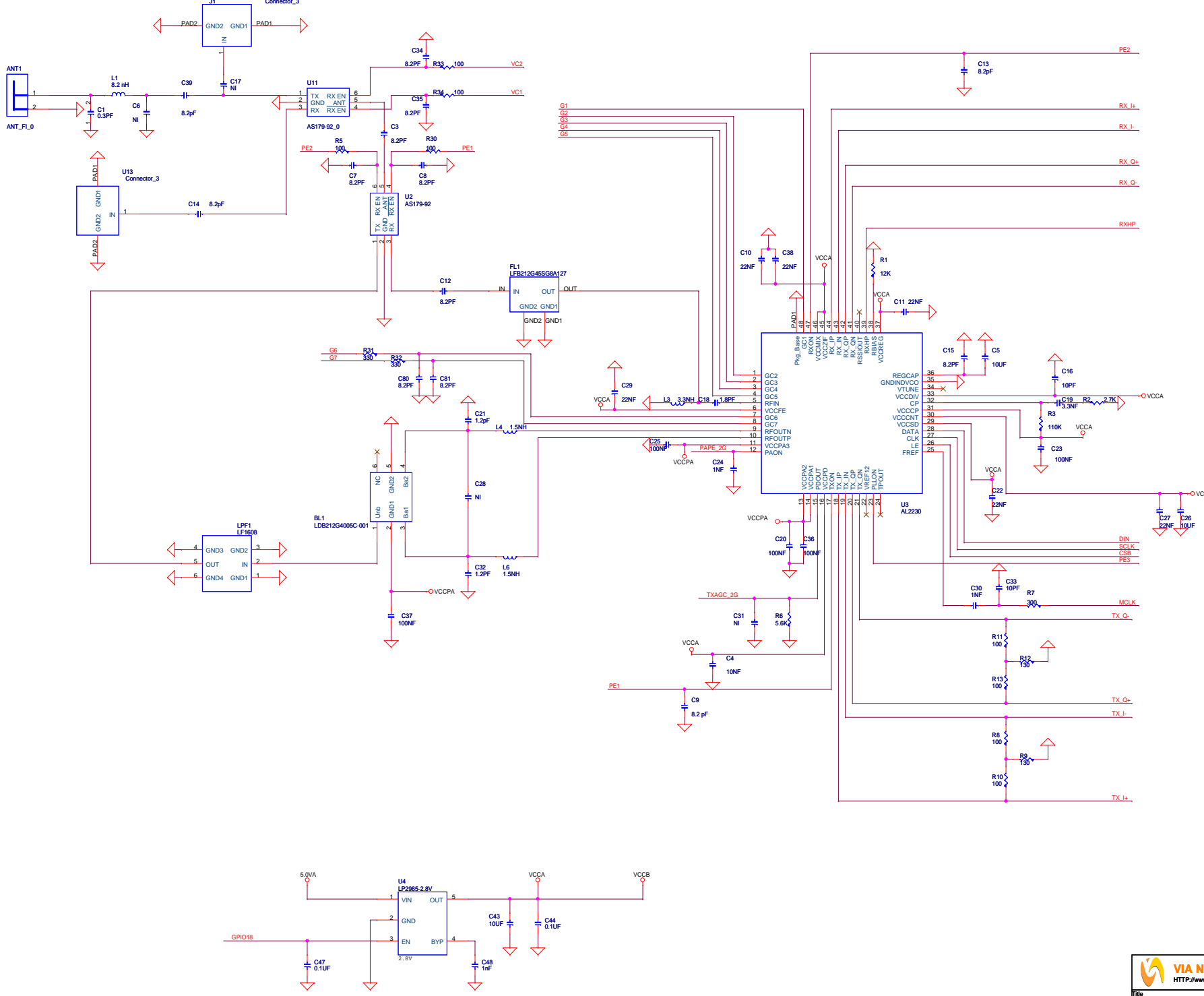
B

A

A



NETWAVE TECH. LTD.		REV:
Audio		
		SHEET: 5 OF 5

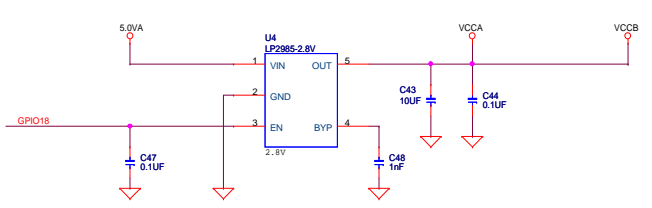


BB and RF Interface

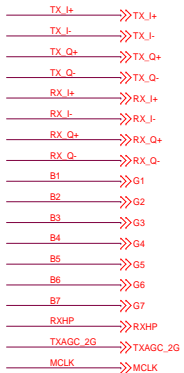
- TX_I+ >>> TX_I+
- TX_I- >>> TX_I-
- TX_Q+ >>> TX_Q+
- TX_Q- >>> TX_Q-
- RX_I+ >>> RX_I+
- RX_I- >>> RX_I-
- RX_Q+ >>> RX_Q+
- RX_Q- >>> RX_Q-
- RXHP >>> RXHP
- G1 >>> G1
- G2 >>> G2
- G3 >>> G3
- G4 >>> G4
- G5 >>> G5
- G6 >>> G6
- G7 >>> G7
- TXAGC_2G >>> TXAGC_2G
- MCLK >>> MCLK

MAC and RF Interface

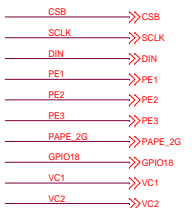
- CSB >>> CSB
- SCLK >>> SCLK
- DIN >>> DIN
- PE1 >>> PE1
- PE2 >>> PE2
- PE3 >>> PE3
- PAPE_2G >>> PAPE_2G
- GPIO18 >>> GPIO18
- VC1 >>> VC1
- VC2 >>> VC2



BB and RF Interface

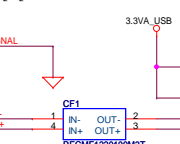


MAC and RF Interface

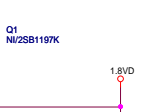
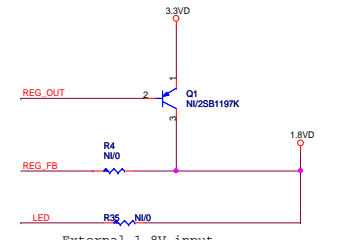
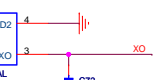


CN1 is on TOP side and CN2 is on bottom side.
There is only one which will be populated.

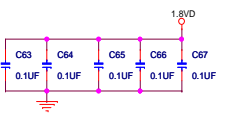
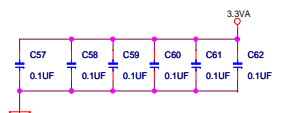
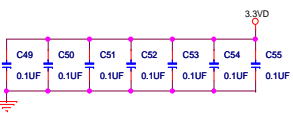
There are three options for radio off.



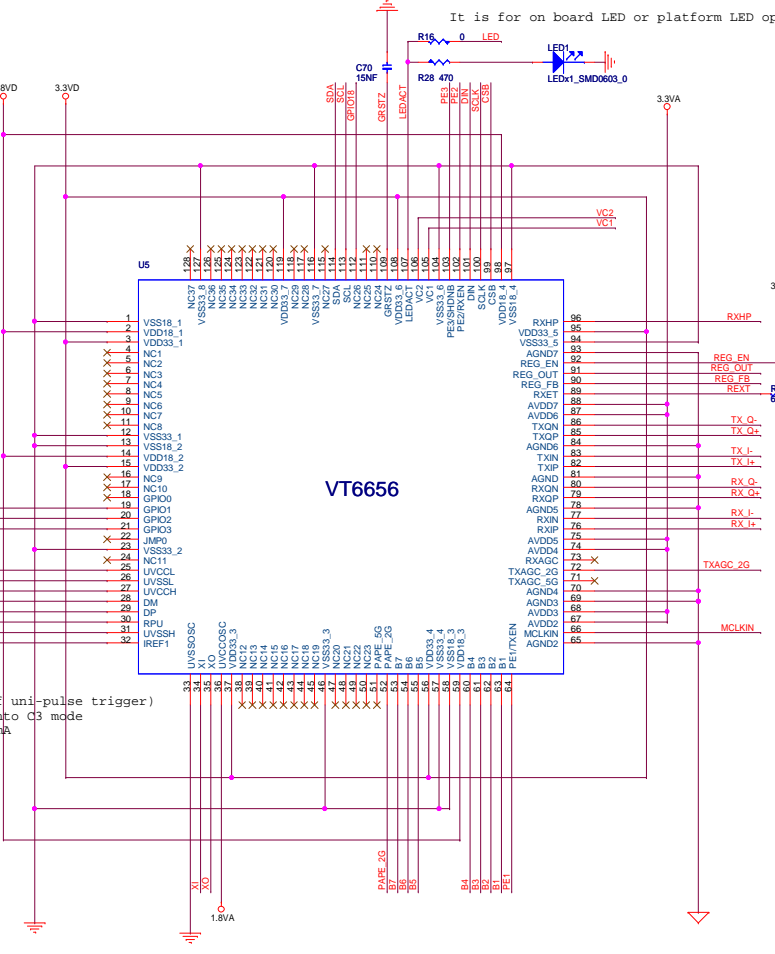
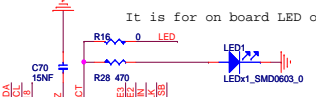
GPIO1 Attachment /De-attachment mode (On/Off unipulse trigger)
GPIO2 Selective suspend mode .. CPU entry into C3 mode
GPIO3 Radio Off mode (Low signal active) 80mA



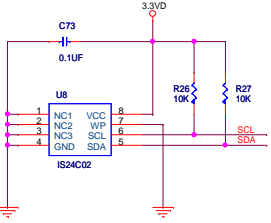
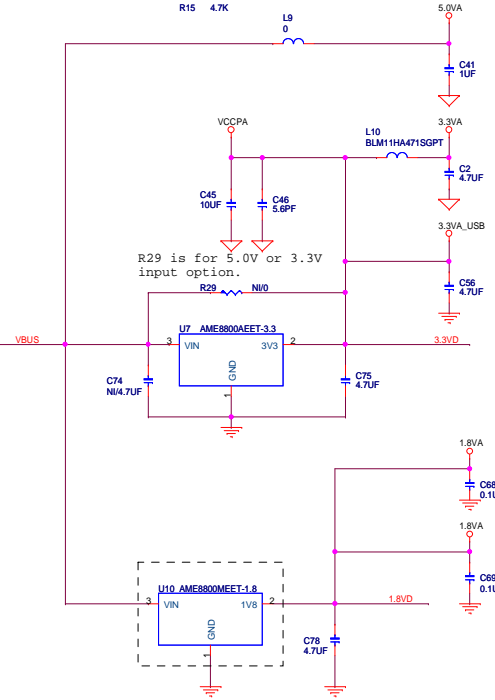
External 1.8V input



It is for on board LED or platform LED option.



Vt6656



VIA Networking Technologies, Inc.
[HTTP://www.VNTek.com.tw](http://www.VNTek.com.tw) TEL: 886-2-22182078

Title			VT3184 Demo Board (USB)—5V INPUT		
Size	Document Number	Rev			
C	VN01.36B	1.0			
Date:	Wednesday, October 19, 2005	Sheet	3	of	4