

User Manual

Model: FI8910/FI8910W

IP Wired / Wireless Camera

**NIGHT VISION & REMOTE PAN / TILT ROTATE/
TWO WAY AUDIO**



Color: Black



Color: Silver

CONTENTS

1 WELCOME	1
1.1 Features	1
1.2 Packing List	2
1.3 Product views	2
1.4 Preparations before use	3
2 SOFTWARE OPERATION	5
2.1 IP Camera Tool	5
2.2 Camera Login	9
2.3 Device Status	13
2.4 For Visitor	14
2.5 For Operator	16
2.6 For Administrator	18
3 How to configure settings in For Administrator	19
3.1 Alias Settings	19
3.2 Date & Time Settings	20
3.3 User Settings	20
3.4 Multi-Device Settings	21
3.5 Basic Network Settings	25
3.6 Wireless LAN Settings	27
3.7 ADSL Settings	27
3.8 UPnP Settings	28
3.9 DDNS Service Settings	28
3.10 Mail Service Settings	28
3.11 MSN Setting	29
3.12 FTP Service Settings	31
3.13 Alarm Service Settings	33
3.14 PTZ Settings	37
3.15 Upgrade Device Firmware	38
3.16 Backup & Restore Settings	38
3.17 Restore Factory Settings	38
3.18 Reboot Device	39

3.19 Log.....	39
3.20 Back.....	39
4 APPENDIX	40
4.1 Frequently Asked Questions.....	40
4.2 Default Parameters.....	43
4.3 Specifications.....	43
5 OBTAINING TECHNICAL SUPPORT	44
6, 7 warnings	45

1 WELCOME

IPCAM is an integrated wireless IP Camera solution. It combines a high quality digital video Camera with network connectivity and a powerful web server on your desktop from anywhere on your local network or over the internet.

The basic function of IPCAM is transmitting remote video on the IP network. The high quality video image can be transmitted with 30fps speed on the LAN/WAN by using MJPEG hardware compression technology.

The IPCAM is based on the TCP/IP standard. There is a WEB server inside which could support Internet Explore. Therefore the management and maintenance of your device is simplified by using the network to achieve the remote configuration, start-up and to upgrade the firmware.

You can use this IPCAM to monitor special places such as your home and your office. Also controlling the IPCAM and managing image are simple by clicking the website through the network.

1.1 Features

- Powerful high-speed video protocol processor
- High Definition Color CMOS Sensor
- 300K Pixels
- IR night vision (Range: 8m)
- Pan 300 degree, tilt 120 degree
- Optimized MJPEG video compression for transmission
- Multi-level users' management and passwords definition
- Embedded Web Server for users to visit by IE
- Wi-Fi compliant with wireless standards IEEE 802.11b/g
- Supports IR_CUT
- Supports Dynamic IP (DDNS) and UPnP LAN and Internet (ADSL, Cable Modem)
- Motion detection activates alarm
- Supports image snapshot

- Supports multiple network protocols: HTTP/TCP/IP/UDP/STMP/DDNS/SNTP/DHCP/FTP
- Supports WEP/WPA/WPA2 encryption
- Supports Daylight Saving Time
- Supports MSN
- Supports Gmail as sender on mail service settings
- Supports audio on Firefox, Google Chrome and Safari

1.2 Packing List

Untie the package and verify the items with the following list:

- IPCAM×1
- Wi-Fi Antennax1 (only available for wireless model)
- DC Power Supply×1
- Quick Installation Guidex2 (For MAC OS×1,For Windows OS×1,Foscam Video Installation)
- CD×1 (Includes IPCAM user manual、IP camera tool)
- Network Cables×1
- Mounting bracket×1(option)
- Warranty Card×1

NOTE: Please Contact us immediately in case of any damaged or missing parts.

1.3 Product views

1.3.1 Front View



Figure 1.1

Infrared LED: 11 IR LEDs

LENS: CMOS sensor with fixed focus lens

WIFI Antenna: Wireless Antenna

Microphone: Built-in microphone

Speaker: Built-in speaker

1.3.2 Back View

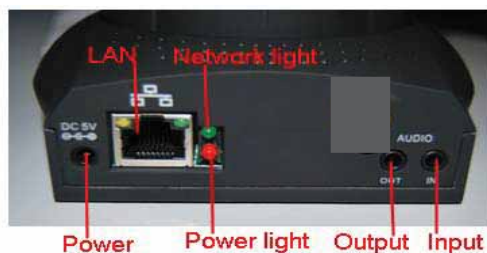


Figure 1.2

LAN: RJ-45/10-100 Base T

Power: DC 5V/2A Power supply

Network Light: The LED will blink when power and network cable are plugged in

Power Light: If the power adapter works well, the light will turn on

Audio Input: This jack is used to plug an external microphone

Audio Output: This jack is used to plug an external speaker

1.3.3 Bottom View

There are three stickers at the bottom of the camera; it is an important feature of original Foscam cameras. If your camera does not have any of these three stickers, it may be a clone one. Cloned Foscam cameras cannot use original firmware and not eligible obtain warranty or technical services.



Figure 1.3

Reset button: Press and hold down the RESET BUTTON for 15 seconds. Releasing the reset button, username and password will back to the factory default administrator username and password. You must power on the camera before reset.

1.4 Preparations before use

1.4.1 Software installation

1) Put the CD in the CD drive of your computer. Open the CD; find the software per instructions;

2) Double click **IPCamSetup.exe** and install the software per instruction.



Figure 1.4

3) Click **Next** to complete the software installation.

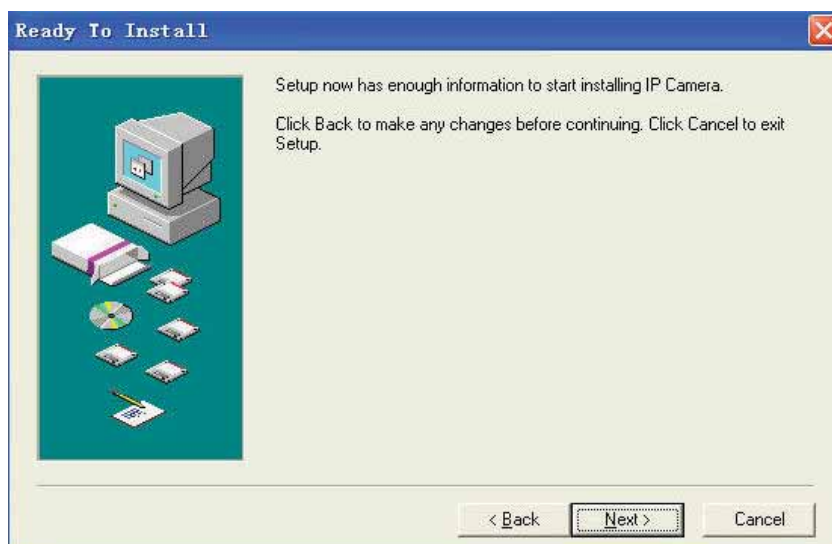


Figure 1.5

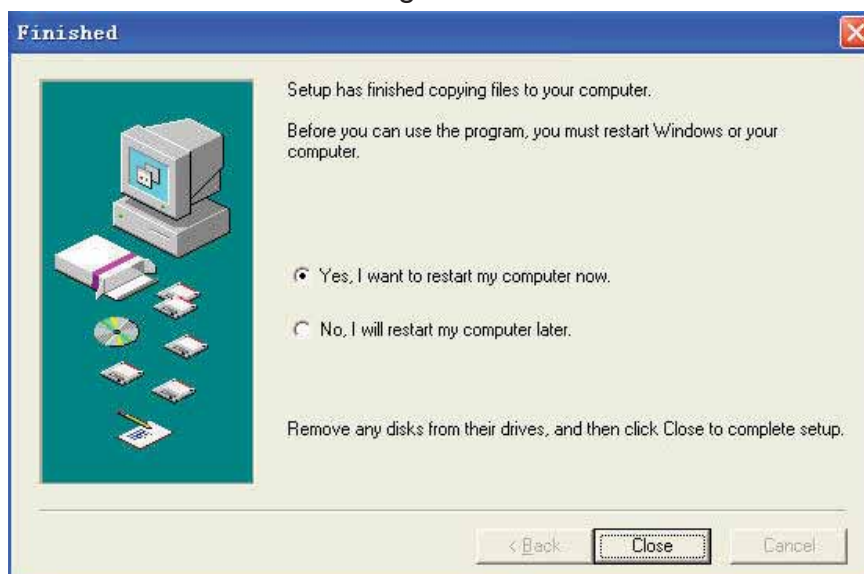


Figure 1.6



The computer restarts upon installation completion and an icon  appears on the desktop automatically.

NOTE: If you use Windows7 and could not find the icon on desktop after installing the IP camera tool, please check if the path of the camera software is correct.

For example, if it was pointing to C:\Windows\System32\IPCamera.exe.

Then fix this by pointing the shortcut to the correct path C:\Windows\SysWOW64\IPCamera.exe.

The shortcut should work without any problems.

CAUTION: Before installing and using the product, please read the following precautions carefully and make sure they are fully understood.

Use only the power adapter attached with the product. Using unauthorized power adapters may cause damage to your IP Camera. IP Camera terminal shall be installed in an indoor environment where the rain or snow could not pour it.

1.4.2 Hardware preparation

Follow the steps below to set up your camera hardware connections. Make sure to follow each step carefully to ensure that the camera operates properly.

- 1) Adjust the antenna at the back of the camera.
- 2) Plug the network cable into the camera and then into your Cable/DSL router.
- 3) Plug the power adapter into the camera and then into the power outlet.

CAUTION: Make sure to only use the power adapter supplied with IPCAM. Using a non-approved power adapter may damage the camera.

- 4) The camera takes approximately 30 seconds to start up before it displays an IP address on the **IP Camera Tool** (details: [2.1](#))
- 5) When the camera is powered and network cable plugged correctly, the small green light (network jack) will turn on and the small yellow light will flash. The network light will blink. (about 1~2 times per second) and the power light will also turn on.

2 SOFTWARE OPERATION

2.1 IP Camera Tool

When the Device has been mounted properly, you can double click the icon "IP Camera Tool"



and a dialog box as Figure 2.1 will pop up.

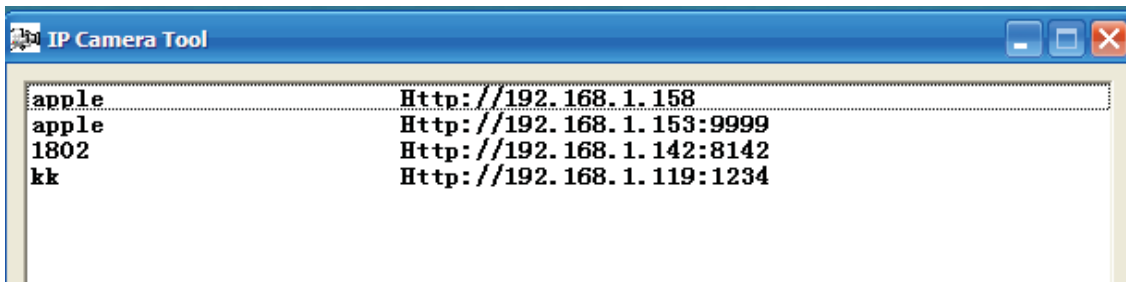


Figure 2.1

The software searches for the IPcam automatically over the LAN.

There are 3 cases:

- 1) If no Camera found in LAN. After about 1 minute of searching, the Result Field will show “not found IP Server” and the program shuts off automatically.
- 2) If IP Cameras have been found within LAN. All the IP Cameras will be listed and the total number is displayed in the result field as shown in Figure 2.1.
- 3) The IP Cameras installed within LAN do not share the same subnet with the monitoring PC. A prompt is displayed with a “Subnet doesn’t match, dbclick to change!” message. Click the left mouse button to choose the prompt and click the right mouse, choose **Network Configuration** to set the IP address of the Camera to the same subnet as the LAN. (Figure 2.5) You can choose obtain IP from DHCP server or set a static IP for the camera. (Figure 2.4)

NOTE: If you could not find the camera’s IP on the IP camera tool.
 Please check if DHCP is enabled on your router, or disable MAC address filter.
 Make sure that the firewall doesn’t block the camera.

Six Options

Choose the IP Camera list and right click; there are six options, Basic Properties, Network Configuration, Upgrade Firmware, Refresh Camera List, Flush Arp Buffer and About IP Camera Tool as shown Figure 2.2.

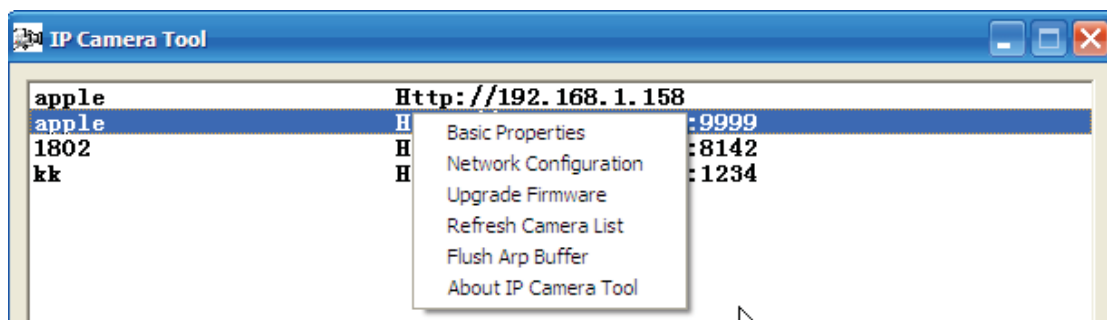


Figure 2.2

● Basic Properties

There are some devices information in the Basic Properties, such as **Device ID**, **System Firmware Version**, and **Web UI Version**. (Figure 2.3)

If there are several cameras on the list, you can choose basic properties to check the device ID and recognize the IP address belong to which camera you set up, For example Device ID is 000DC5D203BB, the same MAC ID sticker is found at the bottom/back of the camera.

Each camera has its own MAC ID. Sometimes, if camera’s IP is not found on the IP Camera Tool.

The firewall may be blocking it, therefore you can add this MAC ID to your router and give it a fixed IP or add the MAC ID as a trusted site. There are two MAC addresses, one is Wired MAC and the other is WIFI MAC.

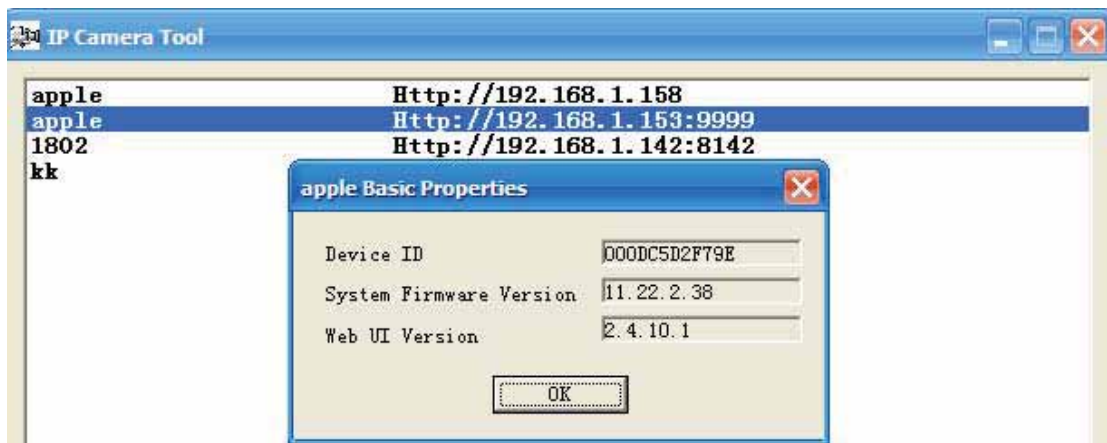


Figure 2.3

● **Network Configuration**

This page will allow you to configure the Network parameters.

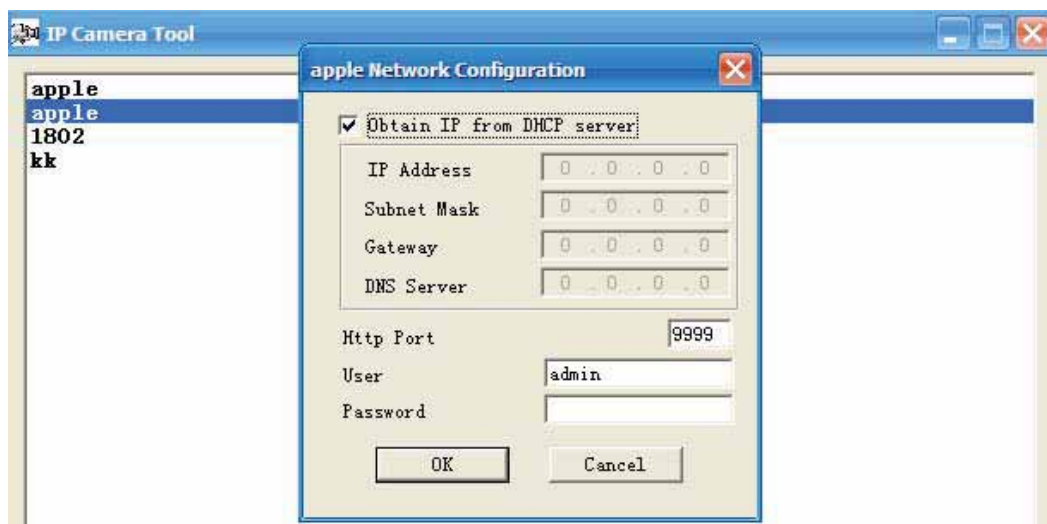


Figure 2.4

Obtain IP from DHCP server: If checked, the device will obtain IP from DHCP server. In other words, the camera will have a dynamic IP. (Make sure the Router which the camera connects has DHCP function and DHCP is enabled).

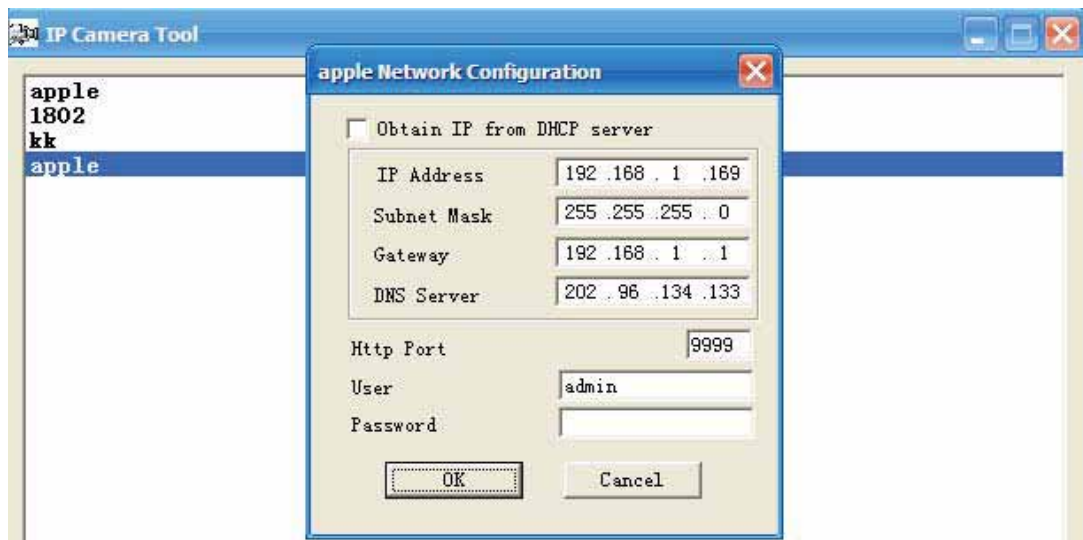


Figure 2.5

IP Address: Fill in the IP address assigned and make sure it is in the same subnet as your computer or router. (I.e. the first three sections are the same)

Subnet Mask: The default subnet mask of the equipment in our LAN is: 255.255.255.0. You can find the subnet mask in the basic information of your router or the locally-attached of your PC.

Gateway: Make sure it is in the same subnet with PC's IP address. The gateway is your router's LAN IP.

DNS Server: IP address of your ISP network provider. You can find the DNS server in your router or check the locally-attached address of your computer. Your PC contains your PC's IP address, gateway and DNS server. Normally, there are two DNS servers. Here you can also set the DNS server the same with gateway.

Http Port: The default Lan port is 80. You can set another port number, such as port 8005, 85, 8100.etc.

User: Default administrator user name is admin.

Password: Default password is blank, no password.

NOTE: If the prompt "Subnet doesn't match, dbclick to change!" appears, please enable DHCP and choose obtain IP from DHCP server or set camera's IP address and gateway once again.

● Upgrade Firmware

Enter the correct User and Password to upgrade system Firmware and Web UI. If you upgrade the camera, you must **upgrade system firmware** first and then **upgrade web UI**. Or it may damage the camera.

Please download the firmware package under the correct type of your camera before upgrade. Follow the upgrade documentation in the package carefully to upgrade. Read the readme.txt file first before you upgrade.

CAUTION: Please don't upgrade the firmware freely. Sometimes, your camera may be damaged if configured wrong during the upgrade. If your camera works well with the current firmware, we recommend not upgrading.

NOTE: If you download the firmware. Please check if bytes of the two .bin file are exactly the same with the size in readme. If it fits, you can upgrade it. If not, please download the firmware again until the bytes are exactly the same with the official size. Otherwise, your camera will crash by the firmware which you selected.

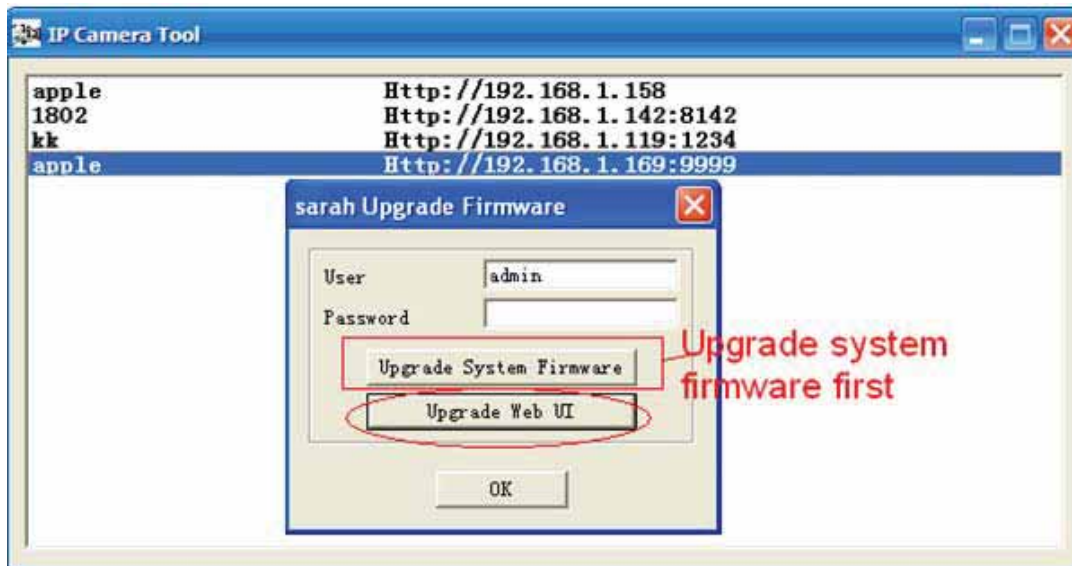


Figure 2.6

- **Refresh Camera List**

Refresh camera list manually.

- **Flush Arp Buffer**

When wired and wireless of the camera both are fixed IP address. You may encounter an issue with not being able to open the camera webpage. You may try to use flush Arp buffer.

- **About IP Camera Tool**

Display the version of the IP Camera Tool.

2.2 Camera Login

You can access the camera through the **IP Camera Tool** or **IE, Firefox, Google Chrome, Safari or other stand browser** directly.

(1) Double click the IP address of the IP Camera listed (Figure 2.1).The browser you use will be opened automatically and display the camera login page. (Figure 2.8)

(2) You can also access the camera by IE browser directly by typing in the camera's IP address. For example:



Figure 2.7



Figure 2.8

The default user is admin, no password.

There are two modes to login. If you use IE browser, please choose activeX mode to login. If you use Firefox or Google Chrome, please choose Server Push Mode to login. (Figure 2.9)



Figure 2.9

For IE browser

Fill in the user name and choose the first login button.

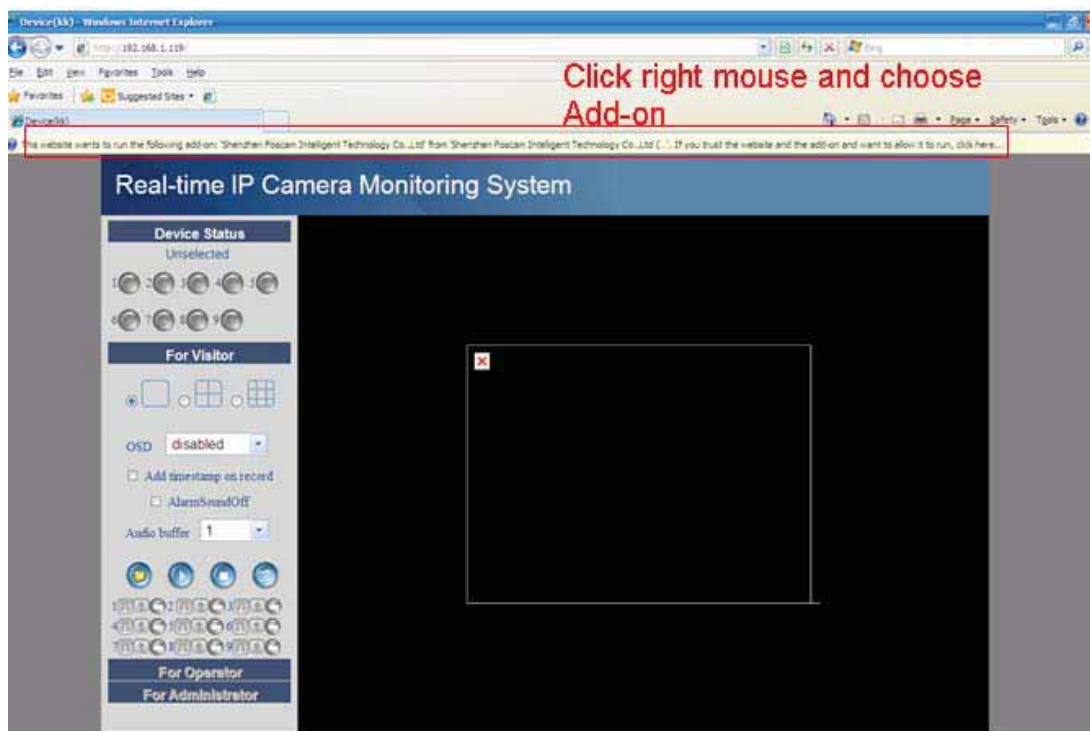


Figure 2.10

The first time you login the UI. You will receive an activeX prompt as in the picture above. (Figure 2.10) Right click on the active prompt and choose **Run Add-on**(Figure 2.11).

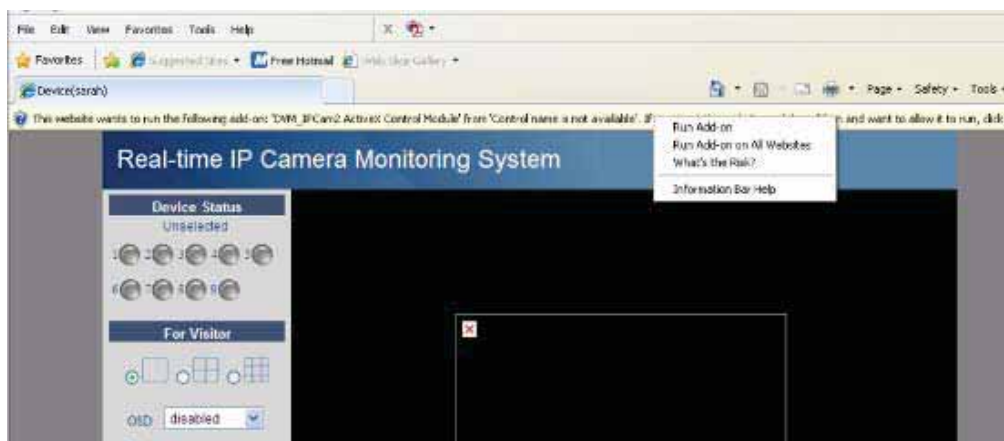


Figure 2.11

Select **Run** on the next prompt (Figure 2.12) which will return to the login screen.

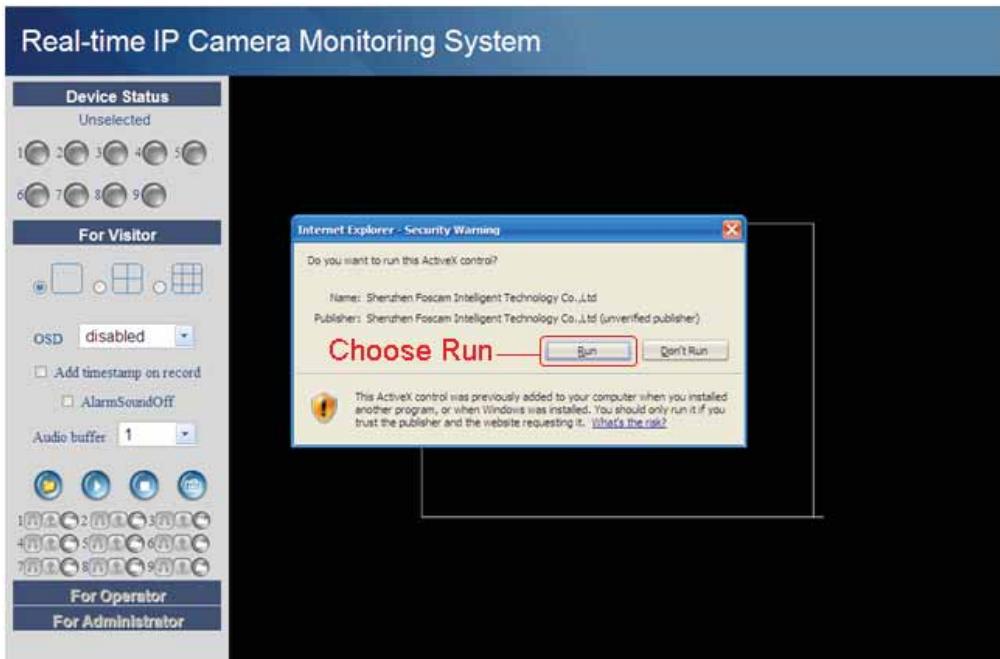



Figure 2.12

Fill in the user name and select login again. You will see a live video. (Figure 2.13)



Figure 2.13

NOTE: If you could not view living video after running the activeX. Only a red cross  in the center of the video or just a black screen. Please change another port number to try. Don't use port 80. Use port 85, 8005 or 8100 to try.

Make sure all firewall or antivirus software on your computer does not block the active download and installation. If you are unable to run the activeX control, try shutting down the firewall or antivirus program.

For Firefox, Google Chrome, Safari or other standard browser

Fill in the user name and choose the second login button.

It may ask you for user name and password again before you login the UI.
 After you enter the user name, you will see **Device Status** of the camera.

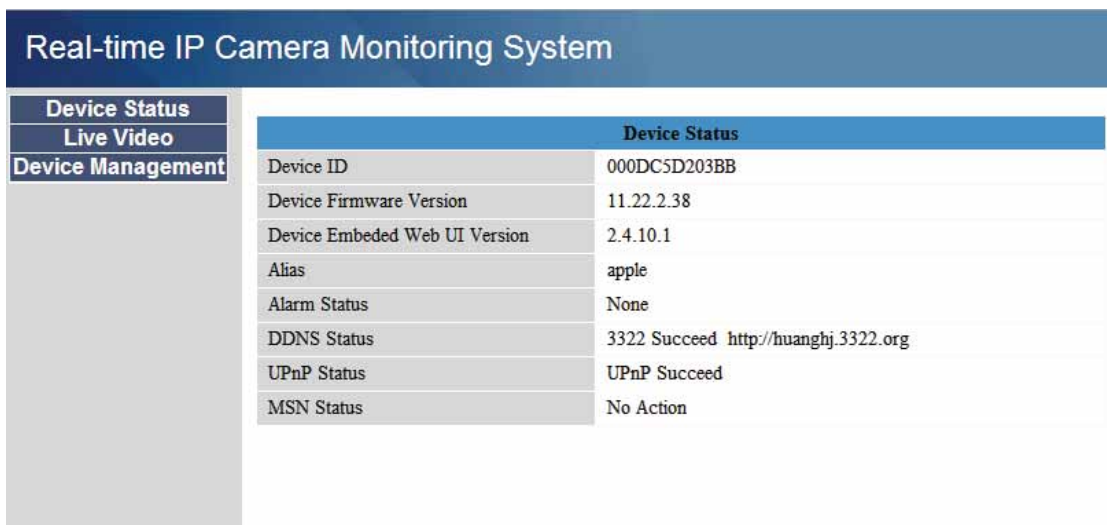


Figure 2.14

Click **Live Video**, you will see the camera's live video.



Figure 2.15

2.3 Device Status

For IE browser

If the camera is connected properly the light of the device status will show green.
 If the light show yellow check if the activeX is enabled or change another port number and try again.



Figure 2.16

If you want to view the device information, choose **For Administrator** and then click **Device info** (Figure 2.17)

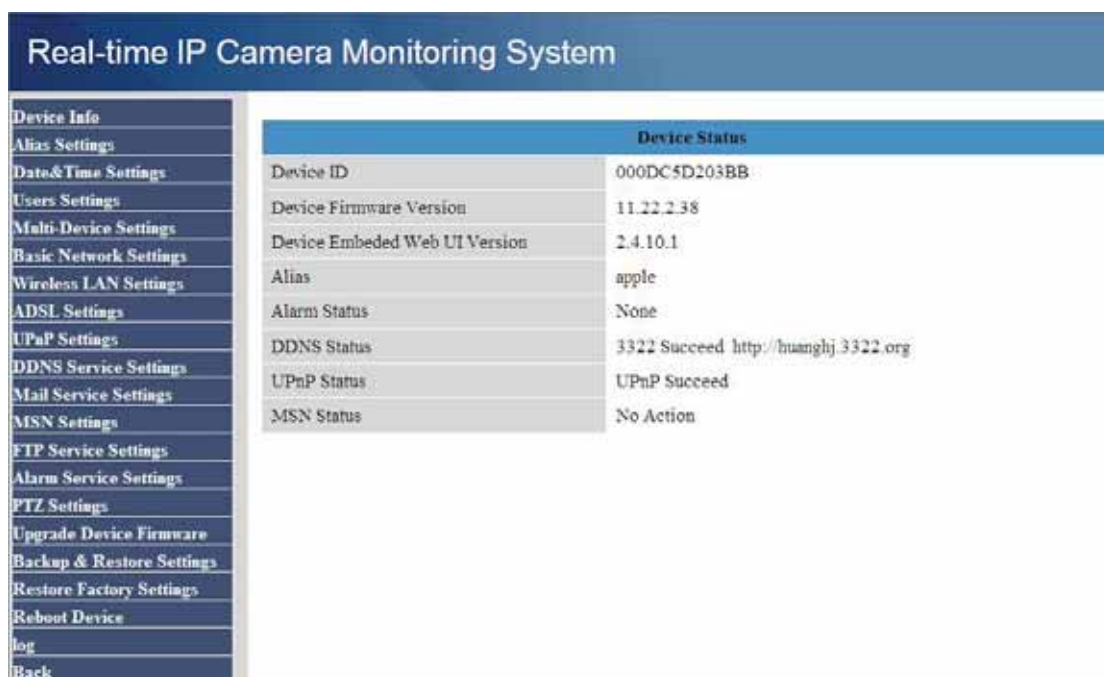


Figure 2.17

For Firefox, Google Chrome and Safari

When you login the UI, you will see **Device Status** which is the same as **Device Info** in IE browser. (Figure 2.14)

2.4 For Visitor

For IE browser

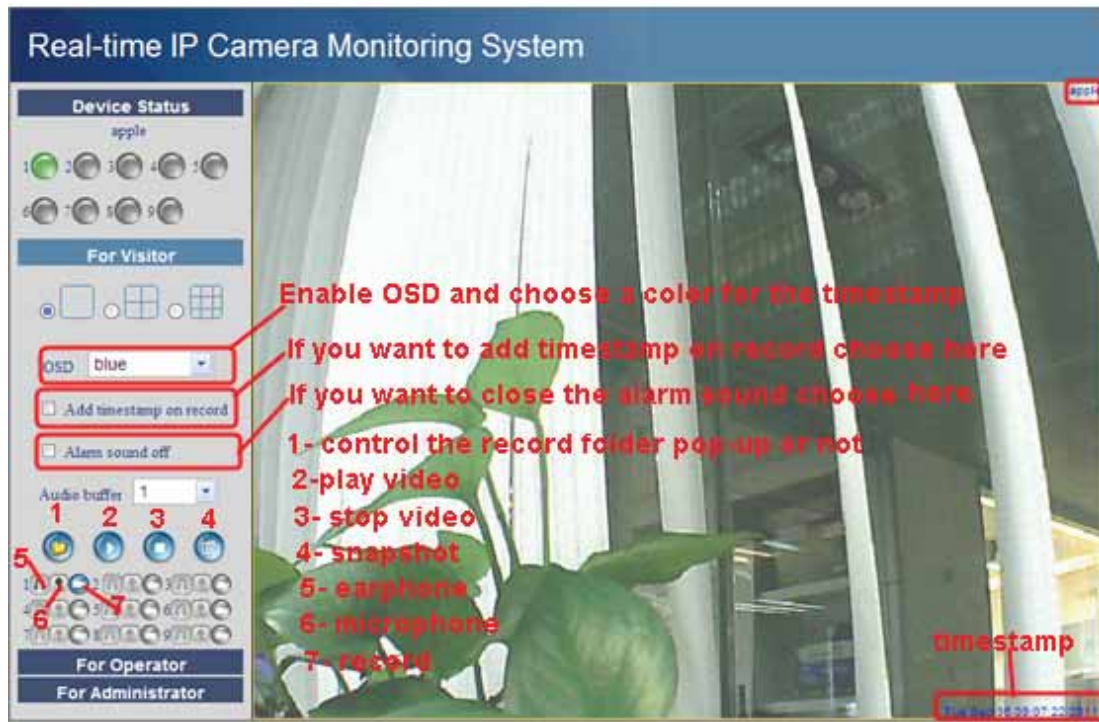


Figure 2.18


Multi-device window: The firmware inside the camera supports up to maximum of 9 cameras monitoring at the same time. You can add cameras in multi-device settings.


OSD: OSD is used to add timestamp on the video. There are five character colors to choose from.


Add timestamp on record: Select this option if you want to add a timestamp on record

Alarm sound off: Select this option, you cannot hear alarm sound when motion has been detected.

Audio buffer: Audio buffer with units set as number of seconds

: When you enable motion alarm, the camera will record automatically and store the recording file to the folder you set. This icon is used to control the folder pop-up automatically or not.

: Click the headphone icon and you will hear sound captured by the camera’s built-in microphone. You may need to plug in earphones or enable the computer speakers to hear from the camera’s microphone.

: Click the speaker icon and then talk through your computer’s microphone which will transmit through the camera’s speaker. People will hear your talking through the camera’s built-in speaker.

Record: Click the record icon. The camera will begin recording and store the .avi file to the folder you set. (Figure 3.3) Click the record icon again to stop the recording.

For Firefox, Google Chrome and Safari

You will see the picture like Figure 2.14 when you login the camera as a visitor.

2.5 For Operator

For IE browser

Click For Operator, the following screen will appear (Figure 2.19)

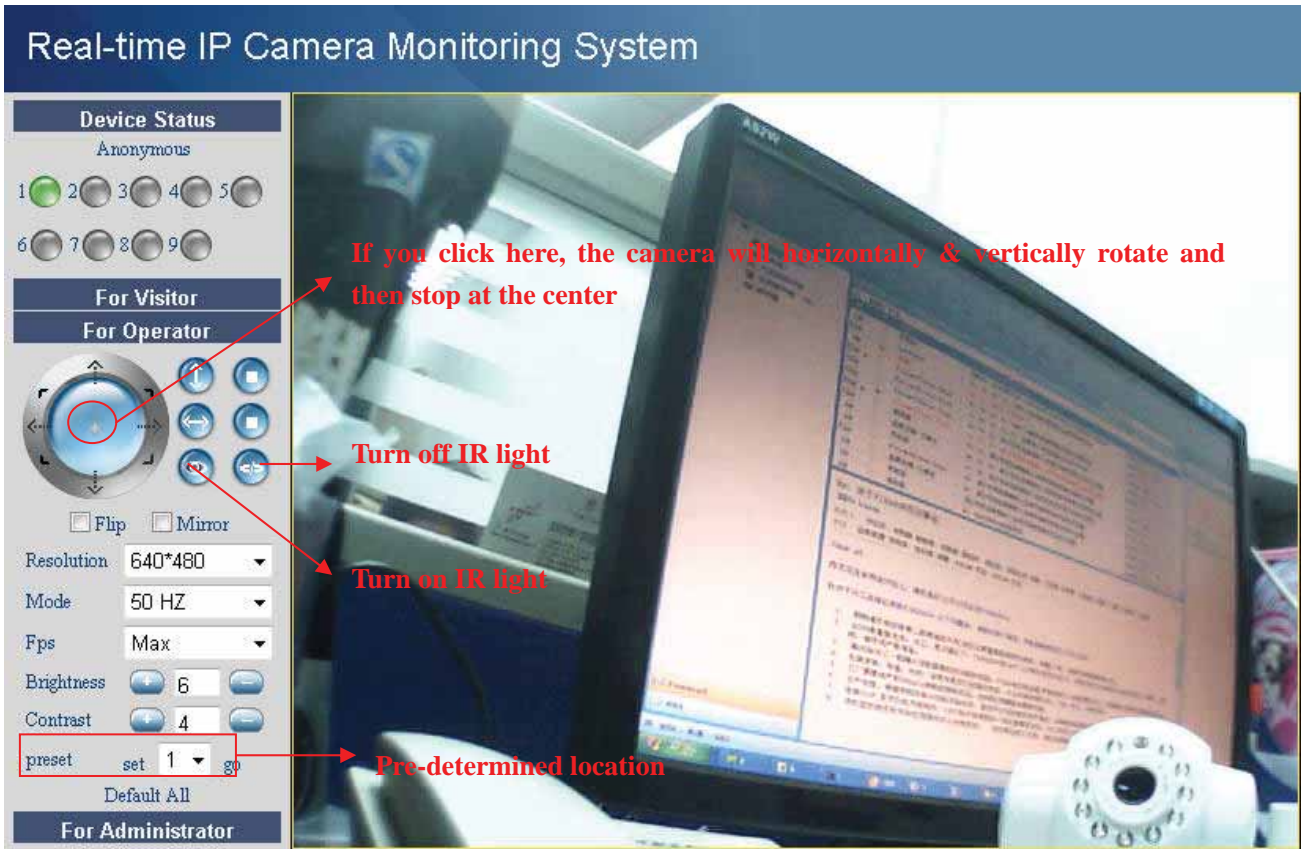


Figure 2.19

: Click this icon; camera will rotate up and down. Click to stop.

: Click this icon; camera will rotate left and right. Click to stop.

: Click this icon, all the IR lights will turn on. Click to turn off them.

Flip & Mirror: You can choose flip or mirror if you set up the camera to show a reverse image.

Mode: There are three modes. (50HZ, 60HZ and outdoor)

Brightness and **Contrast** are also used to adjust the quality of the video.

Preset: You can set a pre-defined location with this function. Once you have determined the viewing location, click the button “set”. This location can be retrieved by selecting the number assigned and clicking the “go” button.

For Firefox, Google Chrome and Safari

Click **Live Video**. There are several differences between IE and Firefox.

In Firefox, the snapshot button is under **For Operator**. Other functions under Live Video include: refresh video, refresh parameters, audio and close audio. (Figure 2.20a)



Figure 2.20a

audio: Connect speakers or earphone or other audio output device with PC. Click “audio” and you will hear sound from the IPCAM built-in microphone.

Closeaudio: Click Close audio to turn off audio.

NOTE: You must have installed VLC before using this function. If you have not,download and install the plugin from <http://www.videolan.org> (Figure 2.20b) and install it.



Figure 2.20b

During the installation, you must select Mozilla plugin as in Figure 2.20c.

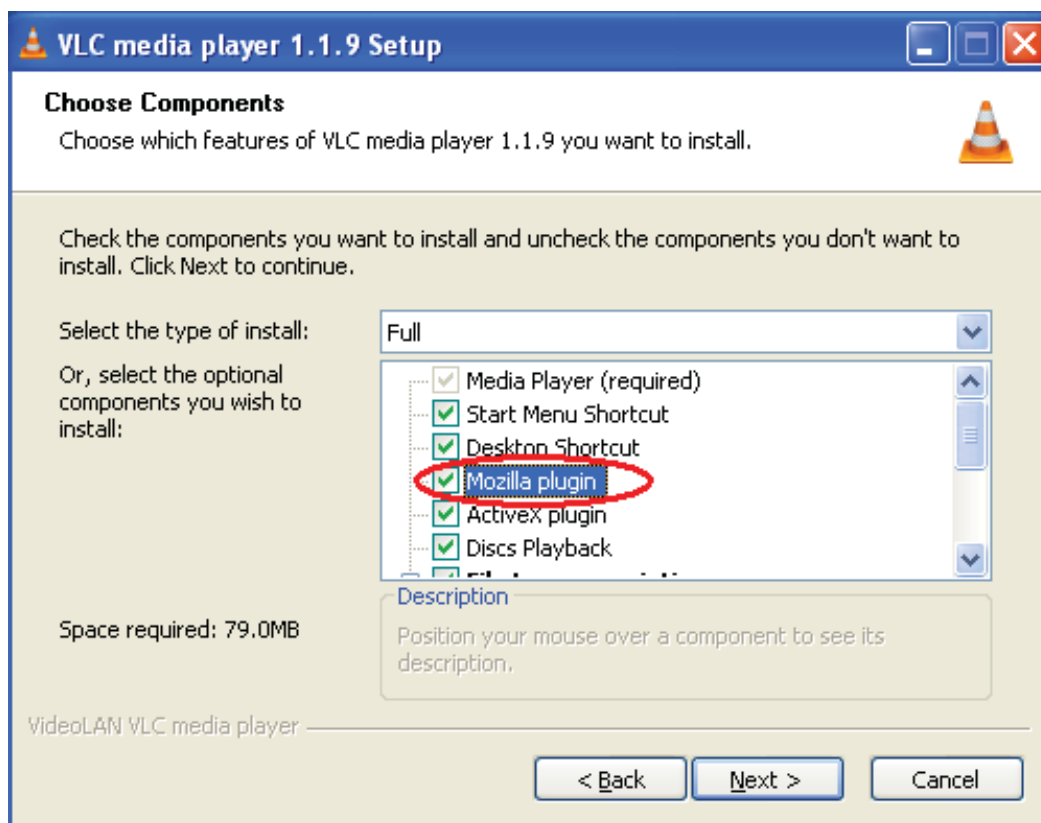


Figure 2.20c

2.6 For Administrator

For IE browser

Click **For Administrator**. You will see the **Device Status**.

It contains device ID, firmware version of the camera and other status of the camera.

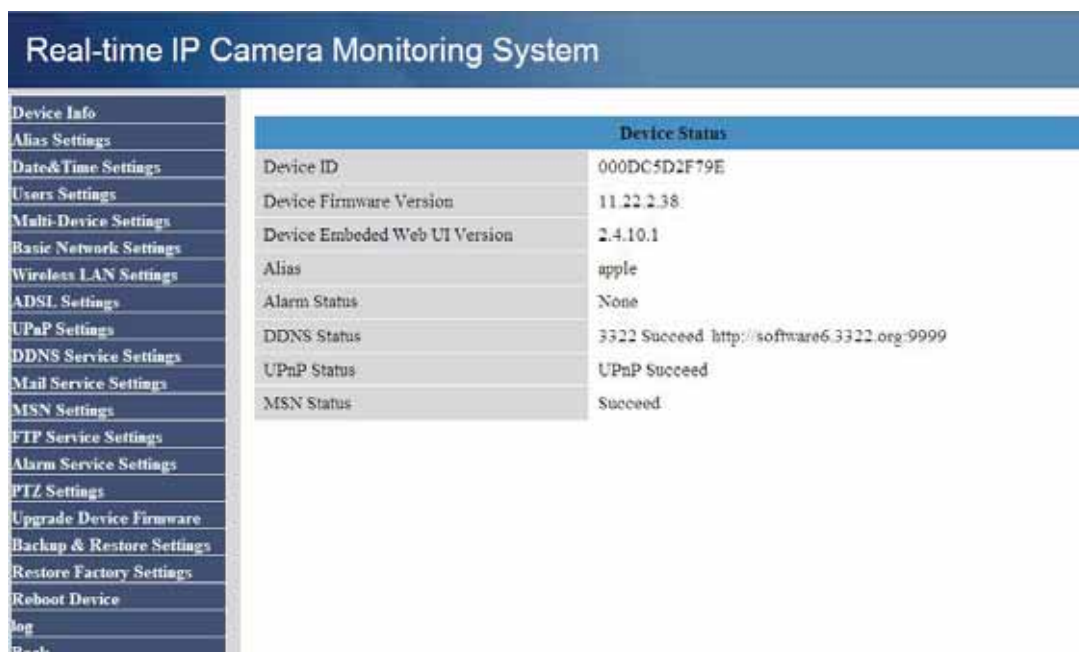


Figure 2.21

For Firefox, Google Chrome and Safari

Click **Device Management** and you will enter the settings page for administrator.

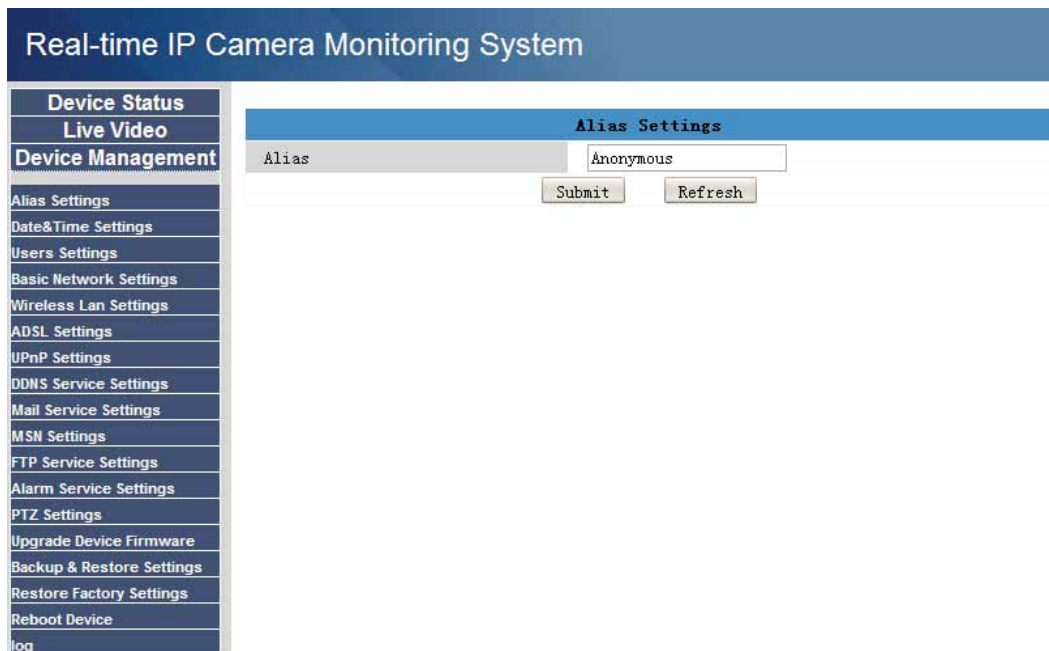


Figure 2.22

We can see the difference from Figure 2.21 and Figure 2.22.

IE has the three following options which are not the same in Firefox, Google Chrome and Safari:

Device Info: This is similar to **Device Status** which will have the same information as IE.

Multi-Device Settings: Since this function is controlled by activeX, it is not available in Firefox or Google Chrome.

Back: In Firefox or Google browser, you must click Live Video or Device Status to go back.

NOTE: Record and multi-device function are controlled by activeX controller, therefore Firefox or Google Chrome will not allow these functions.

3 How to configure settings in For Administrator

3.1 Alias Settings

Default alias is anonymous. You can set a name for your camera here such as lpcam. Click **Submit** to save your change. (Figure 3.1)

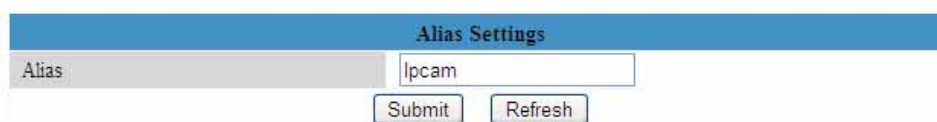


Figure 3.1

3.2 Date & Time Settings

Choose the clock timezone of your country. You can choose **Sync with NTP Server** (Figure 3.2a) or **Sync with PC Time**. (Figure 3.2b) If your country is implementing the Daylight Saving Time, here you can set it for your camera(Figure 3.2c).

Date&Time Settings	
Device Clock Time	Wednesday, May 11, 2011 6:40:31 PM
Device Clock Timezone	(GMT +08:00) Beijing, Singapore, Taipei
Sync with NTP Server	<input checked="" type="checkbox"/>
Ntp Server	time.nist.gov
Sync with PC Time	<input type="checkbox"/>
Daylight Saving Time	<input type="checkbox"/>
<input type="button" value="Submit"/> <input type="button" value="Refresh"/>	

Figure 3.2a

Date&Time Settings	
Device Clock Time	Wednesday, May 11, 2011 6:45:08 PM
Device Clock Timezone	(GMT +08:00) Beijing, Singapore, Taipei
Sync with NTP Server	<input type="checkbox"/>
Sync with PC Time	<input checked="" type="checkbox"/>
Daylight Saving Time	<input type="checkbox"/>
<input type="button" value="Submit"/> <input type="button" value="Refresh"/>	

Figure 3.2b

Date&Time Settings	
Device Clock Time	Wednesday, May 11, 2011 7:53:48 PM
Device Clock Timezone	(GMT +08:00) Beijing, Singapore, Taipei
Sync with NTP Server	<input type="checkbox"/>
Sync with PC Time	<input checked="" type="checkbox"/>
Daylight Saving Time	<input checked="" type="checkbox"/>
Advance Time	60'
<input type="button" value="Submit"/> <input type="button" value="Refresh"/>	

The time is Wednesday, May 11, 2011 6:53:48PM before setting Daylight Saving Time

Figure 3.2c

3.3 User Settings

You can set permission for visitor, operator and administrator. Click **Submit** to save these settings. The camera will reboot.

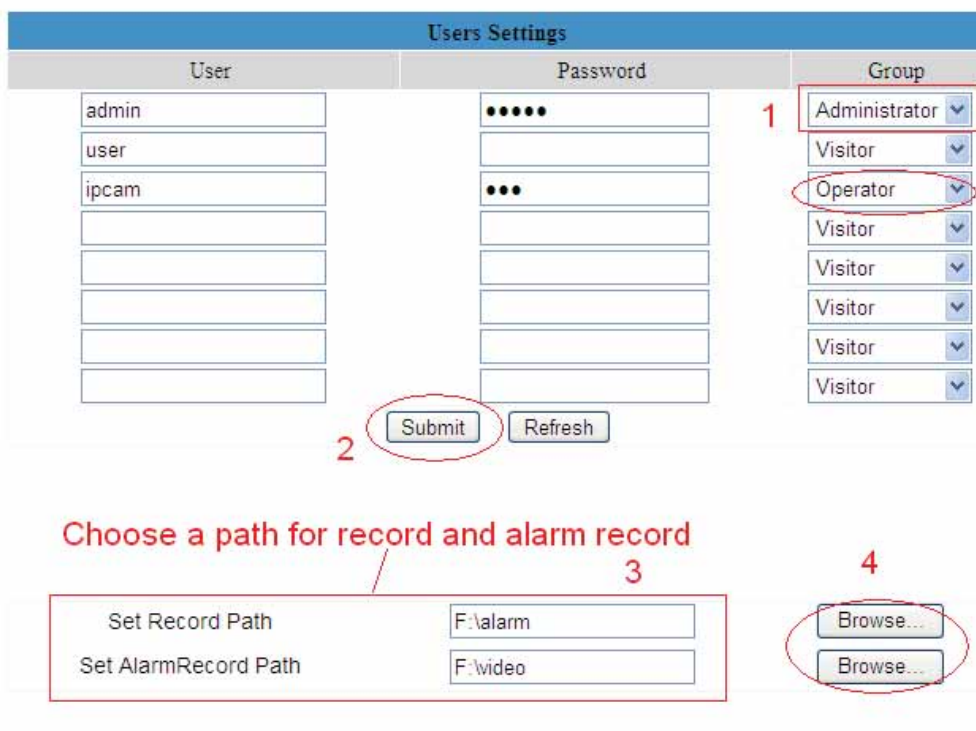


Figure 3.3

Here you can set the record file path and the alarm record file path for the camera. Click **Browse** and choose the path. Record Path will store the file of the recording when you record manually. (Click record icon to record. Figure 2.18)

Alarm record path will store the file of the recording when it is activated by motion. (you must set motion alarm first) (Figure 3.23)

The default path for Record Path and Alarm Record Path is C:\Documents and Settings\All Users\Documents.

NOTE: In Windows7 or Vista, if you cannot change the record path. Please set as below: Windows7 or Vista's security level is higher than Windows XP/2000. For "set record path" function, add the Device IP address to the IE's 'Trusted sites' first as follows:
IE browser → Tool → Internet Proper → Security → Trusted sites → Sites → Add

3.4 Multi-Device Settings

The firmware inside the camera can support a maximum of 9 devices monitoring at the same time.

3.4.1 Add cameras in LAN

In Multi-Device Settings page, you can see all devices searched in LAN. The 1st Device is the default one. You can add more cameras in the list in LAN for monitoring. The camera's software supports up to 9 IP Cameras online simultaneously. Click **The 2nd Device** and click the item in the **Device List in LAN**, the Alias, Host and Http Port will be filled in the boxes below automatically. Enter the correct username and password then click **Add**. Add more cameras in the same way. After all cameras have been added, choose **Submit**.

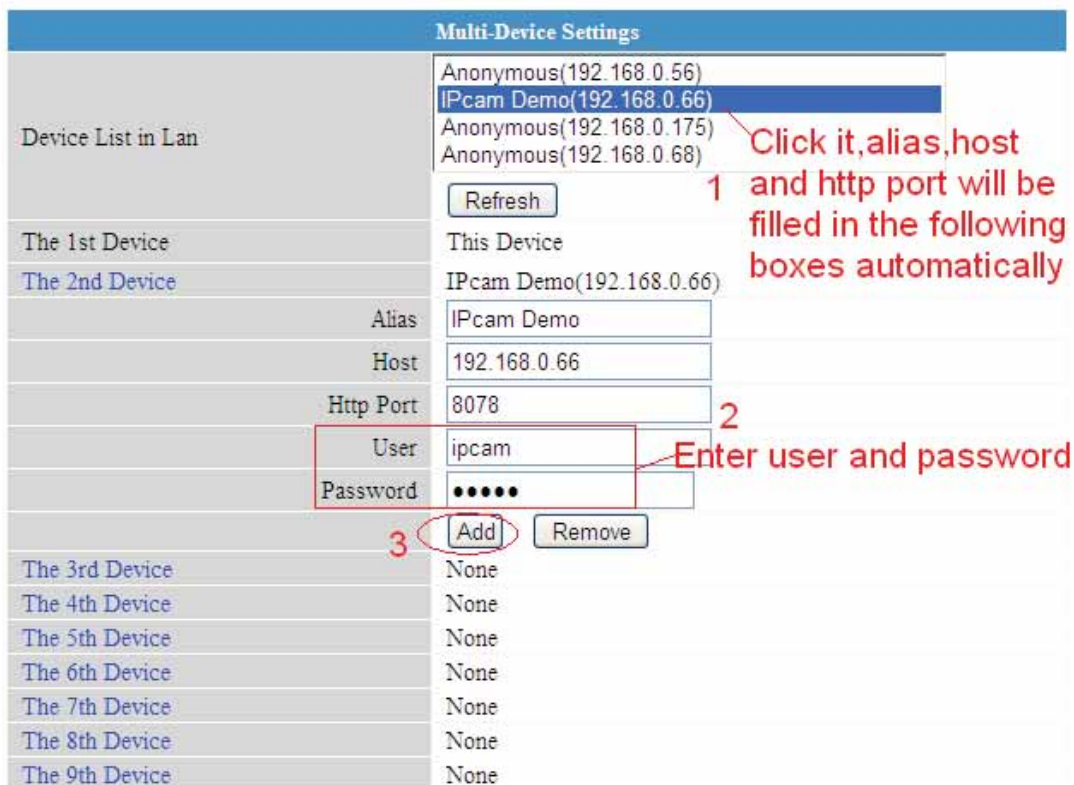


Figure 3.4



Click submit after you add all the cameras

Figure 3.5

Choose **For Visitor** and then click the four windows option. You will see all four cameras you added.



Figure 3.6

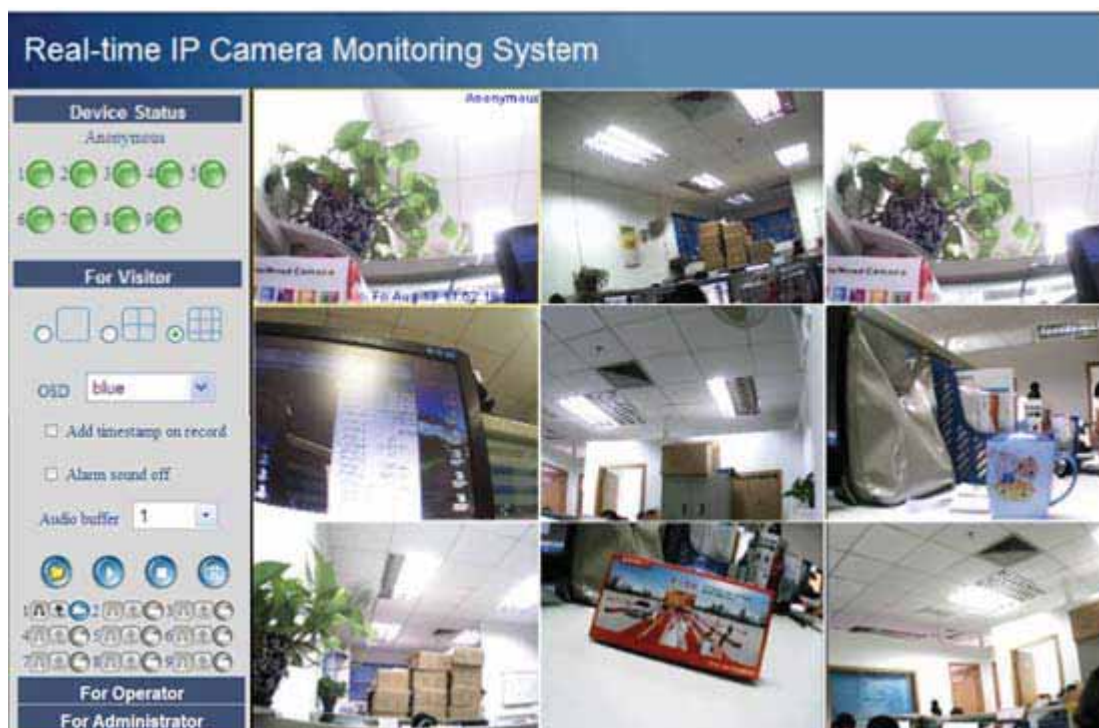


Figure 3.7

3.4.2 Add cameras in WAN

If you want to view all cameras via internet(remote computer), you will need to add them use DDNS domain name. First, make sure all of the cameras you added can be accessed through the internet. (read **How to set DDNS settings in Quick Installation Guide**)
Login the first camera using a DDNS domain name and port.

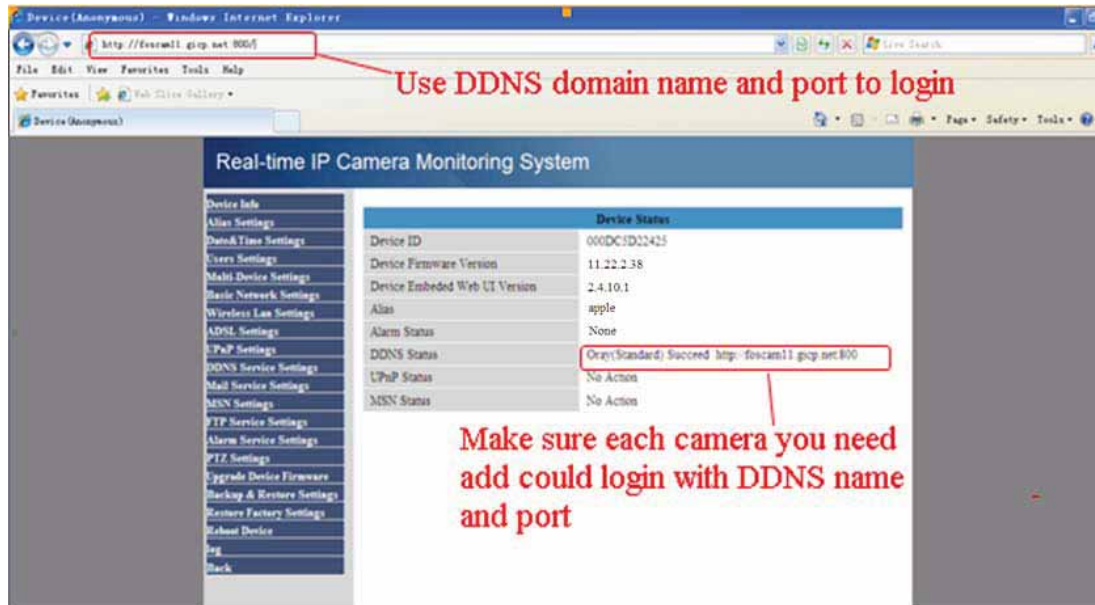


Figure 3.8

If you have several cameras, you can use the same DDNS domain name; you only need to set a different port number for each camera.

Click **Multi-Device Settings**. Choose **The 2nd Device**. Fill in the 2nd camera's name, DDNS domain name, port number. Enter user name and password and then choose Add. (Figure 3.9)

NOTE: Here Host must be filled in the second camera's DDNS domain name, not its LAN IP.

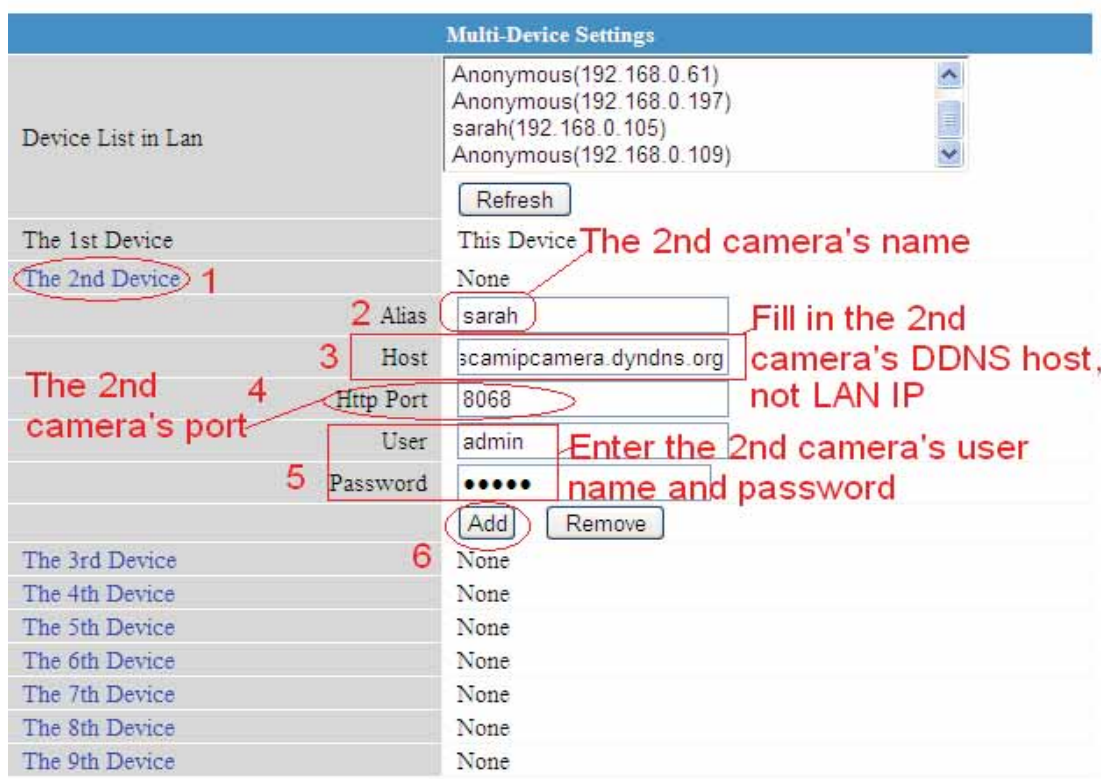


Figure 3.9

Add the other cameras in the same way. Click **Submit** to save.

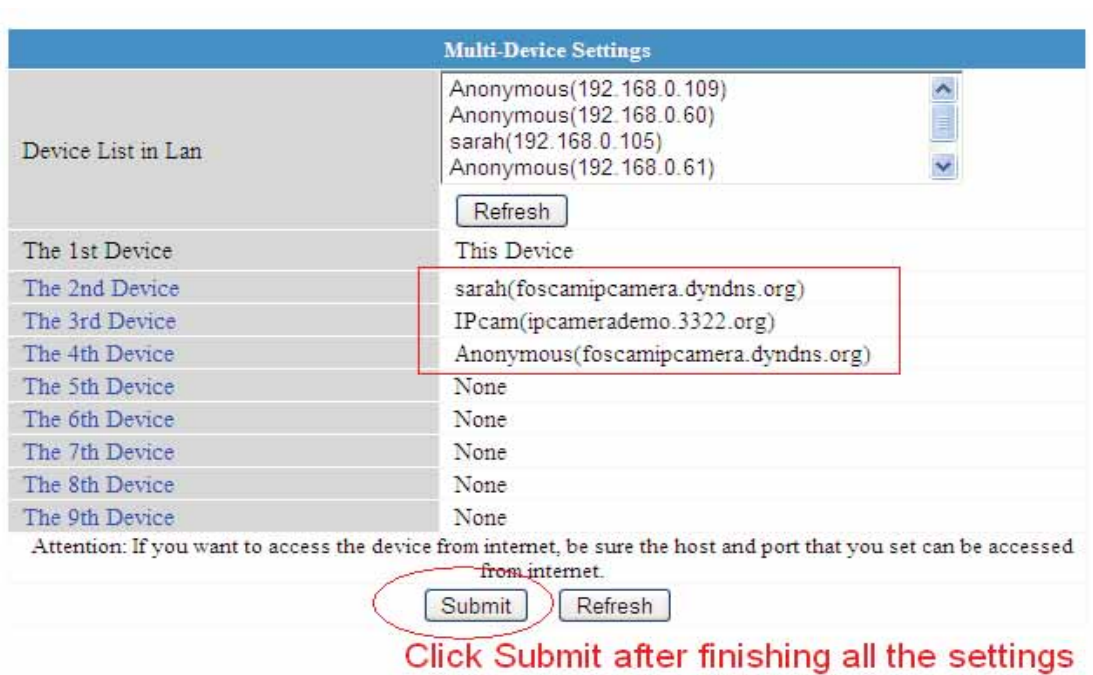


Figure 3.10

Go back to video window. You will see all of the cameras accessible through the internet. When you are away from home, you can use the first camera's DDNS domain name and port to view all the cameras via internet.



Figure 3.11

3.5 Basic Network Settings

If you want to set a static IP for the camera, select **Basic Network Settings**. Keep the camera in the same subnet of your router or computer.

Basic Network Settings	
Obtain IP from DHCP Server	<input type="checkbox"/>
IP Addr	192.168.0.109
Subnet Mask	255.255.255.0
Gateway	192.168.0.1
DNS Server	192.168.0.1
Http Port	8100
Network Lamp	<input checked="" type="checkbox"/>

Figure 3.12

It is the same result if set these settings in IP Camera Tool. (Figure 2.5)

If you don't know the subnet mask, gateway and DNS server, you can check your computer's local area connection as follows:

Control Panel→**Network Connections**→ **Local Area Connections** → Choose **Support**→**Details** (Figure 3.14)

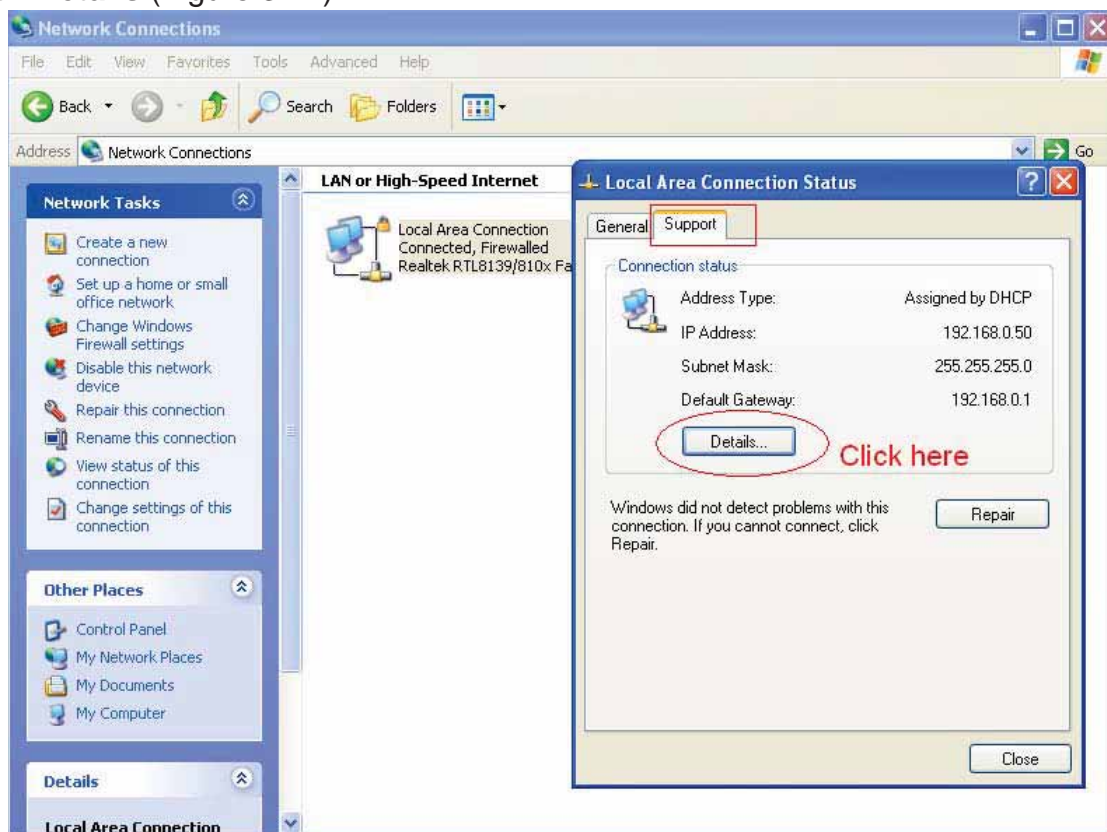


Figure 3.13

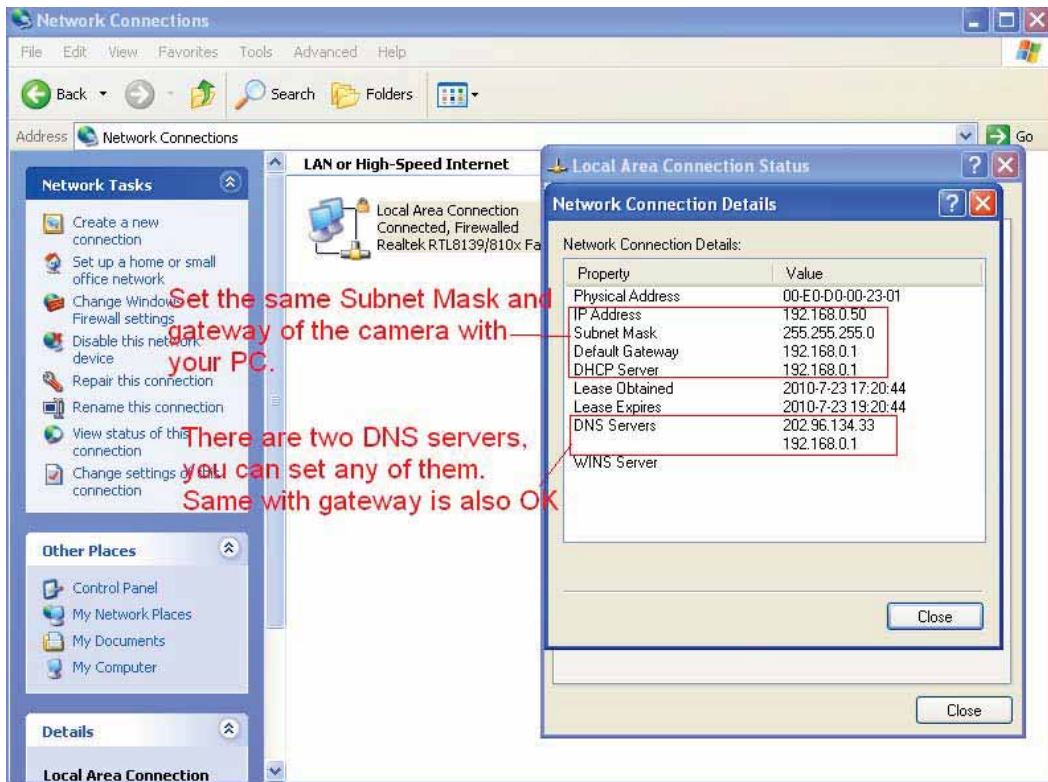


Figure 3.14

If you don't know the DNS server, you can use the same settings as the Default Gateway.

3.6 Wireless LAN Settings

Please view **How to set Wireless LAN Settings** in **Quick Installation Guide**.

3.7 ADSL Settings

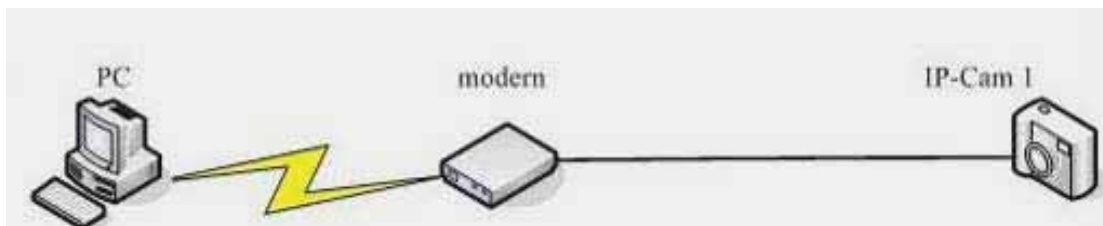


Figure 3.15

When connected to the Internet through ADSL directly, you can enter the ADSL username and password obtained from your ISP.

ADSL Settings	
Using ADSL Dialup	<input checked="" type="checkbox"/>
ADSL User	<input type="text" value="SZ10753952765089"/>
ADSL Password	<input type="password" value="••••••••"/>
<input type="button" value="Submit"/> <input type="button" value="Refresh"/>	

Figure 3.16

3.8 UPnP Settings

Choose **Using UPnP to MAP Port** and then click **Submit**.

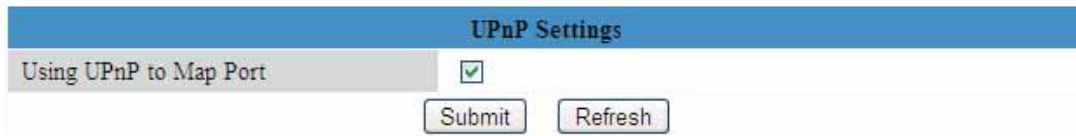


Figure 3.17

The camera's software will be configured port forwarding. We recommend you configure port forwarding manually on your router.

3.9 DDNS Service Settings

Please view the information in **Quick Installation Guide** about **How to set DDNS Service Settings**.

3.10 Mail Service Settings

If you want the camera to send emails when motion has been activated, **Mail Service Settings** will need to be configured.

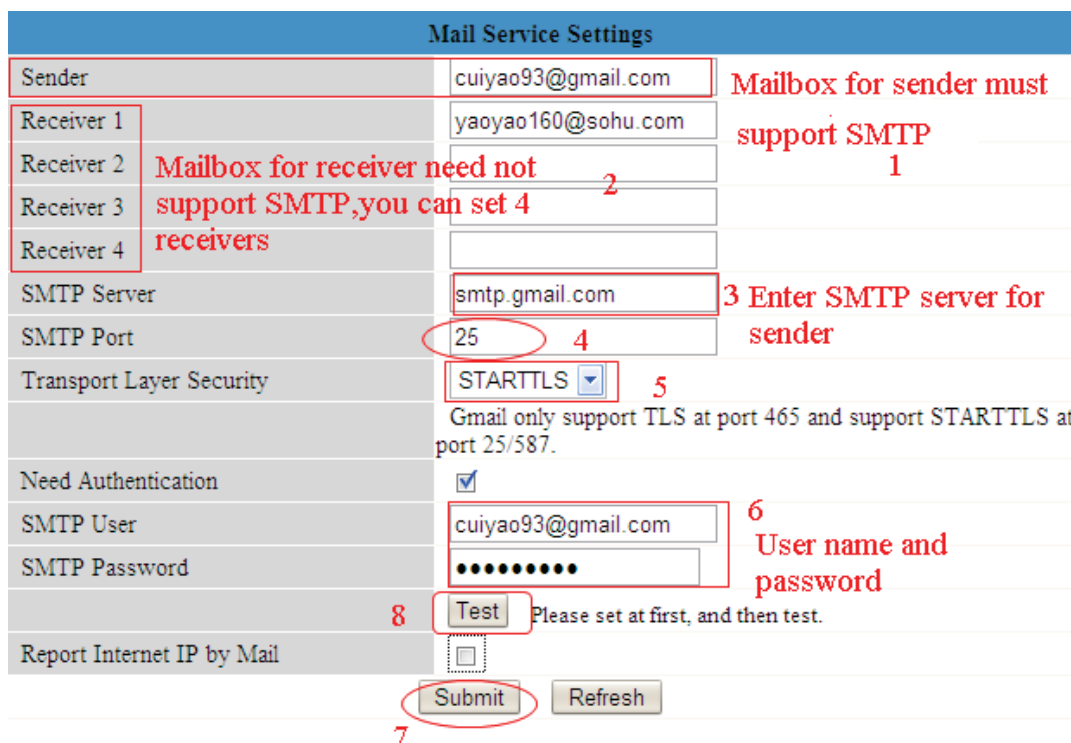


Figure 3.18

Make sure your mailbox for sender supports SMTP. Four recipients can be added to receive images. **SMTP port** is usually set as 25. Some SMTP servers have their own port, such as 587

or 465 and Transport Layer Security usually is None. If you use Gmail, Transport Layer Security must be set to TLS or STARTTLS and SMTP Port must be set to 465 or 25 or 587, which port you choose should be decided by which Transport Layer Security you select.

NOTE: Click **Submit** first before choosing **Test**.

Click **Test** to see if SMTP has been successfully configured.

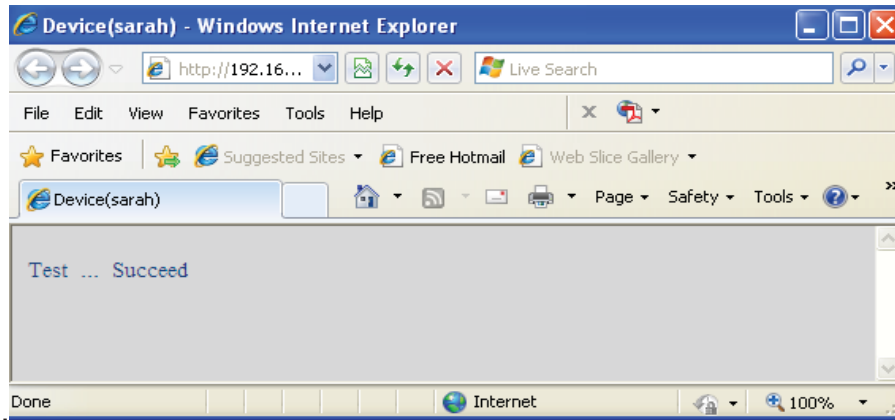


Figure 3.19

If an error occurs with one of the following errors after clicking **Test**, **verify** the information you entered is correct and select **Test** again.

- 1) Cannot connect to the server
- 2) Network Error. Please try later
- 3) Server Error
- 4) Incorrect user or password
- 5) The sender is denied by the server. Maybe the server need to authenticate the user, please check it and try again
- 6) The receiver is denied by the server. Maybe because of the anti-spam privacy of the server
- 7) The message is denied by the server. Maybe because of the anti-spam privacy of the server
- 8) The server does not support the authentication mode used by the device

Report Internet IP by Mail—If selected, you will receive emails which contains internet IP information such as When the camera is powered or the Internet IP has changed. (For example: IPCAM's urls is <http://119.123.207.96:8068>). Make sure the port is mapped to the router correctly.

3.11 MSN Setting

If you forget the domain name of the camera and you want to access the camera remotely, you must configure MSN.

Apply a MSN ID for IPCAM first, then do as the picture.

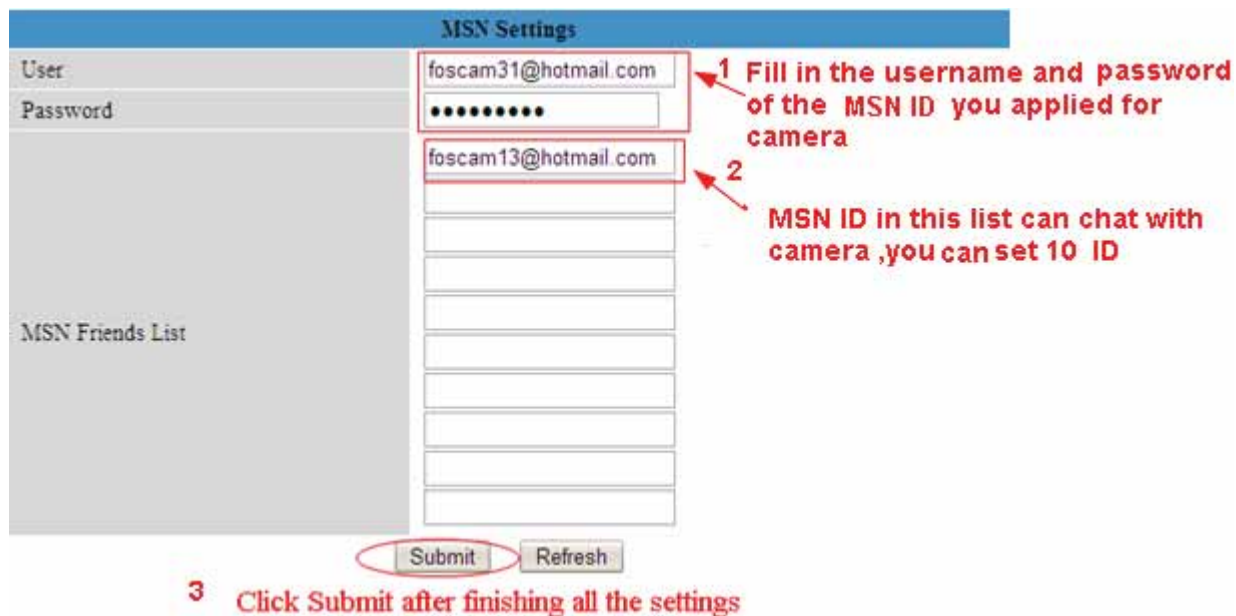


Figure 3.20a

Go back to the “Device Info” screen and verify the MSN settings are correct.

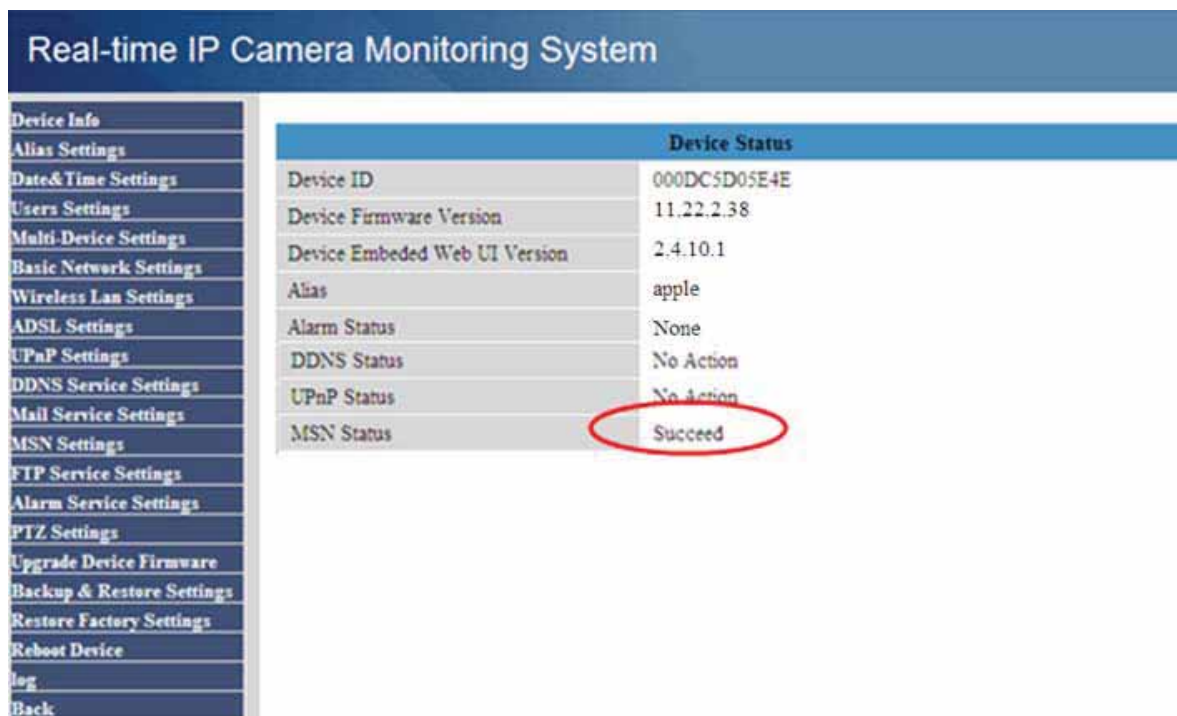


Figure 3.20b

All users entered on the MSN Friends list can chat with the camera .For example: “foscam13”(see Figure 3.20a,it is contained in the MSN Friends List) login MSN, double click the icon of “ foscam31 “(it is the MSN ID you applied for camera ,Figure3.20a) ,he or she can chat with IPCAM(Figure 3.21)

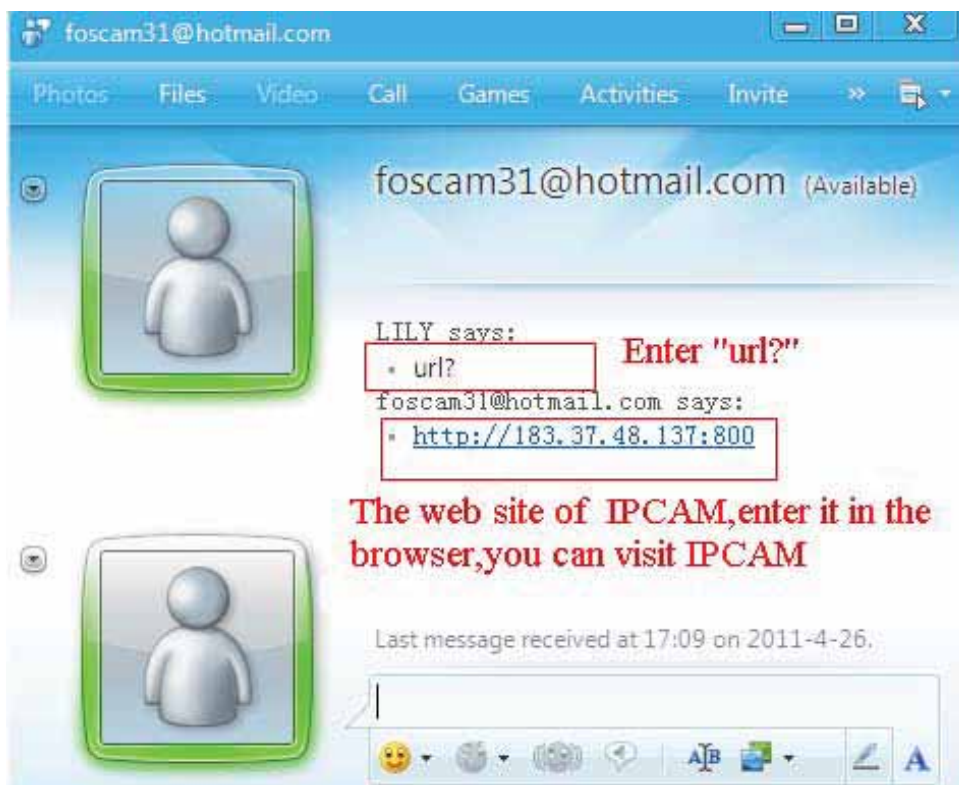


Figure 3.21

So, add your MSN ID to the MSN Friend List, you can chat with camera and get the access address and then access the camera.

Note: When you login the camera by IP Camera Tool, you can't login MSN of camera at the same time.

3.12 FTP Service Settings

If you want to upload images to your FTP server, you can set **FTP Service Settings**.

FTP Service Settings	
FTP Server	192.168.0.50
FTP Port	21
FTP User	sarah
FTP Password	•••••
FTP Upload Folder	/
FTP Mode	PORT
	Test Please set at first, and then test.
Upload Image Now	<input checked="" type="checkbox"/>
Upload Interval (Seconds)	30
Enable Set Filename	<input checked="" type="checkbox"/>
Filename	test
	Submit Refresh

Please click submit before test

Figure 3.22

FTP Service Settings	
FTP Server	<input type="text" value="ftp.mgenseal.com"/>
FTP Port	<input type="text" value="21"/>
FTP User	<input type="text" value="deotest@mgenseal.com"/>
FTP Password	<input type="password" value="•••••"/>
FTP Upload Folder	<input type="text" value="/"/>
FTP Mode	<input type="text" value="PORT"/> <input type="button" value="Test"/> Please set at first, and then test.
Upload Image Now	<input checked="" type="checkbox"/>
Upload Interval (Seconds)	<input type="text" value="30"/>
Enable Set Filename	<input checked="" type="checkbox"/>
Filename	<input type="text" value="test"/>
<input type="button" value="Submit"/> <input type="button" value="Refresh"/>	

Figure 3.23

FTP server: If your FTP server is set up in LAN, you can set as Figure 3.22

If you have a FTP server which you can access on the internet, you can set as Figure 3.23

FTP Port: Usually the port is 21

FTP Upload Folder: Make sure that the folder you plan to store images exists. For camera couldn't create the folder itself. Also, the folder must be erasable.

FTP Mode: It supports standard (POST) mode and passive (PASV) mode

Upload Image Now: This option will upload images when you enable the checkbox.

Enable Set Filename: You can set a name for the uploaded image when you enable the checkbox. If you select it, the uploaded image will be named after the filename you set. So the next image will cover the last image and the FTP Upload Folder will only have one uploaded image which named after the filename you set.

Filename: Fill in a name for the uploaded image. This name is different from the alarm image. You cannot change the name of the alarm image.

Upload Interval refers to the time between the current image and the next image.

Click **Submit** to save these settings. Click **Test**. The following screen displays if it succeeded. (Figure 3.24).

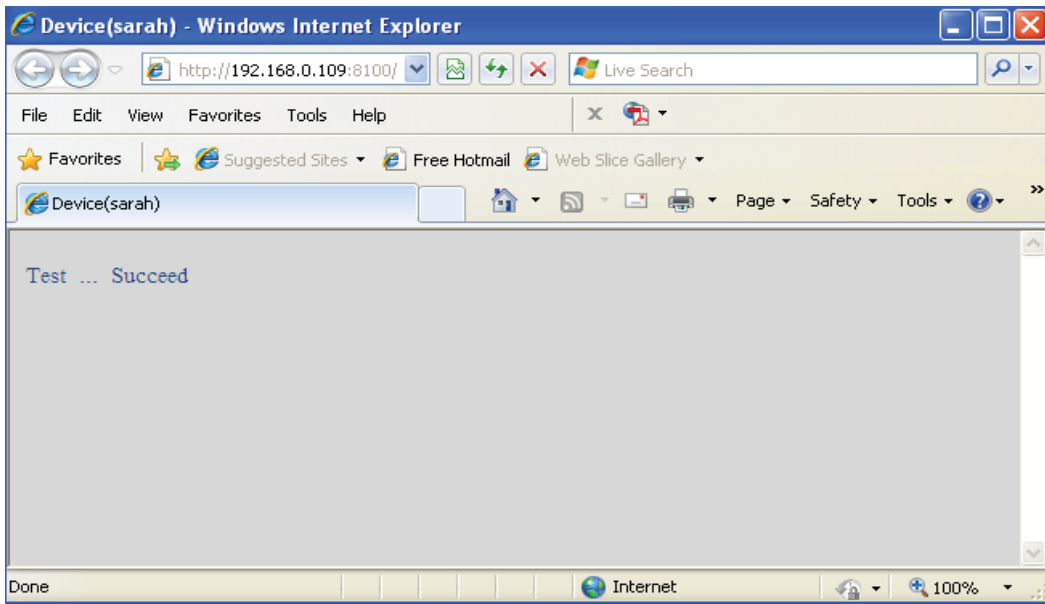


Figure 3.24

The following errors may occur:

- 1) Can not connect to the server. Check if the FTP Server is correct.
- 2) Network Error. Please try later.
- 3) Server Error.
- 4) Incorrect user or password. Check the username and password.
- 5) Cannot access the folder. Verify the folder exists and your account is authorized
- 6) Error in PASV mode. Verify the server supports PASV mode.
- 7) Error in PORT mode. PASV mode should be selected if the device is behind a NAT.
- 8) Cannot upload file. Verify your account is authorized

Check parameters. The format of image is similar to 00606E8C1930(sarah)_0_20100728114350_25.jpg

Check if your FTP server supports this file name format.

3.13 Alarm Service Settings

If you enable **Motion Detect Armed**, it will send email alerts and upload images when motion has been detected.

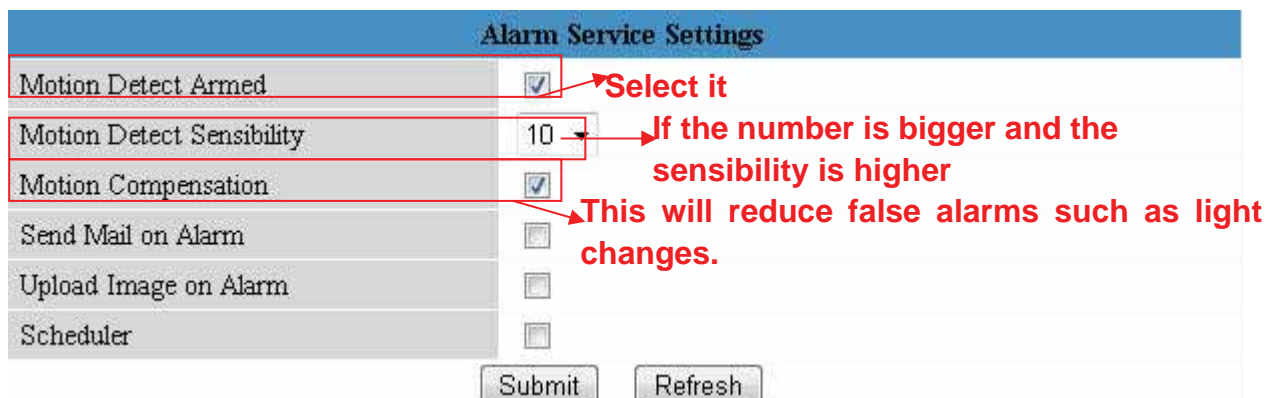


Figure 3.25

Device Status	
Device ID	000DC5D05E4E
Device Firmware Version	11.22.2.38
Device Embedded Web UI Version	2.4.10.1
Alias	apple
Alarm Status	Motion Detect Alarm Motion trigger
DDNS Status	No Action
UPnP Status	UPnP Succeed
MSN Status	No Action

Figure 3.26

If motion is detected after you enable **Motion Detect Armed**, the Alarm Status will turn to Motion Detect Alarm.

There are five alarm indicators:

- 1) The light turns red when motion is detected.



Figure 3.27

- 2) A beep sound when the light turns red.
- 3) The camera will record automatically for one minute after motion is detected. You can find the recording file in the folder which you set previously. (Figure 3.3)
- 4) Camera will send emails when motion is activated.

If you want to receive images when motion is detected, you must set **Mail Service Settings** first. (Figure 3.18) Then set motion alarm as follows:

Alarm Service Settings	
Motion Detect Armed	<input checked="" type="checkbox"/>
Motion Detect Sensibility	10 ▾
Motion Compensation	<input type="checkbox"/>
Send Mail on Alarm	<input checked="" type="checkbox"/> Select this option
Upload Image on Alarm	<input type="checkbox"/>
Scheduler	<input type="checkbox"/>

Figure 3.28

If you want to specify when the camera sends mails in a specific time when motion is detected, you can choose Scheduler and set the time range for motion alarm. (Figure 3.30)

- 5) Upload images via FTP server when motion trigger.

To upload images to an FTP server when motion is detected, you must set **FTP Service**

Settings first and then set motion alarm as pictured below (Figure 3.29)

Alarm Service Settings	
Motion Detect Armed	<input checked="" type="checkbox"/>
Motion Detect Sensibility	10
Motion Compensation	<input type="checkbox"/>
Send Mail on Alarm	<input type="checkbox"/>
Upload Image on Alarm	<input checked="" type="checkbox"/>
Upload Interval (Seconds)	2
Scheduler	<input type="checkbox"/>

Submit Refresh

Figure 3.29

There are two ways to set the alarm.

1) Alarm at any time when motion is detected.

Don't choose **Scheduler**. Click Submit and the camera will alarm at any time when motion is detected.

Another way: Choose Scheduler, and click "set All", you can see all time box will turn blue as the following picture. Click Submit and the camera will alarm at any time when motion is detected.

Alarm Service Settings	
Motion Detect Armed	<input checked="" type="checkbox"/>
Motion Detect Sensibility	10
Motion Compensation	<input type="checkbox"/>
Send Mail on Alarm	<input type="checkbox"/>
Upload Image on Alarm	<input type="checkbox"/>
Scheduler	<input checked="" type="checkbox"/>

set All clear All

Set	00	01	02	03	04	05	06	07	08	09	10	11	12	13	14	15	16	17	18	19	20	21	22	23
Clear	00	01	02	03	04	05	06	07	08	09	10	11	12	13	14	15	16	17	18	19	20	21	22	23
Day	0	1	2	3	4	5	6	7	8	9	10	11	12	13	14	15	16	17	18	19	20	21	22	23
Sun																								
Mon																								
Tue																								
Wed																								
Thu																								
Fri																								
Sat																								

Submit Refresh

Figure 3.30

2) Specify an alarm schedule.

If you want the camera to alarm during the time you set select **Scheduler** and set time range. If you want to select one serial area, you can click any number between 00 and 23 at the first row, the corresponding column will be selected and it will turn blue. For example, click the number "06" at the first row, you can see the column turn blue. That means the camera will alarm when motion is detected between 6 and 7 o'clock during everyday. Click the number "06" at the second row, you can cancel the corresponding column you set. And it will turn gray.

Alarm Service Settings	
Motion Detect Armed	<input checked="" type="checkbox"/>
Motion Detect Sensibility	10
Motion Compensation	<input type="checkbox"/>
Send Mail on Alarm	<input type="checkbox"/>
Upload Image on Alarm	<input type="checkbox"/>
Scheduler	<input checked="" type="checkbox"/>

Set	00	01	02	03	04	05	06	07	08	09	10	11	12	13	14	15	16	17	18	19	20	21	22	23
Clear	00	01	02	03	04	05	06	07	08	09	10	11	12	13	14	15	16	17	18	19	20	21	22	23
Day	0	1	2	3	4	5	6	7	8	9	10	11	12	13	14	15	16	17	18	19	20	21	22	23
Sun																								
Mon																								
Tue																								
Wed																								
Thu																								
Fri																								
Sat																								

Figure 3.31

If you want to select discrete area, you can click left button on the box of time range. It will turn blue. If you want to delete it, just click the left button and It will turn gray.

Alarm Service Settings	
Motion Detect Armed	<input checked="" type="checkbox"/>
Motion Detect Sensibility	10
Motion Compensation	<input type="checkbox"/>
Send Mail on Alarm	<input type="checkbox"/>
Upload Image on Alarm	<input type="checkbox"/>
Scheduler	<input checked="" type="checkbox"/>

Set	00	01	02	03	04	05	06	07	08	09	10	11	12	13	14	15	16	17	18	19	20	21	22	23
Clear	00	01	02	03	04	05	06	07	08	09	10	11	12	13	14	15	16	17	18	19	20	21	22	23
Day	0	1	2	3	4	5	6	7	8	9	10	11	12	13	14	15	16	17	18	19	20	21	22	23
Sun																								
Mon																								
Tue																								
Wed																								
Thu																								
Fri																								
Sat																								

Figure 3.32

If you want the camera alarm at most time, you can select set All first and then click left button at the box you don't want the camera alarm even when the motion is detected. The box will turn gray. Click Submit and it will take effect.

Alarm Service Settings	
Motion Detect Armed	<input checked="" type="checkbox"/>
Motion Detect Sensibility	10
Motion Compensation	<input type="checkbox"/>
Send Mail on Alarm	<input type="checkbox"/>
Upload Image on Alarm	<input type="checkbox"/>
Scheduler	<input checked="" type="checkbox"/>
<input type="button" value="set All"/> <input type="button" value="clear All"/>	
Set	00 01 02 03 04 05 06 07 08 09 10 11 12 13 14 15 16 17 18 19 20 21 22 23
Clear	00 01 02 03 04 05 06 07 08 09 10 11 12 13 14 15 16 17 18 19 20 21 22 23
Day	0 1 2 3 4 5 6 7 8 9 10 11 12 13 14 15 16 17 18 19 20 21 22 23
Sun	
Mon	
Tue	
Wed	
Thu	
Fri	
Sat	
<input type="button" value="Submit"/> <input type="button" value="Refresh"/>	

Figure 3.33

3.14 PTZ Settings

You can set pan/tilt speed. Normally, PT speed is 3. The larger the setting number, the lower speed. Don't enable the checkbox "disable preset" if you want to use the function of preset, it will be effective after you reboot device.

PTZ Settings	
disable preset	<input checked="" type="checkbox"/>
Go center on boot	<input checked="" type="checkbox"/>
PT speed	3
Upward patrol speed	3
Downward patrol speed	3
Leftward patrol speed	3
Rightward patrol speed	3
patrol rounds horizontal	4
patrol rounds vertical	5
<input type="button" value="Submit"/> <input type="button" value="Refresh"/>	

Figure 3.34

Patrol rounds horizontal: Set the round between 1 and 10, then click Submit. Back to "For Operator". Click the Horizon patrol button, the camera will patrol the rounds horizontally you set and then stop if you don't click Stop horizon patrol button. For example, you set 4 for the patrol rounds. Click submit and back to For Operator. Click the Horizon patrol button and do not click the Stop horizon patrol button, the camera will patrol 4 rounds and then stop automatically.

Patrol rounds vertical: Set the round between 1 and 10, then click submit. Back to “For Operator”. Click the Vertical patrol button, the camera will patrol the rounds vertically you set and then stop if you don’t click Stop vertical patrol button.

Note: Patrol rounds horizontal/vertical has no relation with the rotation rounds that camera reboots.

3.15 Upgrade Device Firmware

When you upgrade the camera, please upgrade system firmware first and then upgrade the Web UI.

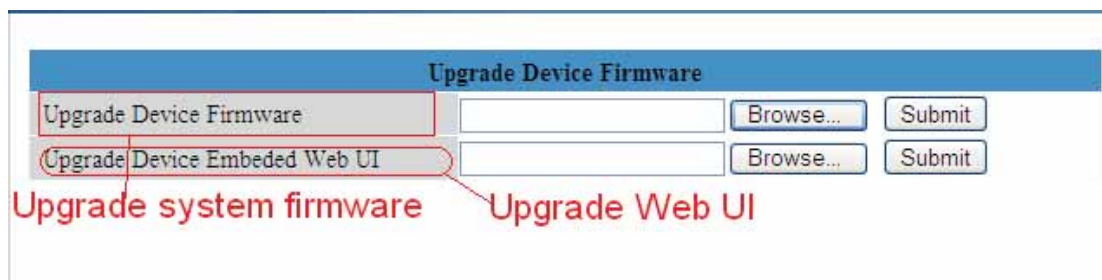


Figure 3.35

Click **Browse**, choose the correct bin file and then click **Submit** to upgrade. Don’t shut down the power during upgrade until the IP camera tool finds the camera again.

3.16 Backup & Restore Settings

Click **Submit** to save all the parameters you have set. These parameters will be stored in a bin file for future use. The bin file can be restored to load the parameters that were set.

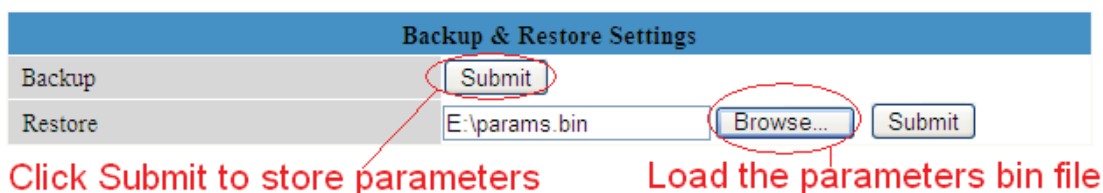


Figure 3.36

3.17 Restore Factory Settings

All parameters will return to factory settings if selected.

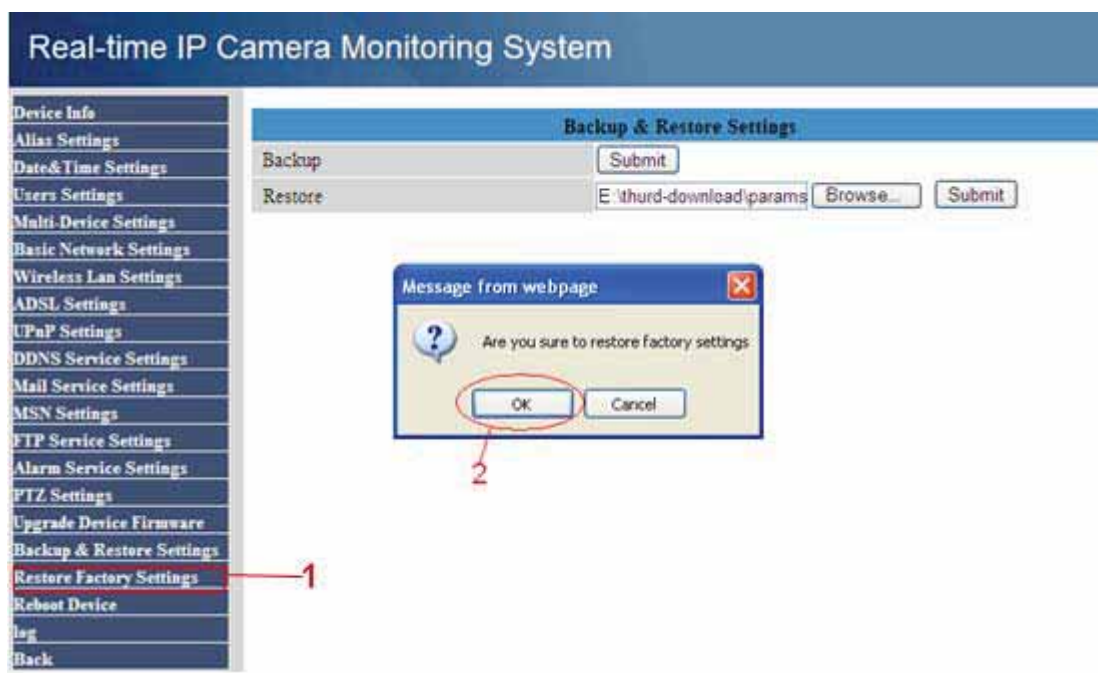


Figure 3.37

3.18 Reboot Device

Click **Reboot Device** to reboot the camera. This is similar to unplugging the power to the camera.

3.19 Log

The log record shows who accessed the camera (Figure 3.38).

log					
Fri, 2010-07-30 09:56:58	admin	192.168.0.26	access		
Fri, 2010-07-30 10:49:04	admin	192.168.0.50	access		
Fri, 2010-07-30 14:17:01	admin	192.168.0.50	access		

Figure 3.38

3.20 Back

This will take you back to the video window.

4 APPENDIX

4.1 Frequently Asked Questions

NOTE: Always verify network connections are working by checking the status of the indicators on the network server, hub, exchange and network card.

4.1.1 I have forgotten the administrator username and/or password

To reset the administrator username and password, press and hold down the RESET BUTTON for 15 seconds. Releasing the reset button will restore the factory default settings for username and password. You must power on the camera before reset.

Default administrator username: **admin**

Default administrator password: No password

4.1.2 Subnet doesn't match, dbclick to change

If IP Camera Tool shows the error "Subnet doesn't match, dbclick to change!", select **Obtain IP from DHCP server**. (Figure 2.4)

If this error still exists after obtain IP from DHCP server, check your local area connection of your computer and verify the subnet and gateway of the camera which should be the same subnet of your computer. (Figure 2.5)

4.1.3 No Pictures Problems

The video streaming is transmitted by the ActiveX controller. If ActiveX controller isn't installed correctly you will see no video image. There are two ways to resolve this problem:

- 1) Re-install "IP Camera Tool" and activeX control (recommended) (Figure 2.10~Figure 2.12)
- 2) Download ActiveX controller and set the security setting of IE: IE browser→Tool→Internet Proper→Security→Custom Level→ActiveX control and Plug-ins. The first three options should be set to be "Enable", The ActiveX programs read by the computer will be stored. As follows:

Enable: Download unsigned ActiveX controls

Enable: Initialize and script ActiveX controls not marked as safe

Enable: Run ActiveX controls and plug-ins

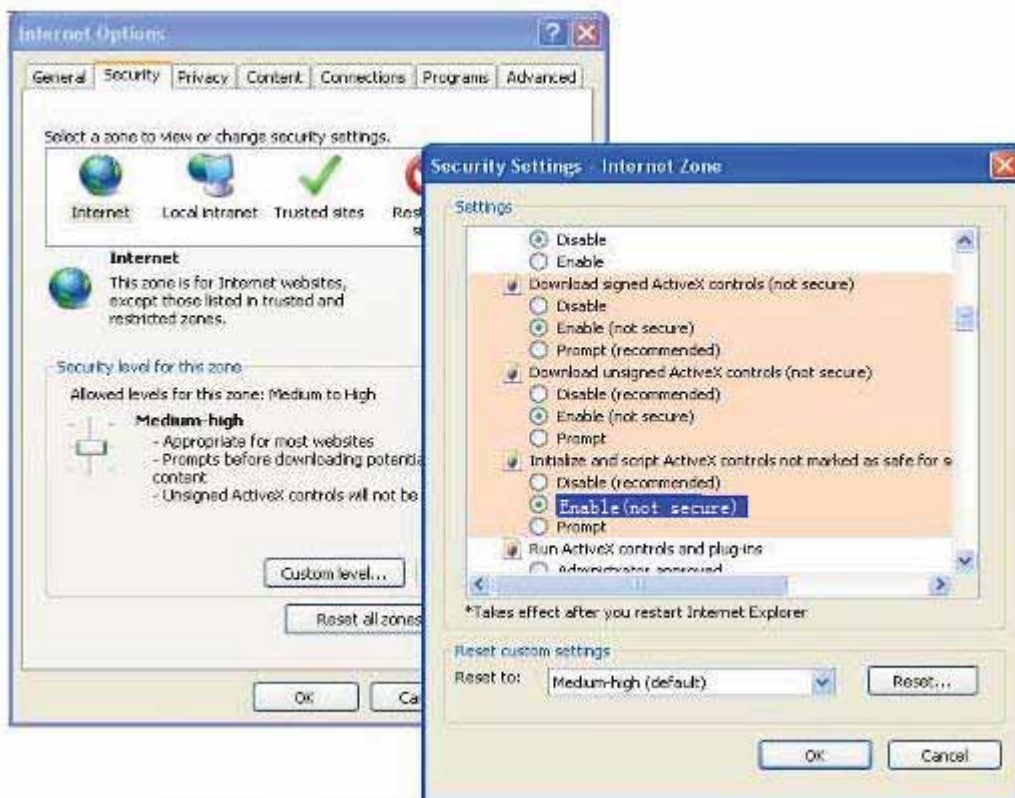



Figure 4.1

If you allow the activeX to run but still cannot see live video and a red cross in the center of the video. There is a yellow light in the device status. 

Change another port number. Do not use port 80. Use port 85, 8005.etc.

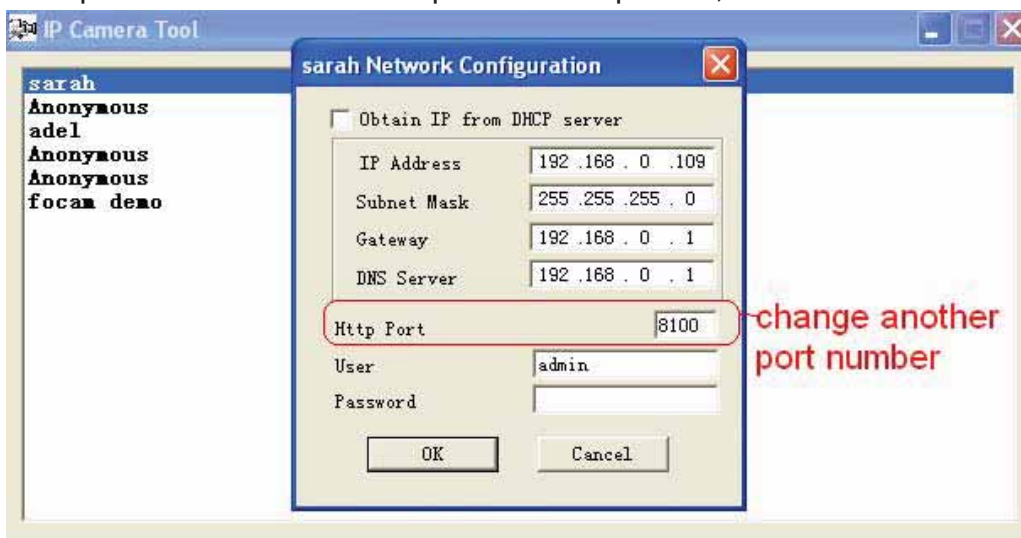


Figure 4.2

NOTE: Make sure that your firewall or anti-virus software does not block the camera or activeX. If you can not see live video, try shutting down the firewall or anti-virus software and try again.

4.1.4 Can't access IP camera on internet

Possible reasons why camera is not accessible on the internet:

- 1 ActiveX controller is not installed correctly (see more details: Figure 2.10~Figure 2.12).
- 2 The port which the camera uses is blocked by a Firewall or Anti-virus software. Try changing to another port number. (Figure 4.2)
- 3 Port forwarding is not successful (see more details in **Quick Installation Guide—How to set DDN Service settings**)

4.1.5 IP Camera Tool could not find camera's IP

Verify that the network cable is securely fastened to the camera.

Make sure DHCP is enabled on your router, do not enable MAC address filter.

Make sure that the firewall or anti-virus software does not block the camera. You can add the camera as a trusted site on your firewall or anti-virus software.

4.1.6 UPnP always failed

UPnP only contains port forwarding in our recent software. Sometimes, it may fail to do port forwarding automatically because of the firewall or anti-virus software. It may also be due to the router's security settings. We recommend manually configuring port forwarding and the camera can be viewed on the internet.

4.1.7 Couldn't find the shortcut on the desktop after install IP camera tool

If you use Windows7 or Vista and the shortcut is missing after installing the IP camera tool, check the path of IP Camera program.

For example, as it was pointing to C:\Windows\System32\IPCamera.exe.

Please fix this by pointing the shortcut to the correct path

C:\Windows\SysWOW64\IPCamera.exe. After this you could use the shortcut without any problems.

4.1.8 I can't change the record path

When you use Windows7 or Vista, you may be not able to change the record path for the security settings of computer. Please add the camera as a trusted site to resolve this issue. The steps are

IE browser→Tool→Internet Proper→Security→Trusted sites→Sites→Add

4.1.9 I can't find multi-device settings and record icon

Record and multi-device function are controlled by activeX controller.

These functions are not available in Firefox, Google Chrome and Safari.

4.1.10 Camera can not connect wireless

If your camera can not connect wirelessly after you set the wireless settings, unplug / plug the power cable. (for more details :**Wireless LAN settings** in **Quick Installation Guide**)

Usually, cameras can't connect wireless mainly because of wrong settings.

Verify that the SSID is correct; use the same encryption for router and camera. Don't enable MAC address filter.

4.1.11 I can't see other cameras which in multi-device when remote access

If you want to view all the cameras on the WAN, verify that each camera you added in the multi-device settings can be accessed by using the DDNS name and port number. Use the DDNS domain name not camera's LAN IP. (for more details: How to add cameras in WAN)

4.1.12 Only see black screen or undefined characters when using remote login

If you could access the login page remotely, this indicates that your DDNS settings are correct. If you are unable to see live video but only some undefined characters, this may be due to internet speed issues or the camera using Wi-Fi.

4.2 Default Parameters

Default network Parameters

IP address: obtain dynamically

Subnet mask: 255.255.255.0

Gateway: obtain dynamically

DHCP: Disabled

DDNS: Disabled

Username and password

Default administrator username: **admin**

Default administrator password: No password

4.3 Specifications

ITEMS		FI8910/FI8910W
Image Sensor	Image Sensor	High Definition Color CMOS Sensor
	Display Resolution	640 x 480 Pixels(300k Pixels)
	Lens	f: 3.6mm,F:2.4
	Mini. Illumination	0.5Lux
Lens	Lens Type	Glass Lens

	Viewing Angle	67 degree
	IR_CUT	Filter will switch automatically
Video	Image Compression	MJPEG
	Image Frame Rate	15fps(VGA),30fps(QVGA)
	Resolution	640 x 480(VGA), 320 x 240(QVGA)
	Flip Mirror Images	Vertical / Horizontal
	Light Frequency	50Hz, 60Hz or Outdoor
	Video Parameters	Brightness, Contrast
Audio	Input	Built-in Microphone
	Output	Built-in Speaker,with a audio jack
	Audio Compression	MJPEG
Communication	Ethernet	One 10/100Mbps RJ-45
	Supported Protocol	HTTP,FTP,TCP/IP,UDP,SMTP,DHCP,PPPoE,DDNS,UPnP,GP RS
	Wireless Standard	IEEE 802.11b/g/n
	Data Rate	802.11b: 11Mbps(Max.) 802.11g: 54Mbps(Max.)
	Wireless Security	WEP & WPA & WPA2 Encryption
	Infrared Light	11 IR LEDs, Night visibility up to 8 meters
	Dimension	117(L) x114(W) x129mm(H)
	Gross Weight	785g
	Net Weight	323g
Power	Power Supply	DC 5V/2.0A (EU,US,AU adapter or other types optional)
	Power Consumption	5Watts (Max.)
Environment	Operate Temper.	0° ~ 55°C (32°F ~ 131°F)
	Operating Humidity	20% ~ 85% non-condensing
	Storage Temper.	-10°C ~ 60° (14°F ~ 140°F)
	Storage Humidity	0% ~ 90% non-condensing
PC Requirements	CPU	2.0GHZ or above
	Memory Size	256MB or above
	Display Card	64M or above
	Supported OS	Microsoft Windows 2000/XP/Vista/Windows7-32bit/Windows7- 64bit/mac
	Browser	IE 6.0, IE7.0, IE8.0,IE9.0, Firefox2.0,Firefox3.0, Google Chrome, Safari or other standard browsers
Certification	CE,FCC	

5 OBTAINING TECHNICAL SUPPORT

While we hope your experience with the IPCAM network camera is enjoyable and easy to use, you may experience some issues or have questions that this User's Guide has not answered. Please contact your reseller and ask for help first, if they can not resolve your issue, please contact our company.

6 changes or modifications not expressly approved by the party responsible for compliance could void the user's authority to operate the equipment

7 This equipment has been tested and found to comply with the limits for a Class B digital device, pursuant to Part 15 of the FCC Rules. These limits are designed to provide reasonable protection against harmful interference in a residential installation. This equipment generates, uses and can radiate radio frequency energy and, if not installed and used in accordance with the instructions, may cause harmful interference to radio communications. However, there is no guarantee that interference will not occur in a particular installation.

If this equipment does cause harmful interference to radio or television reception, which can be determined by turning the equipment off and on, the user is encouraged to try to correct the interference by one or more of the following measures:

- Reorient or relocate the receiving antenna.
- Increase the separation between the equipment and receiver.
- Connect the equipment into an outlet on a circuit different from that to which the receiver is connected.
- Consult the dealer or an experienced radio/TV technician for help.

Power adapter

Manufacturer: Shenzhen Yingyuan Electronics Co.,Ltd

MODEL: SAW - 0502000

INPUT: 100-240V 50-60Hz 0.5 A

OUTPUT: 5V - 2000mA

The antennas used for this transmitter as shown in this filing must be installed to provide a separation distance of at least 20 cm from all persons and must not be co-located or operating in conjunction with any other antenna or transmitter

Warning statement at the user for keeping 20cm separation distance and the prohibition of operating to a person has been printed on the user manual.

