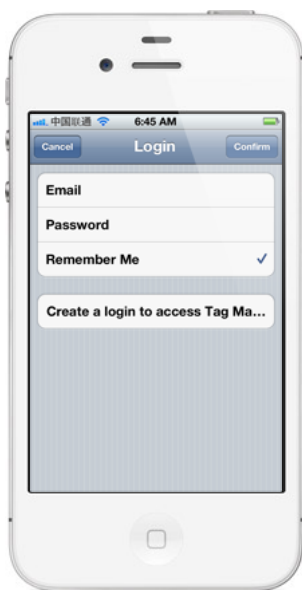
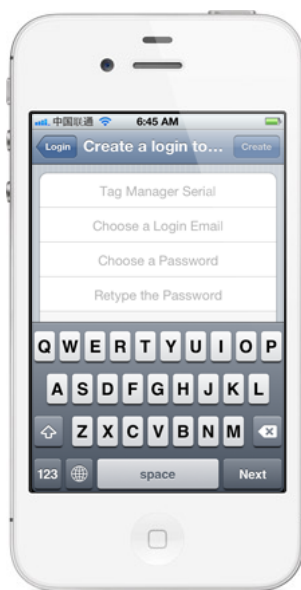


Step 1: Activate Your Ethernet Tag Manager

Install our iPhone/iPad app from AppStore by searching "Wireless Tag List".
Use the 12 digit serial numbers on your Ethernet Tag Manager to create a login. Keep the serial number in a safe place.



In the login screen, tap "Create a login to access Tag Manager" button.



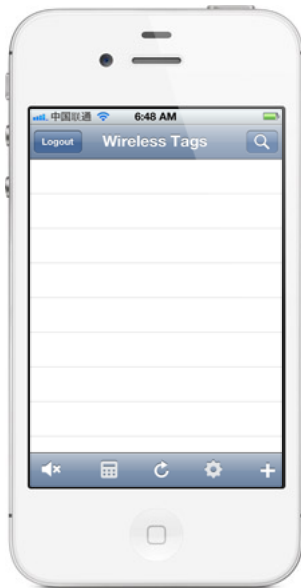
Fill in the serial number (case insensitive), login email (used to recover password), and choose a password.



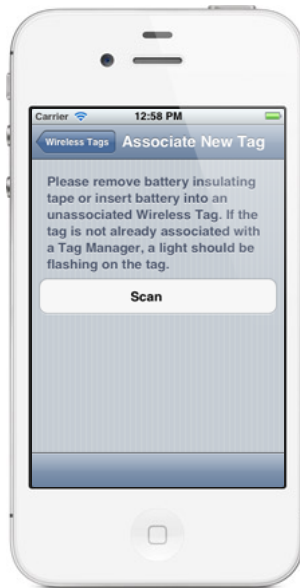
Tap "Create" button in the upper right corner to create an account. Uncheck "Allow creating more accounts..." unless you plan to create multiple logins to access the same Tag Manager.

Step 2: Associate New Wireless Sensor Tags (If Necessary)

Follow this step to associate each new Tags with the Tag Manager.



In the tag list screen, tap "+" button at the lower right corner.



An unassociated tag periodically broadcasts information about itself when powered on. Click "Scan" button to receive this information.

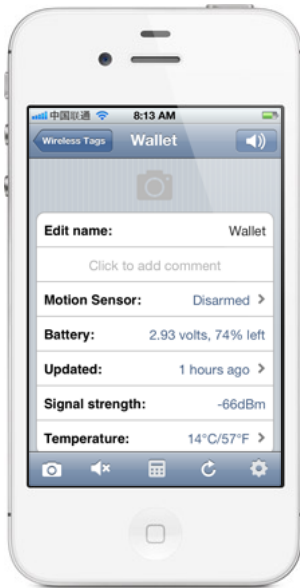


When an unassociated tag is found, its information is displayed. Assign a name and comment (optional) to the tag, then tap "Associate".

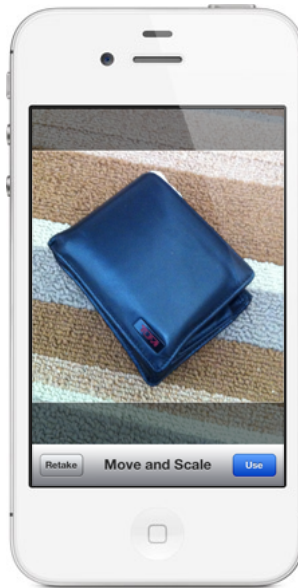
Step 3: Assign Tag Names and Pictures As Needed

You can edit tag names, comments and assign pictures to each Wireless Sensor Tag.

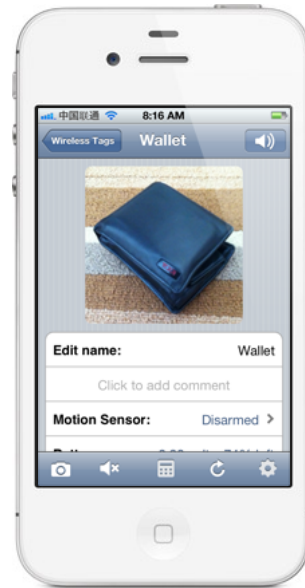
Assign Picture



Tap the picture icon in each Tag's screen to bring up the camera, or delete the picture if you already have one for the tag.

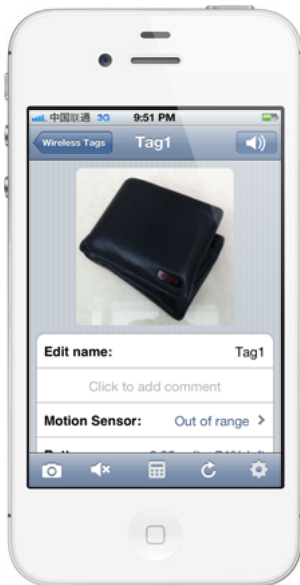


Take the picture and use finger to move or scale.



The picture is now assigned to the tag, and will be automatically visible on other devices accessing the same tag list in a few seconds.

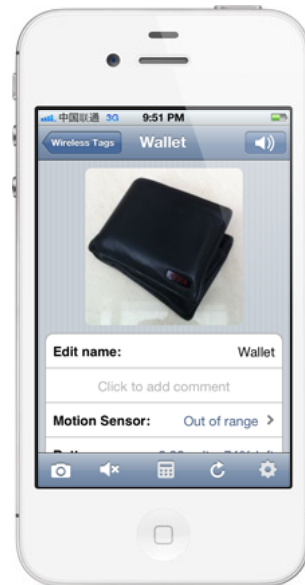
Edit Name



In the tag list screen, tap on the tag you want to edit to open the tag screen.



Tap at the right end of "Edit name:" row to edit the tag name, and tap "Done".

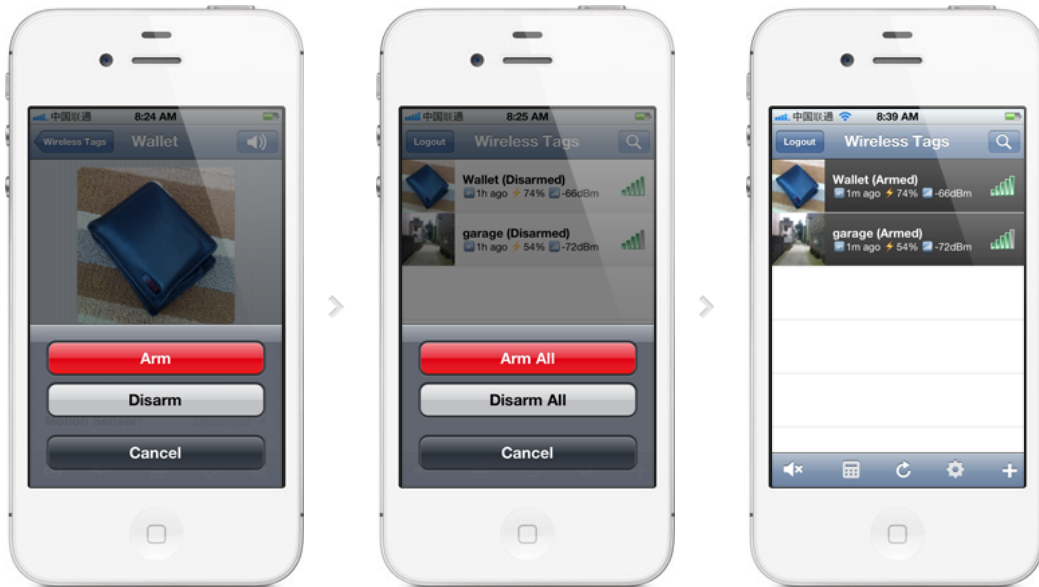


The new name is now assigned to the tag, and is automatically propagated to all other devices accessing the same tag.


Step 4: Arm/Disarm Motion Sensor, Temperature Monitor, and Enable/Disable Out-of-Range Notification

Motion sensor, temperature monitoring, and out-of-range notification are turned off until they are needed to conserve battery. Follow the steps below to turn them on/off as needed.

Motion Sensor

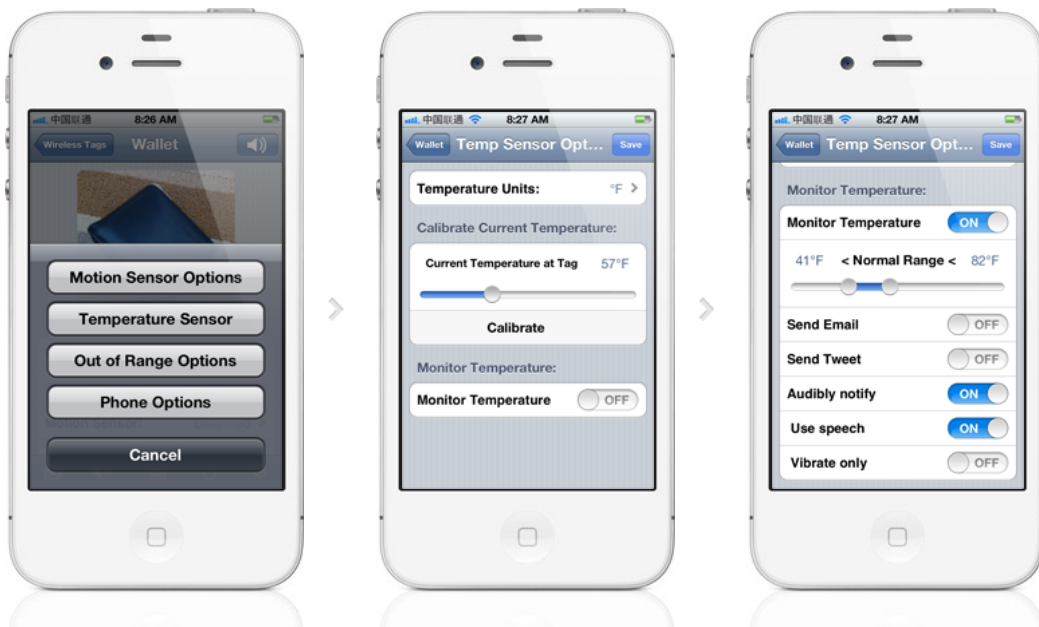


Tap the tag of interest on the list screen to open the details screen, and tap the keypad icon at the bottom.


Instead of  arming/disarming motion sensor for each tag individually, you can also tap the keypad icon in the tag list screen to arm/disarm all motion sensor tags.

When motion sensor is armed, the tag on the list will have a black background.

Temperature Monitoring



Tap the tag of interest on the list screen to open the details screen, and tap the keypad icon at the bottom.

Instead of  arming/disarming motion sensor for each tag individually, you can also tap the keypad icon in the tag list screen to arm/disarm all motion sensor tags.

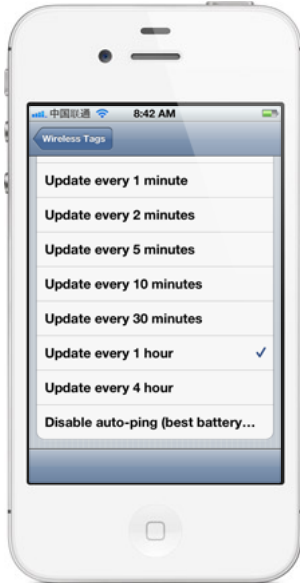
When motion sensor is armed, the tag on the list will have a black background.

Open the temperature sensor options for each tag individually by tapping the gear icon at the bottom.

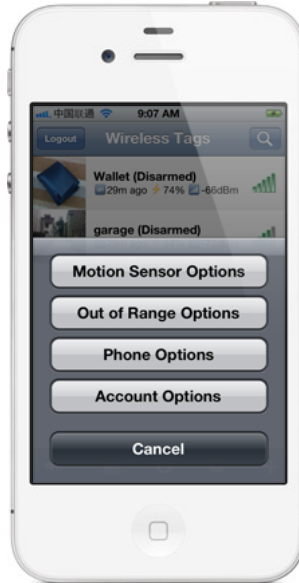
The temperature sensor often needs calibration to remove an offset. In the "Calibrate Temperature at Tag" section, set the correct current temperature, and tap the "Calibrate" button.

Turn on "Monitor Temperature", choose notification settings you want, and tap "Save". The tag will notify you when the temperature exceeds upper or lower limits, or returned to normal range.

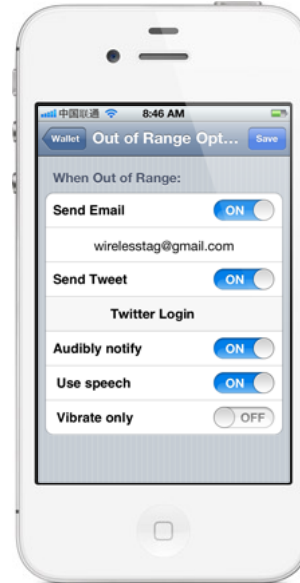
Out-of-Range Notification



Tap the refresh icon at the bottom of tag list screen, and choose any of the "Update every ..." options. Longer interval results in longer battery life but longer the out-of-range notification delay, and vice versa.



Tap the gear icon at the bottom right corner to open "Out of Range Options" for specific tag or all tags on list.



Set the notification methods you want and tap "Save".

Motion Sensor Options:

Sensitivity, Responsiveness, Notification Settings and Scheduling

Tune the sensitivity and responsiveness of the motion sensor to suit your application. In motion detection mode, choose to remember moved state indefinitely or reset to armed state after a while. In door/gate mode, choose the threshold angle (23 degree is recommended for automatic garage doors, 2~5 degree for regular doors), or choose to get notified only when door is opened for too long.

Choose to get notified by emails, tweets, speech, or whether to make tag beep upon motion.

Set the schedule to automatically arm or disarm the motion sensor at certain time of the day, and days of the week.

Sensitivity/Responsiveness



Tap the gear icon at the bottom of tag list to open the Options screen for all motion sensor tags on the list, or on the details screen for each tag to open the Options screen for that individual tag.

You can choose sensitivity (50% is recommended to eliminate false alarms in most environment), and responsiveness ("Slow" is 12x the delay and battery life of "Fast") that best suit your application.

When door/gate mode is enabled, you can choose the threshold angle, when tag orientation changes more than this, the door is deemed open, when tag orientation returns within this threshold, it is deemed closed.

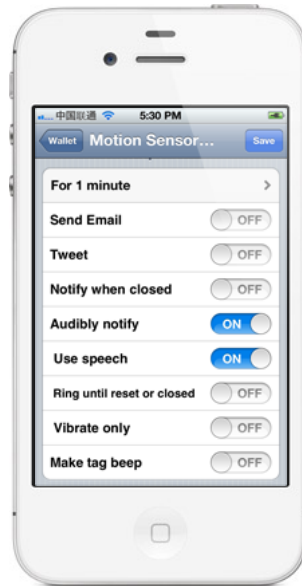
Notification Settings



When not in door/gate mode, after movement is detected, by default the system remembers the tag has been moved indefinitely. Instead you can choose to have the tag automatically reset to armed state after a while.

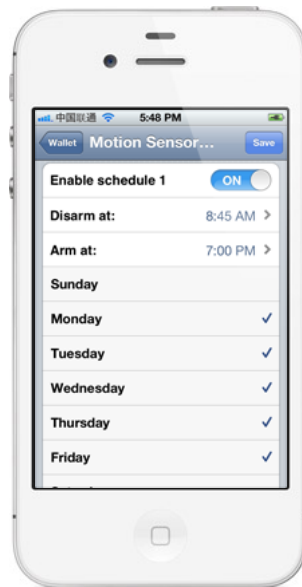
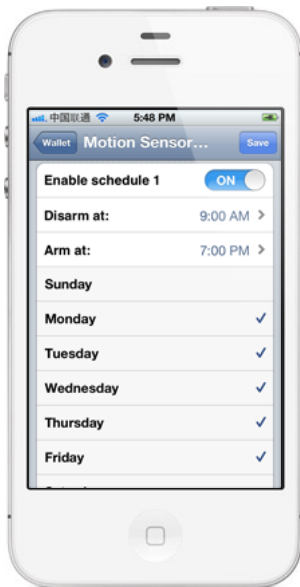


When in door/gate mode, you can choose to be notified only when it is been open for longer than a certain time period.



You can choose to be notified by email, have the system post a tweet on your Twitter account, beep or speak on your phones, or make the tag beep.

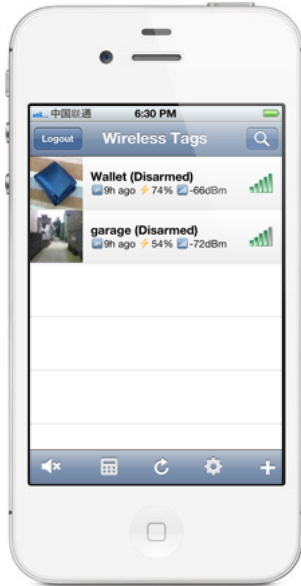
Arm/Disarm Scheduling



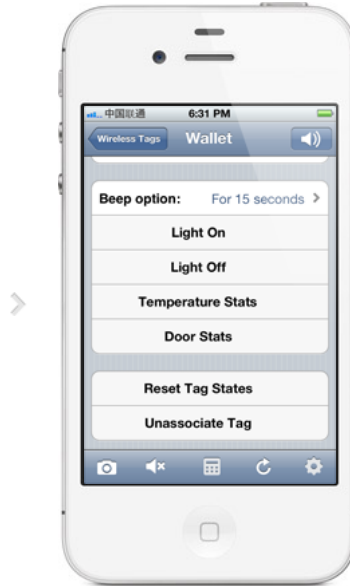
Each tag has two sets of auto-arming/disarming schedule, each for specified days of the week (mutually exclusive). Specify time of day to disarm (for example, in the morning), and arm (for example, after dark), for each of the checked days of the week.

Beeping a Tag, Stopping the Beep, and Beep Options

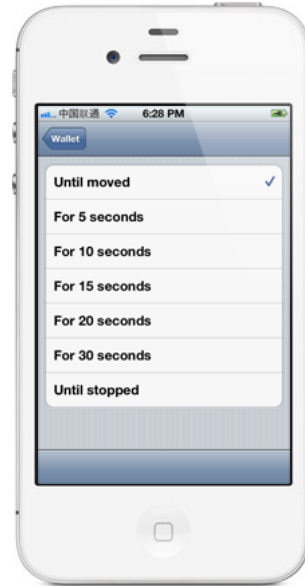
Every wireless sensor tag has a beep function to help you find missing tags. Attach the tag to key chains, put inside your wallet, or strap to TV remote controls, and never waste time looking for these items again.



In the tag list screen, tap on the tag you want to beep. The tag details screen opens.



Beep the tag by tapping on the speaker button at the upper right corner. To change beep options, scroll down until you see "Beep option". Tap on it to choose the option.



You can choose beep until moved, for 5,10,15,20,30 seconds, or indefinitely beep until stopped by the stop beep button at the bottom of the tag details screen.

Door Stats and Temperature Stats

Each tag automatically logs temperature and each time it is moved, opened or closed, so you can always check what happened while you were away.

Door Stats



In the tag detail screen, scroll down and tap on "Door Stats" button.

For every day in the past 2 months (when there is data available), number of times door is opened and average duration vs. time of the day are displayed.

When you tap on anywhere on the graph for a particular date, a detail history for that day is displayed. You can sort by time of the day, how long the door has been open, or event type (opened or moved).

Temperature Stats



In the tag detail screen,

For every day in the past 2

scroll down and tap on "Temperature Stats" button.

months (when there is data available), temperature at that tag and battery voltage vs. time of the day are displayed.

This device complies with Part 15 of the FCC Rules. Operation is subject to the following two conditions:

1. This device may not cause harmful interference.
2. This device must accept any interference received, including interference that may cause undesired operation.

Modifications: Any modifications made to this device that are not approved by Cao Gadgets LLC may void the authority granted to the user by the FCC to operate this equipment.

NOTE: This equipment has been tested and found to comply with the limits for a Class B digital device, pursuant to Part 15 of the FCC Rules. These limits are designed to provide reasonable protection against harmful interference in a residential installation. This equipment generates, uses and can radiate radio frequency energy and, if not installed and used in accordance with the instructions, may cause harmful interference to radio communications. However, there is no guarantee that interference will not occur in a particular installation. If this equipment does cause harmful interference to radio or television reception, which can be determined by turning the equipment off and on, the user is encouraged to try to correct the interference by one or more of the following measures: - Reorient or relocate the receiving antenna. - Increase the separation between the equipment and receiver. - Connect the equipment into an outlet on a circuit different from that to which the receiver is connected. - Consult the dealer or an experienced radio/TV technician for help.



© 2010-2012 Cao Gadgets LLC