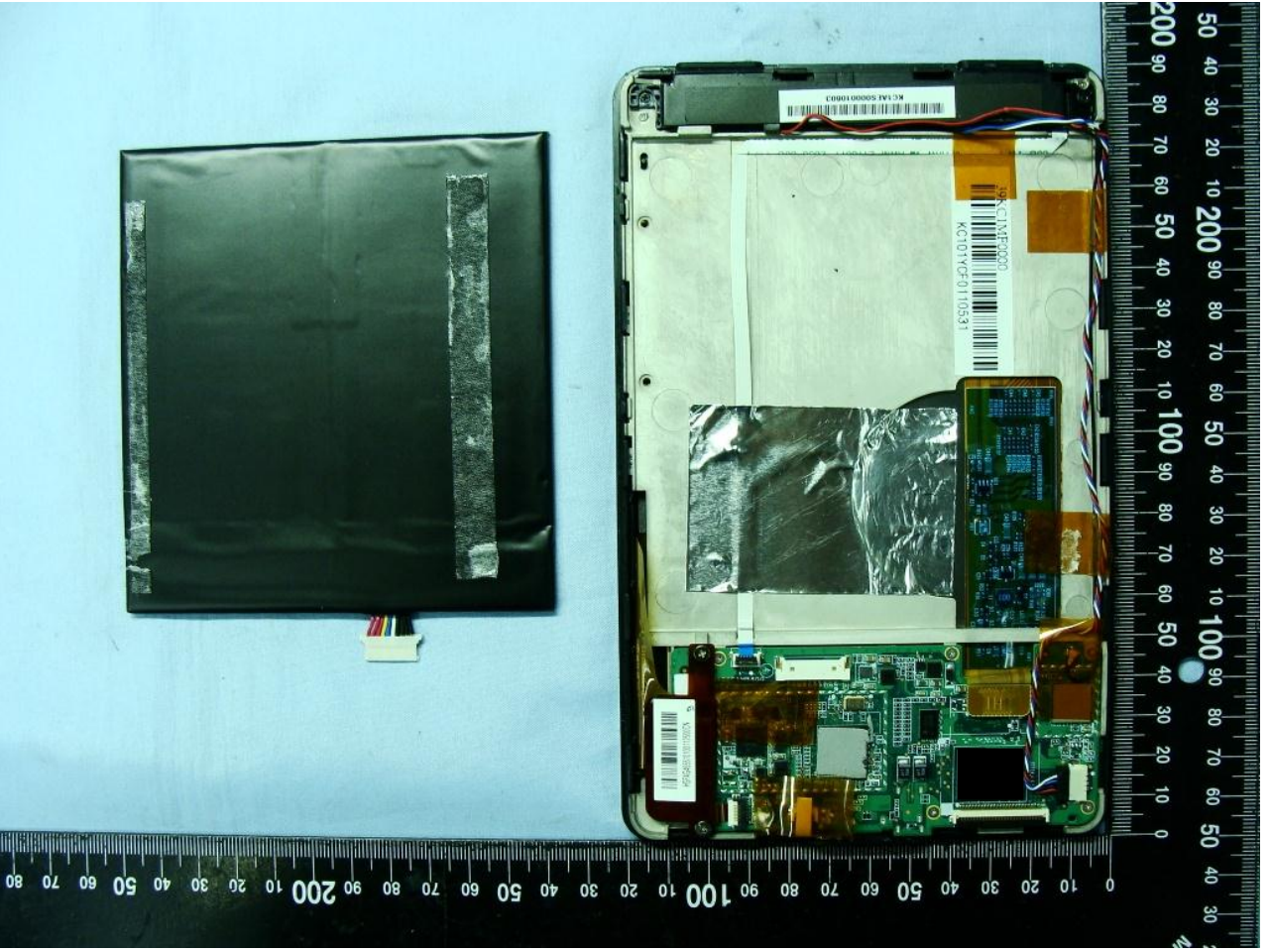
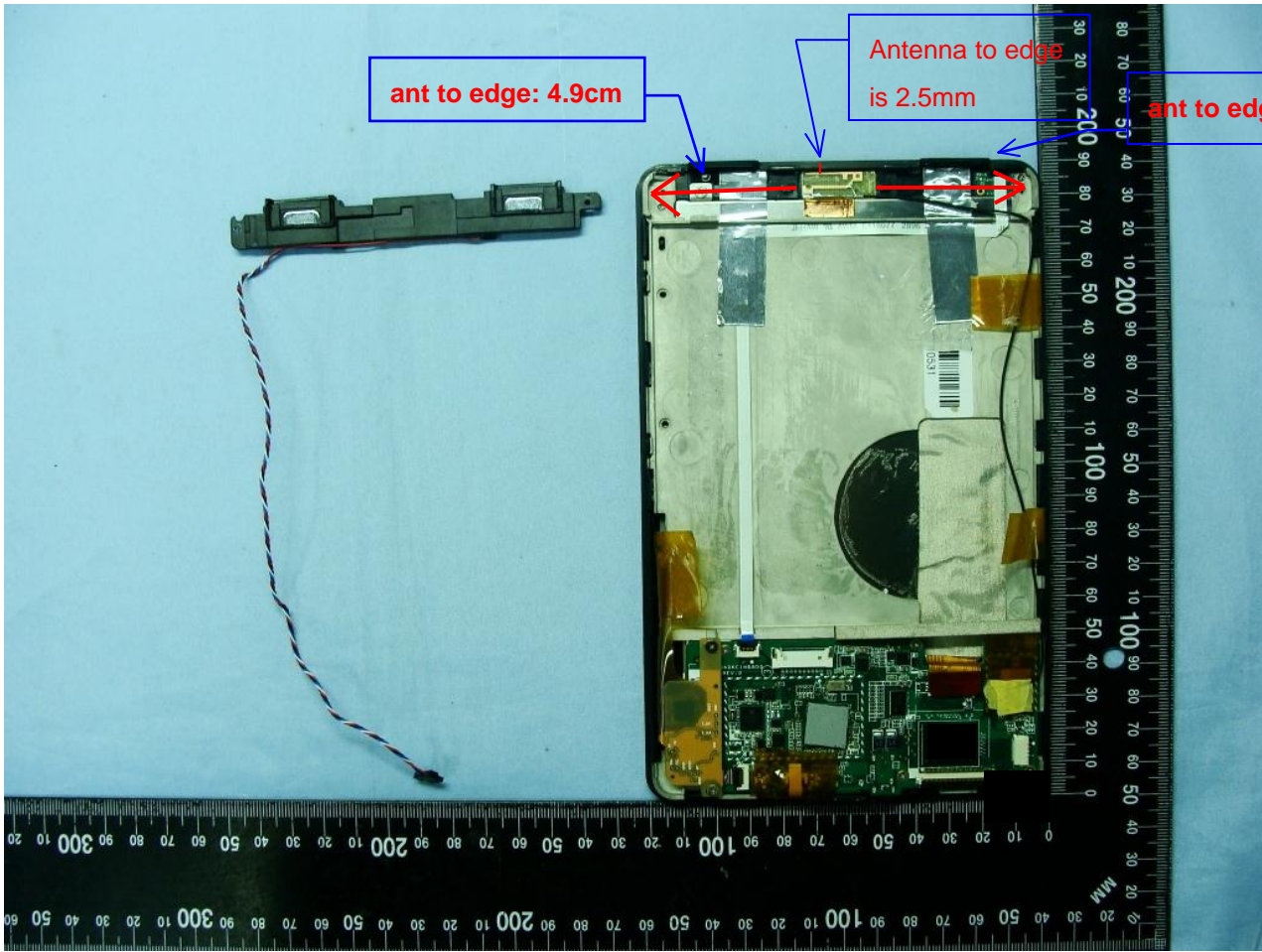


2. Internal Photograph of EUT



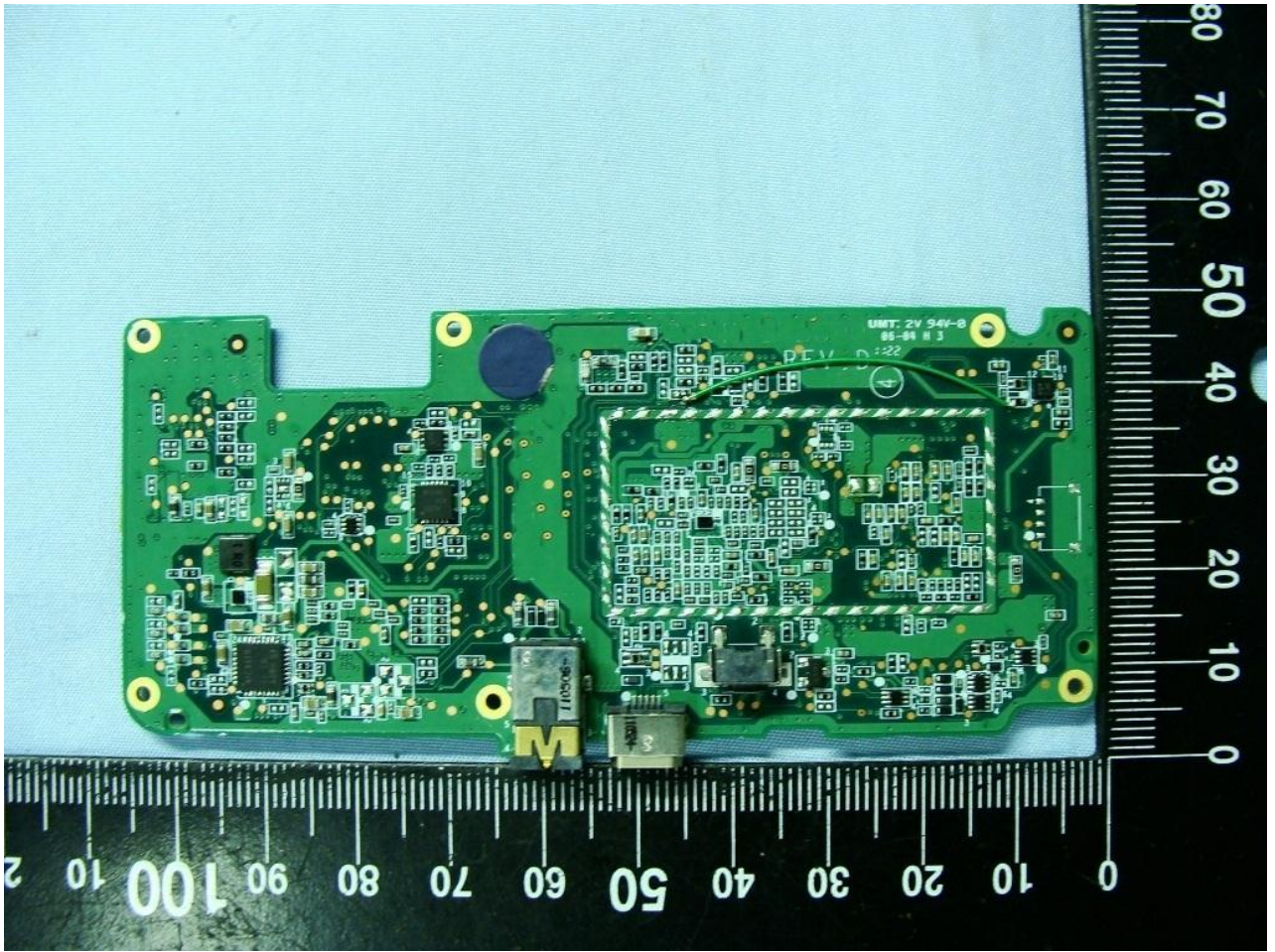


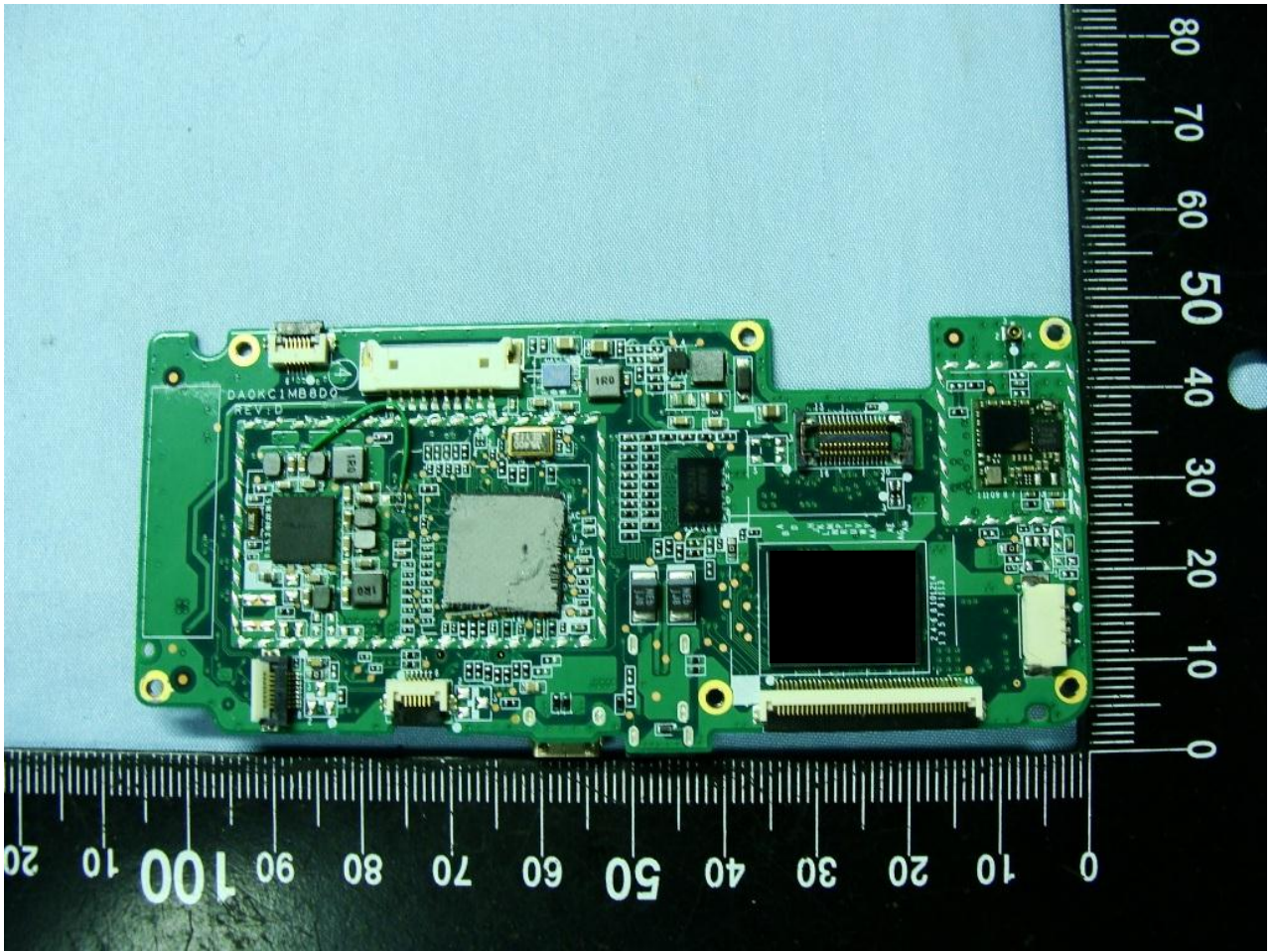


ant to edge: 4.9cm


Antenna to edge  
is 2.5mm

ant to edge:4.9cm





鋰離子電池組/锂离子电池組 / LI-ION Polymer Battery Pack  
電壓/电压 3.7V 容量/容量 4400mAh/16.28Wh  
ATL PN: GB-S02-3555A2-0200  
型号/Model No.: 3555A2L

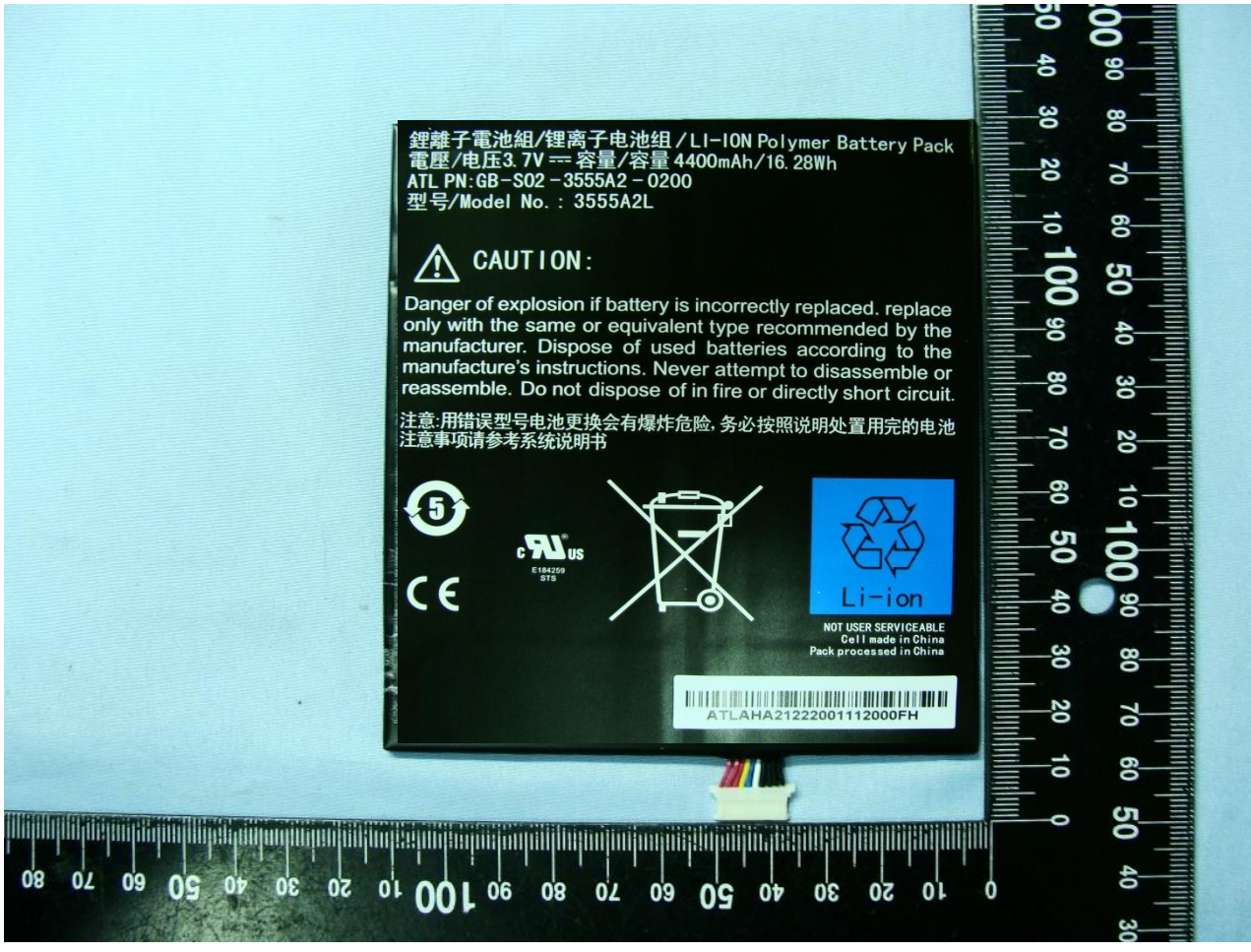
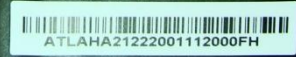
 CAUTION:

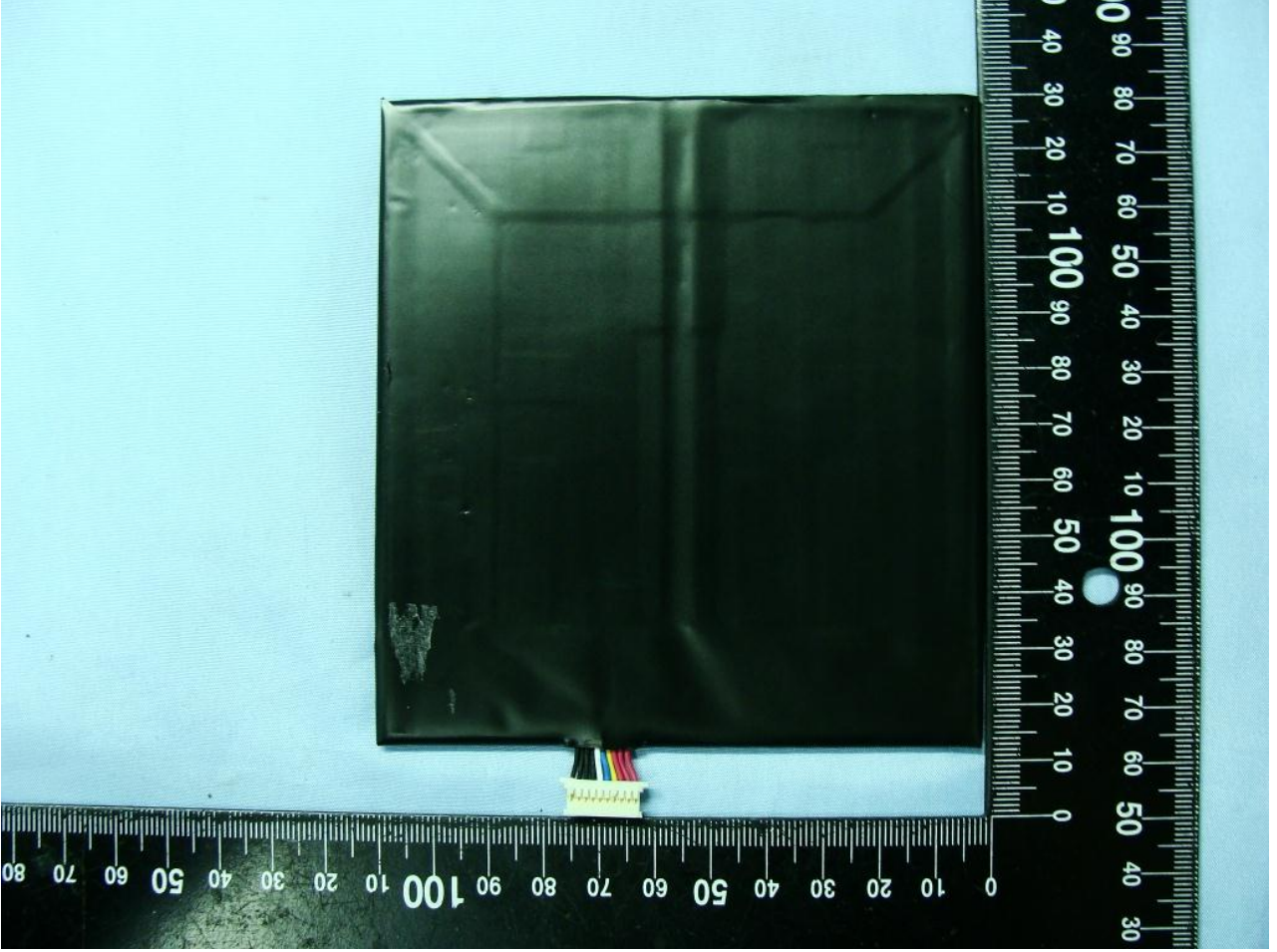
Danger of explosion if battery is incorrectly replaced. replace only with the same or equivalent type recommended by the manufacturer. Dispose of used batteries according to the manufacture's instructions. Never attempt to disassemble or reassemble. Do not dispose of in fire or directly short circuit.

注意:用错误型号电池更换会有爆炸危险. 务必按照说明处置用完的电池  
注意事项请参考系统说明书



NOT USER SERVICEABLE  
Cell made in China  
Pack processed in China





WLAN Antenna

