

FCC TEST REPORT

Client Name : Sariana LLC
Address : 7365 Mission Gorge Rd, Suite G, San Diego, CA 92120,
USA
Product Name : 3-in-1 Magnetic Wireless Charging Stand
Date : Sept. 28, 2021



Shenzhen Anbotek Compliance Laboratory Limited

Contents

1. General Information.....	4
1.1. Client Information.....	4
1.2. Description of Device (EUT).....	4
1.3. Auxiliary Equipment Used During Test.....	5
1.4. Description of Test Modes.....	5
1.5. Description Of Test Setup.....	7
1.6. Test Equipment List.....	8
1.7. Measurement Uncertainty.....	9
1.8. Description of Test Facility.....	9
2. Summary of Test Results.....	10
3. Conducted Emission Test.....	11
3.1. Test Standard and Limit.....	11
3.2. Test Setup.....	11
3.3. Test Procedure.....	11
3.4. Test Data.....	11
4. Radiation Spurious Emission.....	16
4.1. Test Standard and Limit.....	16
4.2. Test Setup.....	16
4.3. Test Procedure.....	17
4.4. Test Data.....	17
5. Antenna Requirement.....	22
5.1. Test Standard and Requirement.....	22
5.2. Antenna Connected Construction.....	22
APPENDIX I -- TEST SETUP PHOTOGRAPH.....	24
APPENDIX II -- EXTERNAL PHOTOGRAPH.....	26
APPENDIX III -- INTERNAL PHOTOGRAPH.....	30

TEST REPORT

Applicant : Sariana LLC
Manufacturer : Sariana LLC
Product Name : 3-in-1 Magnetic Wireless Charging Stand
Model No. : ST-WMCS3M, ST-WMCS3S
Trade Mark : **S A T E C H I**
Input: DC 5V-9V/3A, 12V/2A, 15V/2A
Rating(s) : Phone output: 5W, 7.5W, 10W, 15W
Airpods output: 5W
Apple watch output: 5W
Test Standard(s) : **FCC Part15 Subpart C, Paragraph 15.209**
Test Method(s) : **ANSI C63.10: 2020**

The device described above is tested by Shenzhen Anbotek Compliance Laboratory Limited to determine the maximum emission levels emanating from the device and the severe levels of the device can endure and its performance criterion. The measurement results are contained in this test report and Shenzhen Anbotek Compliance Laboratory Limited is assumed full of responsibility for the accuracy and completeness of these measurements. Also, this report shows that the EUT (Equipment Under Test) is technically compliant with the FCC Part 15 Subpart C requirements.

This report applies to above tested sample only and shall not be reproduced in part without written approval of Shenzhen Anbotek Compliance Laboratory Limited.

Date of Receipt

Aug. 17, 2021

Date of Test

Aug. 17~Sept. 14, 2021

Prepared By



(Ella Liang)

Approved & Authorized Signer



(Kingkong Jin)

1. General Information

1.1. Client Information

Applicant	:	Sariana LLC
Address	:	7365 Mission Gorge Rd, Suite G, San Diego, CA 92120, USA
Manufacturer	:	Sariana LLC
Address	:	7365 Mission Gorge Rd, Suite G, San Diego, CA 92120, USA
Factory	:	Sariana LLC
Address	:	7365 Mission Gorge Rd, Suite G, San Diego, CA 92120, USA

1.2. Description of Device (EUT)

Product Name	:	3-in-1 Magnetic Wireless Charging Stand	
Model No.	:	ST-WMCS3M, ST-WMCS3S (Note: All samples are the same except the model number & appearance, so we prepare "ST-WMCS3M" for test only.)	
Trade Mark	:	S A T E C H I	
Test Power Supply	:	AC 120V, 60Hz for adapter/AC 240V, 60Hz for adapter	
Test Sample No.	:	1-2-1(Normal Sample), 1-2-2(Engineering Sample)	
Product Description	:	Operation Frequency:	111KHz-205KHz for Phone&Airpods; 326.5KHz for Apple watch
		Modulation Type:	FSK
		Antenna Type:	Inductive loop coil Antenna
		Antenna Gain(Peak):	0 dBi
Remark: 1) For a more detailed features description, please refer to the manufacturer's specifications or the User's Manual.			

1.3. Auxiliary Equipment Used During Test

Adapter	:	M/N: A2013 Input: AC 100-240V, 0.7A, 50-60Hz Output: 3.6-5.5V---3A/ 6.5-9V---2A/ 9-12V---1.5A
Wireless charging load	:	Manufacturer: Shenzhen Ouju Technology Co., Ltd. M/N: CD2531 Power: 5W/7.5W/10W/15W Last Cal.: Oct. 26, 2020 Cal. Interval: 1 Year
Wireless charging load	:	Manufacturer: Shenzhen Ouju Technology Co., Ltd. M/N: CD2526 Power: 5W Last Cal.: Oct. 26, 2020 Cal. Interval: 1 Year
Apple Watch	:	M/N: WR-50M

1.4. Description of Test Modes

To investigate the maximum EMI emission characteristics generates from EUT, the test system was pre-scanning tested base on the consideration of following EUT operation mode or test configuration mode which possible have effect on EMI emission level. Each of these EUT operation mode(s) or test configuration mode(s) mentioned above was evaluated respectively.

Pretest Mode	Description
Mode 1	Wireless Charge Mode with 15W
Mode 2	Wireless Charge Mode with 5W
Mode 3	Wireless Charge Mode with watch
Mode 4	Wireless Charge Mode with 15W+5W
Mode 5	Wireless Charge Mode with 15W+watch
Mode 6	Wireless Charge Mode with 5W+watch
Mode 7	Full load Mode

For Conducted Emission	
Final Test Mode	Description
Mode 1	Wireless Charge Mode with 15W
Mode 2	Wireless Charge Mode with 5W
Mode 3	Wireless Charge Mode with watch

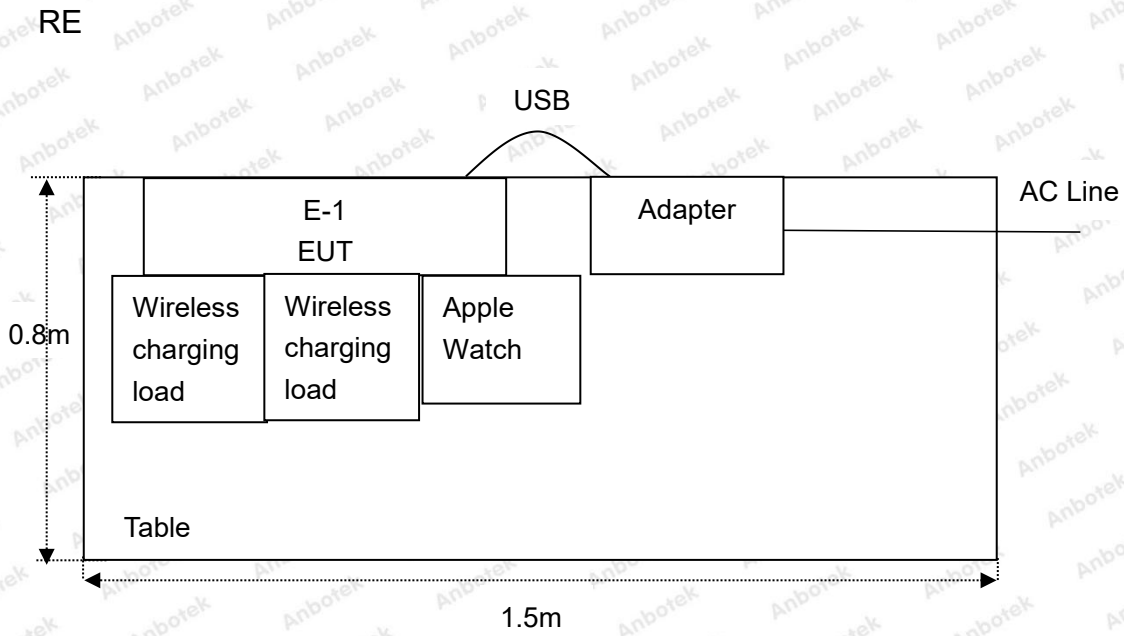
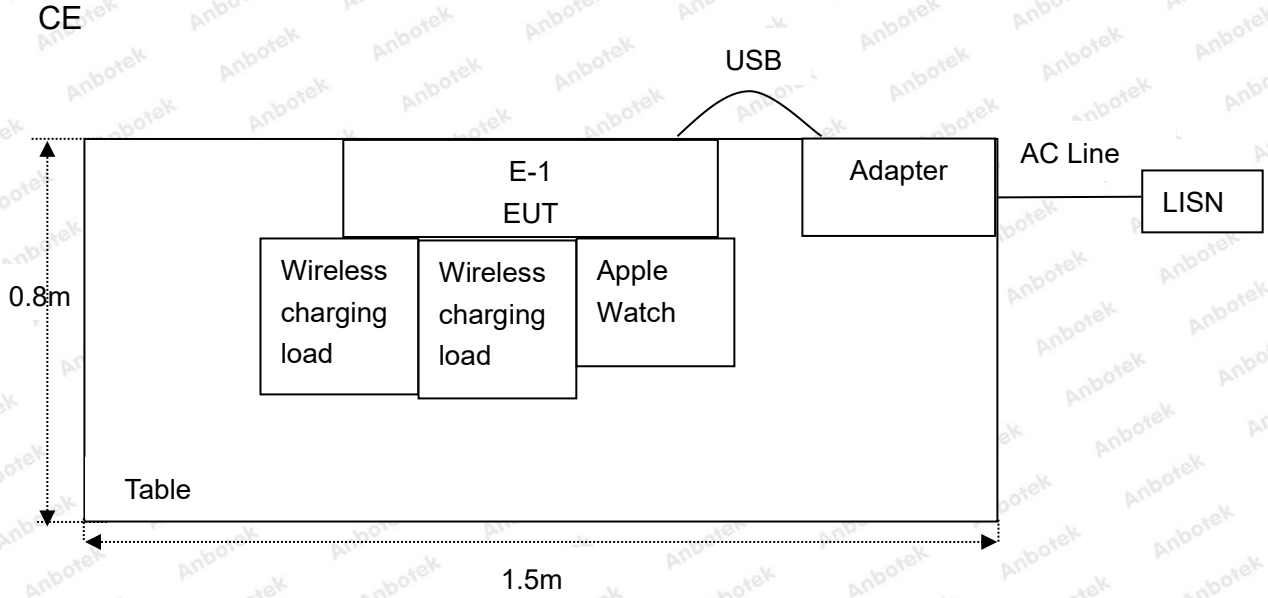
Mode 4	Wireless Charge Mode with 15W+5W
Mode 5	Wireless Charge Mode with 15W+watch
Mode 6	Wireless Charge Mode with 5W+watch
Mode 7	Full load Mode

For Radiated Emission	
Final Test Mode	Description
Mode 1	Wireless Charge Mode with 15W
Mode 2	Wireless Charge Mode with 5W
Mode 3	Wireless Charge Mode with watch
Mode 4	Wireless Charge Mode with 15W+5W
Mode 5	Wireless Charge Mode with 15W+watch
Mode 6	Wireless Charge Mode with 5W+watch
Mode 7	Full load Mode

Note: (1)Test channel is 0.1276MHz & 326.5KHz.

(2) All the situation(full load, half load and empty load) has been tested,only the worst situation (full load 25W) was recorded in the report.

1.5. Description Of Test Setup



1.6. Test Equipment List

Item	Equipment	Manufacturer	Model No.	Serial No.	Last Cal.	Cal. Interval
1.	L.I.S.N. Artificial Mains Network	Rohde & Schwarz	ENV216	100055	Oct. 26, 2020	1 Year
2.	EMI Test Receiver	Rohde & Schwarz	ESCI	100627	Oct. 26, 2020	1 Year
3.	RF Switching Unit	Compliance Direction	RSU-M2	38303	Oct. 26, 2020	1 Year
4.	Software Name EZ-EMC	Ferrari Technology	ANB-03A	N/A	N/A	N/A
5.	MAX Spectrum Analysis	Agilent	N9020A	MY51170037	Oct. 26, 2020	1 Year
6.	Preamplifier	SKET Electronic	BK1G18G30 D	KD17503	Oct. 26, 2020	1 Year
7.	Double Ridged Horn Antenna	Instruments corporation	GTH-0118	351600	Nov. 02, 2020	2 Year
8.	Bilog Broadband Antenna	Schwarzbeck	VULB9163	VULB 9163-289	Nov. 02, 2020	2 Year
9.	Loop Antenna	Schwarzbeck	FMZB1519B	00053	Nov. 02, 2020	2 Year
10.	Horn Antenna	A-INFO	LB-180400-K F	J211060628	Nov. 02, 2020	2 Year
11.	Pre-amplifier	SONOMA	310N	186860	Oct. 26, 2020	1 Year
12.	EMI Test Software EZ-EMC	SHURPLE	N/A	N/A	N/A	N/A
13.	RF Test Control System	YIHENG	YH3000	2017430	Oct. 26, 2020	1 Year
14.	Power Sensor	DAER	RPR3006W	15100041SN045	Oct. 26, 2020	1 Year
15.	Power Sensor	DAER	RPR3006W	15100041SN046	Oct. 26, 2020	1 Year
16.	MXA Spectrum Analysis	Agilent	N9020A	MY51170037	Oct. 26, 2020	1 Year
17.	MXG RF Vector Signal Generator	Agilent	N5182A	MY48180656	Oct. 26, 2020	1 Year
18.	Signal Generator	Agilent	E4421B	MY41000743	Oct. 26, 2020	1 Year
19.	DC Power Supply	IVYTECH	IV3605	1804D360510	Oct. 26, 2020	1 Year
20.	Constant Temperature Humidity Chamber	ZHONGJIAN	ZJ-KHWS80 B	N/A	Oct. 26, 2020	1 Year

1.7. Measurement Uncertainty

Radiation Uncertainty	:	Ur = 3.9 dB (Horizontal)
		Ur = 3.8 dB (Vertical)
Conduction Uncertainty	:	Uc = 3.4 dB

1.8. Description of Test Facility

The test facility is recognized, certified, or accredited by the following organizations:

FCC-Registration No.: 184111

Shenzhen Anbotek Compliance Laboratory Limited, EMC Laboratory has been registered and fully described in a report filed with the (FCC) Federal Communications Commission. The acceptance letter from the FCC is maintained in our files. Registration No. 184111, September 30, 2020.

ISED-Registration No.: 8058A

Shenzhen Anbotek Compliance Laboratory Limited, EMC Laboratory has been registered and fully described in a report filed with the (ISED) Innovation, Science and Economic Development Canada. The acceptance letter from the ISED is maintained in our files. Registration 8058A, September 30, 2020.

Test Location

Shenzhen Anbotek Compliance Laboratory Limited.

1/F, Building D, Sogood Science and Technology Park, Sanwei community, Hangcheng Street, Bao'an District, Shenzhen, Guangdong, China.518102

2. Summary of Test Results

Standard Section	Test Item	Result
FCC Part 15, Paragraph 15.207	Conducted Emission Test	PASS
FCC Part 15, Paragraph 15.209(a)(f)	Spurious Emission	PASS
Part 15.203	Antenna Requirement	PASS

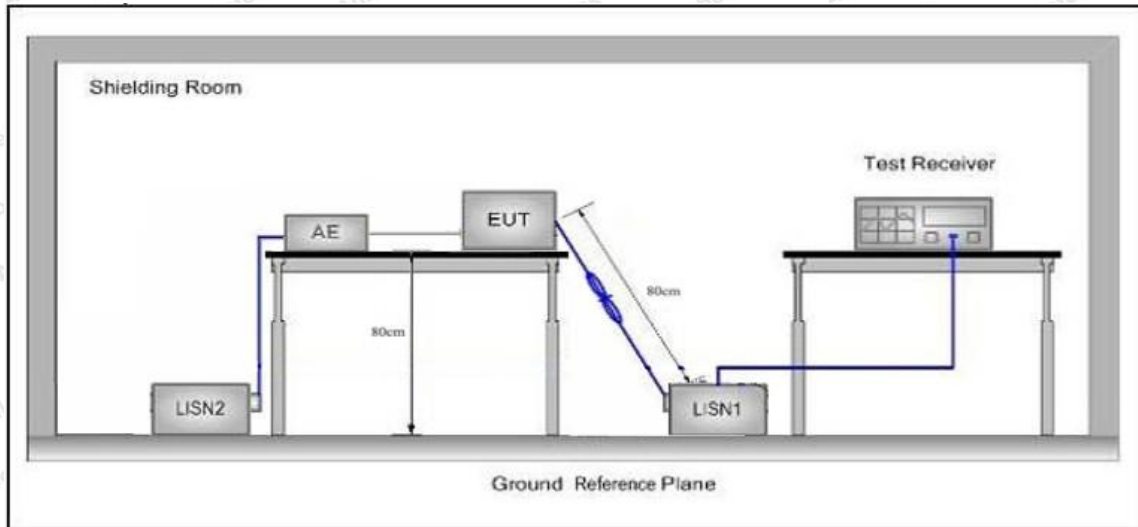
3. Conducted Emission Test

3.1. Test Standard and Limit

Test Standard	FCC Part15 Section 15.207		
Test Limit	Frequency	Maximum RF Line Voltage (dBuV)	
		Quasi-peak Level	Average Level
	150kHz~500kHz	66 ~ 56 *	56 ~ 46 *
	500kHz~5MHz	56	46
5MHz~30MHz	60	50	

Remark: (1) *Decreasing linearly with logarithm of the frequency.
 (2) The lower limit shall apply at the transition frequency.

3.2. Test Setup



3.3. Test Procedure

The EUT system is connected to the power mains through a line impedance stabilization network (L.I.S.N.). This provides a 50ohm coupling impedance for the EUT system. Please refer the block diagram of the test setup and photographs. Both sides of AC line are checked to find out the maximum conducted emission. In order to find the maximum emission levels, the relative positions of equipment and all of the interface cables shall be changed according to FCC ANSI C63.10-2020 on Conducted Emission Measurement.

The bandwidth of test receiver (ESCI) set at 9kHz.

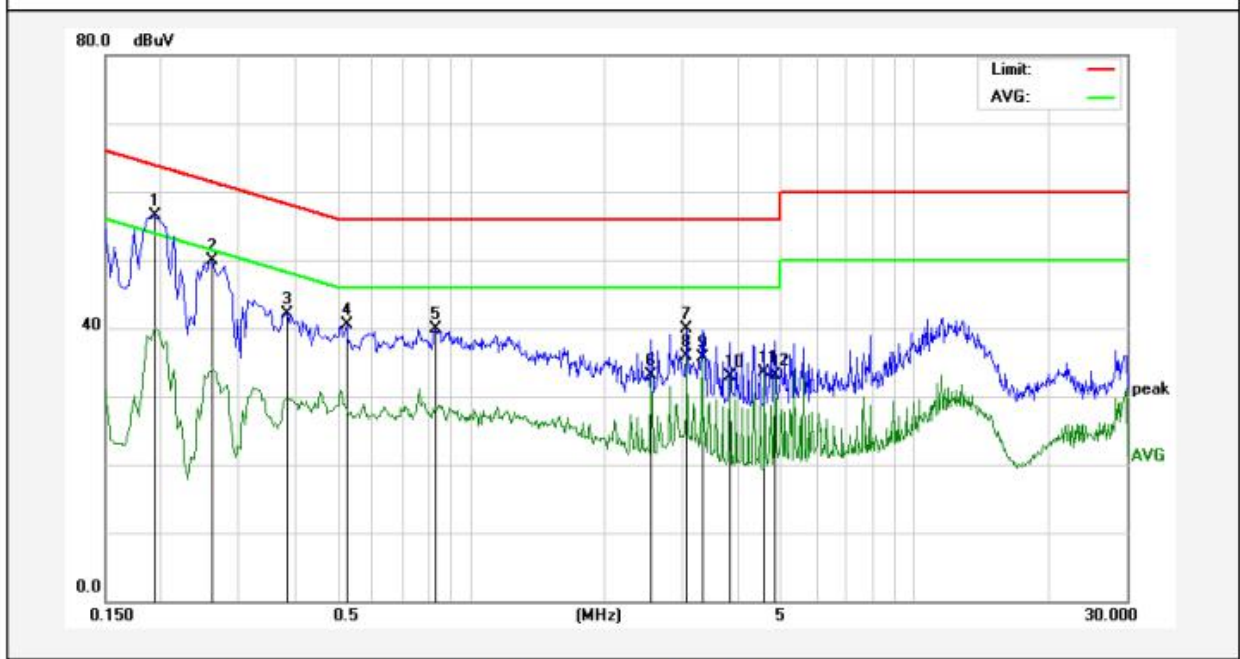
The frequency range from 150kHz to 30MHz is checked.

3.4. Test Data

Please to see the following pages

Conducted Emission Test Data

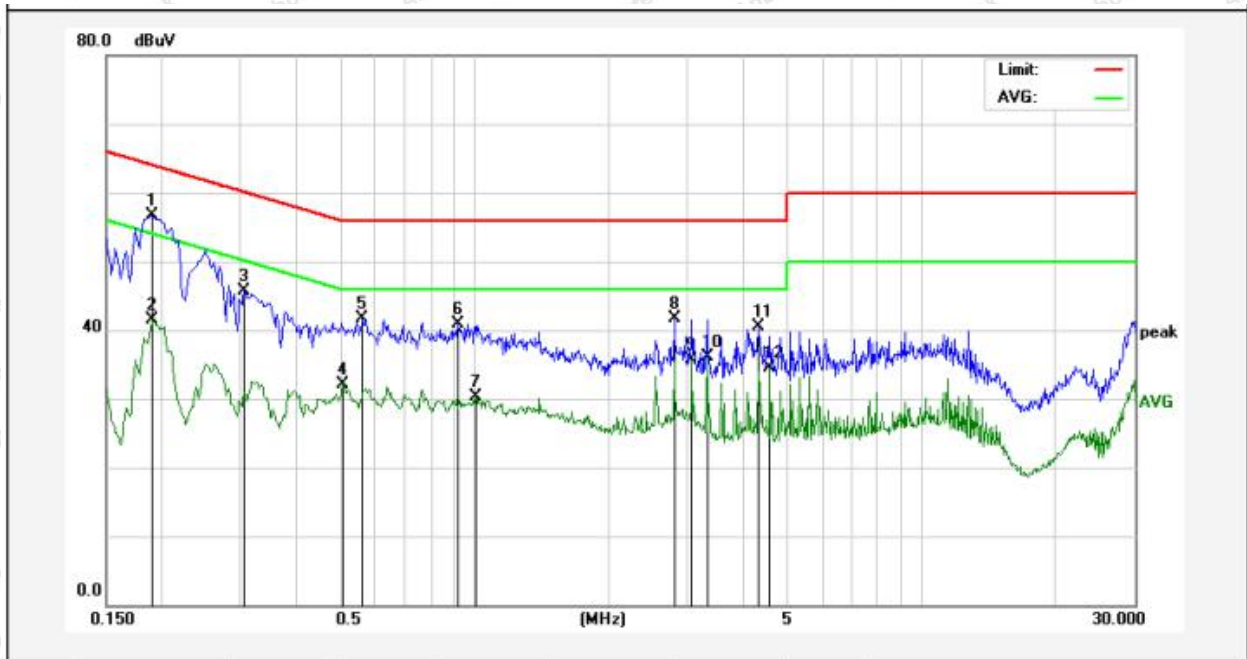
Test Site: 1# Shielded Room
 Operating Condition: Mode 7
 Test Specification: AC 240V, 60Hz for adapter
 Comment: Live Line
 Tem.: 24.1°C Hum.: 48%



No.	Freq. (MHz)	Reading (dBuV)	Factor (dB)	Result (dBuV)	Limit (dBuV)	Over Limit (dB)	Detector	Remark
1	0.1940	46.43	9.98	56.41	63.86	-7.45	QP	
2	0.2620	39.81	10.09	49.90	61.36	-11.46	QP	
3	0.3860	31.86	10.16	42.02	58.15	-16.13	QP	
4	0.5260	30.20	10.23	40.43	56.00	-15.57	QP	
5	0.8340	29.57	10.24	39.81	56.00	-16.19	QP	
6	2.5500	22.90	10.29	33.19	46.00	-12.81	AVG	
7	3.0579	29.60	10.32	39.92	56.00	-16.08	QP	
8	3.0579	25.52	10.32	35.84	46.00	-10.16	AVG	
9	3.3140	25.49	10.30	35.79	46.00	-10.21	AVG	
10	3.8260	22.59	10.25	32.84	46.00	-13.16	AVG	
11	4.5900	23.43	10.17	33.60	46.00	-12.40	AVG	
12	4.8460	22.88	10.14	33.02	46.00	-12.98	AVG	

Conducted Emission Test Data

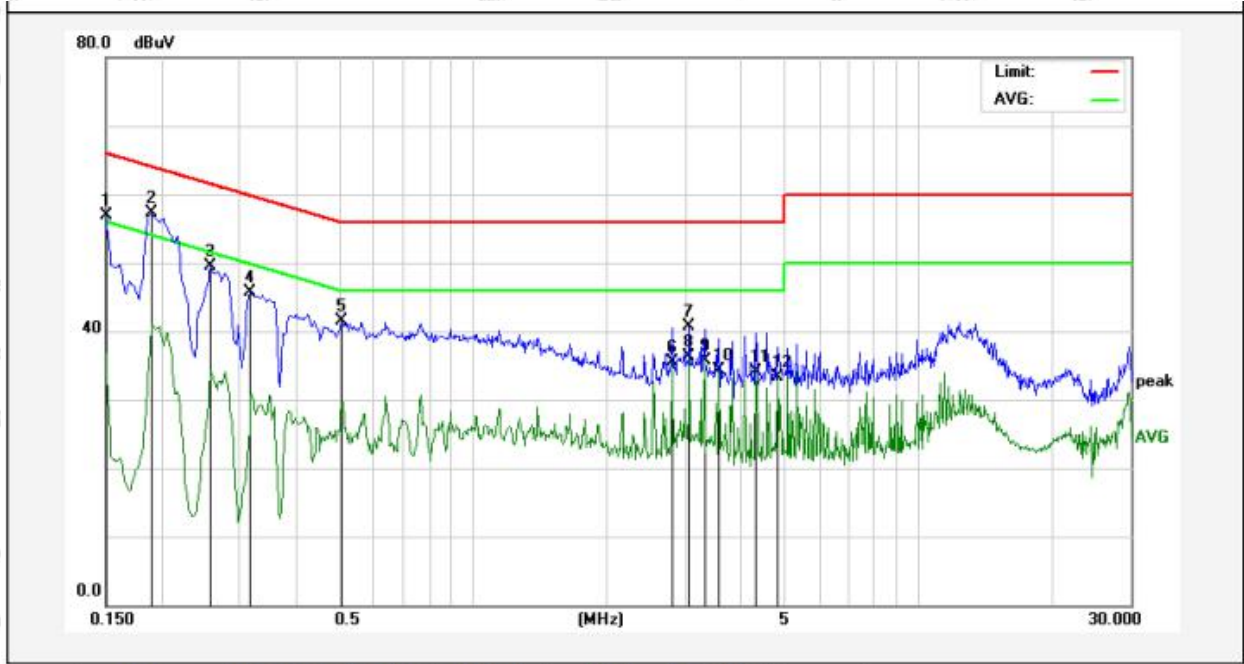
Test Site: 1# Shielded Room
 Operating Condition: Mode 7
 Test Specification: AC 240V, 60Hz for adapter
 Comment: Neutral Line
 Tem.: 24.1°C Hum.: 48%



No.	Freq. (MHz)	Reading (dBuV)	Factor (dB)	Result (dBuV)	Limit (dBuV)	Over Limit (dB)	Detector	Remark
1	0.1900	46.71	10.02	56.73	64.03	-7.30	QP	
2	0.1900	31.43	10.02	41.45	54.03	-12.58	AVG	
3	0.3060	35.66	10.12	45.78	60.08	-14.30	QP	
4	0.5100	21.91	10.28	32.19	46.00	-13.81	AVG	
5	0.5620	31.33	10.28	41.61	56.00	-14.39	QP	
6	0.9220	30.65	10.23	40.88	56.00	-15.12	QP	
7	1.0100	20.13	10.23	30.36	46.00	-15.64	AVG	
8	2.8060	31.60	10.16	41.76	56.00	-14.24	QP	
9	3.0579	25.63	10.16	35.79	46.00	-10.21	AVG	
10	3.3140	26.00	10.16	36.16	46.00	-9.84	AVG	
11	4.3340	30.29	10.13	40.42	56.00	-15.58	QP	
12	4.5900	24.35	10.13	34.48	46.00	-11.52	AVG	

Conducted Emission Test Data

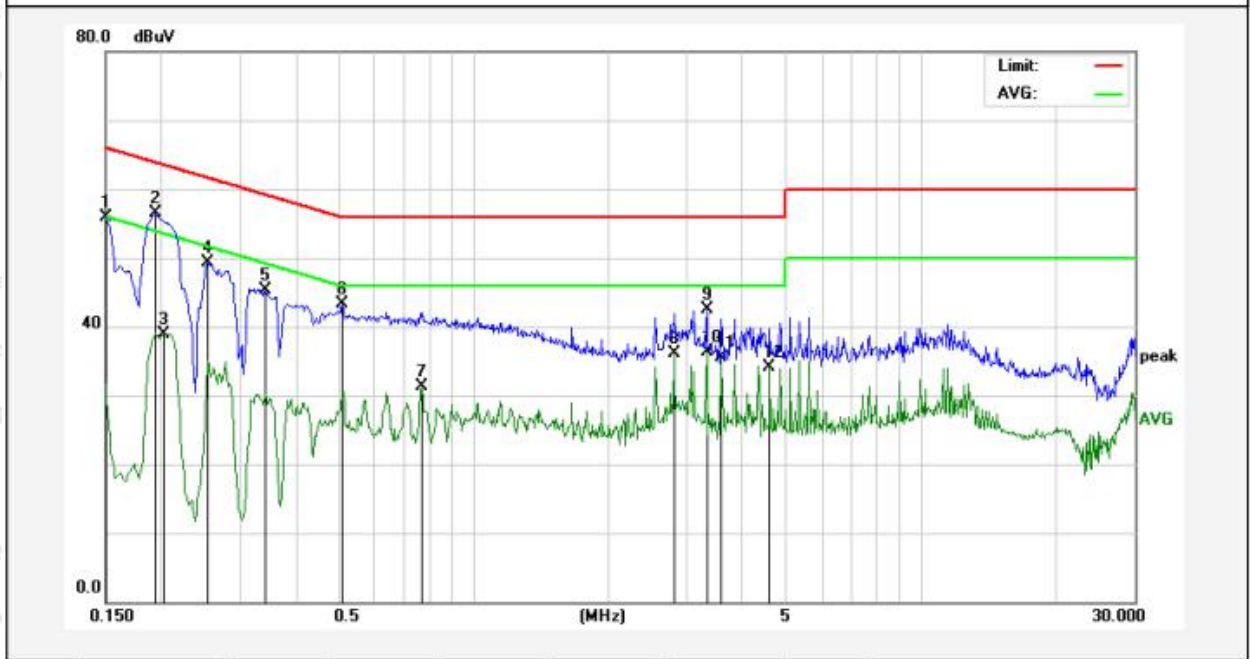
Test Site: 1# Shielded Room
 Operating Condition: Mode 7
 Test Specification: AC 120V, 60Hz for adapter
 Comment: Live Line
 Tem.: 24.1°C Hum.: 48%



No.	Freq. (MHz)	Reading (dBuV)	Factor (dB)	Result (dBuV)	Limit (dBuV)	Over Limit (dB)	Detector	Remark
1	0.1500	46.94	10.00	56.94	65.99	-9.05	QP	
2	0.1900	47.33	9.99	57.32	64.03	-6.71	QP	
3	0.2580	39.39	10.09	49.48	61.49	-12.01	QP	
4	0.3180	35.56	10.17	45.73	59.76	-14.03	QP	
5	0.5100	31.34	10.23	41.57	56.00	-14.43	QP	
6	2.8060	25.13	10.31	35.44	46.00	-10.56	AVG	
7	3.0620	30.31	10.32	40.63	56.00	-15.37	QP	
8	3.0620	26.06	10.32	36.38	46.00	-9.62	AVG	
9	3.3140	25.43	10.30	35.73	46.00	-10.27	AVG	
10	3.5700	24.07	10.28	34.35	46.00	-11.65	AVG	
11	4.3340	23.82	10.19	34.01	46.00	-11.99	AVG	
12	4.8460	23.10	10.14	33.24	46.00	-12.76	AVG	

Conducted Emission Test Data

Test Site: 1# Shielded Room
 Operating Condition: Mode 7
 Test Specification: AC 120V, 60Hz for adapter
 Comment: Neutral Line
 Tem.: 24.1°C Hum.: 48%



No.	Freq. (MHz)	Reading (dBuV)	Factor (dB)	Result (dBuV)	Limit (dBuV)	Over Limit (dB)	Detector	Remark
1	0.1500	45.97	9.98	55.95	65.99	-10.04	QP	
2	0.1940	46.52	10.03	56.55	63.86	-7.31	QP	
3	0.2020	28.92	10.03	38.95	53.52	-14.57	AVG	
4	0.2540	39.29	10.06	49.35	61.62	-12.27	QP	
5	0.3420	35.15	10.11	45.26	59.15	-13.89	QP	
6	0.5100	33.07	10.28	43.35	56.00	-12.65	QP	
7	0.7660	21.11	10.23	31.34	46.00	-14.66	AVG	
8	2.8060	25.96	10.16	36.12	46.00	-9.88	AVG	
9	3.3140	32.37	10.16	42.53	56.00	-13.47	QP	
10	3.3140	26.10	10.16	36.26	46.00	-9.74	AVG	
11	3.5700	25.41	10.15	35.56	46.00	-10.44	AVG	
12	4.5900	24.05	10.13	34.18	46.00	-11.82	AVG	

4. Radiation Spurious Emission

4.1. Test Standard and Limit

Test Standard	FCC Part15 C Section 15.209 and 15.205				
Test Limit	Frequency (MHz)	Field strength (microvolt/meter)	Limit (dBuV/m)	Remark	Measurement distance (m)
	0.009MHz~0.490MHz	2400/F(kHz)	-	-	300
	0.490MHz-1.705MHz	24000/F(kHz)	-	-	30
	1.705MHz-30MHz	30	-	-	30
	30MHz~88MHz	100	40.0	Quasi-peak	3
	88MHz~216MHz	150	43.5	Quasi-peak	3
	216MHz~960MHz	200	46.0	Quasi-peak	3
	960MHz~1000MHz	500	54.0	Quasi-peak	3
	Above 1000MHz	500	54.0	Average	3
-		74.0	Peak	3	

Remark:

- (1)The lower limit shall apply at the transition frequency.
- (2) 15.35(b), Unless otherwise specified, the limit on peak radio frequency emissions is 20dB above the maximum permitted average emission limit applicable to the equipment under test. This peak limit applies to the total peak emission level radiated by the device.

4.2. Test Setup

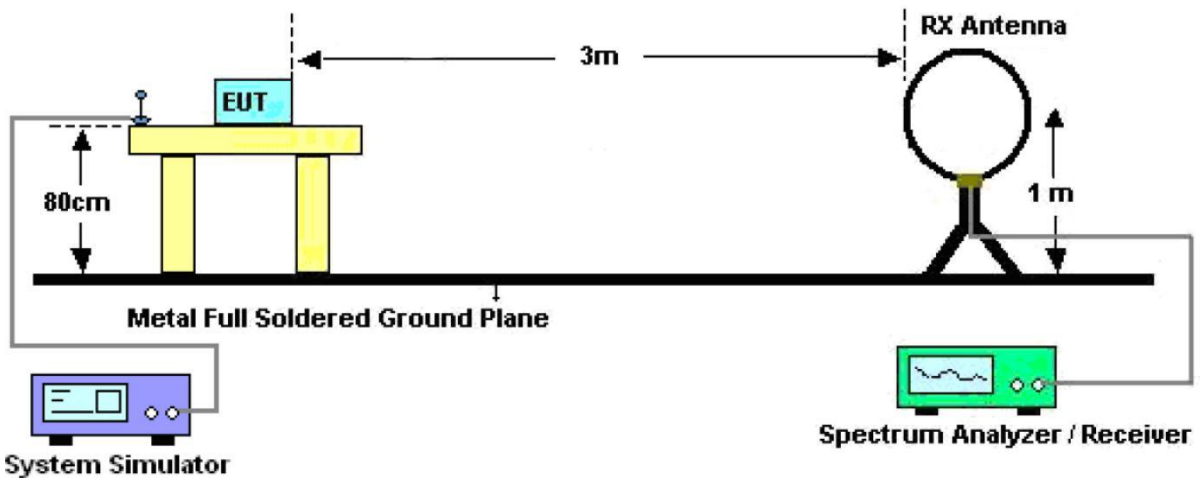


Figure 1. Below 30MHz

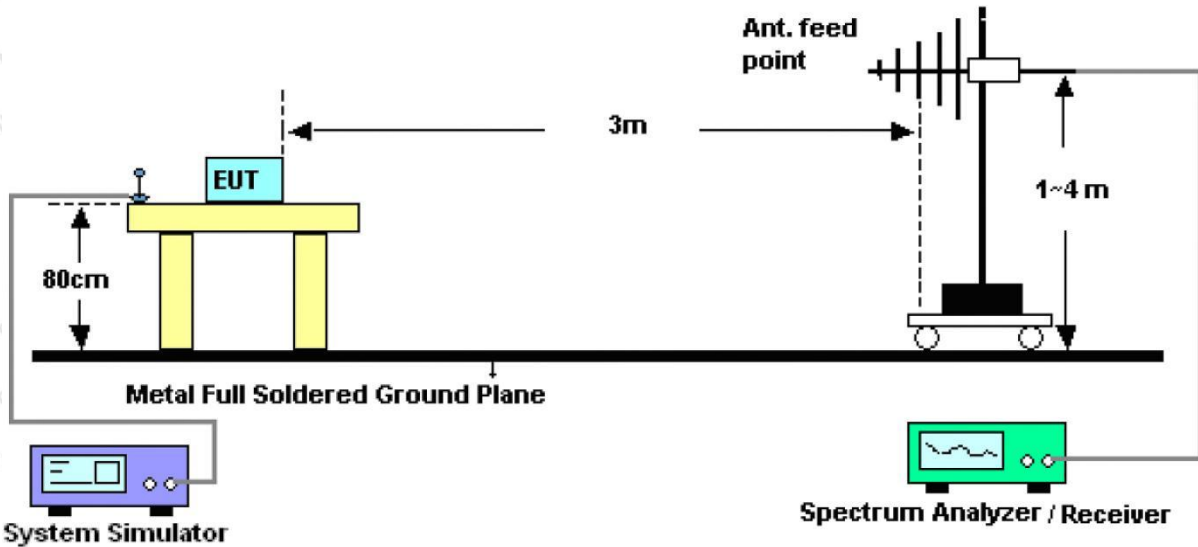


Figure 2. 30MHz to 1GHz

4.3. Test Procedure

For below 1GHz: The EUT is placed on a turntable, which is 0.8m above the ground plane. The turn table can rotate 360 degrees to determine the position of the maximum emission level. The EUT is set 3 meters away from the receiving antenna which is mounted on a antenna tower. The antenna can be moved up and down from 1 to 4 meters to find out the maximum emission level. Rotated the EUT through three orthogonal axes to determine the maximum emissions, both horizontal and vertical polarization of the antenna are set on test. The EUT is tested in 9*6*6 Chamber. The device is evaluated in xyz orientation.

For 9kHz to 150kHz, Set the spectrum analyzer as:

RBW = 200Hz, VBW = 1kHz, Detector= Quasi-Peak, Trace mode= Max hold, Sweep- auto couple.

For 150kHz to 30MHz, Set the spectrum analyzer as:

RBW = 9kHz, VBW = 30kHz, Detector= Quasi-Peak, Trace mode= Max hold, Sweep- auto couple.

For 30MHz to 1000MHz, Set the spectrum analyzer as:

RBW = 100kHz, VBW = 300kHz, Detector= Quasi-Peak, Trace mode= Max hold, Sweep- auto couple.

4.4. Test Data

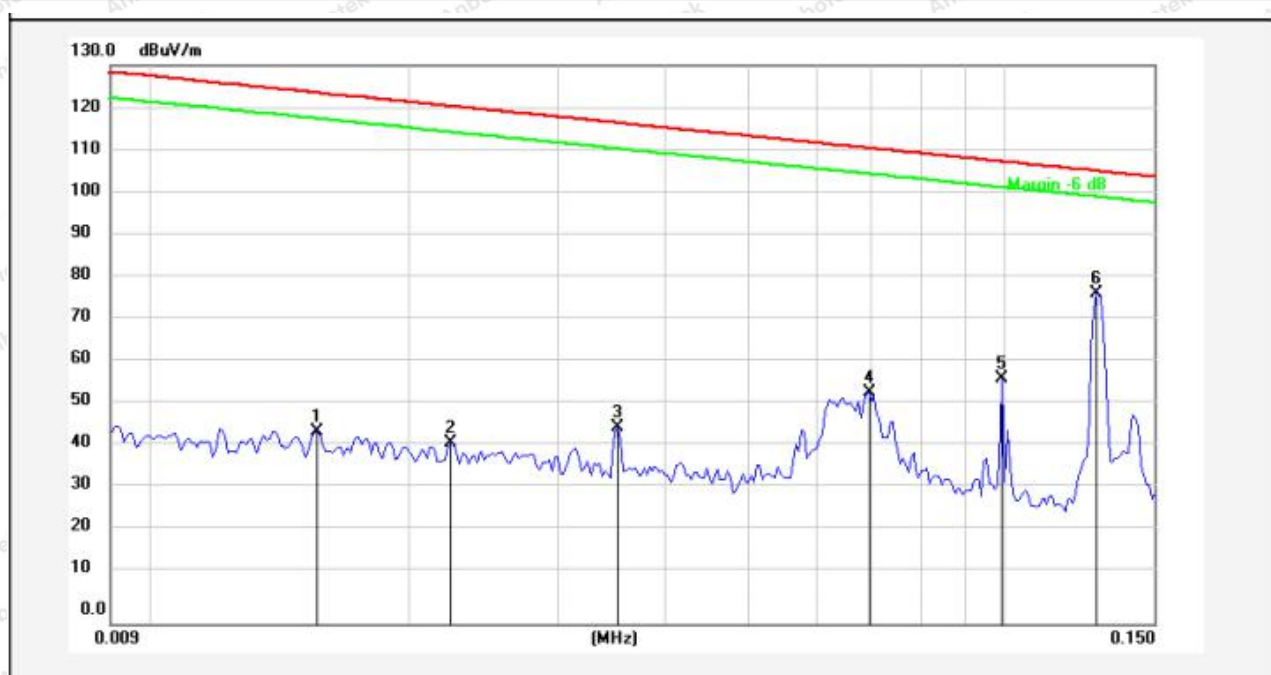
PASS

Note: The data is in TX mode, and this is the worst mode.

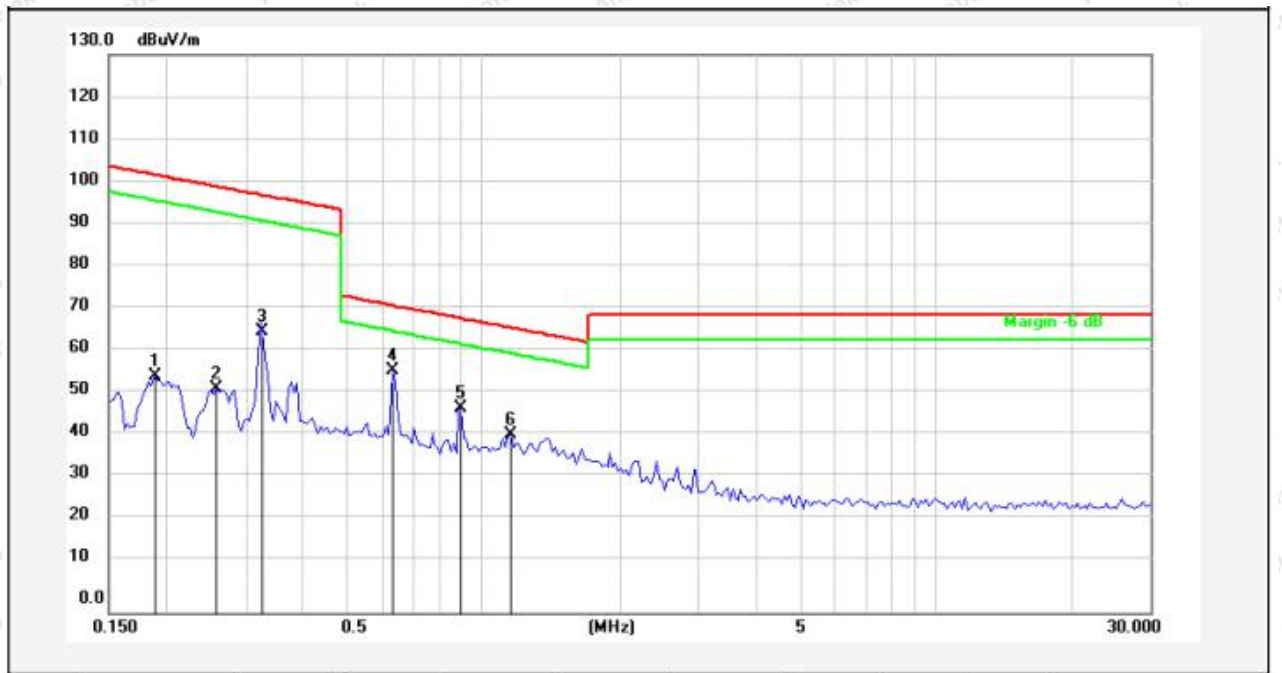
Test Results

(Between 9KHz – 30MHz)

Standard: FCC PART15 C _3m **Power Source:** AC 120V, 60Hz for adapter
Test item: Radiation Test **Temp.(C)/Hum.(%RH):** 22.4°C/49%RH
Test Mode: Mode 7 **Distance:** 3m



No.	Freq. (MHz)	Reading (dBuV)	Factor ()	Result (dBuV/m)	Limit (dBuV/m)	Over Limit (dB)	Detector	Height (cm)	degree (deg)	Remark
1	0.0157	24.29	20.30	44.59	123.59	-79.00	peak			
2	0.0225	21.81	20.35	42.16	120.47	-78.31	peak			
3	0.0352	25.11	20.48	45.59	116.60	-71.01	peak			
4	0.0692	33.39	20.37	53.76	110.75	-56.99	peak			
5	0.0991	36.87	20.29	57.16	107.64	-50.48	peak			
6	0.1276	56.52	20.34	76.86	105.45	-28.59	peak			

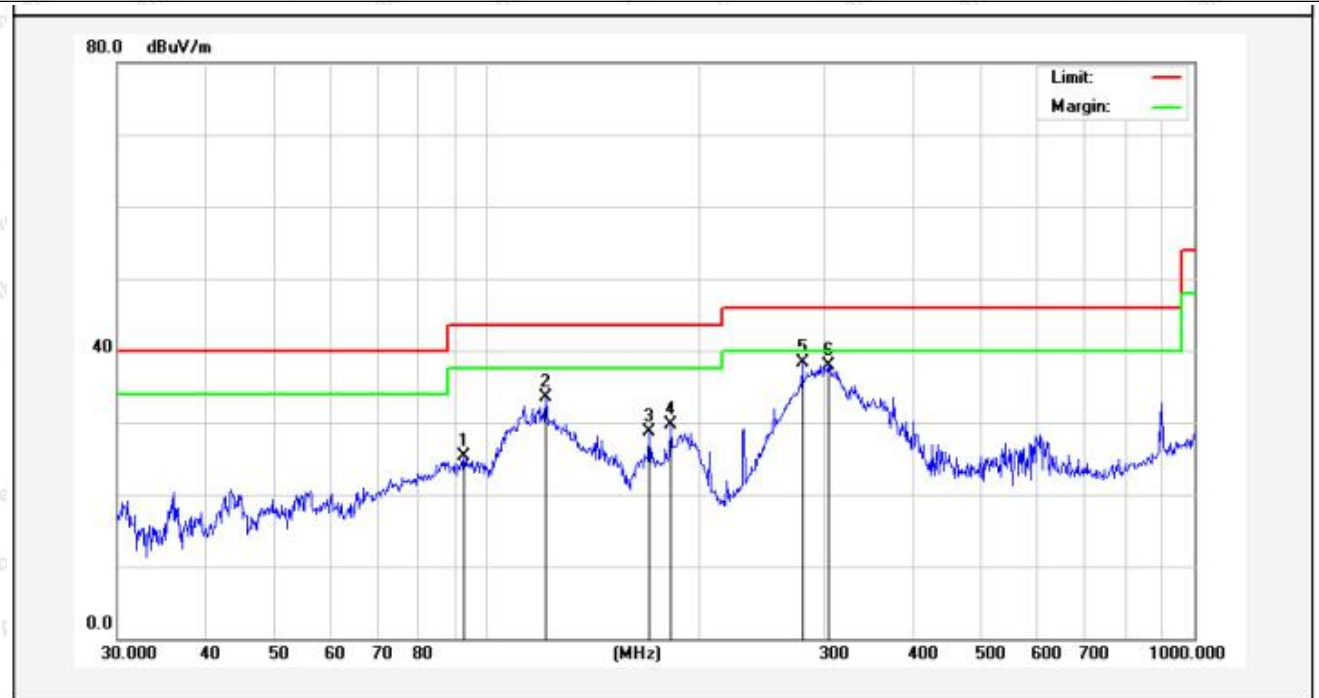


No.	Freq. (MHz)	Reading (dBuV)	Factor ()	Result (dBuV/m)	Limit (dBuV/m)	Over Limit (dB)	Detector	Height (cm)	degree (deg)	Remark
1	0.1905	34.91	20.32	55.23	101.96	-46.73	peak			
2	0.2584	31.84	20.30	52.14	99.32	-47.18	peak			
3	0.3265	45.07	20.29	65.36	97.30	-31.94	peak			
4	0.6378	36.19	20.27	56.46	71.52	-15.06	peak			
5	0.9008	27.26	20.26	47.52	68.53	-21.01	peak			
6	1.1592	21.14	20.26	41.40	66.34	-24.94	peak			

Remark: According to FCC PART 15.209 (d), the emission limits for the frequency bands 9–90 kHz, 110–490 kHz and above 1000 MHz, Radiated emission limits in these three bands are based on measurements employing an average detector.

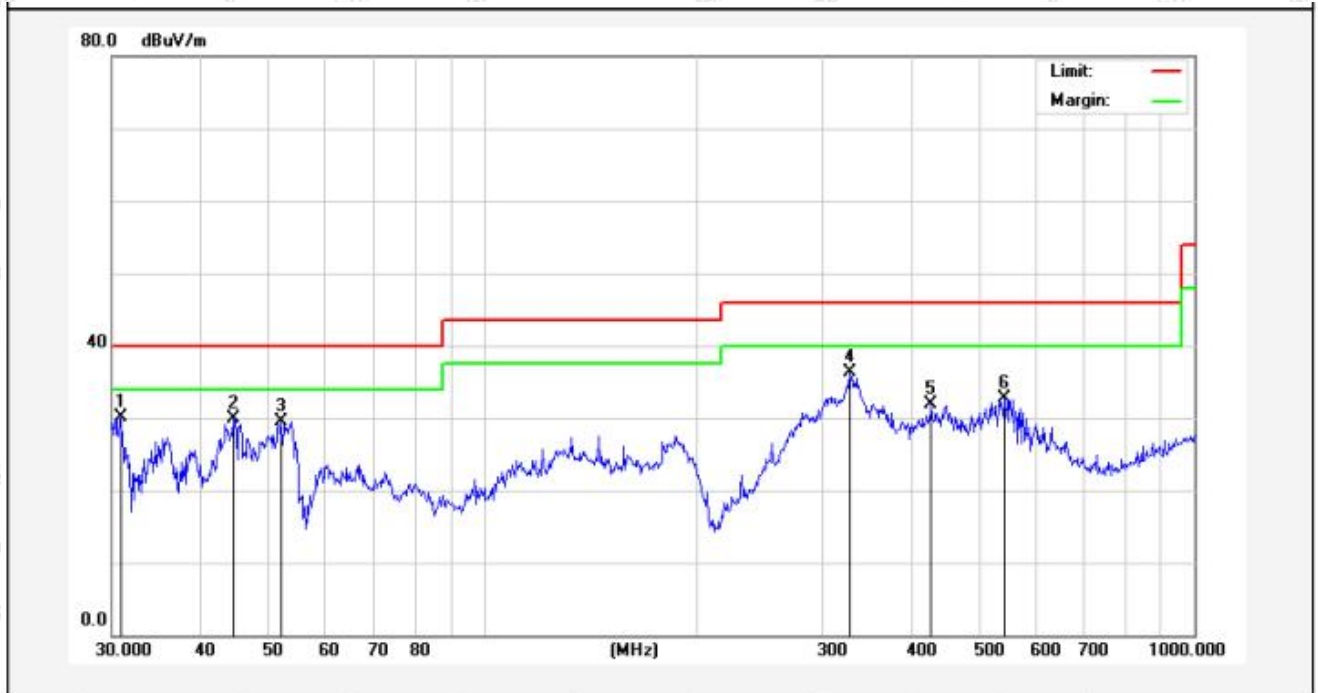
(Between 30MHz –1000 MHz)

Standard:	FCC PART15 C _3m	Polarization:	Horizontal
Test item:	Radiation Test	Power Source:	AC 120V, 60Hz for adapter
Test Mode:	Mode 7	Temp.(C)/Hum.(%RH):	23.4°C/50%RH
Distance:	3m		



No.	Freq. (MHz)	Reading (dBuV)	Factor (dB/m)	Result (dBuV/m)	Limit (dBuV/m)	Over Limit (dB)	Detector	Height (cm)	degree (deg)	Remark
1	92.7871	45.56	-20.22	25.34	43.50	-18.16	peak			
2	121.1231	55.27	-21.77	33.50	43.50	-10.00	peak			
3	169.5990	50.07	-21.34	28.73	43.50	-14.77	peak			
4	181.9202	50.44	-20.73	29.71	43.50	-13.79	peak			
5	279.0436	54.43	-16.20	38.23	46.00	-7.77	peak			
6	303.5437	52.21	-14.21	38.00	46.00	-8.00	peak			

Standard: FCC PART15 C _3m **Polarization:** Vertical
Test item: Radiation Test **Power Source:** AC 120V, 60Hz for adapter
Test Mode: Mode 7 **Temp.(C)/Hum.(%RH):** 23.4°C/50%RH
Distance: 3m



No.	Freq. (MHz)	Reading (dBuV)	Factor (dB/m)	Result (dBuV/m)	Limit (dBuV/m)	Over Limit (dB)	Detector	Height (cm)	degree (deg)	Remark
1	30.8535	47.07	-17.04	30.03	40.00	-9.97	peak			
2	44.4308	43.96	-14.04	29.92	40.00	-10.08	peak			
3	52.0251	45.06	-15.53	29.53	40.00	-10.47	peak			
4	327.8873	48.85	-12.61	36.24	46.00	-9.76	peak			
5	426.5210	42.71	-10.73	31.98	46.00	-14.02	peak			
6	541.3725	40.90	-8.12	32.78	46.00	-13.22	peak			

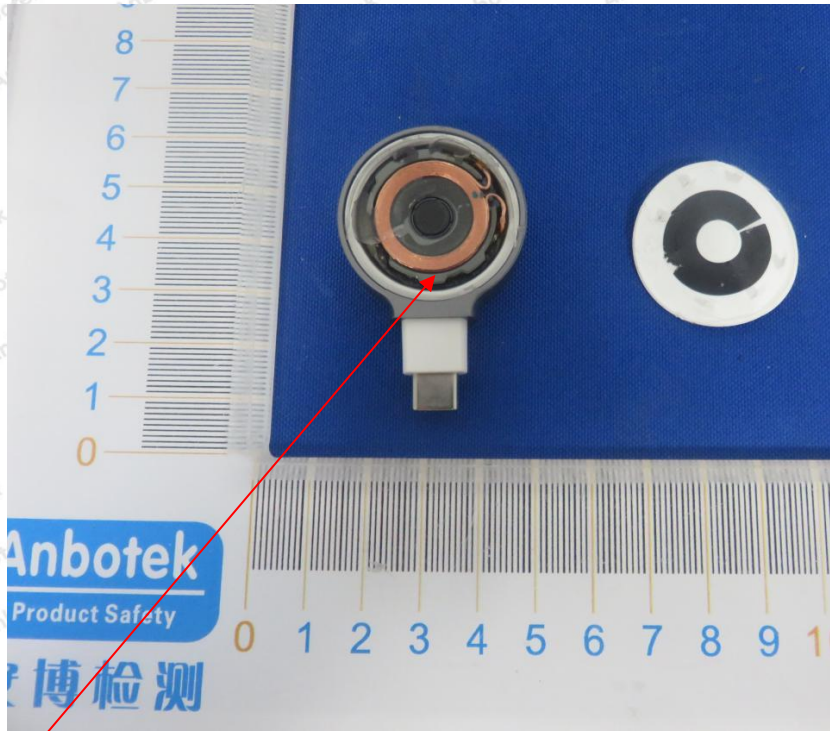
5. Antenna Requirement

5.1. Test Standard and Requirement

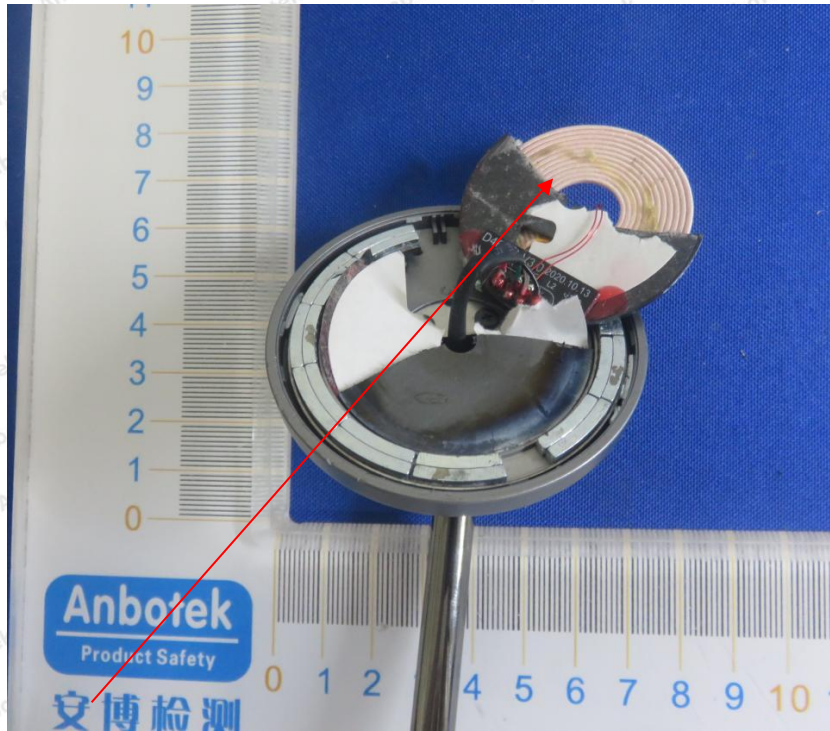
Test Standard	FCC Part15 Section 15.203
Requirement	An intentional radiator shall be designed to ensure that no antenna other than that furnished by the responsible party shall be used with the device. The use of a permanently attached antenna or of an antenna that uses a unique coupling to the intentional radiator, the manufacturer may design the unit so that a broken antenna can be replaced by the user, but the use of a standard antenna jack or electrical connector is prohibited.

5.2. Antenna Connected Construction

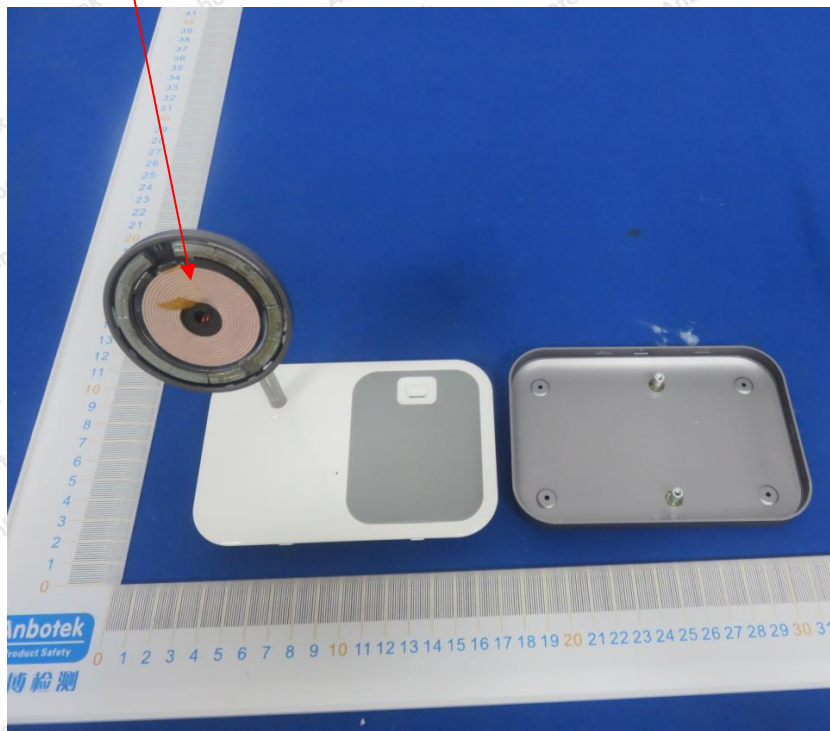
The antenna is a Inductive loop coil Antenna which permanently attached, and the best case gain of the antenna is 0 dBi. It complies with the standard requirement.



Antenna



Antenna



APPENDIX I -- TEST SETUP PHOTOGRAPH

Photo of Conducted Emission Measurement

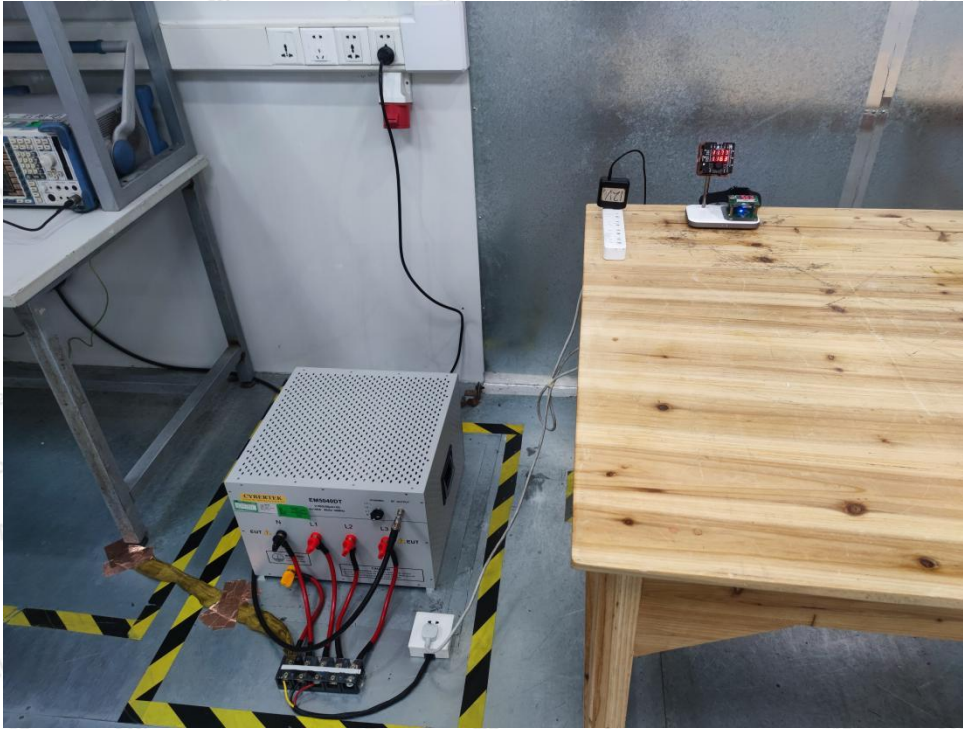
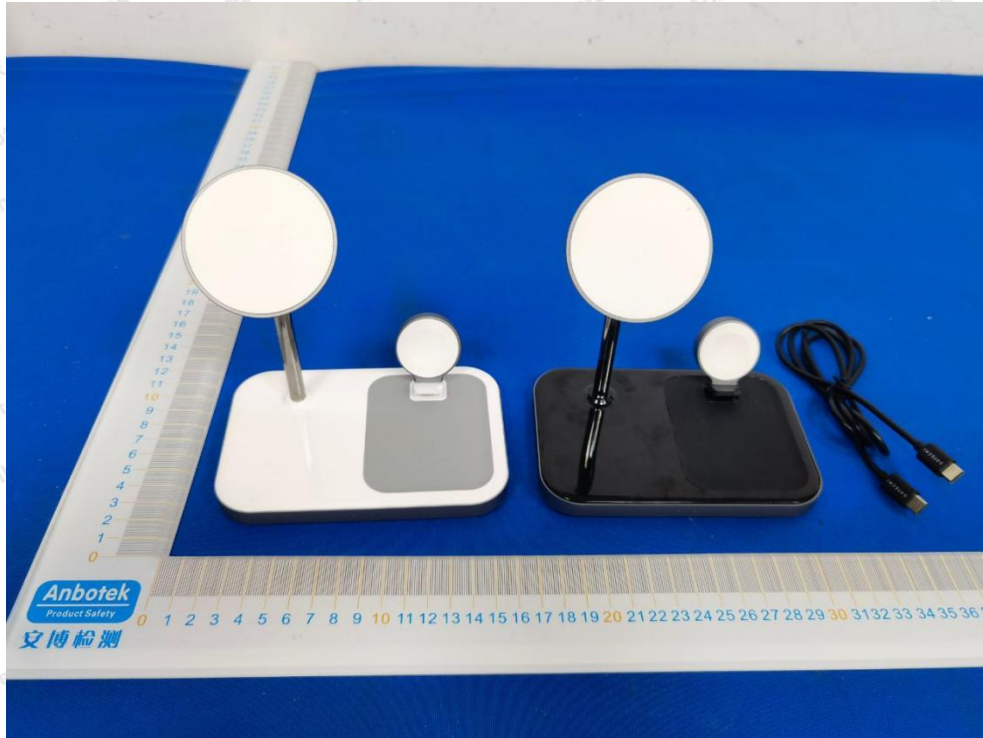


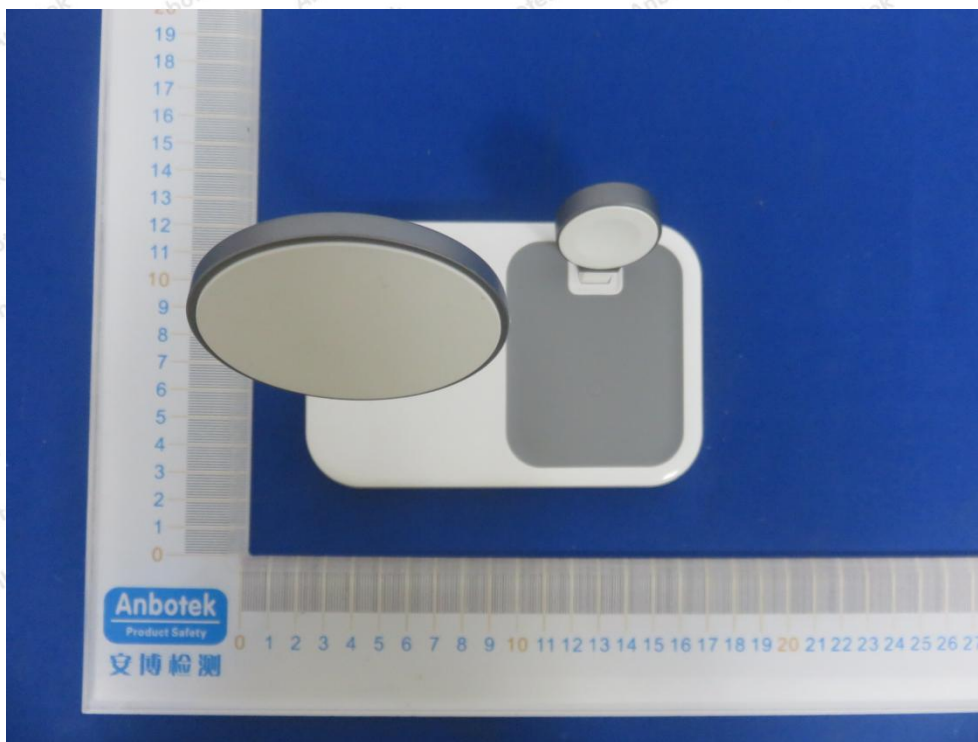
Photo of Radiation Emission Test

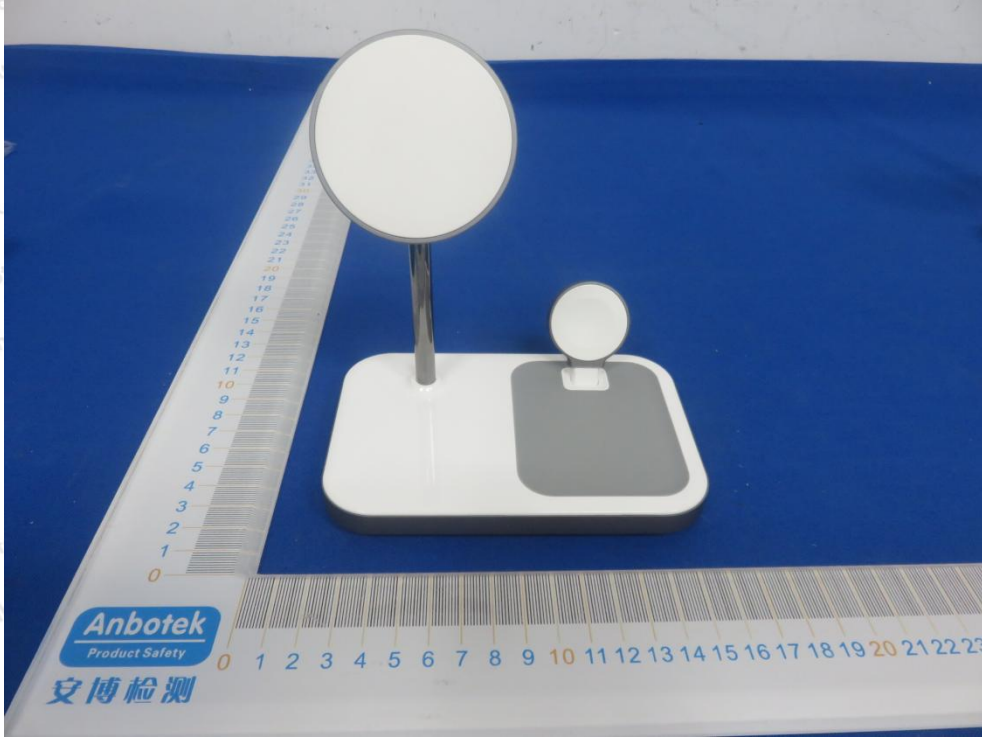




APPENDIX II -- EXTERNAL PHOTOGRAPH

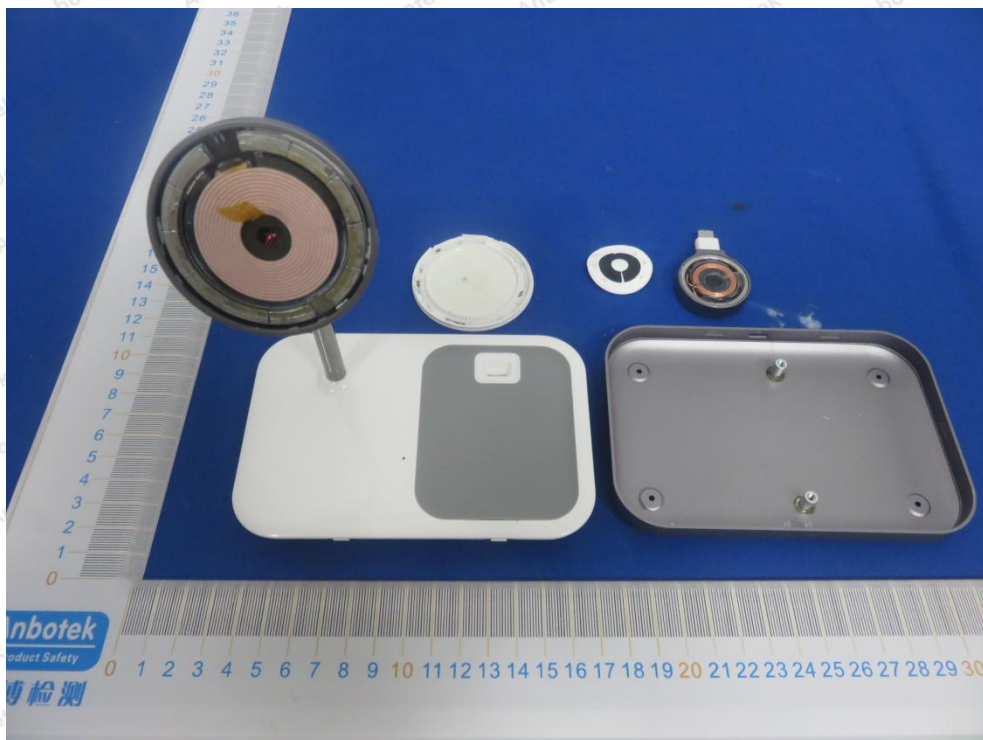
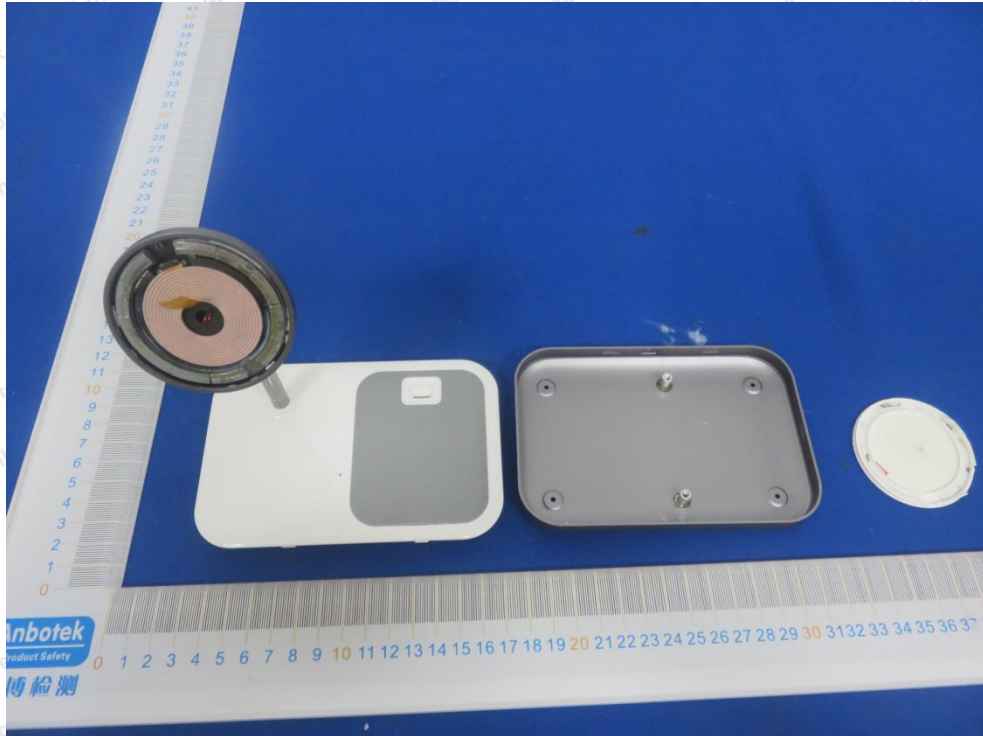


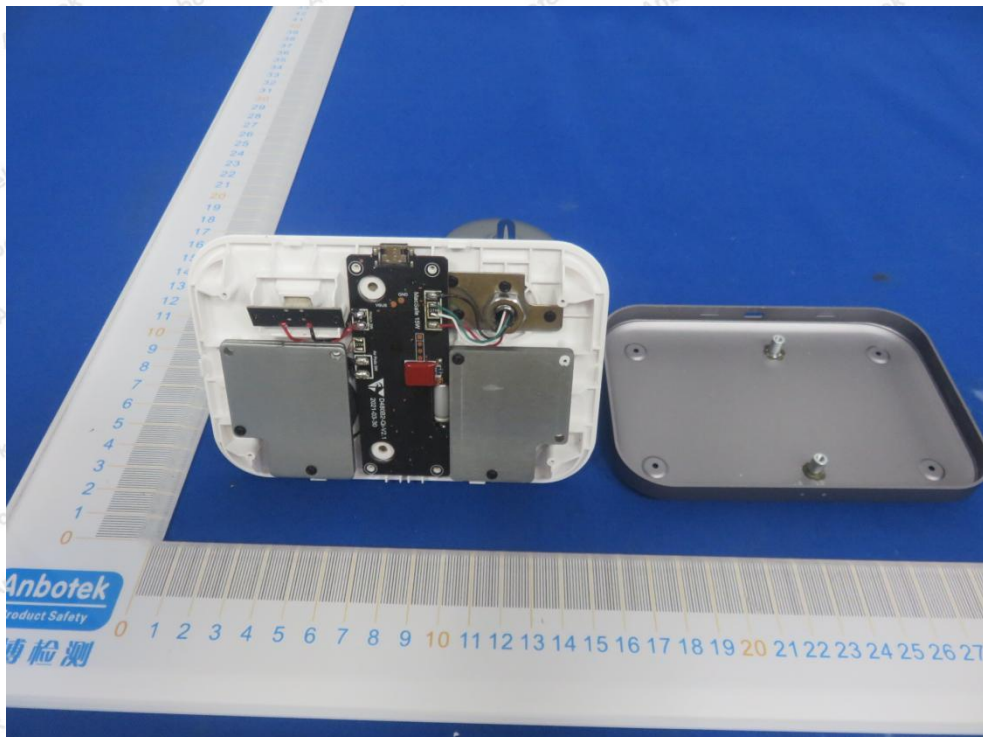
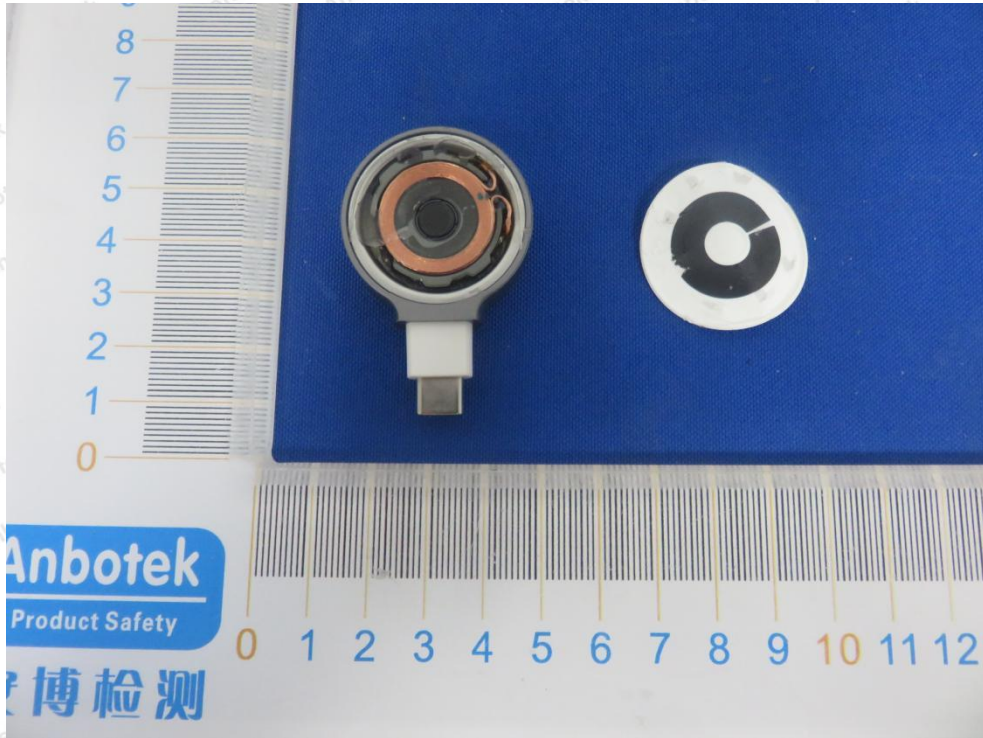


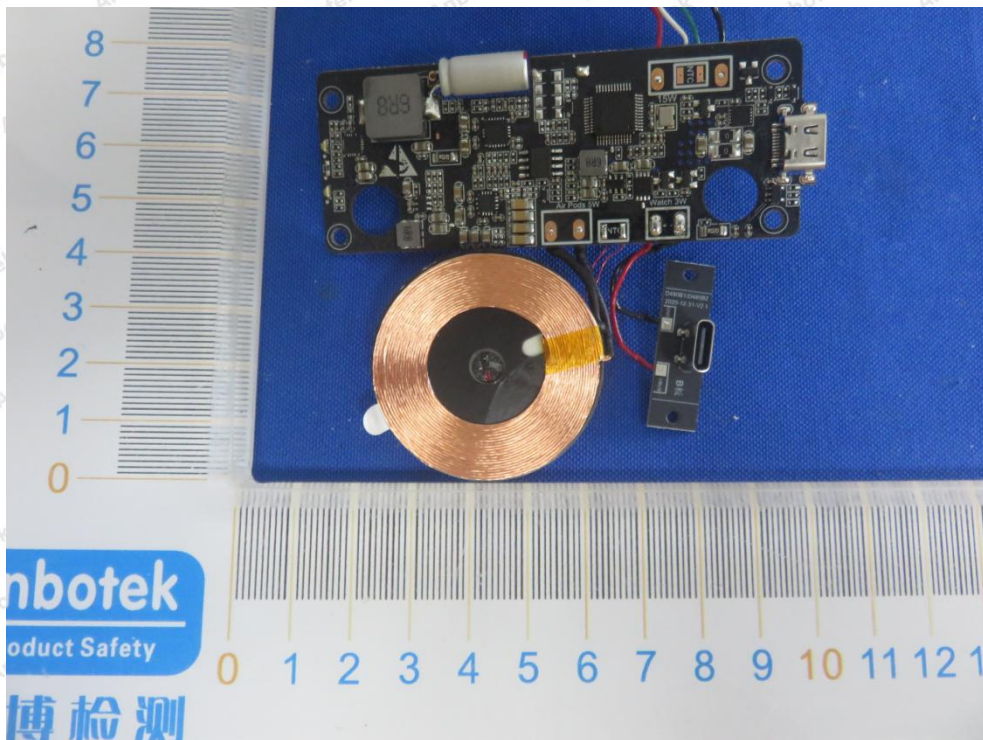
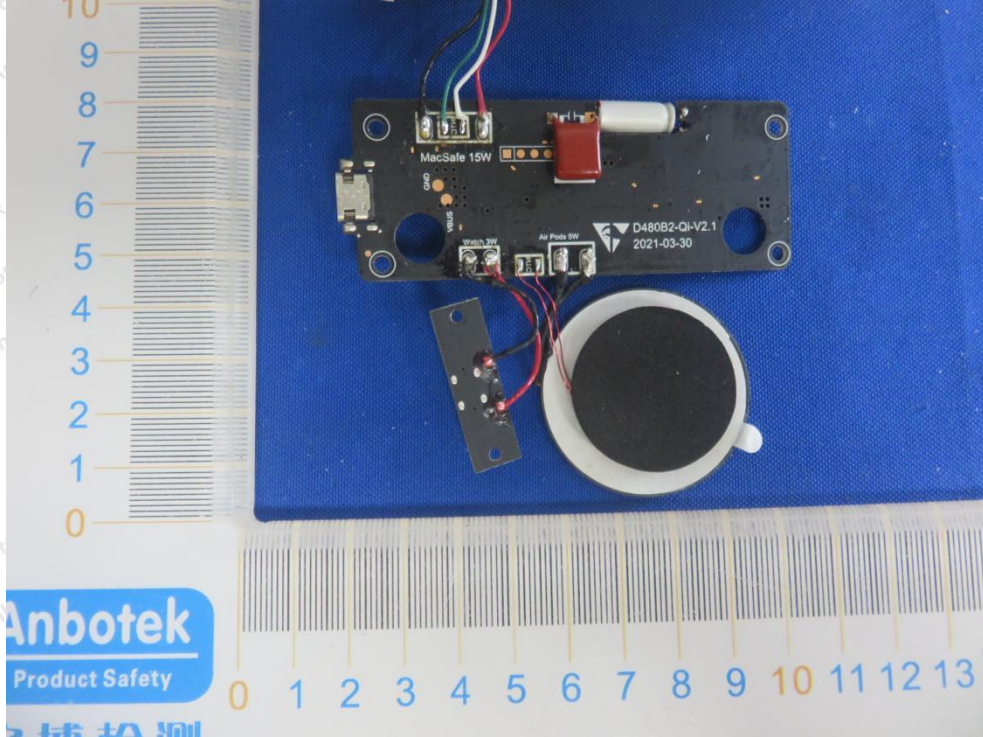


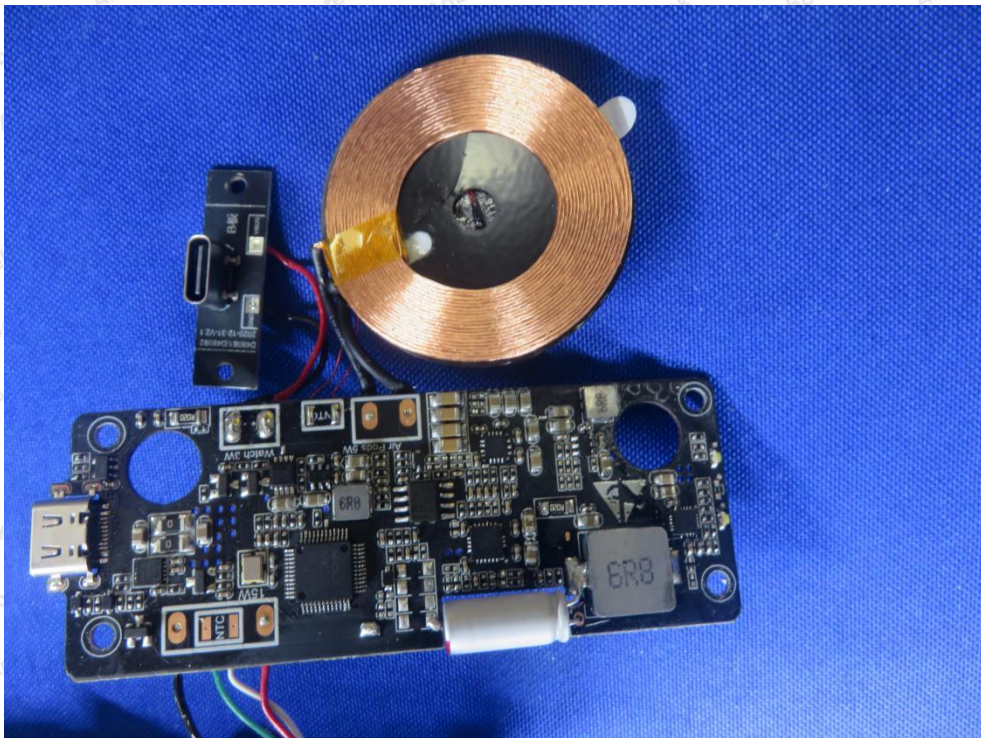
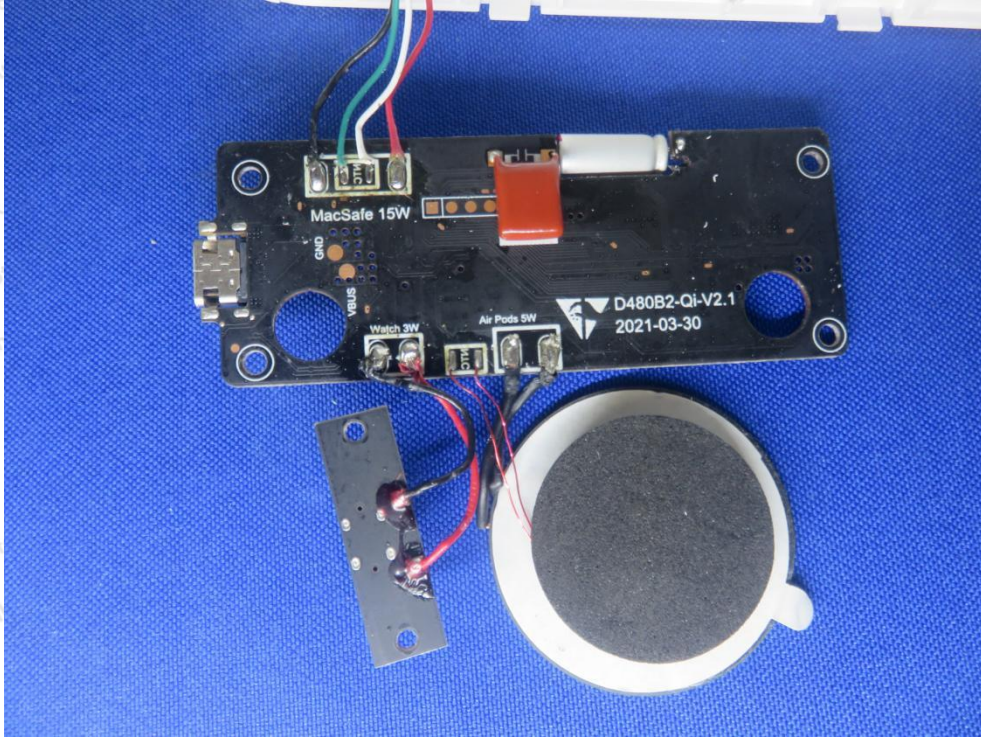


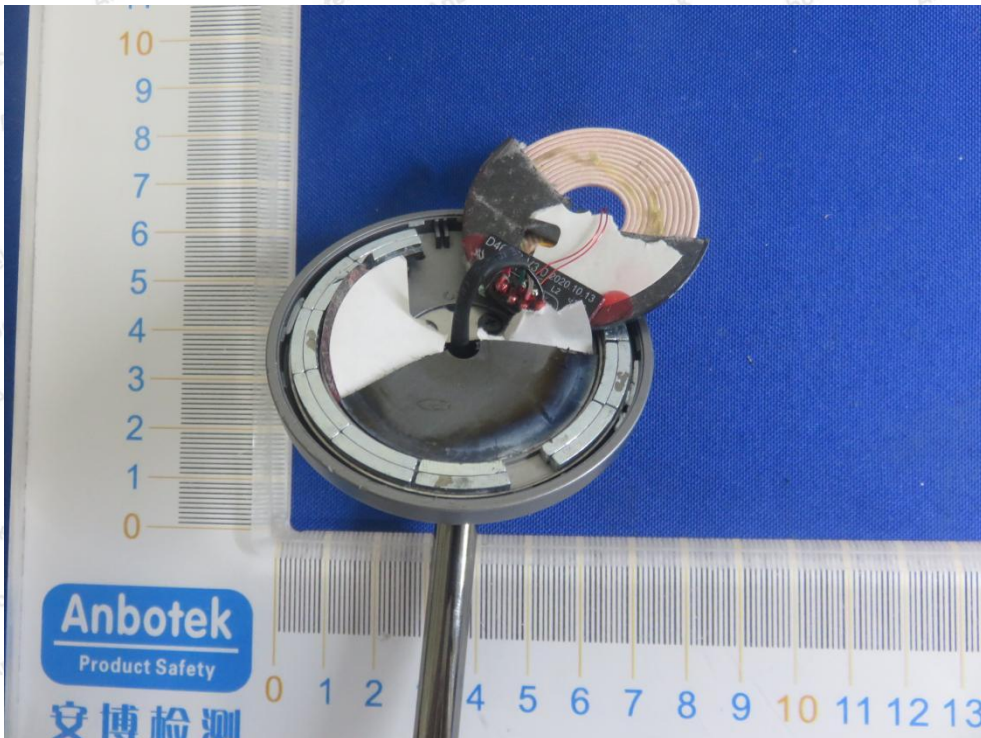
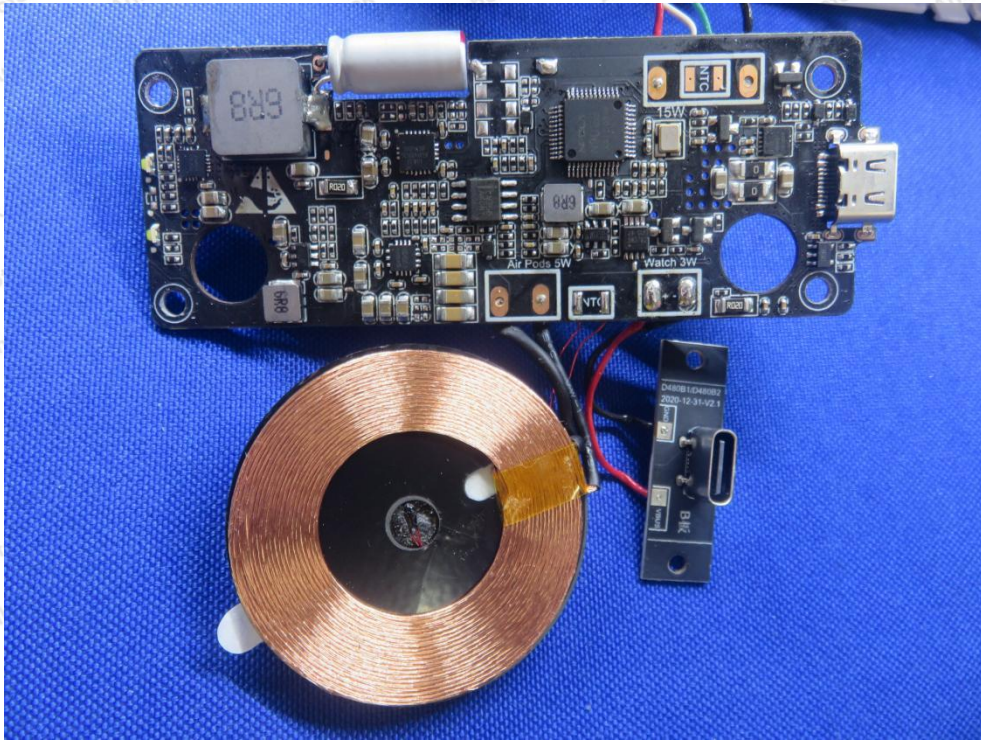
APPENDIX III -- INTERNAL PHOTOGRAPH











----- End of Report -----