

ST-TCMCAWM

User Manual

(Version: 1.0)



Declaration

Thank you very much for choosing this product! Please read the instruction manual carefully before using this product. All the information in this manual may be changed without notice.

Contents

1. Product Introduction and Accessories	3
1. 1 Product Introduction	3
1. 2 Product Accessories List	3
2. Product Specification	3
2. 1 Applicable Product	3
2. 2-2.4 Interface and Indicator Light.....	3
2. 5 System Support	3
2. 6 Working Voltage	3
2. 7 Static Current	3
2. 8 Product Size	3
2. 9 Product Weight.....	3
3. Appearance and Interface	3
3. 1 Appearance Interface and Function Description.....	3
4. Product Precautions	4

1. Product Introduction and Accessories

1.1 Product Introduction

The D356A is a novel adapter designed for charging Apple Watches. It can charge for Apple Watch by connecting iPad, MacBooks, Type-C power adapter, power bank & mobile phones.

1.2 Product Accessories List

- ST-TCMCAWM 1pc
- User Manual 1pc
- C female to C male Cable 1pc

2. Product Specification

2.1 It is suitable for charging the Apple Watch.

2.2 Interface: Type-C male: max support 5V/1A to charge the Apple Watch.

2.3 Indicator Light: White, display the connection status of the product.

2.4 Original Apple charging module: 677-02506.

2.5 System Support: Mac iOS 12.

2.6 Working Voltage: 5V.

2.7 Static Power:

MacOS Working: 100-400mA.

MacOS Sleeping: 14mA.

2.8 Product Size: 50.75*44*11.6 mm.

2.9 Product Weight: 141g.

2.10 Working Temperature: 0°C ~ 40°C (32°F ~ 104°F).

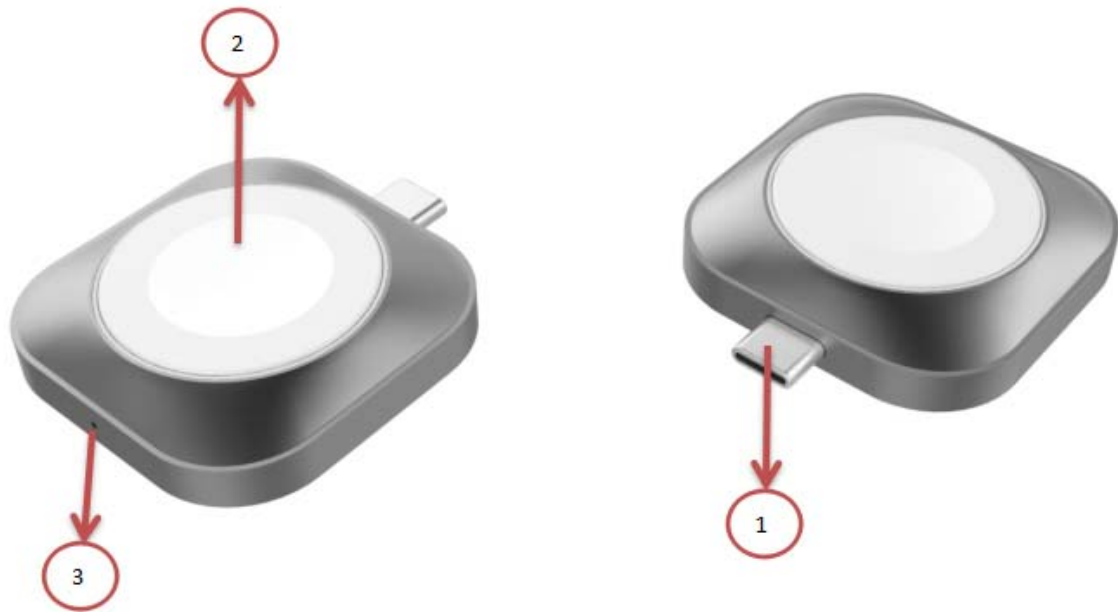
2.11 Storage Temperature: -25°C - 45°C (-13°F - 113°F).

2.12 Relative Humidity: Non-Condensing state 0% ~ 90%.

3. Appearance and Interface

3.1 Description of appearance and interface functions: :

As shown below:



NO.	Name	Functional Description
1	Type-C male	Max support 5V/1A to charge the Apple Watch.
2	iWatch Module	MFI677-02506
3	LED Light	White

4. Product Precautions

4.1 Do not allow any object (such as fuel, needle) or any liquid (such as water, drink) to fall into or seep into the product, causing the product to be unable to use normally.

4.2 Do not use or place the product in the following places: wet environment (such as bathroom, toilet); Exposure to dusty environment, stale objects inside.

4.3 If the equipment is not used for a long time, the product should be packed in plastic bags and stored in the packaging box to prevent dust accumulation and bad socket contact caused by socket oxidation.

• Do not repair or replace any part of this machine (unless otherwise instructed in this manual). Please leave all repairs to your distributor or authorized agent.

FCC STATEMENT :

This device complies with Part 15 of the FCC Rules. Operation is subject to the following two conditions:

- (1) This device may not cause harmful interference.
- (2) This device must accept any interference received, including interference that may cause undesired operation.

Warning: Changes or modifications not expressly approved by the party responsible for compliance could void the user's authority to operate the equipment.

NOTE: This equipment has been tested and found to comply with the limits for a Class B digital device, pursuant to Part 15 of the FCC Rules. These limits are designed to provide reasonable protection against harmful interference in a residential installation. This equipment generates uses and can radiate radio frequency energy and, if not installed and used in accordance with the instructions, may cause harmful interference to radio communications. However, there is no guarantee that interference will not occur in a particular installation. If this equipment does cause harmful interference to radio or television reception, which can be determined by turning the equipment off and on, the user is encouraged to try to correct the interference by one or more of the following measures:

- Reorient or relocate the receiving antenna.
- Increase the separation between the equipment and receiver.
- Connect the equipment into an outlet on a circuit different from that to which the receiver is connected.
- Consult the dealer or an experienced radio/TV technician for help.

FCC Radiation Exposure Statement:

This equipment complies with FCC radiation exposure limits set forth for an uncontrolled environment. This equipment should be installed and operated with minimum distance 20cm between the radiator & your body.