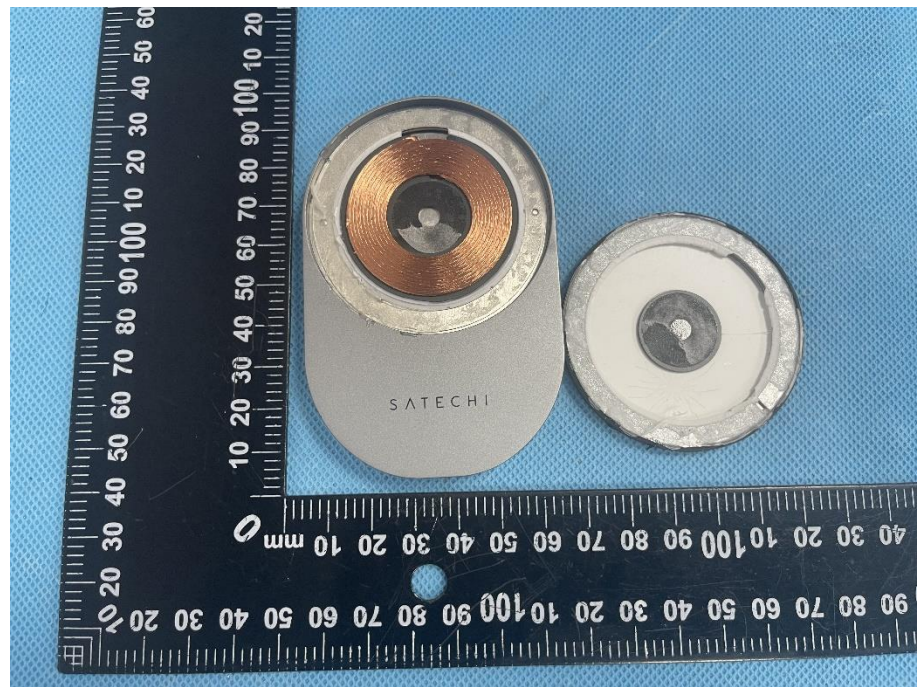


EXHIBIT 3 - EUT INTERNAL PHOTOGRAPHS

EUT Housing and Board View 1



EUT Housing and Board View 2

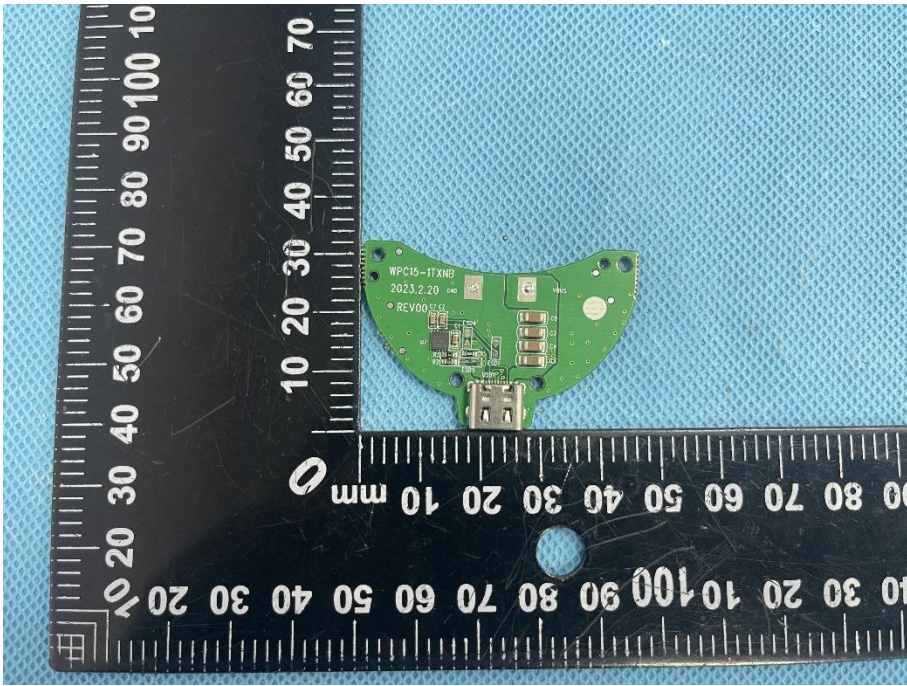
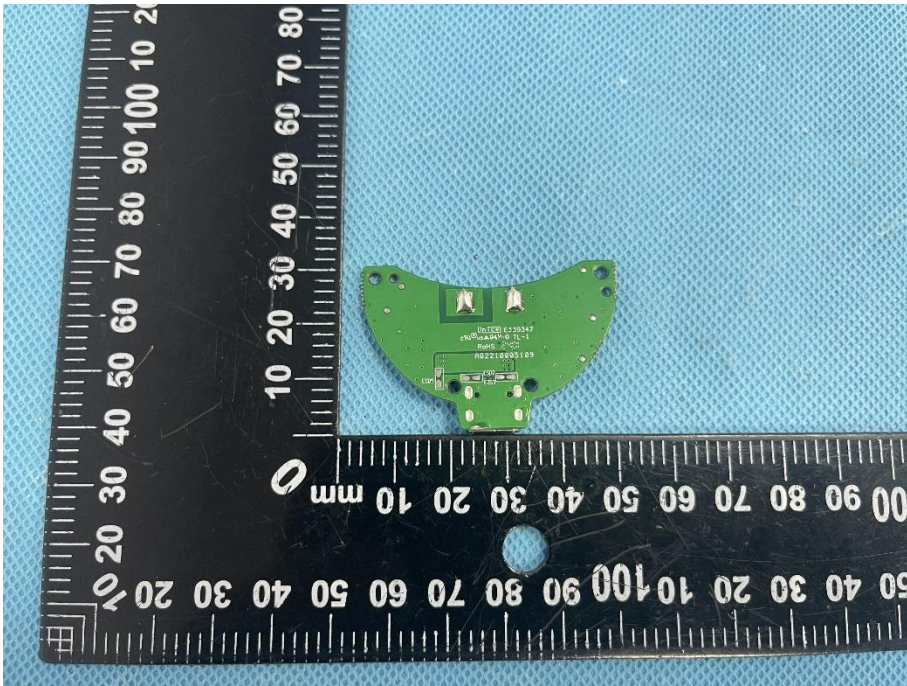


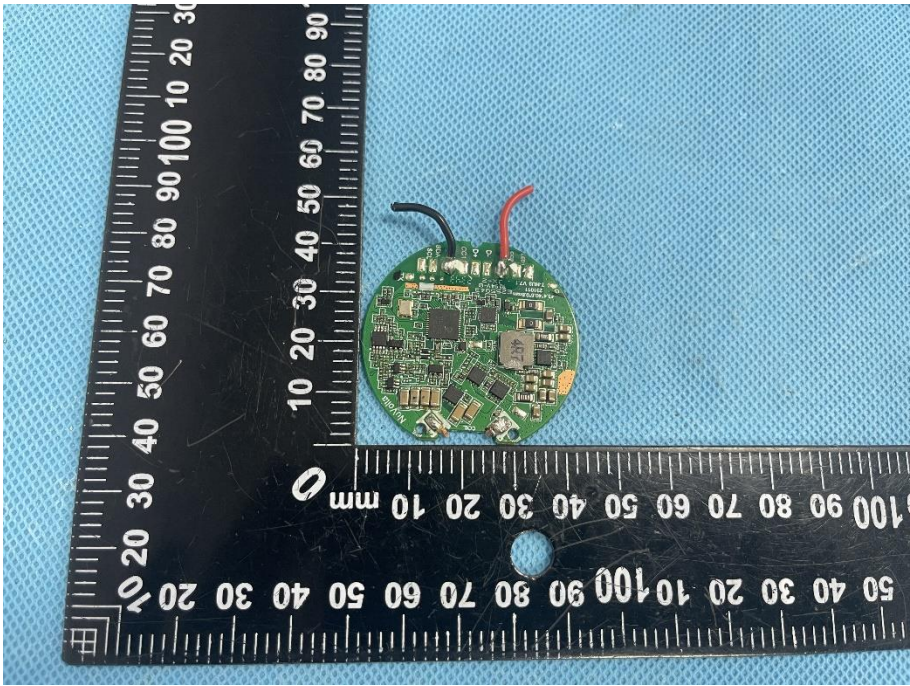

**EUT Housing and
Board View 3**

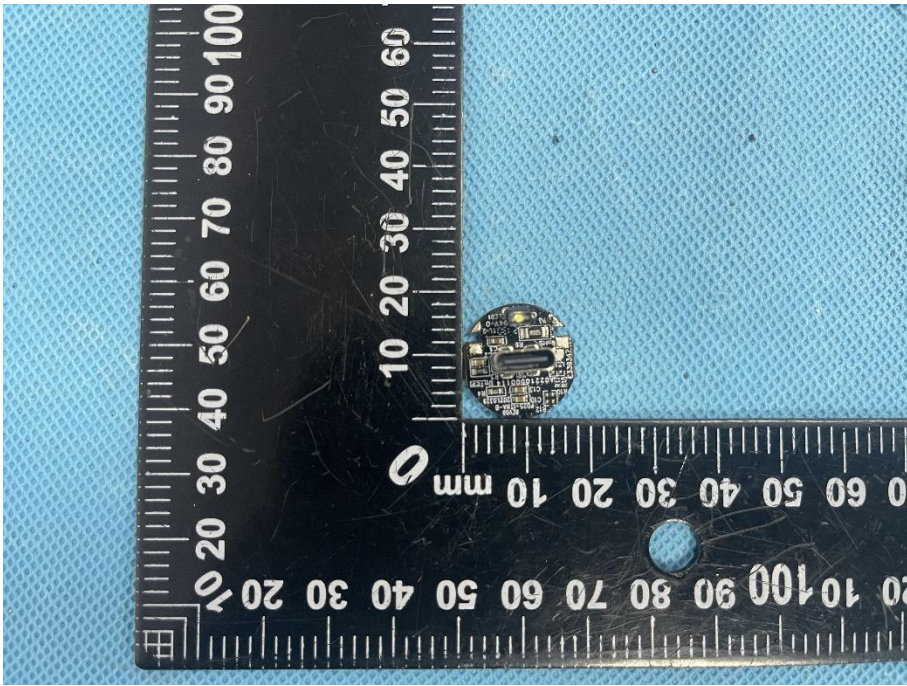
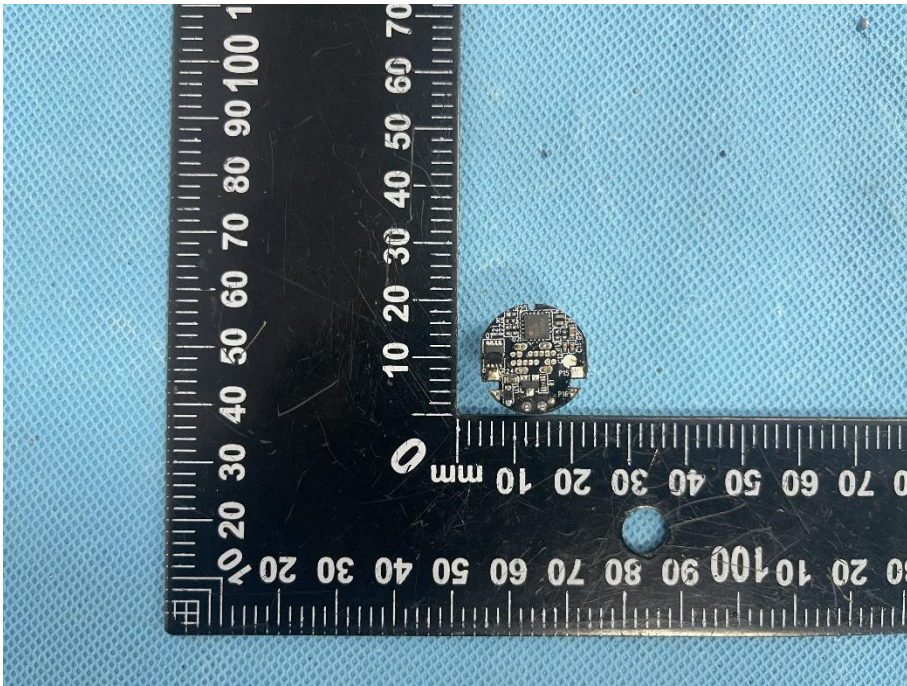


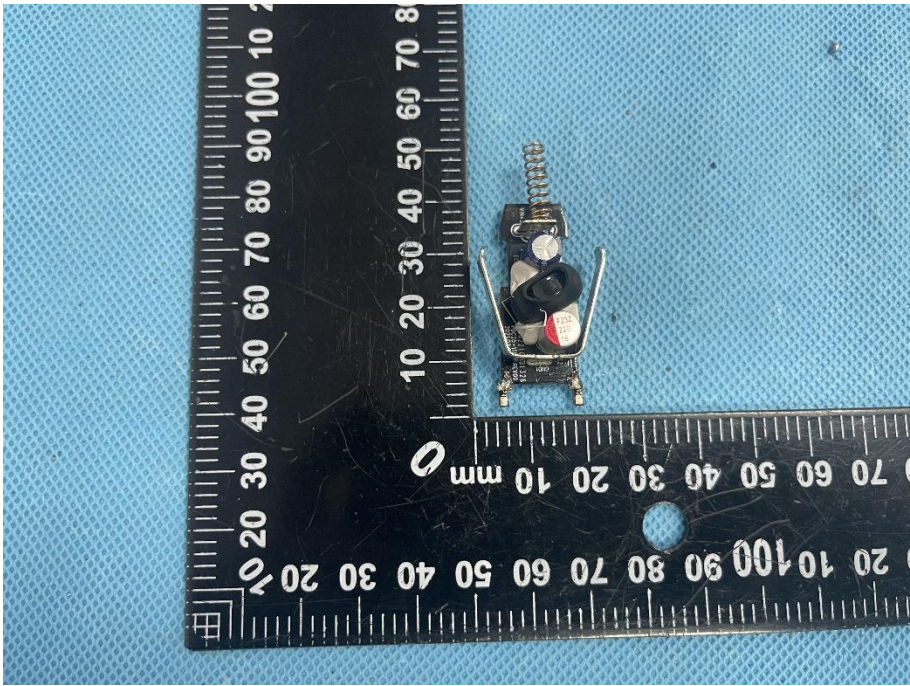
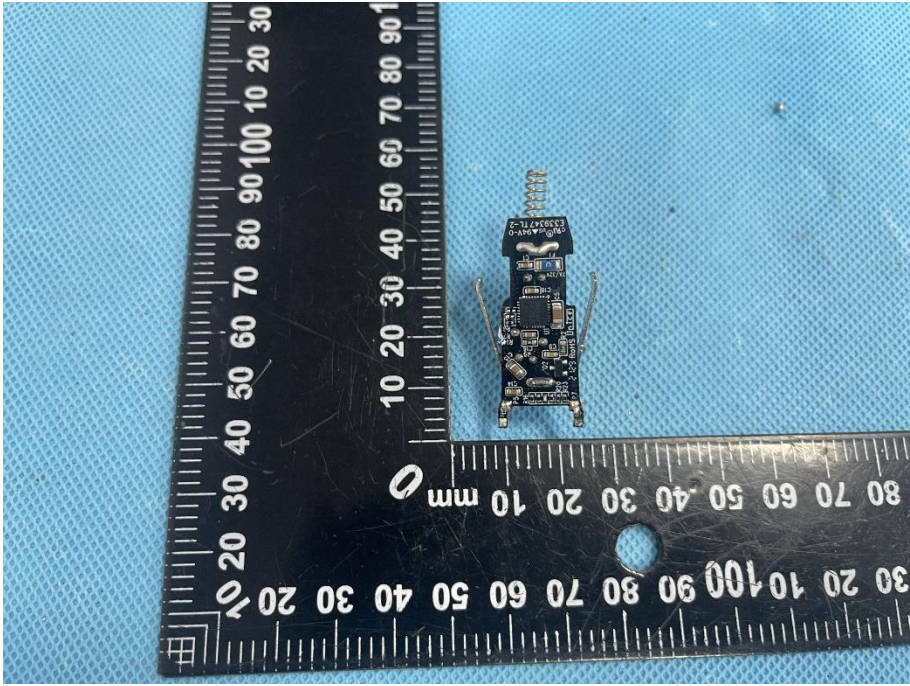
**EUT Housing and
Board View 4**



<p>Solder Board-Component View 1</p>	 <p>A photograph of a green PCB component with a USB connector, placed on a blue textured surface next to a black ruler. The component has the following markings: WPC15-ITXNB, 2023.2.20, and REV001555. The ruler shows dimensions in millimeters.</p>
<p>Solder Board-Component View 2</p>	 <p>A photograph of the same green PCB component from a different angle, showing component markings: 420513, 2023.2.20, RAMS, and R02210003109. The ruler shows dimensions in millimeters.</p>

<p>Solder Board-Component View 3</p>	 <p>A photograph showing the top view of a circular green solder board component. The component is placed on a blue textured surface next to a black L-shaped ruler for scale. The ruler has markings in millimeters, with the horizontal part showing 0 to 100 mm and the vertical part showing 0 to 90 mm. The component is circular with a diameter of approximately 30 mm. It features various electronic components, including a central square chip, several smaller surface-mount components, and two wires (one red, one black) extending from the top edge. The text 'LA 1000' is visible on the component.</p>
<p>Solder Board-Component View 4</p>	 <p>A photograph showing the bottom view of the same circular solder board component. It is placed on the same blue textured surface next to the same black L-shaped ruler. The component is circular with a diameter of approximately 30 mm. The bottom view shows the reverse side of the component, with a green solder mask and exposed copper pads. Two wires (one red, one black) are visible extending from the top edge. The text 'LA 1000' is visible on the component.</p>

<p>Solder Board-Component View 5</p>	 A microscopic view of a circular soldered board component. The component is a small, circular printed circuit board (PCB) with various electronic components and traces. It is mounted on a larger board. A black L-shaped ruler is placed next to the component for scale. The ruler has white markings in millimeters. The component is positioned at approximately 10 mm on the vertical ruler and 10 mm on the horizontal ruler. The background is a blue textured surface.
<p>Solder Board-Component View 6</p>	 A microscopic view of a circular soldered board component, similar to View 5. The component is a small, circular PCB with various electronic components and traces. It is mounted on a larger board. A black L-shaped ruler is placed next to the component for scale. The ruler has white markings in millimeters. The component is positioned at approximately 10 mm on the vertical ruler and 10 mm on the horizontal ruler. The background is a blue textured surface.

<p>Solder Board-Component View 7</p>	 <p>A photograph of a small, rectangular solder board component. The component is dark in color and has several gold-colored pins extending from its top edge. It is placed on a blue textured surface next to a black ruler with white markings. The ruler shows measurements in millimeters, with the component positioned between the 10 mm and 20 mm marks.</p>
<p>Solder Board-Component View 8</p>	 <p>A photograph of the same solder board component from a different angle. The component is dark and has several gold-colored pins extending from its top edge. It is placed on a blue textured surface next to a black ruler with white markings. The ruler shows measurements in millimeters, with the component positioned between the 10 mm and 20 mm marks.</p>

