

INTERNAL PHOTOS OF EUT

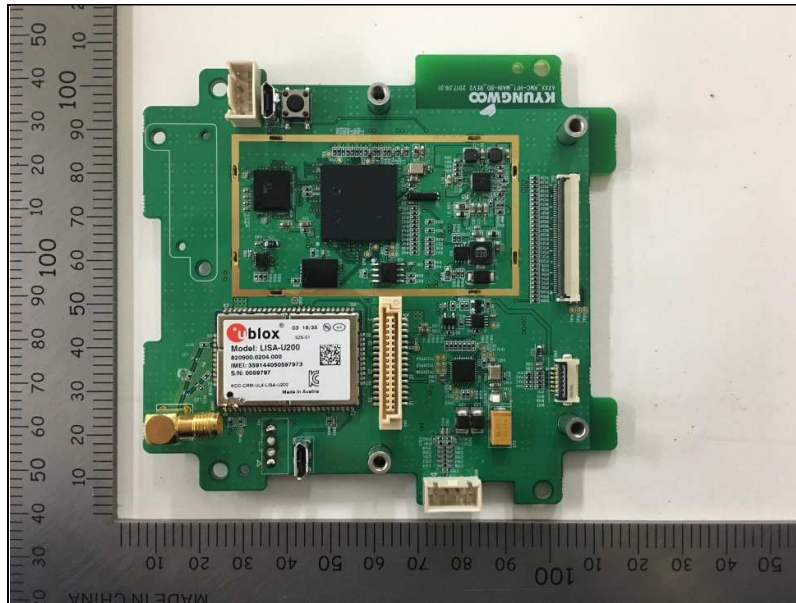
EUT case open



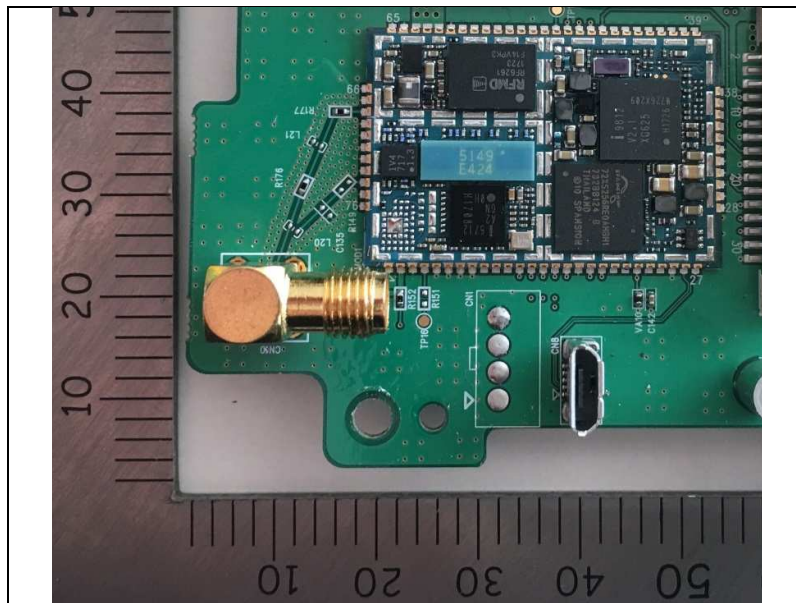
Main Board front side



Main Board front side(Except Shield can)



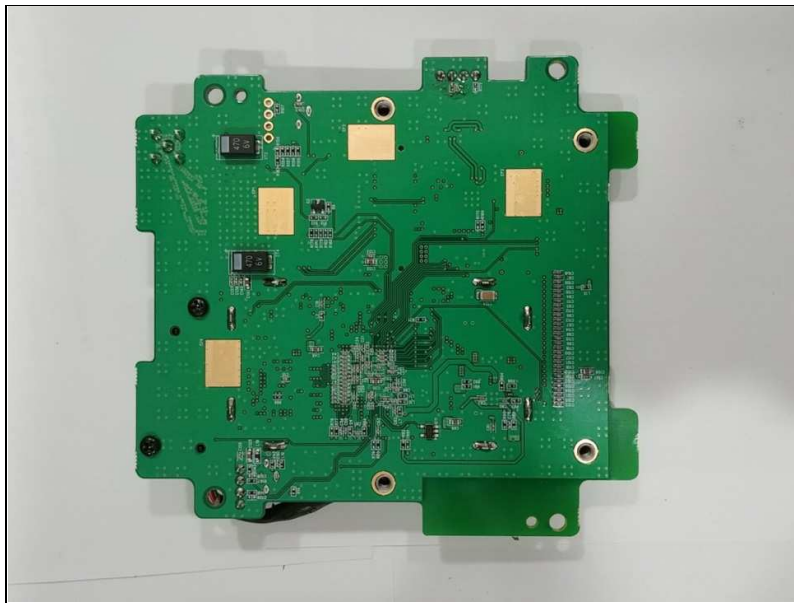
WWAN Module(Except Shield can)



Main Board rear side



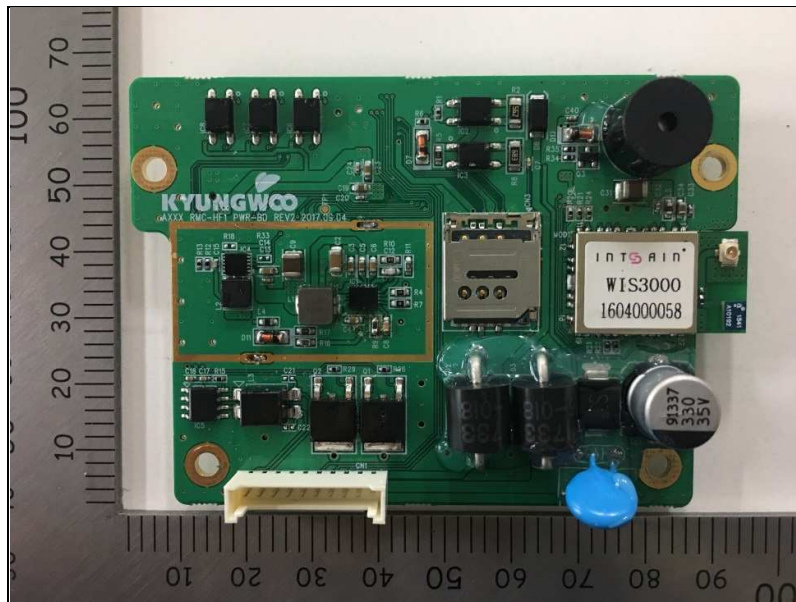
Main Board rear side(Except gasket)



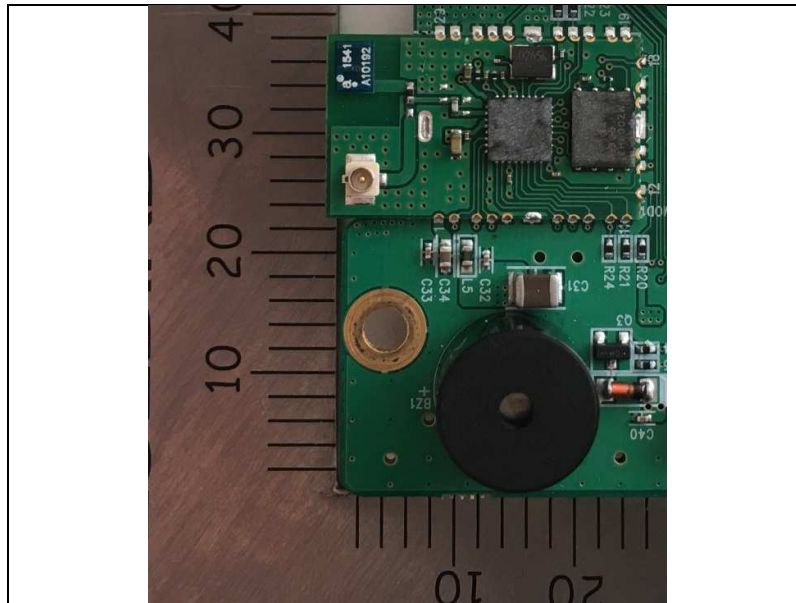
Sub Board front side



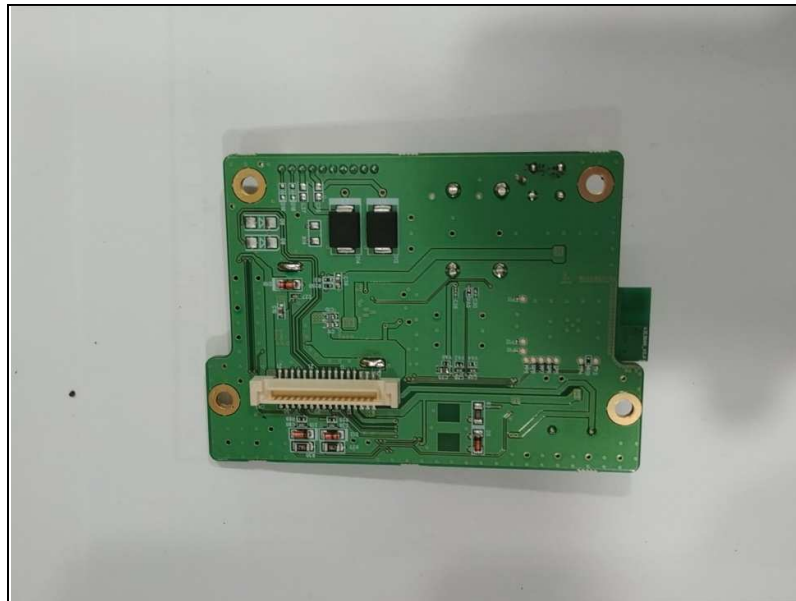
Sub Board front side(Except Shield can)



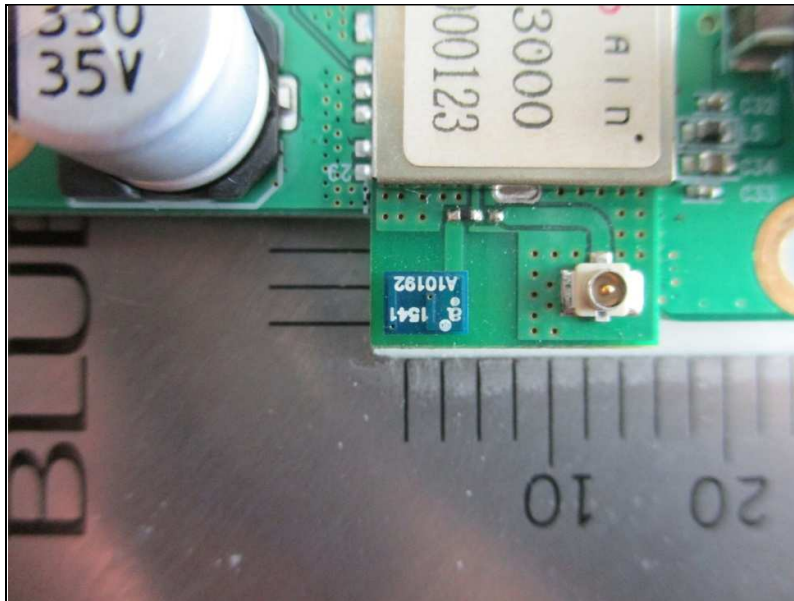
WLAN Module(Except Shield can)



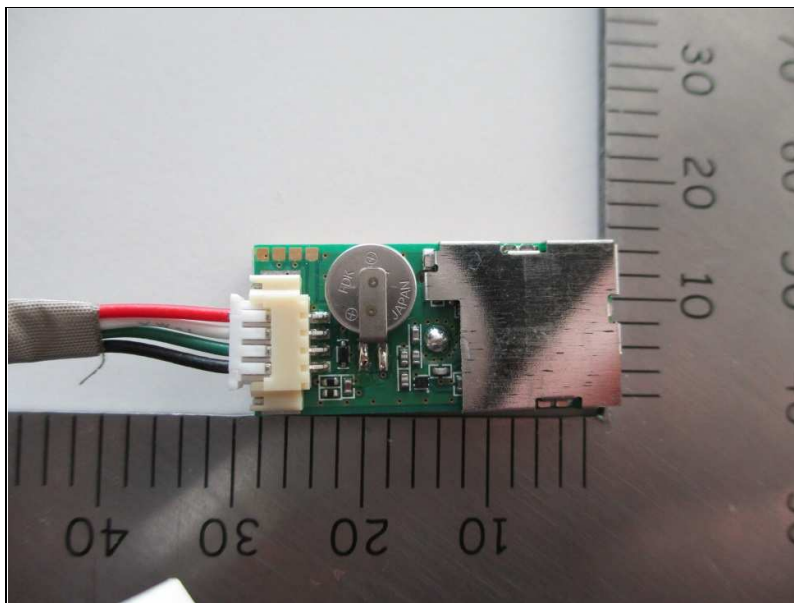
Sub Board rear side



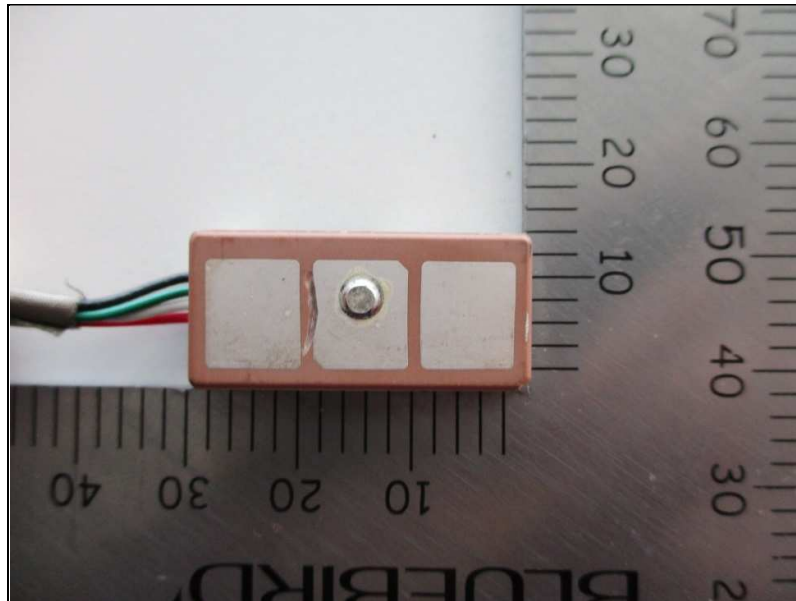
WiFi Chip Antenna



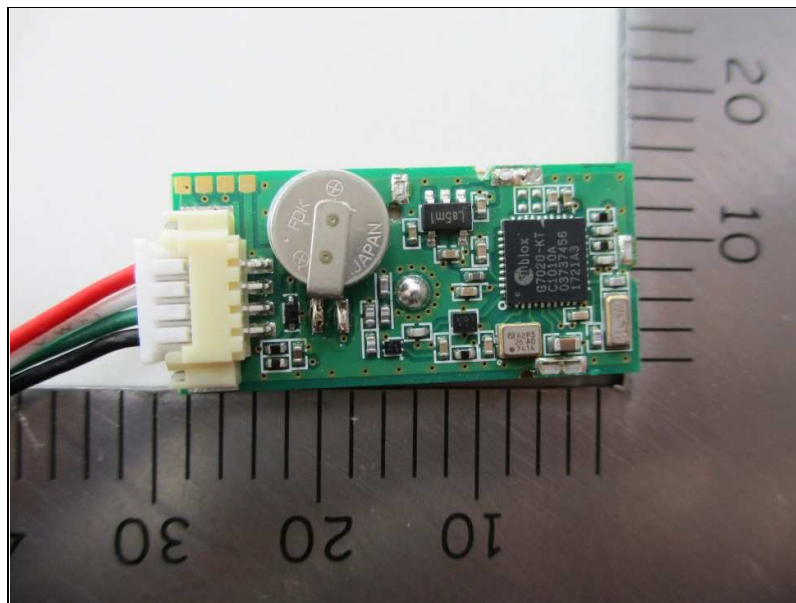
GPS Module Top side



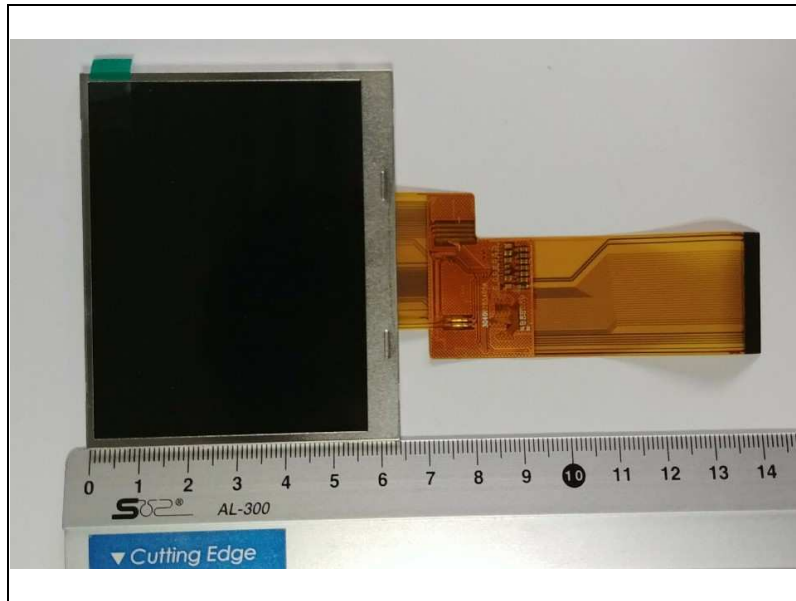
GPS Module Bottom side



GPS Module Top side(Except shield can)



LCD Front side



LCD Rear side



RFID Antenna Front side



RFID Antenna Rear side



Touch panel Front side



Touch panel Rear side

