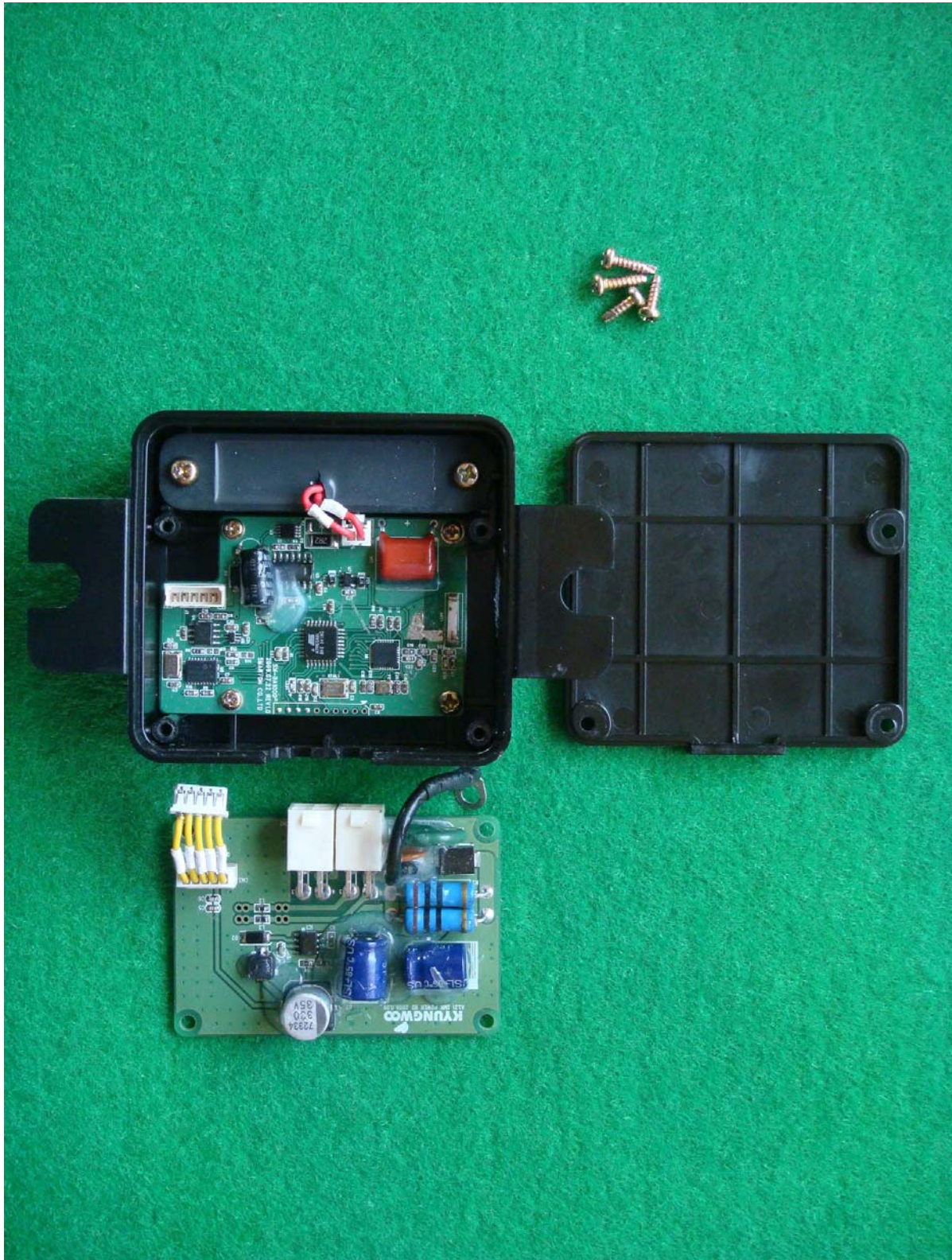




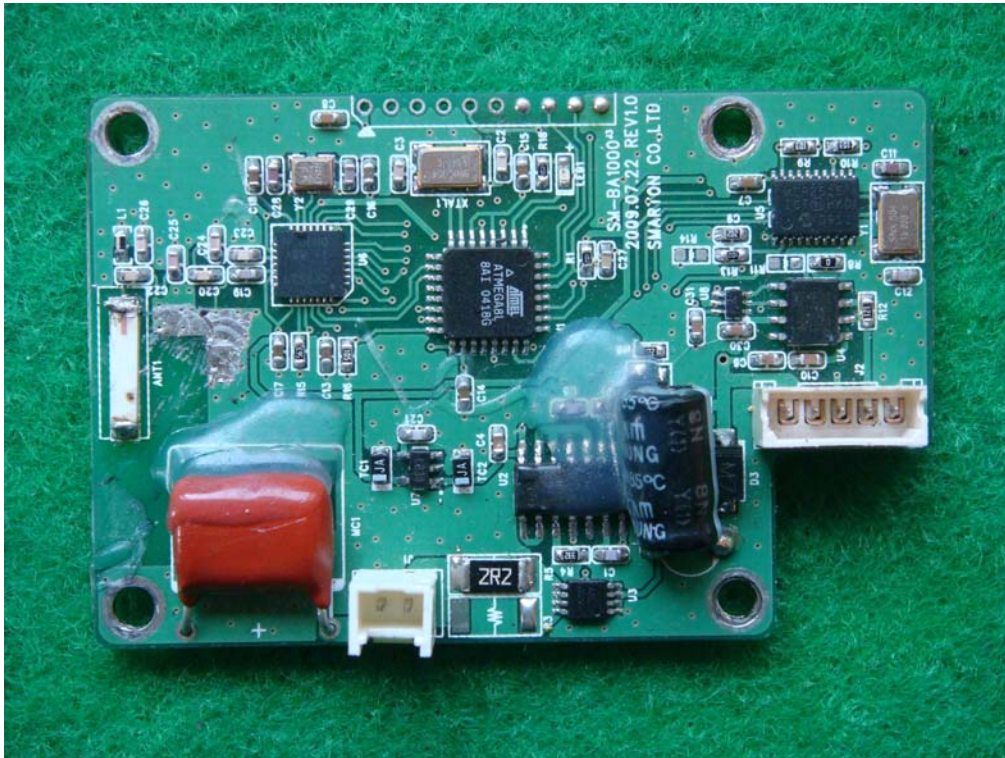
Internal Photographs

<Photograph 1: Cover removed>

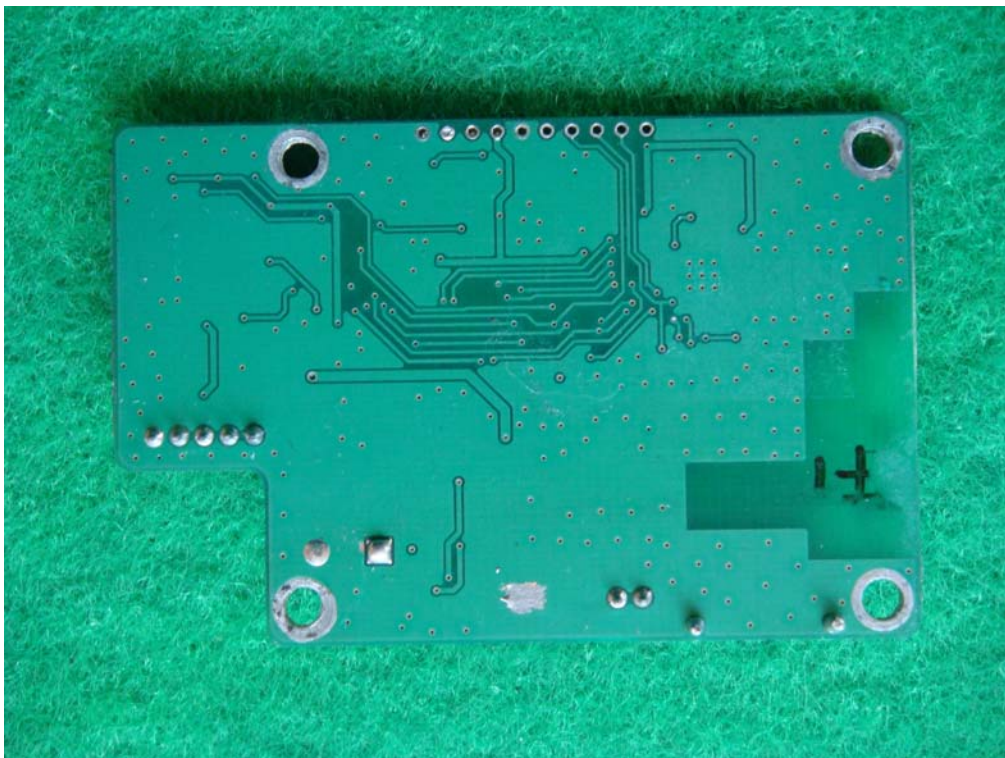




<Photograph 2: FRONT view (Main board with RF part)>

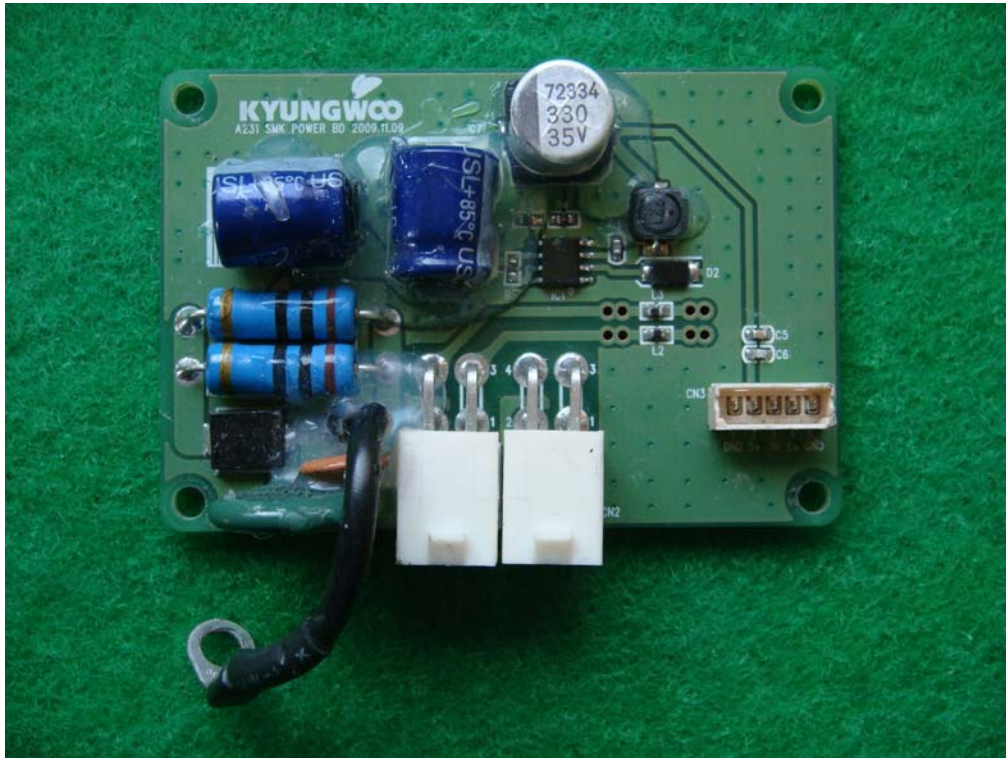


<Photograph 3: REAR view (Main board with RF part)>

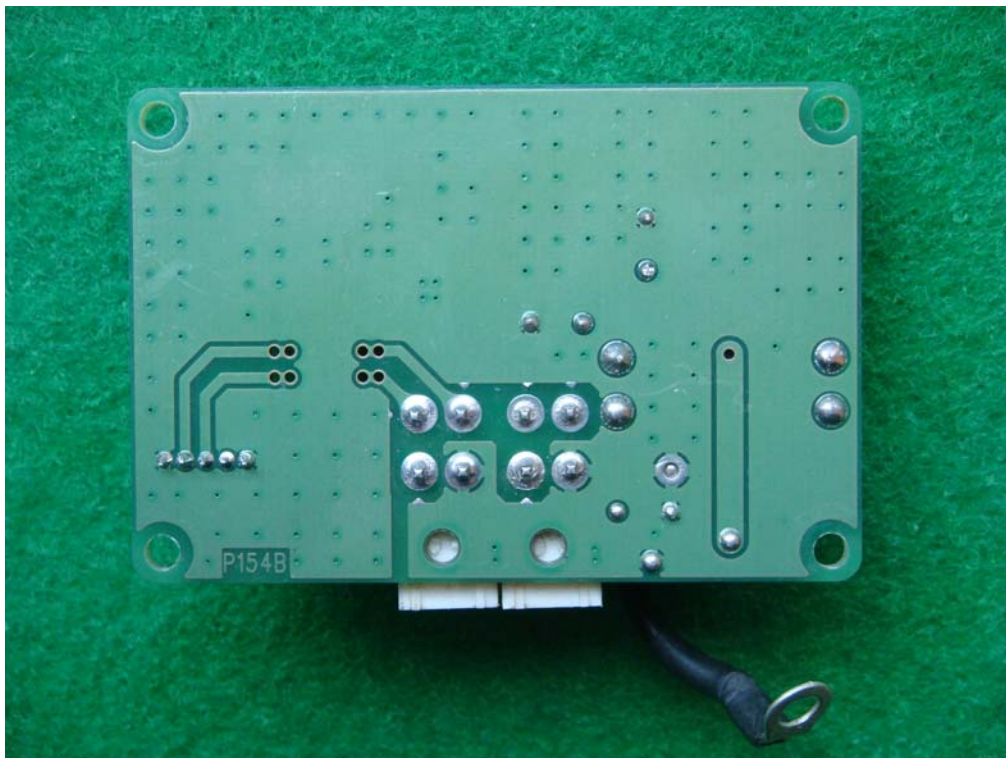




<Photograph 4: FRONT view (Main board with RF part)>

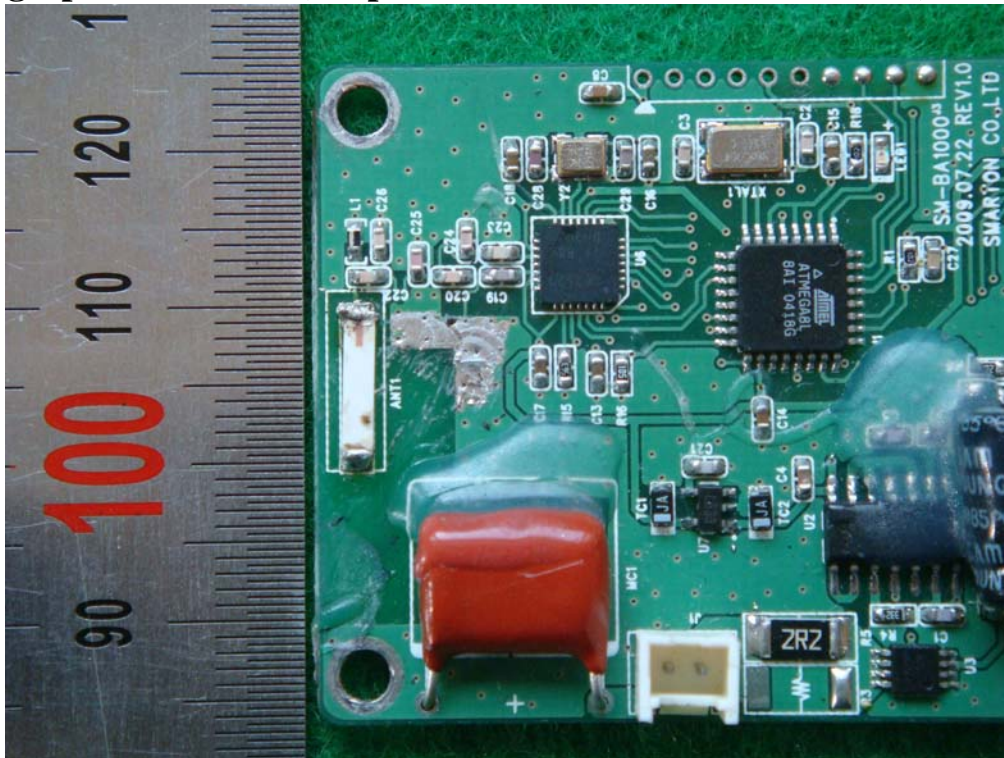


<Photograph 5: REAR view (Main board with RF part)>





<Photograph 6: Antenna (Chip antenna for 2.4 GHz Transceiver)>



<Photograph 7: Antenna (Loop Coil antenna for 125 kHz Transmitter)>



Rear view (adhesive removed)

