

size: 68x68 mm 彈簧摺

R: 7 mm



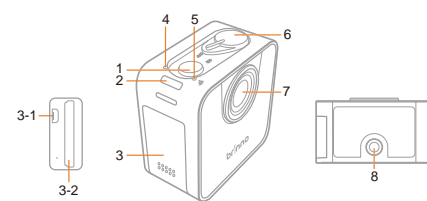
Installing the Brinno Camera App on your smartphone



For more information or user manual please go to:
www.brinno.com/tlc120

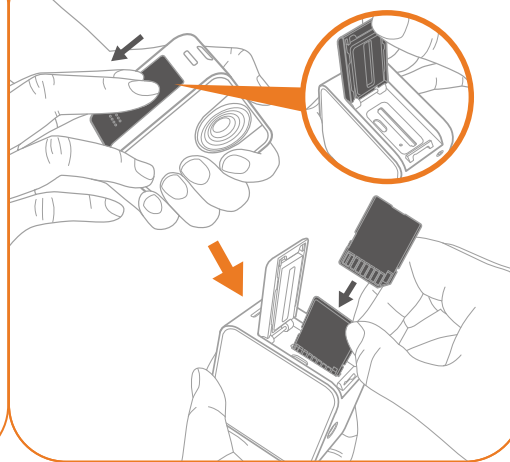


Camera Parts

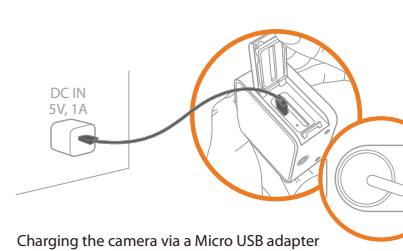


Status LED Indicator
Red (Battery):
• Battery Low
• SD Card Error
Green (Recording):
• Start REC. flashes for 10 seconds
• Capturing: flashes once while capturing
• Standby: Press OK button, flashes once
Blue (Wi-Fi/BLE):
• Connecting: flashing
• Wi-Fi/BLE ON: on

Installing the SD Card

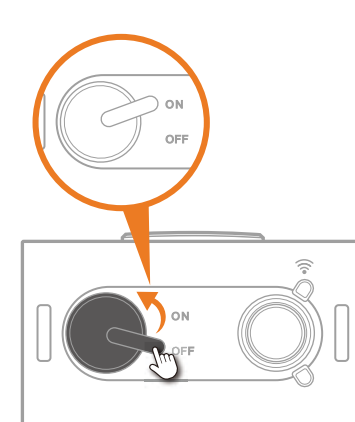


Charging the Camera Battery



* First time battery charge requires **6 hours**.
• Battery charging, LED Orange.
• Battery full, LED green.

Power on the Camera



Wireless and BT can support:
IEEE 802.11b/802.11g and Bluetooth4.0

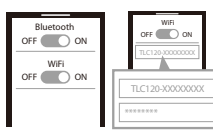
The information on the sticker (in the box, below) is required when connecting the camera to a smartphone. If there is no sticker, refer to the supplied English version of the instruction manual.



Connecting

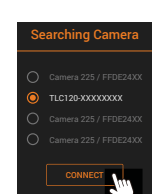
AP (Access Point) Mode

Step-1 On your phone settings,
1. Turn ON Bluetooth.
2. Turn ON WiFi, select your camera WiFi SSID (TLC120-XXXXXXX) Password: 12345678



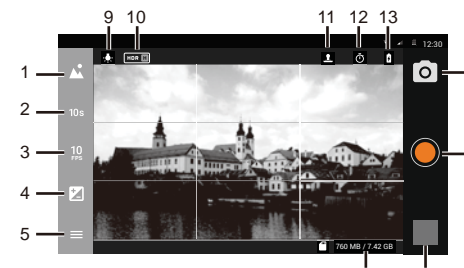
Step-2 On your camera App.

1. Tap camera icon
2. Select your camera ID
then tap "CONNECT".
3. You will see the Main Screen, now have fun with your Brinno time lapse camera.



* Even with no WiFi connection, you can use the App to control the camera via Bluetooth.
* The default WiFi connection mode is AP (access point). To change to hotspot mode please refer to the User Manual available at: www.brinno.com/tlc120

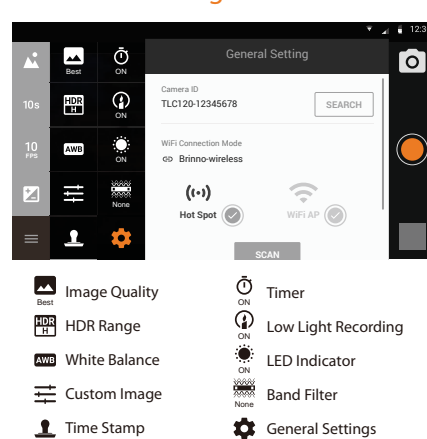
Main Screen



1. Scene Setting
2. Time Interval Setting
3. Playback Rate Setting
4. Exposure
5. Menu
6. Photo Shooting
7. Start/Stop Recording
8. Playback
9. White Balance Mode Status
10. HDR Range Status
11. Time Stamp On
12. Timer On
13. Battery Status
14. Storage Status

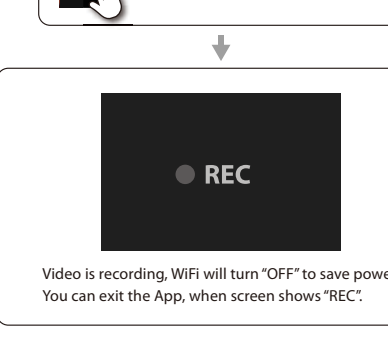
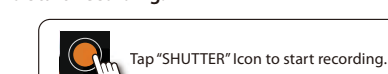
! If you can't see the preview image, you still can control your camera with the Bluetooth connection.

Setting Screen



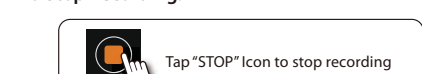
Start/Stop Recording with App

To Start Recording:



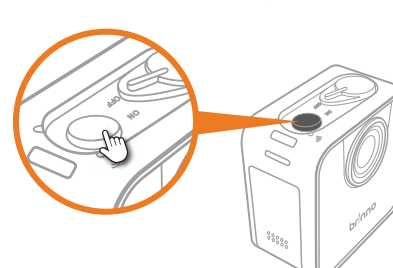
Video is recording, WiFi will turn "OFF" to save power. You can exit the App, when screen shows "REC".

To Stop Recording:



In normal situation, WiFi will connect automatically.

Start/Stop Recording without App



To Begin Recording
Hold the shutter button for 0.5 second to start recording, the LED indicates green and flashes while capturing each frame.
To Stop Recording
Hold the shutter button for 2 seconds to stop recording, the GREEN LED will stop flashing.
! Camera will function before App installation.

Note

FCC FEDERAL COMMUNICATIONS COMMISSION INTERFERENCE STATEMENT
This equipment has been tested and found to comply with the limits for a Class B digital device, pursuant to Part 15 of the FCC Rules. These limits are designed to provide reasonable protection against harmful interference in a residential installation. This equipment generates, uses and can radiate radio frequency energy and, if not installed and used in accordance with the instructions, may cause harmful interference to radio communications. However, there is no guarantee that interference will not occur in a particular installation. If this equipment does cause harmful interference to radio or television reception, which can be determined by turning the equipment off and on, the user is encouraged to try to correct the interference by one or more of the following measures:
-- Reorient or relocate the receiving antenna.
-- Increase the separation between the equipment and receiver.
-- Connect the equipment into an outlet on a circuit different from that to which the receiver is connected.
-- Consult the dealer or an experienced radio/TV technician for help.
CAUTION:
Any changes or modifications not expressly approved by the party responsible for compliance could void the user's authority to operate the equipment. This device complies with part 15 of the FCC Rules.
Operation is subject to the following two conditions:
(1) This device may not cause harmful interference, and
(2) this device must accept any interference received, including interference that may cause undesired operation.

FCC RF Radiation Exposure Statement:
1. This Transmitter must not be co-located or operating in conjunction with any other antenna or transmitter.
2. This equipment complies with FCC RF radiation exposure limits set forth for an uncontrolled environment.
This equipment should be installed and operated with a minimum distance of 20 centimeters between the radiator and your body.
BSMI 有電池產品
CAUTION:
RISK OF EXPLOSION IF BATTERY IS REPLACED BY AN INCORRECT TYPE.
DISPOSE OF USED BATTERIES ACCORDING TO THE INSTRUCTIONS
警告:
本電池如果更換不正確會有爆炸的危險。請依照製造商說明書處理過之電池。
NCC LP0002
低功率電波輻射性電機管理辦法
第十二條 經型式認證合格之低功率射頻電機，非經許可，公司、商號或使用者均不得擅自變更頻率、加大功率或變更原設計之特性及功能。
第十三條 低功率射頻電機之使用不得影響飛航安全及干擾合法通信；經發現有干擾現象時，應立即停用，或改善設法消除干擾。前項合法通信，指依電信法規定作業之無線電通信。低功率射頻電機須忍受合法通信或工業、科學及醫療用電波輻射性電機設備之干擾。