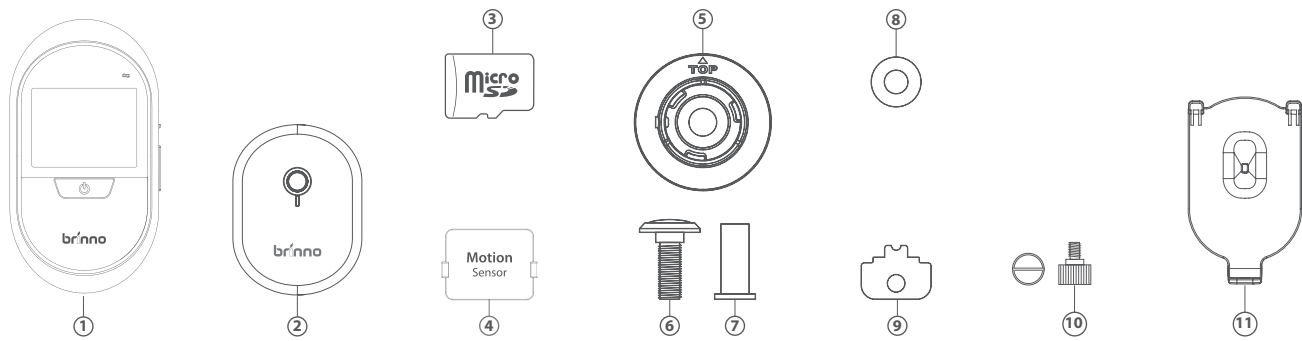


PeepHole Viewer

The Digital Door Viewer!

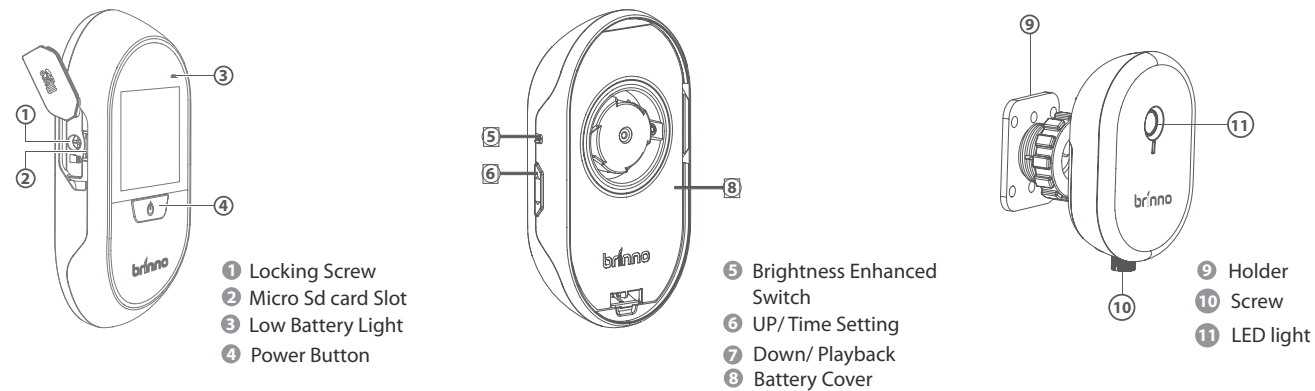
PHV1330M

Package Contents



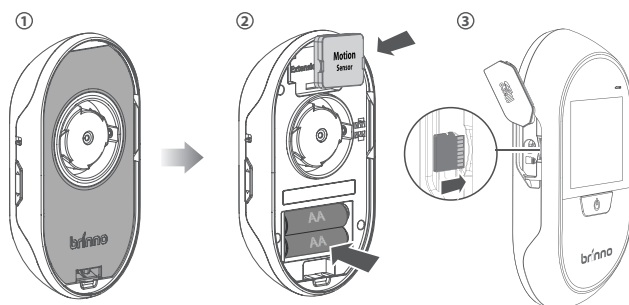
- 1 PHV1330M 2 PHV1330M Transmission 3 MicroSD 4 PHV1330M Receiver 5 Base Flange 6 PeepHole Lens 7 PeepHole Barrel 8 Washer 9 Tightening Tool 10 Screw 11 Holder

Parts of Device



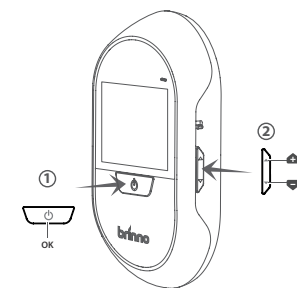
Package Contents

Install Batteries, Receiver, and MicroSD card

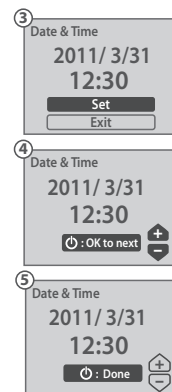


- 1 Open battery cover 2 Install 2 AA batteries and Receiver 3 Insert MicroSD card

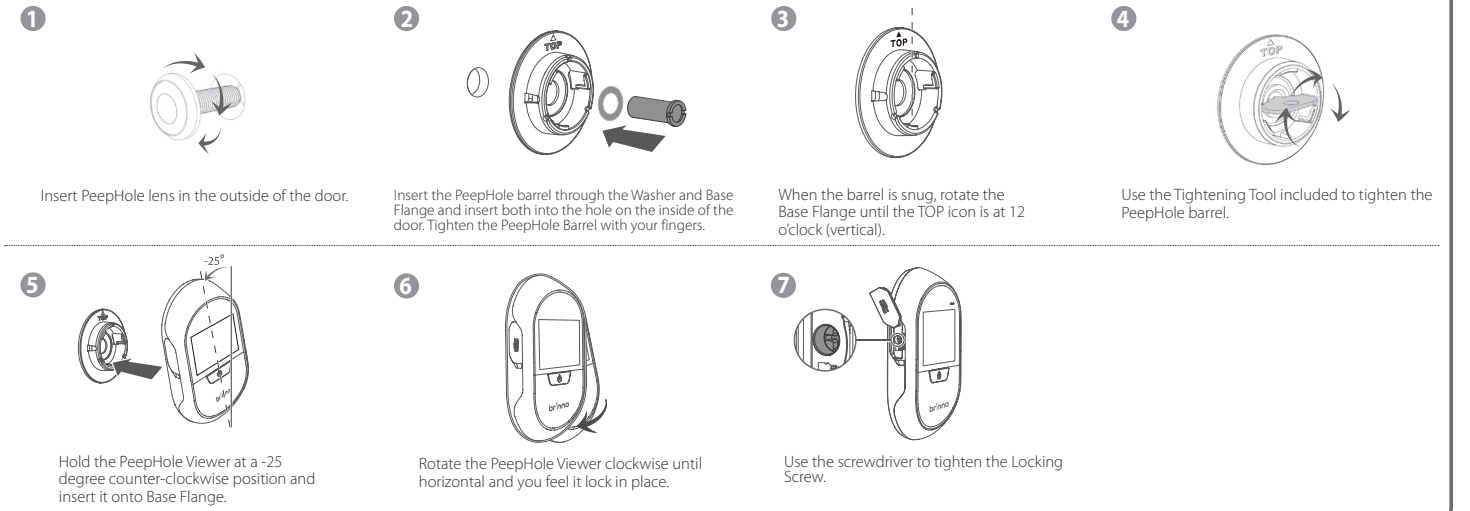
Set Date and Time



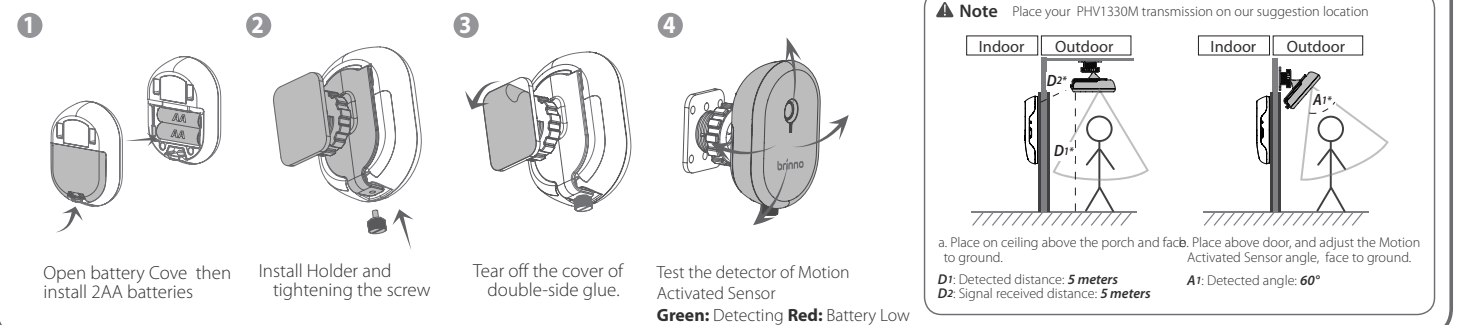
- 1 Turn on PeepHole Viewer 2 Press "UP" button for 3 seconds 3 Select "Set" to enter setting mode 4 Set the date and time 5 Done



Installation- PHV1330M

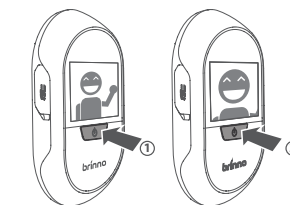


Installation- PHV1330M Transmission



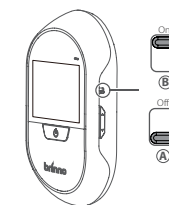
Functions

Change Viewing Modes



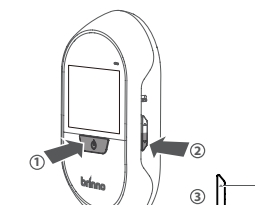
- 1 Hold power button for 1 second to see "Regular" image. 2 Press power button again to change the viewing modes to see "Zoom" image.

Low Light Level Enhancement



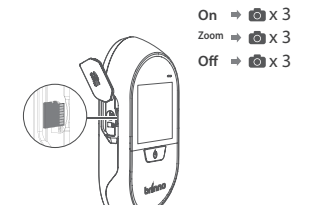
- When outside environment is too dark to see, you can turn on Low Light Level Enhance mode, it will increase the image brightness. A. Off B. On

Playback Images



- 1 Turn on PeepHole Viewer 2 Press "Down" button to watch playback images. 3 Press "Up" and "Down" button to review images.

Image Recording



- PeepHole viewer will record 3 pictures at below status: 1. Power on 2. See zoom view 3. Power off After 10 seconds of inactivity you will leave playback mode.

Specification

PHV1330M

Model: PHV1330M
PeepHole barrel: ~12 mm
- fits any door 35~57mm(1.38"~2.24") thick.
- View Angle: Regular Mode : 96° , Zoom Mode: 60°
Sensor: ~1.3 Mega Pixel CMOS
LCD Screen: 3.0" TFT
Storage: Micro SD card (Maximum is 32 GB, recommend is 8 GB)
Power: 2 AA batteries (good for approx.1300 "peeps")
Accessories: Base Flange, Tightening Tool, PeepHole, 2 AA Batteries, User Manual
Size: 87(W)x 158(H)x 33(D) mm
Weight: 160 g (without batteries)

PHV1330M Transmission

Model: PHV1330M Transmission
Detect Angle: 60°
Detect Distance: 3~5 meters
Receiver Distance: 5 meters
Power Source: 2 AA batteries
Accessories: Holder, Receiver, 2 AA Batteries, User Manual
Size: 66(W) x 90(H) x 24(D) mm
Weight: 20 g (without batteries)

Federal Communication Commission Interference Statement

This equipment has been tested and found to comply with the limits for a Class B digital device, pursuant to Part 15 of the FCC Rules. These limits are designed to provide reasonable protection against harmful interference in a residential installation. This equipment generates, uses and can radiate radio frequency energy and, if not installed and used in accordance with the instructions, may cause harmful interference to radio communications. However, there is no guarantee that interference will not occur in a particular installation. If this equipment does cause harmful interference to radio or television reception, which can be determined by turning the equipment off and on, the user is encouraged to try to correct the interference by one of the following measures:

- Reorient or relocate the receiving antenna.
- Increase the separation between the equipment and receiver.
- Connect the equipment into an outlet on a circuit different from that to which the receiver is connected.
- Consult the dealer or an experienced radio/TV technician for help.

FCC Caution: Any changes or modifications not expressly approved by the party responsible for compliance could void the user's authority to operate this equipment.

This device complies with Part 15 of the FCC Rules. Operation is subject to the following two conditions:

- (1) This device may not cause harmful interference
- (2) this device must accept any interference received, including interference that may cause undesired operation.