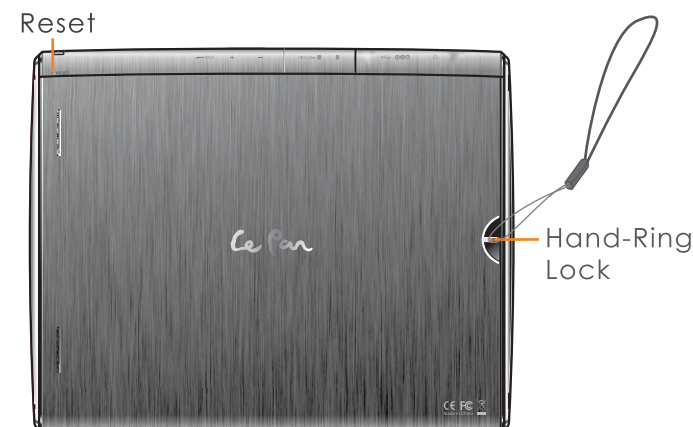
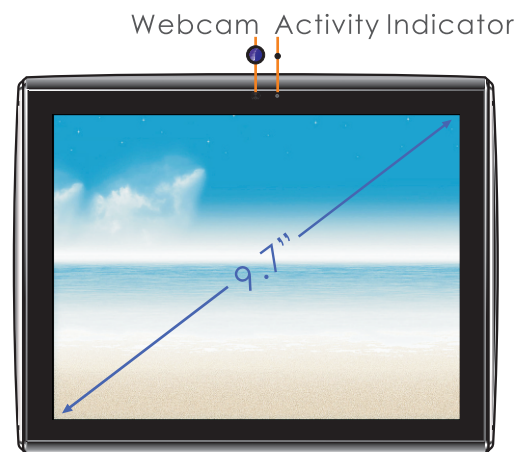
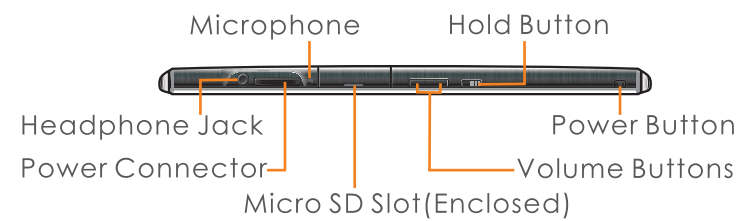


367mm

123mm

121mm

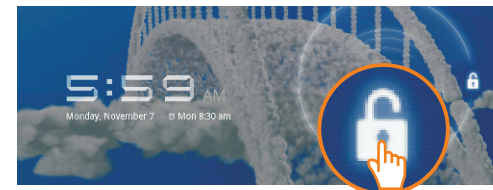
① Overview



② Power on your Tablet

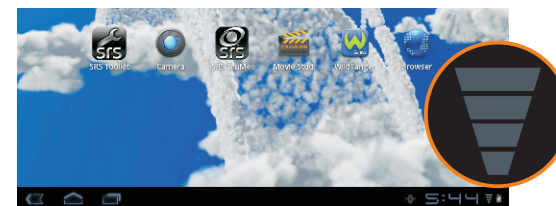


- Press the power button for seconds.



- Touch the Unlock and Slide.

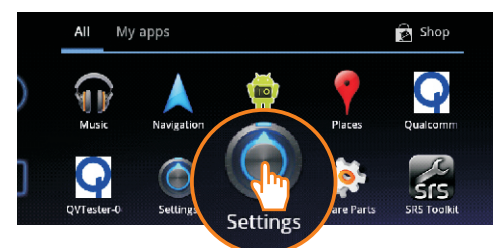
③ Connect to Wi-Fi network



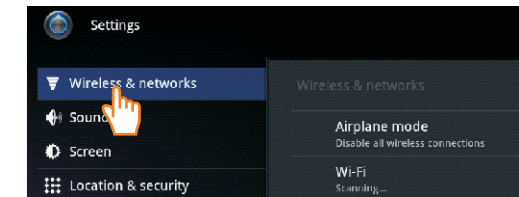
- Available Wi-Fi network found.



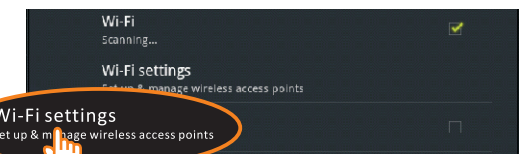
- Touch Launcher Icon in which all application files included.



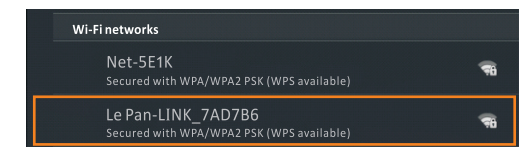
- Touch to Select the **Settings**.



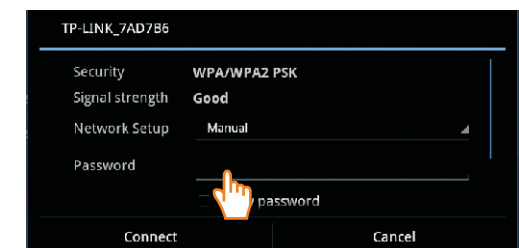
- Touch to select **Wireless & networks**.



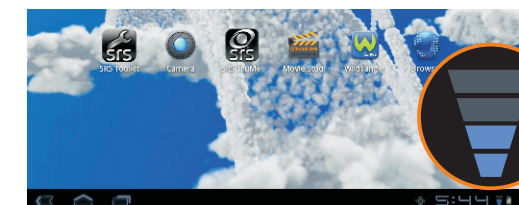
- Touch **Wi-Fi settings**.



- Select your preferred one from the available network list.
- You may be asked to enter Wi-Fi password.



- Touch to input password.



- Wi-Fi connected successfully.

①

②

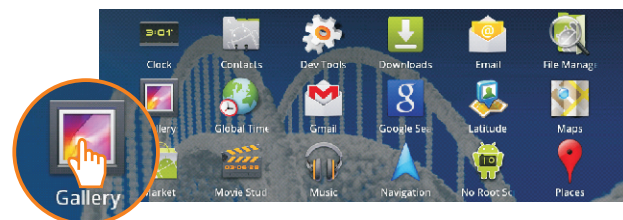
③

121mm

367mm

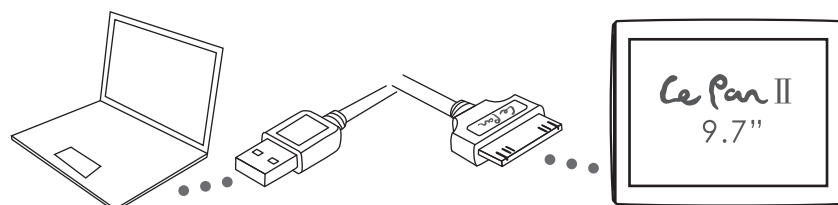
123mm

④ Open an application



- Touch Launcher Icon  Apps.
- Touch the application you want to open.

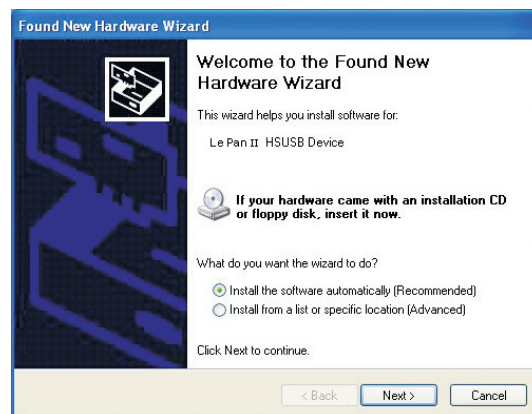
⑤ Transfer documents between Tablet and Computer



- Take the 30 pin to USB cable in box to connect Tablet and Computer.

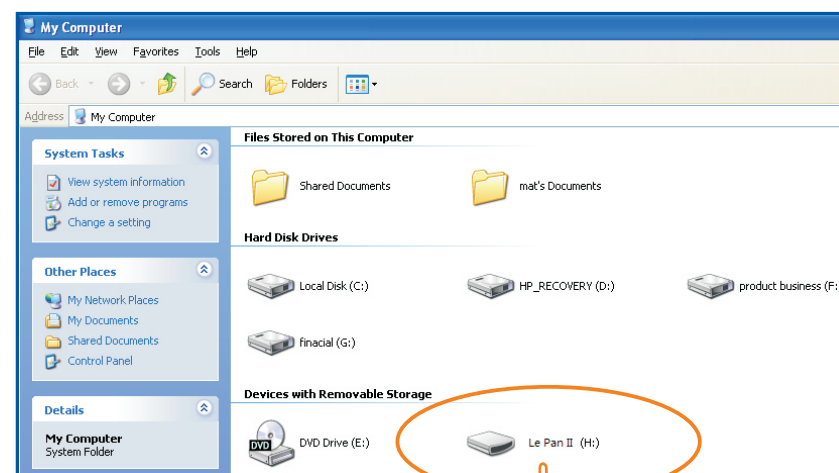
Tips: Please install "Windows Media Player 11" if your computer is with windows XP or lower OS.

If below dialog box appears, please select the recommended way and finish the drive installation.



4

- Select Disc "Le Pan II" to review files in Tablet or transfer documents in between.

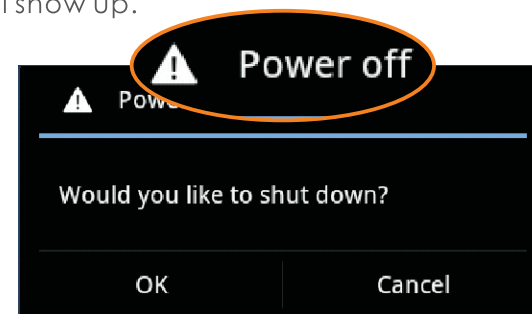


- Disconnect cable when it is finished.
- For more information, please visit: www.lepantab.com.

⑥ Power off your Tablet



- Press the **Power** button for seconds, below dialog box will show up.



- Select OK to power off your Tablet.

5

Le Pan

Le Pan II Quick Start Guide For Android™ OS



Hotline: 1-855-537-2672
More Support at: www.lepantab.com

封面

250G双铜，过亚胶，四色双面印刷，两边向中间对折

FCC RF Exposure Information and Statement

The SAR limit of USA (FCC) is 1.6 W/kg averaged over one gram of tissue. Device types TC979 (FCC ID: ZDRTC979) has also been tested against this SAR limit. The highest SAR value reported under this standard during product certification for use at when properly worn on the body is 0.527W/kg. This device was tested for typical body-worn operations with the back of the handset kept 0cm from the body. To maintain compliance with FCC RF exposure requirements, use accessories that maintain a 0 mm separation distance between the user's body and the back of the handset. The use of belt clips, holsters and similar accessories should not contain metallic components in its assembly. The use of accessories that do not satisfy these requirements may not comply with FCC RF exposure requirements, and should be avoided.

FCC WARNING

This device complies with Part 15 of the FCC Rules. Operation is subject to the following two conditions:

- (1) this device may not cause harmful interference, and
- (2) this device must accept any interference received, including interference that may cause undesired operation.

NOTE 1: This equipment has been tested and found to comply with the limits for a Class B digital device, pursuant to part 15 of the FCC Rules. These limits are designed to provide reasonable protection against harmful interference in a residential installation. This equipment generates, uses and can radiate radio frequency energy and, if not installed and used in accordance with the instructions, may cause harmful interference to radio communications. However, there is no guarantee that interference will not occur in a particular installation. If this equipment does cause harmful interference to radio or television reception, which can be determined by turning the equipment off and on, the user is encouraged to try to correct the interference by one or more of the following measures:

- Reorient or relocate the receiving antenna.
- Increase the separation between the equipment and receiver.
- Connect the equipment into an outlet on a circuit different from that to which the receiver is connected.
- Consult the dealer or an experienced radio/TV technician for help.

NOTE 2: Any changes or modifications to this unit not expressly approved by the party responsible for compliance could void the user's authority to operate the equipment.