

## Differences Description

We Buddi Limited state:

**Product:** Smart ID  
S10-BUD-A-TEEU-SID,  
**Model Name:** S10-BUD-A-TEEU-SID14.1,  
S10-BUD-A-TEEU-SIE14.1, 7630001, 7630006,  
7630007  
**FCC ID:** ZDLST9

The electrical circuit design, layout, components used and internal wiring for above models are identical, Only different in Model Name, Appearance (non-fingerprint or fingerprint), SIM(single SIM or dual SIM) and Hardware Version Number.

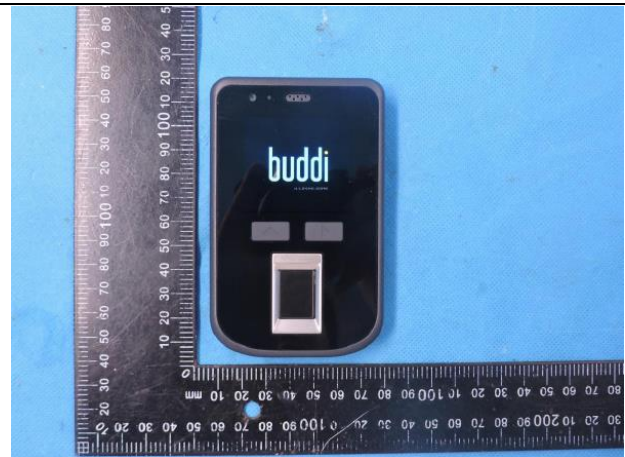
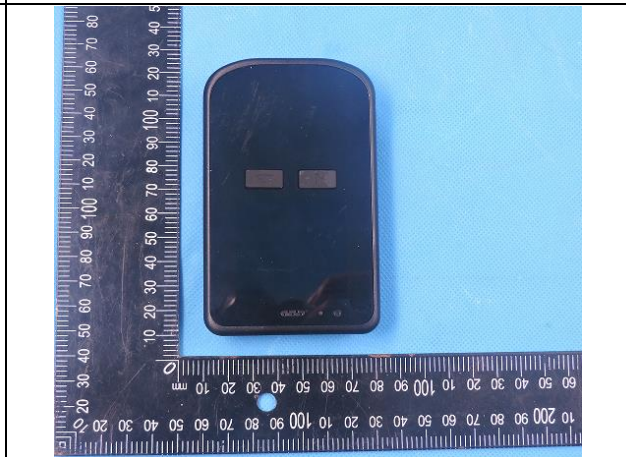
Model Number: S10-BUD-A-TEEU-SID, 7630001 has non-fingerprint and support single SIM;

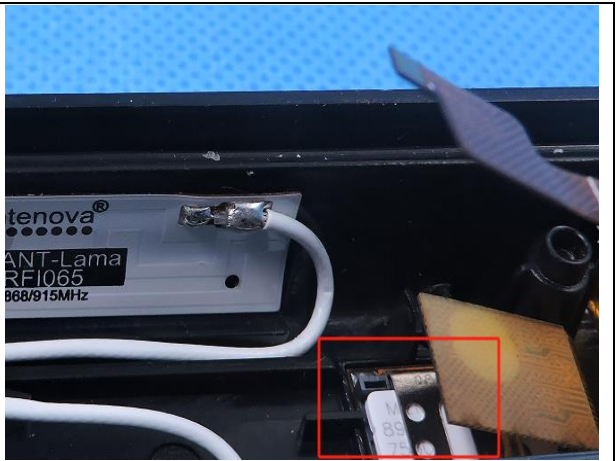
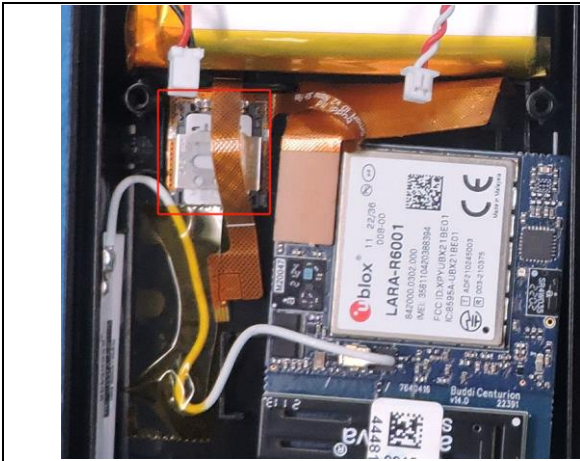
Model Number: S10-BUD-A-TEEU-SID14.1, 7630006 has fingerprint, change the Hardware Version Number to v14.1 and support dual SIM;

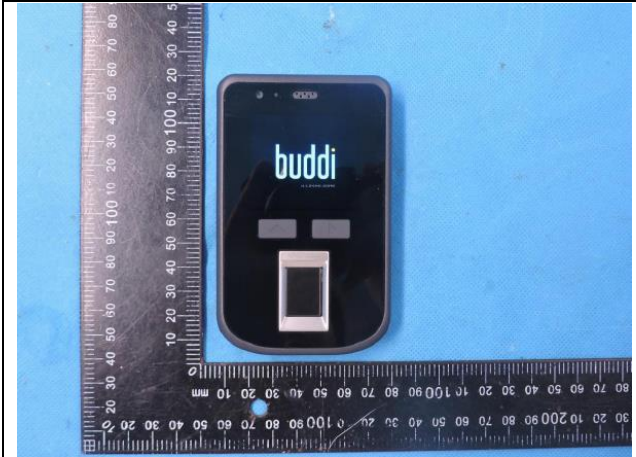
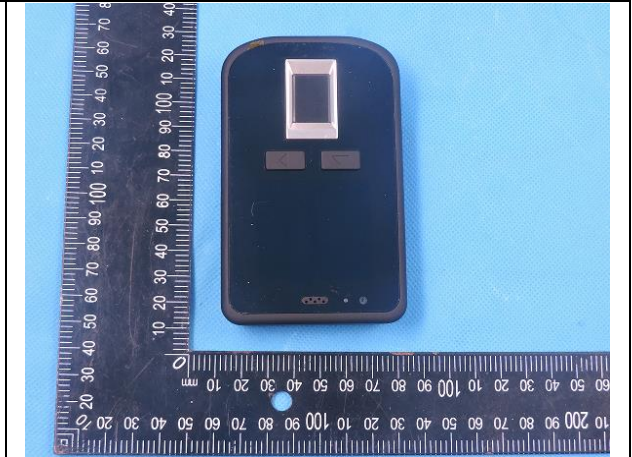
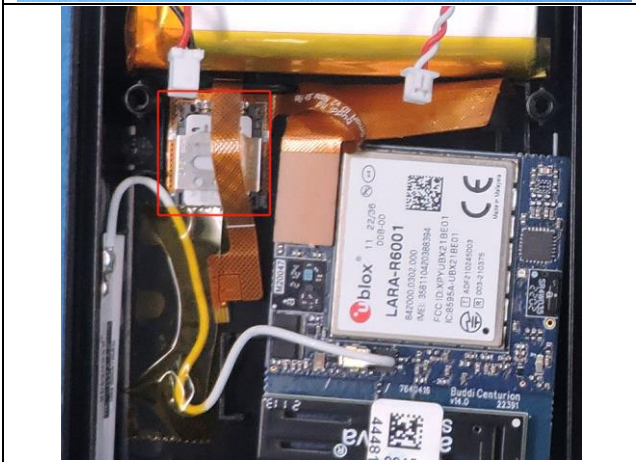
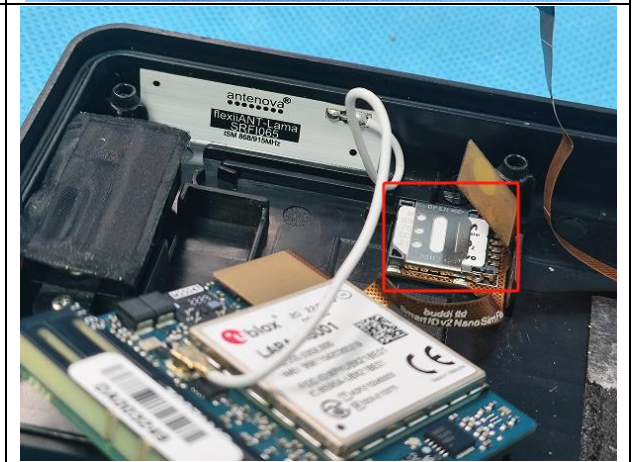
Model Number: S10-BUD-A-TEEU-SIE14.1, 7630007 has non-fingerprint, change the Hardware Version Number to v14.1 and support dual SIM.

the wireless circuit and antenna have not changed, have been updated reports and EUT photo for these change.

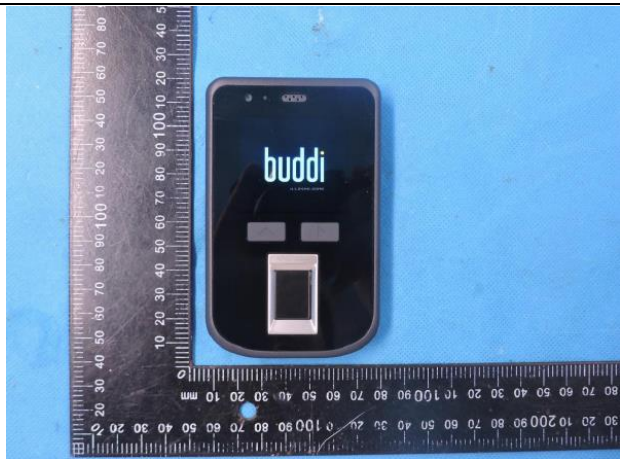


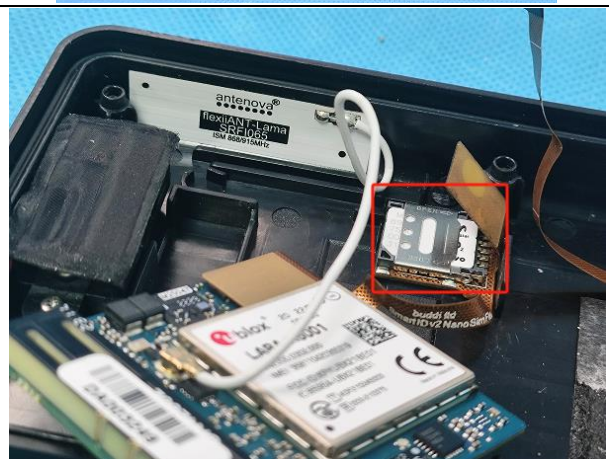
As follows changes:

original device	new device
Model Name: S10-BUD-A-TEEU-SID, 7630001	Model Name: S10-BUD-A-TEEU-SID, 7630001
 A black rectangular device with a screen displaying the 'buddi' logo and a small rectangular cutout at the bottom. It is placed next to a ruler for scale.	 A black rectangular device with two small rectangular cutouts at the bottom. It is placed next to a ruler for scale.



original device	new device
Model Name: S10-BUD-A-TEEU-SID, 7630001	Model Name: S10-BUD-A-TEEU-SID14.1, 7630006
	
	



original device	new device
Model Name: S10-BUD-A-TEEU-SID, 7630001	Model Name: S10-BUD-A-TEEU-SIE14.1, 7630007
	
	

Signature



Name: Brad Buike

Title: Head of Product Engineering

E-mail: brad.buike@buddi.co.uk

Company: Buddi Limited