

SAR Distribution Plots

Appendix for the Test Report

Dosimetric Assessment of the Portable Device Smart Tag from buddi Limited

(FCC ID ZDLST2)

August 08, 2016

IMST GmbH
Carl-Friedrich-Gauß-Str. 2 - 4
47475 Kamp-Lintfort
Germany

Customer
Element Materials Technology Warwick Ltd
Unit 1, Pendle Place, Skelmersdale
West Lancashire WN8 9PN
United Kingdom

The test results only relate to the items tested.

This report shall not be reproduced except in full without the written approval of the testing laboratory.

1 SAR Distribution Plots

Test Laboratory: IMST GmbH, DASY Yellow (II); File Name: [SmartTag_416_y_gprs850_fm_back.da4](#)

DUT: Buddi; Type: Smart Tag; Serial: 353162072671416
Program Name: GPRS850 (Class 12)

Communication System: GPRS 850; Frequency: 836.6 MHz; Duty Cycle: 1:2
Medium parameters used: $f = 836.6$ MHz; $\sigma = 0.99$ mho/m; $\epsilon_r = 53.3$; $\rho = 1000$ kg/m³
Phantom section: Flat Section

DASY4 Configuration:

- Probe: ET3DV6R - SN1579; ConvF(6.4, 6.4, 6.4); Calibrated: 2/23/2016
- Sensor-Surface: 4mm (Mechanical Surface Detection)
- Electronics: DAE3 Sn335; Calibrated: 2/16/2016
- Phantom: SAM Sugar 1341; Type: QD 000 P40 CB; Serial: TP-1341
- Measurement SW: DASY4, V4.7 Build 80; Postprocessing SW: SEMCAD, V1.8 Build 186

Body/Area Scan (8x9x1): Measurement grid: dx=15mm, dy=15mm

Maximum value of SAR (measured) = 0.152 mW/g

Body/Zoom Scan (7x7x7)/Cube 0: Measurement grid: dx=5mm, dy=5mm, dz=5mm

Reference Value = 11.8 V/m; Power Drift = -0.107 dB

Peak SAR (extrapolated) = 0.173 W/kg

SAR(1 g) = 0.135 mW/g; SAR(10 g) = 0.097 mW/g

Maximum value of SAR (measured) = 0.144 mW/g

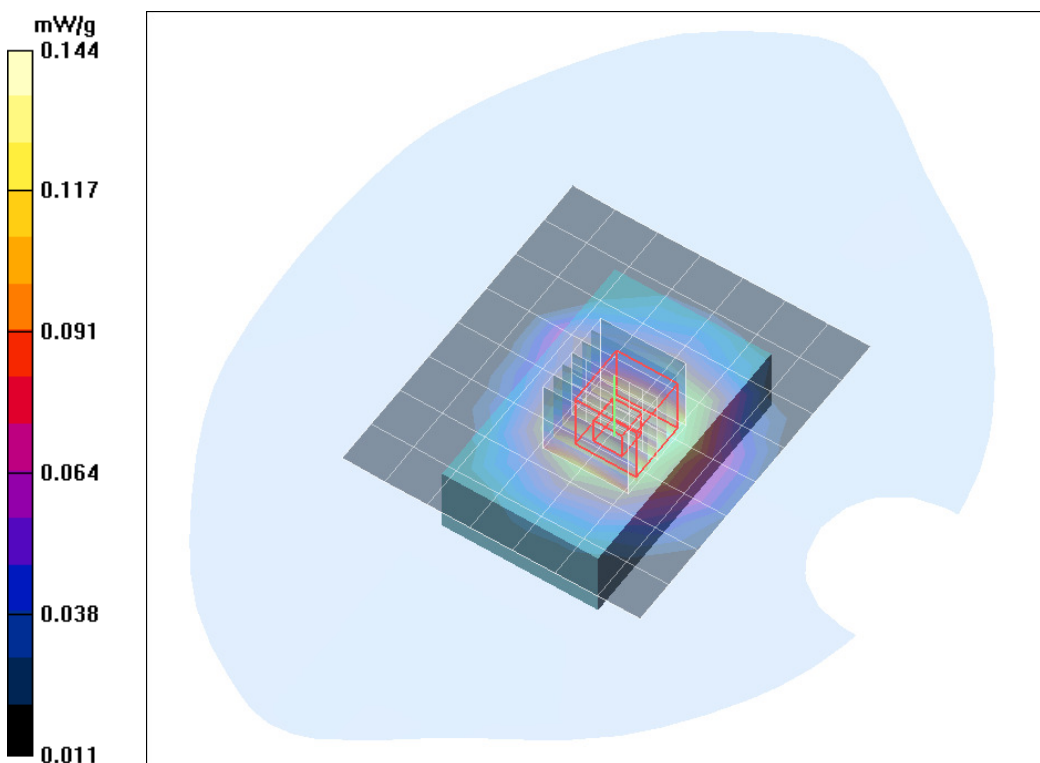


Fig. 1: SAR distribution for GPRS 850 (4TX), channel 190, configuration 1, back side, 0 mm distance (May 11, 2016)

Test Laboratory: IMST GmbH, DASY Yellow (II); File Name:
[SmartTag_416_y_gprs850_fm_back_bat.da4](#)

DUT: Buddi; Type: Smart Tag; Serial: 353162072671416
Program Name: GPRS850 (Class 12)

Communication System: GPRS 850; Frequency: 836.6 MHz; Duty Cycle: 1:2
Medium parameters used: $f = 836.6$ MHz; $\sigma = 0.99$ mho/m; $\epsilon_r = 53.3$; $\rho = 1000$ kg/m³
Phantom section: Flat Section

DASY4 Configuration:

- Probe: ET3DV6R - SN1579; ConvF(6.4, 6.4, 6.4); Calibrated: 2/23/2016
- Sensor-Surface: 4mm (Mechanical Surface Detection)
- Electronics: DAE3 Sn335; Calibrated: 2/16/2016
- Phantom: SAM Sugar 1341; Type: QD 000 P40 CB; Serial: TP-1341
- Measurement SW: DASY4, V4.7 Build 80; Postprocessing SW: SEMCAD, V1.8 Build 186

Body/Area Scan (7x9x1): Measurement grid: dx=15mm, dy=15mm

Maximum value of SAR (measured) = 0.717 mW/g

Body/Zoom Scan (7x7x7)/Cube 0: Measurement grid: dx=5mm, dy=5mm, dz=5mm

Reference Value = 26.9 V/m; Power Drift = -0.040 dB

Peak SAR (extrapolated) = 0.995 W/kg

SAR(1 g) = 0.674 mW/g; SAR(10 g) = 0.460 mW/g

Maximum value of SAR (measured) = 0.718 mW/g

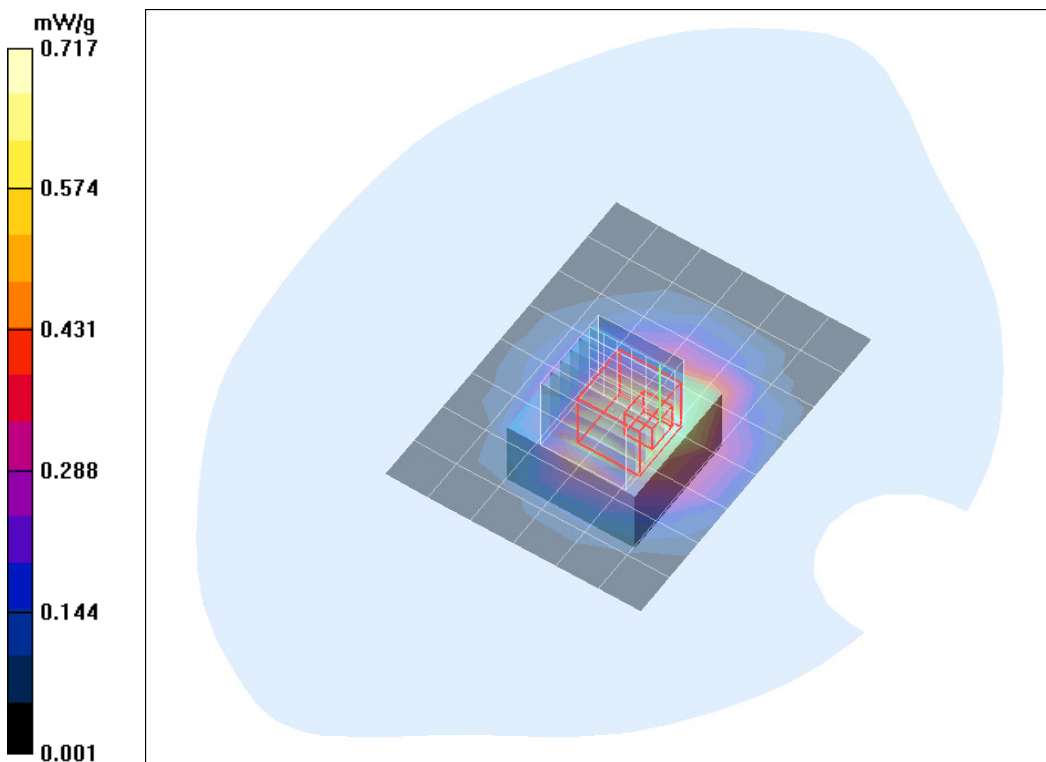


Fig. 2: SAR distribution for GPRS 850 (4TX), channel 190, configuration 2, back side, 0 mm distance
(May 11, 2016)

Test Laboratory: IMST GmbH, DASY Yellow (II); File Name:
[SmartTag_416_y_gprs850_fm_back_OBC.da4](#)

DUT: Buddi; Type: Smart Tag; Serial: 353162072671416
Program Name: GPRS850 (Class 12)

Communication System: GPRS 850; Frequency: 836.6 MHz; Duty Cycle: 1:2
Medium parameters used: $f = 836.6$ MHz; $\sigma = 0.99$ mho/m; $\epsilon_r = 53.3$; $\rho = 1000$ kg/m³
Phantom section: Flat Section

DASY4 Configuration:

- Probe: ET3DV6R - SN1579; ConvF(6.4, 6.4, 6.4); Calibrated: 2/23/2016
- Sensor-Surface: 4mm (Mechanical Surface Detection)
- Electronics: DAE3 Sn335; Calibrated: 2/16/2016
- Phantom: SAM Sugar 1341; Type: QD 000 P40 CB; Serial: TP-1341
- Measurement SW: DASY4, V4.7 Build 80; Postprocessing SW: SEMCAD, V1.8 Build 186

Body/Area Scan (8x9x1): Measurement grid: dx=15mm, dy=15mm

Maximum value of SAR (measured) = 0.116 mW/g

Body/Zoom Scan (7x7x7)/Cube 0: Measurement grid: dx=5mm, dy=5mm, dz=5mm

Reference Value = 8.05 V/m; Power Drift = -0.171 dB

Peak SAR (extrapolated) = 0.496 W/kg

SAR(1 g) = 0.090 mW/g; SAR(10 g) = 0.037 mW/g

Maximum value of SAR (measured) = 0.100 mW/g

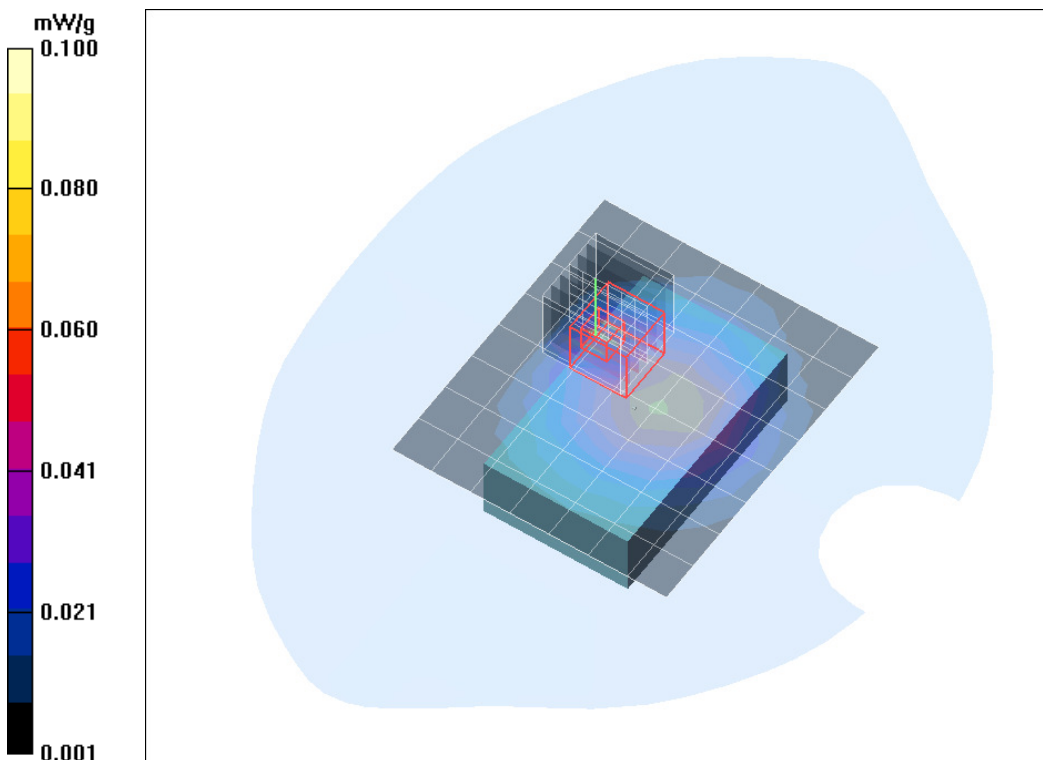


Fig. 3: SAR distribution for GPRS 850 (4TX), channel 190, configuration 3, back side, 0 mm distance
(May 11, 2016)

Test Laboratory: IMST GmbH, DASY Yellow (II); File Name:
[SmartTag_416_y_gprs850_fl_back_bat.da4](#)

DUT: Buddi; Type: Smart Tag; Serial: 353162072671416
Program Name: GPRS850 (Class 12)

Communication System: GPRS 850; Frequency: 824.2 MHz; Duty Cycle: 1:2
Medium parameters used: $f = 824.2$ MHz; $\sigma = 0.98$ mho/m; $\epsilon_r = 53.4$; $\rho = 1000$ kg/m³
Phantom section: Flat Section

DASY4 Configuration:

- Probe: ET3DV6R - SN1579; ConvF(6.4, 6.4, 6.4); Calibrated: 2/23/2016
- Sensor-Surface: 4mm (Mechanical Surface Detection)
- Electronics: DAE3 Sn335; Calibrated: 2/16/2016
- Phantom: SAM Sugar 1341; Type: QD 000 P40 CB; Serial: TP-1341
- Measurement SW: DASY4, V4.7 Build 80; Postprocessing SW: SEMCAD, V1.8 Build 186

Body/Area Scan (7x8x1): Measurement grid: dx=15mm, dy=15mm

Maximum value of SAR (measured) = 1.02 mW/g

Body/Zoom Scan (7x7x7)/Cube 0: Measurement grid: dx=5mm, dy=5mm, dz=5mm

Reference Value = 30.6 V/m; Power Drift = 0.199 dB

Peak SAR (extrapolated) = 1.57 W/kg

SAR(1 g) = 0.999 mW/g; SAR(10 g) = 0.655 mW/g

Maximum value of SAR (measured) = 1.08 mW/g

Body/Zoom Scan (7x7x7)/Cube 1: Measurement grid: dx=5mm, dy=5mm, dz=5mm

Reference Value = 30.6 V/m; Power Drift = 0.199 dB

Peak SAR (extrapolated) = 1.38 W/kg

SAR(1 g) = 1.02 mW/g; SAR(10 g) = 0.711 mW/g

Maximum value of SAR (measured) = 1.11 mW/g

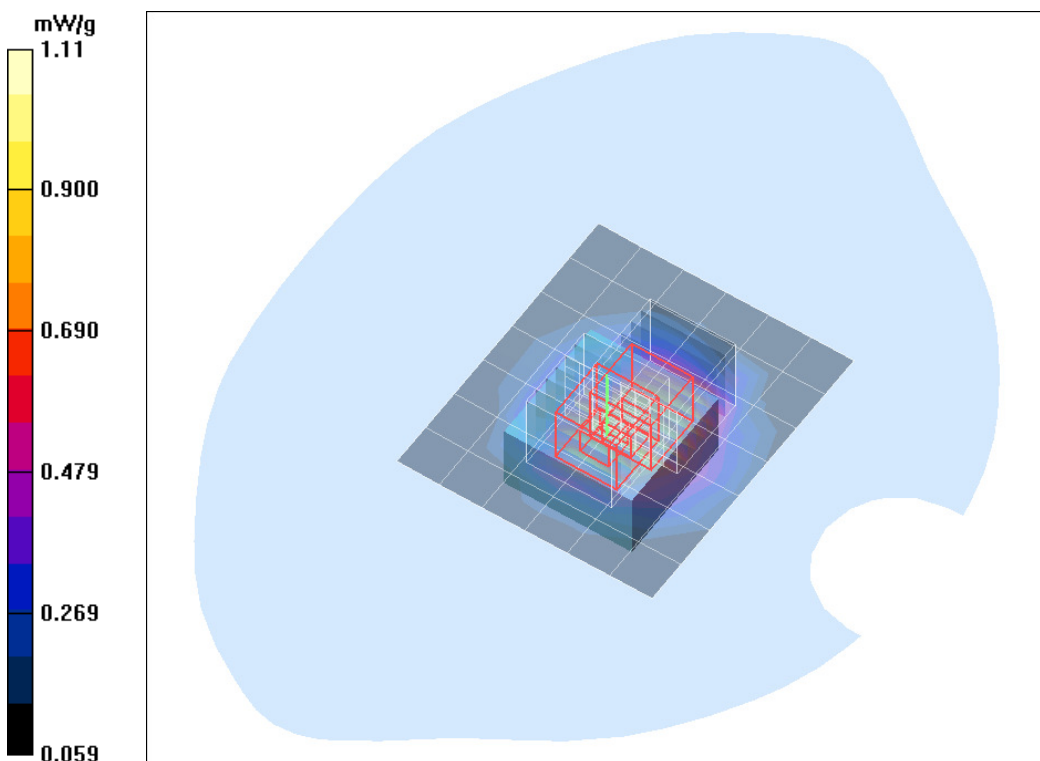


Fig. 4: SAR distribution for GPRS 850 (4TX), channel 128, configuration 2, back side, 0 mm distance (May 11, 2016)

Test Laboratory: IMST GmbH, DASY Yellow (II); File Name:
[SmartTag_416_y_gprs850_fh_back_bat.da4](#)

DUT: Buddi; Type: Smart Tag; Serial: 353162072671416
Program Name: GPRS850 (Class 12)

Communication System: GPRS 850; Frequency: 848.8 MHz; Duty Cycle: 1:2
Medium parameters used: $f = 848.8$ MHz; $\sigma = 1$ mho/m; $\epsilon_r = 53.2$; $\rho = 1000$ kg/m³
Phantom section: Flat Section

DASY4 Configuration:

- Probe: ET3DV6R - SN1579; ConvF(6.4, 6.4, 6.4); Calibrated: 2/23/2016
- Sensor-Surface: 4mm (Mechanical Surface Detection)
- Electronics: DAE3 Sn335; Calibrated: 2/16/2016
- Phantom: SAM Sugar 1341; Type: QD 000 P40 CB; Serial: TP-1341
- Measurement SW: DASY4, V4.7 Build 80; Postprocessing SW: SEMCAD, V1.8 Build 186

Body/Area Scan (7x8x1): Measurement grid: dx=15mm, dy=15mm

Maximum value of SAR (measured) = 0.617 mW/g

Body/Zoom Scan (7x7x7)/Cube 0: Measurement grid: dx=5mm, dy=5mm, dz=5mm

Reference Value = 24.8 V/m; Power Drift = -0.105 dB

Peak SAR (extrapolated) = 0.893 W/kg

SAR(1 g) = 0.607 mW/g; SAR(10 g) = 0.419 mW/g

Maximum value of SAR (measured) = 0.654 mW/g

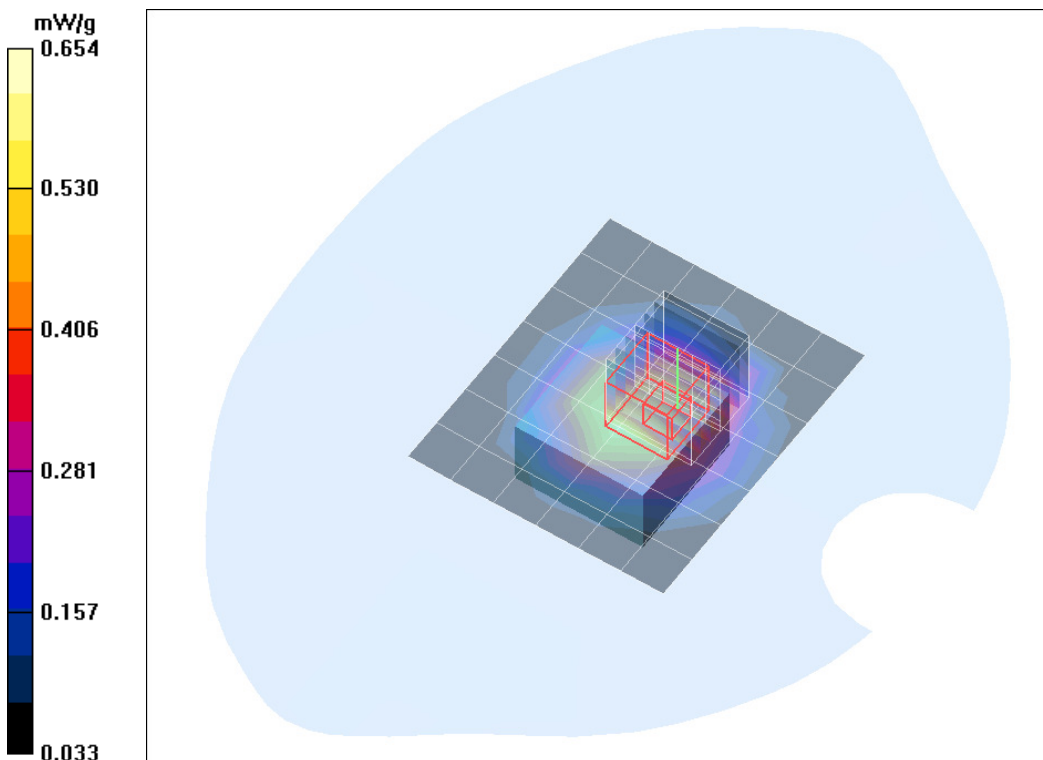


Fig. 5: SAR distribution for GPRS 850 (4TX), channel 251, configuration 2, back side, 0 mm distance (May 11, 2016)

Test Laboratory: IMST GmbH, DASY Yellow (II); File Name:
[SmartTag_416_y_gprs1900_4TX_fm_back.da4](#)

DUT: Buddi; Type: Smart Tag; Serial: 353162072671416
Program Name: GPRS1900 (Class 12)

Communication System: GPRS 1900; Frequency: 1880 MHz; Duty Cycle: 1:2
Medium parameters used: $f = 1880$ MHz; $\sigma = 1.55$ mho/m; $\epsilon_r = 51.3$; $\rho = 1000$ kg/m³
Phantom section: Flat Section

DASY4 Configuration:

- Probe: ET3DV6R - SN1579; ConvF(4.63, 4.63, 4.63); Calibrated: 2/23/2016
- Sensor-Surface: 4mm (Mechanical Surface Detection)
- Electronics: DAE3 Sn335; Calibrated: 2/16/2016
- Phantom: SAM 1340; Type: QD 000 P40 CB; Serial: TP-1340
- Measurement SW: DASY4, V4.7 Build 80; Postprocessing SW: SEMCAD, V1.8 Build 186

Body/Area Scan (8x9x1): Measurement grid: dx=15mm, dy=15mm

Maximum value of SAR (measured) = 3.30 mW/g

Body/Zoom Scan (7x7x7)/Cube 0: Measurement grid: dx=5mm, dy=5mm, dz=5mm

Reference Value = 52.8 V/m; Power Drift = -0.137 dB

Peak SAR (extrapolated) = 4.06 W/kg

SAR(1 g) = 3.27 mW/g; SAR(10 g) = 2.03 mW/g

Maximum value of SAR (measured) = 3.55 mW/g

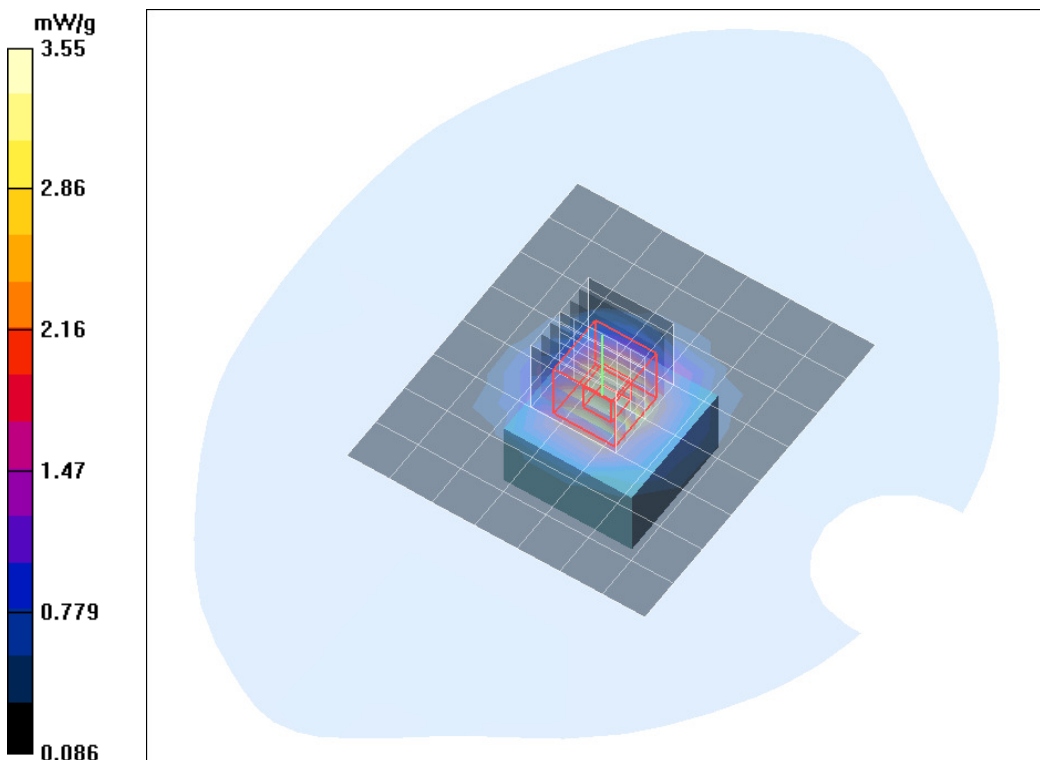


Fig. 6: SAR distribution for GPRS 1900 (4TX), channel 661, configuration 1, back side, 0 mm distance (May 24, 2016)

Test Laboratory: IMST GmbH, DASY Yellow (II); File Name:
[SmartTag 416 y gprs1900 4TX fm back bat.da4](#)

DUT: Buddi; Type: Smart Tag; Serial: 353162072671416
Program Name: GPRS1900 (Class 12)

Communication System: GPRS 1900; Frequency: 1880 MHz; Duty Cycle: 1:2
Medium parameters used: $f = 1880$ MHz; $\sigma = 1.55$ mho/m; $\epsilon_r = 51.3$; $\rho = 1000$ kg/m³
Phantom section: Flat Section

DASY4 Configuration:

- Probe: ET3DV6R - SN1579; ConvF(4.63, 4.63, 4.63); Calibrated: 2/23/2016
- Sensor-Surface: 4mm (Mechanical Surface Detection)
- Electronics: DAE3 Sn335; Calibrated: 2/16/2016
- Phantom: SAM 1340; Type: QD 000 P40 CB; Serial: TP-1340
- Measurement SW: DASY4, V4.7 Build 80; Postprocessing SW: SEMCAD, V1.8 Build 186

Body/Area Scan (7x8x1): Measurement grid: dx=15mm, dy=15mm

Maximum value of SAR (measured) = 1.51 mW/g

Body/Zoom Scan (7x7x7)/Cube 0: Measurement grid: dx=5mm, dy=5mm, dz=5mm

Reference Value = 35.8 V/m; Power Drift = -0.180 dB

Peak SAR (extrapolated) = 2.19 W/kg

SAR(1 g) = 1.65 mW/g; SAR(10 g) = 1.04 mW/g

Maximum value of SAR (measured) = 1.81 mW/g

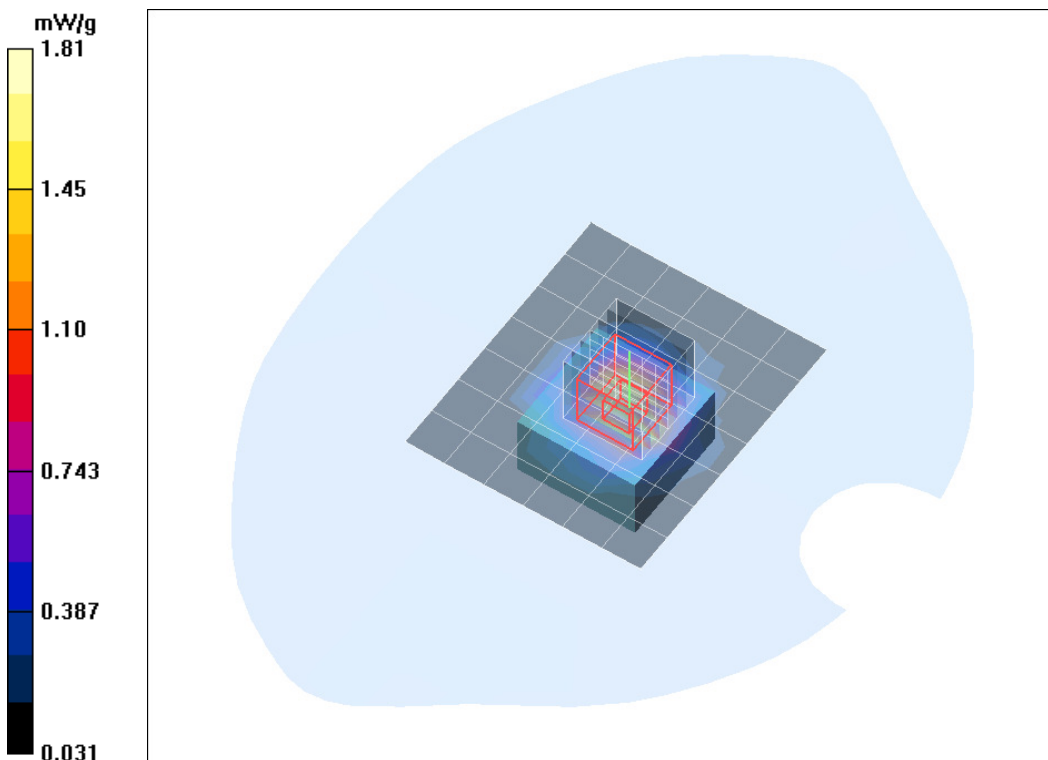


Fig. 7: SAR distribution for GPRS 1900 (4TX), channel 661, configuration 2, back side, 0 mm distance (May 24, 2016)

Test Laboratory: IMST GmbH, DASY Yellow (II); File Name:
[SmartTag_416_y_gprs1900_4TX_fm_back_OBC.da4](#)

DUT: Buddi; Type: Smart Tag; Serial: 353162072671416
Program Name: GPRS1900 (Class 12)

Communication System: GPRS 1900; Frequency: 1880 MHz; Duty Cycle: 1:2
Medium parameters used: $f = 1880$ MHz; $\sigma = 1.55$ mho/m; $\epsilon_r = 51.3$; $\rho = 1000$ kg/m³
Phantom section: Flat Section

DASY4 Configuration:

- Probe: ET3DV6R - SN1579; ConvF(4.63, 4.63, 4.63); Calibrated: 2/23/2016
- Sensor-Surface: 4mm (Mechanical Surface Detection)
- Electronics: DAE3 Sn335; Calibrated: 2/16/2016
- Phantom: SAM 1340; Type: QD 000 P40 CB; Serial: TP-1340
- Measurement SW: DASY4, V4.7 Build 80; Postprocessing SW: SEMCAD, V1.8 Build 186

Body/Area Scan (8x9x1): Measurement grid: dx=15mm, dy=15mm

Maximum value of SAR (measured) = 0.571 mW/g

Body/Zoom Scan (7x7x7)/Cube 0: Measurement grid: dx=5mm, dy=5mm, dz=5mm

Reference Value = 16.6 V/m; Power Drift = -0.176 dB

Peak SAR (extrapolated) = 1.53 W/kg

SAR(1 g) = 0.598 mW/g; SAR(10 g) = 0.324 mW/g

Maximum value of SAR (measured) = 0.673 mW/g

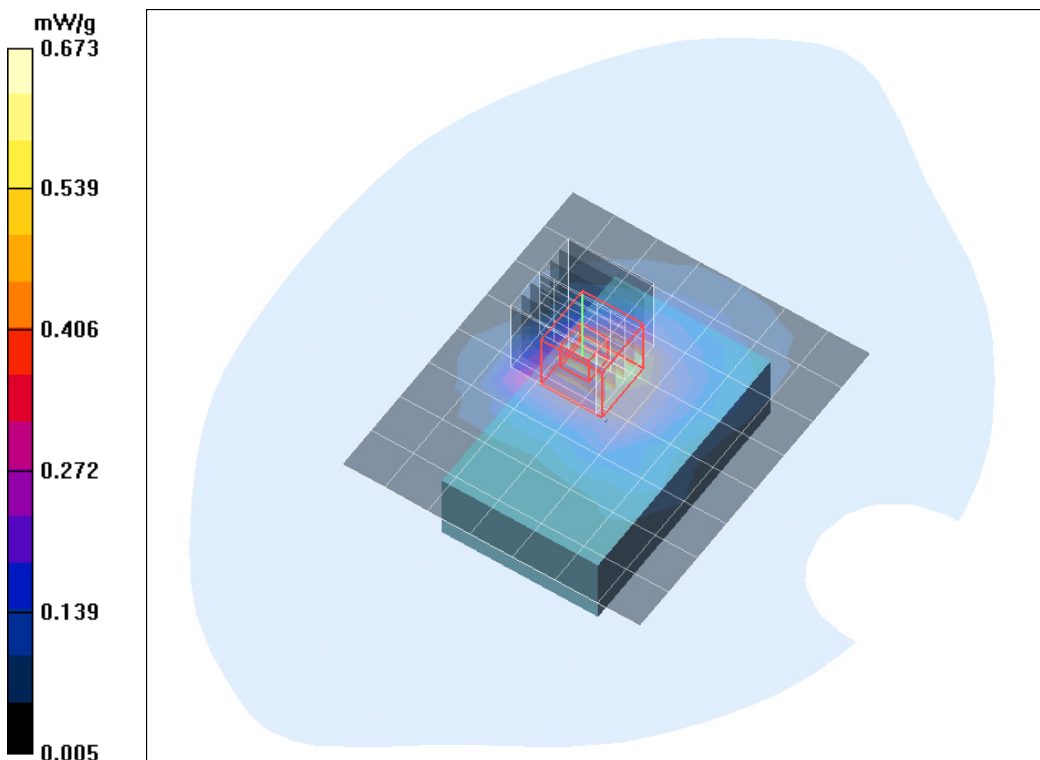


Fig. 8: SAR distribution for GPRS 1900 (4TX), channel 661, configuration 3, back side, 0 mm distance (May 24, 2016)

Test Laboratory: IMST GmbH, DASY Yellow (II); File Name:
[SmartTag_416_y_gprs1900_4TX_fl_back.da4](#)

DUT: Buddi; Type: Smart Tag; Serial: 353162072671416
Program Name: GPRS1900 (Class 12)

Communication System: GPRS 1900; Frequency: 1850.2 MHz; Duty Cycle: 1:2
Medium parameters used: $f = 1850.2$ MHz; $\sigma = 1.52$ mho/m; $\epsilon_r = 51.4$; $\rho = 1000$ kg/m³
Phantom section: Flat Section

DASY4 Configuration:

- Probe: ET3DV6R - SN1579; ConvF(4.63, 4.63, 4.63); Calibrated: 2/23/2016
- Sensor-Surface: 4mm (Mechanical Surface Detection)
- Electronics: DAE3 Sn335; Calibrated: 2/16/2016
- Phantom: SAM 1340; Type: QD 000 P40 CB; Serial: TP-1340
- Measurement SW: DASY4, V4.7 Build 80; Postprocessing SW: SEMCAD, V1.8 Build 186

Body/Area Scan (7x8x1): Measurement grid: dx=15mm, dy=15mm

Maximum value of SAR (measured) = 3.47 mW/g

Body/Zoom Scan (7x7x7)/Cube 0: Measurement grid: dx=5mm, dy=5mm, dz=5mm

Reference Value = 51.0 V/m; Power Drift = -0.018 dB

Peak SAR (extrapolated) = 4.19 W/kg

SAR(1 g) = 3.42 mW/g; SAR(10 g) = 2.14 mW/g

Maximum value of SAR (measured) = 3.69 mW/g

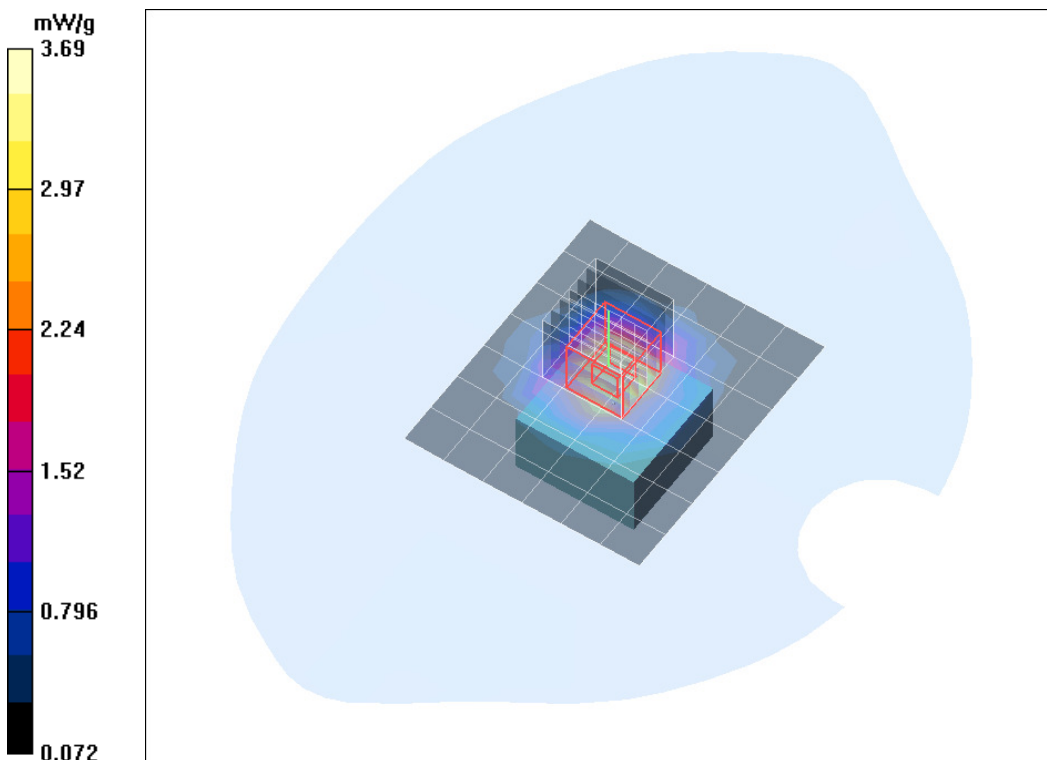


Fig. 9: SAR distribution for GPRS 1900 (4TX), channel 512, configuration 1, back side, 0 mm distance (May 24, 2016)

Test Laboratory: IMST GmbH, DASY Yellow (II); File Name:
[SmartTag_416_y_gprs1900_4TX_fh_back.da4](#)

DUT: Buddi; Type: Smart Tag; Serial: 353162072671416
Program Name: GPRS1900 (Class 12)

Communication System: GPRS 1900; Frequency: 1909.8 MHz; Duty Cycle: 1:2
Medium parameters used: $f = 1909.8$ MHz; $\sigma = 1.58$ mho/m; $\epsilon_r = 51.2$; $\rho = 1000$ kg/m³
Phantom section: Flat Section

DASY4 Configuration:

- Probe: ET3DV6R - SN1579; ConvF(4.63, 4.63, 4.63); Calibrated: 2/23/2016
- Sensor-Surface: 4mm (Mechanical Surface Detection)
- Electronics: DAE3 Sn335; Calibrated: 2/16/2016
- Phantom: SAM 1340; Type: QD 000 P40 CB; Serial: TP-1340
- Measurement SW: DASY4, V4.7 Build 80; Postprocessing SW: SEMCAD, V1.8 Build 186

Body/Area Scan (7x8x1): Measurement grid: dx=15mm, dy=15mm

Maximum value of SAR (measured) = 2.94 mW/g

Body/Zoom Scan (7x7x7)/Cube 0: Measurement grid: dx=5mm, dy=5mm, dz=5mm

Reference Value = 46.3 V/m; Power Drift = -0.087 dB

Peak SAR (extrapolated) = 3.83 W/kg

SAR(1 g) = 3 mW/g; SAR(10 g) = 1.84 mW/g

Maximum value of SAR (measured) = 3.28 mW/g

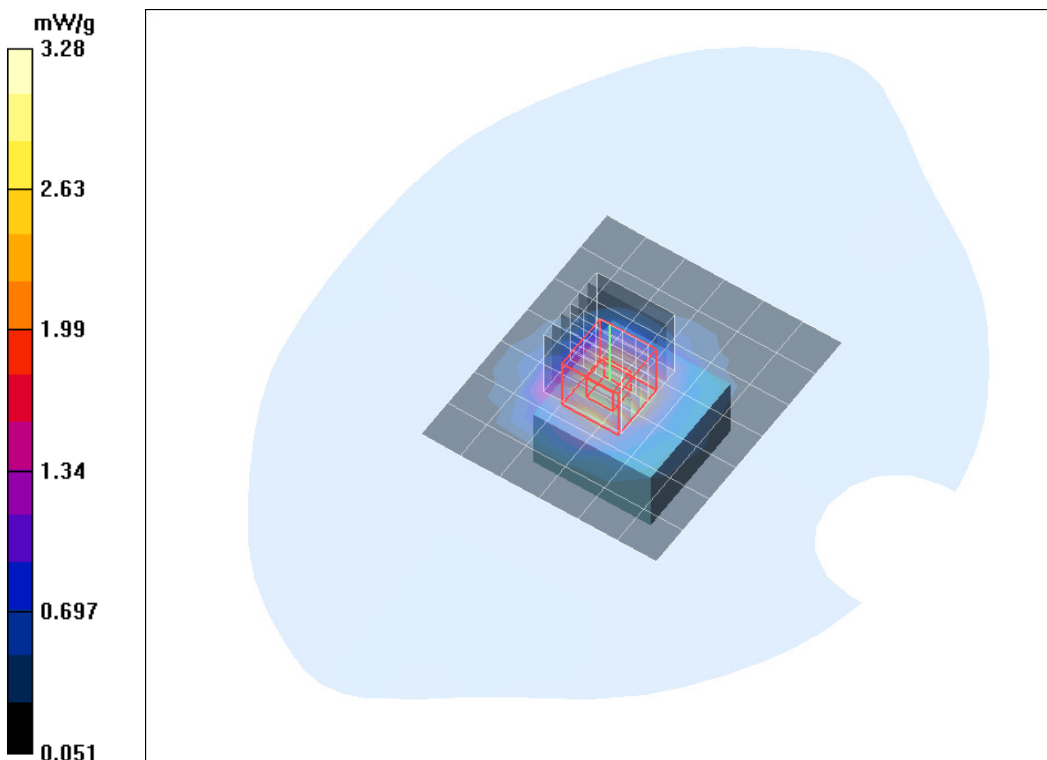


Fig. 10: SAR distribution for GPRS 1900 (4TX), channel 810, configuration 1, back side, 0 mm distance
(May 24, 2016)

Test Laboratory: IMST GmbH, DASY Yellow (II); File Name: [SmartTag_4099_y_wcdma2_fm_back.da4](#)

DUT: Buddi; Type: Smart Tag; Serial: 353162072574099
Program Name: WCDMA 2 (RMC)

Communication System: WCDMA FDD Band II; Frequency: 1880 MHz; Duty Cycle: 1:1
Medium parameters used: $f = 1880$ MHz; $\sigma = 1.55$ mho/m; $\epsilon_r = 51.3$; $\rho = 1000$ kg/m³
Phantom section: Flat Section

DASY4 Configuration:

- Probe: ET3DV6R - SN1579; ConvF(4.63, 4.63, 4.63); Calibrated: 2/23/2016
- Sensor-Surface: 4mm (Mechanical Surface Detection)
- Electronics: DAE3 Sn335; Calibrated: 2/16/2016
- Phantom: SAM 1340; Type: QD 000 P40 CB; Serial: TP-1340
- Measurement SW: DASY4, V4.7 Build 80; Postprocessing SW: SEMCAD, V1.8 Build 186

Body/Area Scan (8x9x1): Measurement grid: dx=15mm, dy=15mm

Maximum value of SAR (measured) = 1.97 mW/g

Body/Zoom Scan (7x7x7)/Cube 0: Measurement grid: dx=5mm, dy=5mm, dz=5mm

Reference Value = 44.1 V/m; Power Drift = -0.105 dB

Peak SAR (extrapolated) = 2.35 W/kg

SAR(1 g) = 1.86 mW/g; SAR(10 g) = 1.15 mW/g

Maximum value of SAR (measured) = 2.02 mW/g

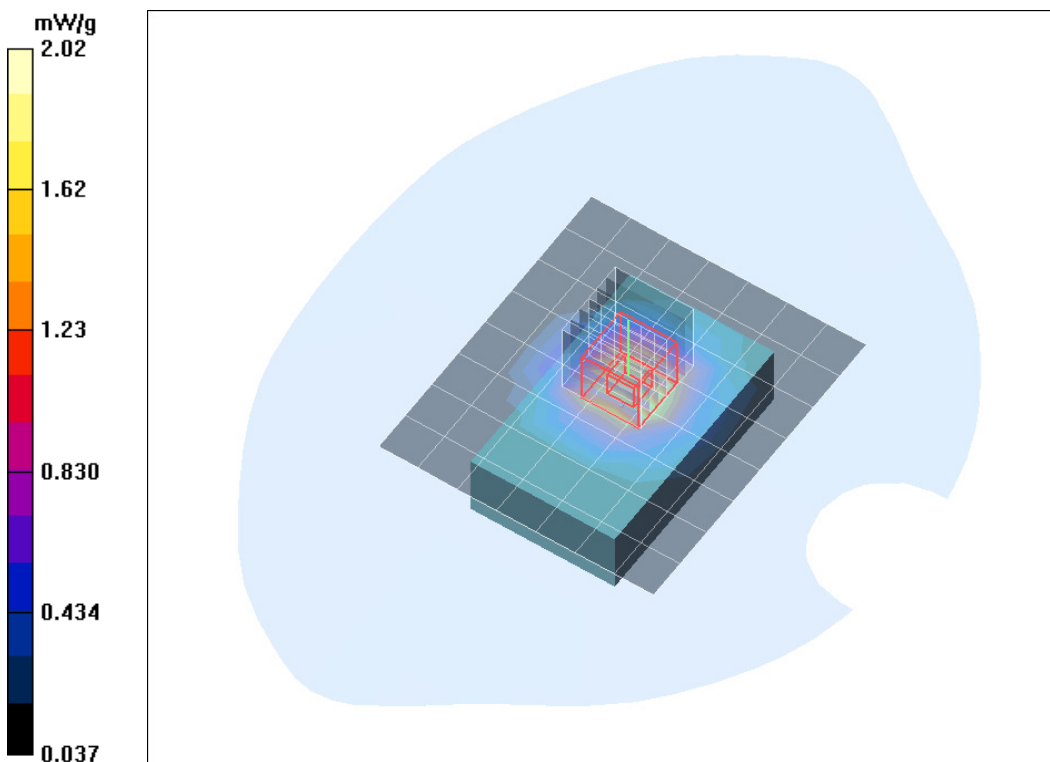


Fig. 11: SAR distribution for WCDMA2, channel 9400, configuration 1, back side, 0 mm distance (May 25, 2016)

Test Laboratory: IMST GmbH, DASY Yellow (II); File Name:
[SmartTag_4099_y_wcdma2_fm_back_bat.da4](#)

DUT: Buddi; Type: Smart Tag; Serial: 353162072574099
Program Name: WCDMA 2 (RMC)

Communication System: WCDMA FDD Band II; Frequency: 1880 MHz; Duty Cycle: 1:1
Medium parameters used: $f = 1880$ MHz; $\sigma = 1.55$ mho/m; $\epsilon_r = 51.3$; $\rho = 1000$ kg/m³
Phantom section: Flat Section

DASY4 Configuration:

- Probe: ET3DV6R - SN1579; ConvF(4.63, 4.63, 4.63); Calibrated: 2/23/2016
- Sensor-Surface: 4mm (Mechanical Surface Detection)
- Electronics: DAE3 Sn335; Calibrated: 2/16/2016
- Phantom: SAM 1340; Type: QD 000 P40 CB; Serial: TP-1340
- Measurement SW: DASY4, V4.7 Build 80; Postprocessing SW: SEMCAD, V1.8 Build 186

Body/Area Scan (8x9x1): Measurement grid: dx=15mm, dy=15mm

Maximum value of SAR (measured) = 1.98 mW/g

Body/Zoom Scan (7x7x7)/Cube 0: Measurement grid: dx=5mm, dy=5mm, dz=5mm

Reference Value = 39.2 V/m; Power Drift = -0.071 dB

Peak SAR (extrapolated) = 3.49 W/kg

SAR(1 g) = 1.9 mW/g; SAR(10 g) = 1.11 mW/g

Maximum value of SAR (measured) = 2.16 mW/g

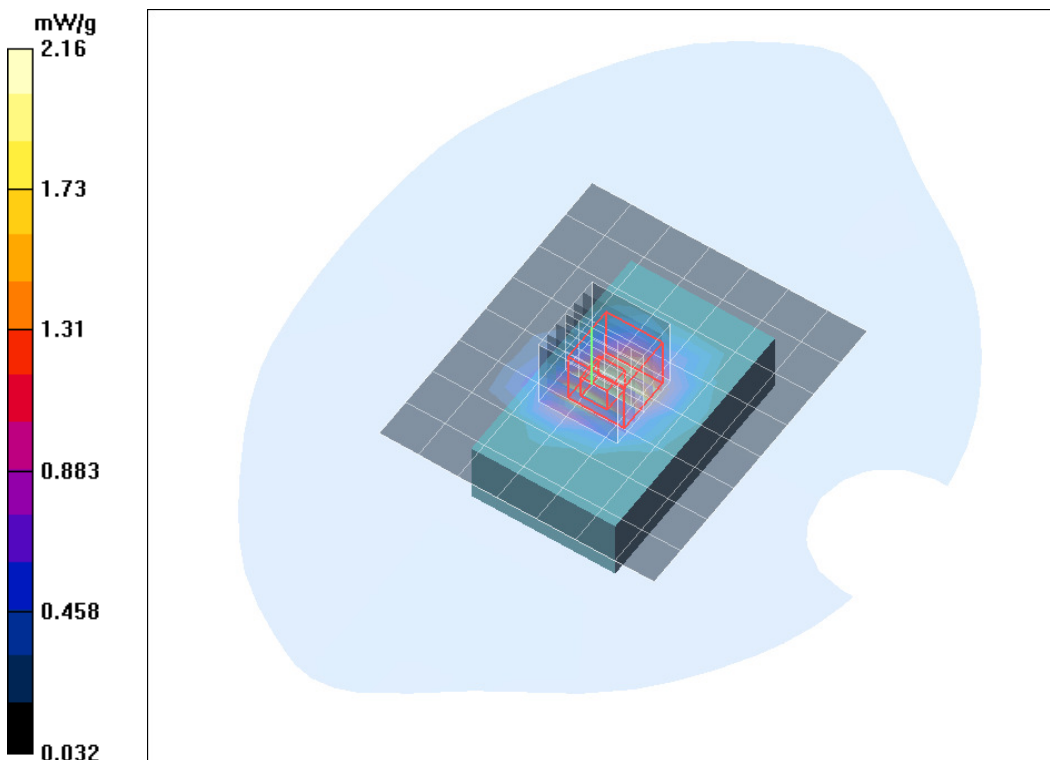


Fig. 12: SAR distribution for WCDMA2, channel 9400, configuration 2, back side, 0 mm distance (May 25, 2016)

Test Laboratory: IMST GmbH, DASY Yellow (II); File Name:
[SmartTag_4099_y_wcdma2_fm_back_OBC.da4](#)

DUT: Buddi; Type: Smart Tag; Serial: 353162072574099
Program Name: WCDMA 2 (RMC)

Communication System: WCDMA FDD Band II; Frequency: 1880 MHz; Duty Cycle: 1:1
Medium parameters used: $f = 1880$ MHz; $\sigma = 1.55$ mho/m; $\epsilon_r = 51.3$; $\rho = 1000$ kg/m³
Phantom section: Flat Section

DASY4 Configuration:

- Probe: ET3DV6R - SN1579; ConvF(4.63, 4.63, 4.63); Calibrated: 2/23/2016
- Sensor-Surface: 4mm (Mechanical Surface Detection)
- Electronics: DAE3 Sn335; Calibrated: 2/16/2016
- Phantom: SAM 1340; Type: QD 000 P40 CB; Serial: TP-1340
- Measurement SW: DASY4, V4.7 Build 80; Postprocessing SW: SEMCAD, V1.8 Build 186

Body/Area Scan (8x9x1): Measurement grid: dx=15mm, dy=15mm

Maximum value of SAR (measured) = 0.461 mW/g

Body/Zoom Scan (7x7x7)/Cube 0: Measurement grid: dx=5mm, dy=5mm, dz=5mm

Reference Value = 13.8 V/m; Power Drift = -0.174 dB

Peak SAR (extrapolated) = 0.950 W/kg

SAR(1 g) = 0.369 mW/g; SAR(10 g) = 0.204 mW/g

Maximum value of SAR (measured) = 0.398 mW/g

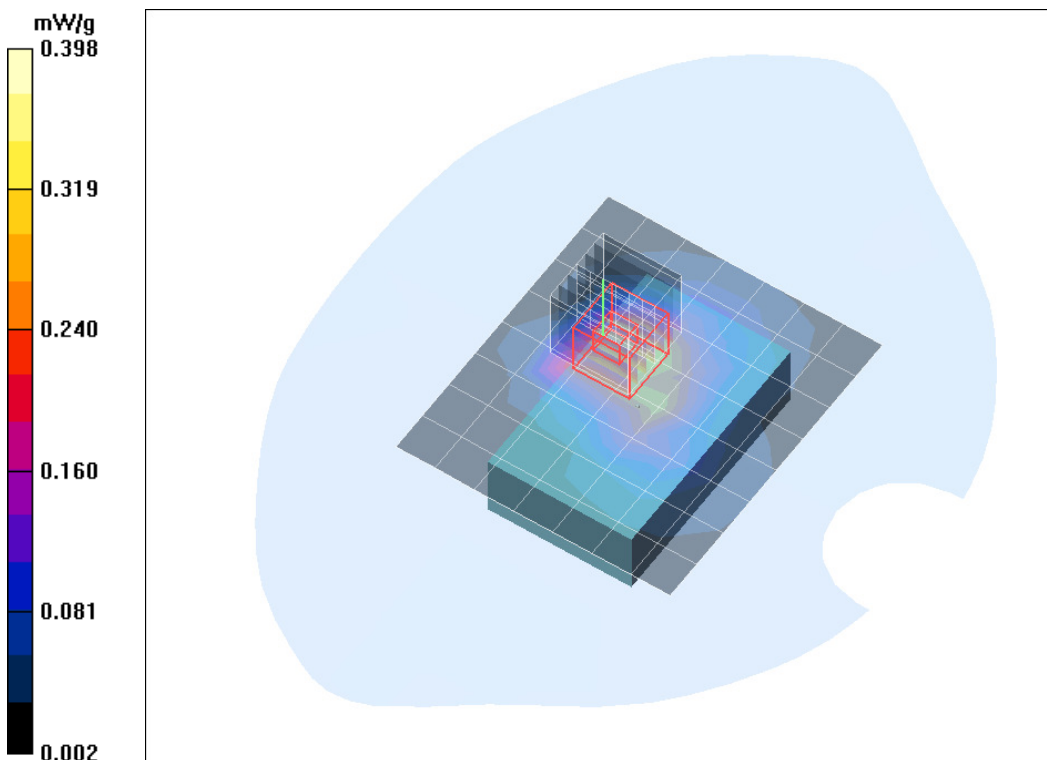


Fig. 13: SAR distribution for WCDMA2, channel 9400, configuration 3, back side, 0 mm distance (May 25, 2016)

Test Laboratory: IMST GmbH, DASY Yellow (II); File Name:
[SmartTag_4099_y_wcdma2_fl_back_bat.da4](#)

DUT: Buddi; Type: Smart Tag; Serial: 353162072574099
Program Name: WCDMA 2 (RMC)

Communication System: WCDMA FDD Band II; Frequency: 1852.4 MHz; Duty Cycle: 1:1
Medium parameters used: $f = 1852.4$ MHz; $\sigma = 1.52$ mho/m; $\epsilon_r = 51.4$; $\rho = 1000$ kg/m³
Phantom section: Flat Section

DASY4 Configuration:

- Probe: ET3DV6R - SN1579; ConvF(4.63, 4.63, 4.63); Calibrated: 2/23/2016
- Sensor-Surface: 4mm (Mechanical Surface Detection)
- Electronics: DAE3 Sn335; Calibrated: 2/16/2016
- Phantom: SAM 1340; Type: QD 000 P40 CB; Serial: TP-1340
- Measurement SW: DASY4, V4.7 Build 80; Postprocessing SW: SEMCAD, V1.8 Build 186

Body/Area Scan (8x9x1): Measurement grid: dx=15mm, dy=15mm

Maximum value of SAR (measured) = 1.37 mW/g

Body/Zoom Scan (7x7x7)/Cube 0: Measurement grid: dx=5mm, dy=5mm, dz=5mm

Reference Value = 33.2 V/m; Power Drift = -0.009 dB

Peak SAR (extrapolated) = 2.51 W/kg

SAR(1 g) = 1.37 mW/g; SAR(10 g) = 0.802 mW/g

Maximum value of SAR (measured) = 1.56 mW/g

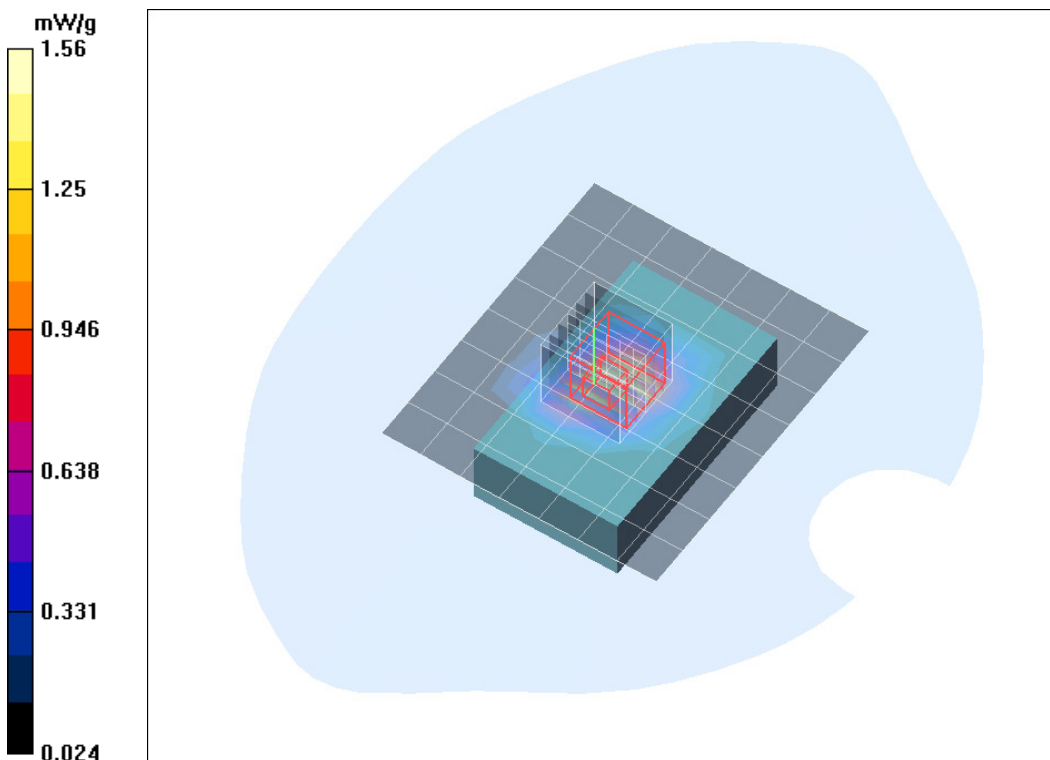


Fig. 14: SAR distribution for WCDMA2, channel 9262, configuration 2, back side, 0 mm distance (May 25, 2016)

Test Laboratory: IMST GmbH, DASY Yellow (II); File Name:
[SmartTag_4099_y_wcdma2_fh_back_bat.da4](#)

DUT: Buddi; Type: Smart Tag; Serial: 353162072574099
Program Name: WCDMA 2 (RMC)

Communication System: WCDMA FDD Band II; Frequency: 1907.6 MHz; Duty Cycle: 1:1
Medium parameters used: $f = 1907.6$ MHz; $\sigma = 1.58$ mho/m; $\epsilon_r = 51.2$; $\rho = 1000$ kg/m³
Phantom section: Flat Section

DASY4 Configuration:

- Probe: ET3DV6R - SN1579; ConvF(4.63, 4.63, 4.63); Calibrated: 2/23/2016
- Sensor-Surface: 4mm (Mechanical Surface Detection)
- Electronics: DAE3 Sn335; Calibrated: 2/16/2016
- Phantom: SAM 1340; Type: QD 000 P40 CB; Serial: TP-1340
- Measurement SW: DASY4, V4.7 Build 80; Postprocessing SW: SEMCAD, V1.8 Build 186

Body/Area Scan (8x9x1): Measurement grid: dx=15mm, dy=15mm

Maximum value of SAR (measured) = 1.23 mW/g

Body/Zoom Scan (7x7x7)/Cube 0: Measurement grid: dx=5mm, dy=5mm, dz=5mm

Reference Value = 32.7 V/m; Power Drift = -0.163 dB

Peak SAR (extrapolated) = 2.21 W/kg

SAR(1 g) = 1.15 mW/g; SAR(10 g) = 0.648 mW/g

Maximum value of SAR (measured) = 1.32 mW/g

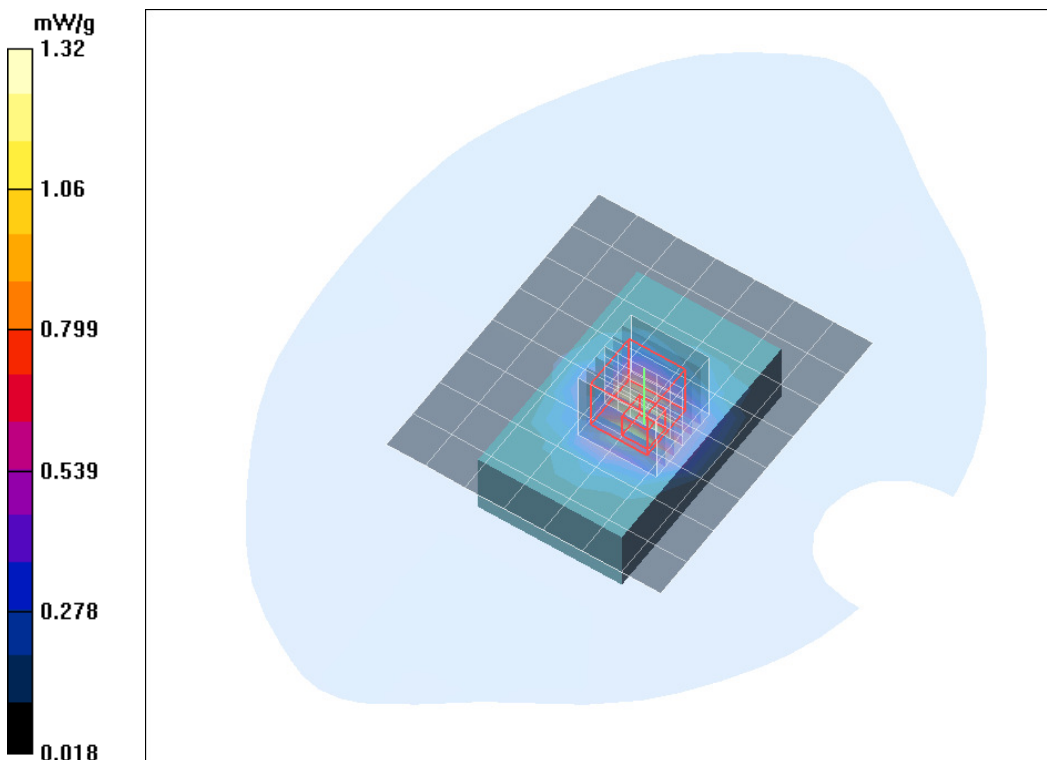


Fig. 15: SAR distribution for WCDMA2, channel 9538, configuration 2, back side, 0 mm distance (May 25, 2016)

Test Laboratory: IMST GmbH, DASY Yellow (II); File Name: [SmartTag_416_y_u5_fm_back.da4](#)

DUT: Buddi; Type: Smart Tag; Serial: 353162072574099
Program Name: WCDMA 5

Communication System: WCDMA (FDD) Band V; Frequency: 836.5 MHz; Duty Cycle: 1:1
Medium parameters used: $f = 836.5$ MHz; $\sigma = 0.99$ mho/m; $\epsilon_r = 53.3$; $\rho = 1000$ kg/m³
Phantom section: Flat Section

DASY4 Configuration:

- Probe: ET3DV6R - SN1579; ConvF(6.4, 6.4, 6.4); Calibrated: 2/23/2016
- Sensor-Surface: 4mm (Mechanical Surface Detection)
- Electronics: DAE3 Sn335; Calibrated: 2/16/2016
- Phantom: SAM Sugar 1341; Type: QD 000 P40 CB; Serial: TP-1341
- Measurement SW: DASY4, V4.7 Build 80; Postprocessing SW: SEMCAD, V1.8 Build 186

Body/Area Scan (8x9x1): Measurement grid: dx=15mm, dy=15mm

Maximum value of SAR (measured) = 0.441 mW/g

Body/Zoom Scan (7x7x7)/Cube 0: Measurement grid: dx=5mm, dy=5mm, dz=5mm

Reference Value = 22.4 V/m; Power Drift = -0.076 dB

Peak SAR (extrapolated) = 0.511 W/kg

SAR(1 g) = 0.395 mW/g; SAR(10 g) = 0.278 mW/g

Maximum value of SAR (measured) = 0.424 mW/g

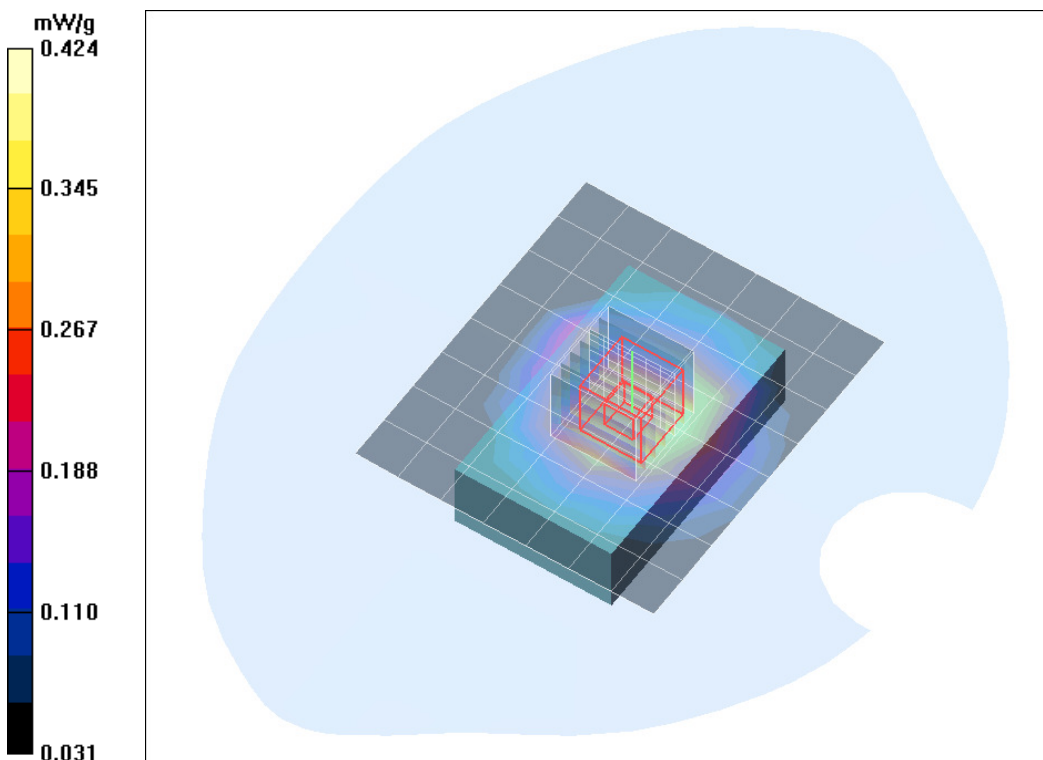


Fig. 16: SAR distribution for WCDMA5, channel 4183, configuration 1, back side, 0 mm distance (May 12, 2016)

Test Laboratory: IMST GmbH, DASY Yellow (II); File Name: [SmartTag_416_y_u5_fm_back_bat.da4](#)

DUT: Buddi; Type: Smart Tag; Serial: 353162072574099
Program Name: WCDMA 5

Communication System: WCDMA (FDD) Band V; Frequency: 836.5 MHz; Duty Cycle: 1:1
Medium parameters used: $f = 836.5$ MHz; $\sigma = 0.99$ mho/m; $\epsilon_r = 53.3$; $\rho = 1000$ kg/m³
Phantom section: Flat Section

DASY4 Configuration:

- Probe: ET3DV6R - SN1579; ConvF(6.4, 6.4, 6.4); Calibrated: 2/23/2016
- Sensor-Surface: 4mm (Mechanical Surface Detection)
- Electronics: DAE3 Sn335; Calibrated: 2/16/2016
- Phantom: SAM Sugar 1341; Type: QD 000 P40 CB; Serial: TP-1341
- Measurement SW: DASY4, V4.7 Build 80; Postprocessing SW: SEMCAD, V1.8 Build 186

Body/Area Scan (7x7x1): Measurement grid: dx=15mm, dy=15mm

Maximum value of SAR (measured) = 0.972 mW/g

Body/Zoom Scan (7x7x7)/Cube 0: Measurement grid: dx=5mm, dy=5mm, dz=5mm

Reference Value = 30.2 V/m; Power Drift = 0.109 dB

Peak SAR (extrapolated) = 1.55 W/kg

SAR(1 g) = 0.975 mW/g; SAR(10 g) = 0.634 mW/g

Maximum value of SAR (measured) = 1.06 mW/g

Body/Zoom Scan (7x7x7)/Cube 1: Measurement grid: dx=5mm, dy=5mm, dz=5mm

Reference Value = 30.2 V/m; Power Drift = 0.109 dB

Peak SAR (extrapolated) = 1.31 W/kg

SAR(1 g) = 0.872 mW/g; SAR(10 g) = 0.570 mW/g

Maximum value of SAR (measured) = 0.995 mW/g

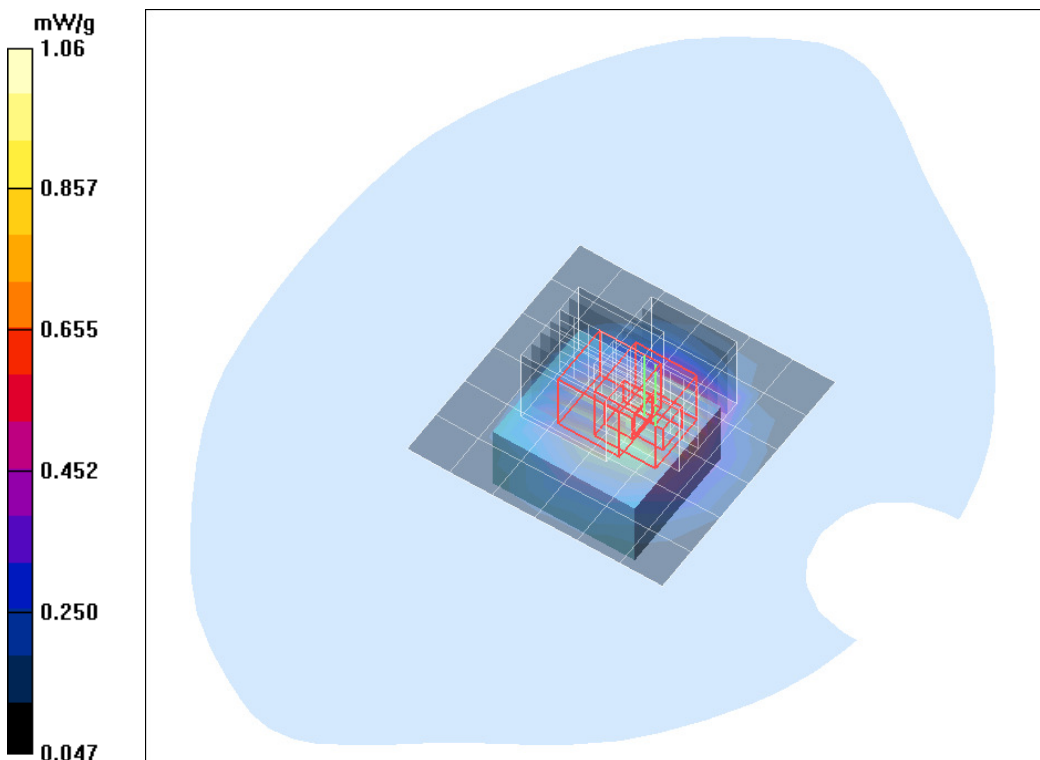


Fig. 17: SAR distribution for WCDMA5, channel 4183, configuration 2, back side, 0 mm distance (May 12, 2016)

Test Laboratory: IMST GmbH, DASY Yellow (II); File Name: [SmartTag_416_y_u5_fm_back_OBC.da4](#)

DUT: Buddi; Type: Smart Tag; Serial: 353162072671416
Program Name: WCDMA 5

Communication System: WCDMA (FDD) Band V; Frequency: 836.5 MHz; Duty Cycle: 1:1
Medium parameters used: $f = 836.5$ MHz; $\sigma = 0.99$ mho/m; $\epsilon_r = 53.3$; $\rho = 1000$ kg/m³
Phantom section: Flat Section

DASY4 Configuration:

- Probe: ET3DV6R - SN1579; ConvF(6.4, 6.4, 6.4); Calibrated: 2/23/2016
- Sensor-Surface: 4mm (Mechanical Surface Detection)
- Electronics: DAE3 Sn335; Calibrated: 2/16/2016
- Phantom: SAM Sugar 1341; Type: QD 000 P40 CB; Serial: TP-1341
- Measurement SW: DASY4, V4.7 Build 80; Postprocessing SW: SEMCAD, V1.8 Build 186

Body/Area Scan (8x9x1): Measurement grid: dx=15mm, dy=15mm

Maximum value of SAR (measured) = 0.171 mW/g

Body/Zoom Scan (7x7x7)/Cube 0: Measurement grid: dx=5mm, dy=5mm, dz=5mm

Reference Value = 11.4 V/m; Power Drift = 0.020 dB

Peak SAR (extrapolated) = 1.22 W/kg

SAR(1 g) = 0.212 mW/g; SAR(10 g) = 0.088 mW/g

Maximum value of SAR (measured) = 0.237 mW/g

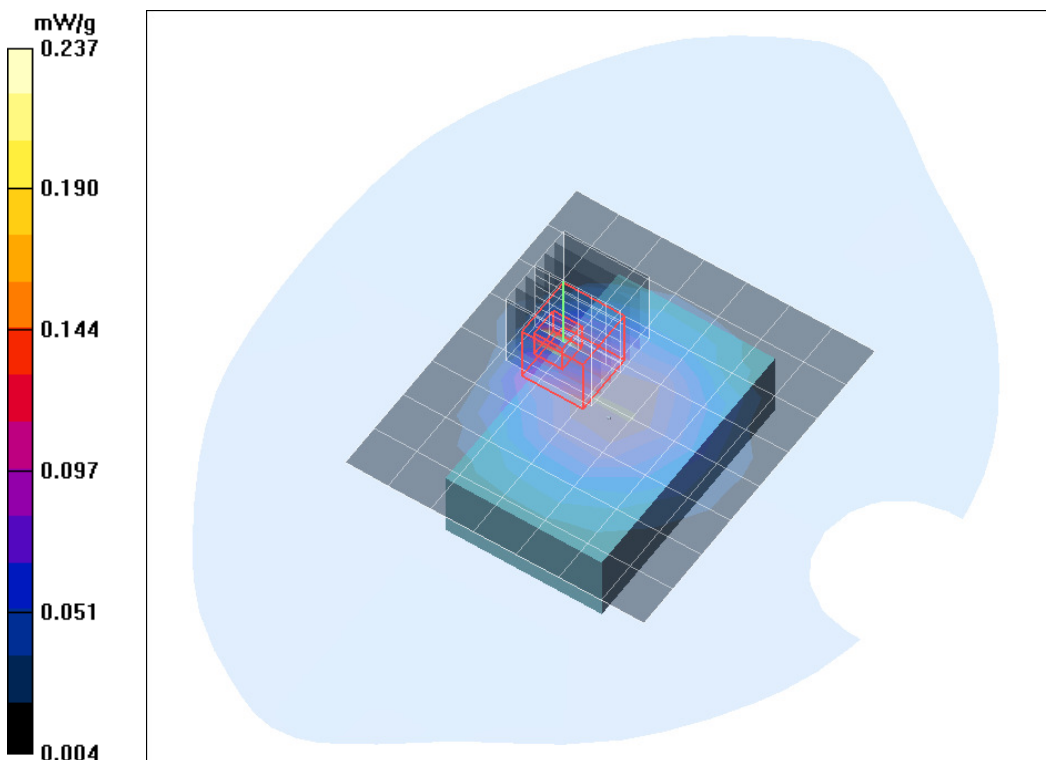


Fig. 18: SAR distribution for WCDMA5, channel 4183, configuration 3, back side, 0 mm distance (May 12, 2016)

Test Laboratory: IMST GmbH, DASY Yellow (II); File Name: [SmartTag_416_y_u5_fl_back_bat.da4](#)

DUT: Buddi; Type: Smart Tag; Serial: 353162072574099
Program Name: WCDMA 5

Communication System: WCDMA (FDD) Band V; Frequency: 826.4 MHz; Duty Cycle: 1:1
Medium parameters used: $f = 826.4$ MHz; $\sigma = 0.98$ mho/m; $\epsilon_r = 53.4$; $\rho = 1000$ kg/m³
Phantom section: Flat Section

DASY4 Configuration:

- Probe: ET3DV6R - SN1579; ConvF(6.4, 6.4, 6.4); Calibrated: 2/23/2016
- Sensor-Surface: 4mm (Mechanical Surface Detection)
- Electronics: DAE3 Sn335; Calibrated: 2/16/2016
- Phantom: SAM Sugar 1341; Type: QD 000 P40 CB; Serial: TP-1341
- Measurement SW: DASY4, V4.7 Build 80; Postprocessing SW: SEMCAD, V1.8 Build 186

Body/Area Scan (7x7x1): Measurement grid: dx=15mm, dy=15mm

Maximum value of SAR (measured) = 0.900 mW/g

Body/Zoom Scan (7x7x7)/Cube 0: Measurement grid: dx=5mm, dy=5mm, dz=5mm

Reference Value = 29.4 V/m; Power Drift = -0.064 dB

Peak SAR (extrapolated) = 1.41 W/kg

SAR(1 g) = 0.880 mW/g; SAR(10 g) = 0.573 mW/g

Maximum value of SAR (measured) = 0.955 mW/g

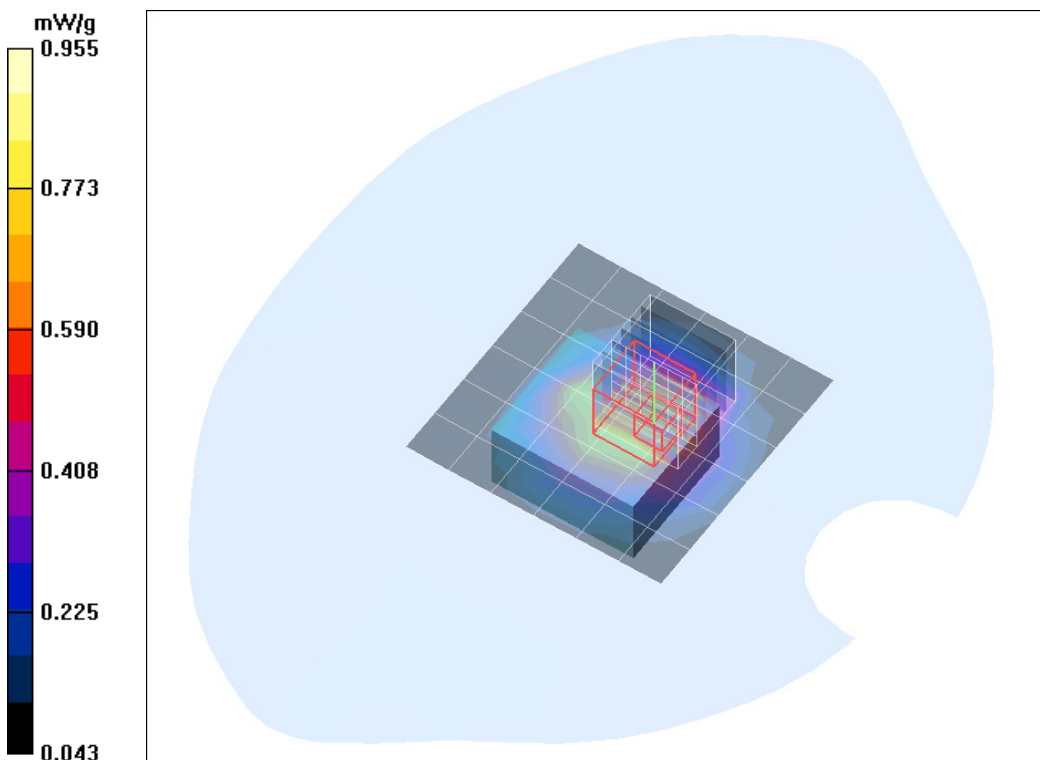


Fig. 19: SAR distribution for WCDMA5, channel 4132, configuration 2, back side, 0 mm distance (May 12, 2016)

Test Laboratory: IMST GmbH, DASY Yellow (II); File Name: [SmartTag_416_y_u5_fh_back_bat.da4](#)

DUT: Buddi; Type: Smart Tag; Serial: 353162072574099
Program Name: WCDMA 5

Communication System: WCDMA (FDD) Band V; Frequency: 846.6 MHz; Duty Cycle: 1:1
Medium parameters used: $f = 846.6$ MHz; $\sigma = 1$ mho/m; $\epsilon_r = 53.2$; $\rho = 1000$ kg/m³
Phantom section: Flat Section

DASY4 Configuration:

- Probe: ET3DV6R - SN1579; ConvF(6.4, 6.4, 6.4); Calibrated: 2/23/2016
- Sensor-Surface: 4mm (Mechanical Surface Detection)
- Electronics: DAE3 Sn335; Calibrated: 2/16/2016
- Phantom: SAM Sugar 1341; Type: QD 000 P40 CB; Serial: TP-1341
- Measurement SW: DASY4, V4.7 Build 80; Postprocessing SW: SEMCAD, V1.8 Build 186

Body/Area Scan (7x7x1): Measurement grid: dx=15mm, dy=15mm

Maximum value of SAR (measured) = 0.848 mW/g

Body/Zoom Scan (7x7x7)/Cube 0: Measurement grid: dx=5mm, dy=5mm, dz=5mm

Reference Value = 28.3 V/m; Power Drift = -0.141 dB

Peak SAR (extrapolated) = 1.34 W/kg

SAR(1 g) = 0.827 mW/g; SAR(10 g) = 0.533 mW/g

Maximum value of SAR (measured) = 0.894 mW/g

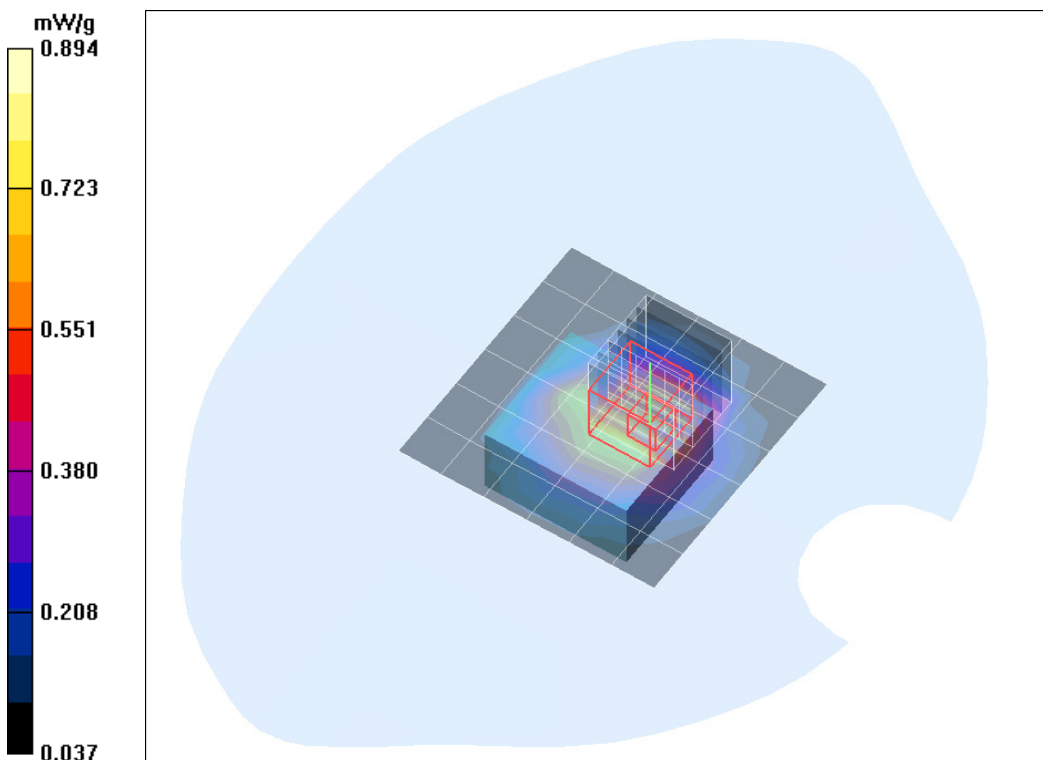


Fig. 20: SAR distribution for WCDMA5, channel 4233, configuration 2, back side, 0 mm distance (May 12, 2016)