



Buddi Technical and User Publications
Device Installation Guide

Clip

Publication release date 17/01/2024 version 3.0_0.1



Buddi Clip



Introduction

Use this Guide to assist with set-up and operation of the buddi Clip. The Clip supports 2 modes of operation, normal mode and victim mode; and has an airplane mode feature which is activated by the ARC (Alarm Receiving Centre).

Device monitoring and profile alert management is set up remotely, refer to the Harrier and User Portal User Guides.



Equipment



1 Buddi Clip



2 Clip Travel Charger



3 Clip Charging Dock*



4 Health Hub*



5 Micro USB B type



6 USB power adapter (UK / EU)



7 Regional USB power adapter**

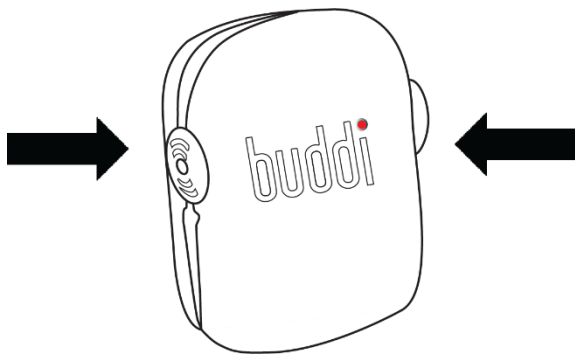
* The device Clip Charging Dock and Health Hub are provided as optional equipment

**The USB power adapter has attachments suitable for regional applications



Set-up Clip

Make sure Clip is ready for operation; charged and tested for communication response before instalment.



A Start clip – wake from stand-by

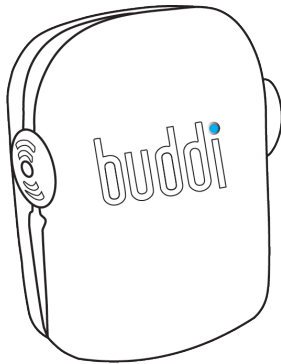
!Info The Clip device will automatically wake from stand-by when it is connected to a power source

- Press one of the Clip side buttons – the device will vibrate to indicate it is in normal mode operation
- The Clip will automatically find a network connection - the device LED will indicate if it cannot immediately connect
 - LED red (flash) – clip is finding a network signal
- Clip has buttons at each side of the device – press one of the Clip side buttons momentarily (duration of 2 to 10 seconds) to get the Clip device network

B Clip online initialisation

- Complete the online registration of the Clip device refer to the information in “how to set up buddi” which is available with the device or can be viewed online at www.buddi.co.uk

!Info Device initialisation can take up to 45 minutes once the online registration is complete



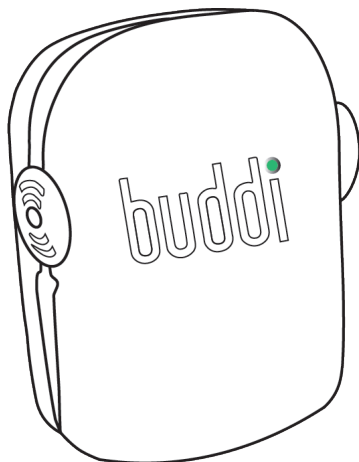
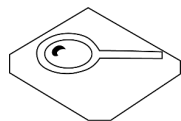
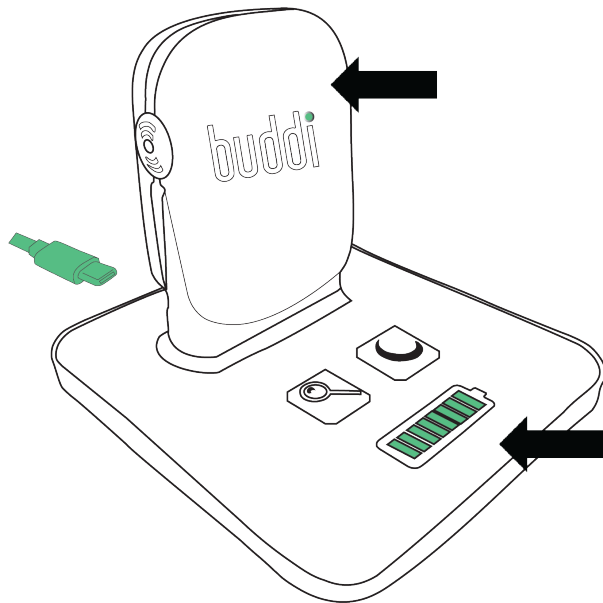
Clip actions and alerts

- Clip has buttons at each side of the device – press both of the Clip side buttons – at the same time - to activate a panic alert
 - LED blue (flashing) – clip is entering panic mode
- To cancel the panic mode activation press both side buttons briefly
- Maintain pressure on both of the Clip side buttons to enter active panic mode
 - Clip will silently vibrate to inform the wearer that the device has activated panic mode
 - Clip will initiate a voice call – when this feature is enabled the call can be 1 or 2 way
 - Clip will send an alert to the monitoring system when in panic mode
- To cancel the panic voice call press both side buttons for 30 seconds or longer
- Clip can initiate panic mode when the device has detected a possible fall motion alert
- Clip can initiate a voice call to the device or named contact when there is a no contact report logged by the monitoring system
- Clip will issue a device vibration when a known buddi tracker device is near – the monitored person can initiate a voice call to the ARC for assistance

!Info *Clip actions and alerts are configured in the monitoring system – refer to the Eagle or Harrier User Guides for remote alert and wearer profile actions*



Charge Clip



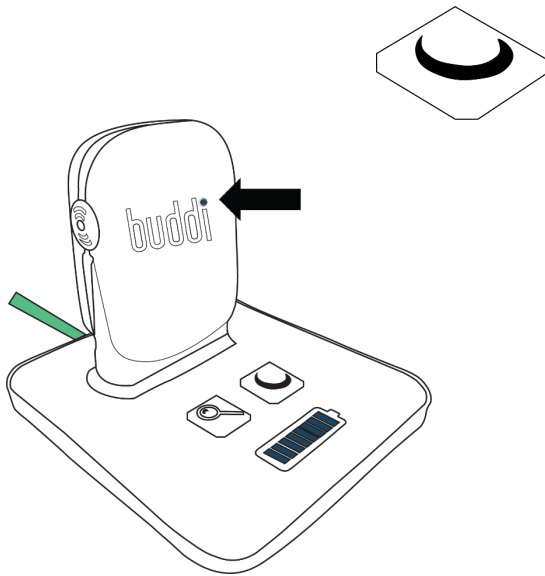
C Charge Clip

- Plug the micro USB cable into the Clip Dock or Travel Charger charging port - connect the USB power charger to a mains socket
- Press Clip at the top of the device to open the clip jaws and place the clip over the charger
- The Clip Charging Dock will illuminate the battery display to show device charge level
- Clip will display an LED indication on the front panel to indicate
 - LED amber – clip is low power – the device should be charged
 - LED green (solid) – clip is connected to the USB charge cable successfully
 - LED green (flash) – clip is charging successfully
 - LED green (intermittent flash or blink) – clip is fully charged

!Info 2 hours is the approximate time required to fully charge the Clip

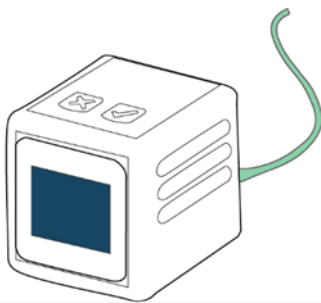
D Find my clip using the Clip Charging Dock

- The Clip device has a 'find my clip' mode which is activated by pressing the search button on the Charging dock
 - Clip will issue an audible sound
 - Clip will vibrate
 - Clip LED will flash
- Press both of the Clip side buttons briefly when the Charging Dock is in 'find my clip' mode to revert to normal operation when the Clip device has been found



E Low display Clip LED using the Clip Charging Dock

- When the Clip device is charging on the Charging Dock the battery LED display will illuminate to show the charge progress and power level of the Clip
- The Clip and Charging Dock LED can be dimmed for night time display mode
- Press the moon button to activate night mode and dim the Clip and Charging Dock device charging indications
- Press the moon button when in low LED night mode to resume normal LED brightness levels



buddi®



F Plug the Health Hub into a mains power socket

- The Health Hub will display a buddi logo on first use and when it is plugged in from complete power discharged
 - The Battery symbol will display if the Health Hub is unplugged and has no available on-device power
 - A plug symbol will display next to the time when the device is unplugged and is low power - the device should be plugged in
- If the Health Hub is set to a 12 hour time display the mode – **P** (pm) or **A** (am) – will be shown with the time

G Clip Flight Mode

- Contact the ARC to request the Clip device to be put into airplane mode
- The Clip device LED will indicate when Clip is entering and exiting flight mode
 - LED lilac (flash) – clip is entering or exiting from flight mode

!Info To check if the device is in flight mode use the button press operation in A – “Start Clip – wake from Stand-by” to find a network



Regulatory Information

FCC Warning

This device complies with part 15 of the FCC Rules. Operation is subject to the following two conditions:

- (1) This device may not cause harmful interference, and
- (2) this device must accept any interference received, including interference that may cause undesired operation.

Any Changes or modifications not expressly approved by the party responsible for compliance could void the user's authority to operate the equipment.

Note: This equipment has been tested and found to comply with the limits for a Class B digital device, pursuant to part 15 of the FCC Rules. These limits are designed to provide reasonable protection against harmful interference in a residential installation.

This equipment generates uses and can radiate radio frequency energy and, if not installed and used in accordance with the instructions, may cause harmful interference to radio communications. However, there is no guarantee that interference will not occur in a particular installation. If this equipment does cause harmful interference to radio or television reception, which can be determined by turning the equipment off and on, the user is encouraged to try to correct the interference by one or more of the following measures:

- Reorient or relocate the receiving antenna.
- Increase the separation between the equipment and receiver.
- Connect the equipment into an outlet on a circuit different from that to which the receiver is connected.
- Consult the dealer or an experienced radio/TV technician for help.

The device has been evaluated to meet general RF exposure requirement. The device can be used in portable exposure condition without restriction.

ISED Statement

This device complies with ISED's licence-exempt RSS standard(s). Operation is subject to the following two conditions: (1) this device may not cause interference, and (2) this device must accept any interference, including interference that may cause undesired operation of the device.

This equipment complies with ISED radiation exposure limits set forth for an uncontrolled environment for portable use. End users must follow the specific operating instructions for satisfying RF exposure compliance. No changes shall be made to the equipment without the manufacturer's permission as this may void the user's authority to operate the equipment.

Ce dispositif est conforme à la norme RSS exemptée de licence de l'ISED. L'opération est soumise aux deux conditions suivantes : (1) ce dispositif peut ne pas causer d'interférence, et (2) ce dispositif doit accepter toute interférence, y compris les interférences qui peuvent causer le fonctionnement indésirable de l'appareil.

Cet équipement est conforme aux limites d'exposition au rayonnement d'ISDE établies pour un environnement non contrôlé à usage portable. Les utilisateurs finaux doivent suivre les instructions d'utilisation spécifiques pour satisfaire à la conformité à l'exposition aux RF. Aucune modification ne doit être apportée à l'équipement sans l'autorisation du fabricant, car cela pourrait annuler l'autorisation de l'utilisateur d'utiliser l'équipement.