

150M Wireless PCI-E card

User's manual

List of items.....	3
Chapter 1 Product Overview	4
1.1 Features.....	4
1.2 Indicator status.....	5
1.3 Security Alert.....	6
Chapter 2 Hardware Installation	6
2.1 Hardware Installation	7
Chapter 3 XP system driver installation and use of.....	8
3.1 XP driver installation.....	8
3.2 XP System Application	10
Chapter 4 Win7 system driver installation and use of.....	13
4.1 Win7 driver installation.....	13
4.2 Win7 System Application	15
Product Specifications.....	17

List of items

Carefully open the box, check the box which should have the following accessories:

A 150M Wireless PCI-E card

A user's manual

A CD containing the driver

Note:

If you find items is damaged or a shortage, please contact the local dealer.

Chapter 1 Product Overview

Thank you for purchasing 150M Wireless PCI-E card. The cards can provide convenient, fast wireless Internet access method. The card supports automatic detection can automatically adjust the speed, wireless transmission rates up to 150Mbps. Support WEP, WPA, WPA2 password for wireless plus model for wireless network connection to provide security. In order to understand the product and its use during the installation, please read the User's Manual.

1.1 Features

- Follow the IEEE 802.11g, IEEE 802.11b and IEEE 802.11n standard ;
- Wireless transmission rates up to 150Mbps, according to the wireless network environment automatically adjust the rate ;
- Supports 64/128 WEP, WPA /WPA2/WPA-PSK/WPA2-PSK(TKIP/AES),

supports IEEE 802.1X ;

- When the network is in Infrastructure mode, the AP (Access Point) to support wireless roaming between ;
- Supports Windows 2000, Windows XP 32/64bit, Vista 32/64bit, Windows 7 32/64bit , Linux ;
- Linux support Ad - Hoc and seamless compatibility with 802.11 B / G / N products, infrastructure mode ;

1.2 Indicator status

- 1) 150M Wireless PCI-E card has two status lights front.
- 2) ACT LED blinks to indicate the correct completion of hardware and software installation.
- 3) LINK A flashing light indicates the wireless network is connected.

1.3 Security Alert

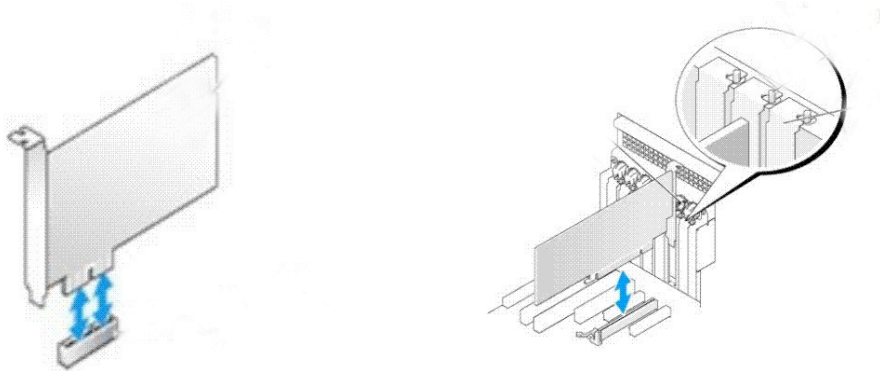
- In order to ensure that products work, please pay attention to water ;
- Do not place the product in a humid environment, such as: bathroom ;
- To prevent violations of other harmful substances, such as: acid, alkali ;
- If a failure occurs, an authorized repair professionals ;
- Do not use this product in direct sunlight or other heat sources under the sun ;

Chapter 2 Hardware Installation

2.1 Hardware Installation

150M Wireless PCI-E card for desktop computer, follow proper installation methods.

- 1) Close desktop computer and disconnect the power. Open the main chassis, the motherboard selected an empty PCI-E slot, and remove the corresponding slot of the plate.
- 2) The card into the selected PCI-E slot, and verify that all card pin and socket contacts, as shown :



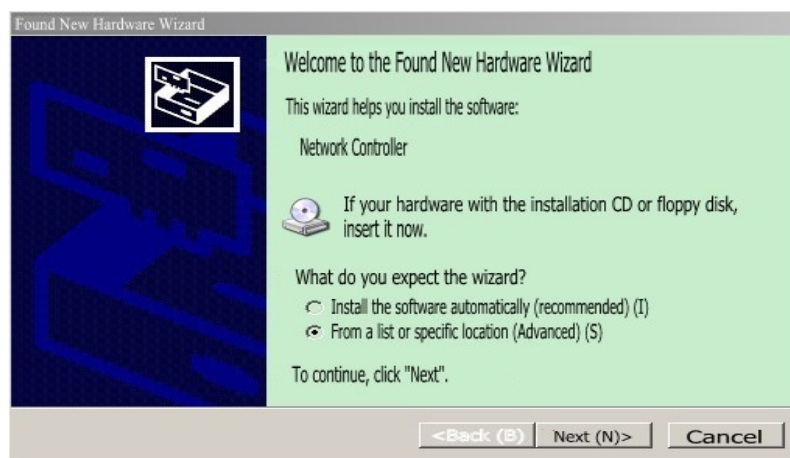
- 3) Screw the card to the chassis, and covered with the cover.
- 4) Plug the computer power, and start the computer.

Note: The LINK and ACT LED may not work correctly, if users do not use the driver in the CD-ROM

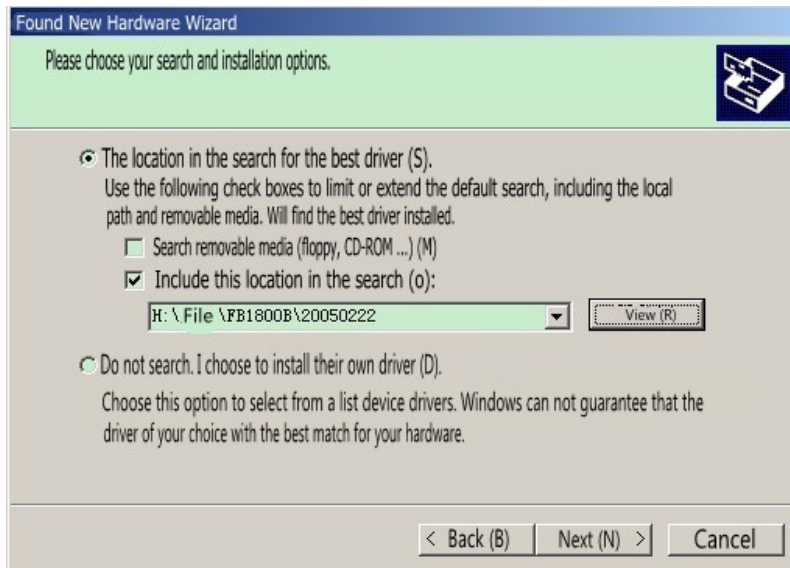
Chapter 3 XP system driver installation and use of

3.1 XP driver installation

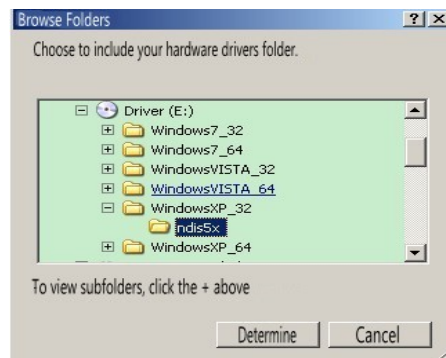
1) Hardware into the PCI-E slot, boot into the system, install new hardware wizard pops up. In the pop-up window, select "Install from a list or specific location" Click "Next", as shown below:



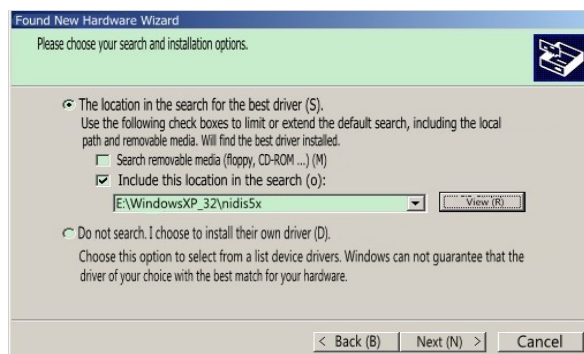
2) In the new window select "Include this location in search", click "Browse" as shown below:



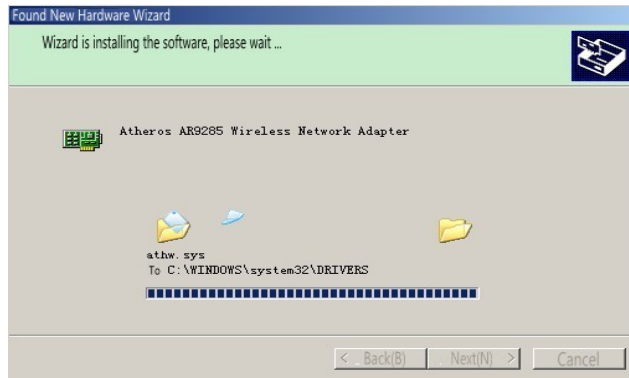
3) In the new window select CD-ROM drive in the "WindowsXP_32" driver folder under the "Ndis5x. Click" OK "as shown below:



4) Select the correct drive path, click "Next", as shown below:



5) Drive is being installed, as shown below:



6) Click "Finish" to complete the driver installation, as shown below:

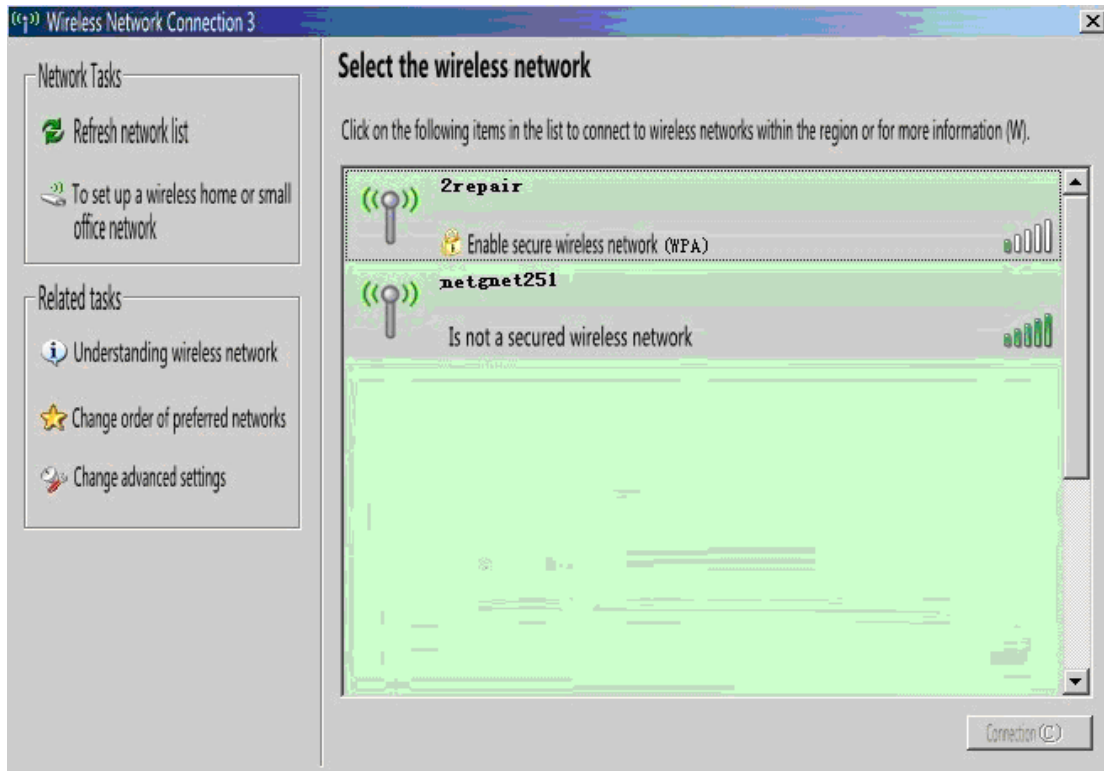


3.2 XP System Application

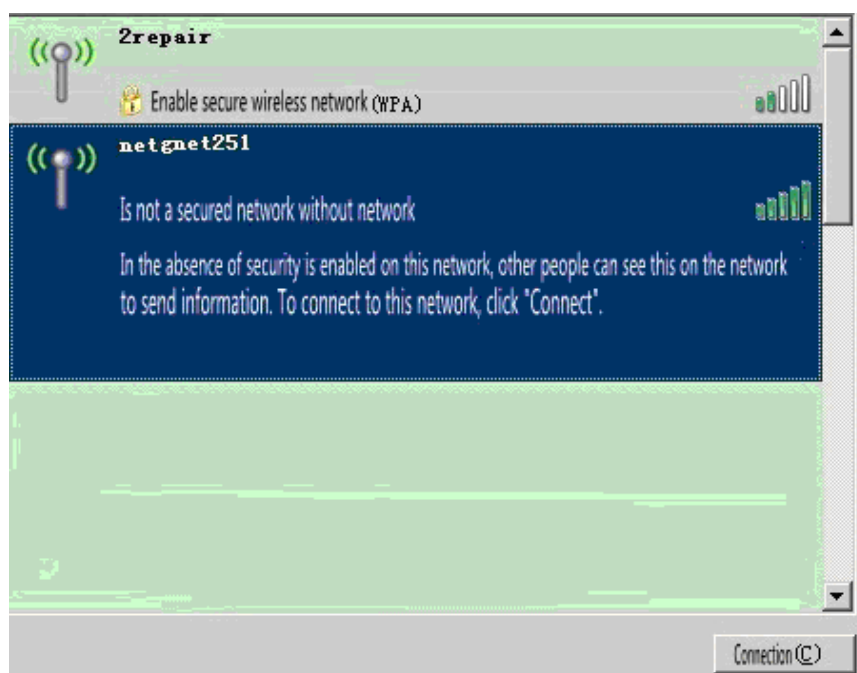
1) In the task bar, click the wireless connection icon, as shown below:



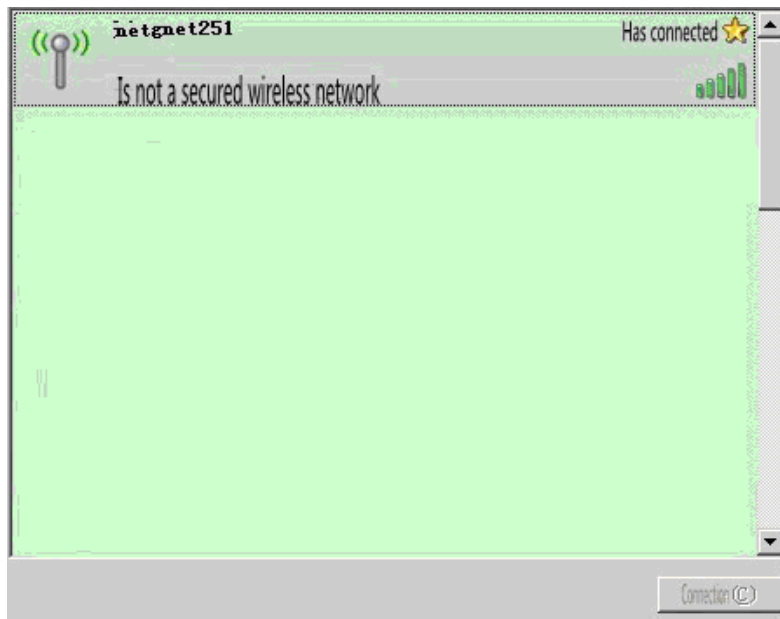
2) Open wireless network connection, you can see the wireless network settings interface, as shown below:



3) Select an appropriate network, click Connect, as shown below:



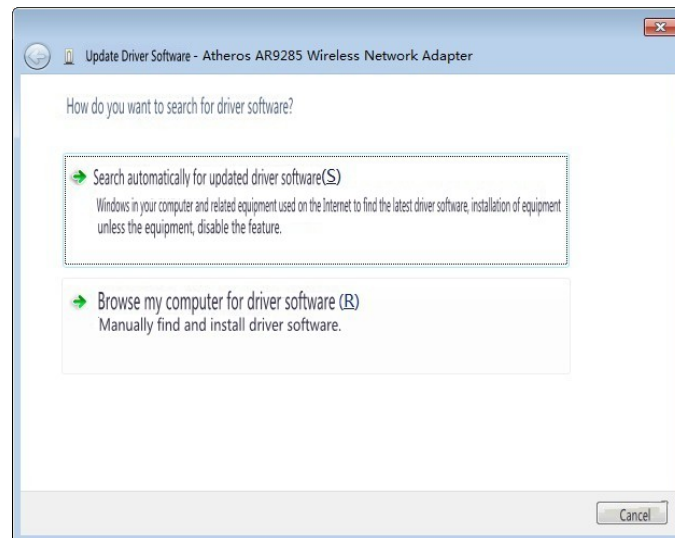
4) Wireless network is connected, the user can normally connect to the Internet. As shown below:



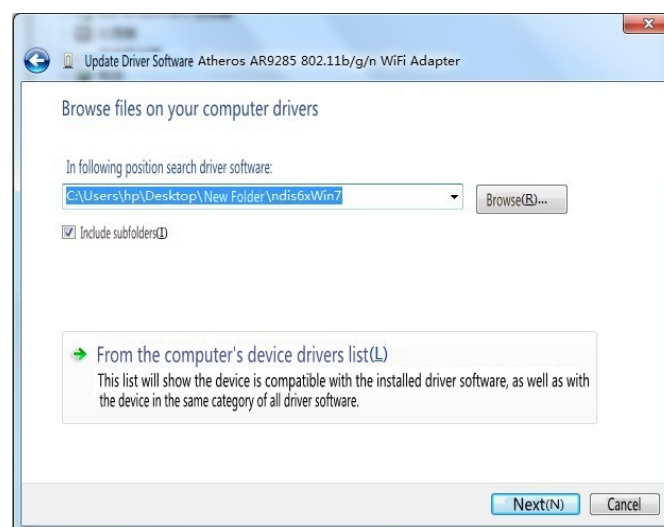
Chapter 4 Win7 system driver installation and use of

4.1 Win7 driver installation

1) Right-click "Computer" - "Management" - "Device Manager" - right-click the wireless network card, "Update Driver Software." Select "Browse my computer for driver software", as shown below:



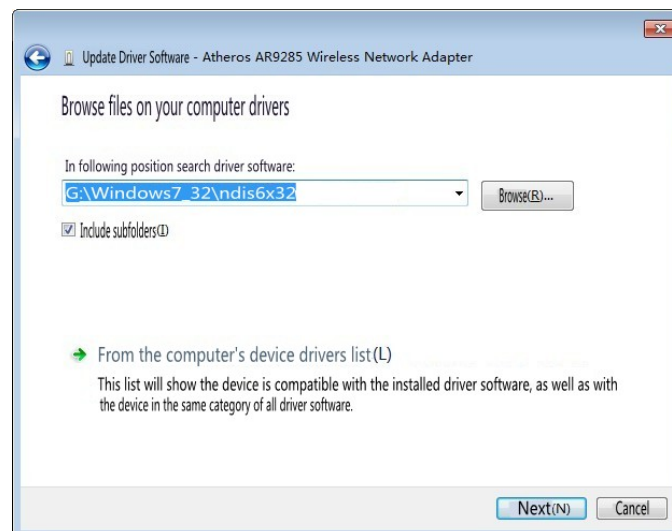
2) In the pop-up window, click "Browse" as shown below:



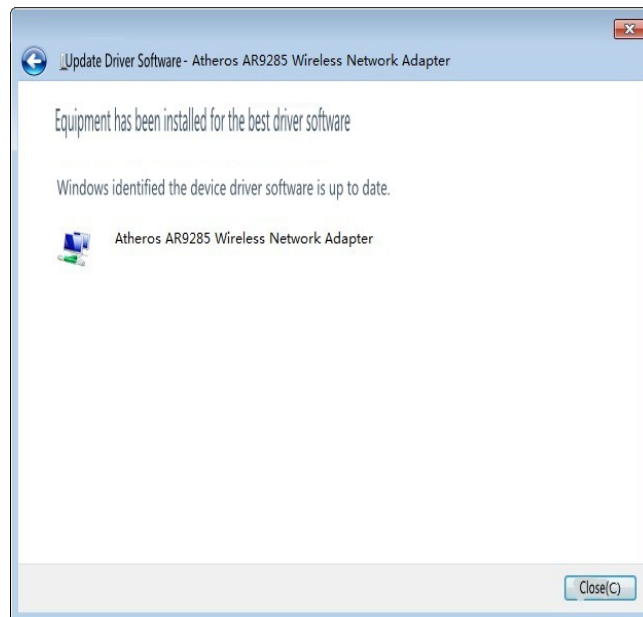
3) In the new window select CD-ROM drive in the "Windows7_32" driver folder under the "Ndis6x32. Click" OK "as shown below:



4) Select the correct drive path, click "Next", as shown below:



5) Click Close, and driver updates to complete, as shown below:

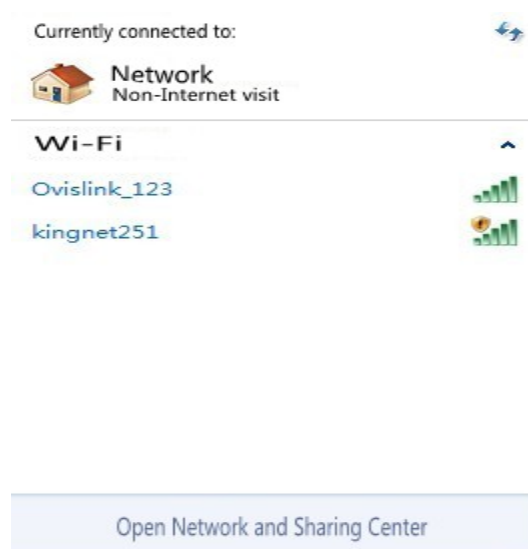


4.2 Win7 System Application

1) The network icon in the taskbar, as shown below:



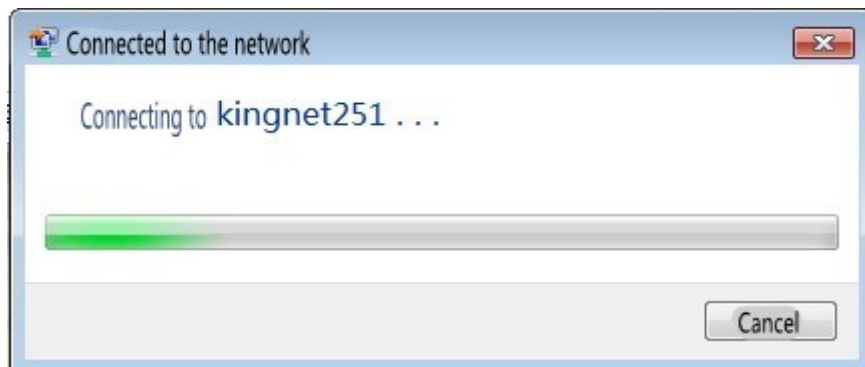
2) Click the Network icon, the following window:



3) Select an appropriate network, click Connect, as shown below:



4) The wireless network is connected, as shown:



5) Wireless network is connected, the user can normally connect to the Internet.

As shown below:



Product Specifications

Hardware Features	
Model	K2-652PE
INTERFACE	PCI-E Module
ANTENNA TYPE	Max. 2dBi with reversed SMA Port
Chipset	AR9285
Voltage	3.3V
DIMENSIONS(W ×	48*74.5*18mm
Wireless Features	
WIRELESS	IEEE 802.11n, IEEE 802.11g, IEEE 802.11b
FREQUENCY RANGE	2.400-2.4835GHz
SIGNAL RATE	IEEE 802.11 b Standard Mode : 1,2,5.5,11Mbps IEEE802.11 g Standard Mode:6,9,12,18,24,36,48,54 Mbps IEEE 802.11n/Draft 2.0 Mode: MCS0-7 (HT20/40)
RECEIVE	130M: -68dBm@10% PER 108M: -68dBm@10% PER 54M: -68dBm@10% PER 11M: -85dBm@8% PER 6M: -88dBm@10% PER 1M: -90dBm@8% PER
SENSITIVITY	
MODULATION TECHNOLOGY	DBPSK, DQPSK, CCK, OFDM, 16-QAM, 64-QAM
WIRELESS SECURITY	Support 64/128 bit WEP, WPA-PSK/WPA2-PSK,
WIRELESS TRANSMIT	802.11b: 12.37dBm 802.11g: 12.11dBm 802.11n(HT20): 11.52dBm 802.11n(HT40): 11.50dBm
WORK MODE	Ad-Hoc / Infrastructure mode
Others	
CERTIFICATION	CE, FCC, RoHS
CONSUME	TBD
PACKAGE	Bulk packing: Wireless Adapter K2-652PE 100PCS/CTN
SYSTEM REQUIREMENTS	Windows 7(32/64bits), Windows Vista(32/64bits), WindowsXP(32/64bits), Windows2000, Linux, Android

ENVIRONMENT	Operating Temperature: 0°C~40°C (32°F~104°F)
--------------------	--

NOTE: This equipment has been tested and found to comply with the limits for a Class B digital device, pursuant to Part 15 of the FCC Rules. These limits are designed to provide reasonable protection against harmful interference in a residential installation. This equipment generates, uses and can radiate radio frequency energy and, if not installed and used in accordance with the instructions, may cause harmful interference to radio communications. However, there is no guarantee that interference will not occur in a particular installation. If this equipment does cause harmful interference to radio or television reception, which can be determined by turning the equipment off and on, the user is encouraged to try to correct the interference by one or more of the following measures:

- Reorient or relocate the receiving antenna.
- Increase the separation between the equipment and receiver.
- Connect the equipment into an outlet on a circuit different from that to which the receiver is connected.
- Consult the dealer or an experienced radio/TV technician for help.

In order to comply with RF exposure requirements, a minimum distance of 20 cm shall be maintained between the antenna and all persons for final Installation, and only the reversed antenna with the max. gain less or equal to 2 dBi shall be used.

FCC ID: ZDIK2-652PE

IMPORTANT REGULATORY INFORMATION

This device complies with Part 15 of the FCC Rules: Operation is subject to the

following two conditions:

1. This device may not cause harmful interference and
2. This device must accept any interference that is received, including any interference that may cause undesired operation.

WARNING:

Changes or modifications to this unit not expressly approved by the party responsible for compliance could void the user's authority to operate the equipment.