

# APPROVAL

Manufacture: ShenZhen Foscam Intelligent Technology Co., Ltd.  
Room 902, Building 1B, Shenzhen International Innovation Valley,  
Xingke 1st Street, Nanshan Dist, Shenzhen, China, 518000

---

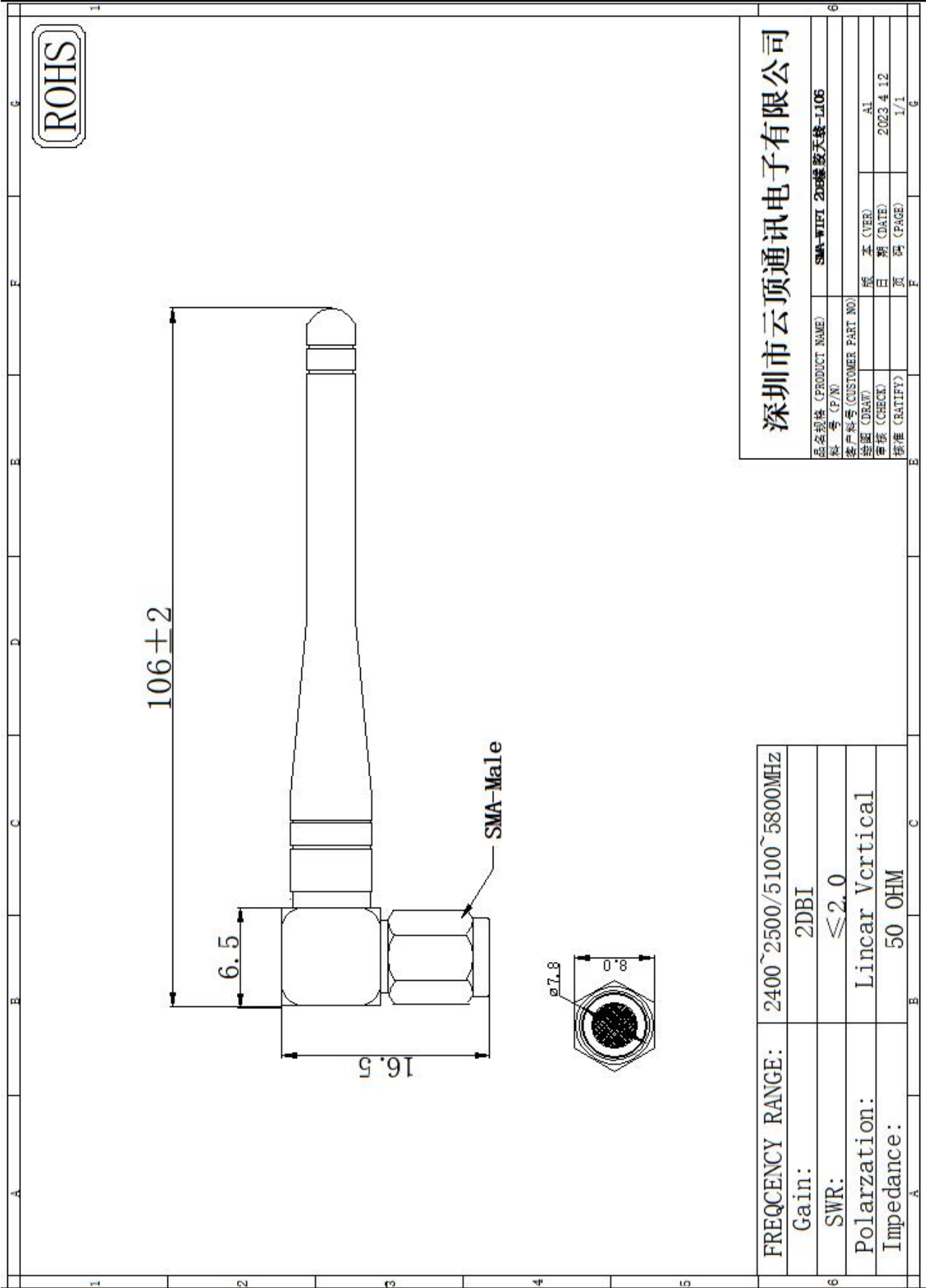
DESCRIPTION: External antenna: **SMA-2.4/5G L:106mm**

---

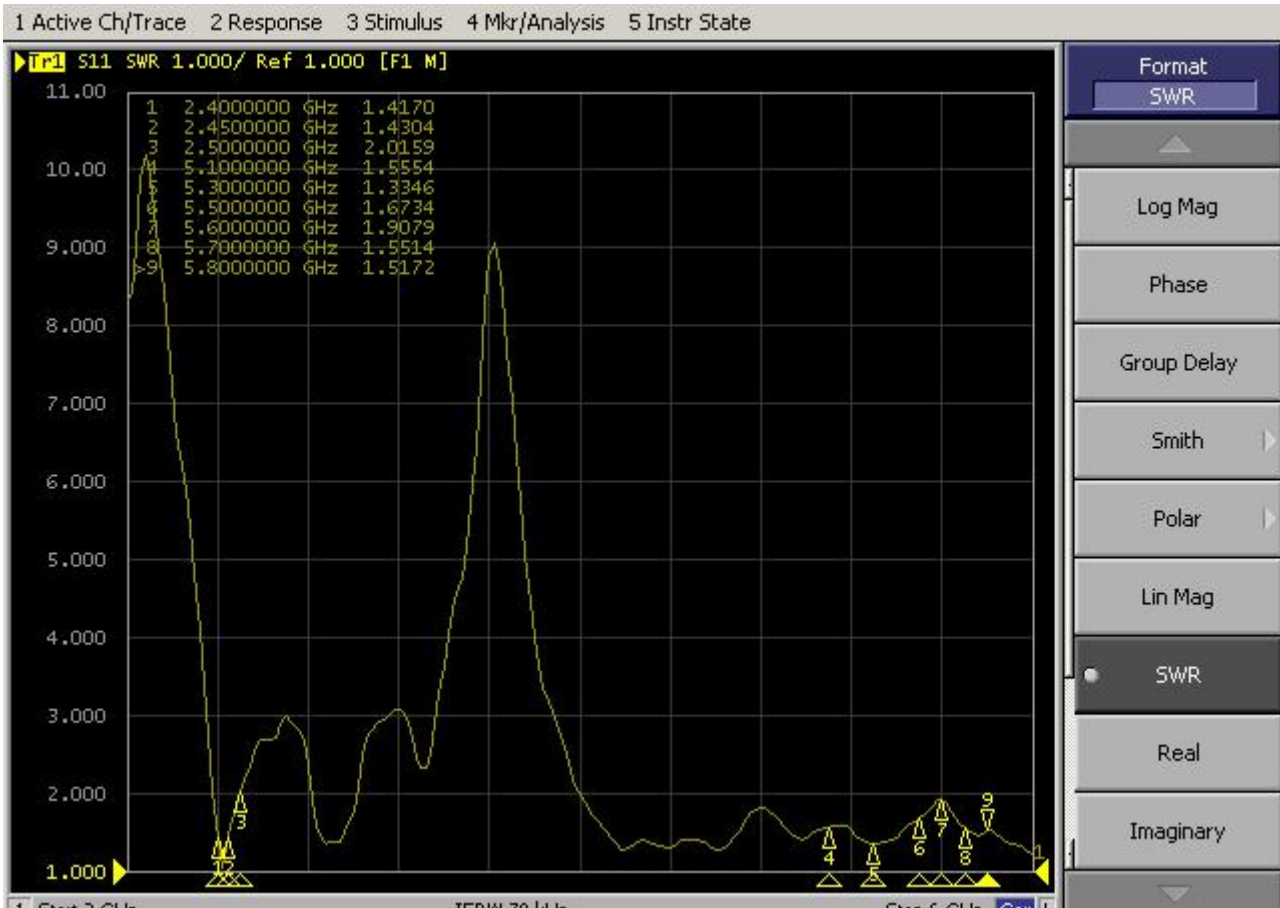
PART NO.: **303305000108**

---

Antenna Photo:



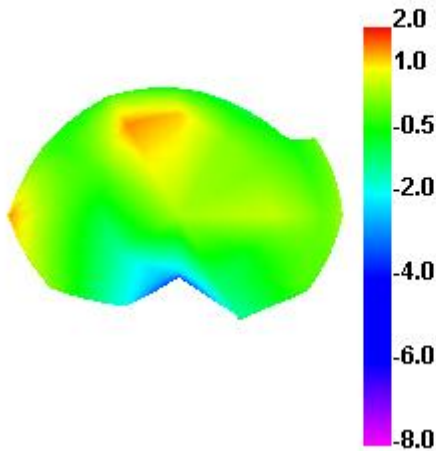
# SWR



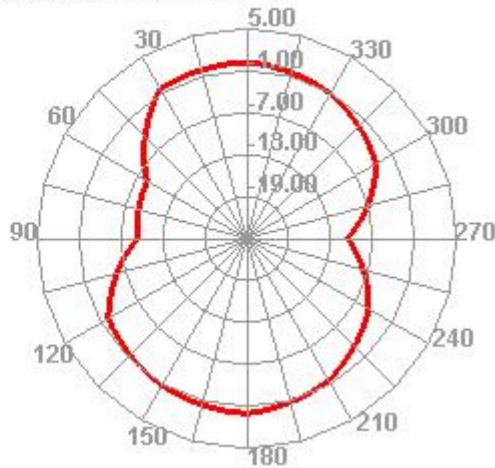
电性能指标		Electrical Specifications	
频率范围	2400~2500/5100~5800MHz	Frequency Range	2400~2500/5100~5800MHz
电压驻波比	≤2.0	VSWR	≤2.0
输入阻抗	50 Ω	Input Impedance	50 Ω
最大输入功率	50W	Maximum Input Power	50W
机械指标		Mechanical Specifications	
天线颜色	白色	Antenna Color	White
接口形式	SMA	Input connector	SMA
天线长度	106MM	Cable length	106MM
工作温度	-40℃~+85℃	Working Temperature	-40℃~+85℃
工作湿度	20~80%	Working Humidity	20~80%

Passive Test For WIFI2.4		
Freq (MHz)	Effi (%)	Gain (dBi)
2400	67.66	2.25
2410	66.76	2.11
2420	62.69	1.77
2430	62.26	1.59
2440	65.84	1.82
2450	69.87	1.96
2460	68.21	1.77
2470	70.42	1.81
2480	72.25	1.91
2490	75.6	2.26
2500	72.4	2.16

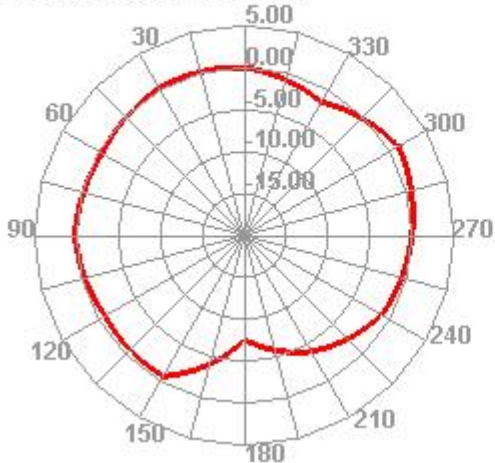
**2450.000MHz**



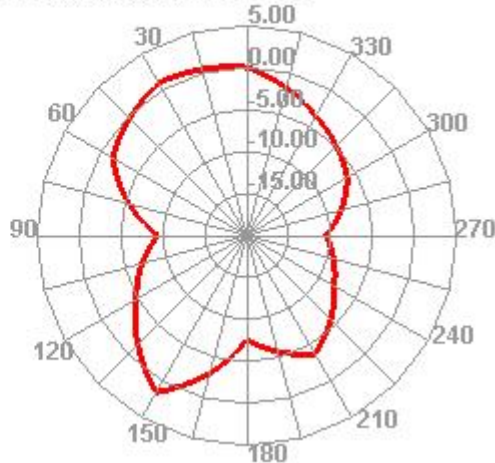
**2450.000MHz H**



**2450.000MHz E1**

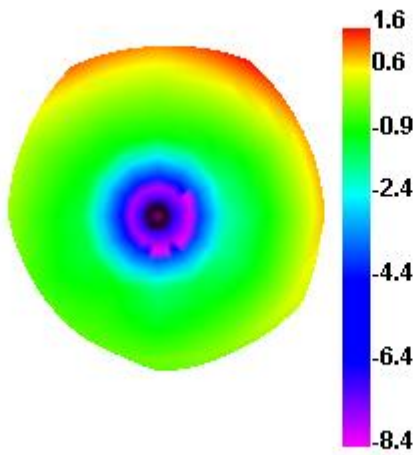


**2450.000MHz E2**

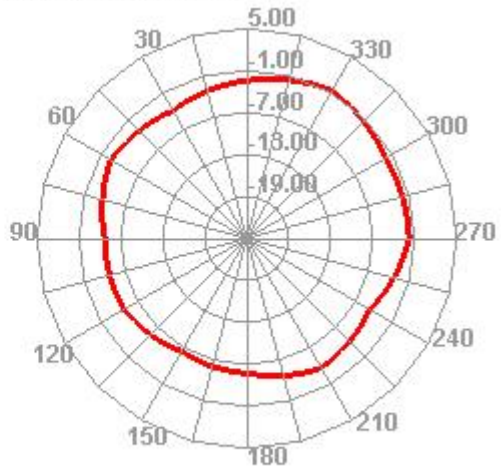


Passive Test For WIFI5.8		
Freq (MHz)	Effi (%)	Gain (dBi)
5150	65.9	1.9
5250	62.3	1.51
5350	62.73	1.53
5450	63.54	1.63
5550	63.67	1.69
5650	75.38	2.33
5750	77.21	2.7
5850	69.62	2.12

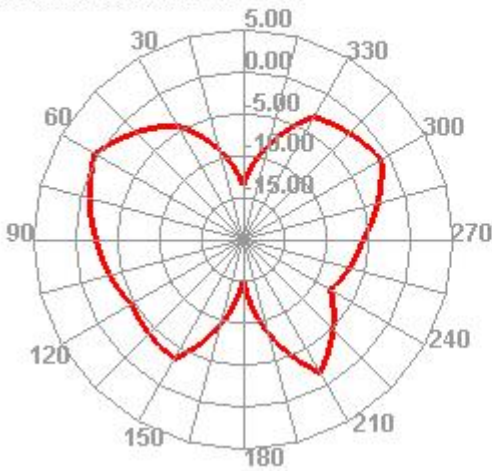
**5450.000MHz**



**5450.000MHz H**



**5450.000MHz E1**



**5450.000MHz E2**

