

Shenzhen Yunding Communication Electronics Co., LTD

TEL: +86 0755-23073599

FAX: +86 0755-23097189

E-mail:wht0809@163.com

APPROVAL SHEET

CUSTOMER: Fu Si Kang Mu

DESCRIPTION: 2.4G/5.8G- 5DB AntennaWhite-L195-SMA

PART NO.: YD-C01-0210

CUS PART NO.: 303305000114

D A T E: September 25th, 2024

Yunding signature

ENGINEERING DEPARTMENT	Q C DEPARTMENT	SALES DEPARTMENT

Customer signature

ENGINEERING DEPARTMENT	Q C DEPARTMENT	PURCHASING DEPARTMENT

TEL: 0755 23073599

✂ Approval in duplicate, please signed by your company.

Shenzhen Yunding Communication Electronics Co., LTD

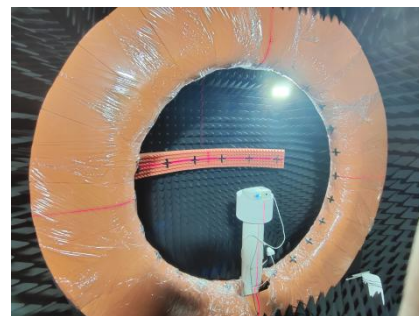
TEL: +86 0755-23073599

FAX: +86 0755-23097189

E-mail:wht0809@163.com

1. Test items and equipment

	Test items	Equipment
1. S11-parameter	1. Return Loss 2. VSWR	network analyzer: Agilent E5071B HP 8753D
2.Active test	1. Transmitting power 2. Receiving sensitivity	1. Darkroom: ETS 7x4x3 m (3D) Chamber ETS 5x3x3 m (3D) Chamber 2.general-purpose tester : Agilent 8960 E5515B ×2 StarPoint SP6011 Cmw500
3.Passive test	1.Gain 2.Efficiency	1. Darkroom: ETS 7x4x3 m (3D) Chamber ETS 5x3x3 m (3D) Chamber 2. network analyzer: Agilent E5071B HP 8753D



Shenzhen Yunding Communication Electronics Co., LTD

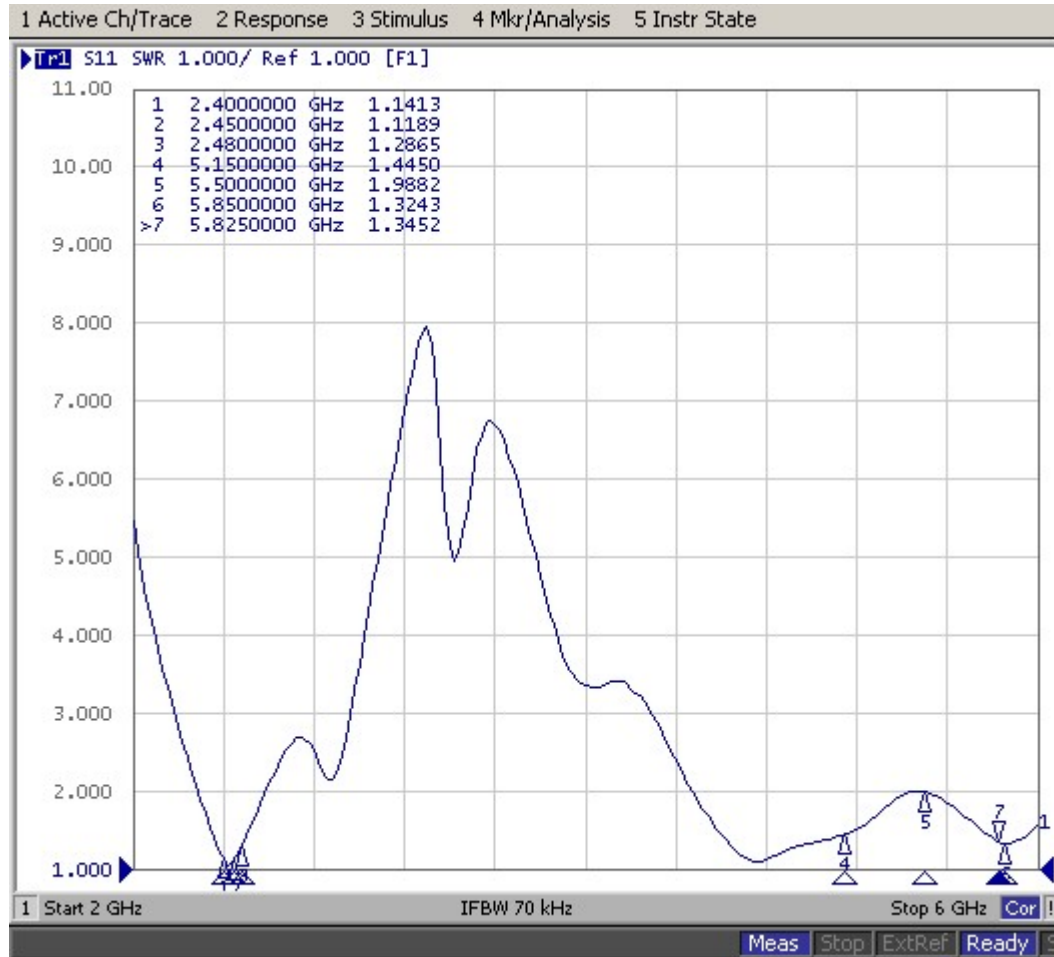
TEL: +86 0755-23073599

FAX: +86 0755-23097189

E-mail:wht0809@163.com

2. Antenna performance

SWR



Shenzhen Yunding Communication Electronics Co., LTD

TEL: +86 0755-23073599

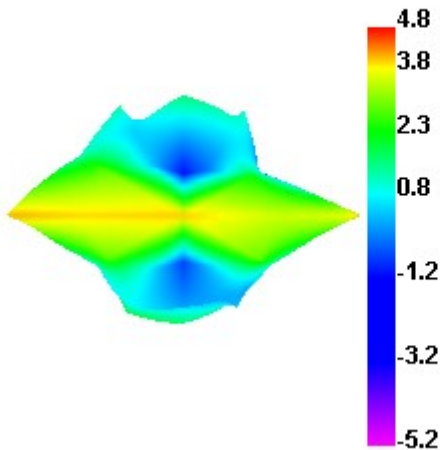
FAX: +86 0755-23097189

E-mail:wht0809@163.com

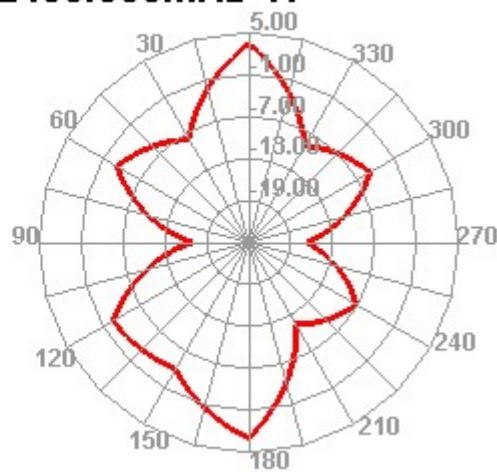
3. Antenna efficiency and gain

Passive Test For WIFI2.4		
Freq (MHz)	Effi (%)	Gain (dBi)
2400	66.87	4.93
2410	65.69	4.69
2420	61.26	4.29
2430	61.32	4.25
2440	64.42	4.48
2450	68.5	4.8
2460	69.93	4.85
2470	71.73	4.97
2480	74.19	5.05
2490	76.45	5.12
2500	72.6	4.83

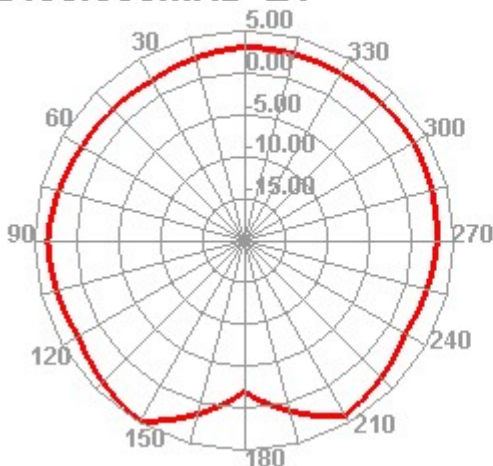
2450.000MHz



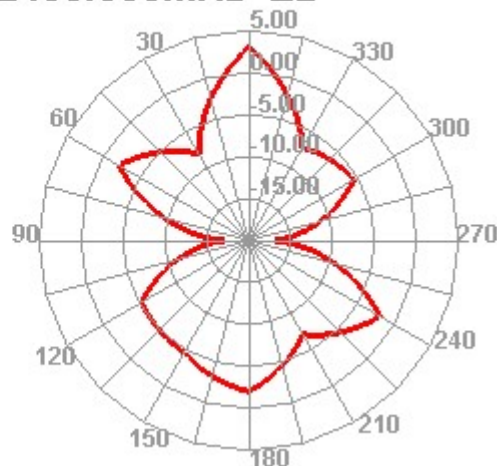
2450.000MHz H



2450.000MHz E1



2450.000MHz E2



Shenzhen Yunding Communication Electronics Co., LTD

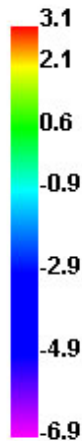
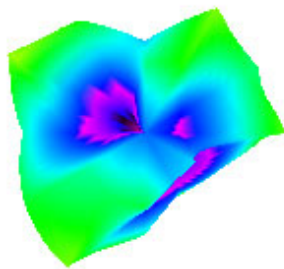
TEL: +86 0755-23073599

FAX: +86 0755-23097189

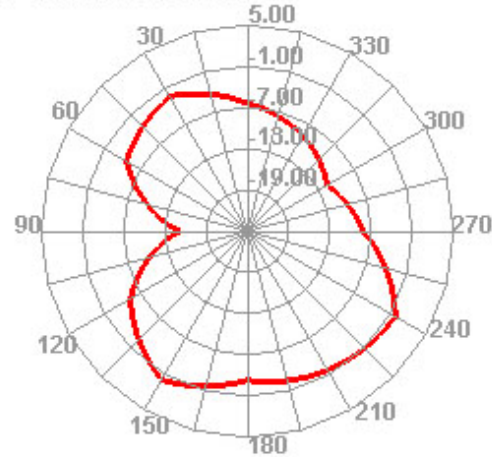
E-mail:wht0809@163.com

Passive Test For WIFI5.8		
Freq (MHz)	Effi (%)	Gain (dBi)
5150	49.24	2.89
5250	49.05	2.8
5350	49.63	2.69
5450	54.65	3.09
5550	55.07	3.34
5650	59.67	4.13
5750	60.12	4.21
5850	60.38	4.36

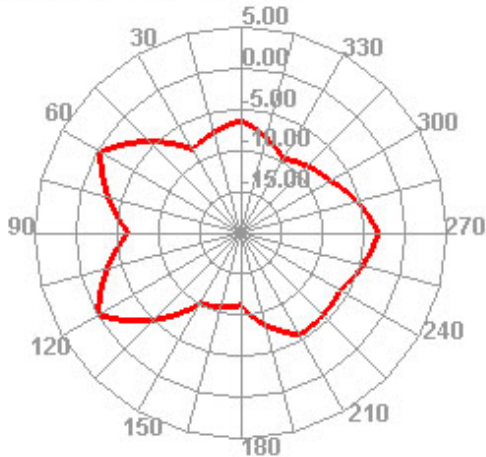
5450.000MHz



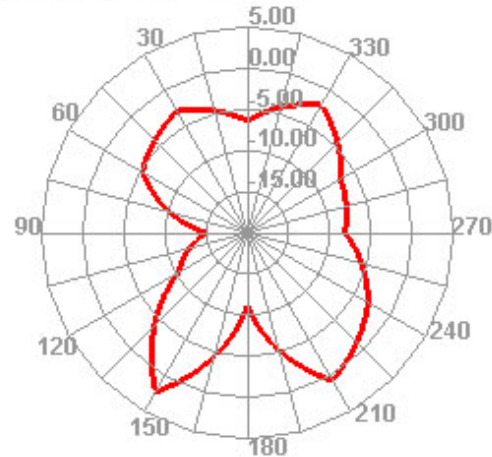
5450.000MHz H



5450.000MHz E1



5450.000MHz E2



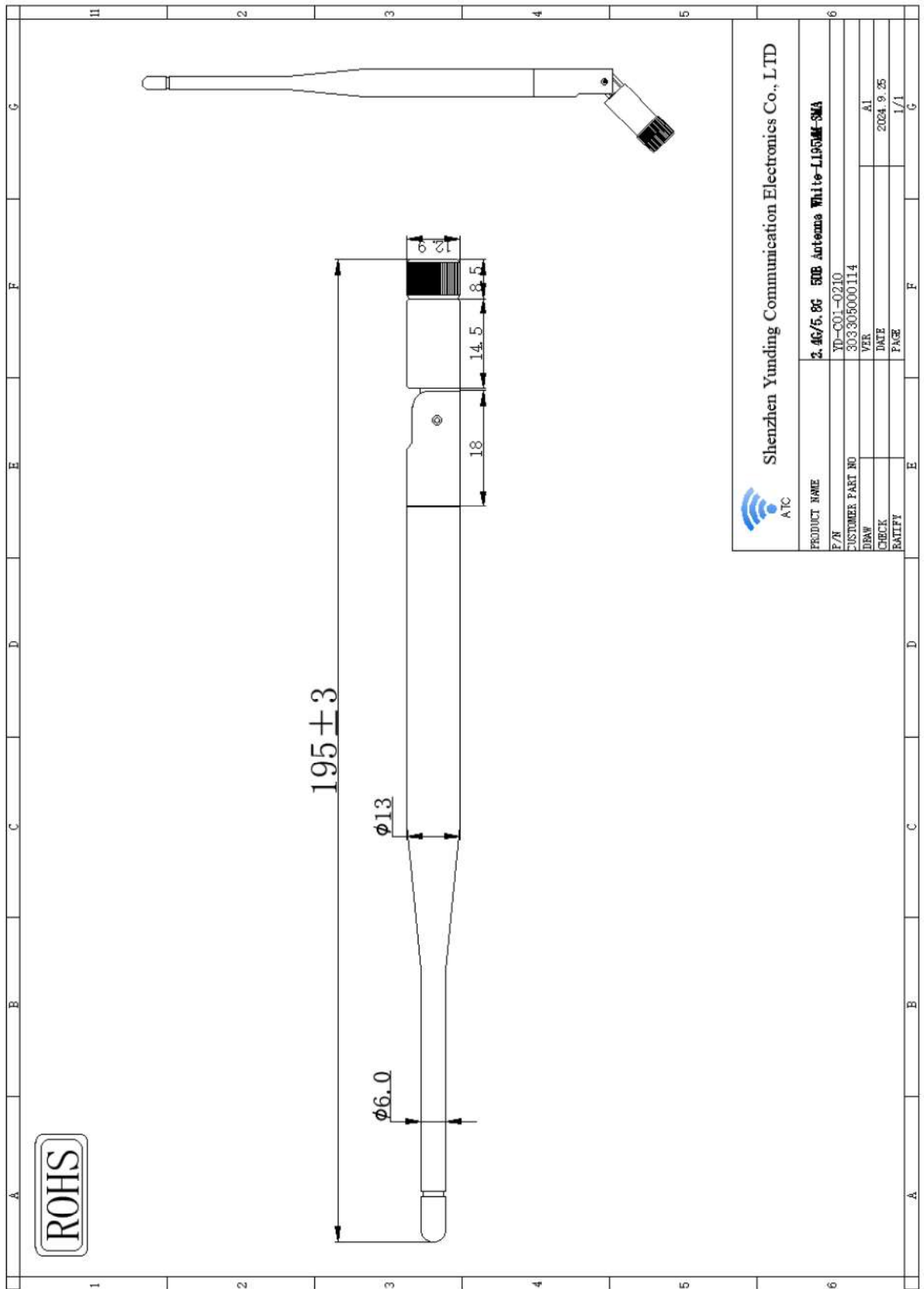
Shenzhen Yunding Communication Electronics Co., LTD

TEL: +86 0755-23073599

FAX: +86 0755-23097189

E-mail:wht0809@163.com

4. Antenna structure diagram:



Shenzhen Yunding Communication Electronics Co., LTD

TEL: +86 0755-23073599

FAX: +86 0755-23097189

E-mail:wht0809@163.com

Technical parameters of electrical appliances

Electrical Specifications

Frequency Range	2400~2500/5100~5800MHz
VSWR	≤ 2.0
Input Impedance	50 Ω
Gain	5 DBI

Mechanical Specifications

Antenna color	White
Input connector	SMA
Antenna length	195mm
Working Temperature	-40°C~+85°C
Working Humidity	20~80%

Shenzhen Yunding Communication Electronics Co., LTD

TEL: +86 0755-23073599

FAX: +86 0755-23097189

E-mail:wht0809@163.com

Environment performance test:

Project	Test condition	Test results
Storage environment	Test temperature, humidity, pressure without stated condition as followings :1.Temperature: -30 °C ~ +80 °C ;2.Relative humidity: 45%-85%;3,Pressure: 86kpa-106kpa	Electrical and mechanical performance normal
High and low temperature test	Having 5 times cycle between -40°C to 70°C,Then in common condition 1-2 hours test exterior quality.	Measurement satisfied with electrical and mechanical performance normal.
Resistance constant hot and humid test	Relative humidity:95±3%,Test temperature: 40°C,last 2 hours , put it after 5 min test the electrical function . Test products during common condition 1-2 hours ,Then test exterior quality.	Measurement satisfied with electrical and mechanical performance normal.
Vibration test	Vibrate Frequency:10-55HZ; Distance :0.35mm;Acceleration :50.0m/s;Sweep frequency cycle:30 times	Electrical and mechanical performance normal
Fall test	From 1 mheight fall down 3 times freely (vertical direction)	Electrical and mechanical performance normal