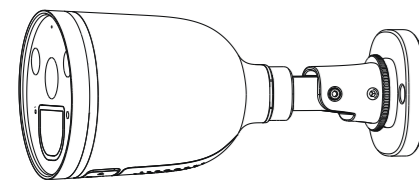




Quick Setup Guide



FAQS

Support email: support@foscam.com

To view this guide in other languages (e.g. Nederlands, Deutsch, Français, Español), and for detailed manuals, tools, etc., please visit foscam.com/downloads.

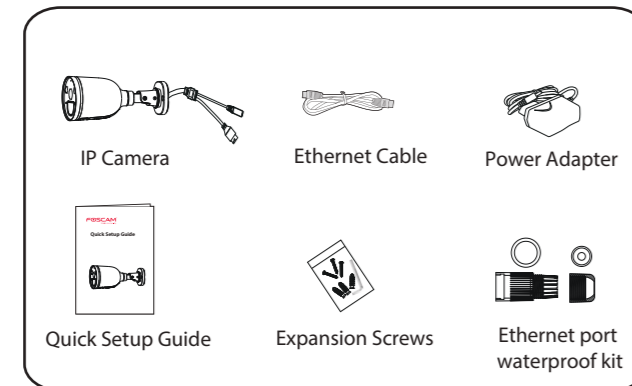
V1.1

305503000601

Setting Up Your Foscam Security Camera

1 Getting Started

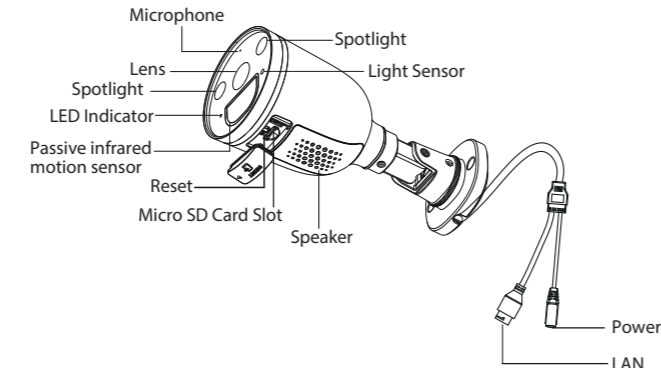
Package Contents



Security Tips

- Please change the camera's password regularly, using a combination of numbers, letters and special characters.
- We recommend that you regularly update your camera with the latest available software and firmware to ensure the best experience with your camera.

2 Physical Description



Warning:



The cords on this product are a potential strangulation hazard. For child safety, please keep these cords out of the reach of children.

3 Setting Up Your Camera: Wired Connection via the Foscam App (Recommended)

Before You Get Started

Scan the QR code below to download and install the Foscam APP.



To ensure a smoother video experience on your smart phone, it is recommended that your smart phone meet the following specifications:

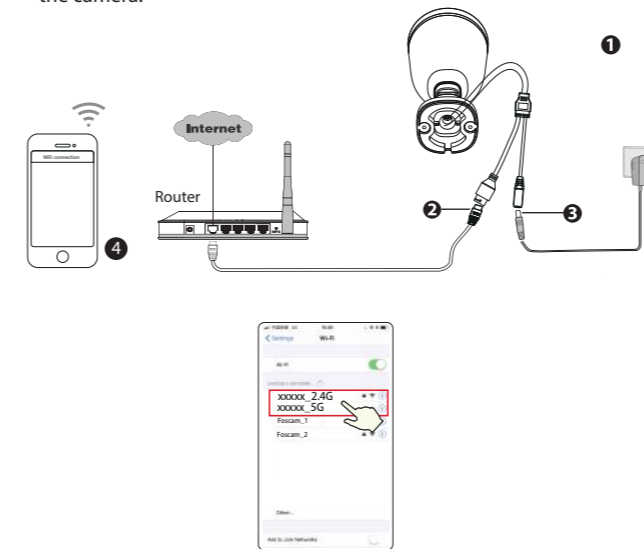
- iOS: version 11 or higher.
- Android: 4.1 or higher, using a device with a Graphics Processing Unit (GPU).

Note: For the best experience, please update the APP to the latest version!

Wired Connection

1. Connect the camera to your router with an Ethernet cable.
2. Plug the power adapter into the camera, and then wait for about 1 minute.

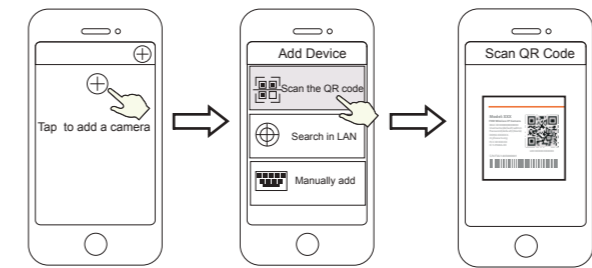
3. Make sure your smart phone is connected to the same WiFi network as the camera.



Tips: The camera supports dual-band 2.4GHz and 5GHz WiFi networks, so you can choose the channel with the stronger signal to use. For example, choose your SSID: XXXXX_2.4G or XXXXX_5G.

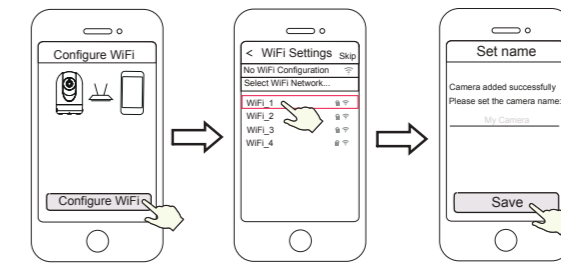
4. Open the foscam APP and please register a Foscam account, or sign in if you have one already.

5. After logging into Foscam APP, select "Tap to add a camera" or "+" icon on the upper right corner, then select "Scan the QR code" and scan the QR code labeled on the bottom of your camera.



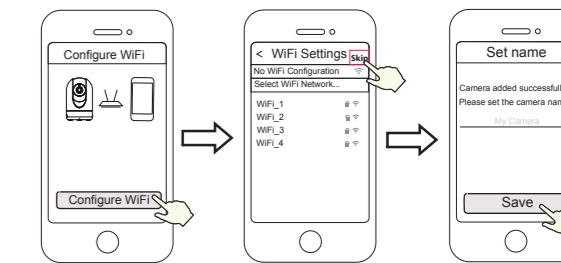
6. There are two setup methods available that you can choose from, so please pay attention carefully and follow either Method A or Method B.

Method A: Please wait for a few seconds, you can tap "Configure WiFi" in "Configure WiFi" interface, then select your WiFi network and enter your WiFi's password. After, you can set the camera name and tap "Save" in the "Set name" interface.



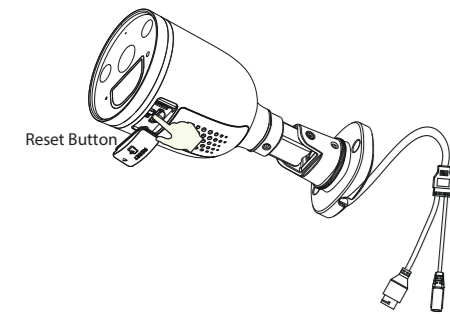
Note: It is strongly recommended that you choose to configure WiFi at this step.

Method B: Please wait for a few seconds, you can tap "Configure WiFi" in "Configure WiFi" interface, then you tap "Skip" in the "WiFi Settings" interface. After, you can set the camera name and tap "Save" in the "Set name" interface.

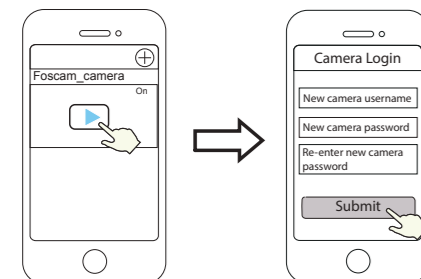


Camera added successfully and name has been set

Note: If the adding process fails, please reset your camera and try adding again according to the above method.



7. Tapping on the play button in the video box will jump to the "Camera Login" setting interface. For your security, please set a new username and password for your camera before viewing live video.



Tap "▶"

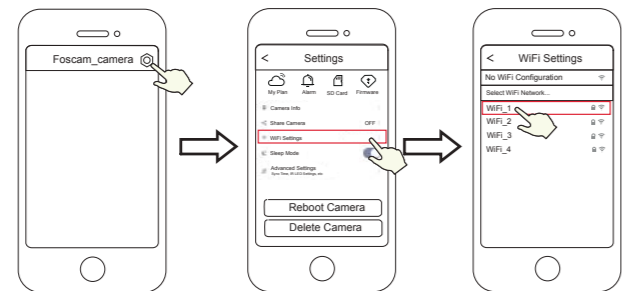
Set a new username and password

8. After completing the above steps, you can begin using your camera.

Note: If you choose installation **Method B**, please refer to the following steps for configuring WiFi. After setting your WiFi, you can unplug your network cable and the camera will work normally.

■ Configure WiFi

If you selected "Skip" in **step 6**, click play to enter the camera credentials interface > Tap the "⊙" button > tap "WiFi Settings" > select your WiFi network and enter your WiFi's password. After setting up successfully, you can view live video without the Ethernet cable.



Tap ⚙️ button

Select "WiFi Settings"

Select your WiFi Network and enter your WiFi's password

4 Other Ways to Access Your Camera

■ Foscam VMS

Foscam VMS is a new tool for PCs. It does not require plug-ins and is compatible with Windows & Mac, supporting all Foscam HD cameras and up to 36 cameras at the same time. If you would like to manage multiple cameras, we suggest you install Foscam VMS. You can download the "Foscam VMS" Windows version from foscam.com/vms, and can download the "Foscam VMS" Mac version from the APP store:

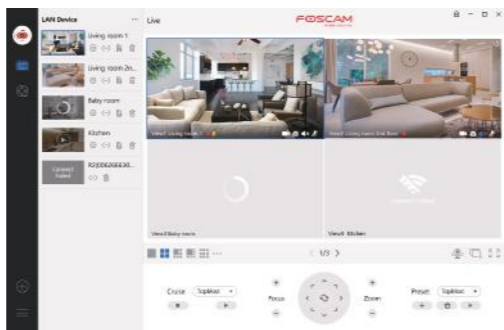
<https://apps.apple.com/cn/app/foscamvms/id1521202507?mt=12>

Note: For the best experience, please update Foscam VMS to the latest version!

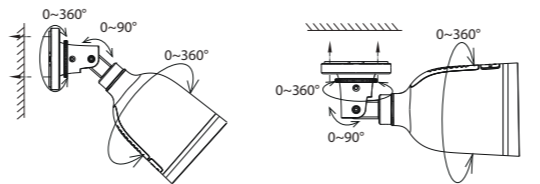
Add the IP Camera

1. Run Foscam VMS, then create a local administrator account and login.
2. Tap the "+" icon on the Foscam VMS and follow the setup wizard to add your camera.

Please visit foscam.com/downloads to view the user manual and for additional detailed steps.



5 Hardware Installation



Point the camera at the desired location and use the screws provided to mount it.

For the best product experience, we suggested installation height of Spotlight camera: 2.2m (7.22 feet), camera downward tilt angle 30°.



Please Note:

Ensure that rain or water will not reach the connector ports at the end of the pig tail wiring. These connectors are not weather-resistant.

6 Important Notice

■ Camera Username & Password

The camera username & password are used to access and manage your camera. Having a strong password can significantly improve the security of your camera.

If you have forgotten either of them, please press the "Reset" button and hold it for more than 10 seconds while the camera is powered on. After release the button. The camera will automatically reboot and the default settings will be restored.

You can then reconnect the camera by following this Quick Setup Guide.

■ Foscam Cloud Service Account Username & Password

Your Foscam Cloud service account and password may be used to access both the Foscam App and the Foscam Cloud service website. Therefore, you can register your account username & password on either one.

■ Storage Media

Your camera supports cloud, NVR (Network Video Recorder), and Micro SD card (supports FAT32 and exFAT format) storage formats. If you wish to record and play back large amounts of video, we recommend using a Foscam NVR device as well.

■ Firmware Upgrade

You can upgrade the firmware of your camera with the Foscam App by using the new "One-Key Online Upgrade" feature (Open the Foscam App and Login to the camera, select **Settings** > **Firmware Upgrade**).

You also can download the latest version to upgrade your camera from our official website foscam.com/upgrades.

■ Safety Tips

- Please ensure that the proper power supply is used before using the camera.
- Please install the camera securely using the screws provided.
- Please use this product within the temperature range. When the ambient temperature is too high or too low, it may cause product failure.
- To avoid the risk of fire or electric shock, please keep your camera connectors in a cool, dry place.
- Please keep the camera out of reach of small children.
- This product is not a toy; children should use the product under adult supervision.
- Change your default port to a greater range to help ensure the safety of your connection. How to change the default port: please visit foscam.com/downloads to view the user manual.
- Check the logs of your Foscam cameras frequently. Foscam Cameras have embedded logs reminding telling you which IP addresses are accessing the camera.

7 Product Performance

WLAN frequency range: 2412MHz - 2472MHz and 5725MHz - 5850MHz
Wireless Standard: IEEE802.11b/g/n (2.4GHz)
IEEE802.11a/n/ac (5GHz)

Power Supply: DC 12V 1.0A 12W

8 Technical Support

If you have problems with your Foscam device, please contact the reseller you purchased from, or you can e-mail the headquarter company headquarters technical support team: support@foscam.com

Your valuable comments and suggestions on improving Foscam products are welcomed!

FCC Caution:

Any Changes or modifications not expressly approved by the party responsible for compliance could void the user's authority to operate the equipment.

This device complies with part 15 of the FCC Rules. Operation is subject to the following two conditions: (1) This device may not cause harmful interference, and (2) this device must accept any interference received, including interference that may cause undesired operation.

IMPORTANT NOTE:

Note: This equipment has been tested and found to comply with the limits for a Class B digital device, pursuant to part 15 of the FCC Rules. These limits are designed to provide reasonable protection against harmful interference in a residential installation. This equipment generates, uses and can radiate radio frequency energy and, if not installed and used in accordance with the instructions, may cause harmful interference to radio communications. However, there is no guarantee that interference will not occur in a particular installation. If this equipment does cause harmful interference to radio or television reception, which can be determined by turning the equipment off and on, the user is encouraged to try to correct the interference by one or more of the following measures:

- Reorient or relocate the receiving antenna.
- Increase the separation between the equipment and receiver.
- Connect the equipment into an outlet on a circuit different from that to which the receiver is connected.
- Consult the dealer or an experienced radio/TV technician for help.

FCC Radiation Exposure Statement:

This equipment complies with FCC radiation exposure limits set forth for an uncontrolled environment. This equipment should be installed and operated with minimum distance 20cm between the radiator & your body.



CE Certificate statement Website:
<https://www.foscam.com/company/ce-certificate.html>

Exporter and Importer Information Opened to Public:
<https://www.foscam.com/company/open-information.html>

Manufacturer: Shenzhen Foscam Intelligent Technology Co., Ltd
Addr: Room 901-902, Building 1B, Xingke 1st Street, Shenzhen International Innovation Valley, Nanshan Dist., Shenzhen, 518055, China



FAQS



Foscam APP

www.foscam.com

Support email: support@foscam.com

Due to product upgrades and other reasons, this guide may be slow to update, resulting in slight inconsistencies with the official website information. Please take the official website (www.foscam.com) information as the current standard.