

Quick Setup Guide



For detailed manuals, tools, etc., please visit foscam.com/downloads.

V2.0
305503001053
- 1 -

1 Security Tips

- Foscam cameras and NVRs require good security practices to safeguard your privacy. You should regularly change your camera or NVR password which is the combination of numbers, letters and symbols.
- You should update your camera or NVR regularly. Make sure your camera or NVR has the latest firmware installed for your specific model and better experience.
- Please keep the device horizontally and avoid inclination or inversion.
- Do not install the NVR in humid and dusty environment.
- Put the NVR in drafty environment in case of ventilation port being blocked.
- Don't touch the power switch with wet hand or damp items to avoid shock.
- Do not splash liquid or metal filing on the NVR To avoid short-circuit fault or blaze.
- Explosion may happen because of improper replacement of battery, do not replace it by yourself; If you need, make sure it is the same type of battery. And do not open or repair the battery.
- Do not take the device apart when it is operating (or connecting to power).
- Please use suitable and professional hard disk to ensure continues and stable recording.
- Lightning protection is needed when device is connected to communication cables.
- Check the power supply to avoid damage because of voltage mismatch.
- Make sure the NVR working within suitable temperature and humidity environment.
- Short circuit may occur when dust become wet on circuit

- 2 -

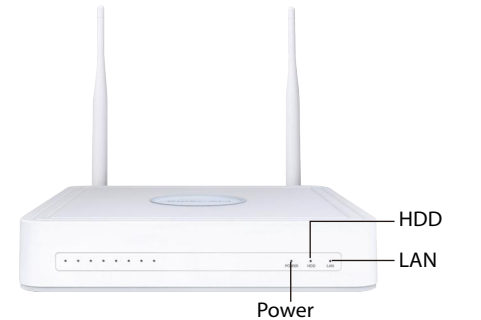
board. Please clean the dust on connectors and NVR case.

- Operating Temperature: 0°C ~ 50°C (32°F ~ 122°F).

2 NVR Kit Contents

8-Channel NVR	
4 x Bullet IP Cameras	1.5m (5 ft) Ethernet Cable
4 x Power Adapters for Cameras	1 x Power Adapter for NVR
Quick Setup Guide	Warranty Card
USB Mouse	Mounting Screws

3 NVR Rear Panel



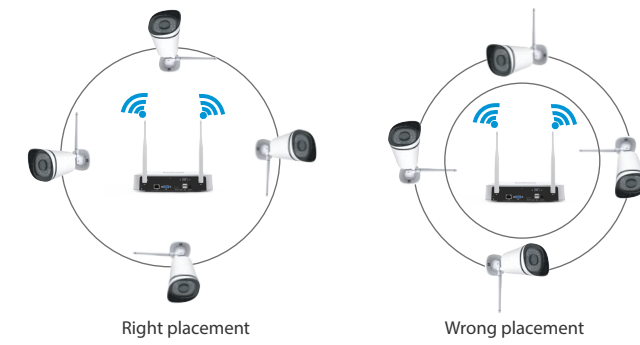
- 3 -

4 Wireless Connectivity



- 4 -

5 Placement of Wireless IP Camera

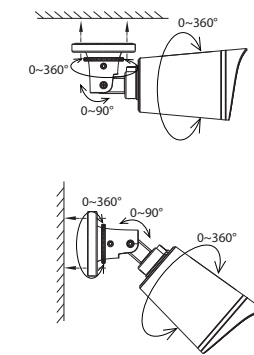


The shape of wireless NVR signal coverage is a ball, antenna is located in the center. Signal is strong around antenna, and weak in the dent area of the 2 antennas.
Based on the signal spreading ways, please make the wireless IP Camera keeping parallel or tangent with wireless NVR, which ensure stable signal transmission and better picture quality.

- 5 -

6 Camera Installation

Place the cameras in your preferred locations and use the included screws to mount them.



Important Note:

When installing the cameras please ensure that the connection ports at the end of the pig tail wiring are not exposed, as they are not weather-resistant.

- 6 -

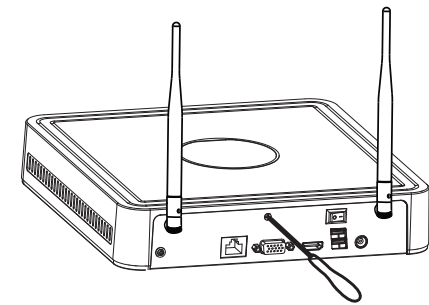
7 Hard Disk Installation

If the factory NVR already has a hard drive, there is no need to reinstall it.

WARNING

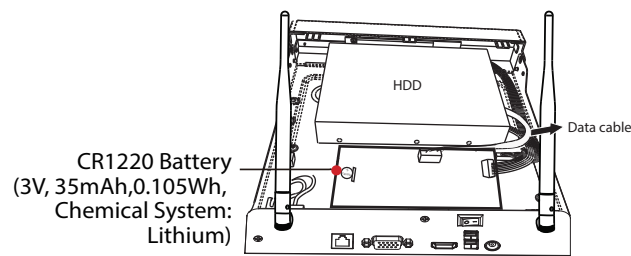
- Before installing a hard disk drive (HDD), please make sure the power is disconnected from the NVR.
- It is recommended that a hard drive be used in 7200 high-speed or above.

- Remove the cover from the NVR by unfastening the screws on the rear and bottom.



- 7 -

- Connect one end of the data cable and power cable to the motherboard of NVR and the other end to the HDD.

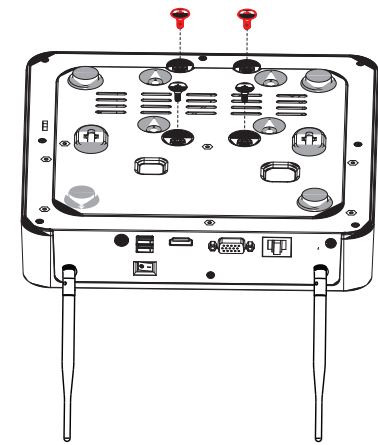


CAUTION:

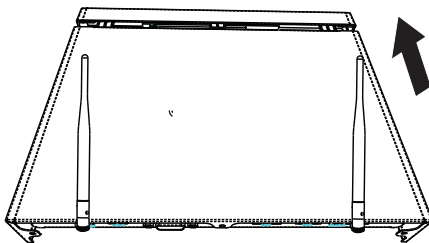
- Must be disposed of properly, always follow the local waste and recycle laws when you get rid of the used battery.
- May explode if damaged or disposed of in fire.
- Do not short-circuit.
- Do not disassemble
- Do not use if soaked into water.
- Do not attempt to disassemble, open or service the battery. Non rechargeable.
- If the battery level is low, please replace the button battery with a new one according to the model after disassembling in steps 1 and 2.

- 8 -

- Place the HDD on the bottom of the device and then fasten the screws on the bottom to fix the HDD.

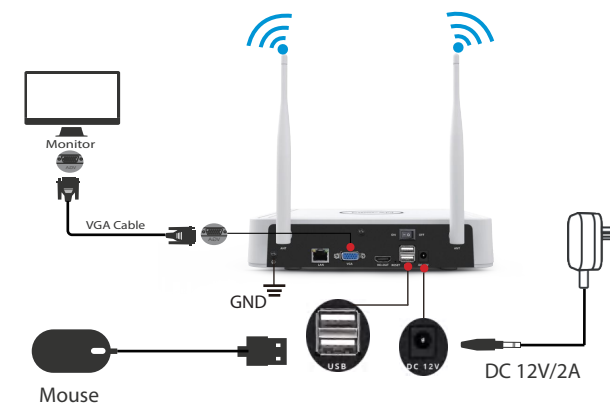
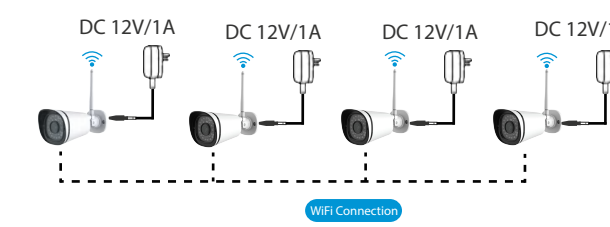


- Re-install the cover of the NVR and fasten screws.



- 9 -

8 Powering Up



Please make sure the voltage of power supply is matched with wireless NVR, and ground connection work well in socket. Connect the NVR and cameras as shown in the figures above. Once the NVR is plugged in, press the power switch located on the rear panel.
After the NVR starts up successfully, the Power LED indicators will turn green, it means system runs smoothly.

- 10 -

9 Software Operation

1. Log In

- Turn on the power switch on the rear panel. After the NVR starts up successfully, the power LED and HDD LED indicators will turn green. The startup page is displayed on the screen.
- Change password . For your security, please set a new password for your NVR before Log In.



- Login page. Enter the Username and Password, then click on the **OK** button.



- After modifying the password, you will be taken to the Setup Wizard.

- 11 -

2. Setup Wizard

The Setup Wizard can walk you through some important settings on the NVR.

- Setting the time.



- Format HDD. Click the **Format** button to set up the HDD. Note that this will delete all files on the HDD. HDD Full Setting. Select Stop Record and Overwrite.

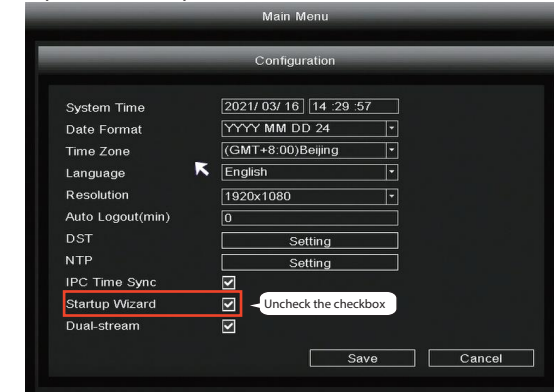


- 12 -

- P2P. If you want to know the UID of the device, please scan the QR code. If you don't want to use the Setup Wizard next time, uncheck the Setup Wizard checkbox. Click the **Finish** button to complete the setup wizard.



or Right-click→ **Main Menu** → **Configuration** → uncheck the **Setup Wizard** checkbox. Click the **Finish** button to complete the setup wizard.



- 13 -

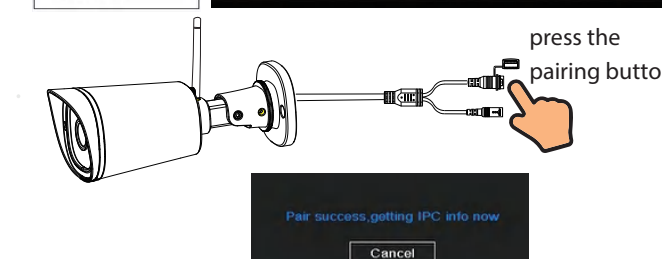
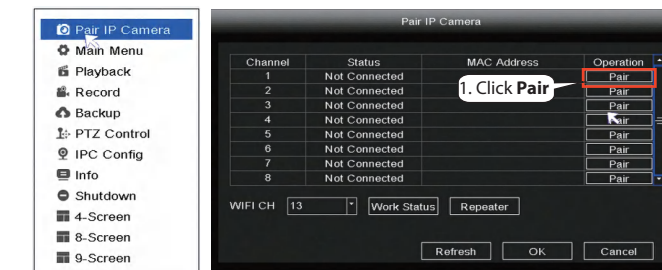
The live view interface will show you the video feed of each IP Camera.

3. NVR adds IP Camera method

Note: The NVR and IP Camera are already paired. If you need to match more cameras, please refer to the following steps. F19911W is supported in this kit, besides the battery camera the other Foscam models can be added by LAN.

Add F19911W:

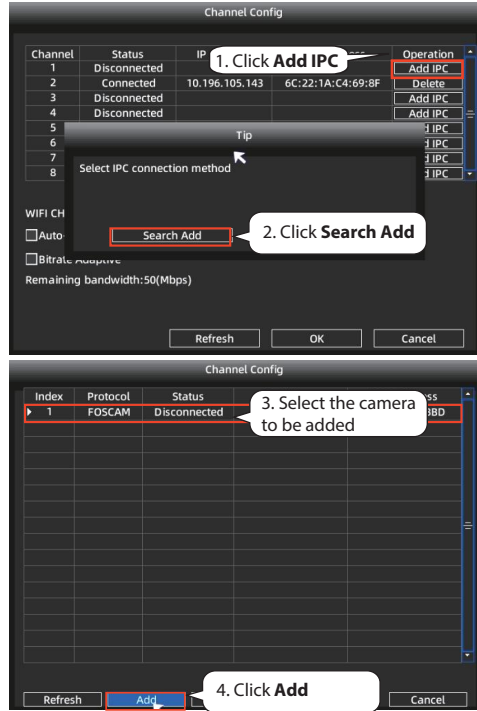
- Right-click on main interface, select **Pair IP Camera**.
- Click **Pair** and press the pairing button of the camera tail cable at the same time, until it prompts that the pairing is successful.
- When finished code matching, The live view interface will show you the video feed of each IP Camera.



- 14 -

Add Other Foscam Camera:

- ① Right-click on main interface, select **Channel config**.
- ② Click **Add IPC** and then click **Search Add**.
- ③ Select the Camera to be added.
- ④ Click **Add** and enter the username and password for the camera, then click on the **Save**.
- ⑤ When finished added, the live view interface will show you the video feed of each IP Camera.



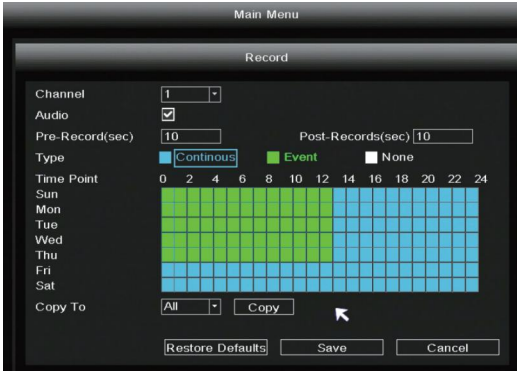
-15-

4. Record and Playback

- ① Scheduled Record: Right-click → **Main Menu** → **Record** → choose recording channel → **Save** (Actually, the Wi-Fi NVR system have default set 24h scheduled recording).



If you want to modify it to alarm recording, please use the left mouse button to select the time (turned to green), if the other channels operate in the same way, select **copy**.



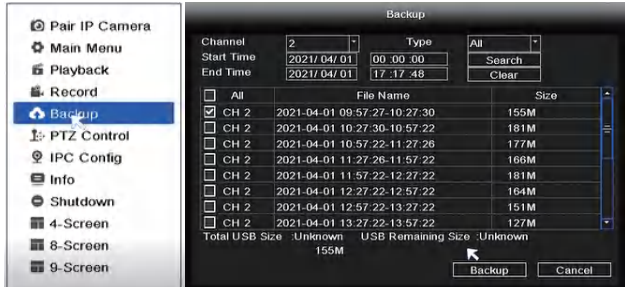
-16-

- ② Playback: Right-click → **Main Menu** → **Playback** → choose channel and date → click timeline to check record.



5. Backup

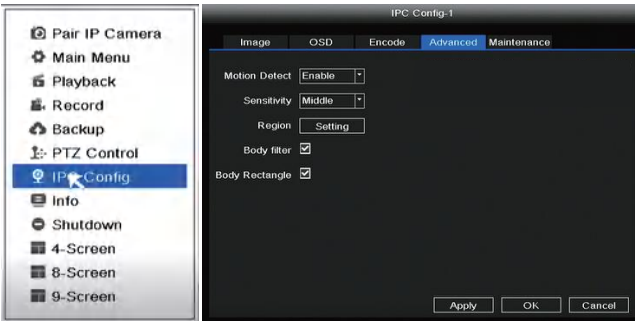
Insert U disk to NVR USB port → Right-click → **Main Menu** → **Backup** → choose channel, type and time → **Search** → select target file → **Backup**
Note: If target file can not be searched out, please click **Empty** → **Add**. Please remove the files which is no need before backup. Ensure insert device (like USB) in 30 second, as system reserved searching time for it is 30 second.



-17-

6. Motion Detection Record

Right-click → **Main Menu** → **IPC Config** → **Advanced** → **Motion Detect** → Choose **Enable** → Set Sensitivity & Region & Body Filter & Body Rectangle → **Apply**.



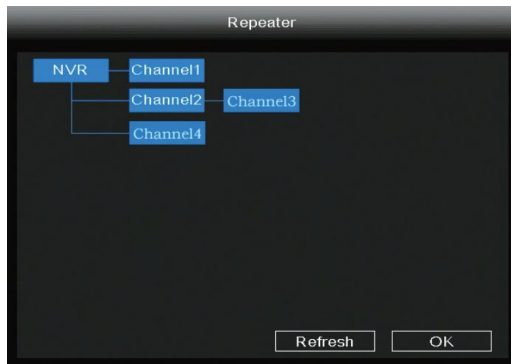
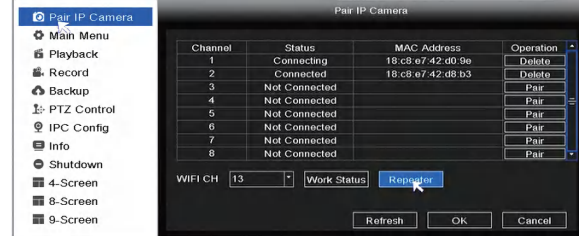
7. Auto Bridge

By new mesh network auto-bridging function, without any manual setting, wireless camera in further area will have a judgment about the WIFI signal and auto connect to the camera which have a better WIFI signal, to achieve more stable and reliable video transmission.
Auto bridging is designed to expand the coverage area of wireless signal, instead of enhancing the signal. When camera is a little far away from NVR, or there are too many interference factors/sources between them, camera in further area will auto bridge/connect to the one nearby to transmit the video data.

-18-

- ① Right click → **Pair IP Camera** → **Repeater**.

- ② Then, bridging relationship will be showed on the interface automatically.



10 Foscam App

1. You can also simply go to the App Store or Google Play and search for the term **"Foscam"**. Download the APP to your smartphone, or scan the QR Code on the below, it will take you to the download page to install the **Foscam APP**.

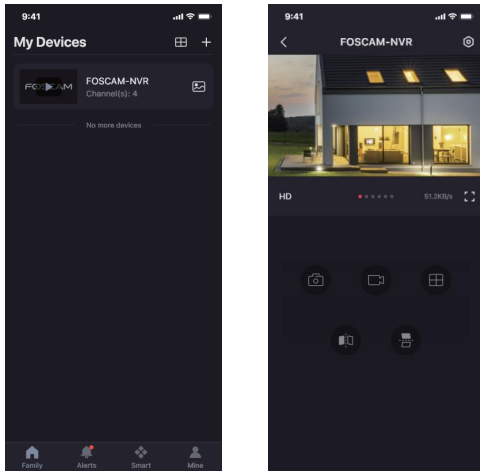
-19-



2. Run the Foscam APP, and then register for a Foscam account.

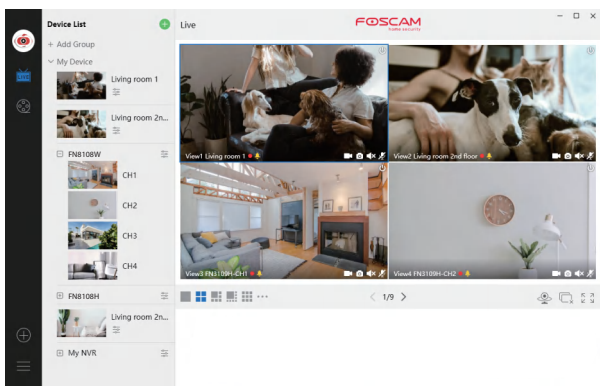
3. Device Adding: Once logged in, you can tap the "+" button on the APP, after that scan the QR code, which is located at the bottom of your NVR.

4. Preview: click device in list to enter preview interface, select a channel to view it's picture, as follow shows:



-20-

3. Preview: click device in Lan Device list to enter preview interface, select a channel to view it's picture, click ▶ to enter, as follow shows:



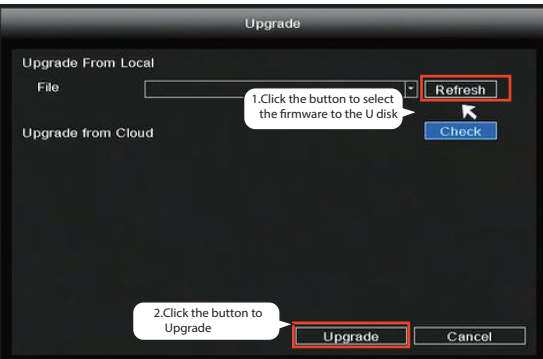
12 Upgrade

1. You can upgrade your NVR and cameras system with local Software.

NVR Upgrade:

Download the firmware to the U disk → Insert U disk to NVR USB port → Right-click → **Main Menu** → **Upgrade** → click **Refresh** → click **Upgrade** to upgrade your NVR.

-22-



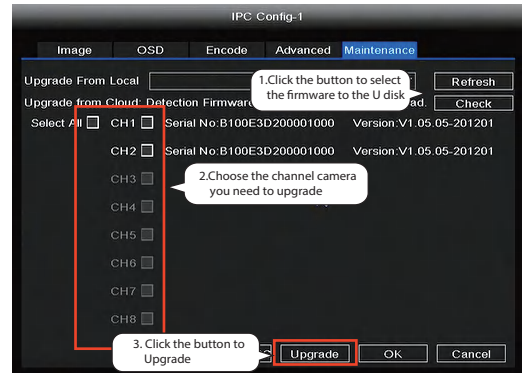
Note:

Don't shut down the power during upgrade. After upgrading, NVR restarts.

IPC Upgrade:

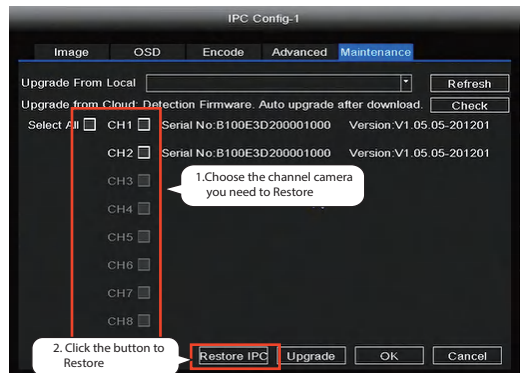
Download the firmware to the U disk → Insert U disk to NVR USB port → Right-click → **Main Menu** → **IPC Config** → **Maintenance** → click **Refresh** → click **CH** to update this camera or click **Select All** to upgrade your all cameras.

-23-



IPC Restore default:

Right-click → **Main Menu** → **IPC Config** → **Maintenance** → click **CH** to restore default this camera or click **Select All** to restore default your all cameras.



-24-

Note:

- ① The upgrade file must be placed under the root directory of the U disk.
- ② Don't lose power for during upgrade.

13 Product Performance

WLAN frequency range: 2412 MHz -2484 Mhz.

Maximum transmission power: < 20dBm

Wireless Standard: IEEE 802.11b/g/n/x

Power Supply: DC 12V 2.0A 24W (NVR)

DC 12V 1.0A 12W (IPC)

14 Technical Support

If you have problems with your Foscam device, please contact the reseller you purchased from, or you can e-mail the headquarters technical support team: support@foscam.com

Your valuable comments and suggestions on improving Foscam products are welcomed!

-25-

Warning

To assure continued compliance, any changes or modifications not expressly approved by the party responsible for compliance could void the user's authority to operate this equipment.

FCC Statement

This equipment complies with Part 15 of the FCC Rules.

Operation is subject to the following two conditions:

- (1) This device may not cause harmful interference, and
 - (2) This device must accept any interference received, including interference that may cause undesired operation.
- NOTE: This equipment has been tested and found to comply with the limits for a Class B digital device, pursuant to part 15 of the FCC rules. These limits are designed to provide reasonable protection against harmful interference in a residential installation. This equipment generates, uses and can radiate radio frequency energy and, if not installed and used in accordance with the instructions, may cause harmful interference to radio communications.

However, there is no guarantee that interference will not occur in a particular installation. If this equipment does cause harmful interference to radio or television reception, which can be determined by turning the equipment off and on, the user is encouraged to try to correct the interference by one or more of the following measures:

- Reorient or relocate the receiving antenna.
- Increase the separation between the equipment and receiver.
- Connect the equipment into an outlet on a circuit different from that to which the receiver is connected.
- Consult the dealer or an experienced radio/TV technician for help.

-26-

11 Foscam VMS

Foscam VMS is a new tool for PC. It does not require plug-ins and is compatible with Windows & Mac, It supports all Foscam HD cameras and up to 36 cameras at the same time. If you would like to manage multiple cameras, we suggest you install the Foscam VMS. You can download the "Foscam VMS" from foscam.com/vms, and can download the "Foscam VMS" Mac version from the APP store: <https://apps.apple.com/cn/app/foscamvms/id1521202507?mt=12>

Note: For the best experience, please update Foscam VMS to the latest version!



Add the NVR

1. Run Foscam VMS, then you can create a local administrator account or a Foscam account and login.
 2. Tap the "+" button on the Foscam VMS and follow the setup wizard to add your NVR.
- Please refer to the user manual for more detailed adding steps.

-21-



CE Certificate statement Website:
<https://www.foscam.com/company/ce-certificate.html>

Exporter and Importer Information Opened to Public:
<https://www.foscam.com/company/open-information.html>

Manufacturer: Shenzhen Foscam Intelligent Technology Co., Ltd
Addr: Room 902, Building 1B, Shenzhen International Innovation Valley, Xingke 1st Street, Nanshan District, Shenzhen, Guangdong, China, 518055
Support email: support@foscam.com



FAQS



Foscam APP



Facebook

www.foscam.com

Due to product upgrades and other reasons, this guide may be slow to update, resulting in slight inconsistencies with the official website information. Please take the official website (www.foscam.com) information as the current standard.

-27-

-28-