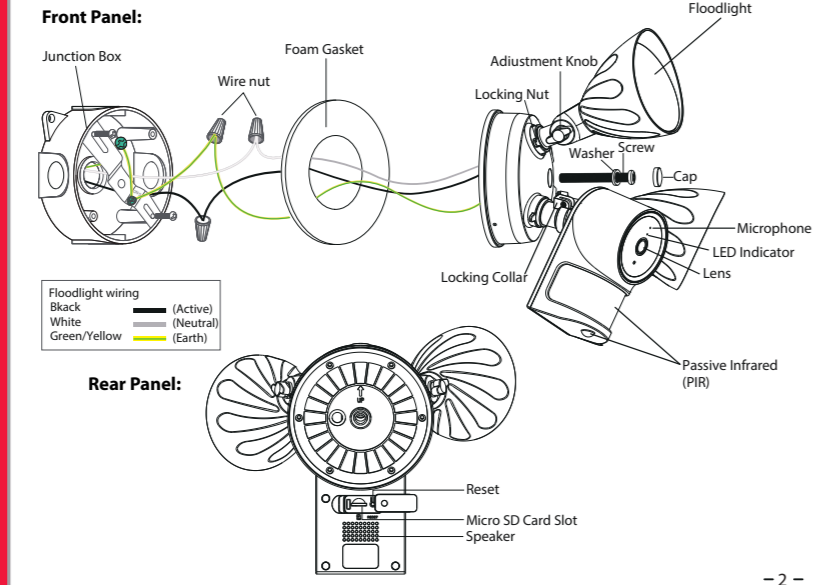




Quick Setup Guide

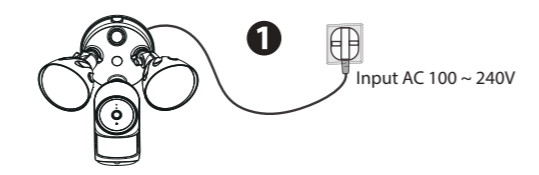
Support email: support@foscam.com
V1.0
30550300573

Installation Example Diagram



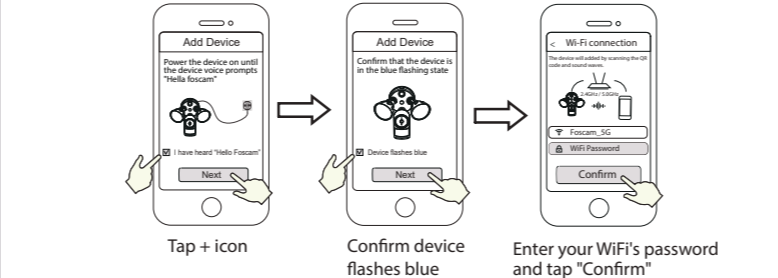
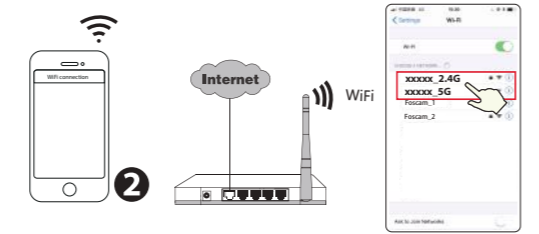
WiFi connection

1. Plug in the power and wait for a few seconds until hearing the "Ready for WiFi configuration".

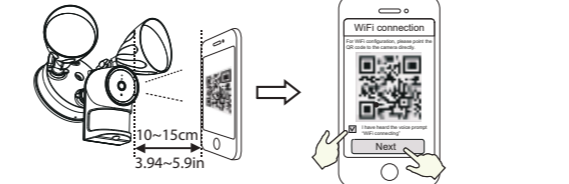


Tips: If you didn't hear the voice prompt, open the port cover on the back of the camera. Press and hold the Reset button for about 10 seconds to reset the camera.

2. Make sure that your smart phone is connected to your WiFi router.

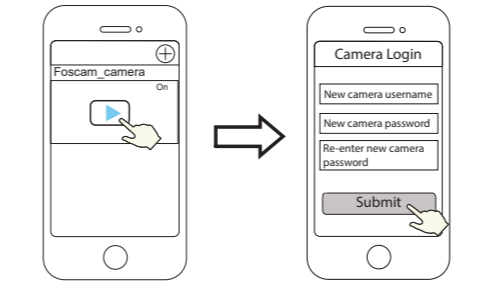


6. Please scan the QR code on the phone screen with the camera, then you will hear a voice prompt say "WiFi connecting". Select the checkbox and tap "Next".



Tips: Please place the QR code on the phone screen about 10 to 15cm (3.94 to 5.9in) away, and if you encounter difficulties you can try to move the screen slowly around 10 - 15cm (3.94 - 5.9in).

8. Tapping on the play button in the video box will jump to the "Camera Login" setting interface. For your security, please set a new username and password for your camera before viewing live video.



9. After completing the above steps, you can begin using your camera.

2. Access the area you want to be lit and the area you need camera coverage, and install your Floodlight Camera on the front wall or on the side wall. The side wall is highly recommended to get an optimal coverage for the floodlight and camera.

*The motion sensor is more sensitive to the movements across the camera field of view than movements towards or away from the sensor. We highly recommend you install the floodlight camera on the side wall.

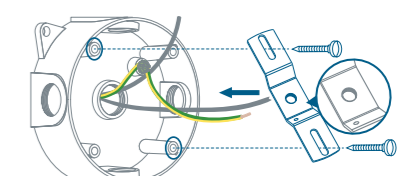
For the best product experience, we suggested installation height of Spotlight camera: 2.5m (8.2 feet), camera downward tilt angle 15°.



Installing the Junction Box

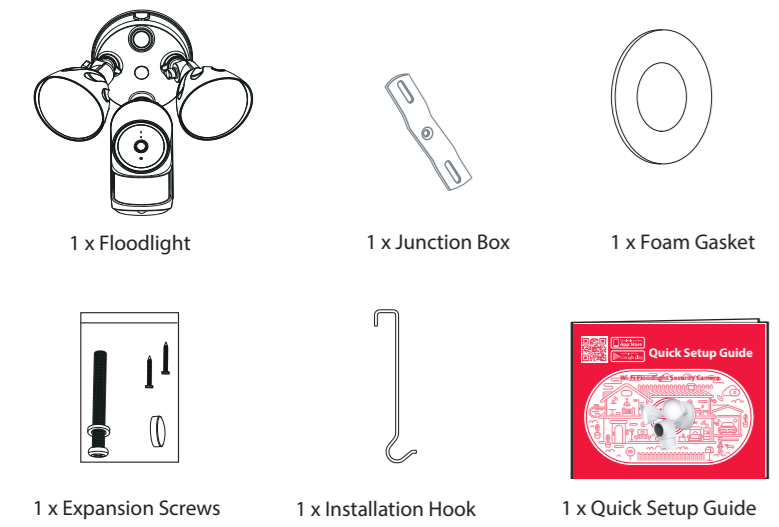
1. Remove the old Floodlight from the junction box and install the mounting plate to the junction box.

Tip: The junction box and existing electrical wires are required to Floodlight Camera installation.



Warning: The concaved side of the mounting plate must face outwards.

What's in the Box

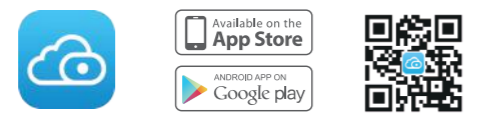


Add Device: Connection via the Foscam App (Recommended)

It is strongly recommended that you complete the "add devices" process on the Foscam app before the Floodlight hardware is installed.

Before You Get Started

Scan the QR code below to download and install the Foscam APP.



To ensure a smoother video experience on your smart phone, it is recommended that your smart phone meet the following specifications:

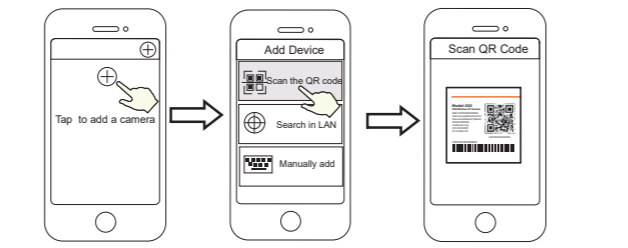
- iOS: version 11 or higher.
- Android: 4.1 or higher, using a device with a Graphics Processing Unit (GPU).

Note: For the best experience, please update the APP to the latest version!

Tips: The camera supports dual-band 2.4GHz and 5GHz WiFi networks, so you can choose the channel with the stronger signal to use. For example, choose your SSID: XXXXX_2.4G or XXXXX_5G.

3. Open the foscam APP and please sign up for a Foscam account, or sign in if you have one already.

4. After logging into Foscam APP, select "Tap to add a camera" or "+" icon on the upper right corner, then select "Scan the QR code" and scan the QR code that labeled at the bottom of your camera.

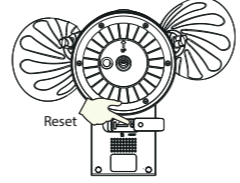


7. Wait a few seconds until the camera notifies you that the "Wireless connection succeeded", which means your camera has connected to your WiFi successfully. After, you can set the camera name and tap "Save" in "Set name" interface.



Camera added successfully and the name has been set

Note: If the process of adding a camera fails, please reset your camera and try adding again according to the above method. Open the port cover on the back of the camera. Press and hold the Reset button for 10 seconds.

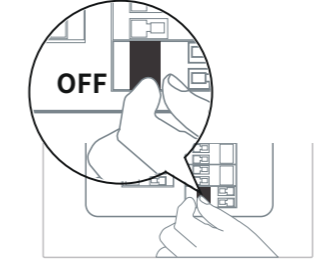


Floodlight Installation Getting Started

Note: Make sure you have installed the Foscam App, and have scanned the camera QR code and completed the "add device" process in the app before beginning the hardware installation process.

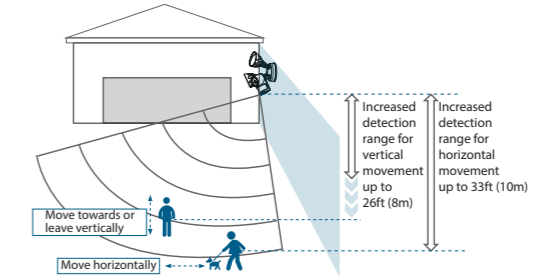
This unit is designed to be mounted on a standard wiring junction box and requires connection to a 100 ~ 240VAC power supply. For optimum results, it is suggested that the installation height of the product should be 8.2ft (2.5m) and the camera should be tilted 15° downward.

1. Shut power off at the breaker in your house. Switch on/off the lights to make sure the electricity in your house is properly shut off.

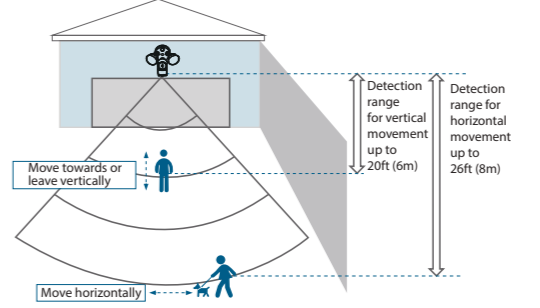


Note: Risk of shock, disconnect power before servicing. Contains no user serviceable parts. This product must be installed by a licensed electrician in some countries. Check local regulations.

On the side wall:

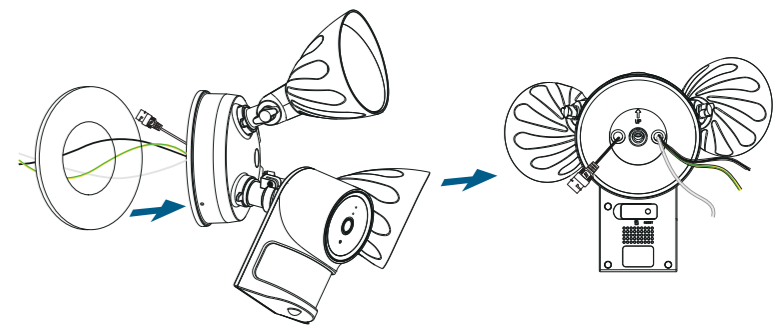


On the front wall:



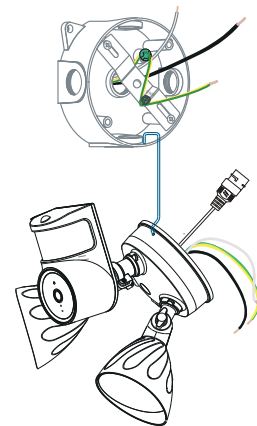
Floodlight can be used indoors and outdoors.

2. Peel the backing of the adhesive foam gasket and stick it to the back of the floodlight unit.

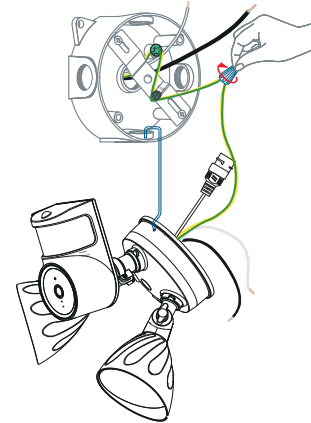


Hang Floodlight Camera

1. Hang Floodlight Camera on the junction box with the hook provided.

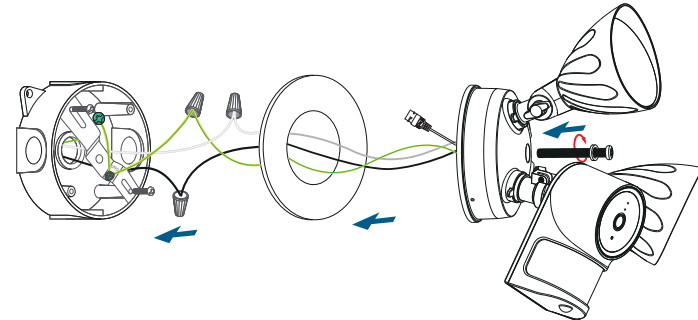


3



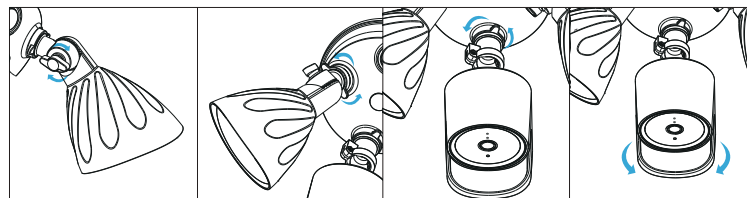
Mount Floodlight Camera On the Junction Box

1. Align the hole on the junction box with the opening in the Floodlight Camera.
2. Screw the central screw through the center of Floodlight Camera to mount it in position.



Adjusting Floodlight Camera

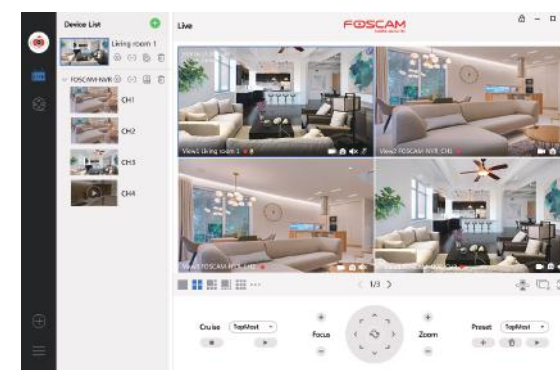
1. After installation is complete, loosen the adjustment screws on the camera and floodlight to adjust the camera and light position to the desired angles.
2. Tighten the screws firmly to complete the installation.



Add the IP Camera

1. Run Foscam VMS, then create a local administrator account and login.
2. Tap the "+" icon on the Foscam VMS and follow the setup wizard to add your camera.

Please visit foscam.com/downloads to view the user manual and for additional detailed steps.



Firmware Upgrades

You can upgrade the firmware of your camera with the Foscam App by using the new "One-Key-Online Upgrade" feature (Open the Foscam App and Login to the camera, select "Settings" > "Firmware Upgrade").

You also can download the latest version to upgrade your camera from our official website foscam.com/updates.

Safety Tips

- Please ensure that the proper power supply is used before using the camera.
- Please install the camera and bracket securely using the screws provided.
- Please use this product within the temperature range -4°F~122°F (-20°C~50°C). When the ambient temperature is too high or too low, it may cause product failure.
- To avoid the risk of fire or electric shock, please keep your camera connectors in a cool, dry place.
- Please keep the camera out of reach of small children.
- This product is not a toy; children should use the product under adult supervision.
- Change your default port to a greater range to help ensure the safety of your connection. How to change the default port: please visit foscam.com/downloads to view the user manual. Check the logs of your Foscam camera frequently. Foscam camera have embedded logs telling you which IP addresses are accessing the camera.
- The floodlight source of this luminaire is not replaceable; when the floodlight source reaches its end of life the whole luminaire shall be replaced.

FCC Caution:

Any Changes or modifications not expressly approved by the party responsible for compliance could void the user's authority to operate the equipment.

This device complies with part 15 of the FCC Rules. Operation is subject to the following two conditions: (1) This device may not cause harmful interference, and (2) this device must accept any interference received, including interference that may cause undesired operation.

IMPORTANT NOTE:

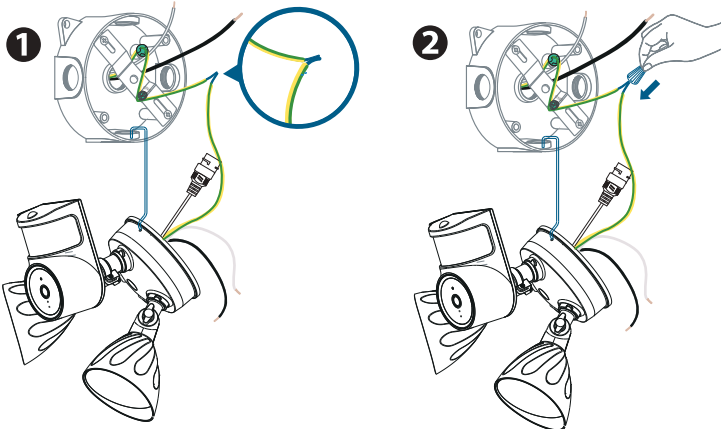
Note: This equipment has been tested and found to comply with the limits for a Class B digital device, pursuant to part 15 of the FCC Rules. These limits are designed to provide reasonable protection against harmful interference in a residential installation. This equipment generates, uses and can radiate radio frequency energy and, if not installed and used in accordance with the instructions, may cause harmful interference to radio communications. However, there is no guarantee that interference will not occur in a particular installation. If this equipment does cause harmful interference to radio or television reception, which can be determined by turning the equipment off and on, the user is encouraged to try to correct the interference by one or more of the following measures:

- Reorient or relocate the receiving antenna.
- Increase the separation between the equipment and receiver.
- Connect the equipment into an outlet on a circuit different from that to which the receiver is connected.
- Consult the dealer or an experienced radio/TV technician for help.

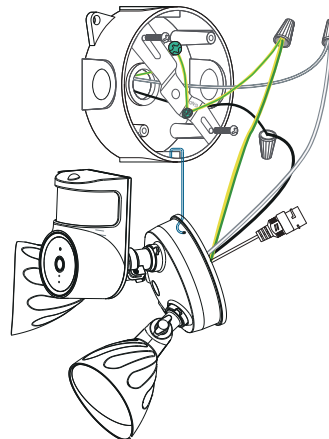
FCC Radiation Exposure Statement:

This equipment complies with FCC radiation exposure limits set forth for an uncontrolled environment. This equipment should be installed and operated with minimum distance 20cm between the radiator & your body.

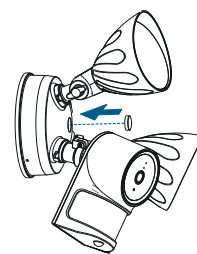
2. Connect both ground wires (yellow or green) from the junction box and Floodlight Camera, join the wires by using a wire nut. If the existing ground wire has been connected to the junction box or there's no ground wire, connect the ground wire of the Floodlight Camera to the junction box or mounting plate directly.



3. Use wire nuts to connect Floodlight Camera wires to the rest of the wires from junction box. Connect the white wire on the Floodlight Camera to the white wire (neutral) from junction box. Connect the black wire on the Floodlight Camera to the black wire (hot) from junction box.



3. Cover the central screw with the central screw cap to prevent it from rusting.



Other Ways to Access Your Camera

Foscam VMS

Foscam VMS is a new tool for PCs. It does not require plug-ins and is compatible with Windows & Mac, supporting all Foscam HD cameras and up to 36 cameras at the same time. If you would like to manage multiple cameras, we suggest you install Foscam VMS. You can download the "Foscam VMS" Windows version from foscam.com/vms, and can download the "Foscam VMS" Mac version from the APP store: <https://apps.apple.com/cn/app/foscamvms/id1521202507?mt=12>.

Note: For the best experience, please update Foscam VMS to the latest version!

Important Notice

Camera Username & Password

The camera username & password are used to access and manage your camera. Having a strong password can significantly improve the security of your camera.

If you have forgotten either of them, please press the "Reset" button and hold it for more than 10 seconds while the camera is powered on. After hearing the voice prompt, release the button. The doorbell will automatically reboot and the default settings will be restored.

You can then reconnect the camera by following this Quick Setup Guide.

Foscam Cloud Service Account Username & Password

Your Foscam Cloud service account and password may be used to access both the Foscam App and the Foscam Cloud service website. Therefore, you can register your account username & password on either one.

Storage Media

Your camera supports cloud, NVR (Network Video Recorder), and Micro SD card (only supports FAT-32 format) storage formats. If you wish to record and play back large amounts of video, we recommend using a Foscam NVR device as well.

Product Performance

WLAN frequency range: 2412MHz - 2472MHz and 5725MHz - 5850MHz
Wireless Standard: IEEE802.11b/g/n (2.4GHz) / IEEE802.11a/n/ac (5GHz)
Protected dimensions: 320(L)x 170(W)x220(H) (W)mm
Weight: 1260g
Power Supply: AC 100 - 240V ~ 50/60 Hz
Maximum protected area: 0.0252m²

Technical Support

If you have problems with your Foscam device, please contact the reseller you purchased from, or you can e-mail the company headquarters technical support team: support@foscam.com

Your valuable comments and suggestions on improving Foscam products are welcomed!



FAQ



Foscam APP



Installation video on YouTube

FOSCAM
home security



CE Certificate statement Website:
<https://www.foscam.com/company/ce-certificate.html>

Exporter and Importer Information Opened to Public:
<https://www.foscam.com/company/open-information.html>

Manufacturer: Shenzhen Foscam Intelligent Technology Co., Ltd
Addr: Room 901-902, Building 1B, Xingke 1st Street, Shenzhen International Innovation Valley, Nanshan Dist., Shenzhen, 518055, China

www.foscam.com

Support email: support@foscam.com

Due to product upgrades and other reasons, this guide may be slow to update, resulting in slight inconsistencies with the official website information. Please take the official website (www.foscam.com) information as the current standard.