

2.4GHz

Wireless Keyboard

Customer:

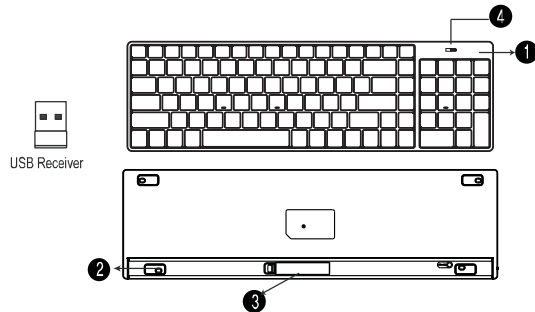
Description: 2.4GHz Wireless Keyboard

Model No.: WK-718+R95

Issue Date: Mar. 27, 2011

Keyboard

1	Top cover	3	Batteries Insertion Cover (Open to upper direction)
2	Bottom cover	4	Lower Power Indicator (Red)

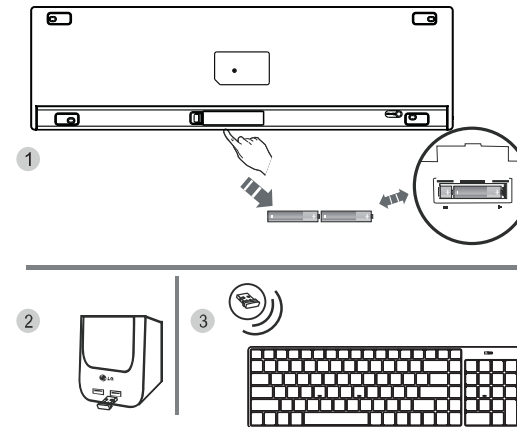


* There is removed Num lock, Caps Lock, Scroll Lock notification LED to extend longer life time without exchanging batteries because the LEDs consume the power highly.

To Use the products

- 1) Insert the batteries under the batteries insertion cover following +/- direction which are marked under the cover.
- 2) Insert the Receiver at the Computer and turn on the computer.
After power on the computer completely insert the receiver and wait 5 ~ 10 sec while the program install. If your computer already on just insert the receiver at the USB Port and follow just like upper situation.
- 3) Connect between receiver and products

* Important: Please wait until a message or a window appears and than follow the instructions to the completion of the driver installation.



use manual

If the products do not work normally please follow below

- If the product batteries warning LED is blinking red, please replace the batteries.
Even the product does not work normally:
- 1) Make sure the power is on and try to type any key on the keyboard
- 2) Check the batteries capacity and installation
- 3) Check receiver installation
Control panel -> System -> Hardware -> manage device -> Human interface device
There are USB Human interface device .
- 4) If not, you should change the port and retry to install the program

Batteries Replacement indicator LED and low power mode for prolonged use

After being used for quite a while, the batteries voltage drops.
The lower power indicator LED
also turns on Red at about 90% of batteries power used every 5 ~ 10 second.
When the LED is turned on, replace the batteries as soon as possible.

※ "Electricity of the enclosed batteries begins to be discharged little by little immediately after production.
Therefore, according to when the products are opened, batteries life could be shorter than expected.
The company requests users' understanding of such electricity discharge"
"Based on the environment the batteries life can be shorter such as hard to be connected wireless."

This device complies with part 15 of the FCC rules. Operation is subject to the following two conditions: (1) this device may not cause harmful interference, and (2) this device must accept any interference received, including interference that may cause undesired operation.

NOTE: The manufacturer is not responsible for any radio or TV interference caused by unauthorized modifications to this equipment. Such modifications could void the user's authority to operate the equipment.

NOTE: This equipment has been tested and found to comply with the limits for a Class B digital device, pursuant to part 15 of the FCC Rules. These limits are designed to provide reasonable protection against harmful interference in a residential installation. This equipment generates uses and can radiate radio frequency energy and, if not installed and used in accordance with the instructions, may cause harmful interference to radio communications. However, there is no guarantee that interference will not occur in a particular installation.

If this equipment does cause harmful interference to radio or television reception, which can be determined by turning the equipment off and on, the user is encouraged to try to correct the interference by one or more of the following measures:

- Reorient or relocate the receiving antenna.
- Increase the separation between the equipment and receiver.
- Connect the equipment into an outlet on a circuit different from that to which the receiver is connected.
- Consult the dealer or an experienced radio/TV technician for help.