

Factory ADD: R205-303,B Building, No.3063,Dongxiao Road, Luohu Area, Shenzhen city,
Guangdong province, China

TEL: 0755-25420596 FAX: 0755-25422145

[Http://www.bohuagps.com](http://www.bohuagps.com)

E-mail:bohua1016@126.com

WIFI Antenna Specification

WIFI-BH026

(i) WIFI Antenna

Center Frequency	2400-2483MHZ
Band width	100MHz
V.S.W.R	1.50:1
Impendence	50 ohm
Typical Gain	3dBi+/-1dB@2400MHZ

ii) Mechanical

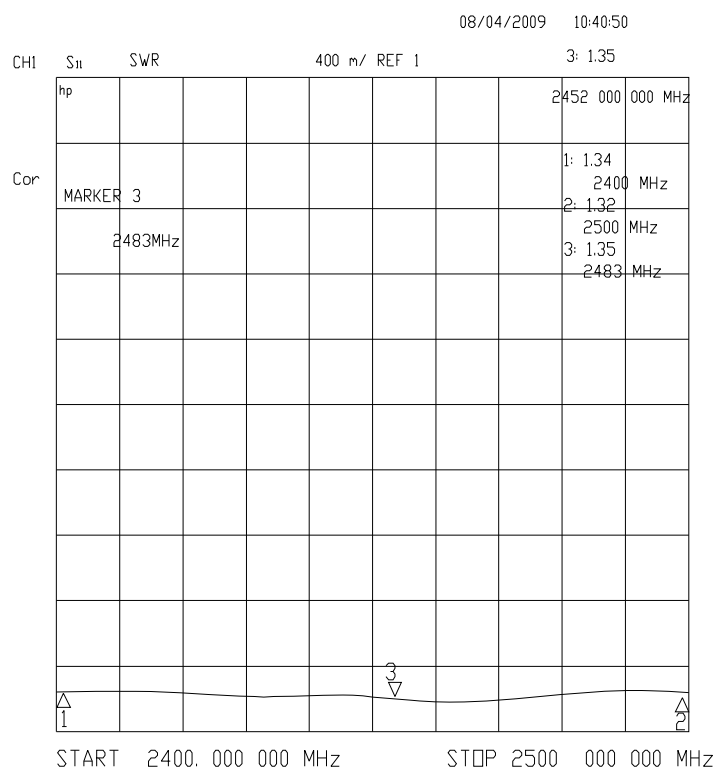
Weight	<230gram
Size	Φ 34*107mm
Connector	SMA male
Cable	2m length RG174/U
Rated Power	50W

(iii) Environmental

Working Temp.	-40℃~+85℃
Storage Temp.	-45℃~+100℃
Vibration	Sine sweep 1g(0-p)10~50~10Hz each axis
Humidity	Humidity95%~100%RH
Weatherproof	100%Waterproof

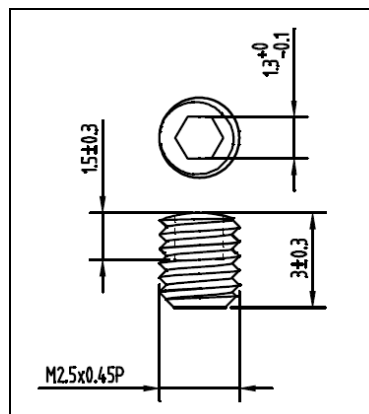


(MODULE: WIFI-BH026)



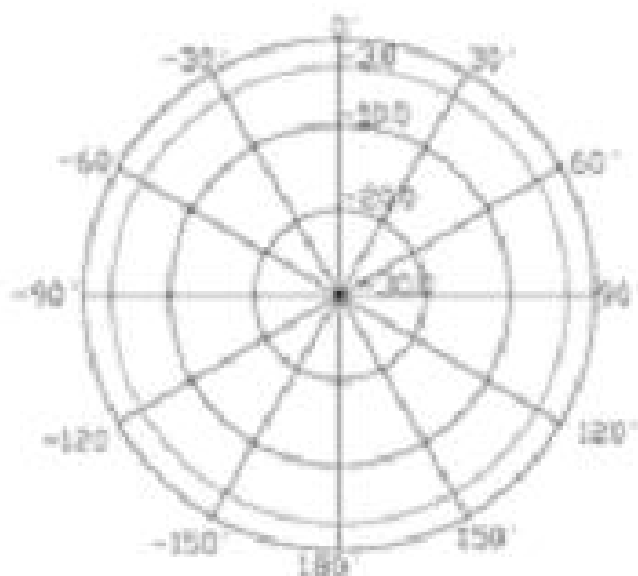
Description of the collar

A collar will be added on antenna connector with camera. This collar is holding the antenna and it was fixed by a special screw. So the antenna is not detachable by the end user and comply with FCC 15.203.

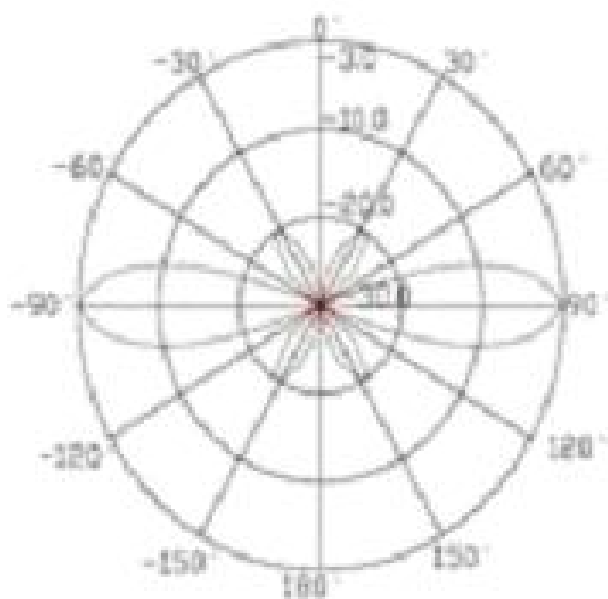


The screw

Pattern



Horizontal beam width



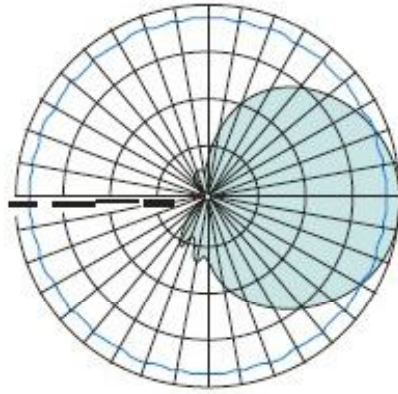
Vertical beam width



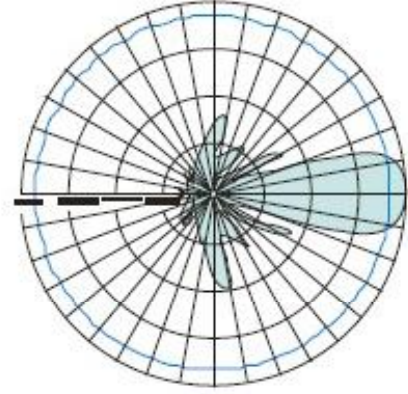
波华 Bohua

Shenzhen Bohua Electronic Co.,Ltd

Bohua Electronics (HK) Co., Limited



H-面



E-面