

H Series——with Pan/Tilt of Mega pixel

IP Camera

537 - User Manual

Index

1	INTRODUCTION	4
1.1	THE PACKAGE INCLUDES	4
1.2	FUNCTION AND FEATURES	4
1.3	TECHNICAL PARAMETERS	5
2	APPEARANCE AND INTERFACE	6
2.1	APPEARANCE.....	6
2.2	INTERFACE OF EQUIPMENT	6
3	VISIT IP CAMERA FROM LAN	7
3.1	LAN CONNECTION	7
3.2	SEARCH AND SET THE IP ADDRESS OF THE IP CAMERA	7
3.3	VISIT IP CAMERA	9
4	VISIT IP CAMERA FROM WAN	11
4.1	WAN CONNECTION	11
4.2	PORT FORWARDING	11
4.3	DDNS	12
4.3.1	<i>Manufacturer’s Domain Name</i>	12
4.3.2	<i>Third Part Domain Name</i>	12
5	OTHER SETTINGS	13
5.1	VIDEO SETTING PAGE.....	13
5.1.1	<i>Video Setting</i>	13
5.1.2	<i>Audio Setting</i>	13
5.1.3	<i>Image Setting</i>	14
5.2	NETWORK SETTING PAGE.....	14
5.2.1	<i>Basic Network Setting</i>	14
5.2.2	<i>WIFI Setting</i>	15
5.3	ALARM SETTING PAGE	15
5.3.1	<i>External Alarm Input</i>	15
5.3.2	<i>Motion Detection Setting</i>	16
5.3.3	<i>Alarm Mode Setting</i>	16
5.3.4	<i>Alarm Time Setting</i>	17
5.4	ADVANCE SETTING.....	17
5.4.1	<i>User Management</i>	17
5.4.2	<i>Auto Capture Setting</i>	18
5.4.3	<i>E-mail Setting</i>	18
5.4.4	<i>FTP Setting</i>	19
5.4.5	<i>Alarm Server Setting</i>	19
5.5	SYSTEM SETTING PAGE	20

5.5.1	<i>Device Information Checking</i>	20
5.5.2	<i>Date and Time Setting</i>	21
5.5.3	<i>Default Setting</i>	21
6	ADVANCED APPLICATION	22
6.1	OTHER WEB BROWSER VISIT DEVICE	22
6.2	CENTRALIZATION CONTROL SOFTWARE	23
6.3	OTHER SOFTWARE TO VIEW VIDEO	23

1 Introduction

The IP Camera combines a high quality digital video camera with network connectivity and a powerful web server to bring clear video to your desktop from anywhere on your local network or over the Internet.

1.1 The package includes

- ✓ IP Camera * 1
- ✓ IP Camera Utility CD *1
- ✓ 5V Power Adapter *1
- ✓ Stand of plastic * 1
- ✓ Cable * 1

NOTE : If you select the device with wifi function, it has built-in wifi module and transmitting antenna in package.

1.2 Function and Features

- ✓ Support 2 kinds of H.264 video stream and 1 way MJPEG video stream simultaneously, suitable for Local, Internet and Cross-platform view.
- ✓ Adopt mega pixels CMOS sensor, support 720p (1280*720)/640*360/320*180 video resolution.
- ✓ Built-in microphone, and also support to connect external audio capturing device (like MIC phone or sound pick-up) to capture the audio. External speaker can play the voice sent to the live scene, to achieve two-way intercom function. Audio support G.711 and G.726 types. Support echo suppression.
- ✓ Built-in Pan/Tilt, horizontally 350°, vertically 100°.
- ✓ Infrared LED for night vision covers 5m area, to realize 24 hours monitoring.
- ✓ Support IR and color filter change automatically, no any color difference.
- ✓ Support maxim 32G SD card for video and picture storage.
- ✓ Support 802.11b/g/n protocol, can build up wireless monitoring.
- ✓ Motion detection and alarm pin can be connected to external sensors to detect environmental situation.
- ✓ Built-in web server, use one port to send all the data, it facilitates network setting.
- ✓ Support mobile phone watching.
- ✓ Support video view by other browsers like as Firefox, safari etc.
- ✓ Manufacture attached a label at the bottom of each IP Camera, it include Device ID, DDNS. When IP Camera is connected to the internet, this URL can be used to visit the device.

- ✓ Manufacture provides free software, support Multi-view, Long time recording, video replay etc.

1.3 Technical Parameters

Item	Sub item	Description
Image Capture	Sensor	Mega pixels CMOS sensor
	Minimum illumination	IR lights on , 0 Lux
	Lens	f=3.6mm, Fixed Iris
	IR_CUT	Support IR and color filter change automatically
Pan/Tilt	Pan Coverage	350°
	Tilt Coverage	100°
	Preset Numbers	1
Assistant	Lighting Control	Auto/manual control
	Lighting	10pcs 850nm Infrared lights, 5m distant
Video and Audio	First Stream Resolution	720P (1280*720) /640*360/320*180
	Second Stream Resolution	640*360/320*180
	Compression	H.264/JPEG
	Frame rate	30fps
	First Stream Bit rate	1.024Mbps ~ 4.096Mbps
	Second Stream Bit rate	90kbps ~ 512kbps
	Image Rotation	Flip / Mirror
	OSD	support
	Audio Compression	G.711/G.726
Network	Basic Protocol	TCP/IP、HTTP、SMTP、RTSP、FTP、DHCP、DDNS、UPNP、NTP
	Other Protocol	802.11b/g/n
Other Features	Mobile Phone View	support
	Video control	support
	Dual way audio	support
	Memory	Snap or video into SD card
	Browser SD card	View or download from network
	Motion Detection	yes(4 zone detection)
	Triggered Actions	Email/FTP/SD storage/external alarm/send message to alarm server
	User Setting	Three levels
	Date/ Time Setting	support
	Upgrade	Upgrade from network
	DDNS	A free DDNS provided by manufacturer
Hardware Interface	Ethernet	10Base-T/100base-TX
	Memory	SD Slot

	Alarm In	1 way
	Alarm Out	1 way
	Audio In	Internal mic x 1, audio input interface x 1
	Audio Out	audio output interface x 1
Physical Index	Weight	374g
	Main body	111mm(L)*110mm(W)*125mm(H)
	Power	DC 5V
	Power consumption	<6W
	Operating temperature	-20 ~ 50
	Humidity	10% ~ 80% non-condensing
Software(PC Side)	OS Supported	Microsoft Windows 98/2000/XP/Vista etc.
	Browser	Internet Explorer6.0 and Above or Compatible Browser, Safari/Firefox etc.
	Application Software	IPCMonitor.exe

2 Appearance and interface

2.1 Appearance

Remarks:

- **Power Indicator:** it will turn RED if equipment was powered on.
- **WIFI Indicator:** If there is a WIFI module in the equipment, and there is data transferring by WIFI, it will begin twinkle.

2.2 Interface of Equipment

Press the Reset button for 5 seconds or more, the device will return to factory default and reboot automatically. Please don't cut off the power of device during this time.

Factory default IP address is 192.168.0.158, User name: admin, password: 123456.

Note: please use 5V power adapter

3 Visit IP Camera from LAN

3.1 Lan connection



Figure 3

3.2 Search and set the ip address of the ip camera

Run "HSearch_en.exe" in the CD, the setting interface as figure 4. Operation Steps:

- 1) Click "Search (F3);
- 2) Choose the device;
- 3) Change the ip address of the ip camera according to the information in the red frame on the left. The numbers in the red circle should not be the same;
- 4) Put the user name and password into "Authentication" (***By default, the user name is: admin, password is: 123456***).
- 5) Click "Update"
- 6) After successfully update, click "Search (F3)", choose the device and click "Browse (F4)". Then you may view the ip camera, like figure 5.

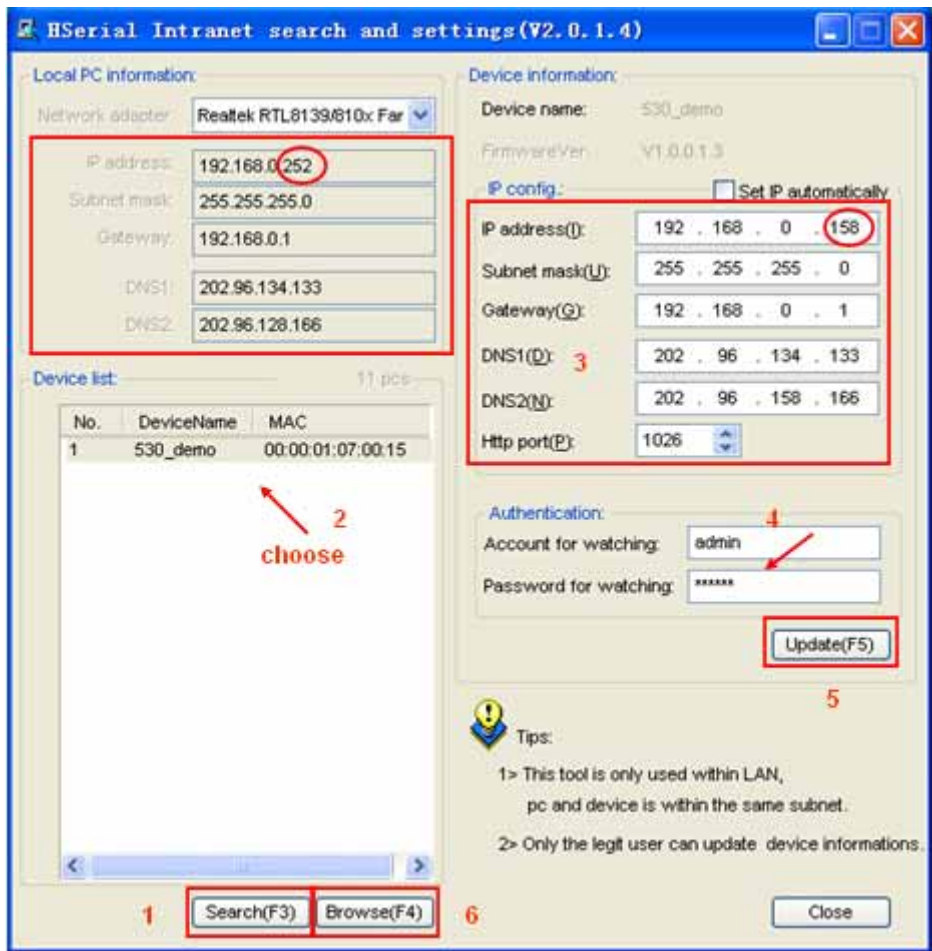


Figure 4

NOTE:

- 1) If you don't know how to fill out the content of "IP config", you could also tick the "Set IP automatically" to get the IP address from the router automatically.
- 2) If you have the firewall software in your PC, when you run the HSearch_en.exe, it may pop up a window to say "whether you want to block this program or not", then you should choose not to block.
- 3) The default ip address is 192.168.0.158 and default http port is 80.

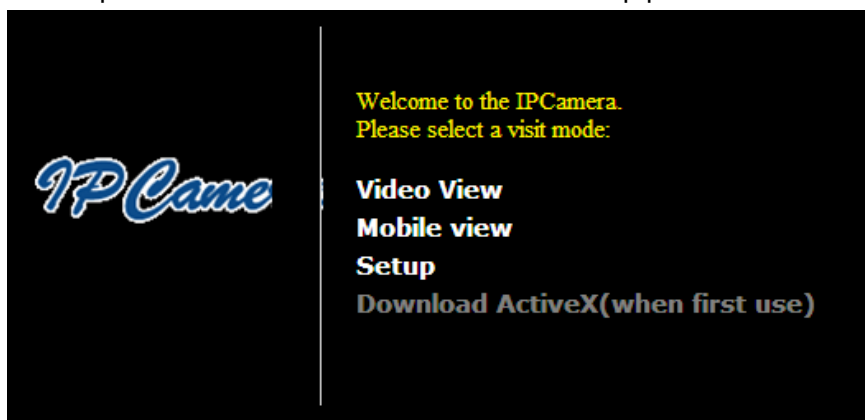


Figure 5

3.3 Visit IP Camera

Suggest to use internet explorer or compatible browser to visit it for the first time (**use other browsers, please refer to 6.1**), you will be required to install the ActiveX before viewing the video. As Figure 5, click “Download ActiveX (when first use)”. The dialog just as Figure 6 will pop up accordingly. Click “Run”, then it will download and install the ActiveX automatically.

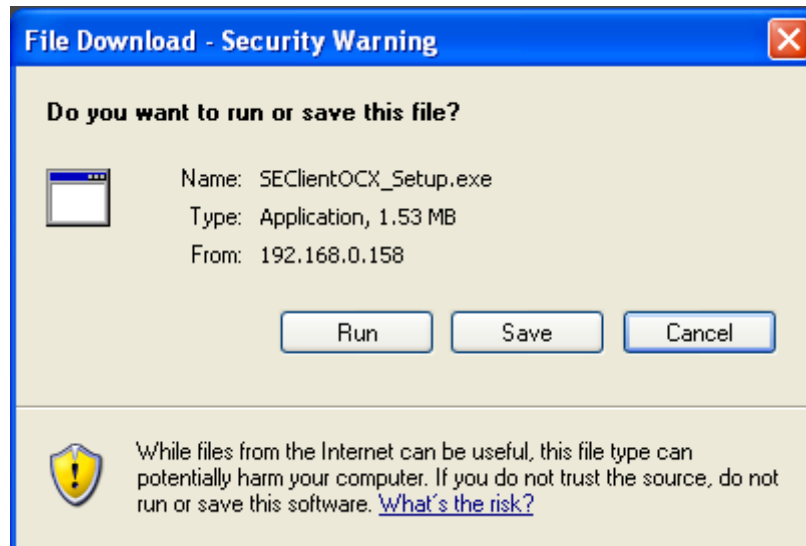


Figure 6

After the ActiveX installation, click the “Video View” as Ffigure 5, then you will enter the video view home page as below Figure 7.

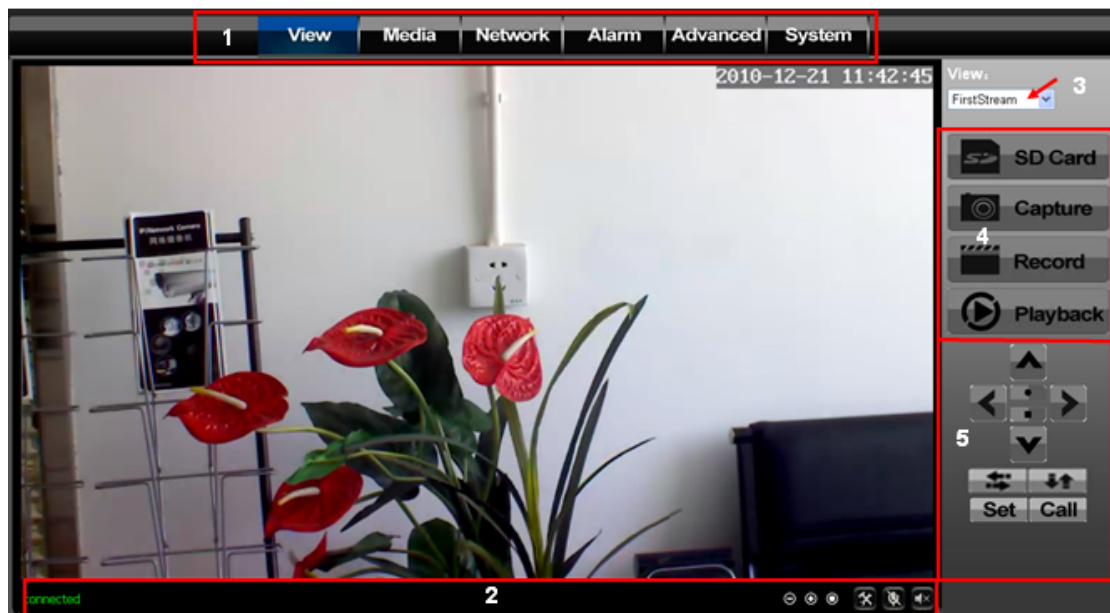


Figure 7

1) Main Menu

The main menu includes function settings for different submenus.

2) Status Bar



Figure 8

connection status display

Record status display : if click “Record” in figure 7, it will show “REC” which stands for recording; click record button again, it will stop.

Zoom out, zoom in and reduction picture buttons

File saving location setting :you may set the location for recording and capturing, the default location is d:/record ;

Talk-back button: : it can transmit the sound which collected by the computer to the equipment. And played out by the speakers which was connected to the equipment. Click it again, it will stop playing.


Audio play button: it can play out the sound which collected by the equipment on the computer, click it again, it will stop playing.

3) Visit the video

Use the first Stream when visit in LAN, use the Second Stream when visit in Wan. The video area is up to the resolution .The higher resolution, the bigger image.

4) Record/playback/capture/SD card


Click “Record” to start record. Click again to stop record.


Click “playback”, it will show a player which can play the record video. For the buttons: , means: play; stop; choose the last video file ; choose the next video file ; open the file.


Click “capture” to save the picture to the specified file.



Click “SD card” can browse the files in the SD card (If the SD card already inside the camera).

5) Control the camera

Click the below buttons  can control the camera move up, down, left and right.

Click the below buttons  can center and stop the movement of the camera

Click the below buttons  will make the camera move around one time horizontal and vertical respectively.

Click , when the camera move to another point, click ,the camera will move back to the “Set” point.

4 Visit IP Camera from WAN

4.1 Wan connection

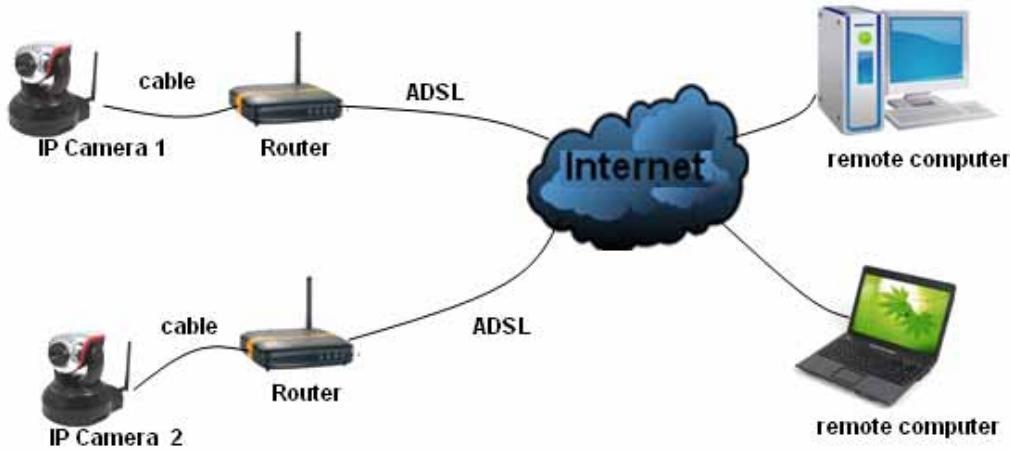


Figure 9

4.2 Port forwarding

If visit IP Camera from WAN, you **must** do port forwarding on the router. Take Netgear router for example.



Figure 10

Operation Steps:

- 1) After login the interface of the router , choose "Port Forwarding";
- 2) Choose "Add custom Service" ;

- 3) Input IP camera port;
- 4) Input IP camera IP address ,click “Apply”(the http port and ip address should be the same as figure 4 which set by you own).

Note: Different router has different settings for port-forwarding; please kindly follow your router guide to do the port-forwarding.

After the port-forwarding is done, you could view the IP Camera from WAN now.

4.3 DDNS

If the port forwarding is done successfully, and you can access the camera by WAN IP address remotely, then you can also use DDNS to access IP camera.

4.3.1 Manufacturer’s Domain Name

Device manufacturer has established a DDNS, and allotted a dynamic domain name to every device, the domain name has been integrated into devices when producing. For example, enter domain name of Figure 11, the browser will connect the device and display the IP address.

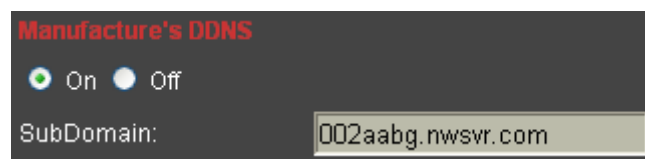


Figure 11

4.3.2 Third Part Domain Name

User can also use third part DDNS, such as www.dyndns.com User must apply a free domain name from this website and fill the info into the below blanks (Figure 12) and save the settings. Then the domain name can be used.

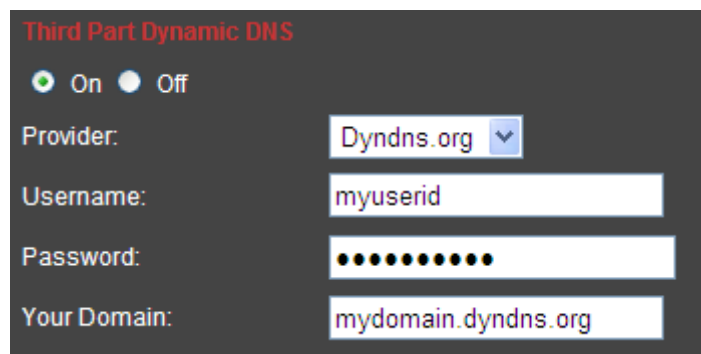


Figure 12

Note: Using the third party domain name, if the http port is not 80, the port number should be adding to the domain name with colon. Example: <http://mydomain.dyndns.org:81>. **While manufacturer DDNS is no need to add PORT.**

5 Other Settings

5.1 Video Setting Page

5.1.1 Video Setting

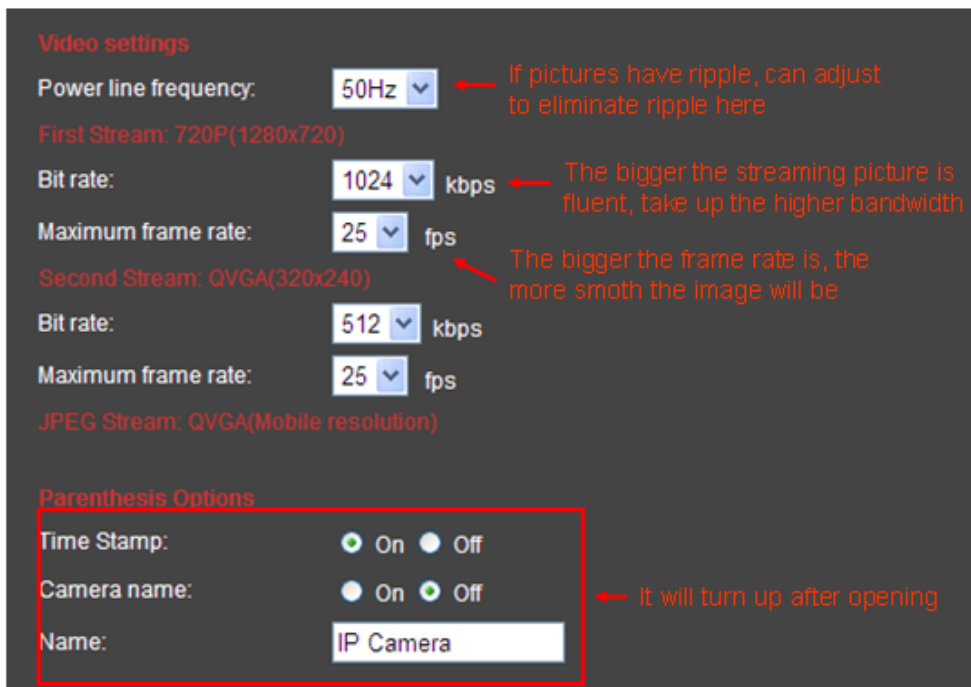


Figure 13

5.1.2 Audio Setting

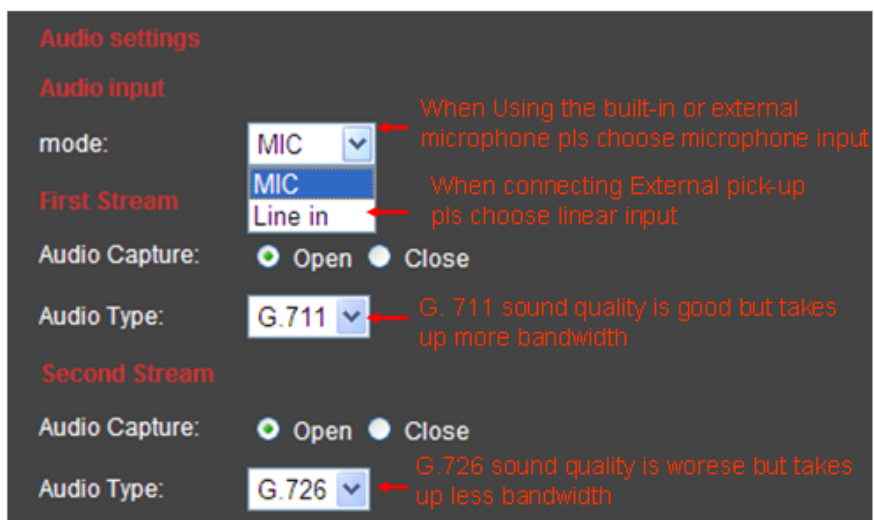


Figure 14

After you change any settings for Audio, you need to power off the item and reboot it. Audio on, click the audio play button as in Figure 7, you can hear the sound from IP Camera.

Audio off, you will save Bandwidth and storage space.

5.1.3 Image Setting

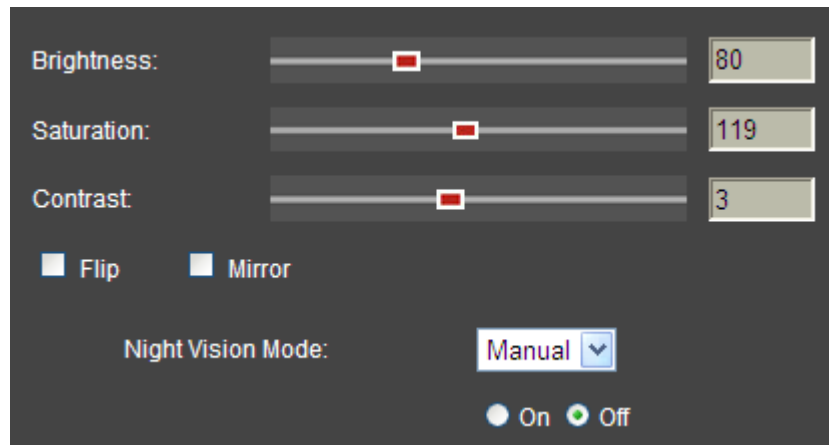


Figure 15

5.2 Network Setting Page

5.2.1 Basic Network Setting

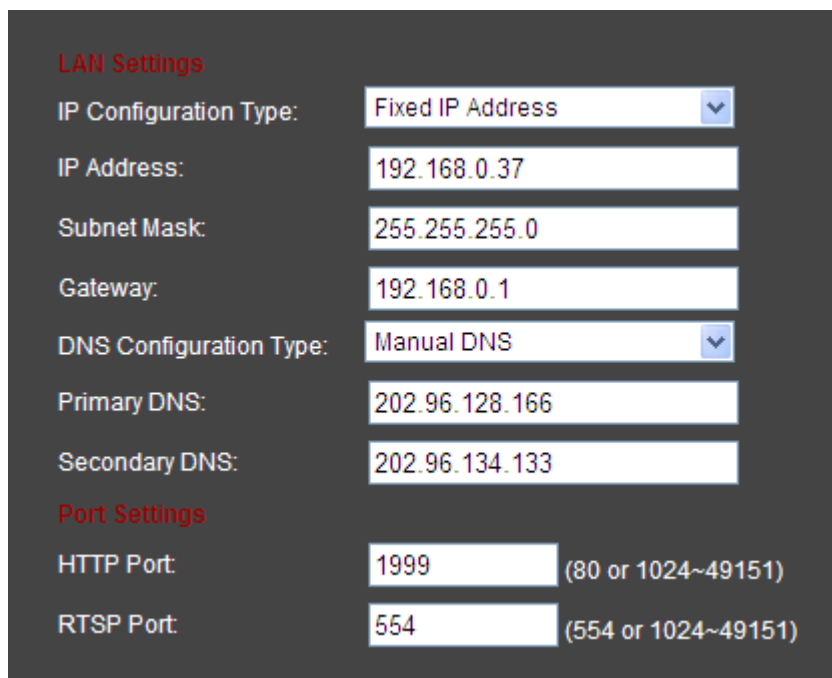


Figure 16

5.2.2 WIFI Setting

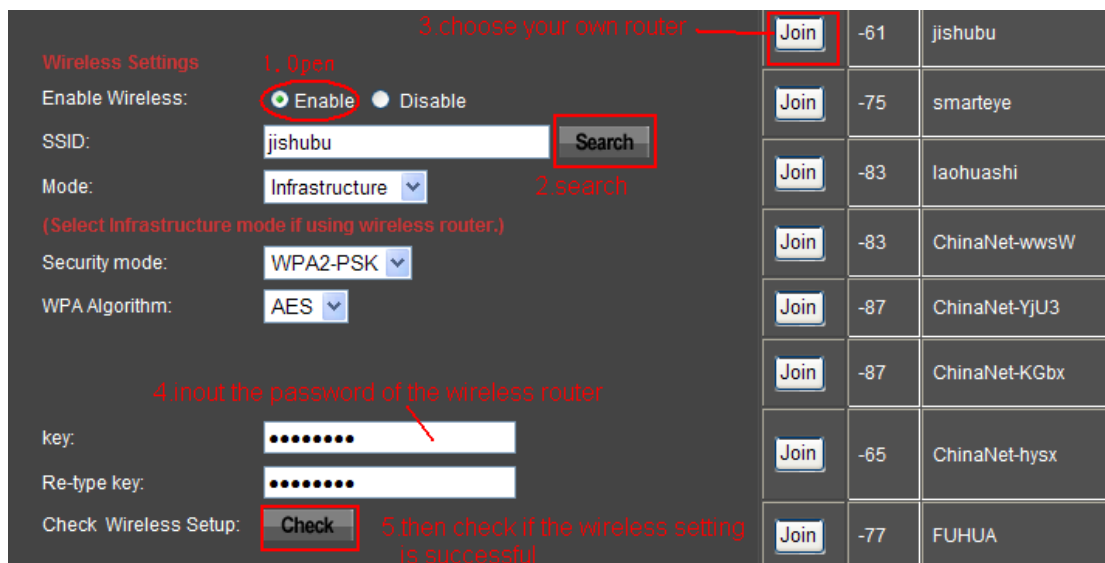


Figure 17

Please use the network cable to connect the device into Internet before doing settings of wireless connection. Please follow the above 1-4 steps to do the settings, then click “apply” to save the settings. You can also check the wireless network is connected successfully or not by clicking “Check” button. When the wireless is connected successfully, power off the device and reboot it, then the wireless network will work perfectly.

5.3 Alarm Setting Page

5.3.1 External Alarm Input



Figure 18

5.3.2 Motion Detection Setting



Figure 19

Please click “apply” after settings are done, and motion detection takes effect. The bigger the digital, and the higher sensitivity.

5.3.3 Alarm Mode Setting

After it triggers the alarm, the camera will store the capture pictures and videos according to your settings, to store in SD, or upload to FTP, or email you, etc.



Figure 20

Note: Please insert the SD Card, should the “Save Video on the SD card” and “Save video on the FTP server” take effect.

5.3.4 Alarm Time Setting

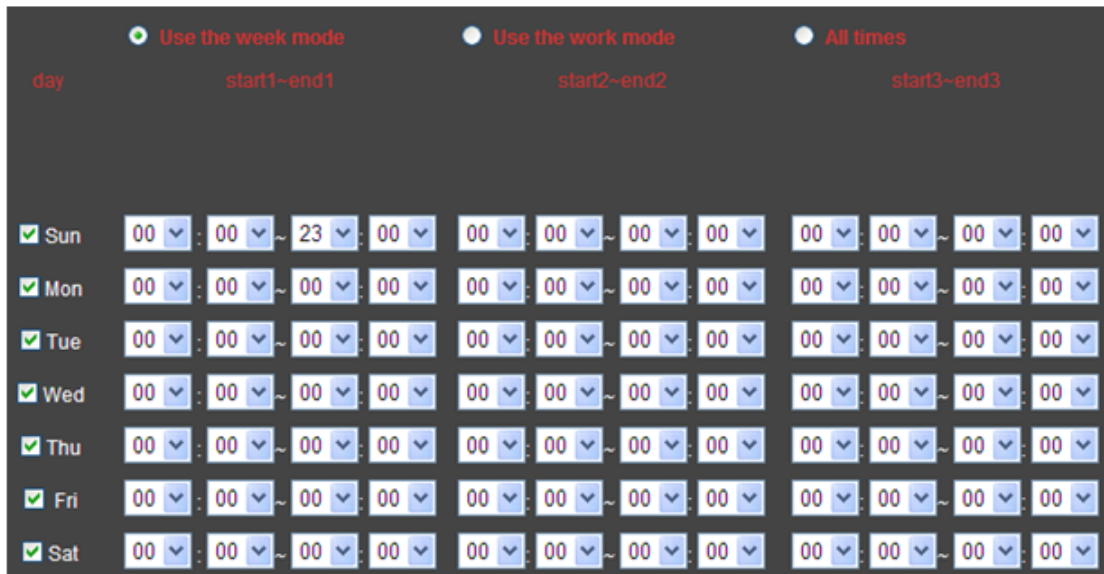


Figure 21

The device will trigger the alarm only during the armed time period.

Note: Please make sure your system time is correct before you set the alarm time period. Please refer to 5.5.2 to set system time.

5.4 Advance Setting

5.4.1 User Management

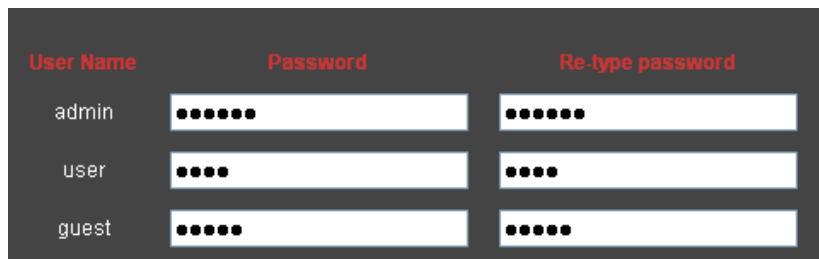


Figure 22

There are 3 levels of user authorization.

- Administrator : "admin" has the highest authority. It can do any settings. Factory default password: **123456**
- User: user can only operate the device but can't do any setting changes. The default password is **user**
- Guest: User can view the video, but can't operate the device. The default password is **guest**

Note: Please change these 3 level passwords when your first use to ensure your safety.

5.4.2 Auto Capture Setting



Figure 23

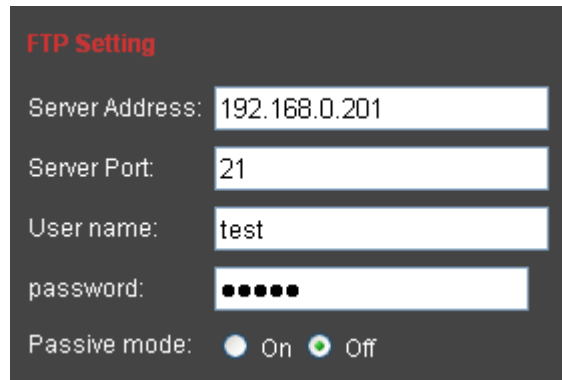
Tick “Save Picture on the SD card”, the snap pictures will be stored onto SD card.

5.4.3 E-mail Setting

Figure 24

- SMTP server: fill with email server address, for example: sohu email sever, here you should fill with “smtp.sohu.com”
- In Figure 24, the blanks which have been filled with info should be filled. If any info is not filled right, the setting will fail.

5.4.4 FTP Setting



FTP Setting

Server Address: 192.168.0.201

Server Port: 21

User name: test

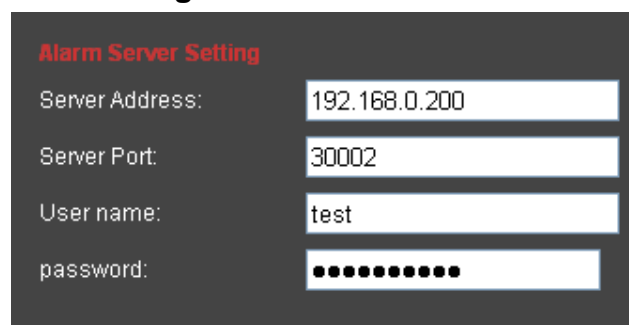
password: ●●●●●●

Passive mode: On Off

Figure 25

In order to use FTP function, user should apply username and password on the FTP server first. And please apply some storage, and the authority to write and create sub-category into it.

5.4.5 Alarm Server Setting



Alarm Server Setting

Server Address: 192.168.0.200

Server Port: 30002

User name: test

password: ●●●●●●●●

Figure 26

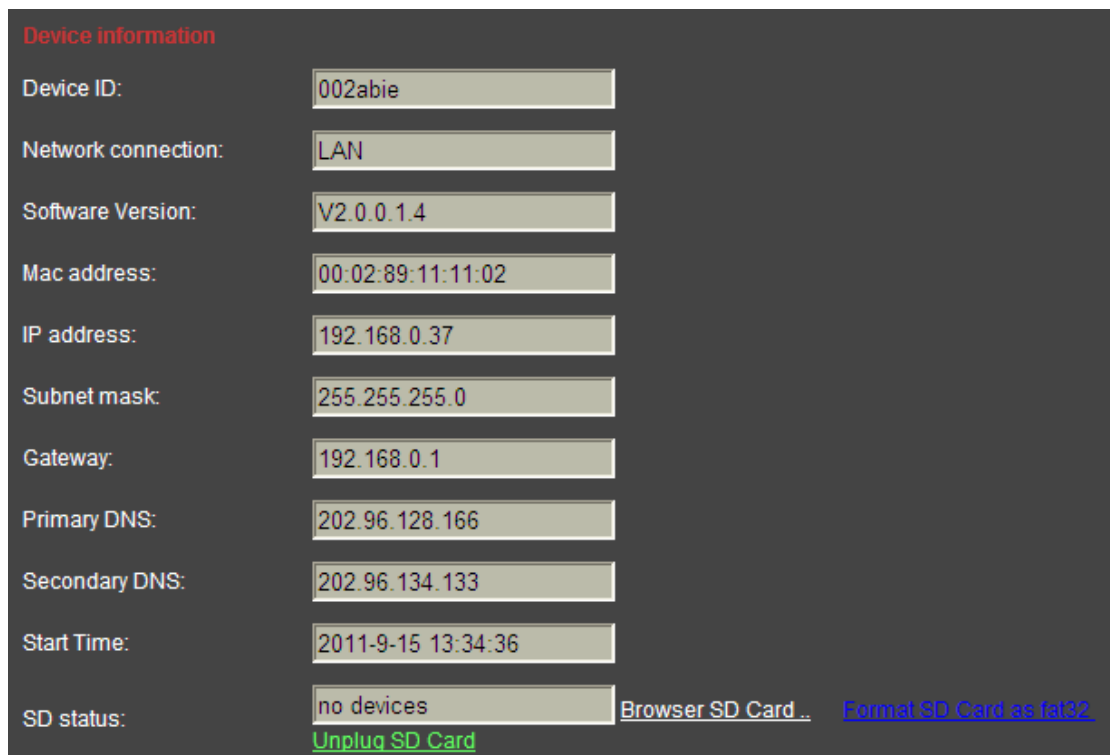
Please confirm if you have connected to alarm server. The alarm message format as follow:

```
GET /api/alarm.asp ?
username=username&
userpwd=password&
rea=alarm type (1=Motion Detection, 2 =Alarm from Alarm in port, 3 =Other Type)&
io=0
```

Alarm server need develop by customer; user can extend other functions on this server, like SMS, MMS alarm etc.

5.5 System Setting Page

5.5.1 Device Information Checking



Device ID:	002abie
Network connection:	LAN
Software Version:	V2.0.0.1.4
Mac address:	00:02:89:11:11:02
IP address:	192.168.0.37
Subnet mask:	255.255.255.0
Gateway:	192.168.0.1
Primary DNS:	202.96.128.166
Secondary DNS:	202.96.134.133
Start Time:	2011-9-15 13:34:36
SD status:	no devices

[Unplug SD Card](#) [Browser SD Card ..](#) [Format SD Card as fat32](#)

Figure 27

- Device ID is set by factory. Every ID is unique
- Network Connection status will display “LAN” when connected by wired cable and display “Wireless LAN” connected by wireless Router.
- SD status will remind if SD card inserted and display the free capacity. Click “Browse” to view the contents in SD card and, “Format SD Card as fat32” to format SD Card and, “Unplug SD Card” to stop the work of SD Card.

The device supports max 32G SD card. Please format the SD card to FAT32 before use the card on Camera. Please check if the SD Card matches the camera or not before purchase the SD Card.

5.5.2 Date and Time Setting

Current date & time:
2011-09-15 15:30:48

Time zone: (GMT+08:00) Beijing, Chongqing, Hong Kong, Urumqi

Date&time setting:

- Manual setting

Date: 2011-09-15 (yyyy-mm-dd) Time: 15:30:47 (hh:mm:ss)
(1971-01-01 – 2036-12-31)
- Sync with computer time

PC Time: 2011-09-15 15:30:57
- Network Time Protocol

NTP Server: time.nist.gov

Interval: 01 hours
- Keep current setting

Figure 28

Please refer to above Figure 28. Select the time zone first. There are three options to set the time and date. One is manually, another is keeping the same as the time and date on the computer, and the third one is getting it from the NTP server.

5.5.3 Default Setting

Initialize

Reboot:

Factory default:

Backup setting data:

Restore:

Upgrade:

Figure 29

6 Advanced Application

6.1 Other web browser visit device

In the Windows OS, using browser with IE kernel, user must download the Active-x. Please Download “QuickTime” plug-in and install it before you use Safari, Firefox to access the IP camera. (We suggest QuickTime 7.6) After installation, users can start the QuickTime program, and to access the QuickTime Preferences dialog box from Edit Menu. Click Advanced, select “custom.” in the Transport Setup. It pops up the Streaming Transport dialog box. Please select “HTTP” for transport protocol and “80” as port ID, and then click “ok”. Please be back to Transport Setup to change “Custom..” to “Auto”. Finally, click “ok” at the bottom. Please refer to the above Figure 30. Safari for example, you can find the player interface as the below Figure 31.

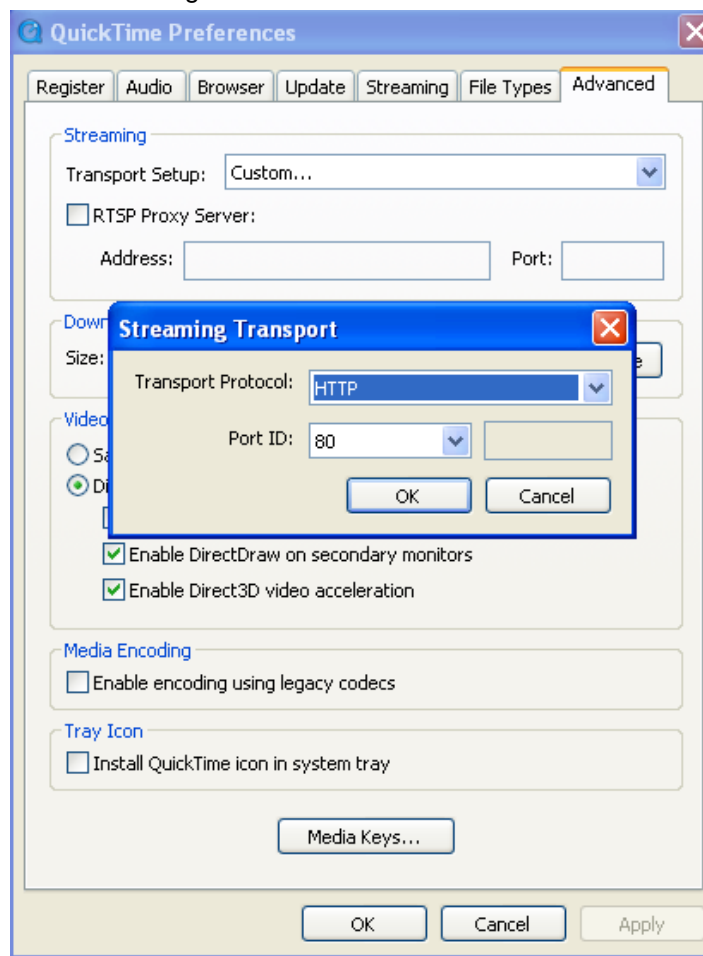


Figure 30

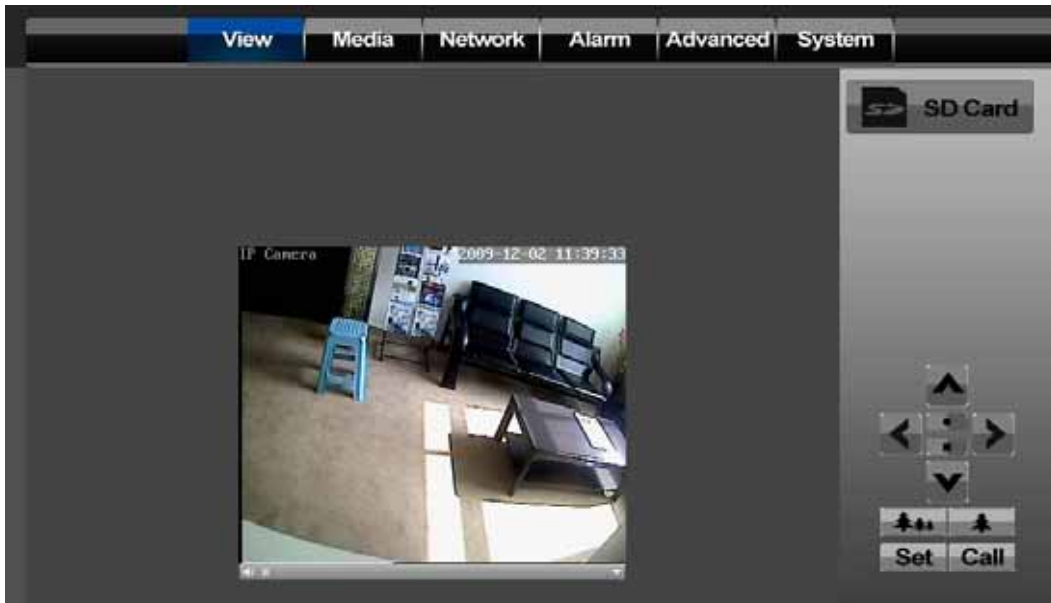


Figure 31

6.2 Centralization Control Software

IPCMonitor is a free software offered by factory, several devices on LAN and WAN can be browsed at the same time. The software also support snap, video record and so on. The below Figure 32 is the interface.

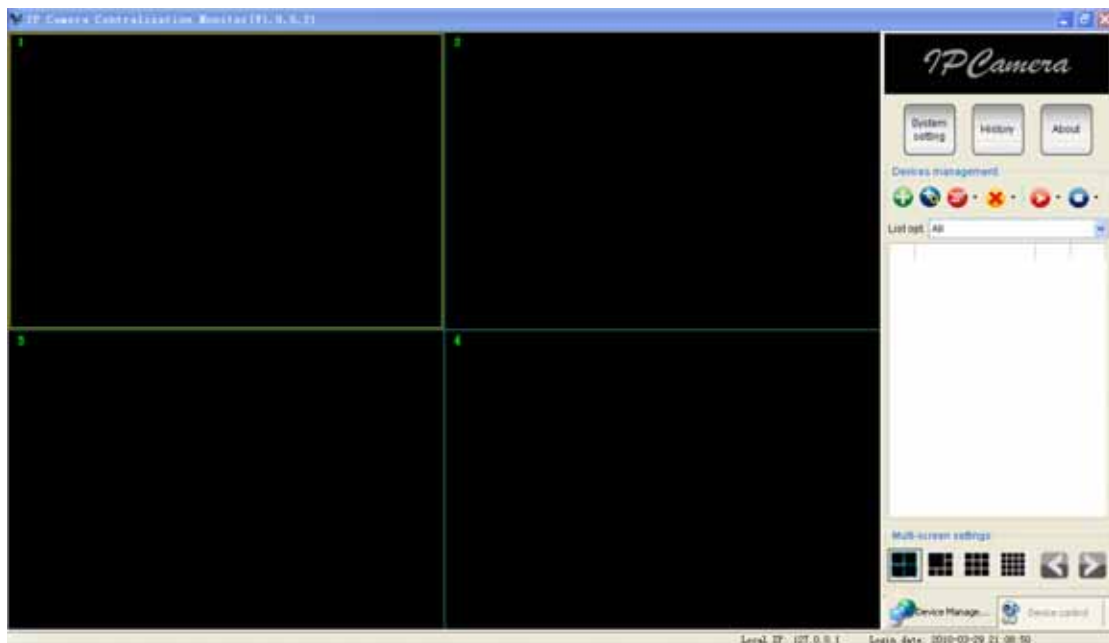


Figure 32

For more information, pls. refer the <<IPCMonitor User Manual>> in CD.

6.3 Other software to view video

As the device supports RTSP protocol, you can use VLC player to play IP Camera video.

It is compatible with VLC 1.1.12 version or above.

Please use below URL to visit:

rtsp://ip:port/11 (View the video under first stream)

rtsp://ip:port/12 (View video by second stream)

The PORT is RTSP port, please refer to the settings of Figure 16.

The antennas used for this transmitter as shown in this filing must be installed to provide a separation distance of at least 20 cm from all persons and must not be co-located or operating in conjunction with any other antenna or transmitter

Warning statement at the user for keeping 20cm separation distance and the prohibition of operating to a person has been printed on the user manual.

7 Warnings

1) changes or modifications not expressly approved by the party responsible for compliance

could void the user's authority to operate the equipment

2) This equipment has been tested and found to comply with the limits for a Class B digital

device, pursuant to Part 15 of the FCC Rules. These limits are designed to provide reasonable

protection against harmful interference in a residential installation. This equipment generates,

uses and can radiate radio frequency energy and, if not installed and used in accordance with

the instructions, may cause harmful interference to radio communications.

However, there is no

guarantee that interference will not occur in a particular installation.

If this equipment does cause harmful interference to radio or television reception, which can be

determined by turning the equipment off and on, the user is encouraged to try to correct the

interference by one or more of the following measures:

-- Reorient or relocate the receiving antenna.

-- Increase the separation between the equipment and receiver.

-- Connect the equipment into an outlet on a circuit different from that to which the receiver is connected.

-- Consult the dealer or an experienced radio/TV technician for help.