

Galayou wansview

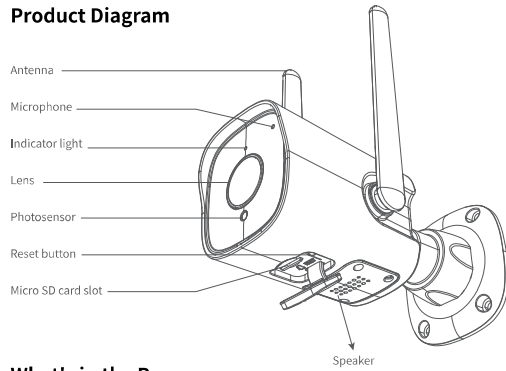
2K



# Y1 Quick Installation Guide

Outdoor Security Camera

## Product Diagram



## What's in the Box



## Indicator Lights Status

Light Status	Camera Status
Red light on	Camera is powered on
Red and blue light alternately flashing	Waiting to connect now
Blue light flashing	Connecting to Wi-Fi
Blue light solid	WiFi connection succeeds
Red light quickly flashing	1. Reset camera to factory setting 2. Camera is upgrading firmware

**Warm note:** Please make sure your router is connected to Internet.

## User's Guide

### 1. Download and Install

Go to the App Store or Google Play to search and download the "Wansview Cloud" APP on your smartphone. Or scan below QR code to get the APP.

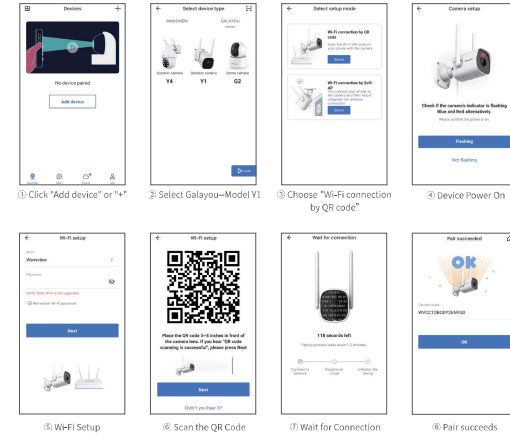


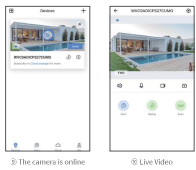
### 2. Register Account

Open the "Wansview Cloud" APP and register an account with your email and activate it.

**Tips:** Your password must be 8-16 characters, and contains at least the following three categories: numbers, uppercase letters, lowercase letters, or special characters.

## 3. Add Y1 by "Wi-Fi connection by QR code"



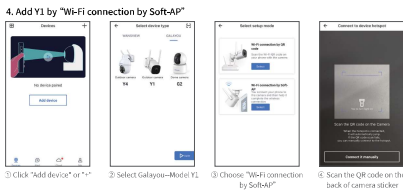


③ The camera is online

④ Live Video

**Tips:**

1. This outdoor security camera only works with 2.4GHz Wi-Fi, 5GHz Wi-Fi is not supported!
  2. Please put the camera near to the router during setting up the camera, after connection succeeds, you can place the camera in another place.
- Note:** Put the camera close to the router (3 feet) during setting up the camera.

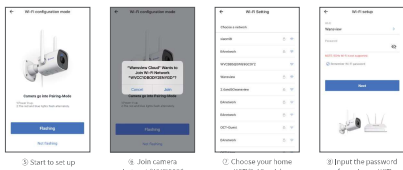


① Click "Add device" or "+"

② Select Galaxyy-Model Y1

③ Choose "Wi-Fi connection by Soft-AP"

④ Scan the QR code on the back of camera sticker

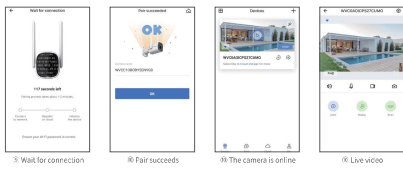


⑤ Start to set up

⑥ Join camera's hotspot (WVXXXXXX)

⑦ Choose your home WiFi (4G only)

⑧ If put the password of your home WiFi



⑨ Wait for connection

⑩ Fair succeeds

⑪ The camera is online

⑫ Live video

**FAQ**

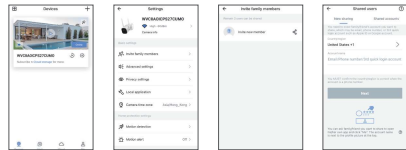
**The camera can not connect to Wi-Fi?**

Please press the reset button on the camera for 5 seconds until the red light flashes quickly and the camera says "reset is successful". Please wait for about one minute, then the camera will flash blue and red light alternately and you can reconnect it now.



**How to share the camera to another account?**

1. The invited member should download the Wansview Cloud app, and register a new account first.
2. The main account should open the Wansview cloud app, tap "Settings-invite family members"--press <img alt="share icon" data-bbox="445 478 452 485"/>--choose Country and then enter the invited member's account.



3. The invited member needs to open the Wansview cloud app and then click "Receive". If he/she doesn't receive the invitation, please close the app and then open it again.

**FCC Warning**

This device complies with part 15 of the FCC Rules. Operation is subject to the following two conditions: (1) This device may not cause harmful interference, and (2) this device must accept any interference received, including interference that may cause undesired operation.

Any Changes or modifications not expressly approved by the party responsible for compliance could void the user's authority to operate the equipment.

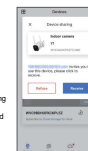
This equipment has been tested and found to comply with the limits for a Class B digital device, pursuant to part 15 of the FCC Rules. These limits are designed to provide reasonable protection against harmful interference in a residential installation. This equipment generates uses and can radiate radio frequency energy and, if not installed and used in accordance with the instructions, may cause harmful interference to radio communications. However, there is no guarantee that interference will not occur in a particular installation. If this equipment does cause harmful interference to radio or television reception, which can be determined by turning the equipment off and on, the user is encouraged to try to correct the interference by one or more of the following measures:

- Reorient or relocate the receiving antenna.
- Increase the separation between the equipment and receiver.
- Connect the equipment into an outlet on a circuit different from that to which the receiver is connected.
- Consult the dealer or an experienced radio/TV technician for help.

The equipment complies with FCC radiation exposure limits set forth for an uncontrolled environment. This equipment should be installed and operated with minimum distance between 20cm the radiator your body.

Shenzhen Smart-eye Digital Electronics Co., Ltd  
2F, Block 1, Shangrong Industrial Zone, No.2 Baolong Road  
5, Longgang, Shenzhen, China

Product Name IPCAM  
Model Y1(Y763)  
<https://www.galaxyy-store.com/y1>



**NB Warning:**

Manufacturer's Name: Shenzhen Smart-eye Digital Electronics Co., Ltd  
Sample Description: Battery IP Camera Trade Mark:/  
Model number: Y1(Y763);Y2(Y765); G3, R11, R12, 640, 641, 642, 764  
Operating Temperature: -10° C to 50° C Wireless specification:  
2.4G Wi-Fi: Max power 16.78dbm in frequency band 2412 - 2472MHz, Limit 20dBm.  
This product is a fixed location. To comply with RF exposure requirements, a minimum separation distance of 20cm must be maintained between the user's body and the device, including the antenna. Use only the supplied or an approved antenna.  
This device in compliance with the essential requirements and other relevant provisions of Directive 2014/53/EU. All essential radio test suites have been carried out.

This device complies with RF specifications when the device used at 20cm from your body. This product can be used across EU member states.  
This device was tested for typical fixed location operations. To comply with RF exposure requirements, a minimum separation distance of 20cm must be maintained between the user's body and the IP camera, including the antenna.  
This device in compliance with the essential requirements and other relevant provisions of UK Radio Equipment Regulations (SI 2017/1206); UK Electrical Equipment (Safety) Regulations (SI 2016/1101); and UK Electromagnetic Compatibility Regulations (SI 2016/1091). All essential radio test suites have been carried out.

Product Name: IPCAM

Model: Y1(Y763)

<https://www.wansview.com/cn/proinfo.aspx?proid=48&categoryid=1&aid=2>

Note: Both trademarks belong to the same manufacturer

