



iSmartViewPro

IP Camera 704RA

Quick Installation Guide

Tips:

This is Quick Installation Guide, for more detailed instruction, please download it by this link: <http://cd.ipcamdata.com>

iSmartViewPro Quick Installation Guide

1. Power on camera
2. Download APP
3. Connect to network

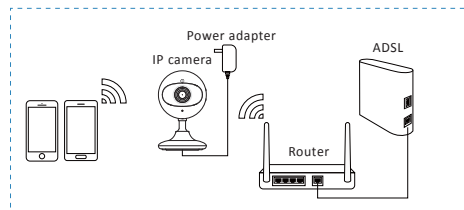
This device complies with part 15 of the FCC Rules. Operation is subject to the following two conditions: (1) This device may not cause harmful interference, and (2) this device must accept any interference received, including interference that may cause undesired operation. Any Changes or modifications not expressly approved by the party responsible for compliance could void the user's authority to operate the equipment. This equipment has been tested and found to comply with the limits for a Class B digital device, pursuant to part 15 of the FCC Rules. These limits are designed to provide reasonable protection against harmful interference in a residential installation. This equipment generates uses and can radiate radio frequency energy and, if not installed and used in accordance with the instructions, may cause harmful interference to radio communications. However, there is no guarantee that interference will not occur in a particular installation. If this equipment does cause harmful interference to radio or television reception, which can be determined by turning the equipment off and on, the user is encouraged to try to correct the interference by one or more of the following measures:

- Reorient or relocate the receiving antenna.
- Increase the separation between the equipment and receiver.
- Connect the equipment into an outlet on a circuit different from that to which the receiver is connected.
- Consult the dealer or an experienced radio/TV technician for help.

The device has been evaluated to meet general RF exposure requirement. The device can be used in portable exposure condition without restriction.
The distance between user and products should be no less than 20cm

Company name : JB PARTNER add: UL.Pomorska 486 92-735 Lodz, Poland

Power on camera

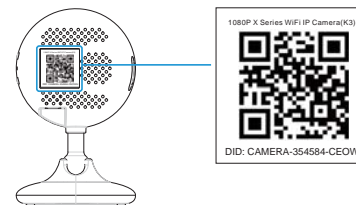


This is the Quick Installation Guide, for more detailed manual, please download it from this link: <http://cd.ipcamdata.com>.

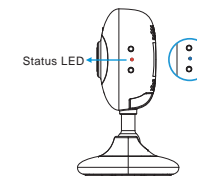
- Plug the camera in with the included power supply
- Connect your phone to your WiFi
- Connect the camera to your wifi router with ethernet cable

Tips:

- We suggest you to use the included power supply to avoid any damage of the camera.
- You can find the camera ID and QR code in the label on the camera.



Camera ID & QR Code label



● ● Status LED ● ● Solid Light ● ● Blinking Slowly ● ● Blinking Quickly

Indicator Light Status	Device Status
● ● Red light is blinking slowly	Power up and activating
● ● Red and blue lights are blinking slowly	The device is ready to connect
● ● Blue light is blinking quickly	The device is receiving the wifi signal or connecting to the wifi
● ● Blue and red lights are solid and steady	The device is connected to the network
● ● Red light is blinking quickly	The device is reset to restore to factory default
● ● Blue light goes off	The device failed to connect to the network

Download APP

1. Go to the App Store or Google Play to search and download "iSmartViewPro" APP to your smart phone or tablet.



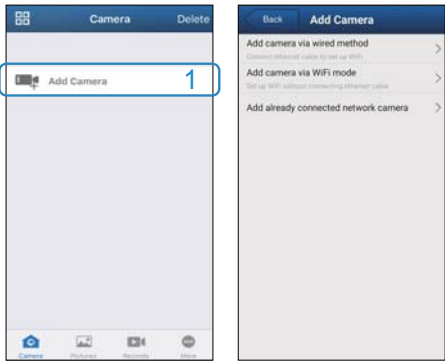
iSmartViewPro icon

2. Or scan below QR code to get the APP.

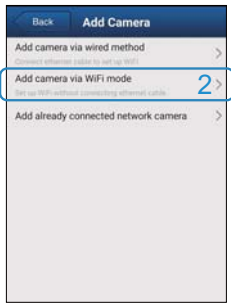


Connect to network

1. Click on "Add Camera".

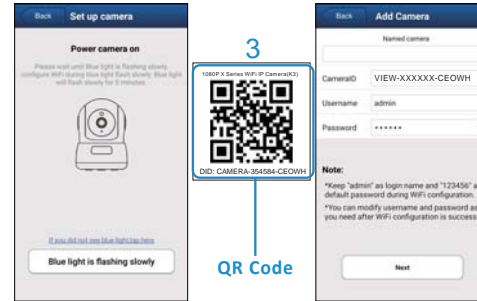


2. Click on "Add Camera via WiFi mode".



2) Please check the blue light on the camera, if it is flashing slowly, please tap "Blue light is flashing slowly", and scan the

QR code in the label on the camera, and name the camera. Then click on "Next" (Please don't change the user name and password here, please use the default one "admin" and "123456")

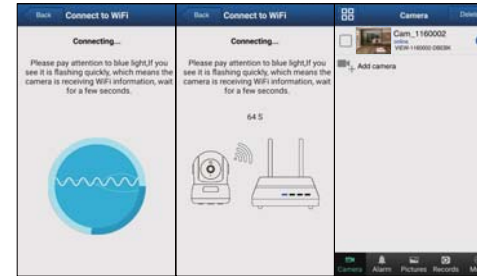


3) Your WiFi name is input already (if this WiFi is not what you want to connect it to, please tap to switch to other WiFi. But please note the wifi you are connecting to should be the 2.4GHz wifi), and input the correct WiFi Password (Wi-Fi name and Password should not contain special characters ' and &) and click "Connect to WiFi". And hold your phone close to the camera and turn up the phone volume, then click on "Next" and "Start".



4) The phone will send a sequence of beeps to the camera and try to connect to WiFi,

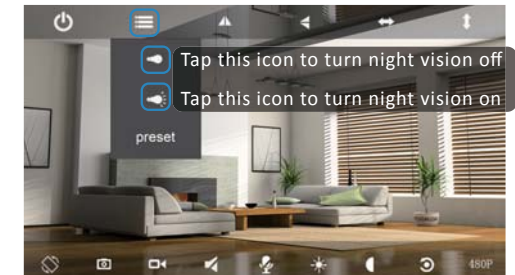
If WiFi setup is succeeded, it will go back to Camera interface and show "Configuration Succeed" and the camera will be "online".



Tips:

- If you have several cameras, please configure them one by one. This process will only work for one camera once.
- The camera is a 2.4GHz wifi based one. Please make sure your phone is connected to your 2.4GHz wifi before doing the setup.
- The whole process of configuration should be completed in 5 minutes after the camera plugged in. Otherwise, the camera should be unplugged and replugged in again to get another 5 minutes setup time.
- If it is failed, please tap "Try again".

3. If the night vision doesn't work, please turn on the IR lights as below instruction.



4. If you forgot the password, hold down the "Reset" button for around 15-20 seconds until you see the red light is blinking very fast, let it go. And then the camera will be restored to factory default. The default username /password: admin/123456. Please do the setup of the camera again as what you did.

