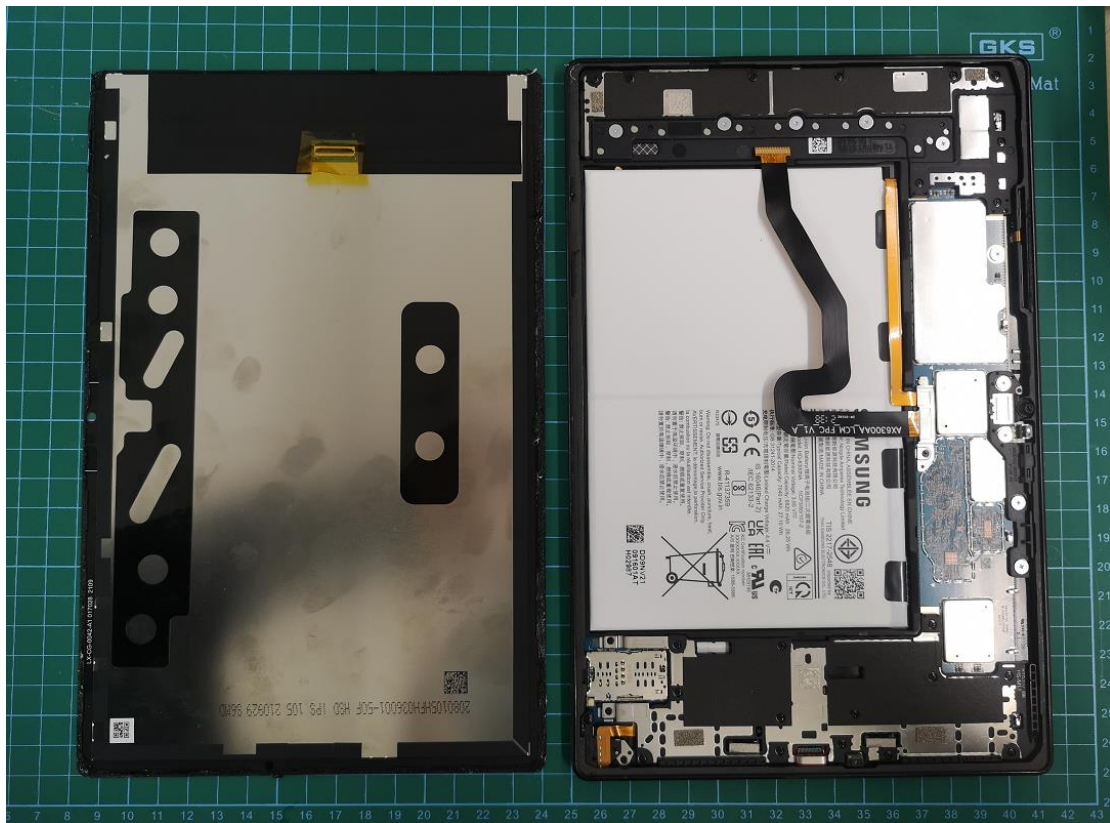


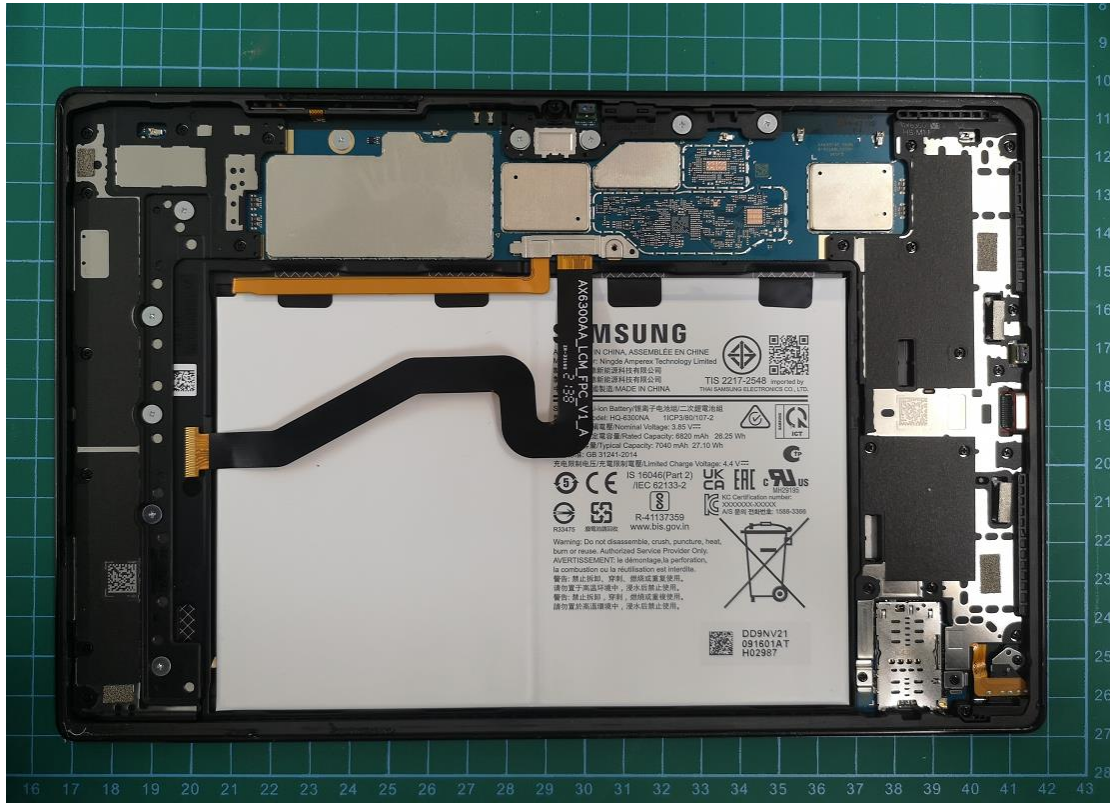
PCB01



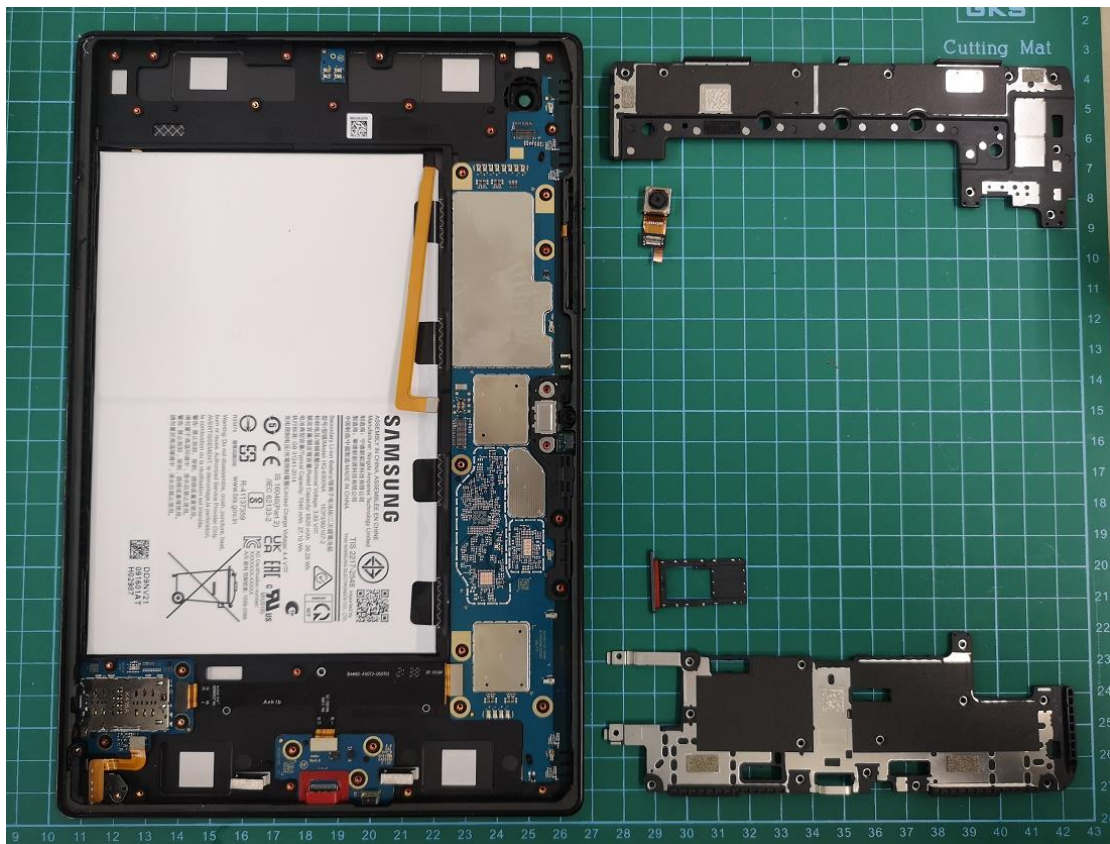
PCB02



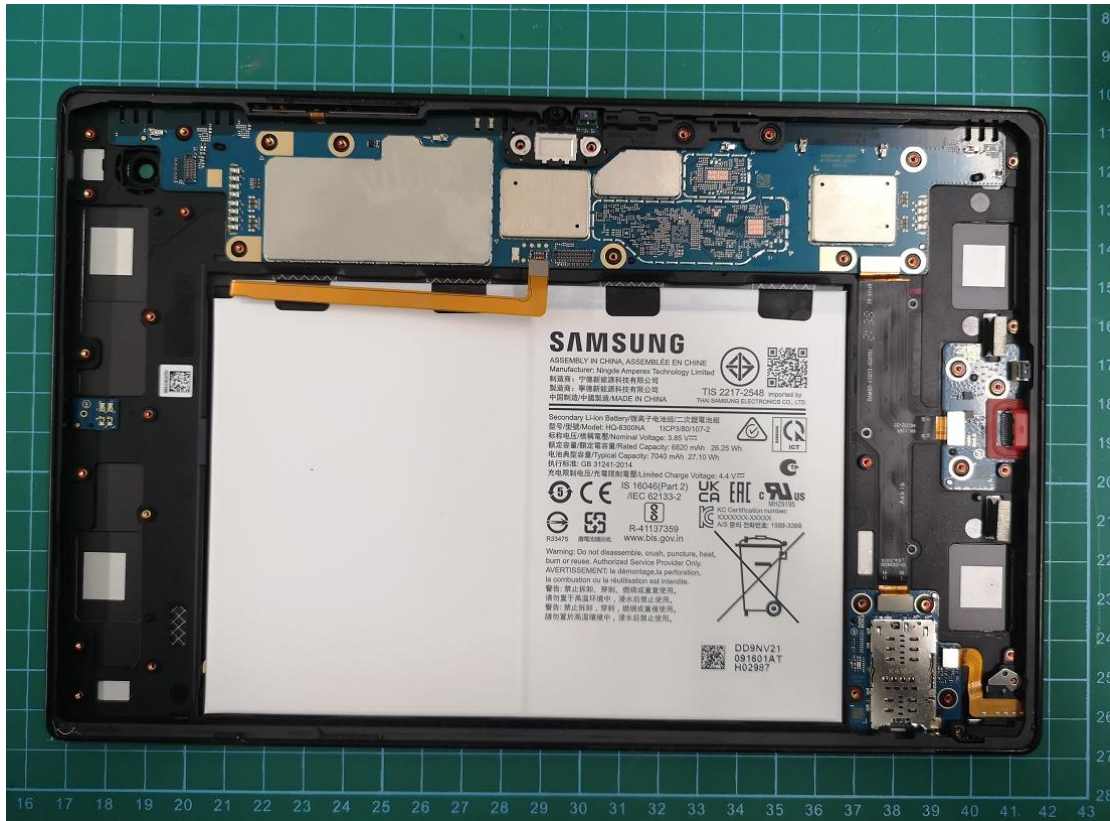
PCB03



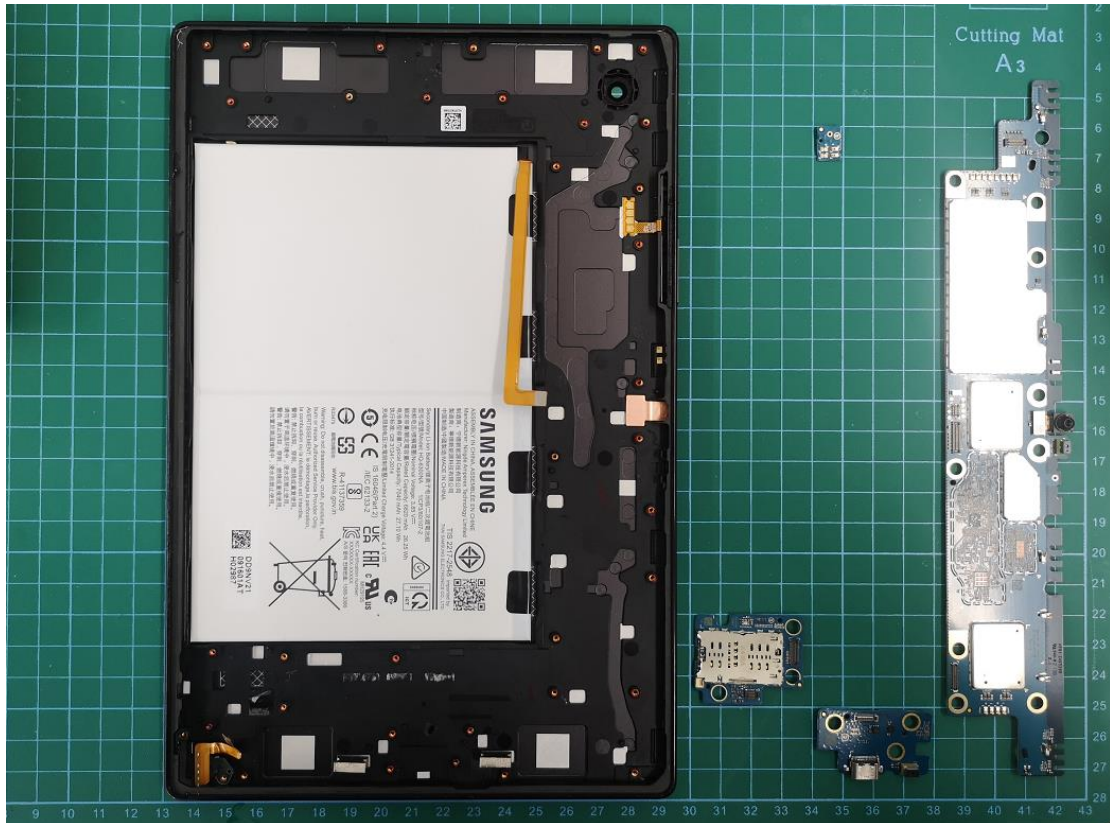
PCB04



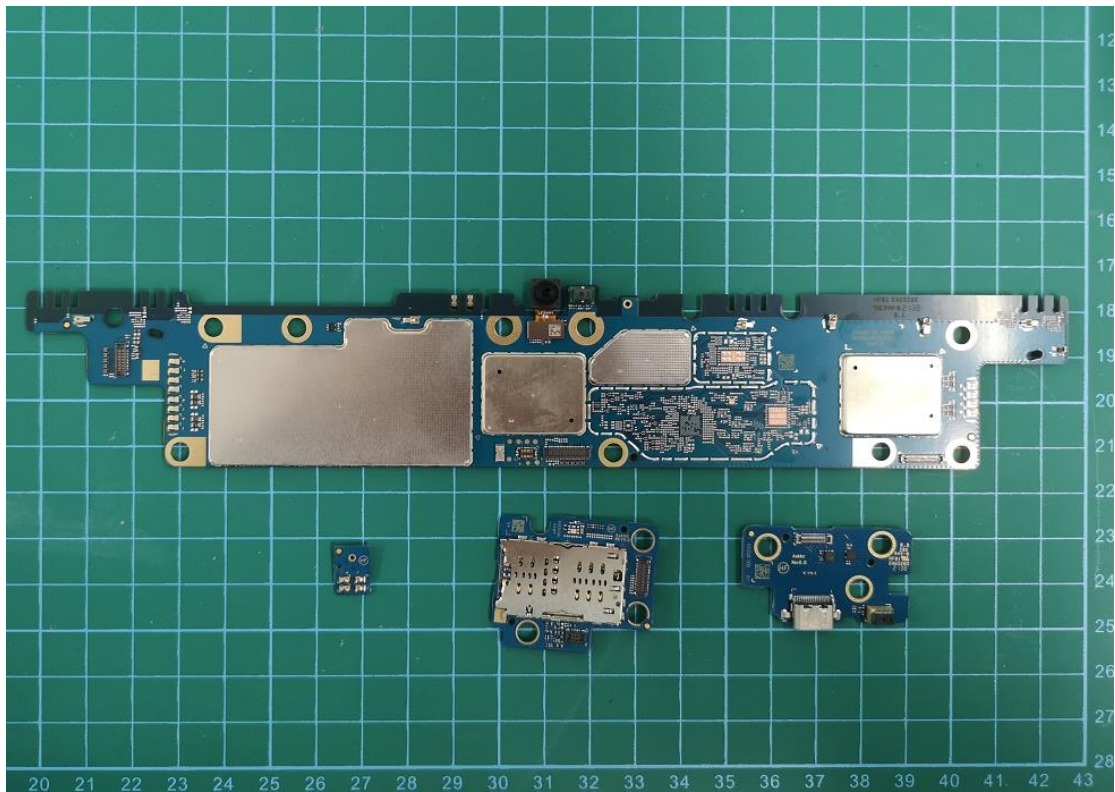
PCB05



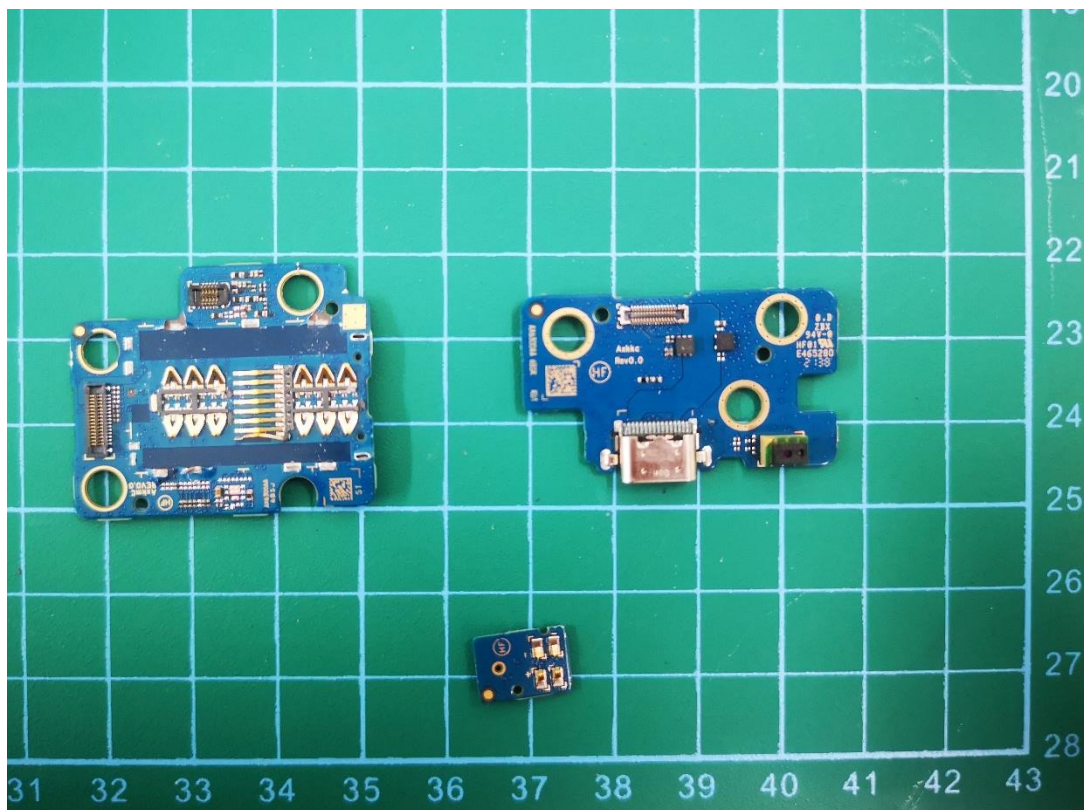
PCB06



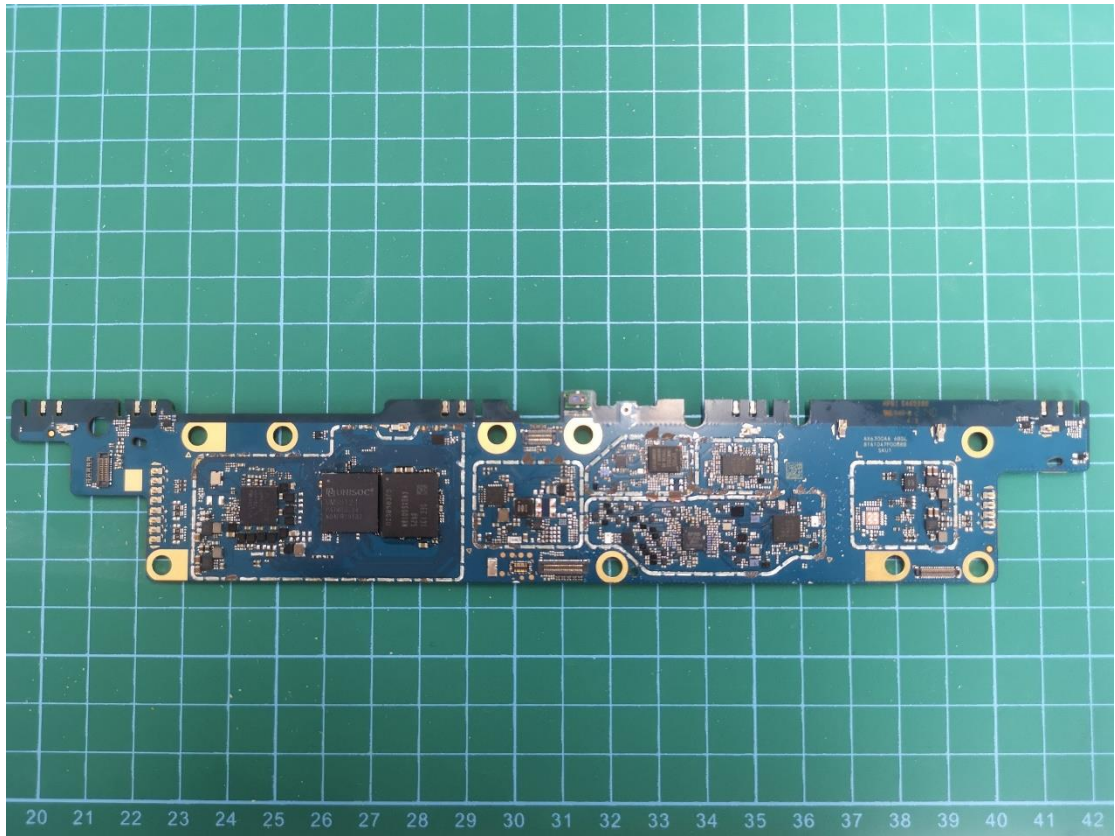
PCB07



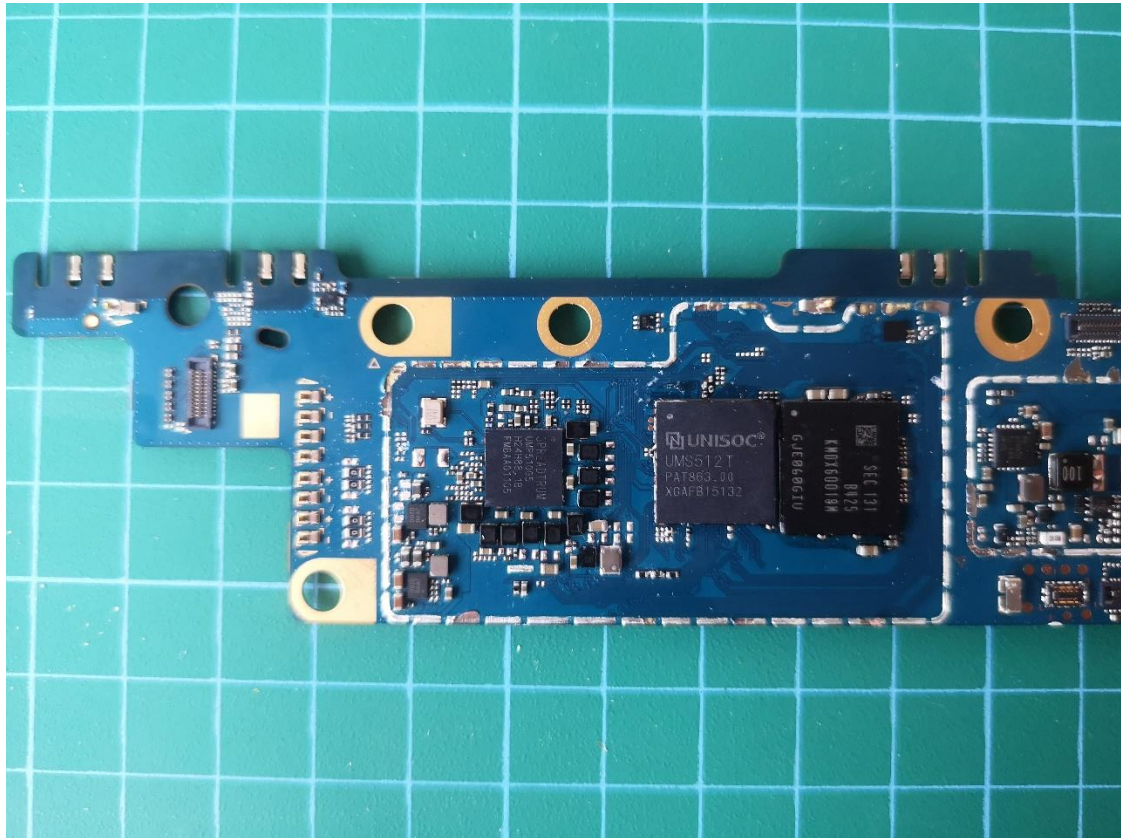
PCB08



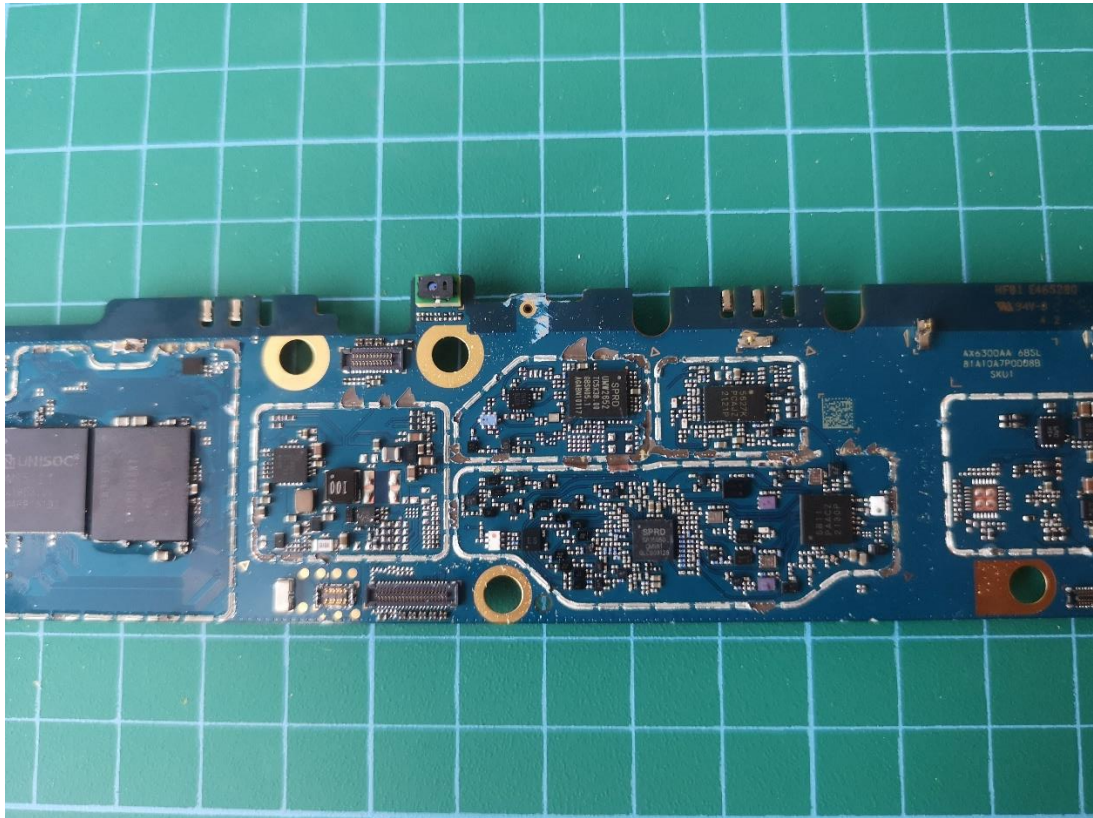
PCB09



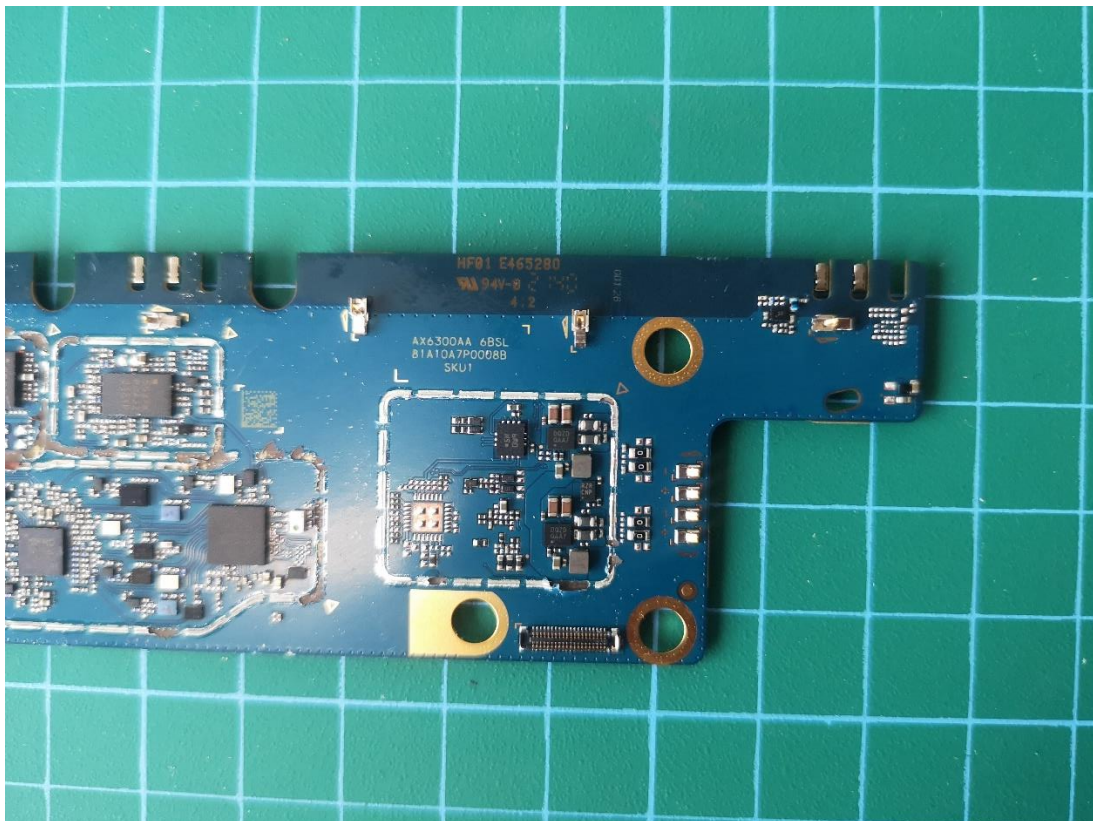
PCB10



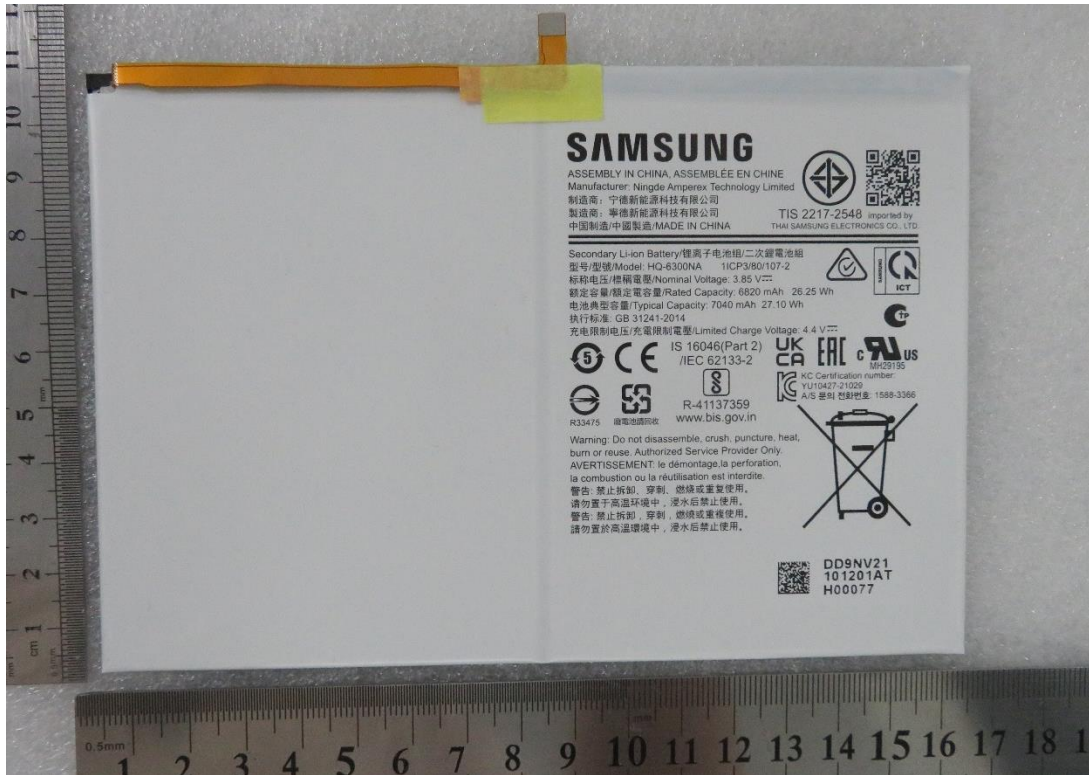
PCB11



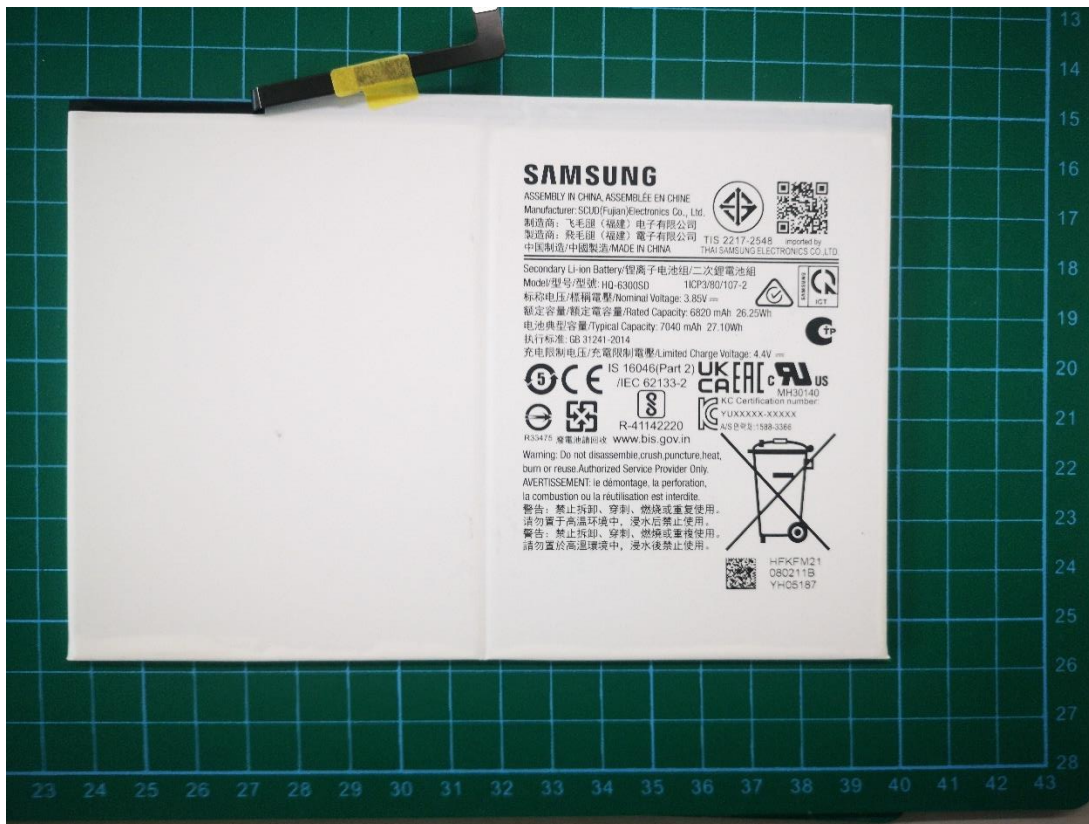
PCB12:



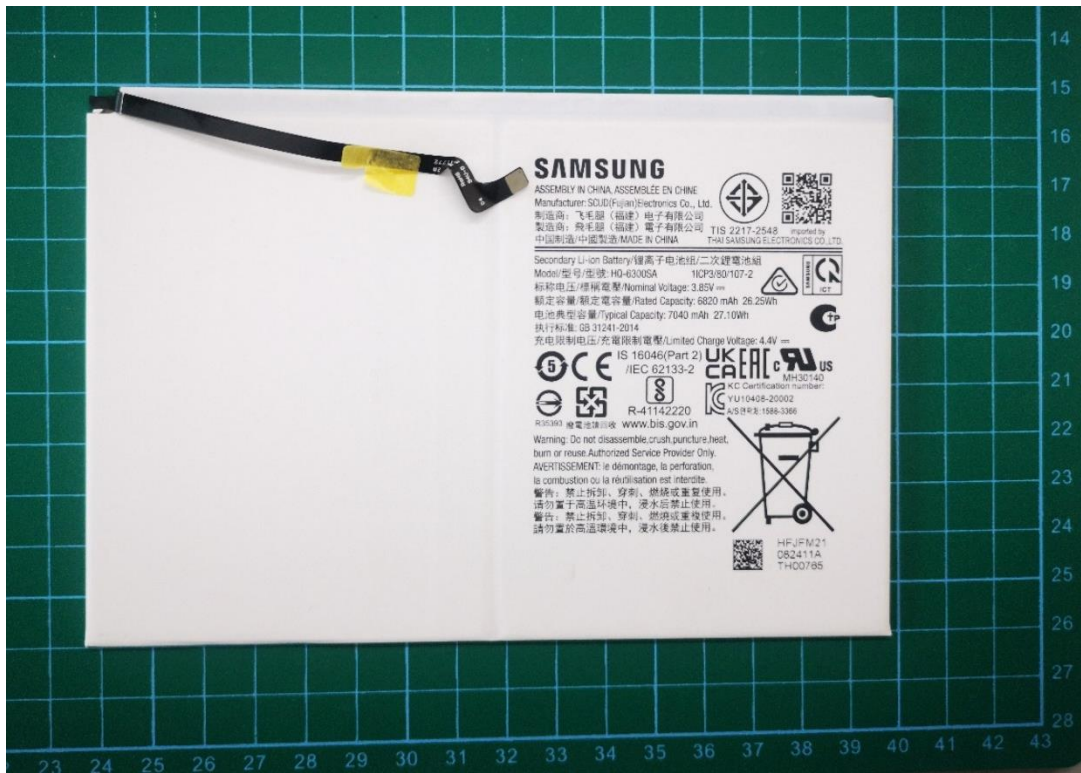
Battery01 HQ-6300NA :



Battery02 HQ-6300SD :



Battery03 HQ-6300SA :



SAMSUNG

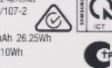
ASSEMBLY IN CHINA, ASSEMBLEE EN CHINE
Manufacturer: SUIJUN(Fujian)Electronics Co., Ltd.
製造商: 飞毛腿(福建)电子有限公司
中國製造/中國製造 MODE IN CHINA TIS 2217-2548 imported by
THAI SAMSUNG ELECTRONICS CO., LTD.

Secondary Li-ion Battery/锂离子电池/二次锂电池組
Model/型号/型號: HD-6300SA 10CP9/80107-2
标称电压/標稱電壓/Nominal Voltage: 3.85V ~
額定容量/額定電容量/Nominal Capacity: 6620 mAh 26.25Wh
電池典型容量/Typical Capacity: 7040 mAh 27.10Wh
執行標準: GS 31241-2014

充電限制電壓/充電限制電壓/Limited Charge Voltage: 4.4V ~
IS 16046(Part 2) UKERC
IEC 62133-2

R-41142220
R-41142220
www.bis.gov.in

Warning: Do not disassemble, crush, puncture, heat,
burn or reuse. Authorized Service Provider Only.
AVERTISSEMENT: le démontage, la perforation,
la combustion ou la réutilisation est interdite.
警告: 禁止拆卸、穿刺、燃燒或重複使用。
請勿置於高溫環境中, 浸水後禁止使用。
警告: 禁止拆卸、穿刺、燃燒或重複使用。
請勿置於高溫環境中, 浸水後禁止使用。



HFJFM21
DB2411A
THC0785