

Notifications

Change the notification settings.

On the Settings screen, tap Notifications .

- App icon badges : Change the settings for app icon badges.
- Do not disturb
 - ▶ SM-T505 : Set the device to mute incoming calls, notification sounds, and media, except for allowed exceptions.
 - ▶ SM-T500 : Set the device to mute notification sounds and media, except for allowed exceptions.
- Status bar : Set the device to display only three recent notifications and whether to show the remaining battery level in percentage on the status bar.
- Recently sent : View the apps that received recent notifications and change the notification settings. To customise notification settings for more apps, tap See all → ▼
→ All and select an app from the apps list.

Display

Options

Change the display and the Home screen settings.

On the Settings screen, tap Display .


- Brightness : Adjust the brightness of the display.
- Adaptive brightness : Set the device to keep track of your brightness adjustments and apply them automatically in similar lighting conditions.
- Night mode : Reduce eye strain by applying the dark theme when using the device at night or in a dark place. Refer to [Night mode](#) for more information.
- Screen mode : Change the screen mode to adjust the display's colour and contrast. Refer to [Changing the screen mode or adjusting the display colour \(SM-T500\)](#) for more information. (SM-T500)

- **Font size and style:** Change the font size and style.
- **Screen zoom:** Change the screen zoom setting.
- **Full screen apps:** Select apps to use with the full screen aspect ratio.
- **Screen timeout:** Set the length of time the device waits before turning off the display's backlight.
- **Home screen:** Configure settings for the Home screen, such as the layout.
- **Navigation bar:** Change the navigation bar settings. Refer to [Navigation bar \(soft buttons\)](#) for more information.
- **Screensaver:** Set the device to launch a screensaver when the device is charging. Refer to [Screensaver](#) for more information.

Night mode

Reduce eye strain by applying the dark theme when using the device at night or in a dark place.



- The dark theme may not be applied in some apps.
- You can quickly activate or deactivate night mode on the notification panel. Open the notification panel, swipe downwards on the notification panel, and then tap  (**Night mode**).

- 1 On the Settings screen, tap **Display** → **Night mode** and tap the **Turn on now** switch to activate it.
- 2 To set the schedule to apply night mode to the screen, tap the **Turn on as scheduled** switch to activate it and select an option.
 - **Sunset to sunrise:** Set the device to turn on night mode at night and turn it off in the morning based on your current location.
 - **Custom schedule:** Set a specific time to turn on and off night mode.

Changing the screen mode or adjusting the display colour (SM-T509)

Change the screen mode or adjust the display colour to your preference.

Changing the screen mode

On the Settings screen, tap Display → Screen mode and select a mode you want.

- Adaptive display : This optimises the colour range, saturation, and sharpness of your display. You can also adjust the display colour balance by colour value.
- AMOLED cinema : This is suitable for watching videos.
- AMOLED photo : This is suitable for viewing images.
- Basic : This is set as default and is suitable for general use.
- Reading mode : This switches the screen to Reading mode.



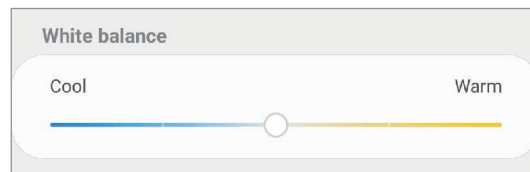
- You can adjust the display colour only in Adaptive display mode.
- Adaptive display mode may not be compatible with third-party apps.

Optimising the full screen colour balance

Optimise the display colour by adjusting the colour tones to your preference.

On the Settings screen, tap Display → Screen mode → Vivid and adjust the colour adjustment bar under White balance .

When you drag the colour adjustment bar towards Cool, the blue colour tone will increase. When you drag the bar towards Warm, the red colour tone will increase.




Adjusting the screen tone by colour value

Increase or lower certain colour tones by adjusting the Red, Green, or Blue value individually.

- 1 On the Settings screen, tap **Display** → **Screen mode** → **Vivid**.
- 2 Tap **Advanced settings**.
- 3 Adjust the **R** (Red), **G** (Green), or **B** (Blue) colour bar to your preference.
The screen tone screen will be adjusted.

Screensaver

You can set to display images as a screensaver when the screen turns off automatically. The screensaver will be displayed when the device is charging.

- 1 On the Settings screen, tap **Display** → **Screensaver** and tap the switch to activate it.
- 2 Select an option.
If you select **Photo Frame** or **Photos**, a slideshow with selected images will start. If you select **Photo Table**, selected images will appear as small cards and overlap.
- 3 Tap  to select albums for displaying images.
- 4 When you are finished, tap the Back button.
To preview the selected option, tap **Preview**.



When you tap the screen while your screensaver is displayed, the screen will turn on.

Wallpaper

Change the wallpaper settings for the Home screen and the locked screen.

On the Settings screen, tap Wallpaper .

Lock screen

Options

Change the settings for the locked screen.

On the Settings screen, tap Lock screen .



The available options may vary depending on the screen lock method selected.

- Screen lock type : Change the screen lock method.
- Smart Lock : Set the device to unlock itself when trusted locations or devices are detected. Refer to [Smart Lock](#) for more information.
- Secure lock settings : Change screen lock settings for the selected lock method.
- Clock style : Change the type and colour of the clock on the locked screen.
- Roaming clock : Change the clock to show both the local and home time zones on the locked screen when roaming. (SM-T509)
- FaceWidgets : Change the settings of the items displayed on the locked screen.
- Contact information : Set the device to show contact information, such as your email address, on the locked screen.
- Notifications : Set how to show notifications on the locked screen.
- App shortcuts : Select apps to display shortcuts to them on the locked screen.
- About Lock screen : View the Lock screen version and legal information.

Smart Lock

You can set the device to unlock itself and remain unlocked when trusted locations or devices are detected.

For example, if you have set your home as a trusted location, when you get home your device will detect the location and automatically unlock itself.



- This feature will be available to use after you set a screen lock method.
- If you do not use your device for four hours or when you turn on the device, you must unlock the screen using the pattern, PIN, or password you set.

- 1 On the Settings screen, tap **Lock screen** → **Smart Lock**.
- 2 Unlock the screen using the preset screen lock method.
- 3 Select an option and follow the on-screen instructions to complete the setup.

Security

Change the settings for securing the device.

On the Settings screen, tap **Security**.

- **Google Play Protect:** Set the device to check for harmful apps and behaviour and warn about potential harm and remove them.
- **Find My Mobile:** Activate or deactivate the Find My Mobile feature. Access the Find My Mobile website (findmymobile.samsung.com) to track and control your lost or stolen device.

You can also allow the Google location service to provide more accurate information about the location of your device.

- **Security update:** View the version of your device's software and check for updates.

- **Install unknown apps** : Set the device to allow the installation of apps from unknown sources.
- **Encrypt SD card** : Set the device to encrypt files on a memory card.
 - ⚠️ If you reset your device to the factory defaults with this setting enabled, the device will not be able to read your encrypted files. Disable this setting before resetting the device.
- **Other security settings** : Configure additional security settings.
- **Location** : Change settings for location information permissions.
- **App permissions** : View the list of features and apps that have permission to use them. You can also edit the permission settings.
- **Send diagnostic data** : Set the device to automatically send the device's diagnostic and usage information to Samsung. (SM-T509)
- **Receive marketing information** : Set whether to receive Samsung marketing information, such as special offers, membership benefits, and newsletters. (SM-T509)

Accounts and backup

Options

Sync, back up, or restore your device's data using Samsung Cloud. You can also sign in to accounts, such as your Samsung account or Google account, or transfer data to or from other devices via Smart Switch.

On the Settings screen, tap **Accounts and backup** .

- **Accounts** : Add your Samsung and Google accounts, or other accounts, to sync with.
- **Users** : Set up additional user accounts for other users to use the device with personalised settings, such as email accounts, wallpaper preferences, and more. Refer to [Users](#) for more information.
- **Backup and restore** : Keep your personal information, app data, and settings safe on your device. You can back up your sensitive information and access it later. You must sign in to your Google or Samsung account to back up or restore data.

- **Samsung Cloud:** Manage the content that you want to store securely in Samsung Cloud. Check the usage status of your Samsung Cloud storage, and sync, back up, and restore your data. Refer to [Samsung Cloud](#) for more information.
- **Smart Switch:** Launch Smart Switch and transfer data from your previous device. Refer to [Transferring data from your previous device \(Smart Switch\)](#) for more information.



Regularly back up your data to a safe location, such as Samsung Cloud or a computer, so that you can restore it if the data is corrupted or lost due to an unintended factory data reset.

Users

Set up additional user accounts for other users to use the device with personalised settings, such as email accounts, wallpaper preferences, and more.

Following types of user accounts are available:

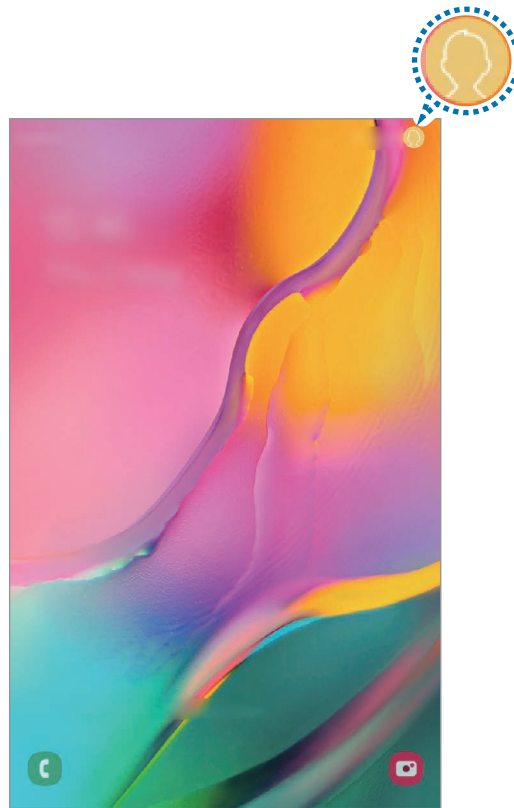
- **Administrator:** The administrator account is created only when setting up the device for the first time, and cannot be created more than one. This account has full control of the device including user account management. You can add or delete user accounts only when using this account.
- **Guest:** This account allows guests to access the device. Information and data used during a guest session is temporarily stored. Each time you use this account, you are asked whether to continue the previous guest session or reset it.
- **New user:** This account allows users to access their own apps and content, and customise the device settings that affect all accounts.

Adding users

- 1 On the Settings screen, tap **Accounts and backup** → **Users**.
- 2 Tap **Add user or profile** → **Set up now**.
The device will switch to a new user account and the default locked screen will appear on the screen.
- 3 Unlock the device and follow the on-screen instructions to complete the account setup.

Switching users

Tap the user account icon at the top of the locked screen and select an account to switch to.



Locked screen

Managing users

When using the administrator account, you can delete accounts or change account settings.

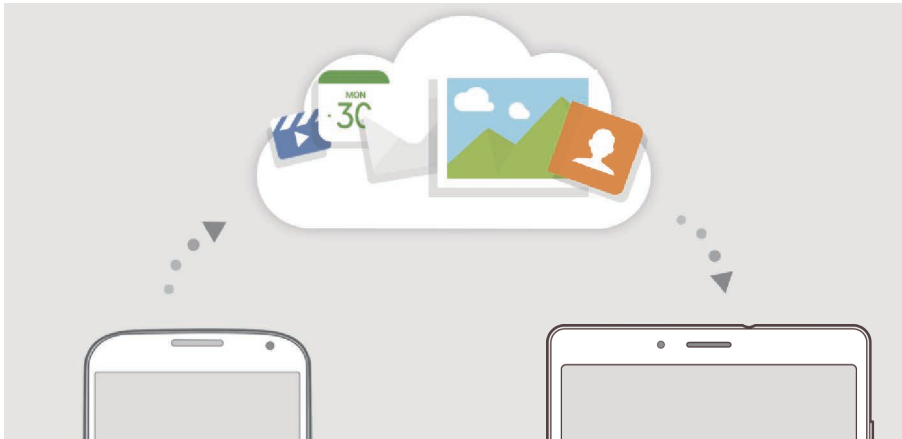
On the Settings screen, tap **Accounts and backup** → **Users**.

To delete a user account, tap  next to the account and tap **Delete user**.

To change an account's settings, tap  next to an account.

Samsung Cloud

Sync the data saved in your device, such as images and videos, with Samsung Cloud and view the data you have saved on Samsung Cloud. You can also back up your device's data to Samsung Cloud and restore it later.



To use Samsung Cloud, you must sign in to your Samsung account.

Syncing data

You can sync data saved in your device, such as events, with Samsung Cloud and access it from other devices.

- 1 On the Settings screen, tap **Accounts and backup** → **Samsung Cloud**.
- 2 Tap **:** → **Settings** → **Sync and auto backup settings** → **Sync**.
- 3 Tap the switches next to the items you want to sync with.



You can check the saved data or change the settings by tapping **Other synced data** or **Samsung Cloud Drive**.

Backing up data

You can back up your device's data to Samsung Cloud.

- 1 On the Settings screen, tap **Accounts and backup** → **Samsung Cloud** → **Back up this tablet**.
- 2 Tick items you want to back up and tap **Back up**.
- 3 Tap **Done**.



- Some data will not be backed up. To check which data will be backed up, on the Settings screen, tap **Accounts and backup** → **Samsung Cloud** → **Back up this tablet**.
- To view the backup data for other devices in your Samsung Cloud, on the Settings screen, tap **Accounts and backup** → **Samsung Cloud** → **Restore data** → ▼, and then select a device you want.

Restoring data

You can restore your backup data from Samsung Cloud to your device.

- 1 On the Settings screen, tap **Accounts and backup** → **Samsung Cloud**.
- 2 Tap **Restore data** → ▼ and select a device you want.
- 3 Tick items you want to restore and tap **Restore**.

Google

Configure settings for some features provided by Google.

On the Settings screen, tap **Google**.

Advanced features

Options

Activate advanced features and change the settings that control them.

On the Settings screen, tap **Advanced features** .



Excessive shaking or an impact to the device may cause an unintended input for some features using sensors.

- **Smart pop-up view** : Select apps to view their notifications via pop-up windows. When using this feature, you can quickly view the contents via pop-up windows by tapping the icon on the screen.



This feature is only available in apps that support the Multi window feature.

- **Direct share** : Set the device to display the people you contacted on the sharing options panel to allow you to share content directly.
- **Reduce animations** : Set the device to reduce the screen effects of certain actions, such as opening or closing apps.
- **Motions and gestures** : Activate the motion feature and configure settings. Refer to [Motions and gestures](#) for more information.

Motions and gestures

Activate the motion feature and configure settings.

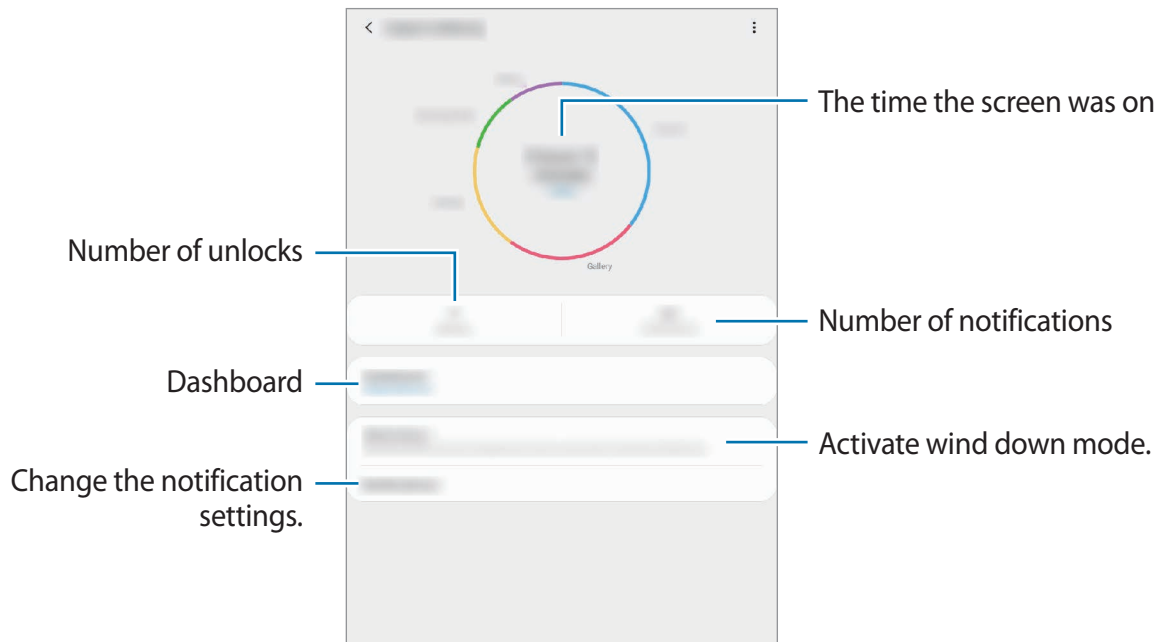
On the Settings screen, tap **Advanced features** → **Motions and gestures** .

- **Smart stay** : Set the device to prevent the display from turning off while you are looking at it.
- **Swipe to call or send messages** : Set the device to make a call or send a message when you swipe to the right or left on a contact or a phone number in the Phone or Contacts app. (SM-T505)

Digital wellbeing

View the daily usage history of your device. You can see information such as how long the screen was on and how many times you opened apps or used certain features. You can also limit usage time or change the notification settings for each app.

On the Settings screen, tap **Digital wellbeing**.



Setting timers for apps

You can limit the daily usage time for each app by setting a timer. When you reach the limit, the app will be deactivated and you cannot use it.

- 1 On the Settings screen, tap **Digital wellbeing** → **Dashboard**.
- 2 Tap **No timer** next the app you want and set the time.

Activating wind down mode

You can activate wind down mode to reduce eye strain before sleeping and prevent your sleep from being disturbed.

- 1 On the Settings screen, tap Digital wellbeing → Wind down and tap the Turn on now switch to activate it.
- 2 Turn on the switch to activate the feature you want.
 - Greyscale : Displays colours on the screen as grey tones.
 - Do not disturb
 - ▶ SM-T509: Set the device to mute incoming calls, notification sounds, and media, except for allowed exceptions.
 - ▶ SM-T509: Set the device to mute notification sounds and media, except for allowed exceptions.
- 3 To set the schedule to activate wind down mode, tap the Turn on as scheduled switch to activate it, tap Set schedule , and then set the time.