

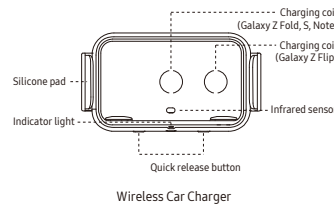
QUICK START GUIDE

EP-H5300 Wireless Car Charger

SAMSUNG

Leaflet.0813V.1
Printed in China

Contains



Clip (with support frame)



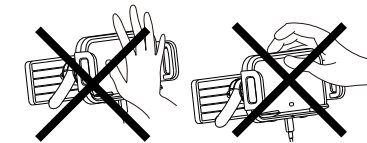
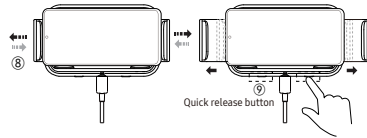
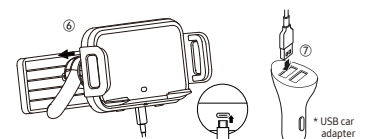
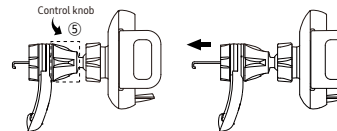
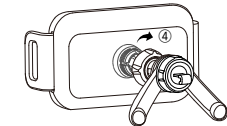
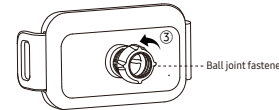
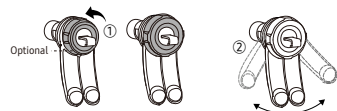
Clip fastener (Optional)



USB Type-C cable



Quick start guide



Quick Guide

- Replace the clip fastener ① which is optional according to the shape of your car's air vent (if you need).
- Set the support frame ② with proper angle to suit for your car's air vent.
- Remove the ball joint fastener ③ from wireless car charger by rotating it counterclockwise.
- Put the clip through the ball joint fastener, and assemble the clip ④ on the wireless car charger.
- Rotate the control knob ⑤ to adjust the length of metal hook, so that the wireless car charger which has been assembled already can be locked on the air vent of car ⑥, then connect the USB Type C cable to the port.
- Connect the other end of the cable ⑦ to the USB-A port of a USB car adapter* that fits into the cigarette lighter socket.
- Put the smart device close to the infrared sensor, and the wireless car charger will open automatically ⑧, then attach the smart device to the wireless car charger.
- Press the quick release button ⑨ to take the smart device off the wireless car charger.

- * Use the enclosed cable for power connection (USB car adapter is sold separately).
- * Use only Samsung-approved car adapters that support 15W or higher.
- * The maximum possible length of the metal hook is 35 mm.
- * The indicator will turn red → green → yellow when the wireless car charger powers on.
- * Visit www.samsung.com to view the user manual and the safety information.

- Please check the shape of the air vent and the wing length of air vent.
- Do not push or pull the wireless car charger when it has been locked on the air vent.
- Assembly must be completed before installation on air vent.
- Before disassembly, wireless car charger must be removed from air vent.
- Before remove the wireless car charger from the air vent, please make sure to release the metal hook.
- Install the wireless car charger at the passenger side air vent so that it does not only interfere with driving, but also interfere with vehicle buttons and monitors.
- The manufacturer is not responsible for any damage to the air vent caused by negligence in use.

FCC regulatory conformance

This device complies with part 15 of the FCC Rules. Operation is subject to the following two conditions: (1) This device may not cause harmful interference, and (2) this device must accept any interference received, including interference that may cause undesired operation.

NOTE:

This equipment has been tested and found to comply with the limits for a Class B digital device, pursuant to part 15 of the FCC Rules. These limits are designed to provide reasonable protection against harmful interference in a residential installation. This equipment generates, uses and can radiate radio frequency energy and, if not installed and used in accordance with the instructions, may cause harmful interference to radio communications. However, there is no guarantee that interference will not occur in a particular installation. If this equipment does cause harmful interference to radio or television reception, which can be determined by turning the equipment off and on, the user is encouraged to try to correct the interference by one or more of the following measures:

- Reorient or relocate the receiving antenna.
- Increase the separation between the equipment and receiver.
- Connect the equipment into an outlet on a circuit different from that to which the receiver is connected.
- Consult the dealer or an experienced radio/TV for help.

NOTE:

The manufacturer is not responsible for any radio or TV interference caused by unauthorized modifications to this equipment. Such modifications could void the user's authority to operate the equipment.

RF Exposure

This equipment complies with FCC radiation exposure limits set forth uncontrolled environment.

Samsung Electronics America, Inc.
85 Challenger Road, Ridgefield Park, New Jersey 07660
Phone: 1-800-SAMSUNG (726-7864)

IC regulatory conformance

This device complies with CAN ICES-3 (B)/NMB-3(B). This device complies with Industry Canada licence-exempt RSS standard(s). Operation is subject to the following two conditions: (1) this device may not cause harmful interference, and (2) this device must accept any interference received, including interference that may cause undesired operation.

Déclaration d'IC sur l'exposition aux radiations:

Cet équipement est conforme aux limites d'exposition aux radiations définies par le Canada pour des environnements non contrôlés. Cet émetteur ne doit pas être installé au même endroit ni utilisé avec une autre antenne ou un autre émetteur.

Le présent appareil est conforme aux CNR d'Industrie Canada applicables aux appareils radio exempts de licence. L'exploitation est autorisée aux deux conditions suivantes : (1) l'appareil ne doit pas produire de brouillage, et (2) l'utilisateur de l'appareil doit accepter tout brouillage radioélectrique subi, même si le brouillage est susceptible d'en compromettre le fonctionnement.

RF Exposure

This equipment complies with IC radiation exposure limits set forth for an uncontrolled environment.

EU regulatory conformance:

RF exposure information: The EIRP power of the device at EN62479: 2010. RF exposure assessment has been performed to prove that this unit will not generate the harmful EM emission Recommendation (1999/519/EC).

Hereby, Lineprinting, declares that the radio equipment type EP-H5300 is in compliance with Directive 2014/53/EU. The full text of the EU declaration of conformity is available at the following internet address: www.samsung.com

UK Regulatory Conformance

Hereby, we (Lineprinting) declared that this device is in compliance with the essential requirements and other relevant provisions of Radio Equipment Regulations 2017. The product can be used in EU countries without any restriction.

Product specification

Product name: Wireless Car Charger
Model: EP-H5300
Input: 5 V $\overline{\text{---}}$; 9 V $\overline{\text{---}}$; 1.67 A
(Support QC2.0/3.0, PD2.0/3.0, AFC Protocol)

Wireless output: Max 9W of wireless power
Charging speed may vary depending on device model and condition of the adapter or cable.
Actual charging speed may also vary depending on the actual usage, temperature inside/outside the vehicle, charging conditions, and other factors.
Operating temperature: -10~40°C

Correct disposal

This marking on the product, accessories or literature and without the bar on batteries indicates that the product, battery and its electronic accessories (e.g. charger, headset, USB cable) should not be disposed of with other household waste.

AEEO Yönetmeliğine Uygundur
This product is India RoHS compliant
Ce produit est en conformité avec la directive RoHS
Samsung / PO Box 12987, Dublin. IE / Yateley,
GU46 6GG. UK

For information on Samsung's environmental commitments and product regulatory obligations, e.g. REACH, visit our sustainability page available via www.samsung.com

Your consumer rights are governed by the law of the country in which you purchased the product. Please contact your service provider for more information.

Manufacturer: Jiangxi Lineprinting Co., Ltd.
Address: No.268, Nantang Road, Jinggangshan Economic Development Zone, Ji'an City, Jiangxi, China