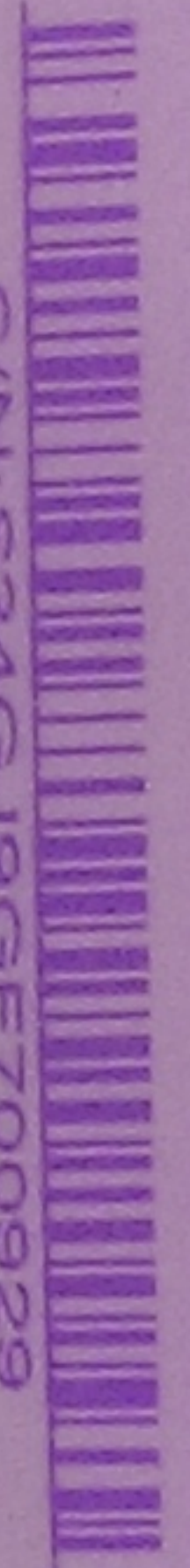


Rechargeable Li-ion Battery
Model Name: EWZU20-1AYBAS
Rating: 3.7V 2500mAh ± 9.25Whr 額定電壓: 3.7Vdc 額定電量: 2500mAh
Assembled in China
Tan Yu Communication Technology (Kunshan)
Warning: To reduce risk of fire or burns, do not disassemble, crush, puncture, short circuit, external contacts or dispose of in fire or water.
警告: 為降低火災或灼傷之風險, 請勿拆解、壓碎、刺穿、短接外部接觸點或將電池丟入火中或水中。



S/N: S34GJ9GF700929

Model : ST500LM012
HDD P/N : HN-M500MBB/SZ2
LBA 976,773,168 500,0GB



REV. A
F/W : 2BA30001

SAMSUNG

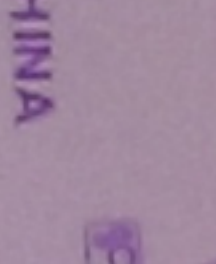
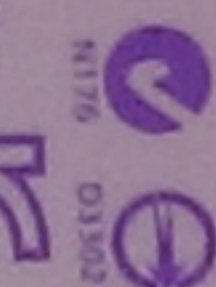
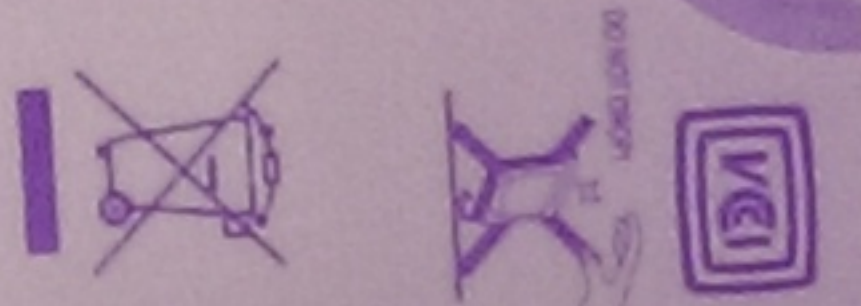


Momentum

HARD DISK DRIVE RATED: DC+5V 0.85A

Seagate Technology LLC

WARNING: SENSITIVE PARTS INSIDE FAILURE MAY OCCUR IF SUBJECTED TO EXCESSIVE SHOCK. TOUCHING THE CIRCUITRY MAY CAUSE DAMAGE. REMOVING THIS COVER WILL VOID ANY AND ALL WARRANTIES.



Product of CHINA

HDD Mfg by Seagate Technology LLC

DOM: 07/2014

Site: DGT

KCC-REM-STX-
Momentus-C

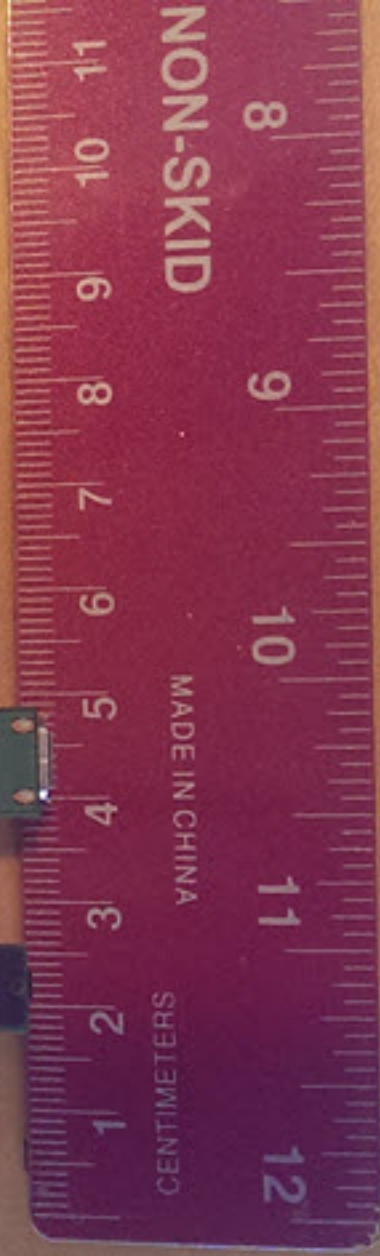
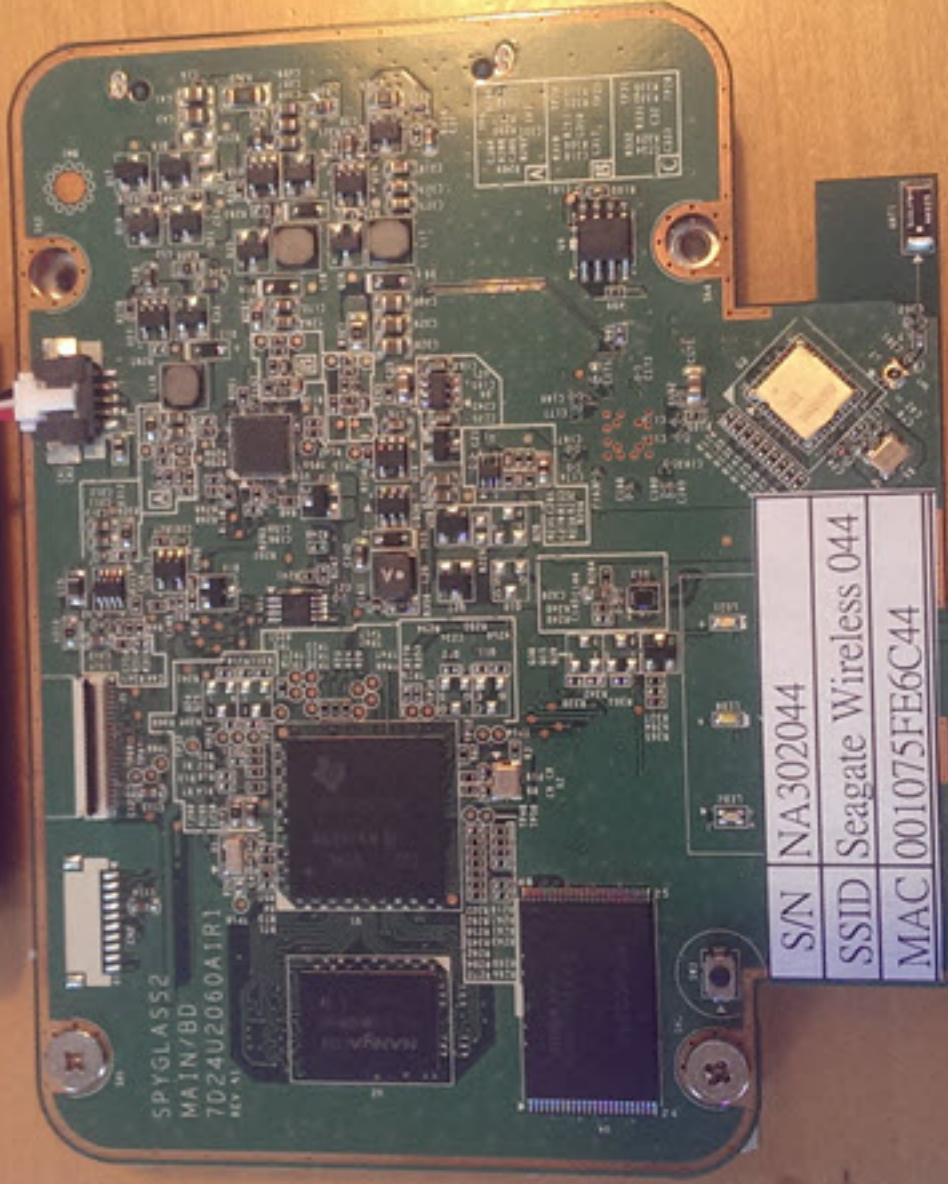
European Regulatory Address:

Seagate Technology Intl
Koothovenlaan 1
1119 NB Schiphol-Rijk,
The Netherlands



P/N : F5932-0921-R01BU

Seagate Technology LLC
HDD Mfg by Seagate Technology LLC
DOM: 07/2014
Site: DGT



S/N	NA302044
SSID	Seagate Wireless 044
MAC	001075FE6C44

SPYGLASS2
MAIN/BD
7024U2060A1R1
REV. 1.0



Model: ST500LM012
HDD P/N: HN-M500MB/SZ2
LBA 976,773,168 500,000
REV. A
F/W: 2S3A0001
WARRANTY VOID IF REMOVED

SAMSUNG
Momentus

Product of CHINA
KCC by Sage Technology, LLC
DOM: 05/2014
S/N: DOT
KCC-NEM-STX
Momentus-C

European Regulatory Address:
Sage Technology Int'l
Kooijvenlaan 1
1119 NB Schiphol-Rijk,
The Netherlands

DO NOT LOSE

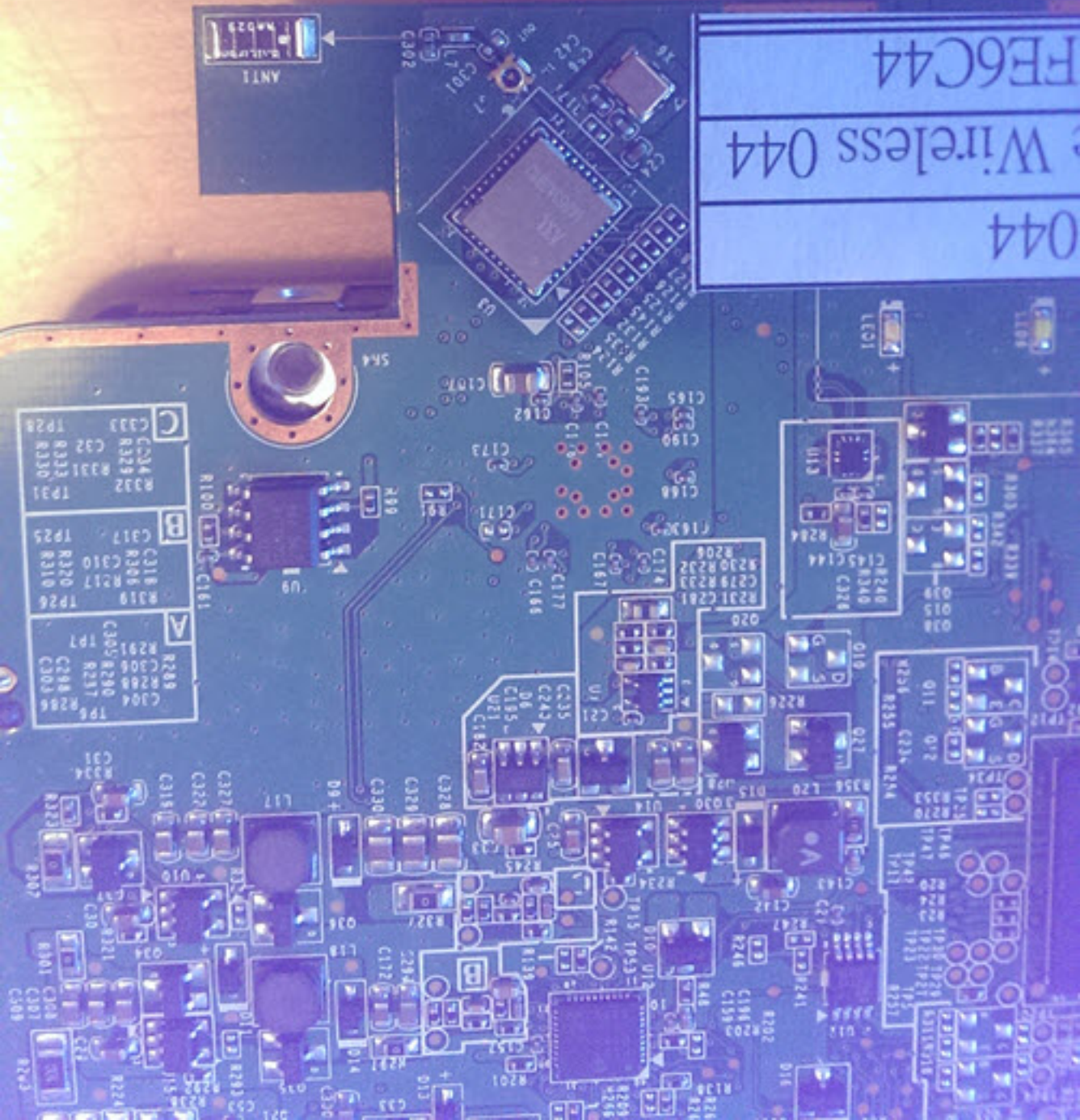
WARNING: BEFORE PARTS REPAIR, PLEASE READ OWNER'S MANUAL TO ENSURE PROPER TOOLING.
THE CABLES MUST BE CALIBER CHECKED. REMOVING THE CABLE WILL VOID ALL WARRANTIES.

MADE IN CHINA BMTD DC+5V 0.85A

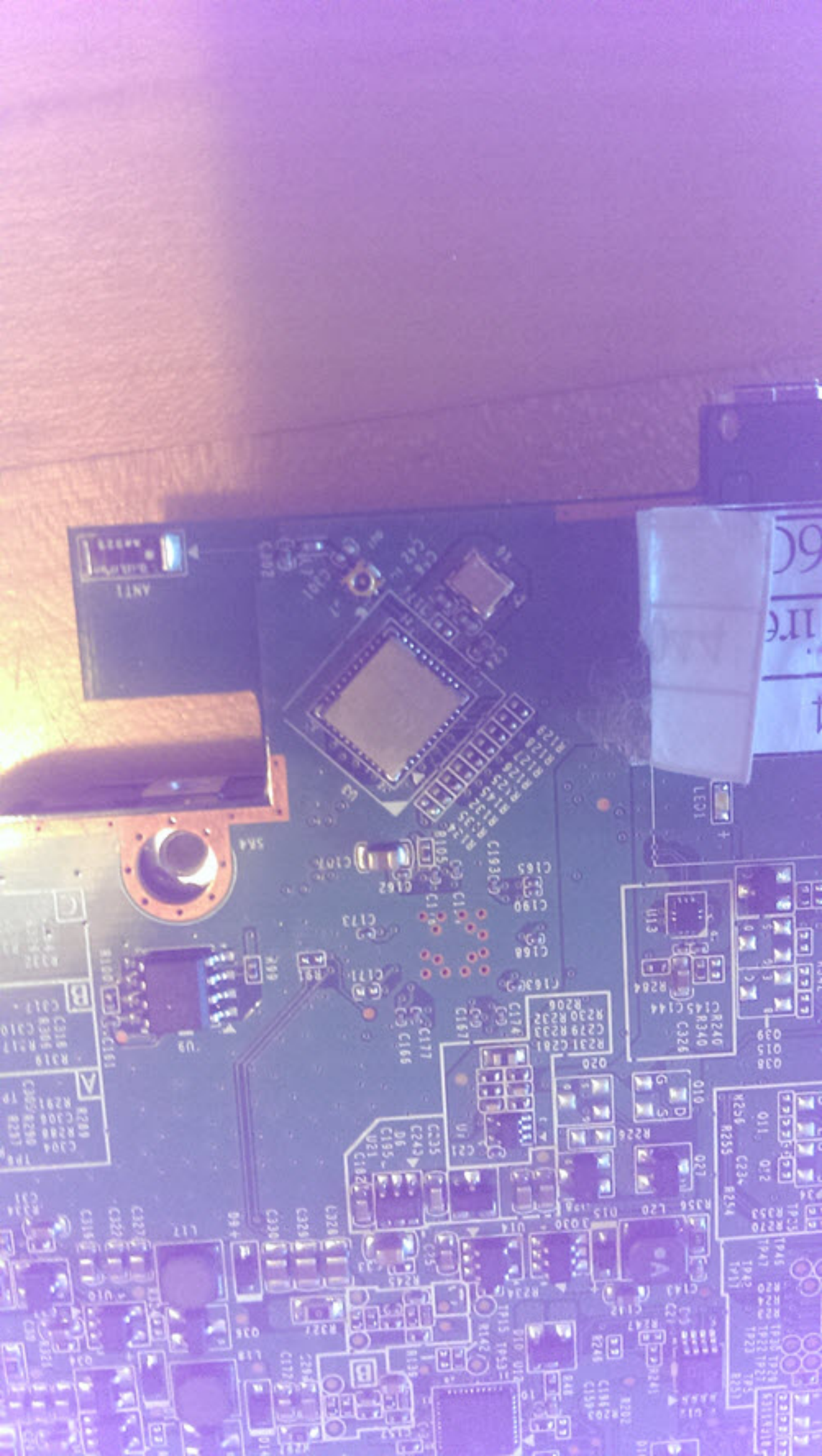
http://www.samsung.com

P/N: P7093-092A-A115B

044
Wireless 044
FE6C44



- | A | B | C |
|------|------|------|
| R289 | R318 | R324 |
| R290 | R319 | R325 |
| R291 | R320 | R326 |
| R292 | R321 | R327 |
| R293 | R322 | R328 |
| R294 | R323 | R329 |
| R295 | R324 | R330 |
| R296 | R325 | R331 |
| R297 | R326 | R332 |
| R298 | R327 | R333 |
| R299 | R328 | R334 |
| R300 | R329 | R335 |
| R301 | R330 | R336 |
| R302 | R331 | R337 |
| R303 | R332 | R338 |
| R304 | R333 | R339 |
| R305 | R334 | R340 |
| R306 | R335 | R341 |
| R307 | R336 | R342 |
| R308 | R337 | R343 |
| R309 | R338 | R344 |
| R310 | R339 | R345 |
| R311 | R340 | R346 |
| R312 | R341 | R347 |
| R313 | R342 | R348 |
| R314 | R343 | R349 |
| R315 | R344 | R350 |
| R316 | R345 | R351 |
| R317 | R346 | R352 |
| R318 | R347 | R353 |
| R319 | R348 | R354 |
| R320 | R349 | R355 |
| R321 | R350 | R356 |
| R322 | R351 | R357 |
| R323 | R352 | R358 |
| R324 | R353 | R359 |
| R325 | R354 | R360 |
| R326 | R355 | R361 |
| R327 | R356 | R362 |
| R328 | R357 | R363 |
| R329 | R358 | R364 |
| R330 | R359 | R365 |
| R331 | R360 | R366 |
| R332 | R361 | R367 |
| R333 | R362 | R368 |
| R334 | R363 | R369 |
| R335 | R364 | R370 |
| R336 | R365 | R371 |
| R337 | R366 | R372 |
| R338 | R367 | R373 |
| R339 | R368 | R374 |
| R340 | R369 | R375 |
| R341 | R370 | R376 |
| R342 | R371 | R377 |
| R343 | R372 | R378 |
| R344 | R373 | R379 |
| R345 | R374 | R380 |
| R346 | R375 | R381 |
| R347 | R376 | R382 |
| R348 | R377 | R383 |
| R349 | R378 | R384 |
| R350 | R379 | R385 |
| R351 | R380 | R386 |
| R352 | R381 | R387 |
| R353 | R382 | R388 |
| R354 | R383 | R389 |
| R355 | R384 | R390 |
| R356 | R385 | R391 |
| R357 | R386 | R392 |
| R358 | R387 | R393 |
| R359 | R388 | R394 |
| R360 | R389 | R395 |
| R361 | R390 | R396 |
| R362 | R391 | R397 |
| R363 | R392 | R398 |
| R364 | R393 | R399 |
| R365 | R394 | R400 |
| R366 | R395 | R401 |
| R367 | R396 | R402 |
| R368 | R397 | R403 |
| R369 | R398 | R404 |
| R370 | R399 | R405 |
| R371 | R400 | R406 |
| R372 | R401 | R407 |
| R373 | R402 | R408 |
| R374 | R403 | R409 |
| R375 | R404 | R410 |
| R376 | R405 | R411 |
| R377 | R406 | R412 |
| R378 | R407 | R413 |
| R379 | R408 | R414 |
| R380 | R409 | R415 |
| R381 | R410 | R416 |
| R382 | R411 | R417 |
| R383 | R412 | R418 |
| R384 | R413 | R419 |
| R385 | R414 | R420 |
| R386 | R415 | R421 |
| R387 | R416 | R422 |
| R388 | R417 | R423 |
| R389 | R418 | R424 |
| R390 | R419 | R425 |
| R391 | R420 | R426 |
| R392 | R421 | R427 |
| R393 | R422 | R428 |
| R394 | R423 | R429 |
| R395 | R424 | R430 |
| R396 | R425 | R431 |
| R397 | R426 | R432 |
| R398 | R427 | R433 |
| R399 | R428 | R434 |
| R400 | R429 | R435 |
| R401 | R430 | R436 |
| R402 | R431 | R437 |
| R403 | R432 | R438 |
| R404 | R433 | R439 |
| R405 | R434 | R440 |
| R406 | R435 | R441 |
| R407 | R436 | R442 |
| R408 | R437 | R443 |
| R409 | R438 | R444 |
| R410 | R439 | R445 |
| R411 | R440 | R446 |
| R412 | R441 | R447 |
| R413 | R442 | R448 |
| R414 | R443 | R449 |
| R415 | R444 | R450 |
| R416 | R445 | R451 |
| R417 | R446 | R452 |
| R418 | R447 | R453 |
| R419 | R448 | R454 |
| R420 | R449 | R455 |
| R421 | R450 | R456 |
| R422 | R451 | R457 |
| R423 | R452 | R458 |
| R424 | R453 | R459 |
| R425 | R454 | R460 |
| R426 | R455 | R461 |
| R427 | R456 | R462 |
| R428 | R457 | R463 |
| R429 | R458 | R464 |
| R430 | R459 | R465 |
| R431 | R460 | R466 |
| R432 | R461 | R467 |
| R433 | R462 | R468 |
| R434 | R463 | R469 |
| R435 | R464 | R470 |
| R436 | R465 | R471 |
| R437 | R466 | R472 |
| R438 | R467 | R473 |
| R439 | R468 | R474 |
| R440 | R469 | R475 |
| R441 | R470 | R476 |
| R442 | R471 | R477 |
| R443 | R472 | R478 |
| R444 | R473 | R479 |
| R445 | R474 | R480 |
| R446 | R475 | R481 |
| R447 | R476 | R482 |
| R448 | R477 | R483 |
| R449 | R478 | R484 |
| R450 | R479 | R485 |
| R451 | R480 | R486 |
| R452 | R481 | R487 |
| R453 | R482 | R488 |
| R454 | R483 | R489 |
| R455 | R484 | R490 |
| R456 | R485 | R491 |
| R457 | R486 | R492 |
| R458 | R487 | R493 |
| R459 | R488 | R494 |
| R460 | R489 | R495 |
| R461 | R490 | R496 |
| R462 | R491 | R497 |
| R463 | R492 | R498 |
| R464 | R493 | R499 |
| R465 | R494 | R500 |



ANT1

LED1

ANT1

ANT1

ANT1

ANT1

ANT1

ANT1

ANT1

ANT1

ANT1

ANT1

ANT1

ANT1

ANT1

ANT1

ANT1

ANT1

ANT1

ANT1

ANT1

ANT1

ANT1

ANT1

ANT1

ANT1

ANT1

ANT1

ANT1

ANT1

ANT1

ANT1

ANT1

ANT1

ANT1

ANT1

ANT1

ANT1

ANT1

ANT1

ANT1

ANT1

ANT1

ANT1

ANT1

ANT1

ANT1

ANT1

ANT1

ANT1

ANT1

ANT1

ANT1

ANT1

ANT1

ANT1

ANT1

ANT1

ANT1

ANT1

ANT1

ANT1

ANT1

ANT1

ANT1

ANT1

ANT1

ANT1

ANT1

ANT1

ANT1

ANT1

ANT1

ANT1

ANT1

ANT1

ANT1

ANT1

ANT1

ANT1

ANT1

ANT1

ANT1

ANT1

ANT1

ANT1

ANT1

ANT1

ANT1

ANT1

ANT1

ANT1

ANT1

ANT1

ANT1

ANT1

ANT1

ANT1

ANT1

ANT1

ANT1

ANT1

ANT1

ANT1

ANT1

ANT1

ANT1

ANT1

ANT1

ANT1

ANT1

ANT1

ANT1

ANT1

ANT1

ANT1

ANT1

ANT1

ANT1

ANT1

ANT1

ANT1

ANT1

ANT1

ANT1

ANT1

ANT1

ANT1

ANT1

ANT1

ANT1

ANT1

ANT1

ANT1

ANT1

ANT1

ANT1

ANT1

ANT1

ANT1

ANT1

ANT1

ANT1

ANT1

ANT1

ANT1

ANT1

ANT1

ANT1

ANT1

ANT1

ANT1

ANT1

ANT1

ANT1

ANT1

ANT1

ANT1

ANT1

ANT1

ANT1

ANT1

ANT1

ANT1

ANT1

ANT1

ANT1

ANT1

ANT1

ANT1

ANT1

ANT1

ANT1

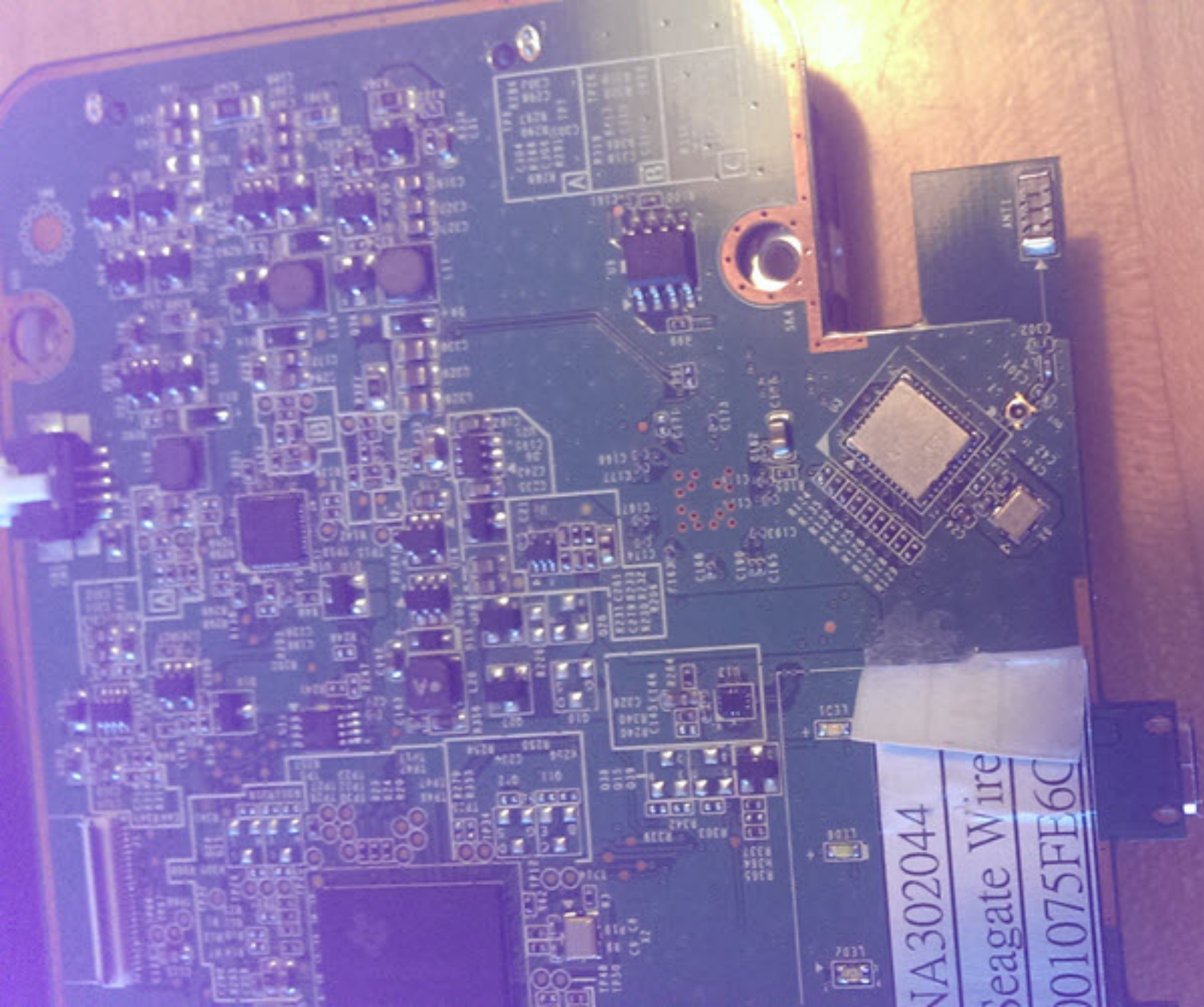
ANT1

ANT1

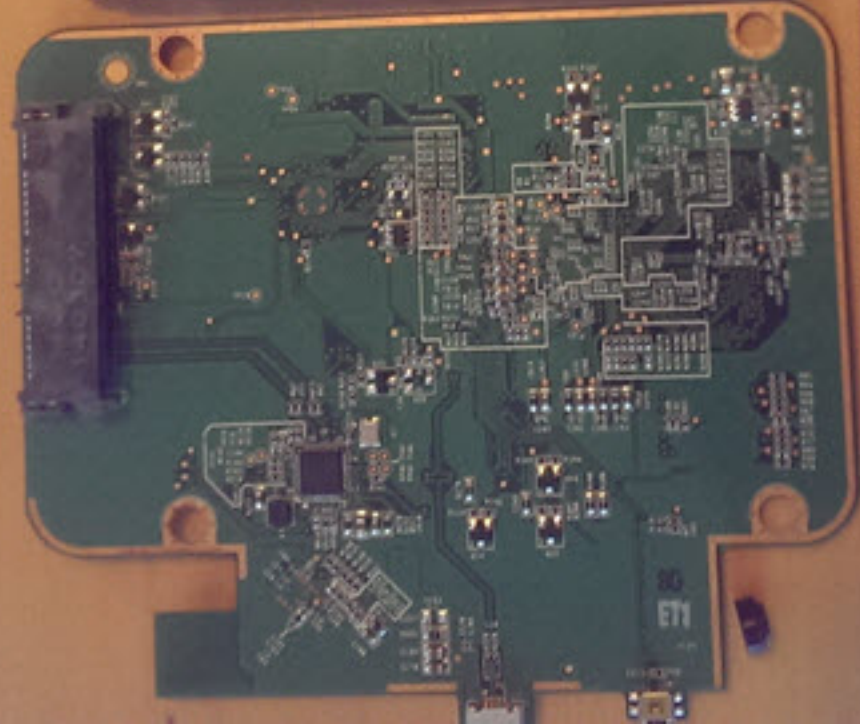
ANT1

ANT1

ANT1



NA302044
Seagate Wire
001075FE6C



NON-SKID

MADE IN CHINA

SMI15WLN23

