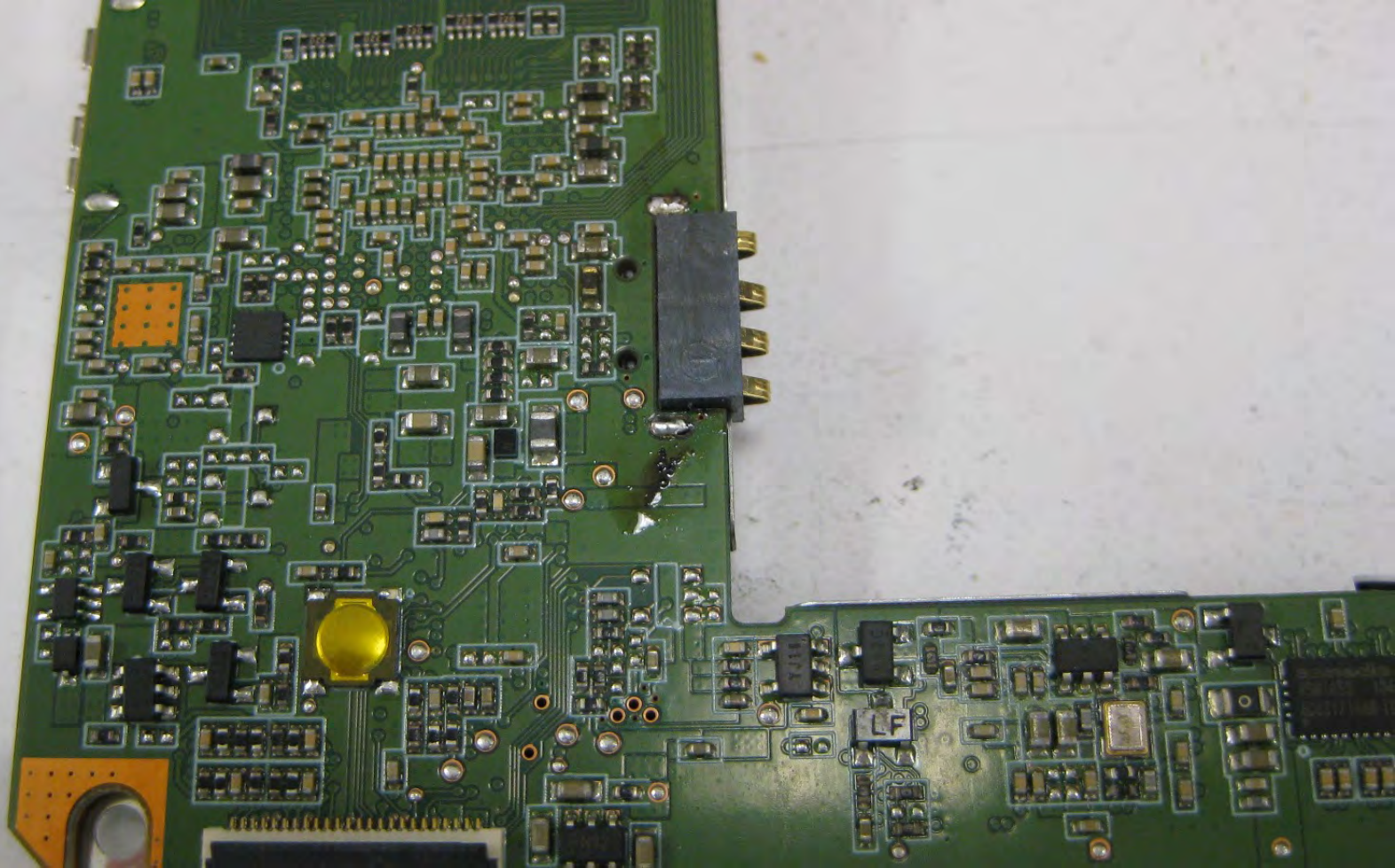
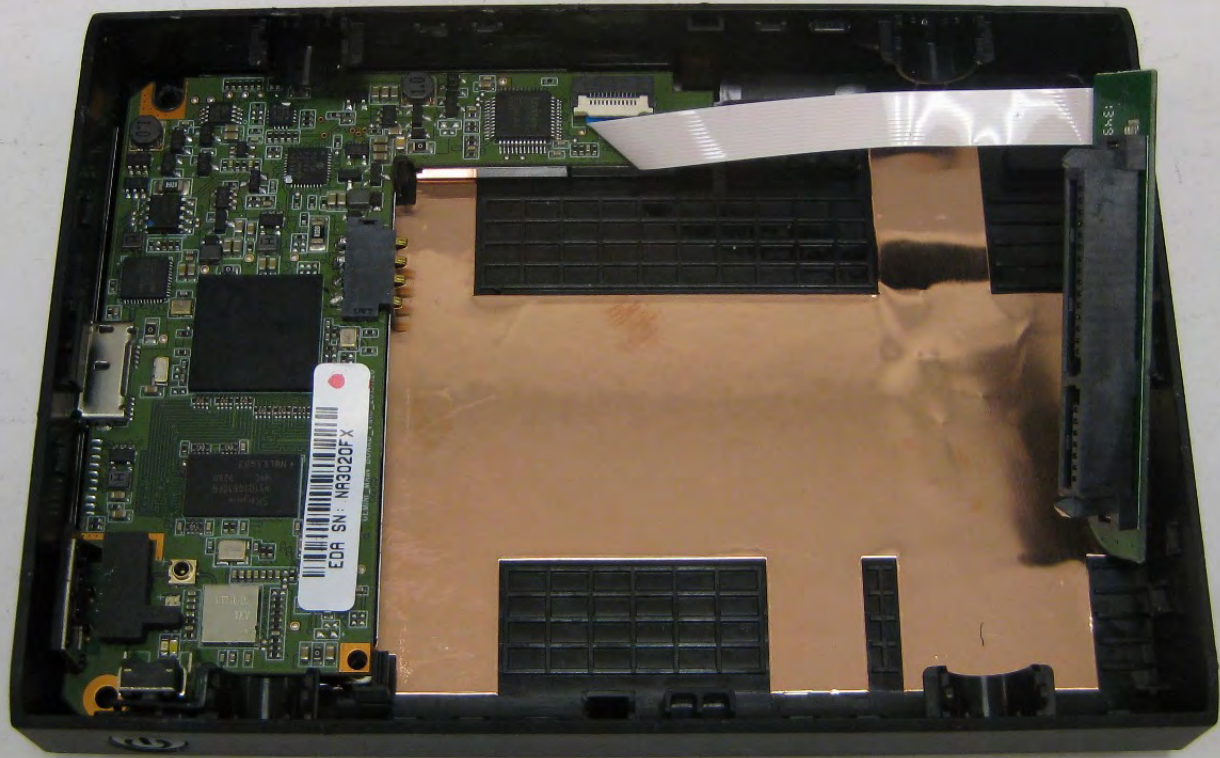
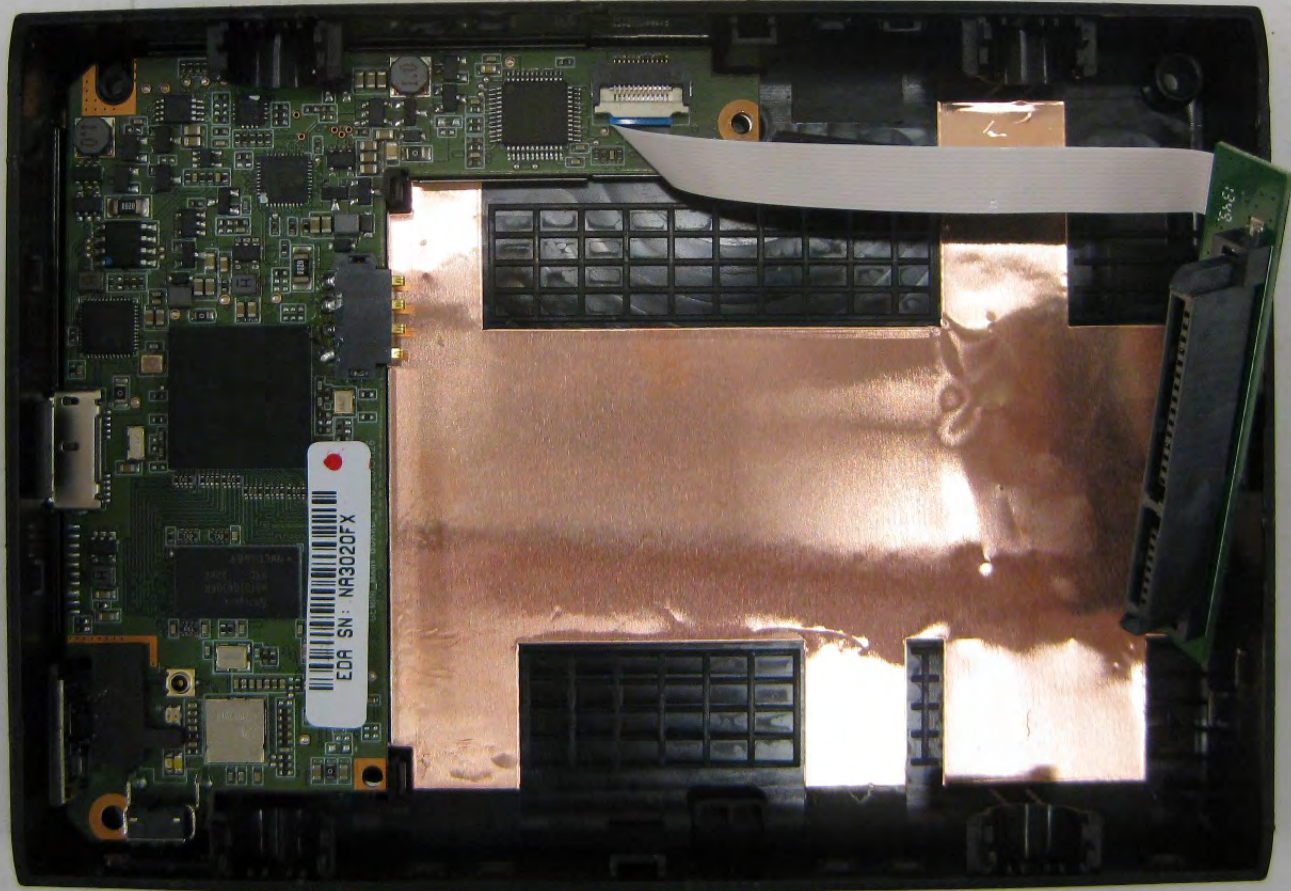


TOSHIBA OW6189
TAMAW 13249A E
58NVG1S3HTA00





EDR SN: NR3020FX



EDA SN: NR3020FX

SKhynix
H5102G63DFR
H9C 326V
WML25683

NA3020FX

Z07

002020FX

132882
PIC16
F-1768

9175
M17M
102M

FZCE

1.0

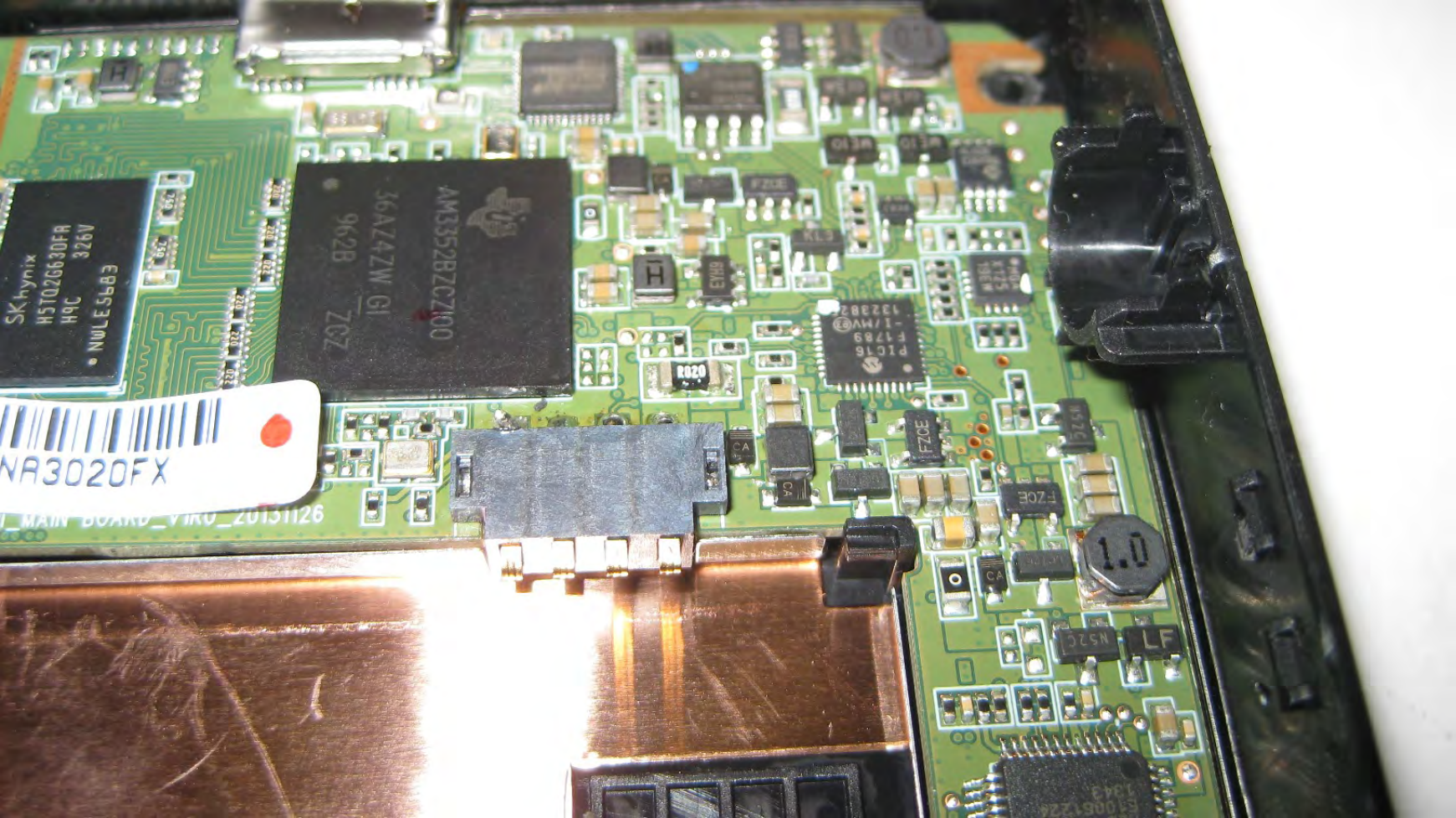
SKhynix
H5T02G630FR
H9C 326V
• N9LE5983

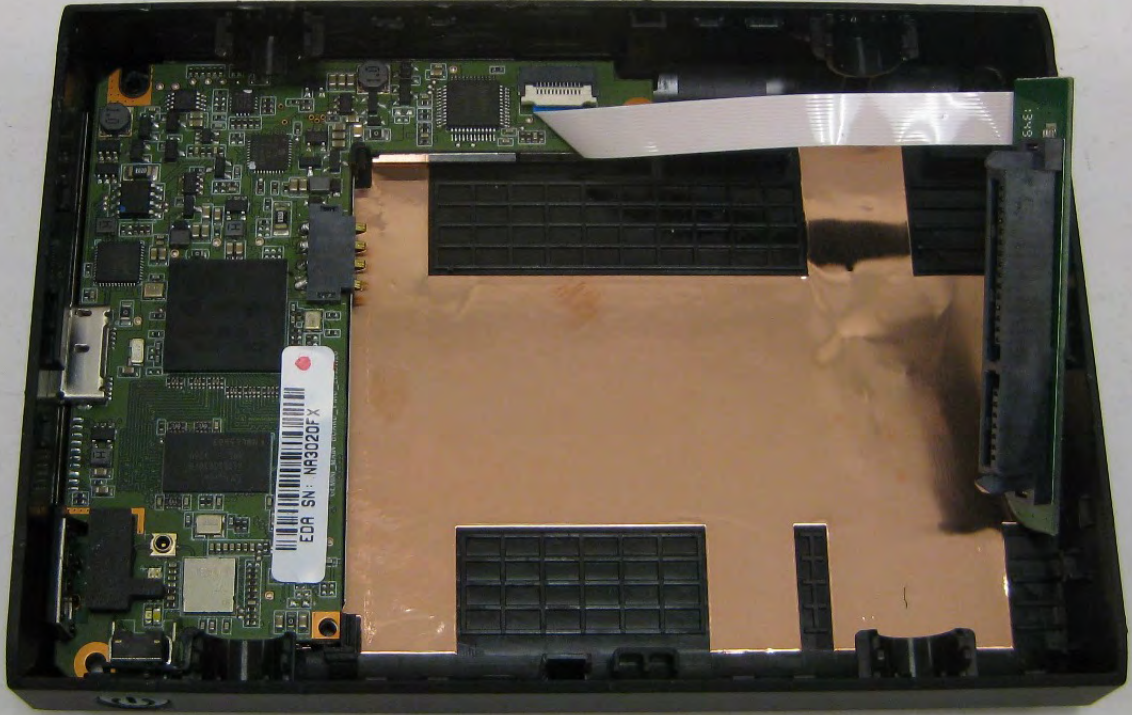
AM3552BZCZ100
36A74ZW GI
962B ZGZ

PLC16
-1/MV
1328B2

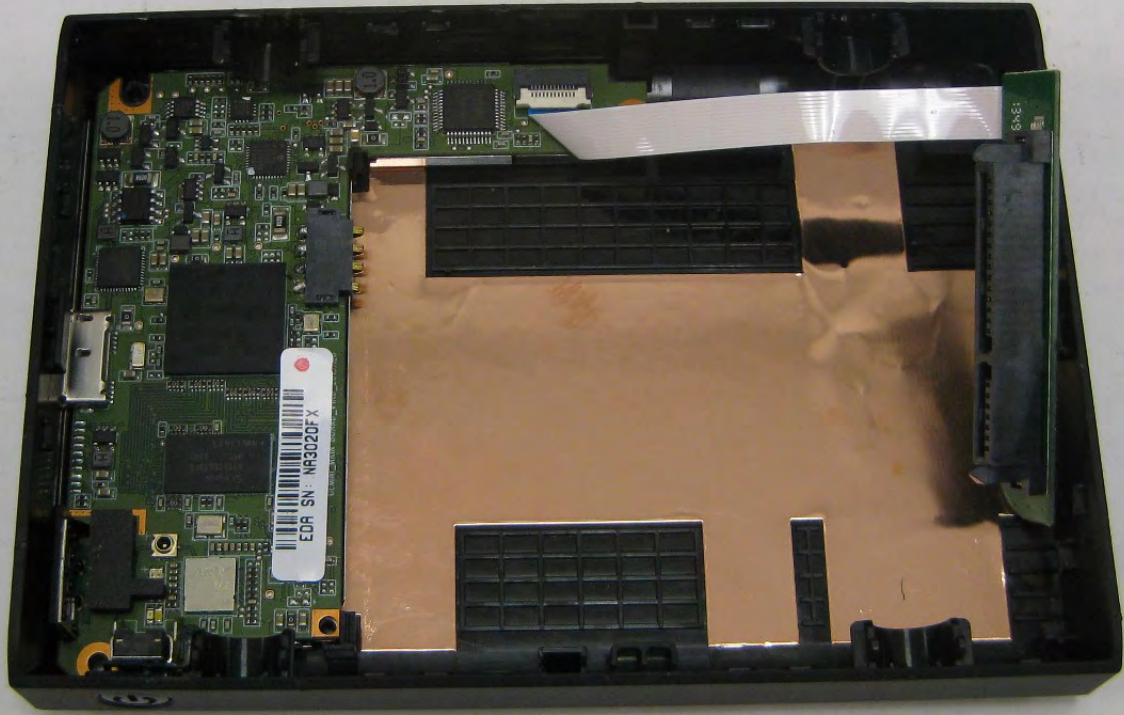
NR3020FX

MAIN BOARD_VIKO_20131126





EPA SN: NR30207 X



EDR SN: NR3020FX

P/N : E0373-G14A-B15U6



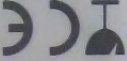
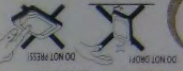
DO NOT COVER THIS SIDE

European Regulatory Address:
Seagate Technology Int'l
Koolhovenlaan 1,
1119 NB Schiphol-Rijk,
The Netherlands



HDD Mfg by Seagate Technology LLC
DOM: 11/2013
Site: DGT
Product of CHINA

Momentus-B
KCC-REM-STX-
20



WARNING: SENSITIVE PARTS INSIDE. FAILURE MAY OCCUR IF SUBJECT TO EXCESSIVE SHOCK, TOUCHING THE CIRCUITRY MAY CAUSE DAMAGE. REMOVING THIS COVER WILL VOID ANY AND ALL WARRANTIES.

HARD DISK DRIVE RATED: DC+5V --- 0.85A Seagate Technology LLC

WARRANTY VOID IF REMOVED

REV. A
FW : 2AR20003



SAMSUNG SPINPOINT



Model : ST1000LM024
HDD P/N : HN-M101MBB/SBZ
LBA 1,953,525,168 1000.0GB

S/N: S2YFJ9BDB01912



<http://www.seagate.com>