

EUT Photo(s)

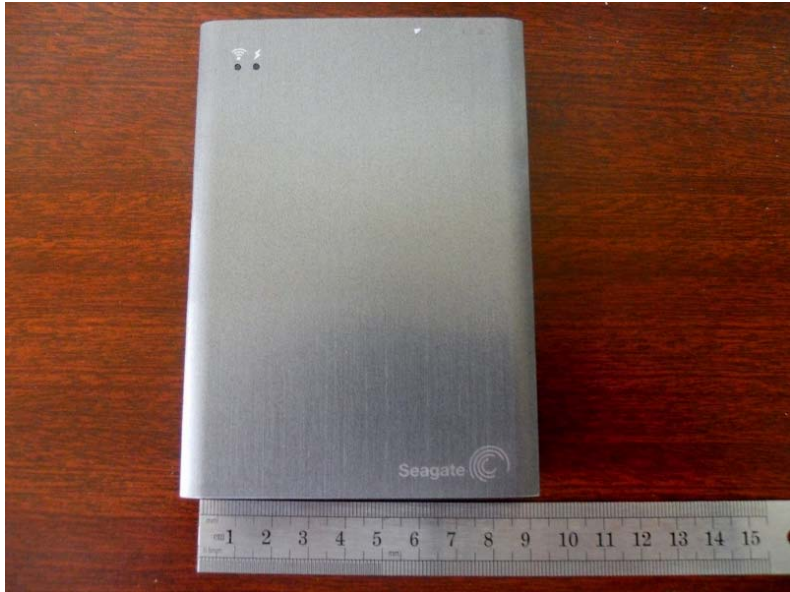
Photo 1	EUT Photo – Top View	
		
Supplemental Information:		


Photo 2	EUT Photo – Bottom View	
		
Supplemental Information:		

Photo 3

EUT Photo – External Power Supply



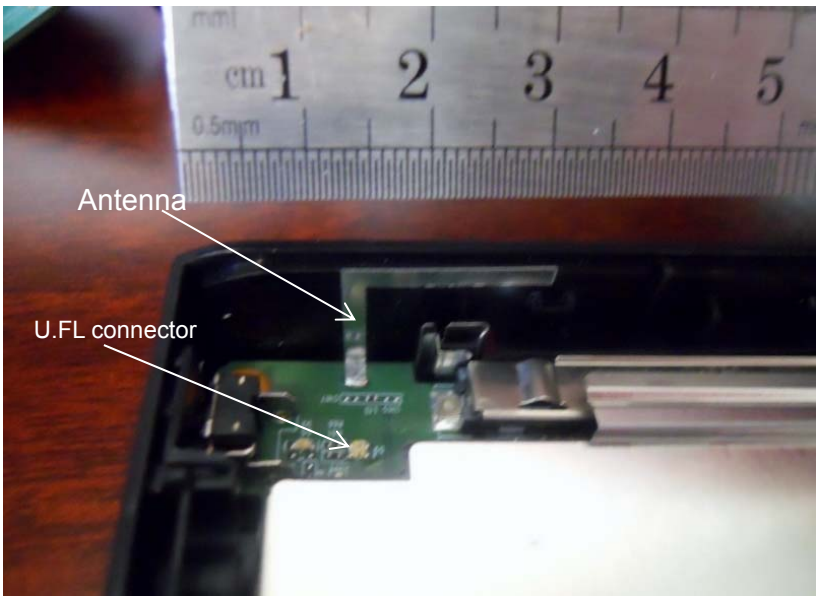
Supplemental Information:

Photo 4 EUT Photo – AC Inlet & Label OR External Power Supply



Supplemental Information:

Photo 4 EUT Photo – Antenna



Supplemental Information:

Table No. 1	Antenna requirement	Verdict
		P
Type of antenna connection.....:	<input checked="" type="checkbox"/> Integral antenna <input type="checkbox"/> Permanently attached <input type="checkbox"/> Unique connector	
Type of unique connector.....:	A U.FL test connector is on the PWB and is used for testing. The antenna is disconnected when a test probe is inserted.	
Method of permanent connection..:	The antenna is soldered to the PWB.	
Antenna gain.....:	4.75 dBi	



Supplemental Information:

Tested by (+ signature)

David Light

