

Ilium S106

User Manual

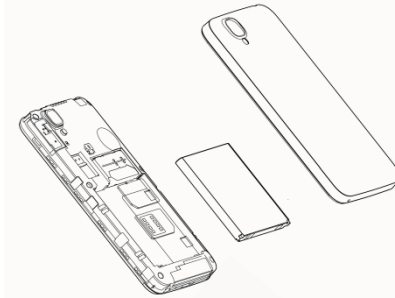
Content

Get Started	2
Insert SIM card.....	2
Charge the Battery or Connect to a Computer	2
Keys and Parts	3
Lock and Unlock the Screen	5
Make it yours	6
Add Widgets and more icons to Home Screen	7
Add widgets and icons to home screen.....	7
Rearrange or remove widgets and icons on your Home screen	7
Enter Launcher	8
Open and Switch Applications.....	8
Switch to Recently Used Application	9
Make a Call	10
Call Log	11
Reject a Call by Sending a Busy Message	12
Add a Contact	12
Send and Receive Message(s)	13
Browse the Web	15
Enjoy Music	16
Download Applications From Android Market	17
Manage Applications/ Move to SD card	18
System Settings	19
Wireless & Network	19
Device	20
Personal	21
System	21
Maintenance & Safety	23

Get Started

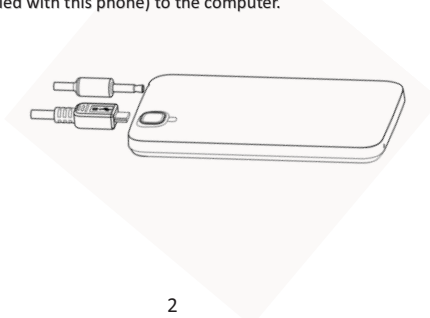
Insert SIM card

1. Switch off the mobile phone.
2. Insert the SIM card correctly in the card slot (See figure below).



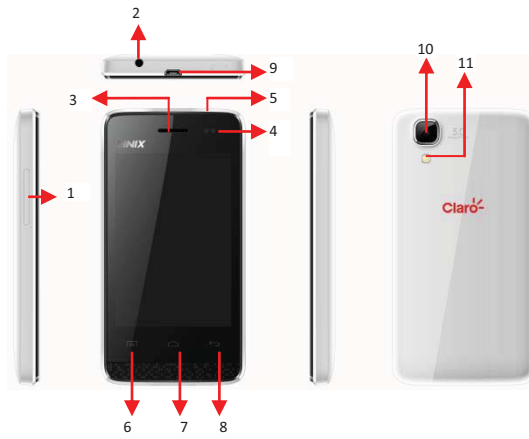
Charge the Battery or Connect to a Computer

You can charge your battery using the charger or connect the USB cable (supplied with this phone) to the computer.



Keys and Parts

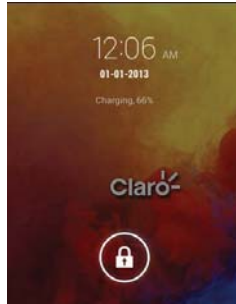
The smart phone gives you marvelous feelings to experience on Camera, Video recorder, FM radio, Music and Sound recorder. Let you install various APPs, games, and more (supports APK format) by downloading from Android Market.



1.Volume Up/Down Key	To adjust the ringer volume, adjust the voice volume during a call and adjust media volume.
2.Headset port	To connect an earphone so you can listen to music or radio, etc.
3.Receiver	To hear the voice of the other side when calling.
4.Front Camera	Allow you to take pictures while facing the screen.
5.Power Key	Switch the phone on or off. Press and hold to open phone options menu.
6.Menu Key	To open home screen and the extended screens. A shortcut way to arrange Wallpaper and Widgets, and enter Settings.
7.Home Key	Go to home screen; Press and hold to open a window showing you most recently used applications.
8.Back Key	Go back to the previous screen; Close the on-screen keypad, a dialog box, an options menu, or the notification panel.
9.USB jack	To connect charger or USB data cable for data exchange.
10.Back Camera lens	For taking photos.
11.Flashlight	To take photos in low-light conditions.

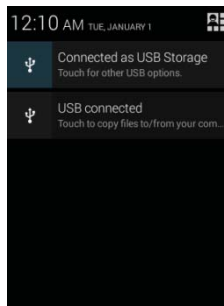
Lock and Unlock the Screen

Press power button to enter Sleep mode and meanwhile the screen will be locked; press power button again to wake up and then drag the lock icon to upside to unlock.



Make it yours

- 1) Home screen: It is your starting point to access all the features on your phone. It displays application icons, widgets, shortcuts, and other features.
- 2) Notification Bar: At the top of the screen, the Status bar displays the time, status, and notifications. If there is a new message, missed call or something in the notification bar, you can drag it down to open notification panel and click the desired one to have a view. When you finished, you can close it by dragging the panel up or pressing "Back".
- 3) Launcher: Touch the Launcher icon at the bottom of the screen to view all installed applications.



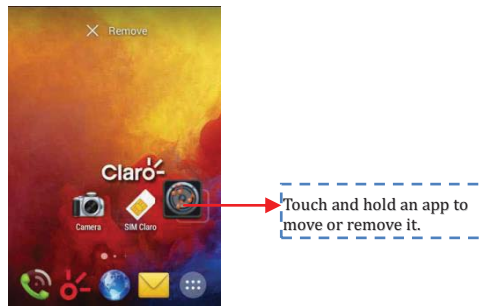
Add Widgets and more icons to Home Screen

Add widgets and icons to home screen

Enter Launcher and long press and hold an application till the app displays on the home screen, and then release your finger hold.

Rearrange or remove widgets and icons on your Home screen

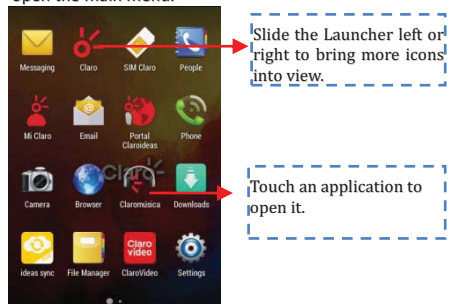
a). Long press and hold the widget or icon you want to move. Once "Remove" appears, don't release your hold on the icon and drag the widget or icon to a new location on the screen. b) . Press and hold on icon for several seconds, and drag the widgets or icon to remove!



Enter Launcher


Open and Switch Applications

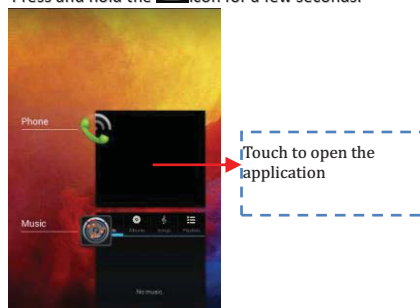
The Launcher holds icons for all of the applications on your phone, including any application that you downloaded from Android Market or other sources. On the Home screen, touch the Launcher Icon to open the main menu.




Press Home icon or Back icon to close the Launcher.

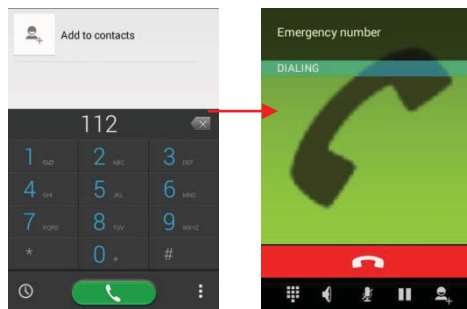
Switch to Recently Used Application

Press and hold the  icon for a few seconds.




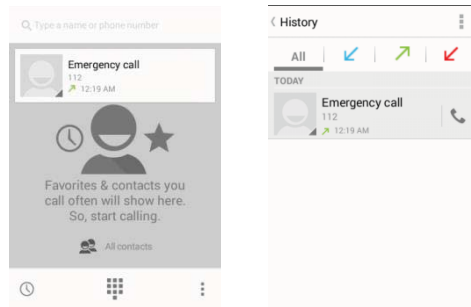
Make a Call

On the start screen choose  and enter a complete phone number to make a call.




Call Log

Enter Phone interface, tap the icon  in the left corner, and then access to Call log. In call log options, you can Make calls, add new contact and send message etc.





Reject a Call by Sending a Busy Message

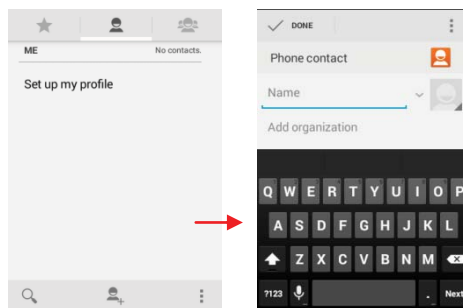
While there is an incoming call, you are inconvenient to accept the call, and then you can send a busy message for rejecting the call.

Drag the circle up to , some busy messages will show on the screen, short tap any of them to send out.

Add a Contact

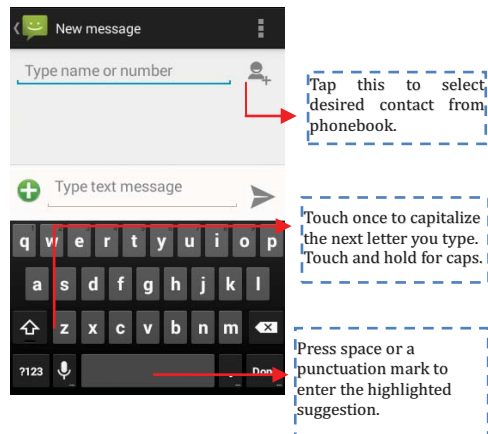
Tap  and enter Contacts and then add a contact (see figure below.)

Tap  to add a new contact to Phone or SIM card.

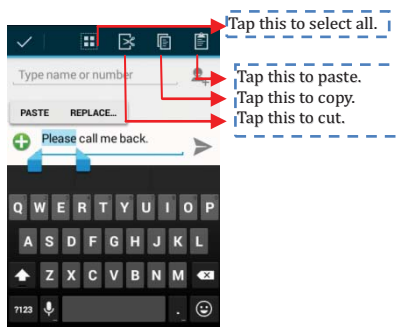


Send and Receive Message(s)

Enter **Messaging**, and then compose new message. You touch a text field where you want to enter text, to open the keyboard.



- a. When you are composing a new text message, you can select text for cutting or copying. The selected text is highlighted in blue. Touch the text field or portion that contains text. (see the below figure) You can select all contexts, copy, cut and paste.
- b. When a new message comes, you can read by dragging notification panel and click the message, or entering **Message** to read it directly.



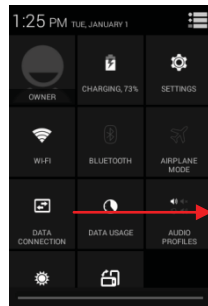
1. Tap one of the all message thread, you can delete the message thread.
2. Touch and hold a message in a message conversation window.



3. Touch **Forward** in the menu that opens.
4. Add a contact.
5. Touch Send icon to send the message.

Browse the Web

Switch on Data connection or WiFi

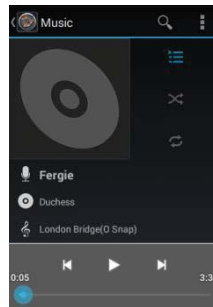


Touch it to switch on or off Data connection

Tips: To browse the web, you need switch on Data connection.
If there is WiFi around, you can switch on WiFi to use it browse the web.
Some may need password.

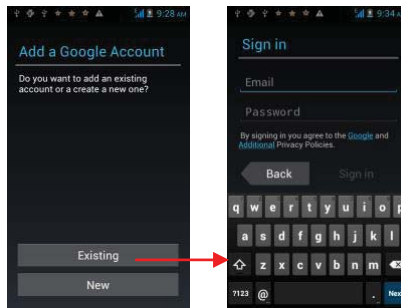
Enjoy Music

When you copy music to your Micro SD card, the Music player searches the device for music files and builds a catalog of your music, based on information about each file that is stored in the file itself.

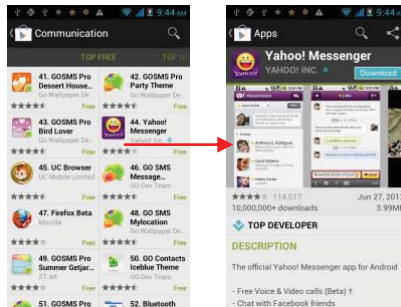


Download Applications From Android Market

a. Add a Google account



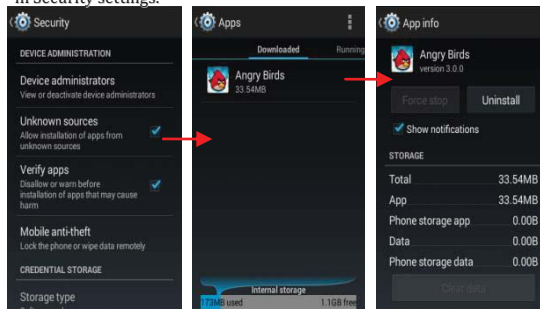
b. Enter Android Market (Play Store) and download apps.



Manage Applications/ Move to SD card

Enter Setting > Apps, then manage the applications.

As you install downloaded Apps, you need switch on "Unknown sources" in Security settings.



System Settings

Wireless & Network

You can customize wireless & network settings here, including:

1. Wi-Fi

Turn on or turn off Wi-Fi here. Set up and manage wireless access points here.

2. Bluetooth

Turn on or turn off Bluetooth here. Scan for devices and then it will show the scanned devices. Choose a device to pair and then you can send or receive information via Bluetooth.

3. Data usage

4. More...

◆ Airplane mode

◆ VPN

Tap Add VPN and then choose one of the following:

- 1) Add PPTP VPN (Point-to-point Tunneling Protocol)
- 2) Add L2TP VPN (Layer 2 Tunneling Protocol)
- 3) Add L2TP/IPSec PSK VPN (Pre-shared key based L2TP/IPSec VPN)
- 4) Add L2TP/IPSec CRT VPN (Certificate based L2TP/IPSec VPN)

And then set VPN name, VPN server, Enable encryption, DNS search domains to finish it. Press Menu, then tap Save to confirm or tap cancel.

◆ Tethering & portable hotspot

Share your phone's mobile data connection via USB or as a portable

Wi-Fi hotspot.

◆ Mobile networks

Set options for roaming, networks, APNs here.

1) Data roaming checkbox: Connect or disconnect to data services when roaming.

2) Network Mode: Choose preferred network mode from GSM/WCDMA auto, WCDMA only, or GSM only.

3) GSM/UMTS Options: Set Access Point Names, Use only 2G networks checkbox, and Network operators here.

Device

1. Audio profiles

◆ General

Personalize your call ringtone, notification sounds, Dial pad touch tones, Touch sounds, etc.

◆ Silent

Silent only

◆ Meeting

Vibrate only

◆ Outdoor

Loudest ring and vibrate

2. Display

You can define your wallpaper and set auto rotate screen, brightness, font size, sleep, etc.

3. Storage

You can check out the space of your phone or SD card here.

4. Battery

You can see the use of the battery.

5. Apps

You can manage installed application here.

Personal

1. Location

Let apps use Google location service to estimate your location faster.

Anonymous location data will be collected and sent to Google.

2. Security

◆ Screen lock

◆ Owner information

◆ SIM card lock

◆ Passwords

◆ Device administration

3. Language & input

Select language and input method.

4. Backup and reset

◆ Backup my data: Backup app data, Wifi passwords, and other settings to Google services.

◆ Factory data reset: Erases all data on phone.

System

1. Date & time

2. Schedule power on/off
3. Accessibility
4. Printing
5. About phone

Maintenance & Safety

Please read and observe the following information for safe and proper use of your phone and to prevent damage. Also, keep the user guide in an accessible place at all the times after reading it.

1. After sales service

Kindly refer to the Warranty Card provided in the sales package box.

2. Charger and Adapter Safety

Charger and adapter are designed for indoor use only.

3. Battery Information and Care

- Please do not disassemble the rear cover of the mobile phone, since the battery is inbuilt.
- Recharge the battery after long periods of non-use to maximize battery life.
- Battery life will vary due to usage patterns and environmental conditions.
- The self-protection function of the battery cuts the power of the phone when its operation is in an abnormal status. In this case, remove the battery from the phone, reinsert it, and turn the phone on.

4. General Notice

- Do not place items containing magnetic components such as a credit card, phone card, bank book, or subway ticket near your phone. The magnetism of the phone may damage the data stored in the magnetic strip.
- Talking on your phone for long period of time may reduce call quality due to heat generated during use.
- When the phone is not used for a long period time, store it in a safe place with the power cord unplugged.
- Using the phone in proximity to receiving equipment (i.e. TV or Radio) may cause interference to the phone.
- Do not immerse your phone in water. If this happens, remove the battery and take it to an Authorized Service Center.
- Do not paint your phone.
- The data saved in your phone might be deleted due to careless

use, repair of the phone, or upgrade of the software. Please backup your important phone numbers. (Ring tones, text messages, voice messages, picture, and videos could also be deleted.) The manufacturer is not liable for damage due to the loss of data.

- Do not turn your phone on or off when the phone is close to your ear.
- The suitable temperature for the phone and accessories is -10°C ~45°C.
- When charging, please place the phone in an environment that has a normal room temperature and good ventilation. It is recommended to charge the phone in an environment with a temperature under 40°C. Please ensure to use only the charger offered by the manufacturer. Using unauthorized charger may cause danger and violate the authorization of the phone and the guarantee article.
- Dispose of used batteries according to the instructions.
- Excessive sound pressure from earphones and headphones can cause hearing loss.

Warning: Company will not bear any responsibility for any incompliance with the above guidelines or improper use of the mobile phone. Our company keeps the right to make modifications to any of the content here in this user guide without public announcement in advance. The content of this manual may vary from the actual content displayed in the device. In such case, the latter shall govern.

FCC Regulations

This mobile phone complies with part 15 of the FCC Rules. Operation is subject to the following two conditions: (1) This device may not cause harmful interference, and (2) this device must accept any interference received, including interference that may cause undesired operation.

This mobile phone has been tested and found to comply with the limits for a Class B digital device, pursuant to Part 15 of the FCC Rules. These limits are designed to provide reasonable protection against harmful interference in a residential installation. This equipment generates, uses and can radiated radio frequency energy and, if not installed and used in accordance with the instructions, may cause harmful interference to radio communications. However, there is no guarantee that interference will not occur in a particular installation. If this equipment does cause harmful interference to radio or television reception, which can be determined by turning the equipment off and on, the user is encouraged to try to correct the interference by one or more of the following measures:

- Reorient or relocate the receiving antenna.
- Increase the separation between the equipment and receiver.
- Connect the equipment into an outlet on a circuit different from that to which the receiver is connected.
- Consult the dealer or an experienced radio/TV technician for help.

FCC Note:

Caution: Changes or modifications not expressly approved by the party responsible for compliance could void the user's authority to operate the equipment.

RF Exposure Information (SAR)

This phone is designed and manufactured not to exceed the emission limits for exposure to radio frequency (RF) energy set by the Federal Communications Commission of the United States.

During SAR testing, this device was set to transmit at its highest certified power level in all tested frequency bands, and placed in positions that simulate RF exposure in usage against the head with no separation, and near the body with the separation of 10 mm. Although the SAR is determined at the highest certified power level, the actual SAR level of the device while operating can be well below the maximum value. This is because the phone is designed to operate at multiple power levels so as to use only the power required to reach the network. In general, the closer you are to a wireless base station antenna, the lower the power output.

The exposure standard for wireless devices employing a unit of measurement is known as the Specific Absorption Rate, or SAR.

The SAR limit set by the FCC is 1.6W/kg.

This device is complied with SAR for general population /uncontrolled exposure limits in ANSI/IEEE C95.1-1992 and had been tested in accordance with the measurement methods and procedures specified in IEEE1528. This device has been tested and meets the FCC RF exposure guidelines when tested with the device directly contacted to the body.

The FCC has granted an Equipment Authorization for this model phone with all reported SAR levels evaluated as in compliance with the FCC RF exposure guidelines. SAR information on this model phone is on file with the FCC and can be found under the Display Grant section of www.fcc.gov/oet/ea/fccid after searching on FCC ID: ZC4S106.

For this device, the highest reported SAR value for usage against the head is 0.93 W/kg, for usage near the body is 1.16 W/kg.

While there may be differences between the SAR levels of various phones and at various positions, they all meet the government requirements.

SAR compliance for body-worn operation is based on a separation distance of 10 mm between the unit and the human body. Carry this device at least 10 mm away from your body to ensure RF exposure level

compliant or lower to the reported level. To support body-worn operation, choose the belt clips or holsters, which do not contain metallic components, to maintain a separation of 10 mm between this device and your body.
RF exposure compliance with any body-worn accessory, which contains metal, was not tested and certified, and use such body-worn accessory should be avoided.