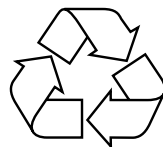

300M Wireless-N USB Adaptor
User Manual

REV: V1.0



RECYCLABLE

Certification
FCC CE

FCC Statement

This equipment has been tested and found to comply with the limits for a Class B digital device, pursuant to part 15 of the FCC rules. These limits are designed to provide reasonable protection against harmful interference in a residential installation. This equipment generates, uses and can radiate radio frequency energy and, if not installed and used in accordance with the instructions, may cause harmful interference to radio communications. However, there is no guarantee that interference will not occur in a particular installation. If this equipment does cause harmful interference to radio or television reception, which can be determined by turning the equipment off and on, the user is encouraged to try to correct the interference by one or more of the following measures:

- Reorient or relocate the receiving antenna.
- Increase the separation between the equipment and receiver.
- Connect the equipment into an outlet on a circuit different from that to which the receiver is connected.
- Consult the dealer or an experienced radio/TV technician for help.

To assure continued compliance, any changes or modifications not expressly approved by the party responsible for compliance could void the user's authority to operate this equipment. (Example- use only shielded interface cables when connecting to computer or peripheral devices)

FCC Radiation Exposure Statement

This equipment complies with FCC RF radiation exposure limits set forth for an uncontrolled environment. This transmitter must not be co-located or operating in conjunction with any other antenna or transmitter.

This equipment complies with Part 15 of the FCC Rules. Operation is subject to the following two conditions:

- (1) This device may not cause harmful interference, and
- (2) This device must accept any interference received, including interference that may cause undesired operation.

Caution!

The manufacturer is not responsible for any radio or TV interference caused by unauthorized modifications to this equipment. Such modifications could void the user authority to operate the equipment.

Package Contents

The following items should be found in your package:

- ▶ 300M USB Wireless Adapter
- ▶ Quick Installation Guide
- ▶ CD-Rom

Make sure that the package contains above items. If any of the above items is missing or damaged, please contact the store you bought this product from.

FCC ID: ZBXMTO-WN820NM

1. Antennas must be installed to provide 20 cm separation distance from the transmitting antenna to the body of user during normal operating condition. This device must not be co-located or operating in conjunction with any other antenna or transmitter.
2. Only those antennas filed under FCC ID:ZBXMTO-WN820NM can be used with this device.
3. When the Minicard is installed in a system where the antenna location is less than 20 cm separation distance to the body of the user, additional equipment authorization is required.
4. The regulatory label on the final system must include the statement: “Contains FCC ID:ZBXMTO-WN820NM”.
5. The final system integrator must ensure there is no instruction provided in the user manual or customer documentation indicating how to install or remove the transmitter module.
6. ZBXMTO-WN820NM must be installed and used in strict accordance with the manufacturer’s instructions as described in the user documentation that comes with the product. This device complies with the following radio frequency and safety standards.

IMPORTANT NOTE:

FCC Radiation Exposure Statement: This equipment complies with FCC radiation exposure limits set forth for an uncontrolled environment. This equipment should be installed and operated with minimum distance 20cm between the radiator & your body.

This transmitter must not be co-located or operating in conjunction with any other antenna or transmitter. Operations in the 5.15-5.25GHz band are restricted to indoor usage only

IMPORTANT NOTE: In the event that these conditions can not be met (for example certain laptop configurations or co-location with another transmitter), then the FCC authorization is no longer considered valid and the FCC ID can not be used on the final product. In these circumstances, the OEM integrator will be responsible for re-evaluating the end product (including the transmitter) and obtaining a separate FCC authorization.

End Product Labeling This transmitter module is authorized only for use in device where the antenna may be installed such that 20 cm may be maintained between the antenna and users. The final end product must be labeled in a visible area with the following: "Contains FCC ID:ZBXMTO-WN820NM".

Manual Information To the End User

The OEM integrator has to be aware not to provide information to the end user regarding how to install or remove this RF module in the user's manual of the end product which integrates this module. The end user manual shall include all required regulatory information/warning as show in this manual.

The user' s manual for OEM Integrators must include the following information in a prominent location "IMPORTANT NOTE: To comply with FCC RF exposure compliance requirements. The antenna must not be co-located or operating in conjunction with any other antenna or transmitter.

Caution:

The device for the band 5150-5250 MHz is only for indoor usage to reduce potential for harmful interference to co-channel mobile satellite systems. Because high power radars are allocated as primary users (meaning they have priority) in 5250-5350 MHz and 5650-5850 MHz, these radars could cause interference and/or damage to license exempt LAN devices.

1. Introduction

1.1. Product Overview

This USB Wireless adapter is a powerful USB 2.0 Adapter that installs quickly and easily with host devices. Possible usage is within WLAN Access Point, Bridge, Router, Repeater for host devices .

The adapter connects with 802.11n networks at up to 300Mbps, and is backwards compatible with 54Mbps 802.11g or 11Mbps 802.11b devices. In every mode, your wireless connection can be protected so your data stays secure.

1.2. Main Features

- ▶ Supports 300Mbps transmission rates
- ▶ Complies with IEEE 802.11b, 802.11g and 802.11n standards for 2.4GHz Wireless LAN
- ▶ USB 2.0
- ▶ Meets 64/128-bit WEP, WPA, and WPA2 security standards
- ▶ Compatible with Windows 2000/XP/Vista/7
- ▶ Low power consumption
- ▶ Easy to install and configure
- ▶ WPS enabled

1.3. Standards

- ▶ 802.11b/g/n
- ▶ 802.11a

1.4. Working Environment

Temperature:

- ▶ 0° to 40° C (operating)
- ▶ -20° to 70° C (storage)

Humidity:

- ▶ 10% to 90 % non-condensing (operating)
- ▶ 5% to 95% non-condensing (storage)

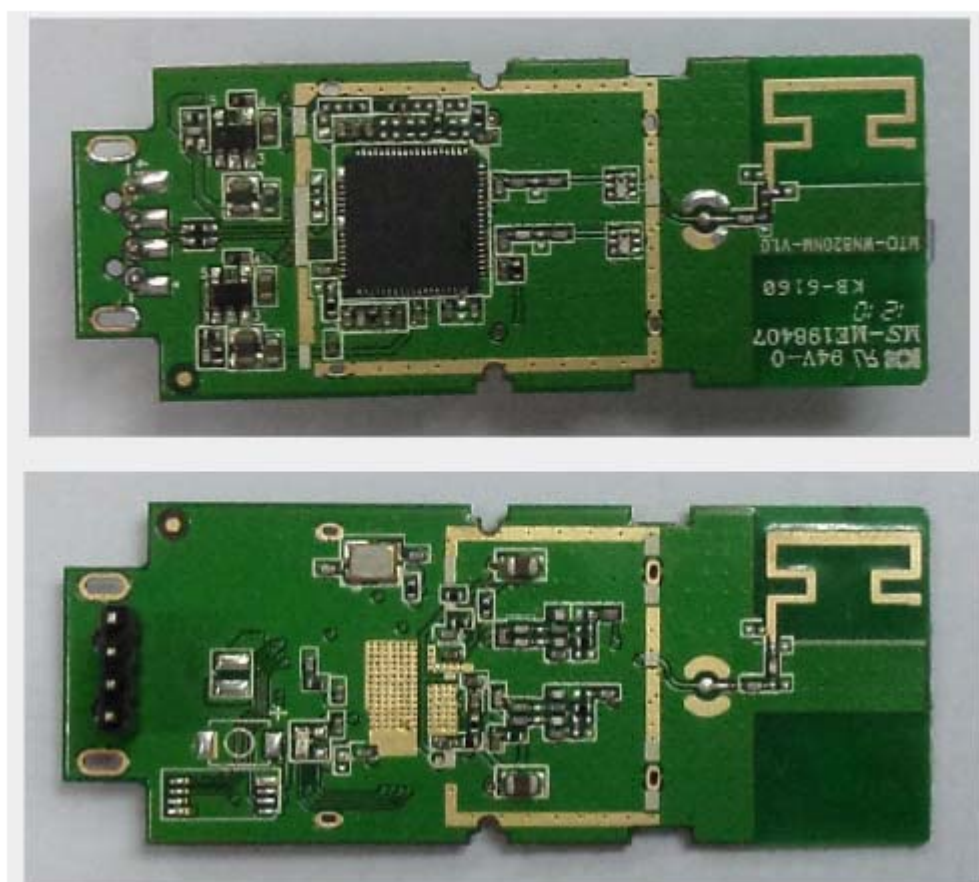
1.5. System Requirements

- ▶ 300 MHz processor and 32 MB of memory
- ▶ CD-ROM drive
- ▶ Microsoft® Windows® 7, Vista™, XP, 2000 SP4

2. Hardware and Driver Installation

2.1. Insert the host devices

This USB Wireless adapter is a powerful USB 2.0 Adapter that installs quickly and easily with host devices. Possible usage is within WLAN Access Point, Bridge, Router, Repeater for host devices .



2.2 Module product features:

- provide USB 2 interface;
- support 20MHz/40MHz bandwidth;
- compliance with the protocol of IEEE802.11a, compatible with IEEE802.11n and IEEE802.11b / g standard;
- automatically detect network and transmission rate

Supports 64/128 WEP data encryption; support WPA/WPA2/TKIP/AES encryption mode;

- 2T2R antenna for dual-frequency mode

Support 2.4G and 5G dual band

- support Multiple BSSID

Supports QoS-WMM, WMM-PS

- WPS: PIN, PBC

- support Cisco CCX

- low power and power management

- support operating system: Windows XP 32/64, 2000, Vista 32/64, Windows 7 32/64, Linux, Macintosh

2.3 Module USB PIN pin definition

1	GND
2	D+
3	D-
4	VCC(5V)

