

MTO-WA718N-A1 Wireless AP

Quick Installation Guide

UnRegistered

VER : 1.0

Federal Communications Commission (FCC) Statement

This device complies with part 15 of the FCC Rules. Operation is subject to the following two conditions: (1) This device may not cause harmful interference, and (2) this device must accept any interference received, including interference that may cause undesired operation.

This device should be installed and operated with a minimum distance of 20 cm between the antenna and all persons.

Note: This equipment has been tested and found to comply with the limits for a Class B digital device, pursuant to part 15 of the FCC Rules. These limits are designed to provide reasonable protection against harmful interference in a residential installation. This equipment generates, uses and can radiate radio frequency energy and, if not installed and used in accordance with the instructions, may cause harmful interference to radio communications. However, there is no guarantee that interference will not occur in a particular installation. If this equipment does cause harmful interference to radio or television reception, which can be determined by turning the equipment off and on, the user is encouraged to try to correct the interference by one or more of the following measures:

- Reorient or relocate the receiving antenna.
- Increase the separation between the equipment and receiver.
- Connect the equipment into an outlet on a circuit different from that to which the receiver is connected.
- Consult the dealer or an experienced radio/TV technician for help.

Warning: Changes or modifications made to this device not expressly approved by SHENZHEN MTN ELECTRONICS CO., LTD. may void the FCC authorization to operate this device.

Note: The manufacturer is not responsible for any radio or tv interference caused by unauthorized modifications to this equipment. Such modifications could void the user's authority to operate the equipment.

Label requirements:

Contains 802.11bgn Module FCC ID: ZBXMTO-WA718N-A1.

1. Hardware connections:

Matching the power adapter into MTO-WA718N-A1 the power outlet, computers can be connected through a network cable or wireless device.



After the connection is complete, Check that the LED is correctly:

LED	LED State	Description
POWER	Light	Power status normal
SYS	Light	Start when the system power-on light
LAN	Light	Wired network connectivity
WLAN	Light	Wireless network boot
WPS	Light	One-click encryption started

If the LED is not lit or not properly, check that the connection is correct.

Warning :

1. Thunderstorm weather power the device and all of the lines removed, so as not to suffer from lightning damage;
2. Away from sources of heat, maintain ventilation;
3. In storage, in transport and environment, please pay attention to the waterproofing.

2. Application model

Wireless access point AP Mode

Will end the network cable to WTO-WA718N-A1 the network port, connected to a switch or router at the other end; WTO-WA718N-A1 as a complement to wired local area network, implementation of wired LAN wireless access.

As long as connected to the power supply, insert and attach the network cable, and then connect the computer wirelessly after simple settings WTO-WA718N-A1 to the Internet. WLAN green led is lit, data transfer and shining; POWER green led is lit; LAN green led is lit, data transfer and shining. AP and the computer's IP address and DNS address required under the front of the required settings for the wireless router address.

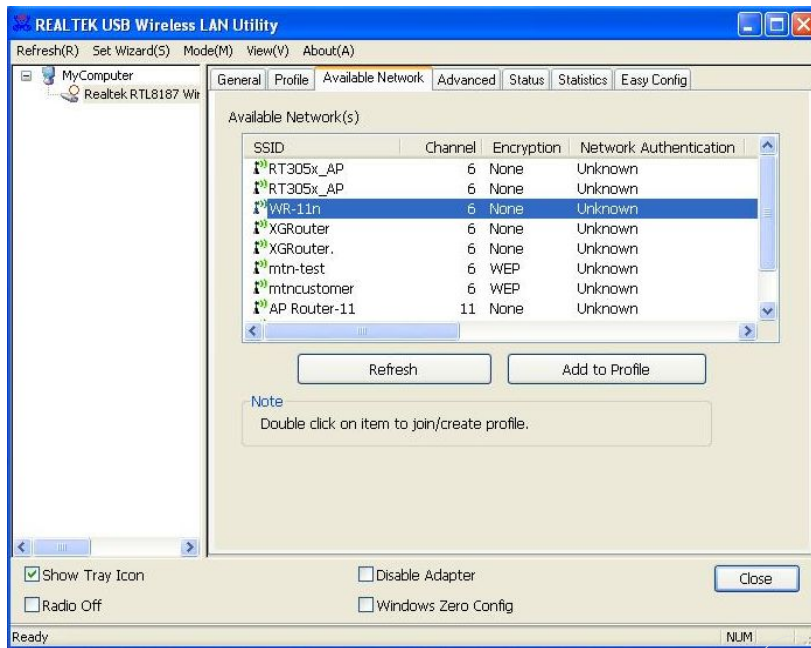
Application environment: applies to the temporary need for wireless devices to a wired network environment, such as bars, hotels, schools hostels.

3. PC Connection settings (in front of the set, make sure that your computers installed the wireless card)

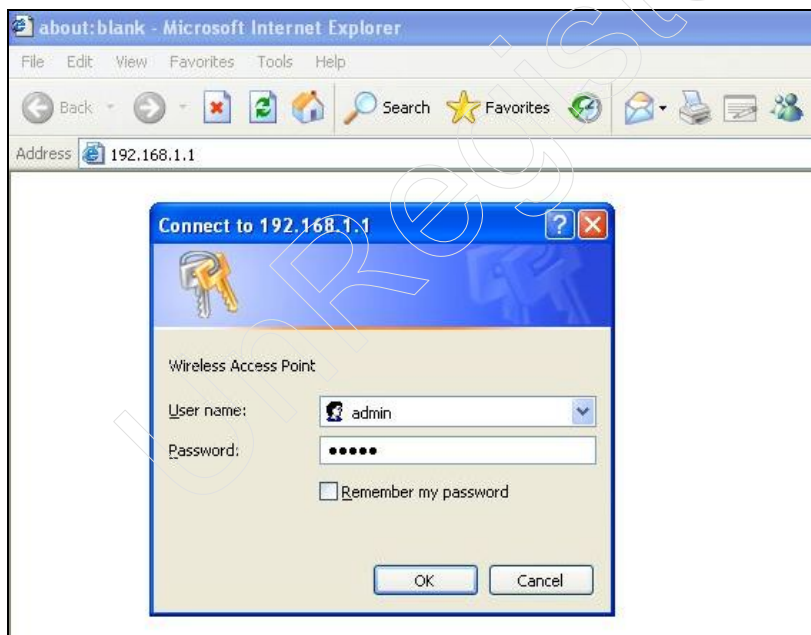
1) . WTO-WA718N-A1 connected to the power supply, network cable from the router associated, convert for wired network to a wireless network, is to front-end access to gateway 192.168.8.1 wired router (open this router DHCP function) connection settings, for example description :



2). Found in the wireless networks list name “WR-11n” AP device; Double-click follow the on-screen instructions to establish a connection;



3). Wireless connection after IE address bar enter AP initial address “**http://192.168.1.1**”, user name and password is “**Admin**”; Login WEB management interface , such as:



4). In the WEB management interface for LAN Interface set to corresponding to the front of the IP address “**192.168.8.254**”, and DHCP is set to “**Disabled**”, and click “**Apply Changes**”, restart later ;

LAN Interface Setup

This page is used to configure the parameters for local area network which connects to the LAN port of your Access Point. Here you may change the setting for IP address, subnet mask, DHCP, etc..

IP Address:
Subnet Mask:
Default Gateway:
DHCP:
DHCP Client Range: -
Static DHCP:
Domain Name:
802.1d Spanning Tree:
Clone MAC Address:

5). In the WEB management interface for Wireless Basic can change SSID “WR-11N”, change the channel, click on the “Apply Changes”, restart later ;

Wireless Basic Settings

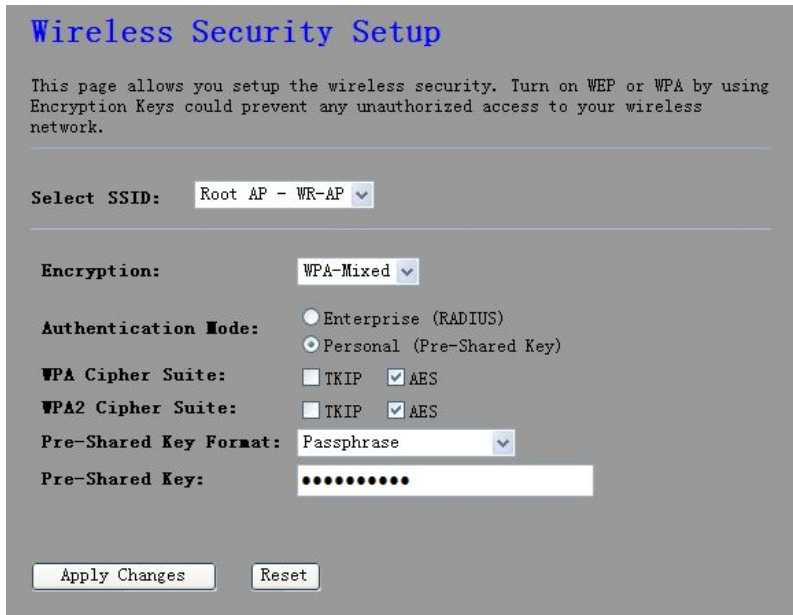
This page is used to configure the parameters for wireless LAN clients which may connect to your Access Point. Here you may change wireless encryption settings as well as wireless network parameters.


Disable Wireless LAN Interface

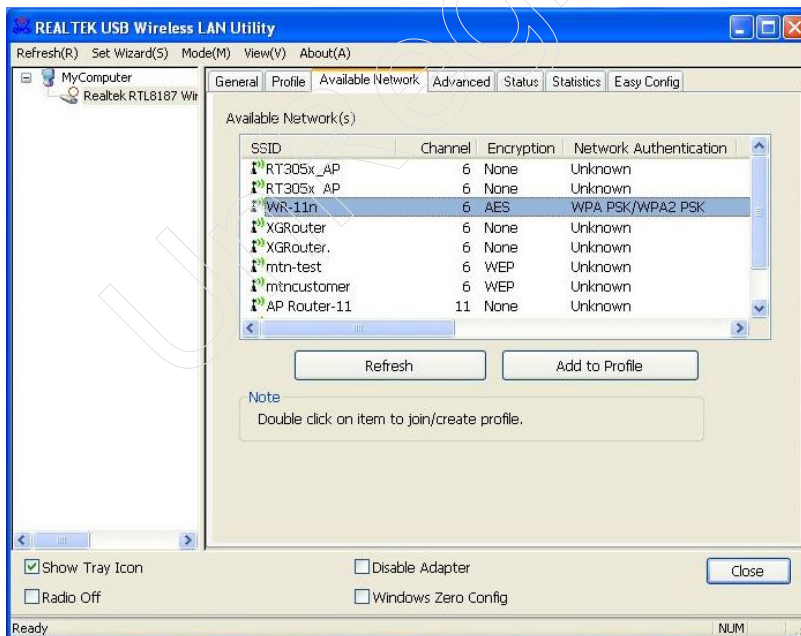
Band:
Mode:
Network Type:
SSID:
Channel Width:
Control Sideband:
Channel Number:
Broadcast SSID:
WMM:
Data Rate:
Associated Clients:

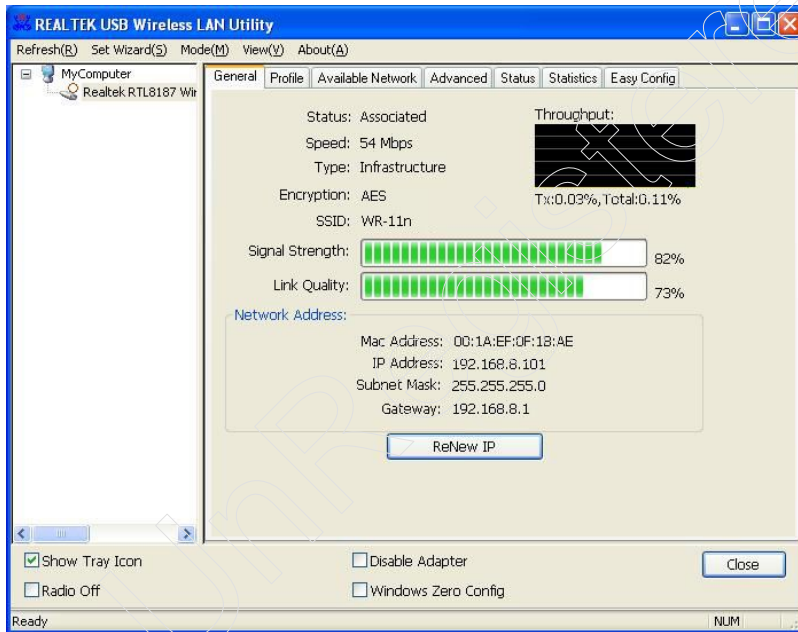
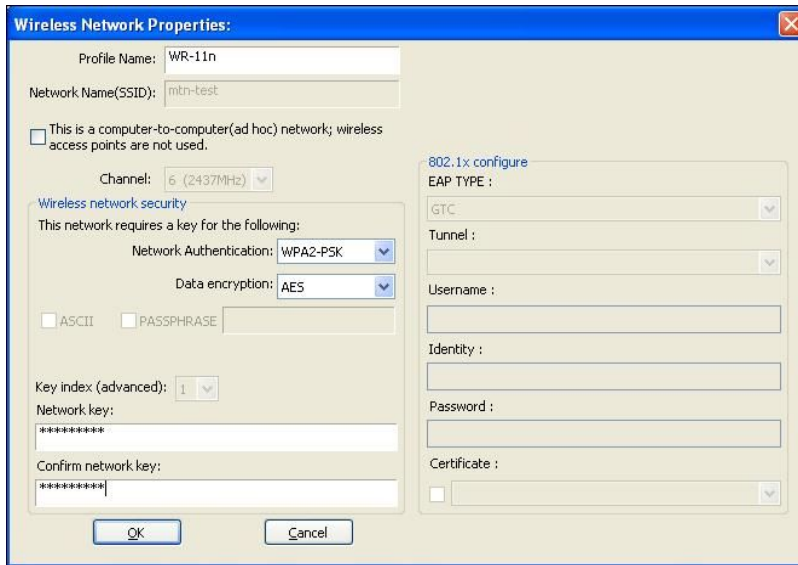
Enable Mac Clone (Single Ethernet Client)

6). In the WEB management interface for Wireless Security can be set and encrypted passwords, click “Apply Changes”, restart at a later time ;All electric start on again after you set the AP ;



7). Click the computer icon in the lower right corner of the wireless network,  open "wireless network connection" interface, refresh network list, found "WR-11n" has enabled security of wireless network, click "Add to Profile", in pop-up interface of "network key" within type new set of password, confirmed password, connection OK, you of personal security wireless network can using has.





Appendix—frequently asked questions:

1 、 Wireless signal under the influence of factors?

1) Family spaces are crowded, there is not enough space open, where walls are the most important obstacles in the room. As wireless local area network using a wireless microwave frequency band. Microwave is the greatest feature of a near-straight lines, diffraction from a very weak, so embedded in the barrier behind wireless receiving equipment will receive very weak signal, or did not receive the signal.

2) Physical obstructions, blocking not only microwave wireless signal, it also absorbed electromagnetic energy, generate a weak flow discharge and, therefore, wireless signals obstructions in the largest metal object in a family environment is within the mesh reinforcement of floor slab, almost does not penetrate may signal in this direction. To be able to penetrate, the signal is very weak.

3) IEEE 802.11b/g standard working frequency is 2.4GHz, and the industry on many devices but also happens to work in the bands such as: microwave ovens, Bluetooth devices, no rope telephone, refrigerator, etc. If the near strong magnetic fields exist, then the wireless network will be affected.

4) If there are multiple wireless devices in a wireless environment could also have a channel conflict, wireless signal crosstalk problem.

5) From the wireless devices and cable lines 100 meters in the radio transmission towers, electric welding machine, strong signal interference sources such as trams or high-voltage power transformers, or may cause interference to radio signals or equipment.

6) Signal is outdoor propagation effects of weather conditions on wireless signals are large, or if it is in a thunderstorm days when weather cloudy comparison of signal attenuation, and signal transmission distance is farther in the sunny days.

2 、 How to improve the signal quality?

1) For wireless AP Select a best place of location. This placement locations are as follows:

a , Position should be higher, for down radiation in high places, reducing obstacles obstruct to minimize signal gaps;

b , location, location choice should make the signal as little as possible through the wall, preferably in the rooms of the wireless client and wireless AP Visual between.

2) Modify the channels, reduce Wireless interference. Note: when you set up your own wireless signal transmission channel also to try to leave wireless signal channel 5 more.

3) Home electrical interference reduction, ensuring the signals clear. Place the wireless AP as possible when away from the equipment.

3, And forget your security password device configuration, network card cannot connect to the device, what should I do?

At this time restore the factory parameters. Method for recovering the factory parameters: click "RESET" button 5 seconds or more.

4, And my computer cannot log on to the appliance, or on the Internet, and right corner of my computer network connection icon appears in the Yellow River Delta with exclamation point symbol, how to deal with?

This problem is due to your network card is not currently assigned to IP address of the causes, if it is set to automatically obtain IP , please make sure that the source router DHCP is open, DHCP functionality can automatically assign you an IP address if no DHCP , please give card set static IP address, and fill in the gateway and DNS will not be online.