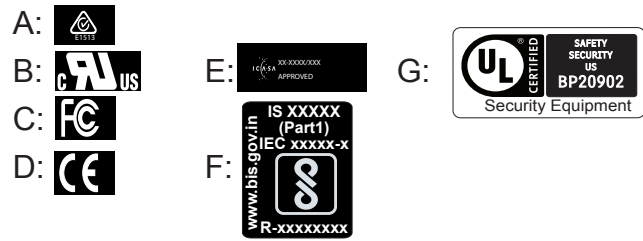


LABELS
 Dimensions:
 - Product label : 29,6 x 100 mm
 - 2 x FCC labels : 10 x 40 mm
 - Packaging label : 100 x 70 mm
 - UL label : 25.4 x 12.7 mm
 - BIS label : 14.5 x 18 mm



Material: Polyester White
 Adhesive on the back of the label
 (3M 467 or equivalent).

Printing color : White for Product label
 Black for FCC and packagings labels

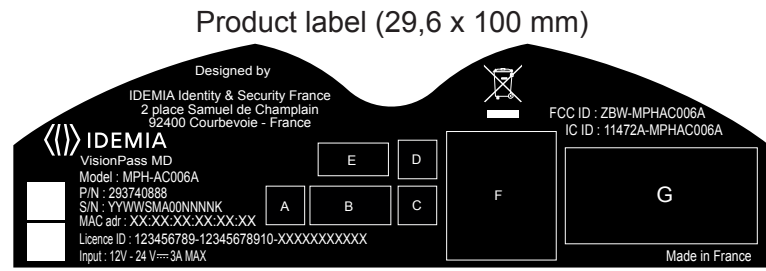
P/N, Model, Symbols, Labels, Input and Commercial name : see table
 S/N : YYWWSMA00NNNNK
 YY : Year
 WW : Week
 S : Factory (S for SER)
 MA : ARGO Product
 00 : Fixed
 NNNN : Serial number 4 characters
 (generated by the production unit)
 K : Checksum

Pack Number is generated by the production unit.

The labels are printed by thermal transfer process. To guarantee marking quality, (according to UL969), use appropriate transfer ribbon with labels.

For good reading: Let minimum distance between label edge and barcodes : 1 mm

Symbol is defined by Directive 2000/96/CE.
 Minimal dimensions are 4,9x7mm:



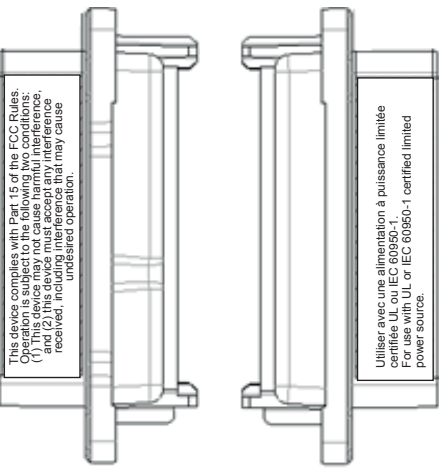
2 x FCC labels (10 x 40 mm)

This device complies with Part 15 of the FCC Rules. Operation is subject to the following two conditions:
 (1) This device may not cause harmful interference, and (2) this device must accept any interference received, including interference that may cause undesired operation.

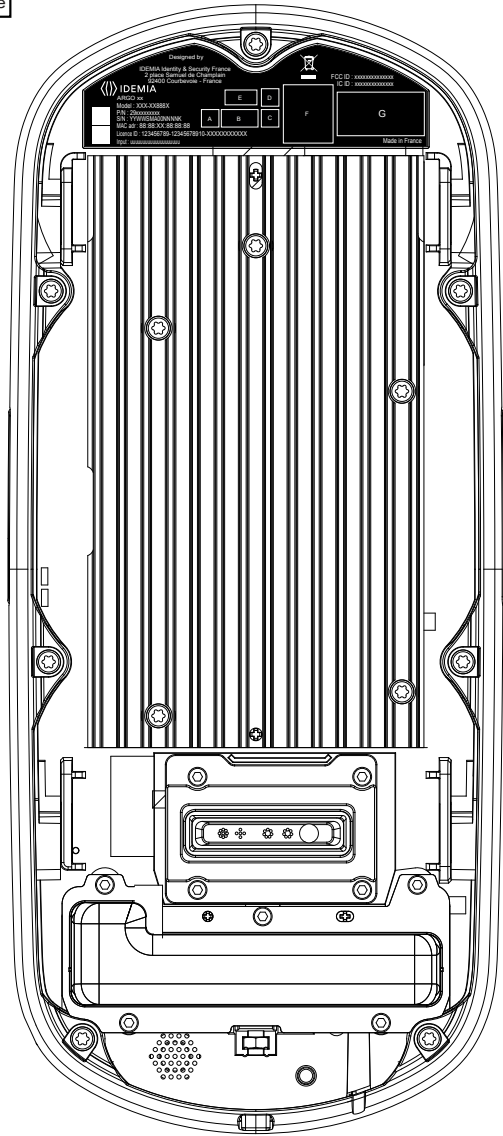
Utiliser avec une alimentation à puissance limitée certifiée UL ou IEC 60950-1.
 For use with UL or IEC 60950-1 certified limited power source.

12V - 24V --- 3A MAX

FCC labels location



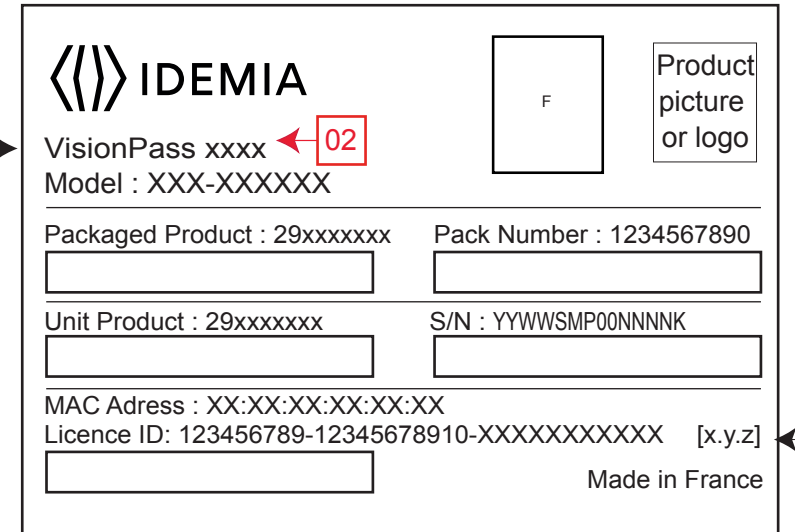
Symbols to be place according table



Symbols and additional Labels

| Commercial name | Input | Model | P/N ; Unit Product | Packaged product | FC | | CE | ICASA | BIS | UL | | Observations | UPC-A Code | ICASA |
|-----------------|----------------------|------------|--------------------|------------------|----|--|----|-------|-----|----|--|--|-----------------|-----------------|
| VisionPass MD | 12V - 24V --- 3A MAX | MPH-AC006A | 293740888 | 293744571 | | | | | | | | FCC ID: ZBW-MPHAC006A // IC ID: 11472A-MPHAC006A | 812 538 022 320 | TA - XXXX/ XXXX |
| VisionPass MDPI | 12V - 24V --- 3A MAX | MPH-AC006B | 293740891 | 293744604 | | | | | | | | FCC ID: JQ6-SE3210 // IC ID: 2236B-SE3210 | 812 538 022 337 | TA - XXXX/ XXXX |

Packaging label (100 x 70 mm)

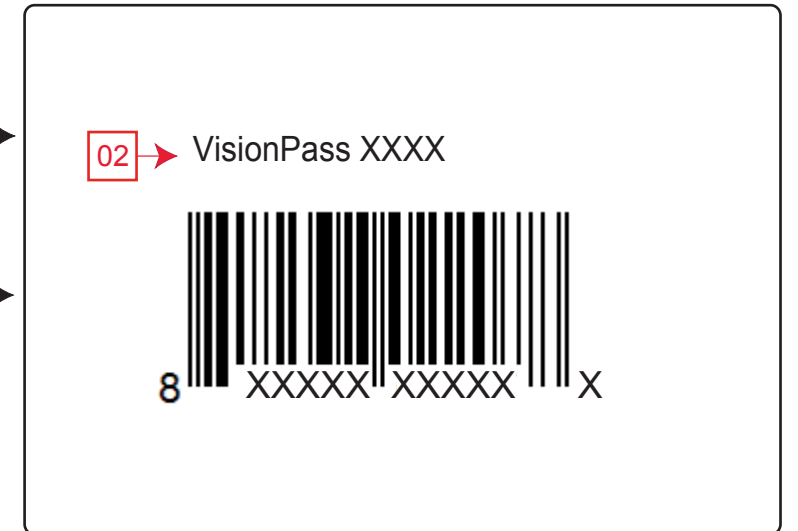


Commercial name

Commercial name

UPC-A BARCODE
 See number in table

Packaging UPC-A label (100 x 70mm)



Important notes

Export control | Not applicable

The concentrations of the substances object of the directives European 2011/65/UE - RoHS and 1907/2006/CE - REACH must be lower than the specified thresholds:
 . 2015/863/UE Annex II and 2011/65/UE Annex III & IV
 . 1907/2006/CE - REACH: substances and threshold of communication of information to the customer specified in article 33

← 02 corrections done on this drawing revision

| | | | | | |
|-------------------------------|---------------------|--------------------|--|---------------------------------|-----------------------------------|
| ETABLI DRAWN | NOM / NAME AUSY | DATE 15/07/2019 | VERIFIE CHECKED | NOM / NAME Rodolphe LEFEBVRE | DATE 15/07/2019 |
| LIBELLE DENOMINATION | | | Etiquette ARGO pour Produit et Emballage ARGO Label for Product and Packaging | | |
| --- | Adobe - ILLUSTRATOR | A3 | 1/1 | 6000036150 | R40 000 02 |
| REFERENCE ARTICLE PART NUMBER | | ECHELLE SCALE | FORMAT SIZE | FEUILLE SHEET | NUMERO DU DOCUMENT DRAWING NUMBER |