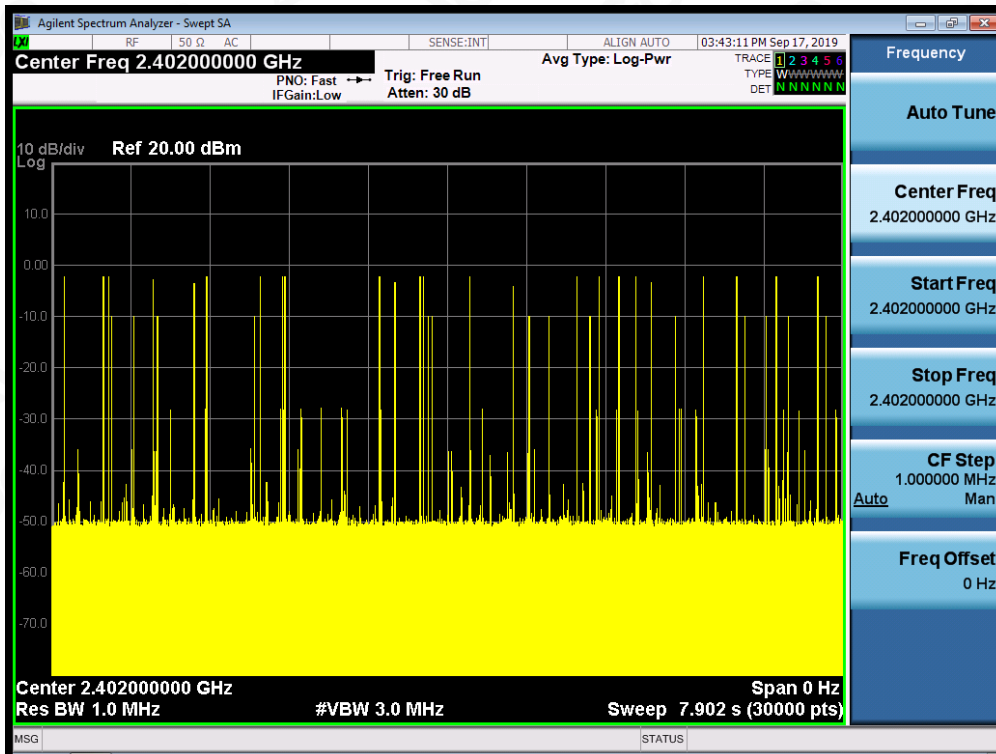
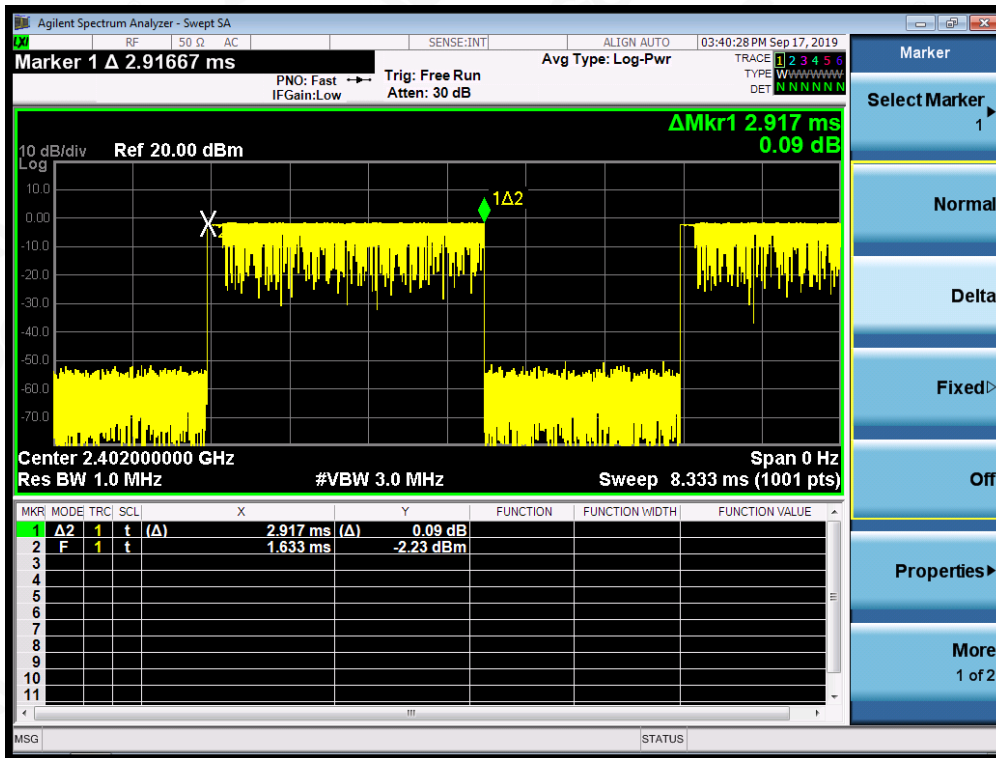


### TEST PLOT OF LOW CHANNEL



Attestation of Global Compliance

Attestation of Global Compliance(Shenzhen)Co.,Ltd.

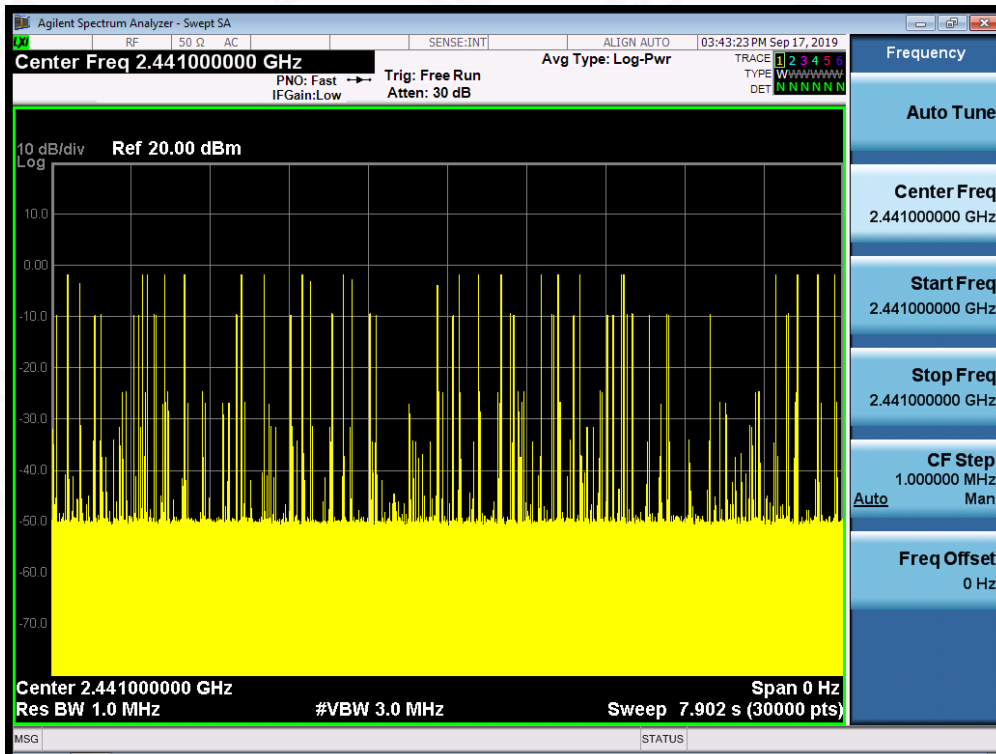
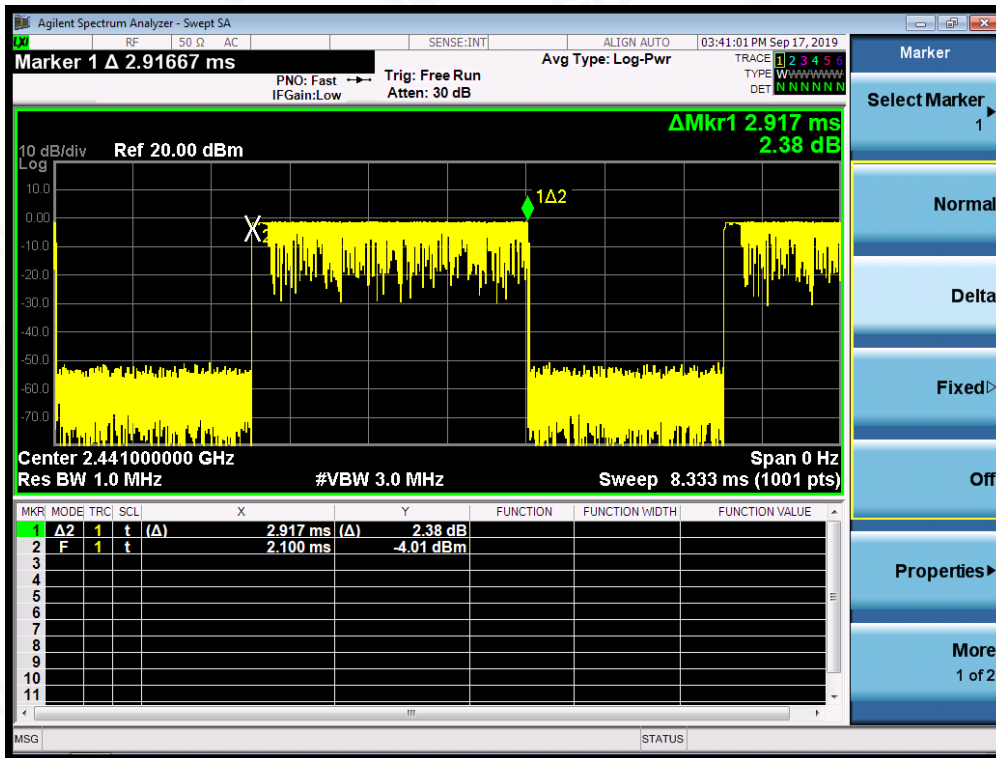
Add: 2/F., Building 2, Sanwei Chaxi Industrial Park, Sanwei Community,  
Hangcheng Street, Bao'an District, Shenzhen, Guangdong, China

Tel: +86-755 2523 4088

E-mail: agc@agc-cert.com

Service Hotline: 400 089 2118

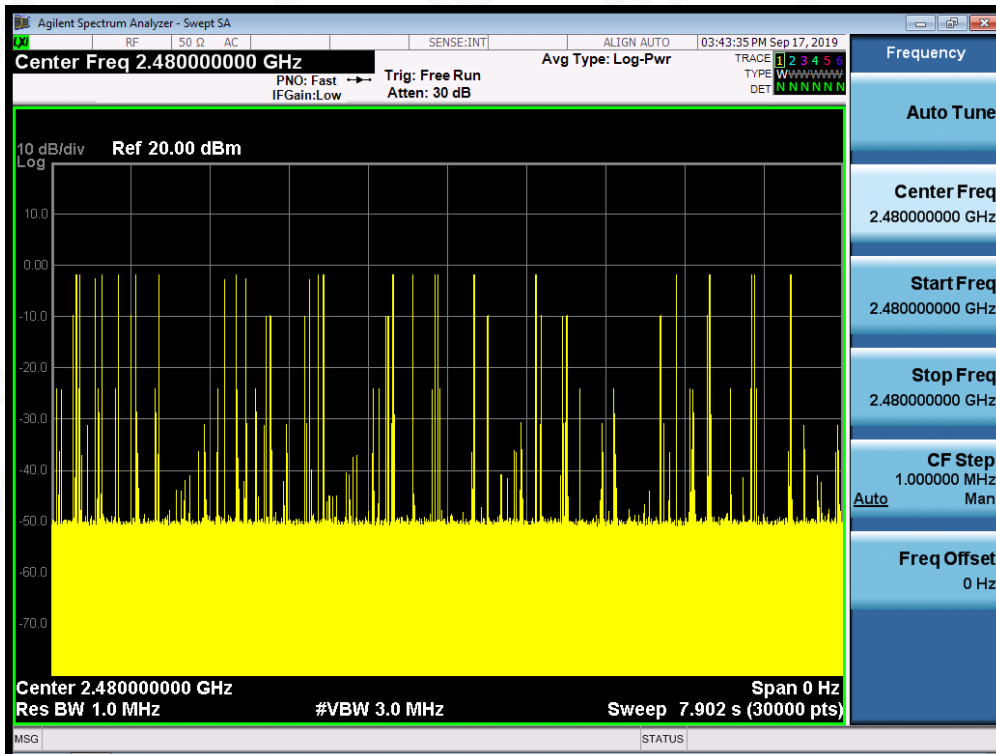
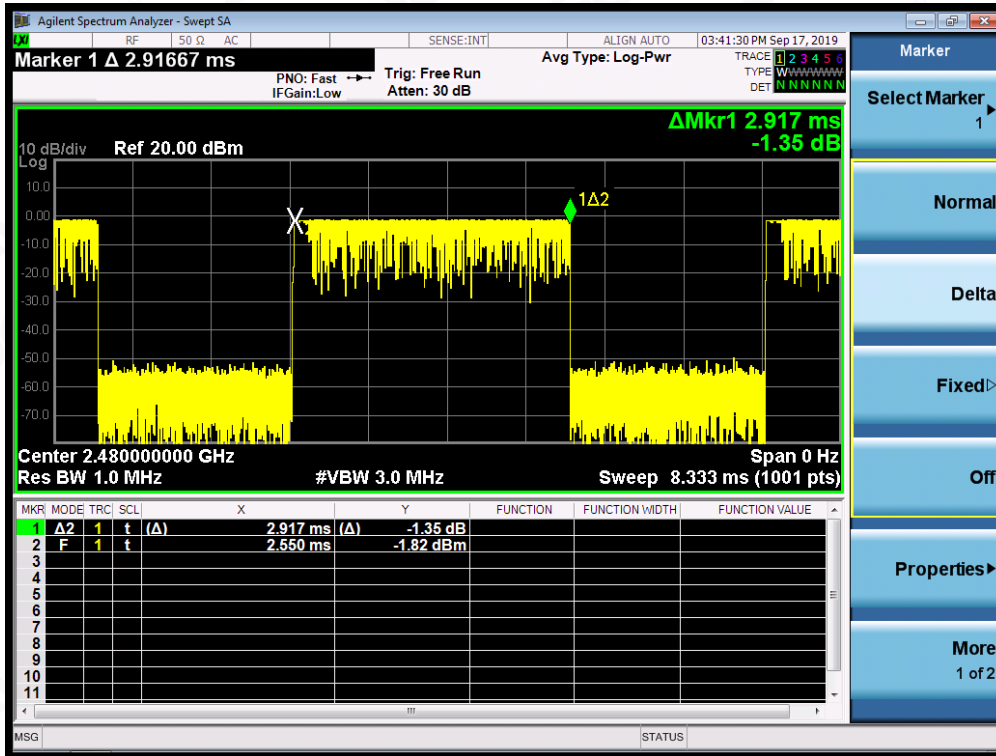
TEST PLOT OF MIDDLE CHANNEL



Attestation of Global Compliance

Attestation of Global Compliance(Shenzhen)Co.,Ltd.  
Add: 2/F., Building 2, Sanwei Chaxi Industrial Park, Sanwei Community,  
Hangcheng Street, Bao'an District, Shenzhen, Guangdong, China  
Tel: +86-755 2523 4088 E-mail: agc@agc-cert.com Service Hotline:400 089 2118

TEST PLOT OF HIGH CHANNEL



### 13. FREQUENCY SEPARATION

#### 13.1. MEASUREMENT PROCEDURE

The EUT shall have its hopping function enabled. Use the following spectrum analyzer settings:

1. Span: Wide enough to capture the peaks of two adjacent channels.
  2. RBW: Start with the RBW set to approximately 30% of the channel spacing; adjust as necessary to best identify the center of each individual channel.
  3. Video (or average) bandwidth (VBW)  $\geq$  RBW.
  4. Sweep: Auto. e) Detector function: Peak. f) Trace: Max hold. g) Allow the trace to stabilize.
- Use the marker-delta function to determine the separation between the peaks of the adjacent channels.

#### 13.2. TEST SETUP (BLOCK DIAGRAM OF CONFIGURATION)

Same as described in section 6.2

#### 13.3. MEASUREMENT EQUIPMENT USED

The same as described in section 6.3

#### 13.4. LIMITS AND MEASUREMENT RESULT

CHANNEL	CHANNEL SEPARATION	LIMIT	RESULT
	KHz	KHz	
CH01-CH02	1000	$\geq 25$ KHz or 2/3 20 dB BW	Pass

TEST PLOT FOR FREQUENCY SEPARATION



Note: The 8-DPSK modulation is the worst case and recorded in the report.



**APPENDIX A: PHOTOGRAPHS OF TEST SETUP**  
**RADIATED EMISSION TEST SETUP BELOW 1GHZ**



**RADIATED EMISSION TEST SETUP ABOVE 1GHZ**





**APPENDIX B: PHOTOGRAPHS OF EUT**

**ALL VIEW OF EUT**





TOP VIEW OF EUT



BOTTOM VIEW OF EUT

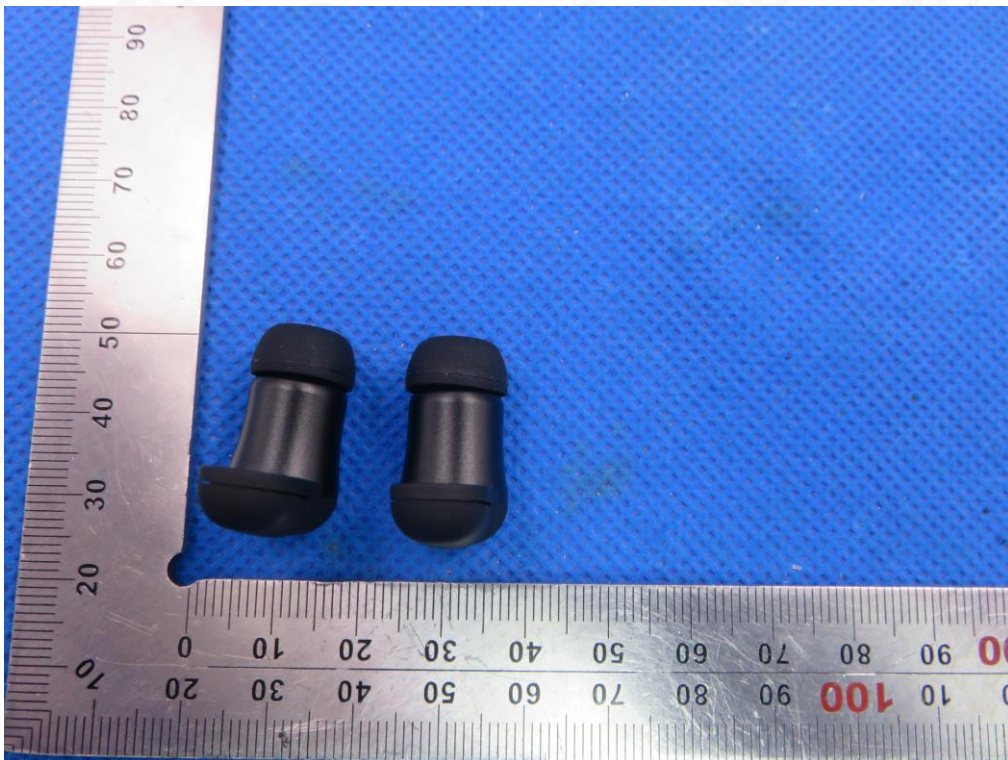




FRONT VIEW OF EUT



BACK VIEW OF EUT





LEFT VIEW OF EUT

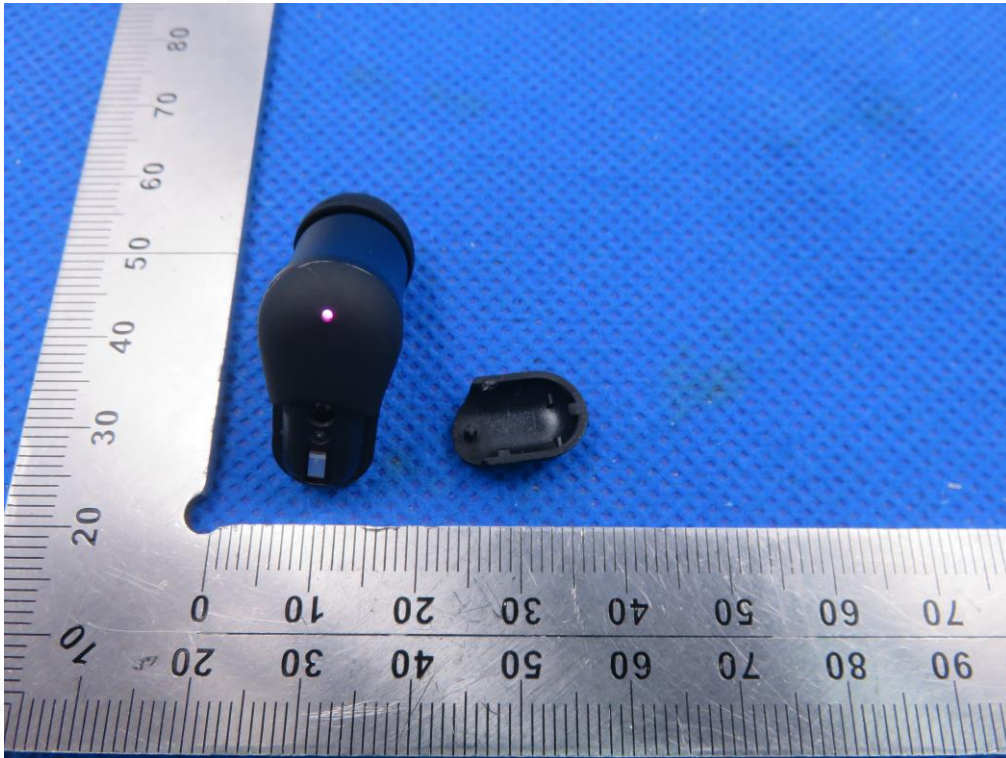


RIGHT VIEW OF EUT





OPEN VIEW OF EUT-1(left)



OPEN VIEW OF EUT-2

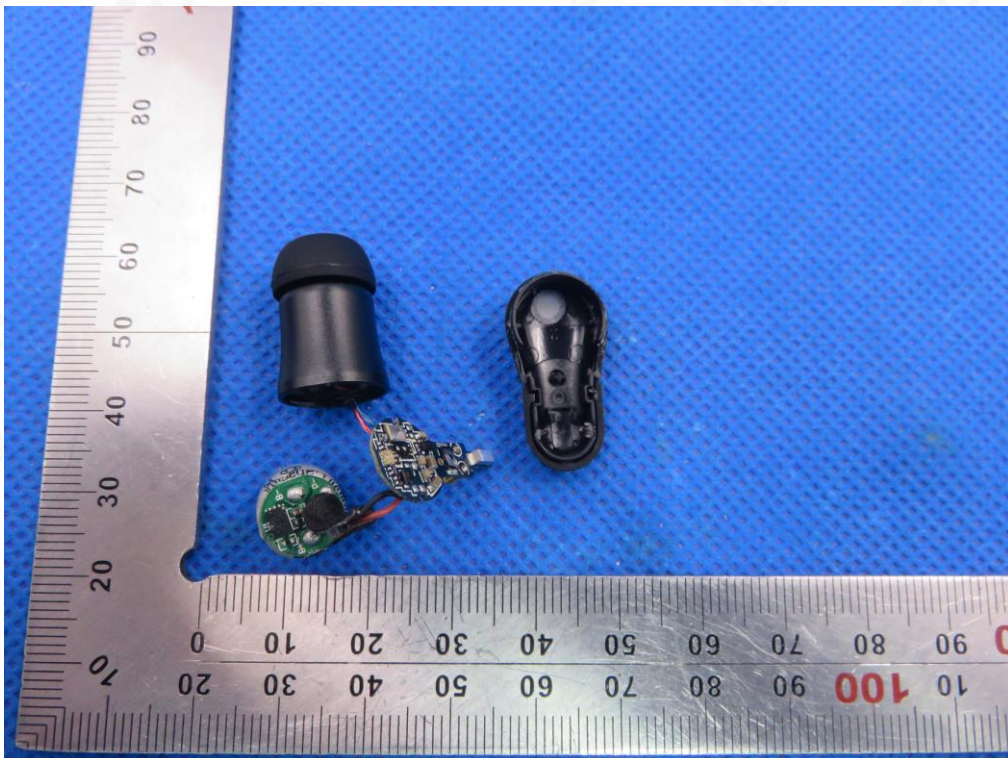




OPEN VIEW OF EUT-3

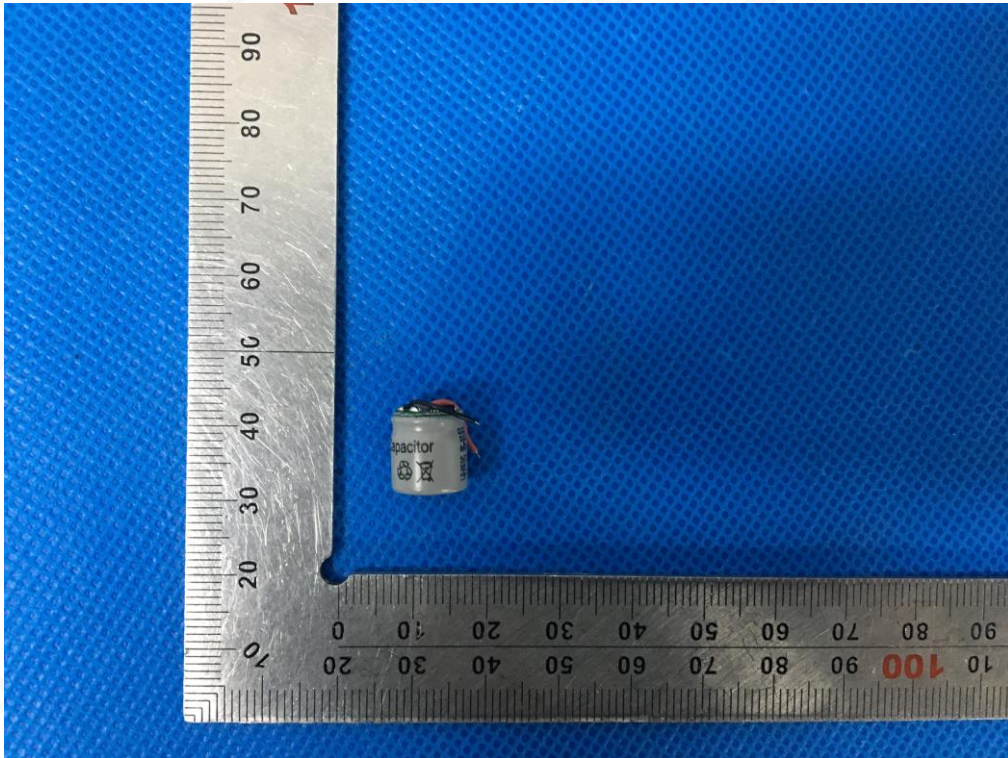


OPEN VIEW OF EUT-4

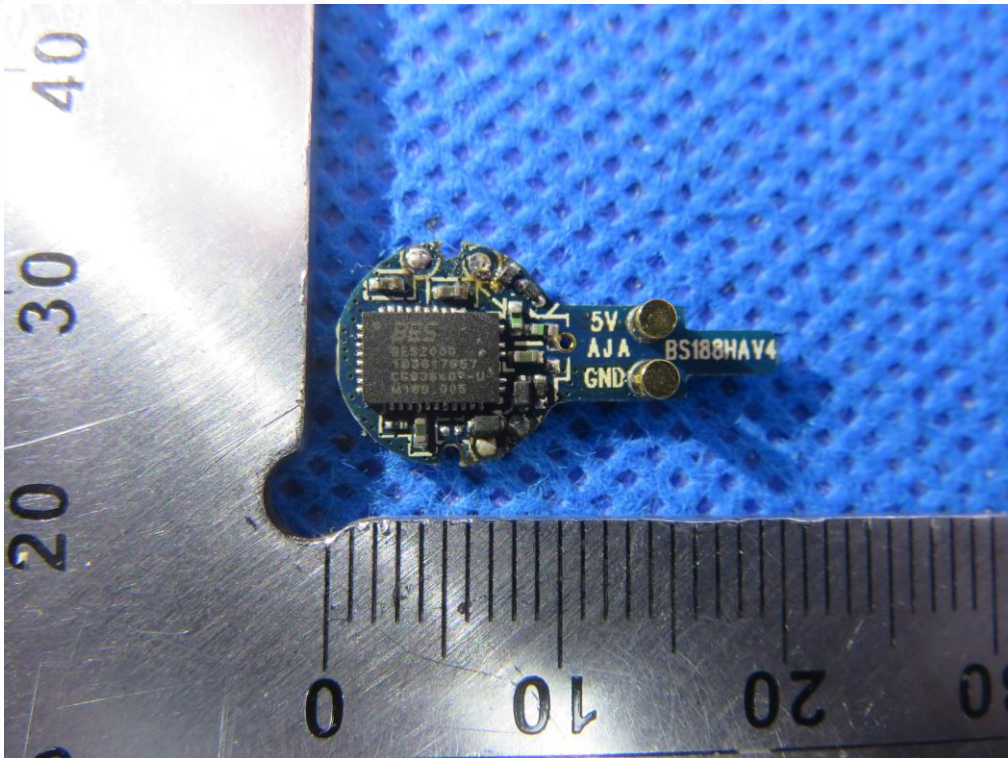




VIEW OF BATTERY

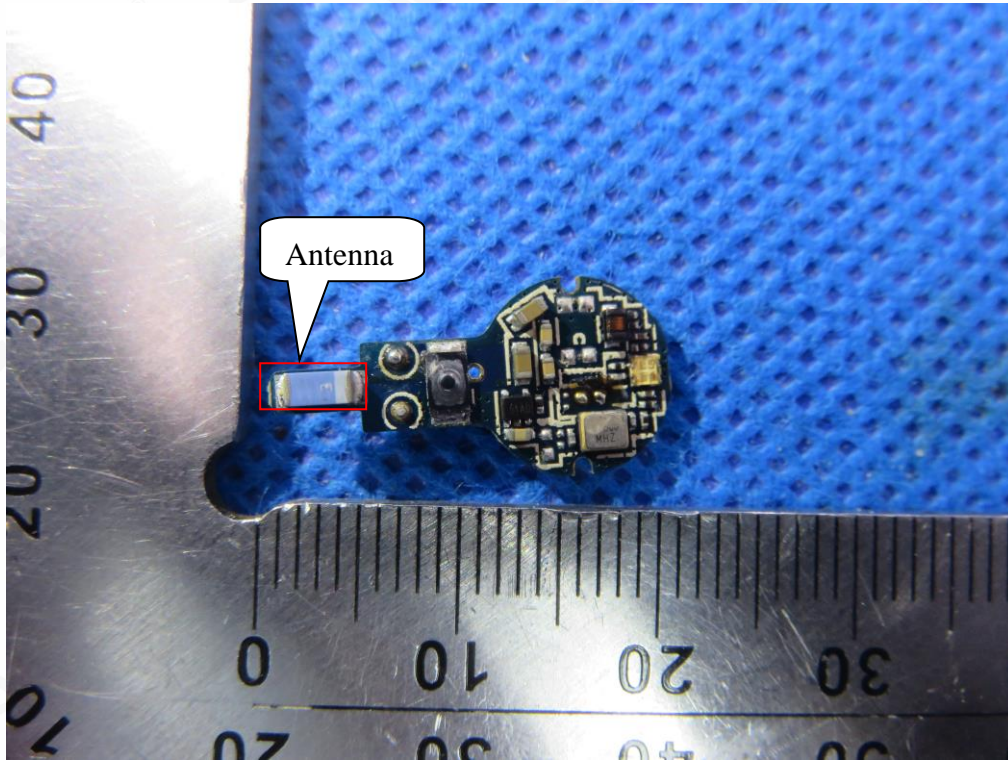


INTERNAL VIEW OF EUT-1

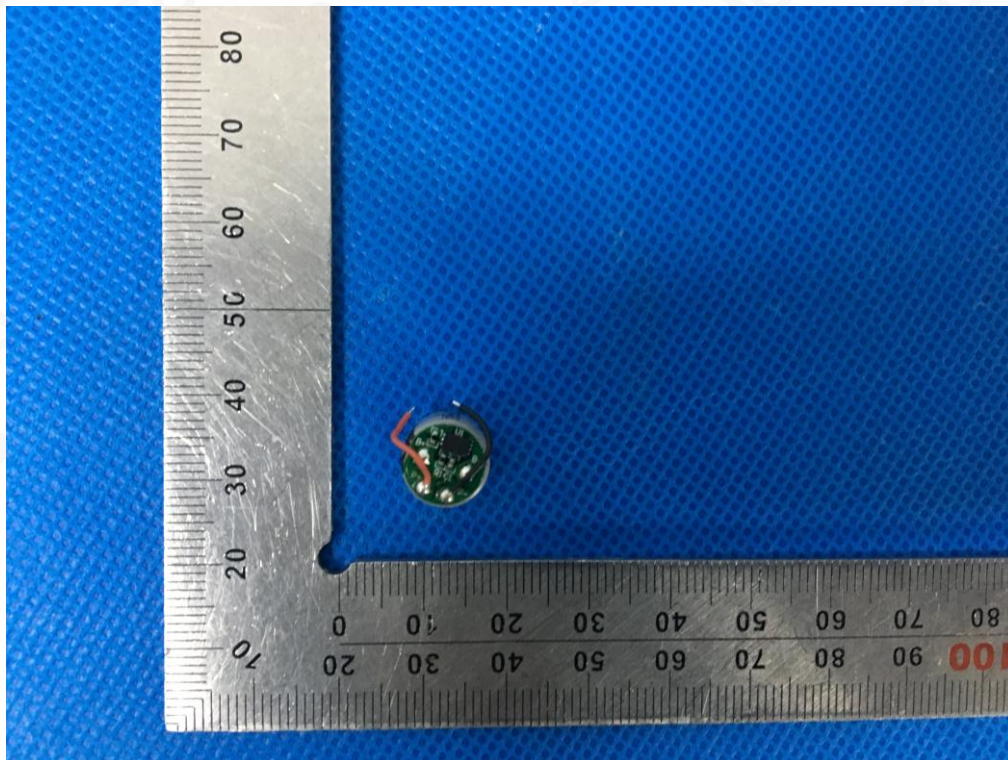




INTERNAL VIEW OF EUT-2

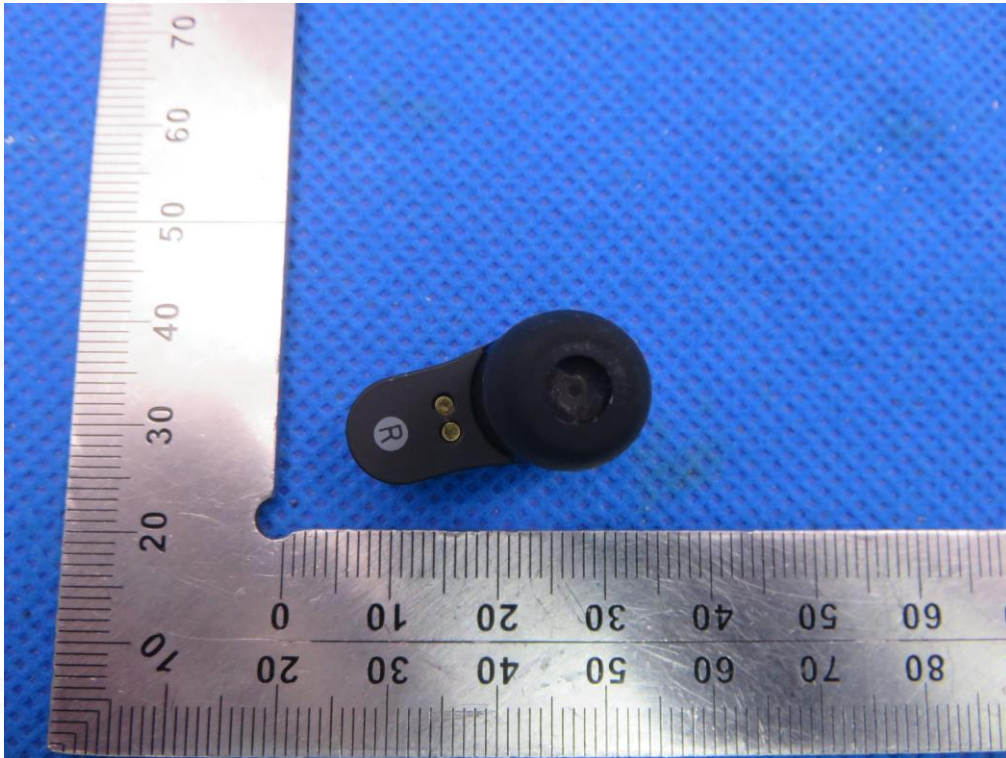


INTERNAL VIEW OF EUT-3

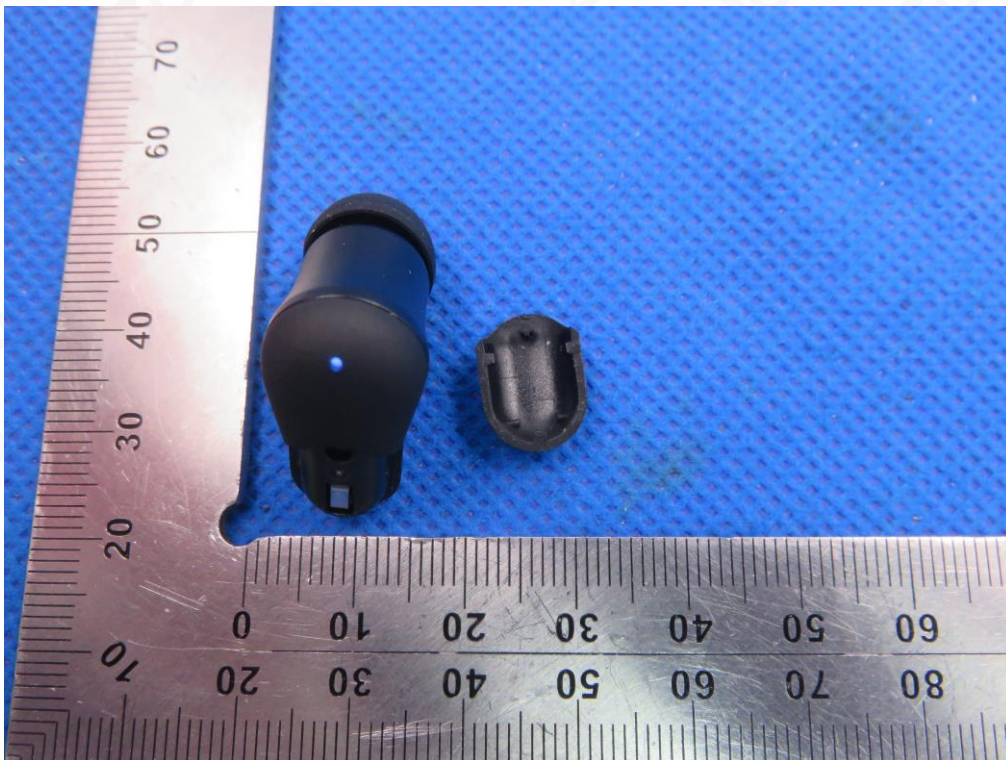




OPEN VIEW OF EUT-1(right)



OPEN VIEW OF EUT-2

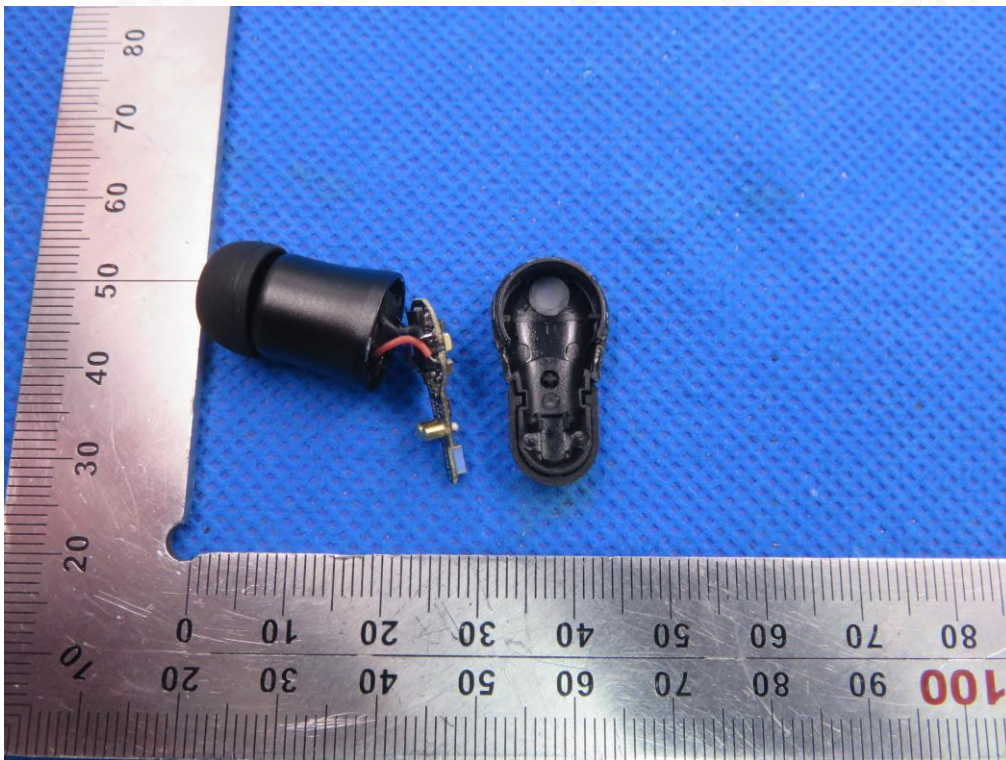




OPEN VIEW OF EUT-3

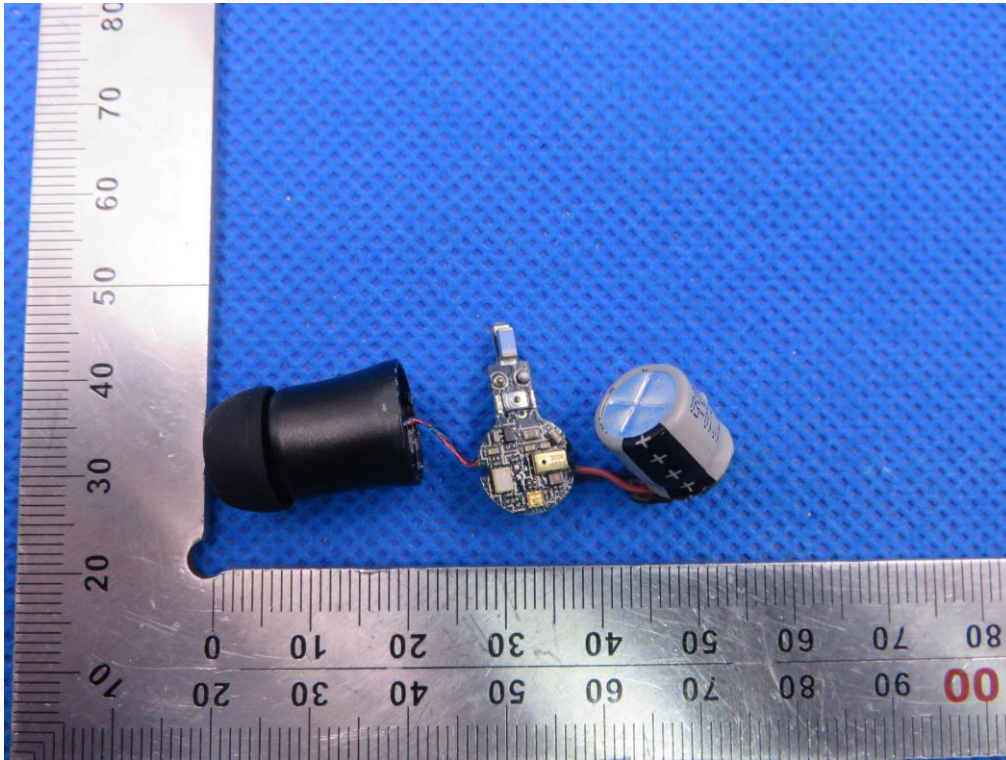


OPEN VIEW OF EUT-4

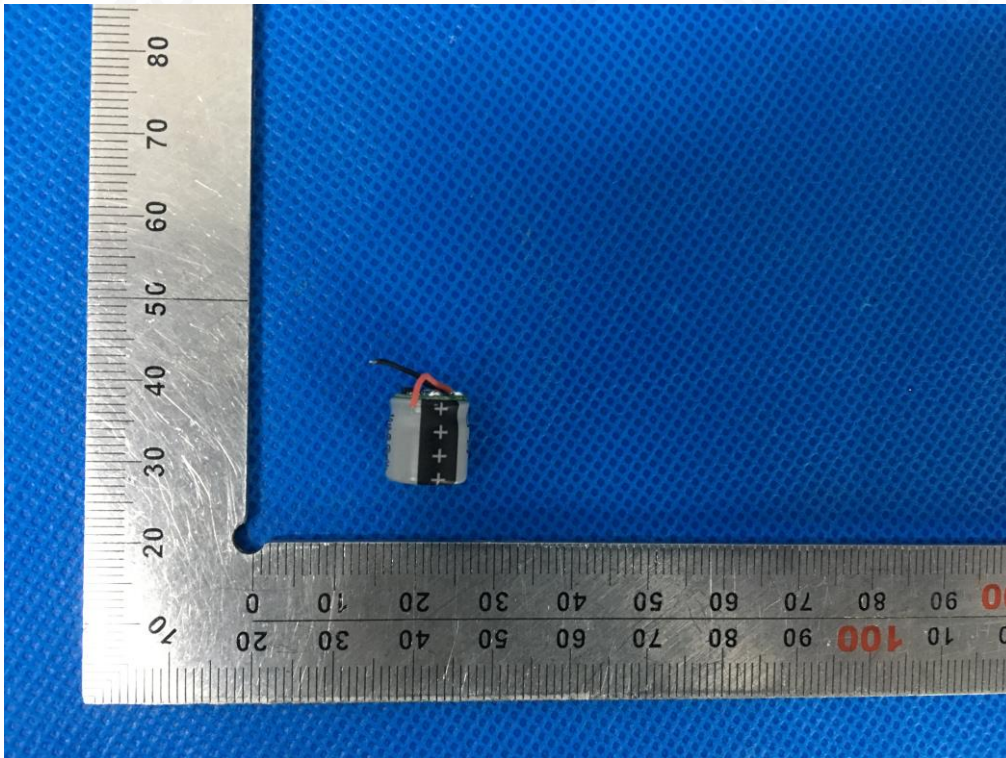




OPEN VIEW OF EUT-5

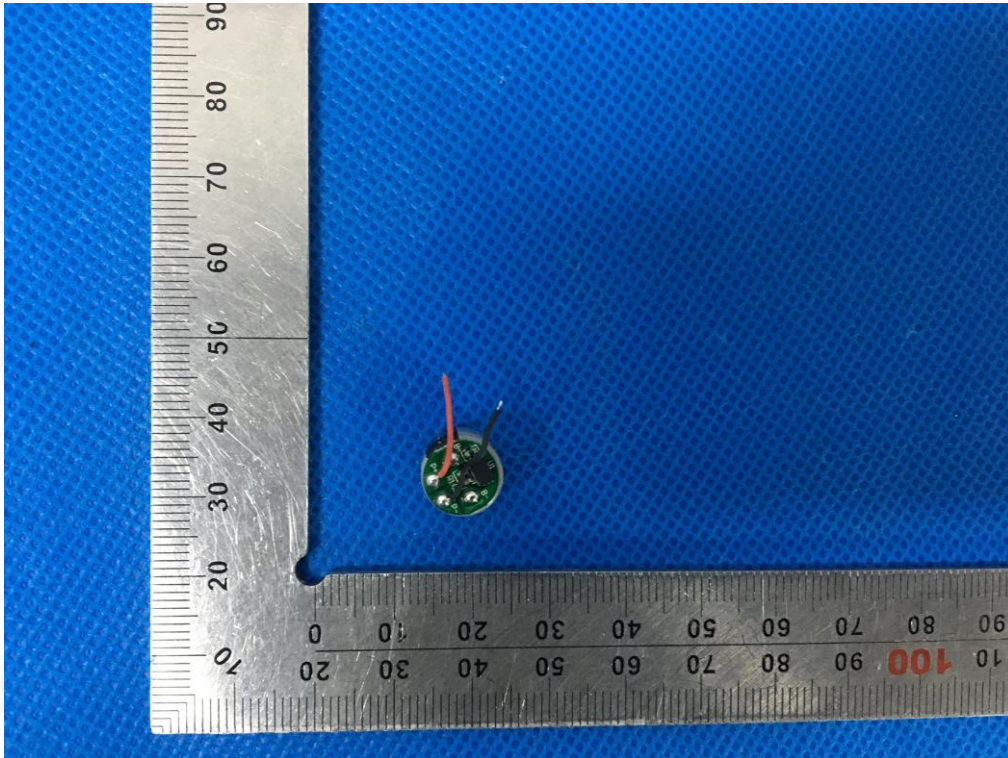


VIEW OF BATTERY

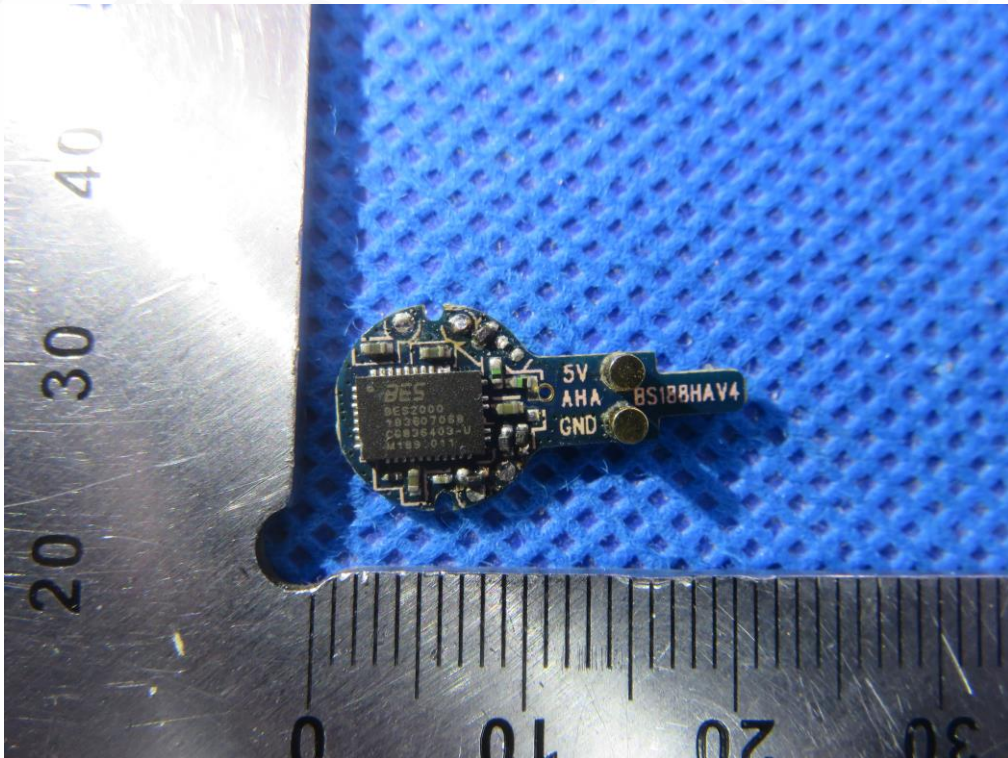




INTERNAL VIEW OF EUT-1

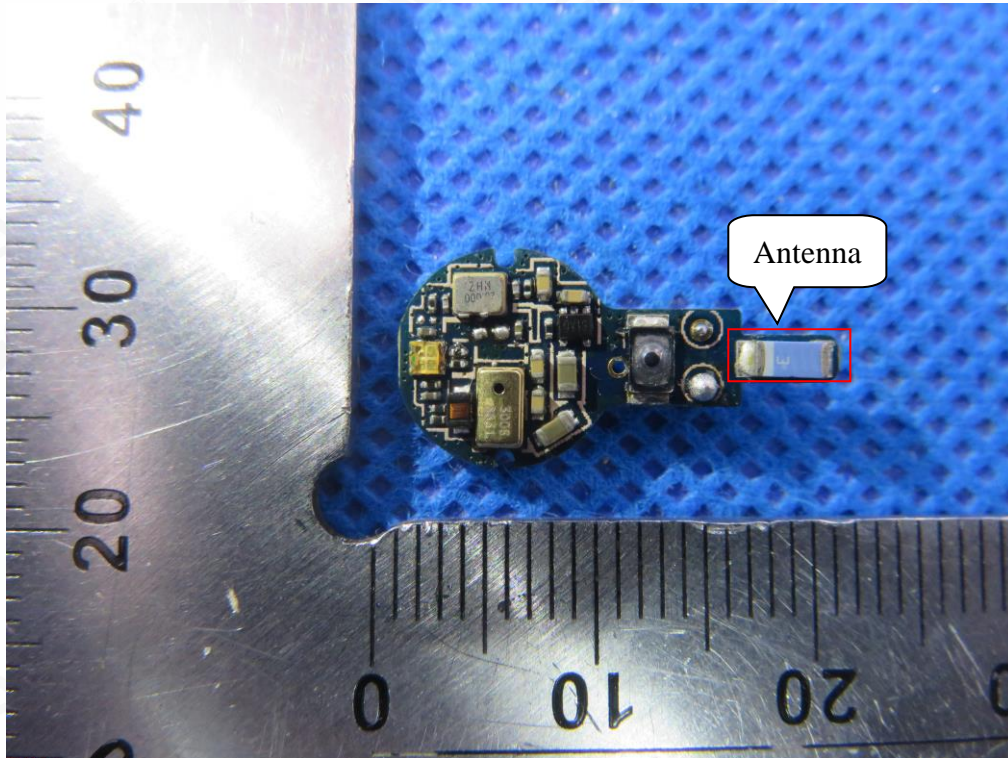


INTERNAL VIEW OF EUT-2

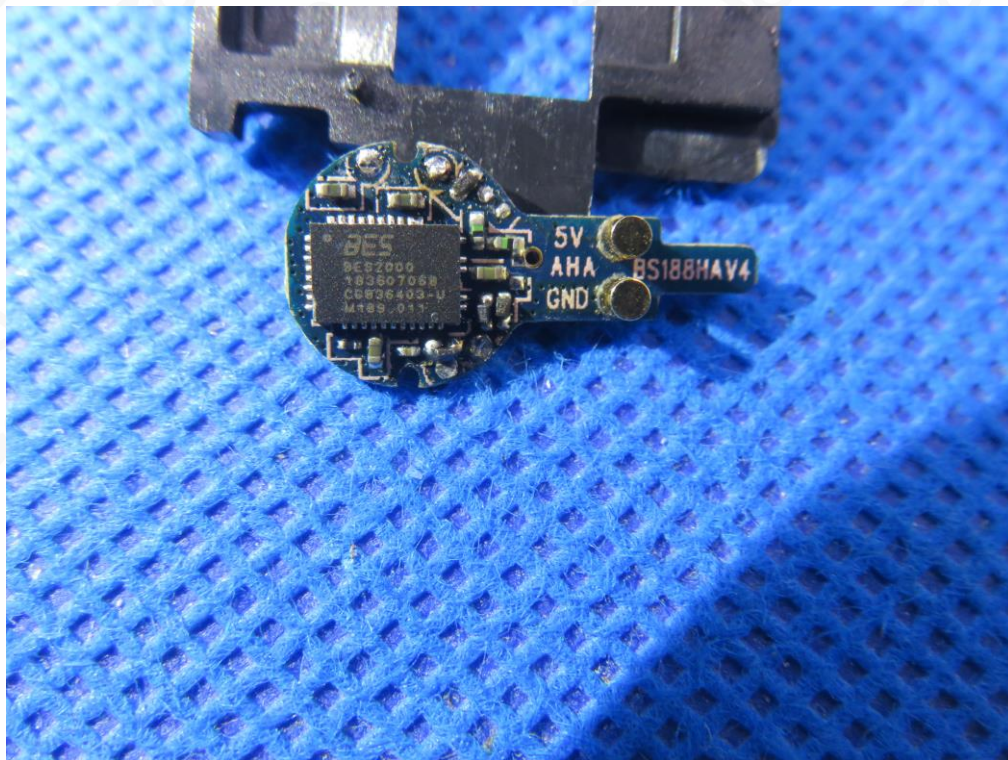




INTERNAL VIEW OF EUT-3



INTERNAL VIEW OF EUT-4



---END OF REPORT---

