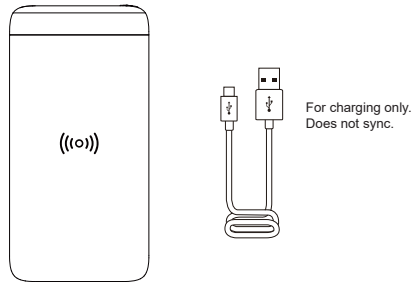


Page Size 105 x 144mm  
 Folded to size 105 x 74mm  
 Paper to be 105GSM Gloss

### Important Safety Instructions

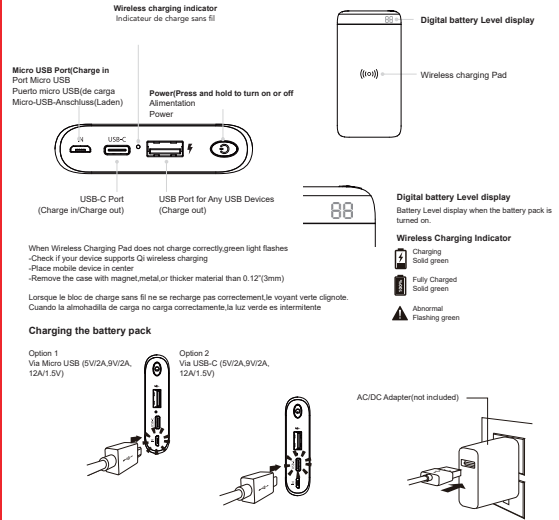
- Only use original or reputable third party chargers and cables
- Do not get wet to avoid causing short circuit damage and leakage
- Do not use in extreme hot, humid or corrosive environments to avoid short circuit damage and leakage
- Do not place too close to magnetic strip or chip ID card to avoid magnetic failure
- Do not place within 20cm of implantable medical devices (pacemaker, cochlear implant, etc.) to avoid potential interference
- Do not clean with harmful chemicals or detergents
- Misuse, dropping or excessive force may cause damage to the charging stand



iPhone is a trademark of Apple inc., registered in the U.S. and other countries.  
 The Qi Symbol is a trademark of the Wireless Power Consortium.  
 Android is a trademark of Google Inc



4



### Qi Certified

Certification program ensures this charger has passed rigorous tests to guarantee safety, compatibility and energy efficiency

1

### Compatibility

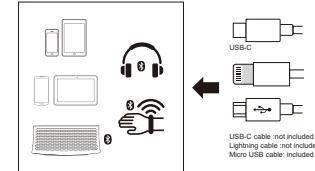
#### Compatible with Qi-enabled devices\*including

**Wireless Qi Charging**  
 iPhone 11/11 Pro/11 Pro Max, iPhone X/XS/XR, iPhone 8/8 Plus, AirPods Pro, Samsung Galaxy S 10/S 10e/S 9/S 9+ / S 8/S 8+, S7/S6, Samsung Galaxy Note 10/9/8/5, Google Pixel 4/4XL, 3XL, LGV 50V 40V 35/30, G 9/7/6, and other Qi enabled smartphones/tablets and accessories

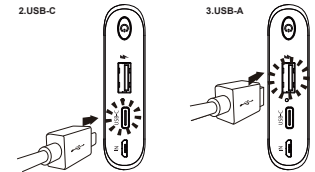
**USB-C**  
 Samsung Galaxy S10/S 10e/S9/S 9+ / S8/S8+ / S7/S6, Samsung Galaxy Note 10/9/8/5, Google Pixel 4/4XL, 3a/3aXL, 3/3XL, 2/2XL, 1/1XL, LGV 50V 40V 35V 30, G 8/7/6, and select models of iPad Pro, Galaxy Tab, Microsoft Surface Pro/Go, Google PixelS late with USB-C charging, and most other devices that charge via USB-C

**USB-A**  
 Most devices that charge via USB like smartphones, tablets, portable speakers, wireless headphones, wearables, and more  
 Safety features for total protection  
 -Temperature control  
 -Overpower protection  
 -Short-circuit prevention

**Charging mobile devices**  
 Press the power button to start charging your device. Smart charging technology identifies your device and charges it at full speed  
 Delivers total 15W: 5W on wireless charging pad and up to 10W on combined USB-A and USB-C



**1. Wireless Charging Pad**  
 Place your Qi enabled smartphone on the center of the wireless charging pad  
 Charges through most cases of Polycarbonate(PC) or Thermoplastic Polyurethane(TPU) material up to 0.12"(3mm)



2

### FCC Compliance Statement

This equipment complies with Part 15 of the FCC Rules. Operation is subject to the following two conditions: (1) This equipment may not cause harmful interference, and; (2) This device must accept any interference received, including interference that may cause undesired operation.

### NOTE

This equipment has been tested and found to comply with the limits for a Class B digital device, pursuant to part 15 of the FCC Rules. These limits are designed to provide reasonable protection against harmful interference in a residential installation. This equipment generates—and can radiate—radio frequency energy and, if not installed and used in accordance with the instructions, may cause harmful interference to radio communications. However, there is no guarantee that interference will not occur in a particular installation. If the equipment does not cause harmful interference to radio or television reception, which can be determined by turning the equipment off and on, the user is encouraged to try to correct the interference by one or more of the following measures: (1) Reorient or relocate the receiving antenna (2) Increase the separation between the equipment and the receiver(s) (3) Connect the equipment into an outlet on a circuit different from that to which the receiver is connected, (4) Consult dealer or an experienced radio/TV technician for help.

### Warning

Changes or modifications to this unit not expressly approved by the party responsible for compliance could void the user's authority to operate the equipment.  
 This equipment cannot be wireless charging when moving as portable use.

### Specifications

<b>Battery Type</b>	Lithium-ion Polymer
<b>Capacity</b>	10,000mAh
<b>Input</b>	USB-C: 5V/2A, 9V/2A, 12A/1.5V Micro USB: 5V/2A, 9V/2A, 12A/1.5V
<b>Output*</b>	Wireless: 10W, 7.5W, 5W USB-C: 5V/2A, 9V/2A, 12A/1.5V USB-A: 5V/2A, 9V/2A, 12A/1.5V
<b>Dimensions(W x H x D)</b>	2.8" x 5.4" x 0.7" / 70mm x 138mm x 17.5mm

\*Maximum combined charge-out power is 15W when charging multiple devices.

3