



# Wireless Charger

user manual

Model : WD17B

## Contents

- 1.What is in the box
- 2.Product Introduction
- 3.Specification
- 4.How to use
- 5.Important Notification

Thanks for purchasing this fantastic Qi Wireless charger. Please read the manual in detail for proper operation before you get to start to use.

What is in the box:

1) Qi Wireless Charger x1pc

2) User Manual x1pc

Manufacturer: SHENZHEN DNS INDUSTRIES CO., LTD.

Address:23/F Building A, Shenzhen International Innovation Center,  
No.1006 Shennan Road, Futian, Shenzhen, China

The importer: XXXXXXXXXXXXXXX

The importer: XXXXXXXXXXXXXXXXXXX

## Product Introduction

Micro USB Charging Port

LED indicator

Antiskid strip

## Specification

Features:

Main functions: single coil wireless charger transmitter;

Products applicable: all wireless charging equipment accorded with Qi standard;

Charging type: one-on-one charge corresponding area;

Standard version: WPC - 1.2.4;

Products applicable: all wireless charging equipment accorded with Qi standard;

Charging type: one-on-one charge corresponding area;

Input: DC5V 2A, DC9V 1.67A

Output: DC5V 1A, DC9V 1.1A (10W Max)

## **How to USE**

### **1, Plug Your Qi Wireless Charger to the Power Source**

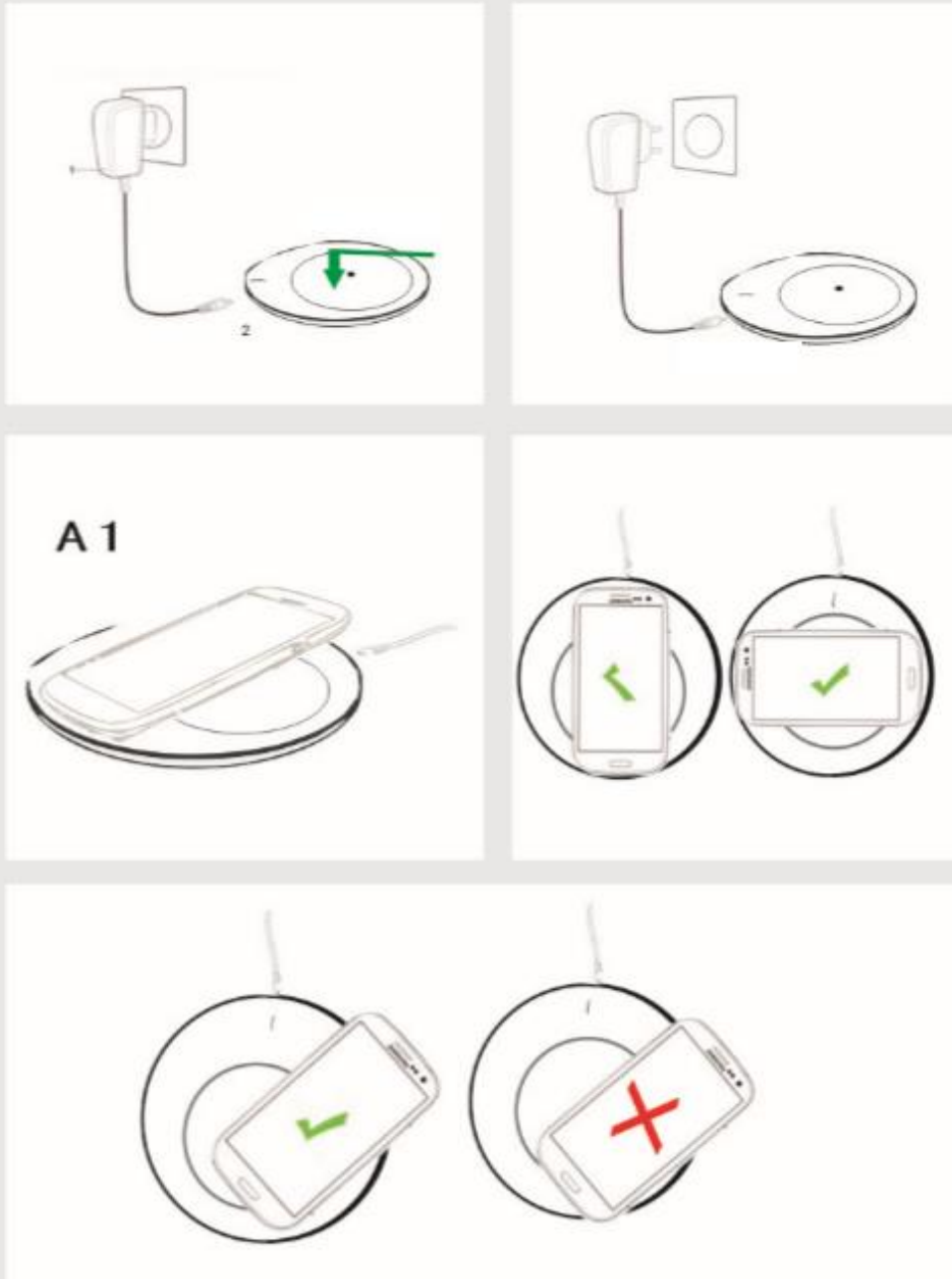
Plug the small end (micro USB B port) of the USB cord into the side of the Qi charger. You can then plug the larger end (USB A port) of the USB cord into the wall charger, and then plug the charger into the wall, or you can plug the larger end into a PC

### **2, Place Your Cellphone on the Qi Charger**

After you have connected the charger to a power source (either your computer or a wall outlet), all you need to do to charge your phone is simply place your phone on top of the charger.

Before you try to charge your phone with the charger, ensure that your phone is compatible with Qi chargers and make sure that the phone is well located at the charging area of wireless charger.

## Install the graphic



### 3, Charging Status Indicator

1) The indicator green light is on for 4s , then enters the standby

status, the green light goes out.

2) Please lay the device directly on wireless charger for charging, the green light always stays on when the charger is in charging status

3) When the device is full of power, the green light goes out.

4) The transmitter has the function of detecting foreign objects(FOD).

If there is a foreign object on the transmitter, the green light will flash.



### **Important Notification**

The First: To protect people from harm and property loss, we make a clear explanation on what you do should obey:

A. There are concerning the possibilities of death and severe wound:

People who use heart-birth-maker should consult your doctor before you use this product;

And please leave it at a distance of 22cm from the place where you install your heart-birth-maker, the electromagnetic wave have influence on heart-birth-maker's work.

B . Attention! It may led to heat, fire and electric shock:

1 Do not put it into water or any other liquid, Do not make it wet;

- 2 Do not pull the AC adapter out with wet hands, ensure the safety and integrity of the adapter;
- 3 Do not let the dust or other things accumulate on the product and the AC adapter;
- 4 Do not use the product outside the temperature - 20 °C to 40 °C;
- 5 Do not charge in places where the sun shine directly or with high temperature;
- 6 Do not use this product in places that are easy to fall, so as not to break;
- 7 Do not lay the magnetic card, magnetic record media and precise machine too close to the protect;
- 8 Do not decompose and remold;
- 9 Do not lay anything between the non-connection charging pad and the charging machine;
- 10 Do not surpass the rated value when using the plug and other wiring layout.;
- 11 Do not make any breakage on the AC adapter, please make sure you connect the AC adapter fully and take the AC adapter off the plug when it's not used ;
- 12 Please teach your children to use

NOTE: This equipment has been tested and found to comply with the limits for a Class B digital device, pursuant to Part 15 of the FCC Rules. These limits are designed to provide reasonable protection against harmful interference in a residential installation. This equipment generates, uses and can radiate radio frequency energy and, if not installed and used in accordance with the instructions, may cause harmful interference to radio communications. However, there is no guarantee that interference will not occur in a particular installation. If this equipment does cause harmful interference to radio or television reception, which can be determined by turning the equipment off and on, the user is encouraged to try to correct the interference by one or more of the following measures:

- Reorient or relocate the receiving antenna.
- Increase the separation between the equipment and receiver.
- Connect the equipment into an outlet on a circuit different from that to which the receiver is connected.
- Consult the dealer or an experienced radio/TV technician for help.

CAUTION: Changes or modifications not expressly approved by the party responsible for compliance could void the user's authority to operate the product.



This equipment complies with FCC radiation exposure limits set forth for an uncontrolled environment. This equipment should be installed and operated with minimum distance 20cm between the radiator and your body. This transmitter must not be co-located or operating in conjunction with any other antenna or transmitter.