



WM_ONN
 DNS_ONA18CA002
 OPT02
 01.29.18

This document is intended only for use as a reference for the individual or entity to which it is being presented and may contain information which is privileged and confidential. No reproduction or distribution is permitted without the consent of r-pac International Corporation.

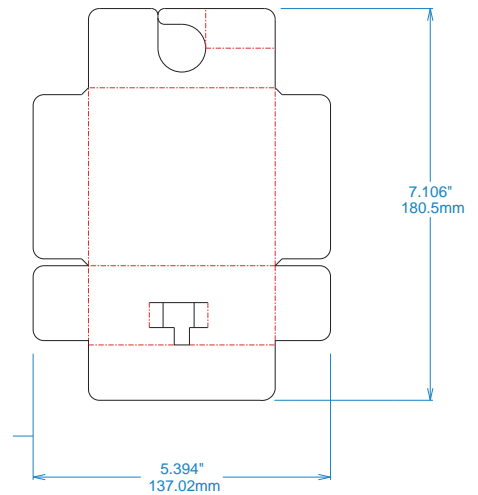
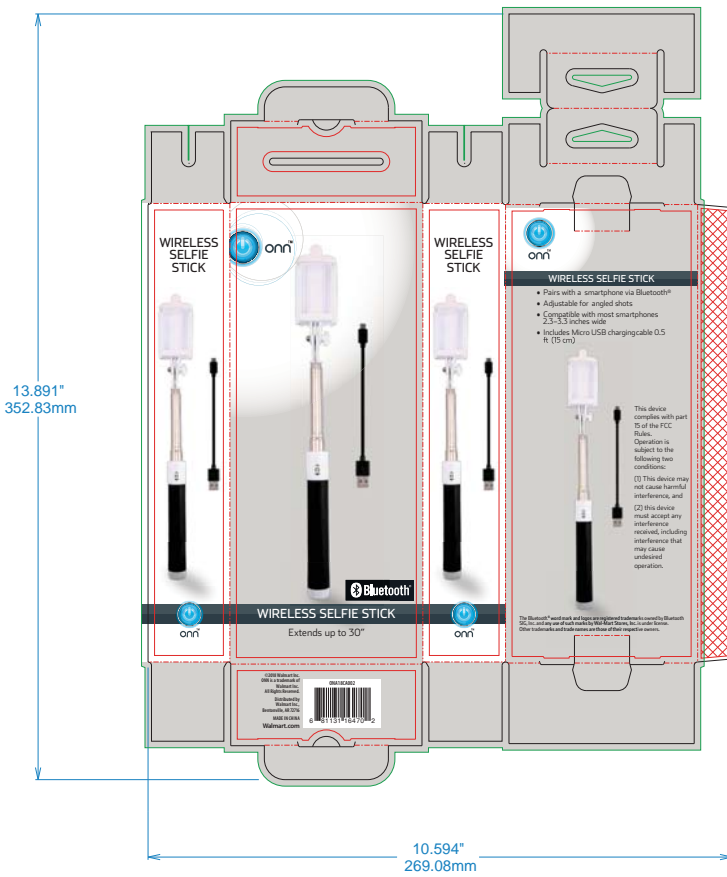
Please note this disk/artwork is not press ready. Additional steps (pre-press) are required before producing final files. r-pac is only responsible for the layout and art placement/art adaptation. UPC / Barcode is for placement only and should be created by the printer.



ATTENTION SUPPLIER:

Change in Dimension format to comply with MET standards:
REVIEW YOUR DIMENSIONS
 Ensure they are sized in the largest whole unit possible
 Ensure US standard dimensions are rounded up 2 places after the decimal
 Ensure Metric dimensions are rounded up 2 places after the decimal

Specifications for Packaging Art Adaptation		Walmart	File produced by:
Job #:		AR41540	Country of origin: China
Supplier:	DNS	Printer name:	
Printing type:	Box	Printer phone:	
Package dimensions:	10.594" x 13.891"	Printer email:	
Brand/ID:	ONN	Item material/color:	400g CCNE
Department # / Category:	D87	Transmission resource:	Technik
Walmart SKU:	ONN18CA002	Additional notes:	
UPC:	681131164702		
Due to printer:		Pack-out:	Shipping:
TBD	TBD	TBD	TBD
Packing Preference:		Walmart	Tommy
Contact:		r-pac International, 132 West 34th Street, New York, NY 10018	
		Tanya Starzec, TEL: 212-465-2181	
Additional comments:		R-Pac to add bleeds as necessary.	
		Walmart or approved Art Adaptation Resources cannot distribute fonts to printers or suppliers. Fonts can be purchased at: myfonts.com	



- Cut line
- - - Fold line
- Copy safe area
- Outside bleed
- Glue area