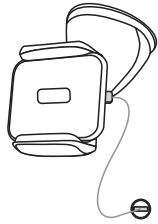


User Guide 1.0



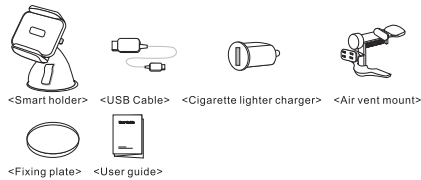
Vehicle wireless charger
Smart holder

- 1.Contents
- 2.Getting started
- 3.How to use
- 4.Specification
- 5.Cautions

Getting Started

Smart holder is effective smart phone car holder as well as efficient wireless charger.
Listening music and using navigation with your smart phone in car, You can keep your smart phone as charging mode.
The retractable clamp comes with universal compatibility to fit most smart phone under 6 inch in width.
The material of clamp is made of anti slip, anti scratch, and heat resistant premium rubber silicon. Not only it would allow the smart phone secured firmly on the holder, it also would protect device from slipping and scratch.
The rotatable mount conveniently offers a 360° turning angle in addition to tilting compatibility to adjust to the best viewing angle needed.
Built in high performance Qi charging compatibility eliminates the limitation of hard wired cable connection and enables direct wireless charging power to the cell phone to improve user experience.
It is compatible with all the smart phone which follows WPC Qi wireless charging standard receiver. With the smart vehicle wireless charger, mount your smart phone safely in your car and always keep your smart phone as charging mode while driving.

Contents

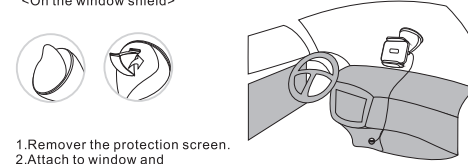


<Smart holder> <USB Cable> <Cigarette lighter charger> <Air vent mount>

<Fixing plate> <User guide>

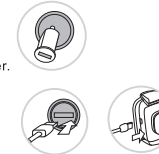
How to use

Installation
<On the window shield>



- 1.Remove the protection screen.
- 2.Attach to window and Pull down the lever.

- 3.Plug the cigarette lighter charger into power source
- 4.Connect the USB power cable between cigarette lighter charger and smart holder.



<On the dash board>



- 1.Remove the protection screen from the fixing plate.
- 2.Clean the place where you want to attach before attachment.
- 3.Attach the fixing plate on dash board.
It is highly recommended to leave it one more day to be fixed stable.
- 4.Place the smart holder on the fixing plate.
- 5.Pull down the fixing lever.

NOTE: This equipment has been tested and found to comply with the limits for a wireless power charger, pursuant to Part 18 of the FCC Rules. These limits are designed to provide reasonable protection against harmful interference in a residential installation. This equipment generates, uses and can radiate radio frequency energy and, if not installed and used in accordance with the instructions, may cause harmful interference to radio communications. However, there is no guarantee that interference will not occur in a particular installation. If this equipment does cause harmful interference to radio or television reception, which can be determined by turning the equipment off and on, the user is encouraged to try to correct the interference by one or more of the following measures:

- Reorient or relocate the receiving antenna.
- Increase the separation between the equipment and receiver.
- Connect the equipment into an outlet on a circuit different from that to which the receiver is connected.
- Consult the dealer or an experienced radio/TV technician for help.

CAUTION: Changes or modifications not expressly approved by the party responsible for compliance could void the user's authority to operate the product.

Cautions

1. Recommended to use qualified regular 5V/1A~2A cigarette lighter charger.
2. Please check wireless charger receiver position in your phone before using and place the receiver part of your phone on the center of smart holder
3. Please make sure that your phone is placed on valid charging area of smart holder, if the phone is out of valid charging area, the charging efficiency will be low and will be the reason of hot heating.
4. Make sure that USB Power cable is connected properly between smart holder and cigarette lighter charger.
5. It is highly recommend to use two hands to mount your phone when you use the smart holder on the dash board or air vent, otherwise the holder can be detached from the dashboard or air vent easily when you push the holding arm too strongly.
6. When you use the smart holder on dash board using fixing plate, please clean the attached area, and stay one more day to fix it stable after you attach the fixing plate on dash board.
7. Wireless charging generates heat by itself, It is highly recommended to use with air vent mount in hot summer and high temperature area.
8. Do not insert any metal material between smart holder and your phone, It can make hot heating and damage to your phone or smart holder.
9. Don't place too big and heavy device on smart holder. It is designed only for 3.5~6 inch size devices which support wireless charging.
10. It is only compatible with WPC Qi wireless charging standard.
11. Do not touch device with wet hand and do not connect the power on it in wet status.
12. Do not drop from high distance.
13. Do not place the device close to hot heating sources.
14. Do not allow children to play with smart holder because they could hurt themselves and others, damage it. Keep it apart out of the reach of small children.
15. Do not open the housing case of smart holder except qualified person.
16. Do not store or carry flammable liquids, gases, or explosive materials in the same compartment as smart holder, its parts, or accessories.
17. Remember to follow any special regulations in force in any area, and always switch it off whenever it is forbidden to use it, or when it may cause interferences or danger.
18. Any of damage by abnormal use of product except product defectiveness itself, it will all be responsible to the user.

<LED indicator>

Green: Power on
Blue: Charging
Red: Warning.

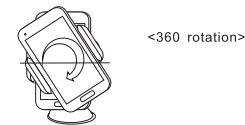
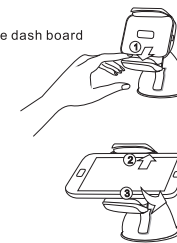


Specification

- Compatible with WPC Qi standard.
- 70% over power transport efficiency.
- Input 5V/1-2AAC adapter.
- Output 5V/1A
- Low induction under 50 mW.
- Foreign object detection (FOD)
- LED indication for working status.

<Caution>

When you placed the smart holder on the dash board or air vent, It is highly recommend to use two hands to mount your phone on the holder as shown right..
Otherwise the holder can be detached from the dashboard when you push the holding arm strongly.

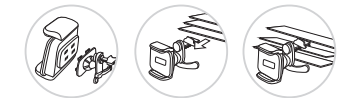


<Reverse view angle>

Push the front button and separate the upper part of suction mount.
Change the direction as you like.



<On the air vent>



- 1.Replace with the air vent mount.
- 2.Pull up the fixing lever and insert the hook into air hole
- 3.Hang the hook on the air hole direction control bar.

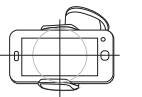
<Mounting the phone on the holder>

- 1.Insert one side of the phone into holder as shown right. (under upper arm).
- 2.Push the down part of the phone into the holder strongly



Please check where the receiver is located In your phone before using.
Every phone has different receiver position.

The receiver part of your phone should be aimed at the center of the holder. The phone can be placed on the center of holder between up/down arms automatically by the synchronous structure..



User Guide 1.0



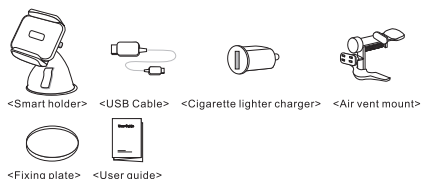
Vehicle wireless charger
Smart holder

- 1.Contents
- 2.Getting started
- 3.How to use
- 4.Specification
- 5.Cautions

Getting Started

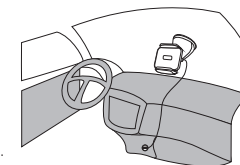
Smart holder is effective smart phone car holder as well as efficient wireless charger.
Listening music and using navigation with your smart phone in car, You can keep your smart phone as charging mode.
The retractable clamp comes with universal compatibility to fit most smart phone under 6 inch in width.
The material of clamp is made of anti slip, anti scratch, and heat resistant premium rubber silicon. Not only it would allow the smart phone secured firmly on the holder, it also would protect device from slipping and scratch.
The rotatable mount conveniently offers a 360° turning angle in addition to tilting compatibility to adjust to the best viewing angle needed.
Built in high performance Qi charging compatibility eliminates the limitation of hard wired cable connection and enables direct wireless charging power to the cell phone to improve user experience.
It is compatible with all the smart phone which follows WPC Qi wireless charging standard receiver. With the smart vehicle wireless charger, mount your smart phone safely in your car and always keep your smart phone as charging mode while driving.

Contents



How to use

Installation
<On the window shield>



- 1.Remove the protection screen.
- 2.Attach to window and Pull down the lever.

- 3.Plug the cigarette lighter charger into power source



- 4.Connect the USB power cable between cigarette lighter charger and smart holder.



<On the dash board>



- 1.Remove the protection screen from the fixing plate.
- 2.Clean the place where you want to attach before attachment.
- 3.Attach the fixing plate on dash board.
It is highly recommended to leave it one more day to be fixed stable.
- 4.Place the smart holder on the fixing plate.
- 5.Pull down the fixing lever.

NOTE: This equipment has been tested and found to comply with the limits for a wireless power charger, pursuant to Part 18 of the FCC Rules. These limits are designed to provide reasonable protection against harmful interference in a residential installation. This equipment generates, uses and can radiate radio frequency energy and, if not installed and used in accordance with the instructions, may cause harmful interference to radio communications. However, there is no guarantee that interference will not occur in a particular installation. If this equipment does cause harmful interference to radio or television reception, which can be determined by turning the equipment off and on, the user is encouraged to try to correct the interference by one or more of the following measures:

- Reorient or relocate the receiving antenna.
- Increase the separation between the equipment and receiver.
- Connect the equipment into an outlet on a circuit different from that to which the receiver is connected.
- Consult the dealer or an experienced radio/TV technician for help.

CAUTION: Changes or modifications not expressly approved by the party responsible for compliance could void the user's authority to operate the product.

Cautions

1. Recommended to use qualified regular 5V/1A~2A cigarette lighter charger.
2. Please check wireless charger receiver position in your phone before using and place the receiver part of your phone on the center of smart holder
3. Please make sure that your phone is placed on valid charging area of smart holder, if the phone is out of valid charging area, the charging efficiency will be low and will be the reason of hot heating.
4. Make sure that USB Power cable is connected properly between smart holder and cigarette lighter charger.
5. It is highly recommend to use two hands to mount your phone when you use the smart holder on the dash board or air vent, otherwise the holder can be detached from the dashboard or air vent easily when you push the holding arm too strongly.
6. When you use the smart holder on dash board using fixing plate, please clean the attached area, and stay one more day to fix it stable after you attach the fixing plate on dash board.
7. Wireless charging generates heat by itself, It is highly recommended to use with air vent mount in hot summer and high temperature area.
8. Do not insert any metal material between smart holder and your phone. It can make hot heating and damage to your phone or smart holder
9. Don't place too big and heavy device on smart holder. It is designed only for 3.5~6 inch size devices which support wireless charging.
10. It is only compatible with WPC Qi wireless charging standard.
11. Do not touch device with wet hand and do not connect the power on it in wet status.
12. Do not drop from high distance.
13. Do not place the device close to hot heating sources.
14. Do not allow children to play with smart holder because they could hurt themselves and others, damage it. Keep it apart out of the reach of small children.
15. Do not open the housing case of smart holder except qualified person.
16. Do not store or carry flammable liquids, gases, or explosive materials in the same compartment as smart holder, its parts, or accessories.
17. Remember to follow any special regulations in force in any area, and always switch it off whenever it is forbidden to use it, or when it may cause interferences or danger.
18. Any of damage by abnormal use of product except product defectiveness itself, it will all be responsible to the user.

<LED indicator>

Green: Power on
Blue: Charging
Red: Warning.

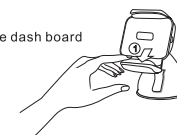


Specification

- Compatible with WPC Qi standard.
- 70% over power transport efficiency.
- Input 5V/1-2A AC adapter.
- Output 5V/1A
- Low induction under 50 mW.
- Foreign object detection (FOD)
- LED indication for working status.

<Caution>

When you placed the smart holder on the dash board or air vent, It is highly recommend to use two hands to mount your phone on the holder as shown right.. Otherwise the holder can be detached from the dashboard when you push the holding arm strongly.



<360 rotation>



<Reverse view angle>

Push the front button and separate the upper part of suction mount. Change the direction as you like.



<On the air vent>



- 1.Replace with the air vent mount.
- 2.Pull up the fixing lever and insert the hook into air hole
- 3.Hang the hook on the air hole direction control bar.

<Mounting the phone on the holder>

- 1.Insert one side of the phone into holder as shown right. (under upper arm).
- 2.Push the down part of the phone into the holder strongly



Please check where the receiver is located In your phone before using. Every phone has different receiver position.

The receiver part of your phone should be aimed at the center of the holder. The phone can be placed on the center of holder between up/down arms automatically by the synchronous structure..

