



**PHOTOGRAPHS OF THE INTERIOR OF A  
DIGITAL TRANSMISSION SYSTEM  
BRAND PLUGWISE, MODEL STEALTH  
AND MODEL STING.**

FCC listed : 90828  
Industry Canada : 2932G-2  
VCCI Registered : R-1518, C-1598  
R&TTE, LVD, EMC Notified Body : 1856

**TÜV Rheinland EPS B.V.**  
**P.O. Box 37**  
**9350 AA Leek (NL)**  
**Eiberkamp 10**  
**9351 VT Leek (NL)**

Telephone: +31 594 505005  
Telefax: +31 594 504804

Internet: [www.tuv-eps.com](http://www.tuv-eps.com)  
E-mail: [info@tuv-eps.com](mailto:info@tuv-eps.com)



**Description of test item**

Test item : Digital Transmission System (DTS)  
Manufacturer : Applied Micro Electronics "AME" BV  
Brand : Plugwise  
Model(s) : Stealth and Sting  
Serial number(s) : --  
Revision : n.a.  
Receipt date : April 20, 2012

**Applicant information**

Applicant's representative : Mr. R.van Rooijen  
Company : Plugwise B.V.  
Address : Wattstraat 56  
Postal code : 2171TR  
City : Sassenheim  
Country : The Netherlands  
Telephone number : +31 252433070  
Telefax number : +31 252433079

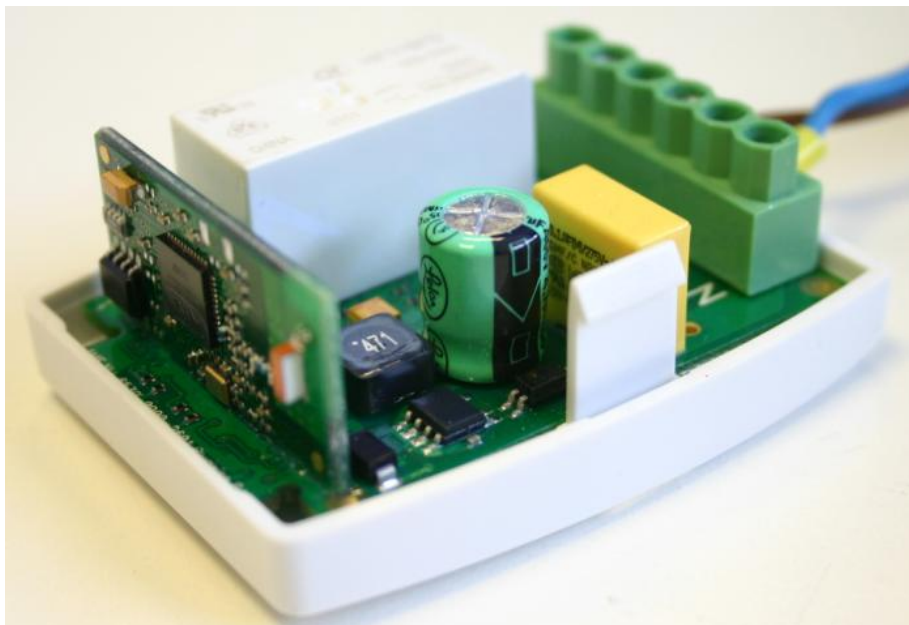


## **Table of contents**

1.1	OVERVIEW, OPENED EUT.....	4
1.2	OPENED EUT OVERVIEW, PCB REMOVED FROM HOUSING.....	5
1.3	MAIN PCB.....	6
1.3.1	<i>Main PCB front view.....</i>	6
1.3.2	<i>Main PCB rear view.....</i>	7
1.3.3	<i>ZigBee PCB view, component side.....</i>	8
1.3.4	<i>ZigBee PCB view, back side.....</i>	8
1.4	INTERNAL VIEW MODEL STING.....	9



### 1.1 Overview, opened EUT.





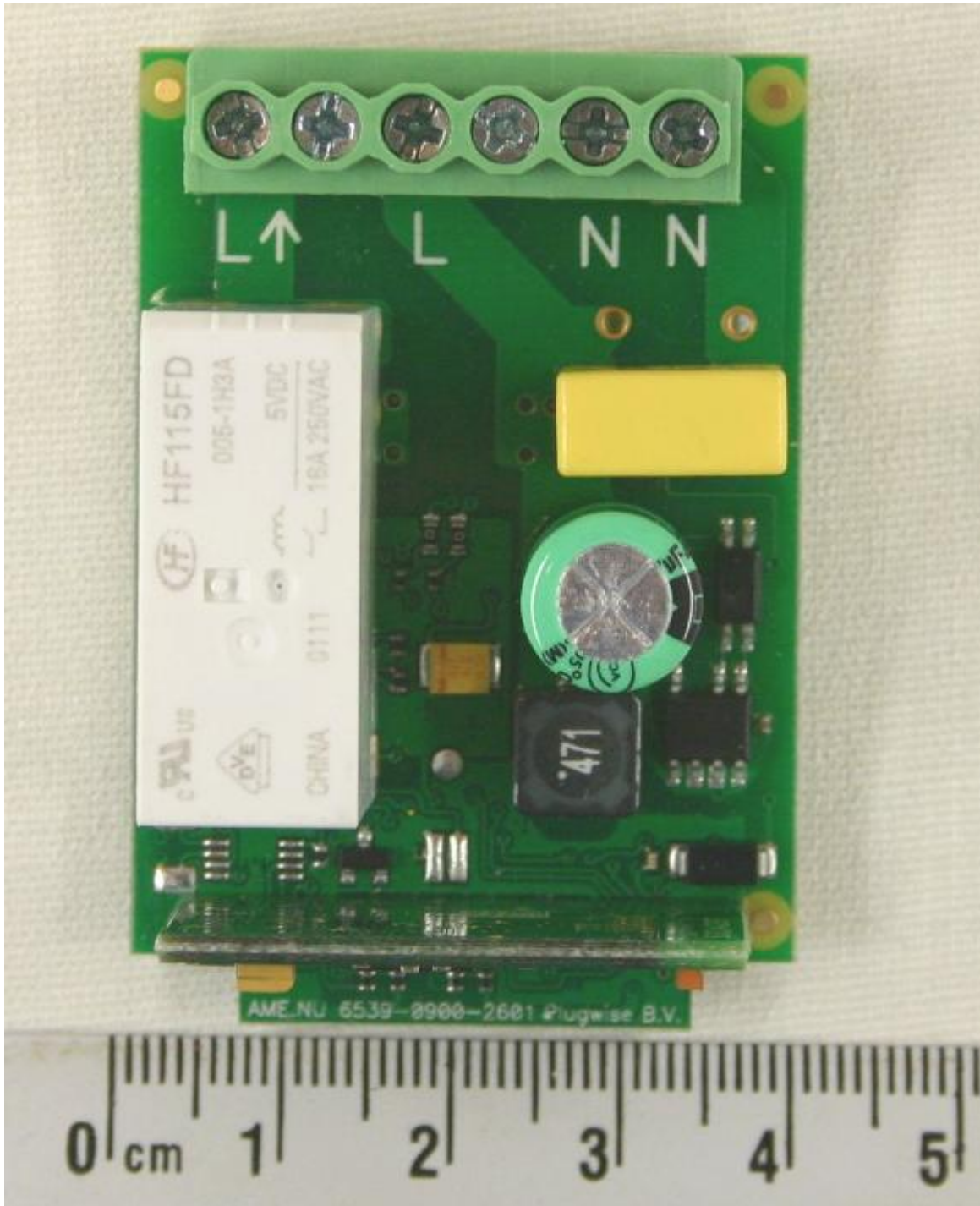
## 1.2 Opened EUT overview, PCB removed from housing





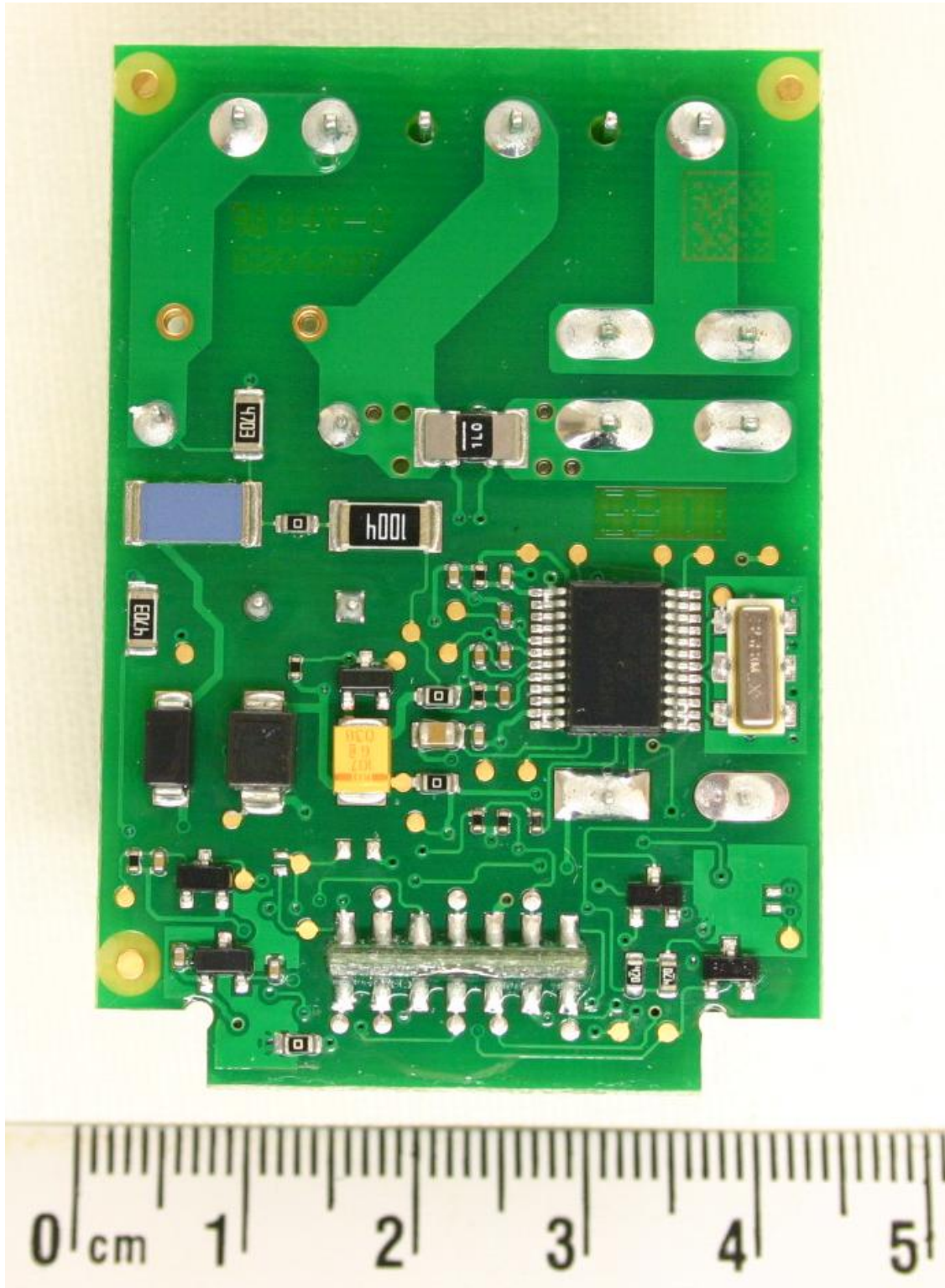
### 1.3 Main PCB

#### 1.3.1 Main PCB front view



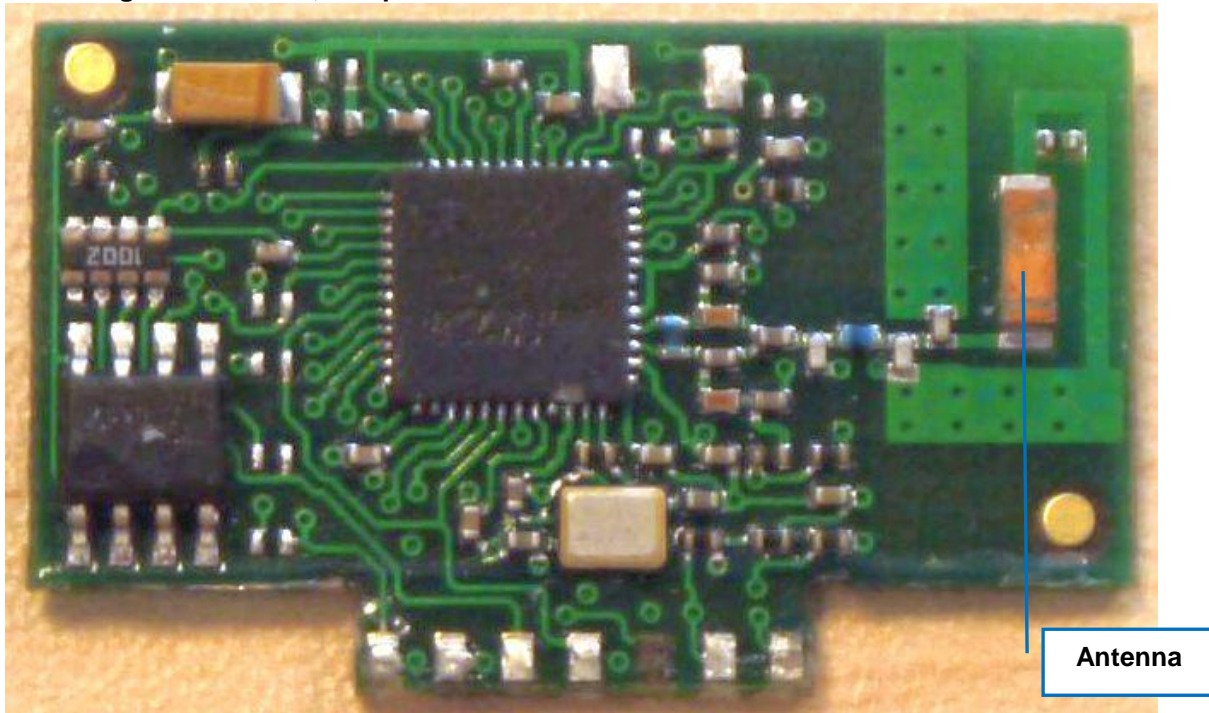


1.3.2 Main PCB rear view

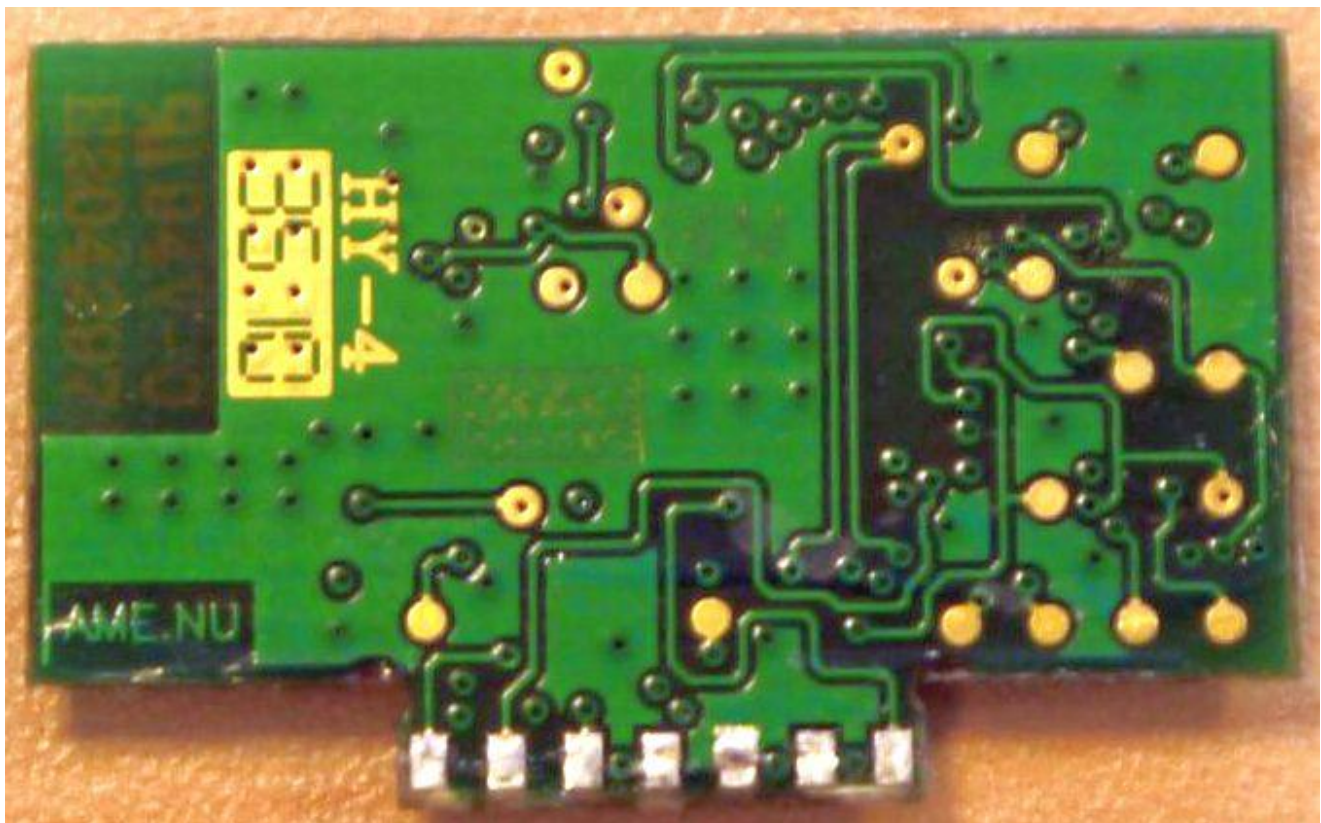




1.3.3 ZigBee PCB view, component side



1.3.4 ZigBee PCB view, back side







## 1.4 Internal view Model Sting

The Model Sting is basically the same as model Stealth with only added power leads.

