

**PHOTOGRAPHS OF THE TESTSETUP OF A
DIGITAL TRANSMISSION SYSTEM
BRAND PLUGWISE, MODEL STEALTH+.**

FCC listed : 90828
Industry Canada : 2932G-2
VCCI Registered : R-1518, C-1598
R&TTE, LVD, EMC Notified Body : 1856

TÜV Rheinland EPS B.V.
Eiberkamp 10
9351VT Leek
The Netherlands

Telephone: +31 594 505005
Telefax: +31 594 504804
Internet: www.tuv.com/nl
E-mail: info@tuv-eps.com



Description of test item

Test item : Digital Transmission System (DTS)
Manufacturer : Applied Micro Electronics "AME" BV
Brand : Plugwise
Model : Stealth+
Serial number : --
FCC ID : ZB9-STEALTH-PLUS
IC : N.A.

Applicant information

Applicant's representative : Mr. R.van Rooijen
Company : Plugwise B.V.
Address : Wattstraat 56
Postal code : 2171TR
City : Sassenheim
Country : The Netherlands
Telephone number : +31 252433070
Telefax number : +31 252433079

Report written by : R. van der Meer

Report date : September 17, 2012



Table of contents

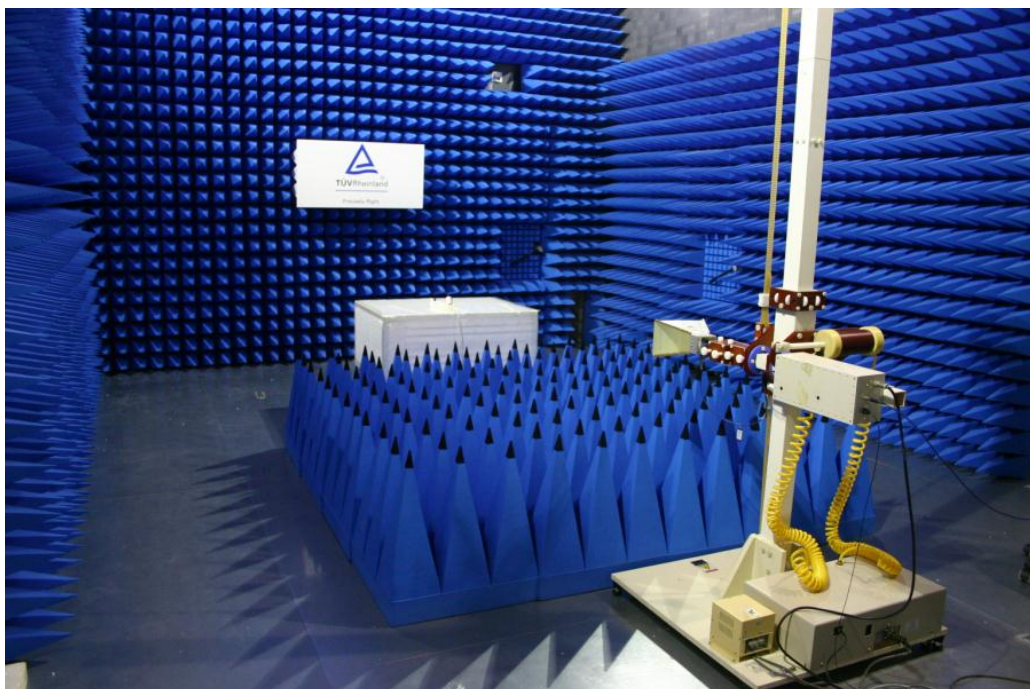
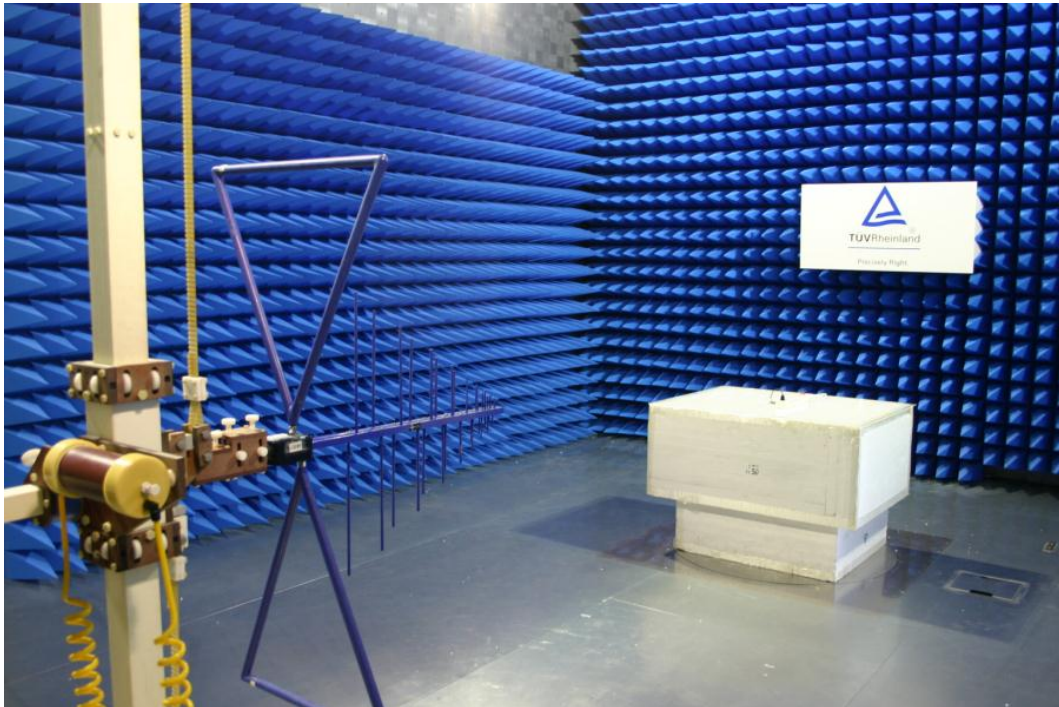
1	PHOTOGRAPHS OF THE TESTSETUP	4
1.1	RADIATED EMISSIONS	4
1.1.1	<i>Radiated emissions setup</i>	4
1.1.2	<i>Radiated emissions setup detail</i>	5
1.2	CONDUCTED EMISSIONS	7
1.2.1	<i>Conducted emissions testsetup overview</i>	7



1 Photographs of the testsetup.

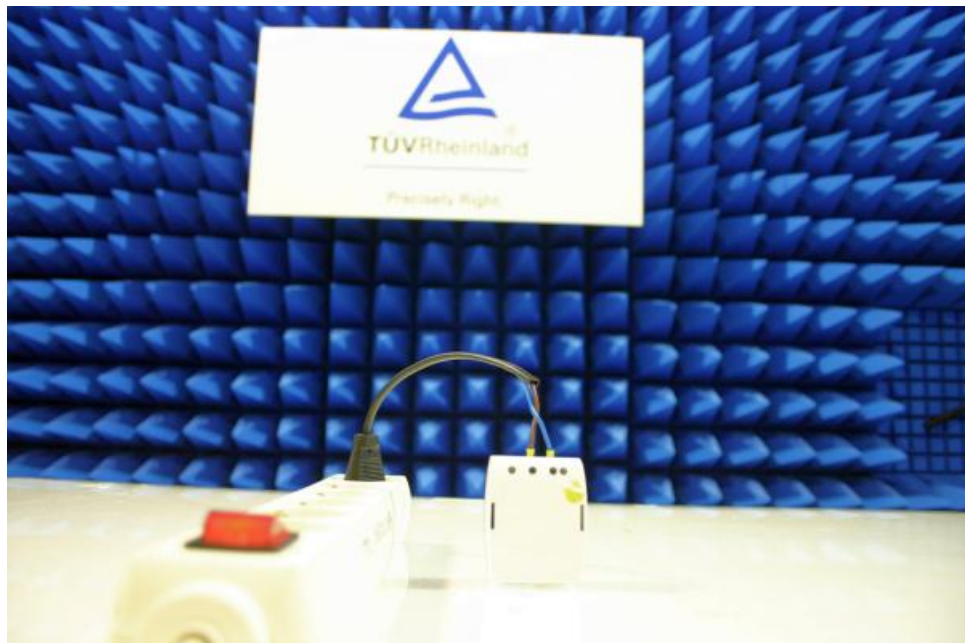
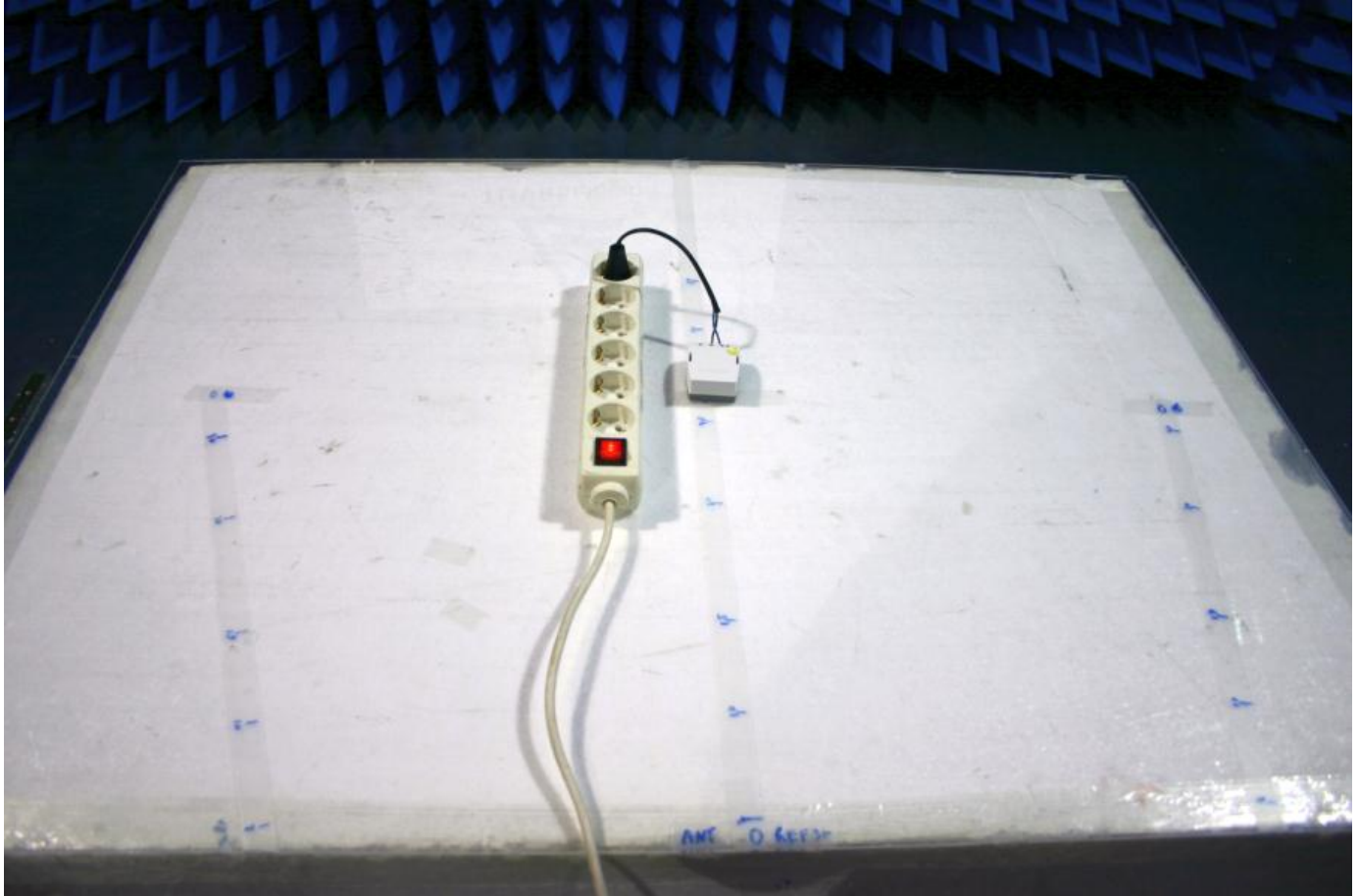
1.1 Radiated emissions.

1.1.1 Radiated emissions setup



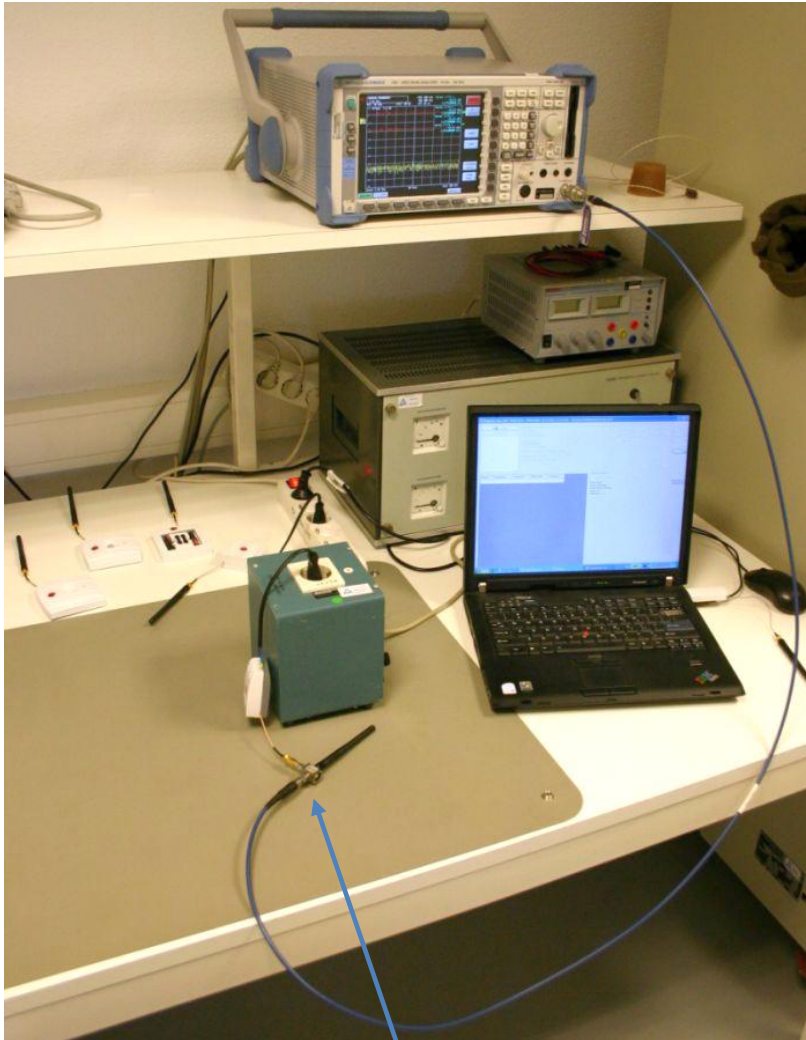


1.1.2 Radiated emissions setup detail

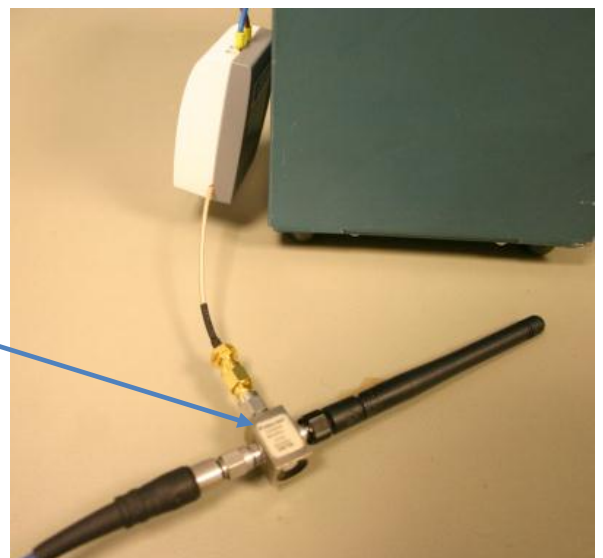




1.2 Conducted tests



A Power divider is used to be able to connect the EUT's RF output to a Spectrum Analyzer and to connect to an antenna. Required for the EUT to stay connected to the Plugwise network. The EUT must 'see' the network in order to keep transmitting.





1.3 Conducted emissions

1.3.1 Conducted emissions testsetup overview



Photo . Basic test set-up conducted emission

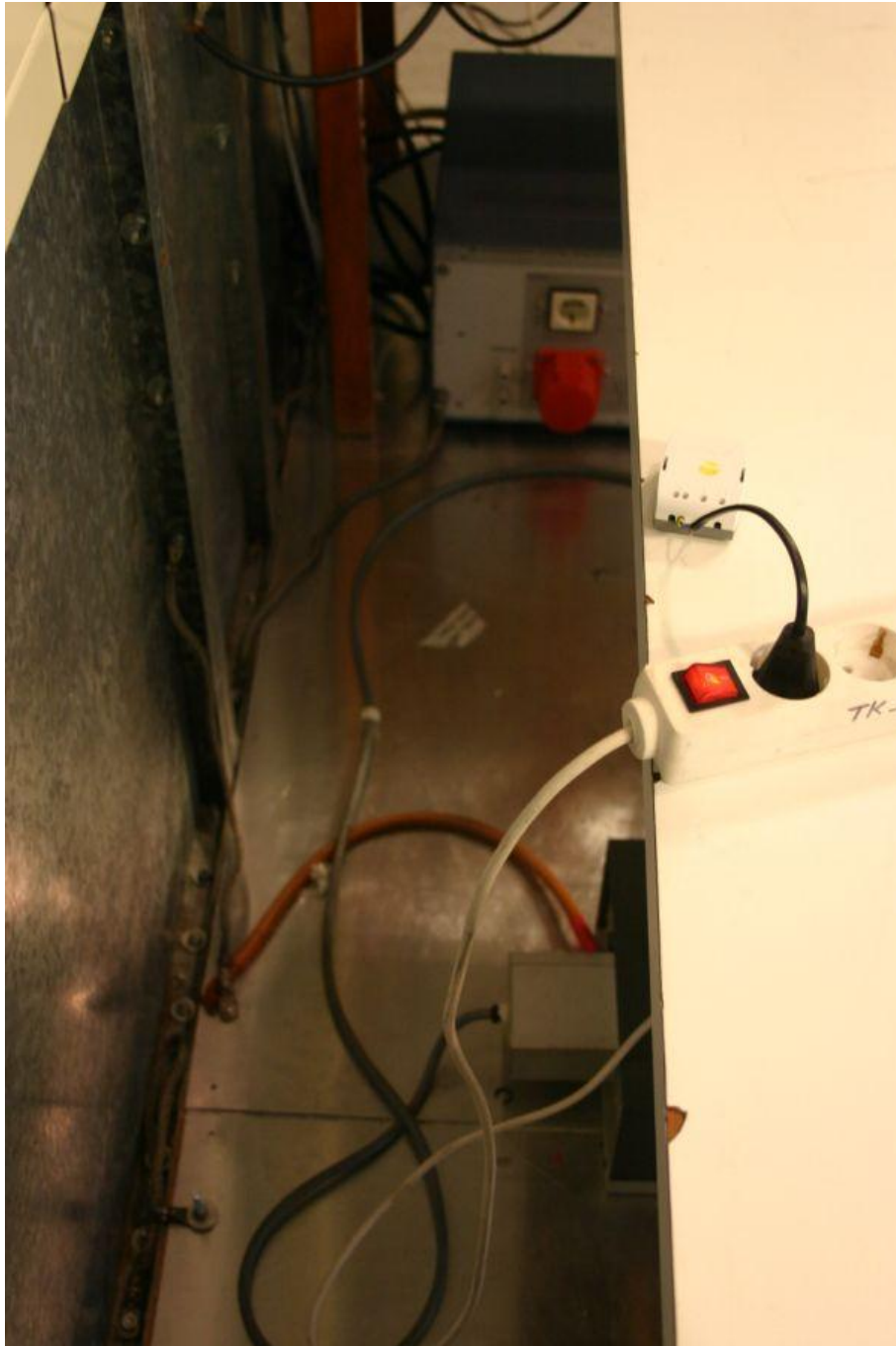


Photo . Detail test set-up conducted emission