



**PHOTOGRAPHS OF THE INTERIOR OF A  
ENERGY MANAGEMENT SYSTEM, ZIGBEE DEVICE  
BRAND PLUGWISE, MODEL CIRCLE+.**

FCC listed : 90828  
Industry Canada : 2932G-1  
VCCI Registered : R-1518, C-1598  
R&TTE, LVD, EMC Notified Body : 1856

**TÜV Rheinland EPS B.V.**  
P.O. Box 15  
9822 ZG Niekerk (NL)  
Smidshornerweg 18  
9822 TL Niekerk (NL)

Telephone: +31 594 505005  
Telefax: +31 594 504804

Internet: [www.tuv-eps.com](http://www.tuv-eps.com)  
E-mail: [info@tuv-eps.com](mailto:info@tuv-eps.com)



**Description of test item**

Test item : Energy Management System, ZigBee device  
Manufacturer : Applied Micro Electronics "AME" BV  
Brand : Plugwise  
Model(s) : Circle+  
Serial number(s) : --  
MAC : 000D6F0000B817D0  
Revision : n.a.  
Receipt date : June 01, 2011

**Applicant information**

Applicant's representative : Mr. E. Vroege  
Company : Plugwise B.V.  
Address : Wattstraat 56  
Postal code : 2171TR  
City : Sassenheim  
Country : The Netherlands  
Telephone number : +31 252433070  
Telefax number : +31 252433079

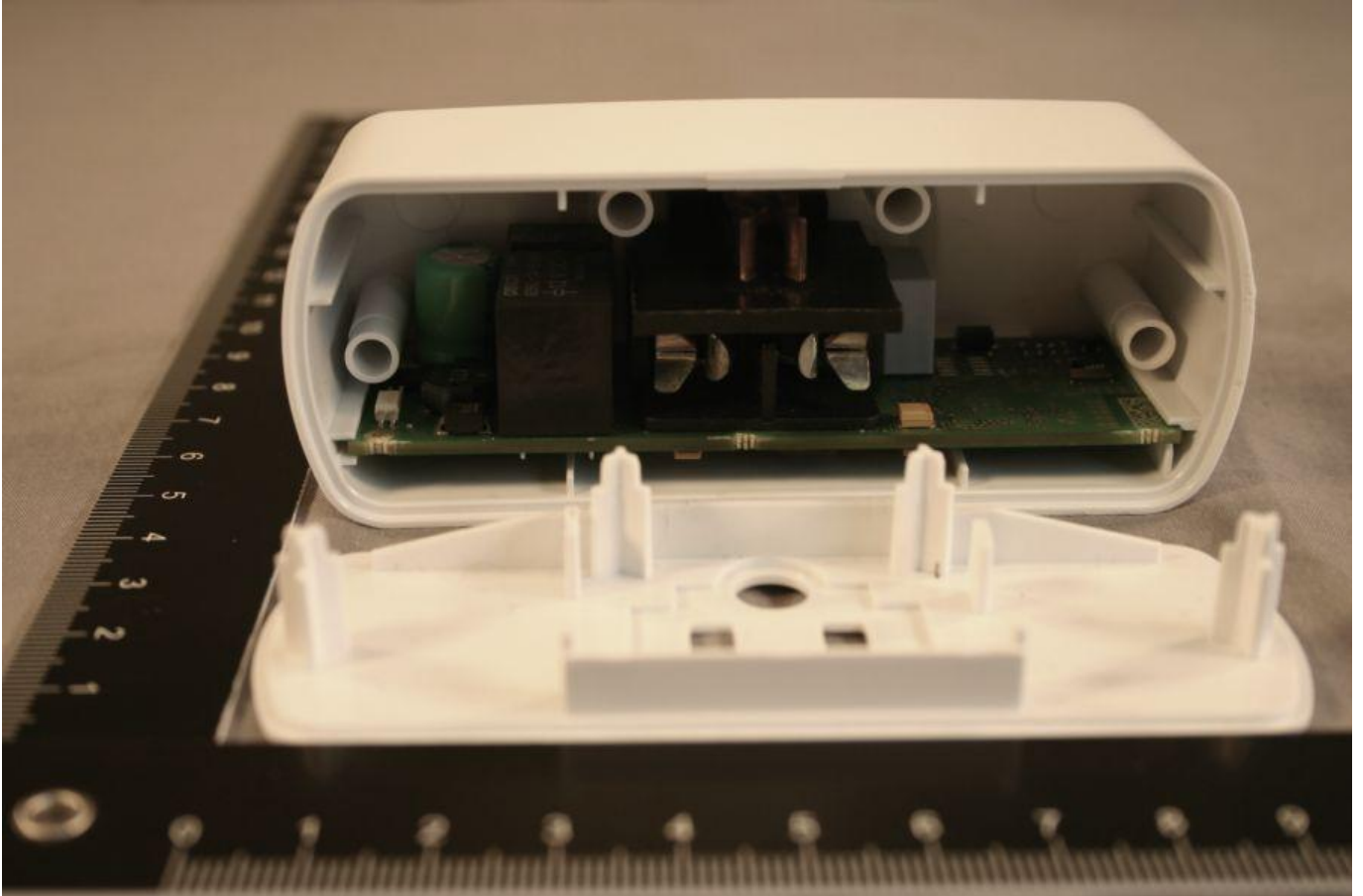


## **Table of contents**

1.1	OVERVIEW, OPENED EUT.....	4
1.2	OPENED EUT OVERVIEW .....	5
1.3	PCB.....	6
1.3.1	PCB front view.....	6
1.3.2	PCB rear view .....	7

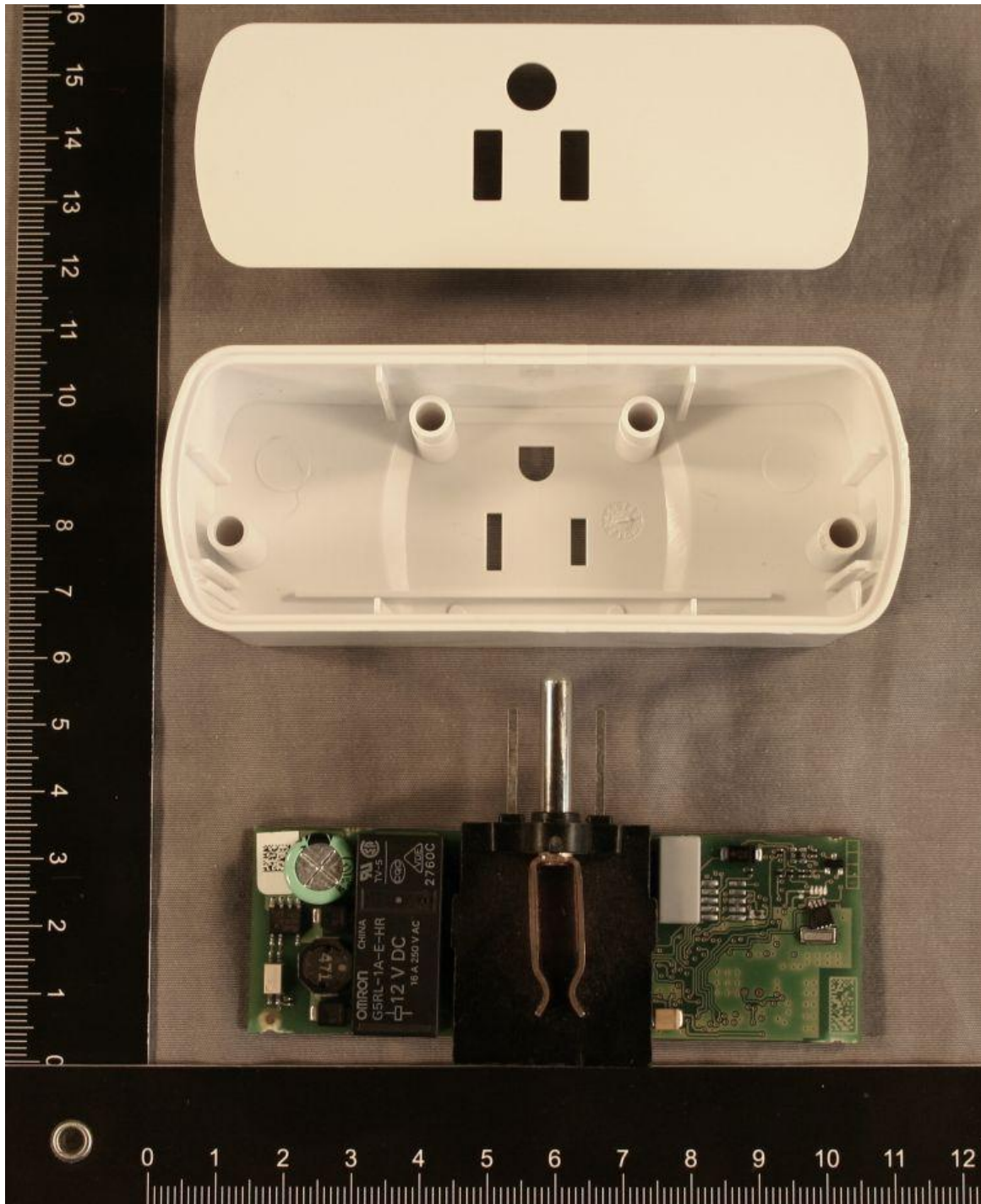


## 1.1 Overview, opened EUT.





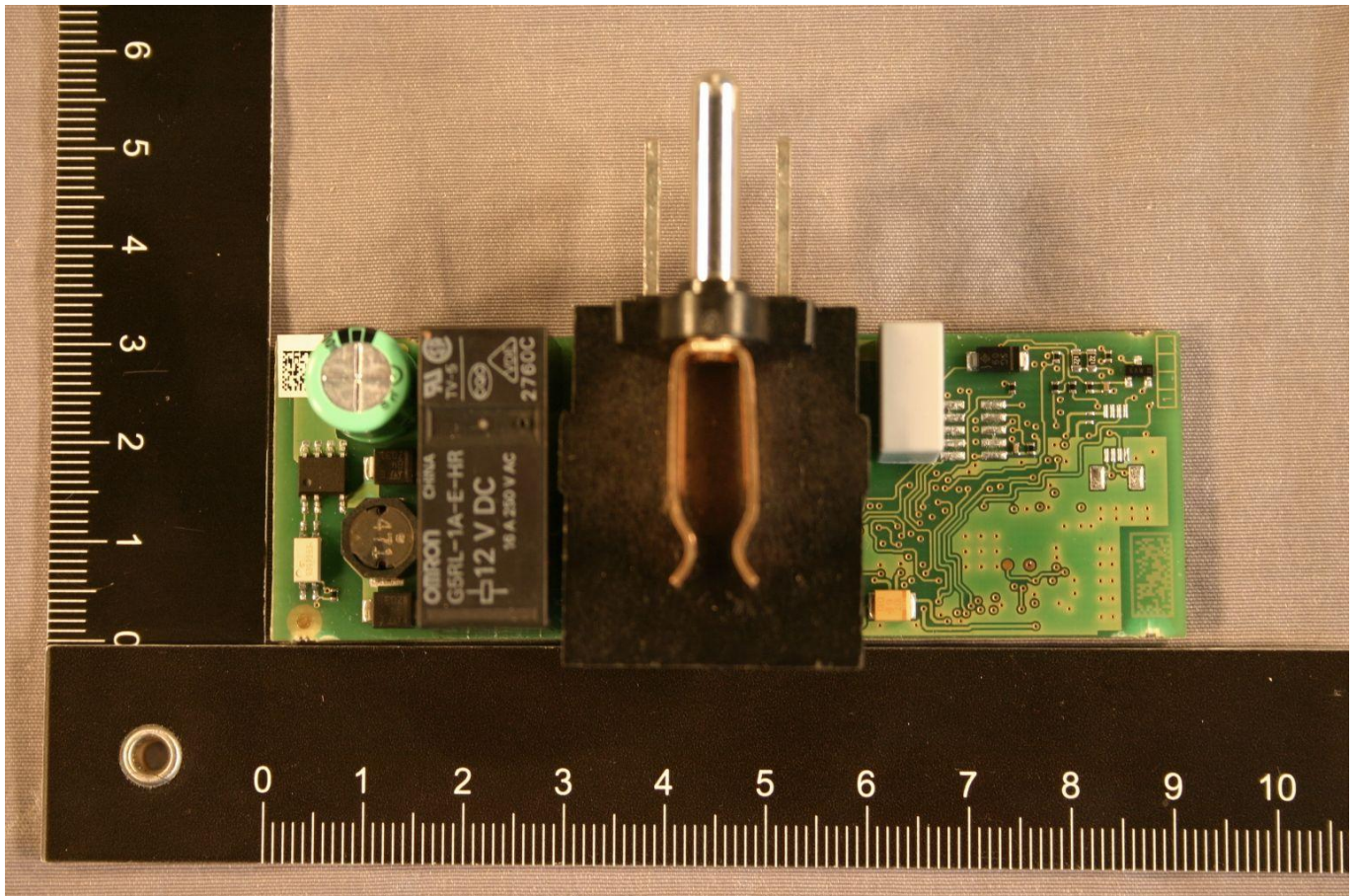
## 1.2 Opened EUT overview





### 1.3 PCB

#### 1.3.1 PCB front view





### 1.3.2 PCB rear view

