

CC2650 SensorTag Quick Start Guide

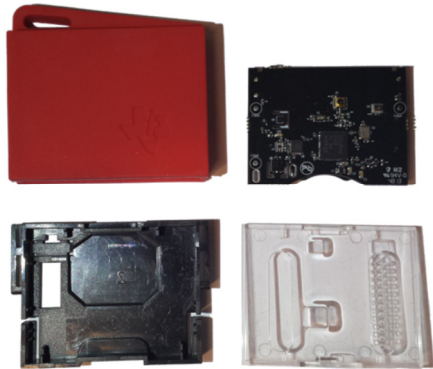


Opening the Box and Using the SensorTag

The SensorTag simplifies development of *Bluetooth* low energy sensor applications. It allows app developers to quickly and easily write smart phone apps for *Bluetooth* low energy accessories without any embedded hardware or software development.

www.ti.com/sensortag

1. Kit Contents



- 1 x CC2650 SensorTag with enclosure
- 1 x CR2032 Battery
- Quick Start Guide

The RF board in this kit is FCC and IC certified and tested/complies with ETSI/R&TTE over temperature from 0 to +35°C¹. The RF board has an integrated PCB antenna.

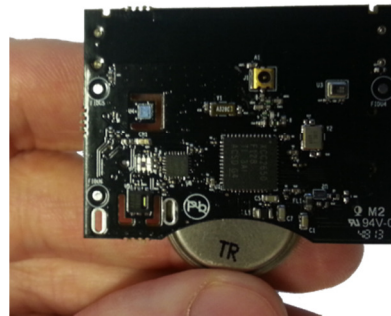
FCC/IC Regulatory Compliance
 FCC Part 15 Class A Compliant
 IC ICES-003 Class A Compliant



Caution! Dispose the battery properly and keep out of reach of children. If swallowed, contact a physician immediately.

2. Assembly of the SensorTag

Insert the battery² in the battery connector and place the printed circuit board in the black plastic cover with the battery facing down.

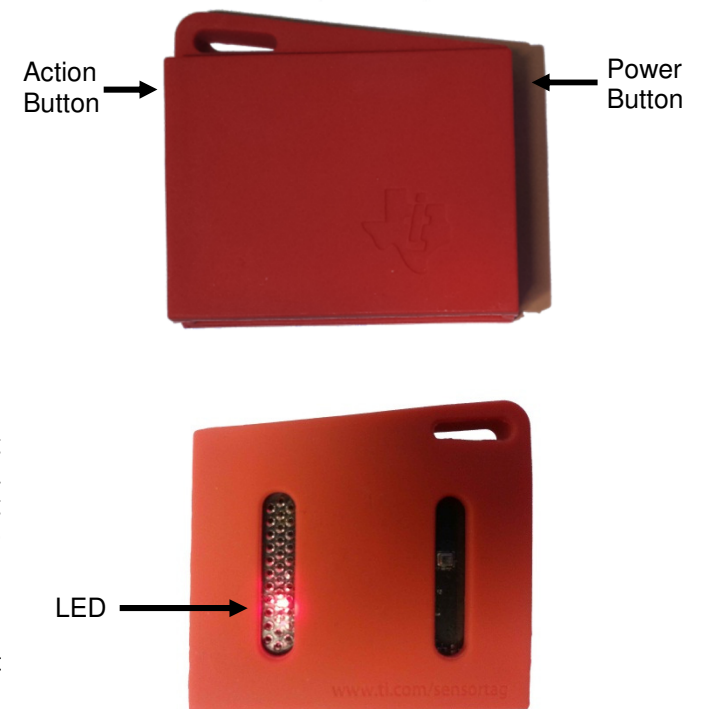


Note that when inserting the battery for the first time, the PCB contact point surface may have a thin layer of solder residue that can prevent contact with the battery. Remove and insert the battery a few times to power the SensorTag.



Caution! The kit contains ESD sensitive components. Handle with care to prevent permanent damage.

Add the transparent plastic cover to close the inner hard plastic pieces. Complete the assembly of the SensorTag by adding the red plastic cover.



3. Sensors

The SensorTag is fitted with several sensors and all sensors are chosen to be small, energy efficient and low cost surface mount devices. The main communication interface with the sensors are two separate I2C interface, one for the low power sensors and one for high power sensors (accelerometer/gyroscope). To minimize total current consumption all sensors are by default disabled and they are in sleep mode between measurements. Each sensor can be enabled and read individually. The SensorTag includes the following sensors:

- IR Temperature Sensor (TMP006) from Texas Instruments, <http://www.ti.com/product/tmp006>
- Ambient Light Sensor (OPT3001) from Texas Instruments
- Humidity Sensor (SHT21) from Sensirion, <http://www.sensirion.com/en/products/humidity-temperature/humidity-sensor-sht21/>
- Pressure Sensor (BMP280) from Bosch,
- Accelerometer/Gyroscope (MPU-6500) from Invensense,
- Reed Switch (MK24) from Meder
- Microphone (SPH0641) from Knowles
- Buzzer (HCS0503A) from Changzhou Tianyin Electrical Appliance Co.

4. Downloading the SensorTag app

The SensorTag can communicate with any *Bluetooth* 4.0 enabled devices, for instance a smart phone or a tablet.

The *Bluetooth* SensorTag app is supported for both *Bluetooth* 4.0 enabled iOS devices and *Bluetooth* 4.0 supported Android devices running Android 4.3.

Download the TI *Bluetooth* iOS SensorTag app from Apple's App Store:



Or search for SensorTag on App Store.

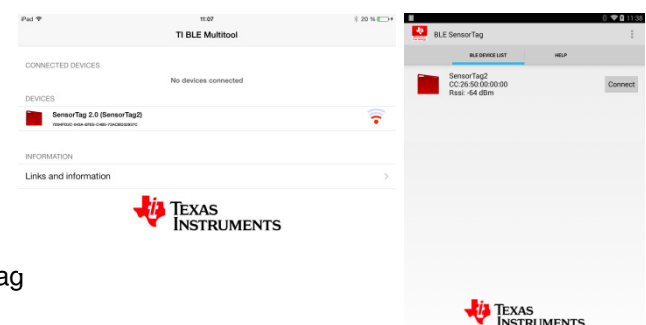
Download the TI Bluetooth Android SensorTag app from <http://www.ti.com/tool/sensortag-sw>:



5. Connecting to a Bluetooth 4.0 enabled device

For a *Bluetooth* 4.0 device to communicate with the SensorTag, *Bluetooth* needs to be turned on and the SensorTag needs to be advertising. The SensorTag can enable and disable advertising by pushing the power button (see picture above). When the SensorTag is advertising the red LED will blink.

Start the TI *Bluetooth* SensorTag app. When the app is launched it will search for all *Bluetooth* low energy devices in the area. Enable advertising by clicking on the power button. The SensorTag icon should appear indicating a successful connection.



If no *Bluetooth* 4.0 devices are detected by the SensorTag within 2 minutes, advertising will stop and the SensorTag will go back to sleep. To reactivate advertising and turning on the SensorTag press the power button once more.

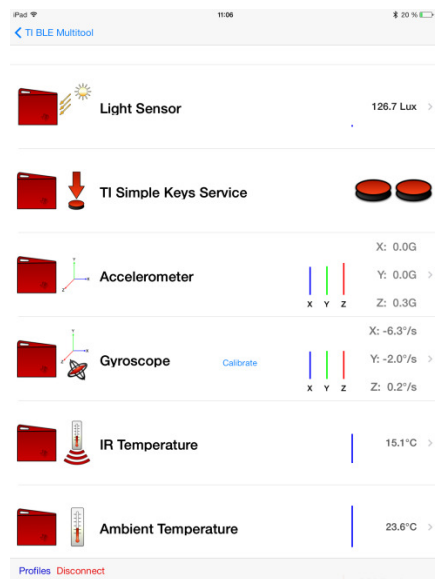
¹ Operating temperature for CC2650 is -40° to 85°C

² Maximum input voltage is 3.6V

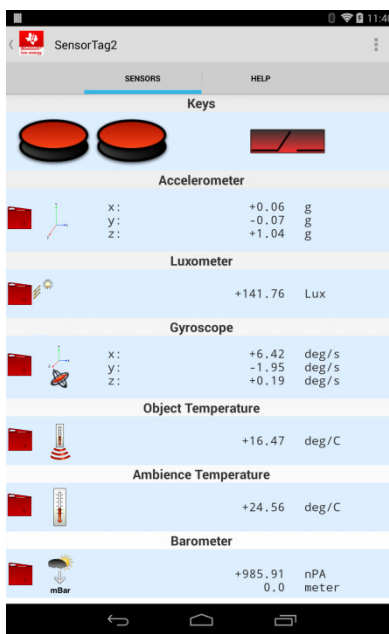
6. Use the SensorTag app

The TI *Bluetooth* SensorTag app allows you to create your “own” app by selecting the different sensors you want to use.

When connected to the SensorTag click on the SensorTag tab to see readings from the sensors.



Turn on and off the sensors by selecting ‘Profiles’ in the bottom, left corner on iOS or click on ‘Services’ on Android. In the Profiles section on iOS it is possible to adjust the sensor data collection interval by moving the sliding bars, and select which axis to display for the multi-axis sensors. When you click ‘Back’ the TI *Bluetooth* SensorTag app will display the selected sensor data with the selected data interval.



Enable sensor information data by clicking the different sensors, this will also allow for a graph view of the sensor readings. The data collected in the graph view can then be sent to an e-mail address by clicking on the icon in the bottom left corner.

7. Using the app as an attribute and service explorer

You can use the *Bluetooth* SensorTag iOS app to read the services and attributes of any *Bluetooth* low energy enabled device.

Connect the *Bluetooth* low energy device, and make sure that the *Bluetooth* low energy device is advertising prior to connecting.

When the device is seen in the available device list select ‘Advanced Mode’ in the bottom left corner. In advanced mode an RSSI indicator is available and by clicking on the device it will connect to the iOS device. If you then click and hold on the device name you will be able to; Show Profiles, Show Services & Characteristics, Show Advertisement data or disconnect.

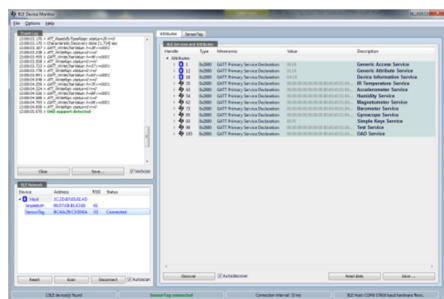
Select **Show Services & Characteristics** to view the services and characteristics of the *Bluetooth* low energy device.

When Show Services & Characteristics is selected, click on the arrow next to the different services to see the associated characteristics.

For Android an attribute and service discovery explorer is provided as a standalone app, which can be downloaded at Google Play.

8. Using the SensorTag with the BLE Device Monitor for Windows

Download and install TI’s BLE Device Monitor from: www.ti.com/sensortag. Please note that you also need a CC2540 USB dongle to use the BLE Device monitor.



The BLE Device Monitor allows you to discover, read and alter attributes on any BLE device. More detailed information about the BLE Device Monitor can be found at: www.ti.com/sensortag

Note that BLE Device Monitor is currently only supported on Windows 7/XP.

9. Supported platforms

To use the SensorTag a *Bluetooth* 4.0 device is required and the API of the device must support the *Bluetooth* low energy API. Currently the following devices are supported:

- Android devices (supporting *Bluetooth* 4.0) running Android 4.3 or newer.
- iPhone 4S or newer
- iPad (3) or newer and iPad mini
- iPod Touch (5th generation)
- MacBook Air (2011 model and newer)
- MacBook Pro (2012 model and newer)
- Windows 7/XP PC with CC2540 USB dongle connected using BLE Device Monitor. Part of TI BLE stack v1.30 and newer.

10. Next steps

1. Learn more about the SensorTag and the BLE Device Monitor at: www.ti.com/sensortag
2. Meet other *Bluetooth* low energy developers and get technical support at: http://e2e.ti.com/support/low_power_rf/f/538.aspx

Make sure to subscribe to the Wireless Connectivity eNewsletter. Sign up today to get the latest information on all TI wireless connectivity devices! The Wireless Connectivity eNewsletter keeps you up to date on new software and hardware releases, developers’ news, and other news and events associated with TI’s wireless connectivity solutions.



EVALUATION BOARD/KIT/MODULE (EVM) ADDITIONAL TERMS

Texas Instruments (TI) provides the enclosed Evaluation Board/Kit/Module (EVM) under the following conditions:

The user assumes all responsibility and liability for proper and safe handling of the goods. Further, the user indemnifies TI from all claims arising from the handling or use of the goods.

Should this evaluation board/kit not meet the specifications indicated in the User's Guide, the board/kit may be returned within 30 days from the date of delivery for a full refund. THE FOREGOING LIMITED WARRANTY IS THE EXCLUSIVE WARRANTY MADE BY SELLER TO BUYER AND IS IN LIEU OF ALL OTHER WARRANTIES, EXPRESSED, IMPLIED, OR STATUTORY, INCLUDING ANY WARRANTY OF MERCHANTABILITY OR FITNESS FOR ANY PARTICULAR PURPOSE. EXCEPT TO THE EXTENT OF THE INDEMNITY SET FORTH ABOVE, NEITHER PARTY SHALL BE LIABLE TO THE OTHER FOR ANY INDIRECT, SPECIAL, INCIDENTAL, OR CONSEQUENTIAL DAMAGES.

Please read the User's Guide and, specifically, the Warnings and Restrictions notice in the User's Guide prior to handling the product. This notice contains important safety information about temperatures and voltages. For additional information on TI's environmental and/or safety programs, please visit www.ti.com/esh or contact TI.

No license is granted under any patent right or other intellectual property right of TI covering or relating to any machine, process, or combination in which such TI products or services might be or are used. TI currently deals with a variety of customers for products, and therefore our arrangement with the user is not exclusive. TI assumes no liability for applications assistance, customer product design, software performance, or infringement of patents or services described herein.

REGULATORY COMPLIANCE INFORMATION

As noted in the EVM User's Guide and/or EVM itself, this EVM and/or accompanying hardware may or may not be subject to the Federal Communications Commission (FCC) and Industry Canada (IC) rules.

For EVMs **not** subject to the above rules, this evaluation board/kit/module is intended for use for ENGINEERING DEVELOPMENT, DEMONSTRATION OR EVALUATION PURPOSES ONLY and is not considered by TI to be a finished end product fit for general consumer use. It generates, uses, and can radiate radio frequency energy and has not been tested for compliance with the limits of computing devices pursuant to part 15 of FCC or ICES-003 rules, which are designed to provide reasonable protection against radio frequency interference. Operation of the equipment may cause interference with radio communications, in which case the user at his own expense will be required to take whatever measures may be required to correct this interference.

General Statement for EVMs including a radio

User Power/Frequency Use Obligations: This radio is intended for development/professional use only in legally allocated frequency and power limits. Any use of radio frequencies and/or power availability of this EVM and its development application(s) must comply with local laws governing radio spectrum allocation and power limits for this evaluation module. It is the user's sole responsibility to only operate this radio in legally acceptable frequency space and within legally mandated power limitations. Any exceptions to this are strictly prohibited and unauthorized by Texas Instruments unless user has obtained appropriate experimental/development licenses from local regulatory authorities, which is responsibility of user including its acceptable authorization.

For EVMs annotated as FCC – FEDERAL COMMUNICATIONS COMMISSION Part 15 Compliant

Caution

This device complies with part 15 of the FCC Rules. Operation is subject to the following two conditions: (1) This device may not cause harmful interference, and (2) this device must accept any interference received, including interference that may cause undesired operation.

Changes or modifications not expressly approved by the party responsible for compliance could void the user's authority to operate the equipment.

FCC Interference Statement for Class A EVM devices

This equipment has been tested and found to comply with the limits for a Class A digital device, pursuant to part 15 of the FCC Rules. These limits are designed to provide reasonable protection against harmful interference when the equipment is operated in a commercial environment. This equipment generates, uses, and can radiate radio frequency energy and, if not installed and used in accordance with the instruction manual, may cause harmful interference to radio communications. Operation of this equipment in a residential area is likely to cause harmful interference in which case the user will be required to correct the interference at his own expense.

FCC Interference Statement for Class B EVM devices

This equipment has been tested and found to comply with the limits for a Class B digital device, pursuant to part 15 of the FCC Rules. These limits are designed to provide reasonable protection against harmful interference in a residential installation. This equipment generates, uses and can radiate radio frequency energy and, if not installed and used in accordance with the instructions, may cause harmful interference to radio communications. However, there is no guarantee that interference will not occur in a particular installation. If this equipment does cause harmful interference to radio or television reception, which can be determined by turning the equipment off and on, the user is encouraged to try to correct the interference by one or more of the following measures:

- Reorient or relocate the receiving antenna.
- Increase the separation between the equipment and receiver.
- Connect the equipment into an outlet on a circuit different from that to which the receiver is connected.
- Consult the dealer or an experienced radio/TV technician for help.

For EVMs annotated as IC – INDUSTRY CANADA Compliant

This Class A or B digital apparatus complies with Canadian ICES-003.

Changes or modifications not expressly approved by the party responsible for compliance could void the user's authority to operate the equipment.

Concerning EVMs including radio transmitters

This device complies with Industry Canada licence-exempt RSS standard(s). Operation is subject to the following two conditions: (1) this device may not cause interference, and (2) this device must accept any interference, including interference that may cause undesired operation of the device.

Concerning EVMs including detachable antennas

Under Industry Canada regulations, this radio transmitter may only operate using an antenna of a type and maximum (or lesser) gain approved for the transmitter by Industry Canada. To reduce potential radio interference to other users, the antenna type and its gain should be so chosen that the equivalent isotropically radiated power (e.i.r.p.) is not more than that necessary for successful communication.

This radio transmitter has been approved by Industry Canada to operate with the antenna types listed in the user guide with the maximum permissible gain and required antenna impedance for each antenna type indicated. Antenna types not included in this list, having a gain greater than the maximum gain indicated for that type, are strictly prohibited for use with this device.

Cet appareil numérique de la classe A ou B est conforme à la norme NMB-003 du Canada.

Les changements ou les modifications pas expressément approuvés par la partie responsable de la conformité ont pu vider l'autorité de l'utilisateur pour actionner l'équipement.

Concernant les EVMs avec appareils radio

Le présent appareil est conforme aux CNR d'Industrie Canada applicables aux appareils radio exempts de licence. L'exploitation est autorisée aux deux conditions suivantes : (1) l'appareil ne doit pas produire de brouillage, et (2) l'utilisateur de l'appareil doit accepter tout brouillage radioélectrique subi, même si le brouillage est susceptible d'en compromettre le fonctionnement.

Concernant les EVMs avec antennes détachables

Conformément à la réglementation d'Industrie Canada, le présent émetteur radio peut fonctionner avec une antenne d'un type et d'un gain maximal (ou inférieur) approuvé pour l'émetteur par Industrie Canada. Dans le but de réduire les risques de brouillage radioélectrique à l'intention des autres utilisateurs, il faut choisir le type d'antenne et son gain de sorte que la puissance isotrope rayonnée équivalente (p.i.r.e.) ne dépasse pas l'intensité nécessaire à l'établissement d'une communication satisfaisante.

Le présent émetteur radio a été approuvé par Industrie Canada pour fonctionner avec les types d'antenne énumérés dans le manuel d'usage et ayant un gain admissible maximal et l'impédance requise pour chaque type d'antenne. Les types d'antenne non inclus dans cette liste, ou dont le gain est supérieur au gain maximal indiqué, sont strictement interdits pour l'exploitation de l'émetteur.

【Important Notice for Users of EVMs for RF Products in Japan】

This development kit is NOT certified as Confirming to Technical Regulations of Radio Law of Japan

If you use this product in Japan, you are required by Radio Law of Japan to follow the instructions below with respect to this product:

1. Use this product in a shielded room or any other test facility as defined in the notification #173 issued by Ministry of Internal Affairs and Communications on March 28, 2006, based on Sub-section 1.1 of Article 6 of the Ministry's Rule for Enforcement of Radio Law of Japan,
2. Use this product only after you obtained the license of Test Radio Station as provided in Radio Law of Japan with respect to this product, or
3. Use of this product only after you obtained the Technical Regulations Conformity Certification as provided in Radio Law of Japan with respect to this product. Also, please do not transfer this product, unless you give the same notice above to the transferee. Please note that if you could not follow the instructions above, you will be subject to penalties of Radio Law of Japan.

Texas Instruments Japan Limited
(address) 24-1, Nishi-Shinjuku 6 chome, Shinjuku-ku, Tokyo, Japan

<http://www.tij.co.jp>

【無線電波を送信する製品の開発キットをお使いになる際の注意事項】

本開発キットは技術基準適合証明を受けておりません。

本製品のご使用に際しては、電波法遵守のため、以下のいずれかの措置を取っていただく必要がありますのでご注意ください。

1. 電波法施行規則第6条第1項第1号に基づく平成18年3月28日総務省告示第173号で定められた電波暗室等の試験設備でご使用いただく。
2. 実験局の免許を取得後ご使用いただく。
3. 技術基準適合証明を取得後ご使用いただく。

なお、本製品は、上記の「ご使用にあたっての注意」を譲渡先、移転先に通知しない限り、譲渡、移転できないものとします。

上記を遵守頂けない場合は、電波法の罰則が適用される可能性があることをご留意ください。

日本テキサス・インスツルメンツ株式会社
東京都新宿区西新宿6丁目24番1号
西新宿三井ビル

<http://www.tij.co.jp>

EVALUATION BOARD/KIT/MODULE (EVM) WARNINGS, RESTRICTIONS AND DISCLAIMERS

For Feasibility Evaluation Only, in Laboratory/Development Environments. Unless otherwise indicated, this EVM is not a finished electrical equipment and not intended for consumer use. It is intended solely for use for preliminary feasibility evaluation in laboratory/development environments by technically qualified electronics experts who are familiar with the dangers and application risks associated with handling electrical mechanical components, systems and subsystems. It should not be used as all or part of a finished end product.

Your Sole Responsibility and Risk. You acknowledge, represent and agree that:

1. You have unique knowledge concerning Federal, State and local regulatory requirements (including but not limited to Food and Drug Administration regulations, if applicable) which relate to your products and which relate to your use (and/or that of your employees, affiliates, contractors or designees) of the EVM for evaluation, testing and other purposes.
2. You have full and exclusive responsibility to assure the safety and compliance of your products with all such laws and other applicable regulatory requirements, and also to assure the safety of any activities to be conducted by you and/or your employees, affiliates, contractors or designees, using the EVM. Further, you are responsible to assure that any interfaces (electronic and/or mechanical) between the EVM and any human body are designed with suitable isolation and means to safely limit accessible leakage currents to minimize the risk of electrical shock hazard.
3. Since the EVM is not a completed product, it may not meet all applicable regulatory and safety compliance standards (such as UL, CSA, VDE, CE, RoHS and WEEE) which may normally be associated with similar items. You assume full responsibility to determine and/or assure compliance with any such standards and related certifications as may be applicable. You will employ reasonable safeguards to ensure that your use of the EVM will not result in any property damage, injury or death, even if the EVM should fail to perform as described or expected.
4. You will take care of proper disposal and recycling of the EVM's electronic components and packing materials.

Certain Instructions. It is important to operate this EVM within TI's recommended specifications and environmental considerations per the user guidelines. Exceeding the specified EVM ratings (including but not limited to input and output voltage, current, power, and environmental ranges) may cause property damage, personal injury or death. If there are questions concerning these ratings please contact a TI field representative prior to connecting interface electronics including input power and intended loads. Any loads applied outside of the specified output range may result in unintended and/or inaccurate operation and/or possible permanent damage to the EVM and/or interface electronics. Please consult the EVM User's Guide prior to connecting any load to the EVM output. If there is uncertainty as to the load specification, please contact a TI field representative. During normal operation, some circuit components may have case temperatures greater than 60°C as long as the input and output are maintained at a normal ambient operating temperature. These components include but are not limited to linear regulators, switching transistors, pass transistors, and current sense resistors which can be identified using the EVM schematic located in the EVM User's Guide. When placing measurement probes near these devices during normal operation, please be aware that these devices may be very warm to the touch. As with all electronic evaluation tools, only qualified personnel knowledgeable in electronic measurement and diagnostics normally found in development environments should use these EVMs.

Agreement to Defend, Indemnify and Hold Harmless. You agree to defend, indemnify and hold TI, its licensors and their representatives harmless from and against any and all claims, damages, losses, expenses, costs and liabilities (collectively, "Claims") arising out of or in connection with any use of the EVM that is not in accordance with the terms of the agreement. This obligation shall apply whether Claims arise under law of tort or contract or any other legal theory, and even if the EVM fails to perform as described or expected.

Safety-Critical or Life-Critical Applications. If you intend to evaluate the components for possible use in safety critical applications (such as life support) where a failure of the TI product would reasonably be expected to cause severe personal injury or death, such as devices which are classified as FDA Class III or similar classification, then you must specifically notify TI of such intent and enter into a separate Assurance and Indemnity Agreement.

Mailing Address: Texas Instruments, Post Office Box 655303, Dallas, Texas 75265
Copyright © 2013, Texas Instruments Incorporated