

Technical Description

The CC85xxHeadset, see Figure 1, based on the Texas Instruments' CC8531, is SoC for streaming wireless audio, the CC85xxHeadset also includes the CC2590 which is a integrated Power amplifier and Low Noise amplifier. The CC85xxHeadset is pre-programmed and the output power level is fixed

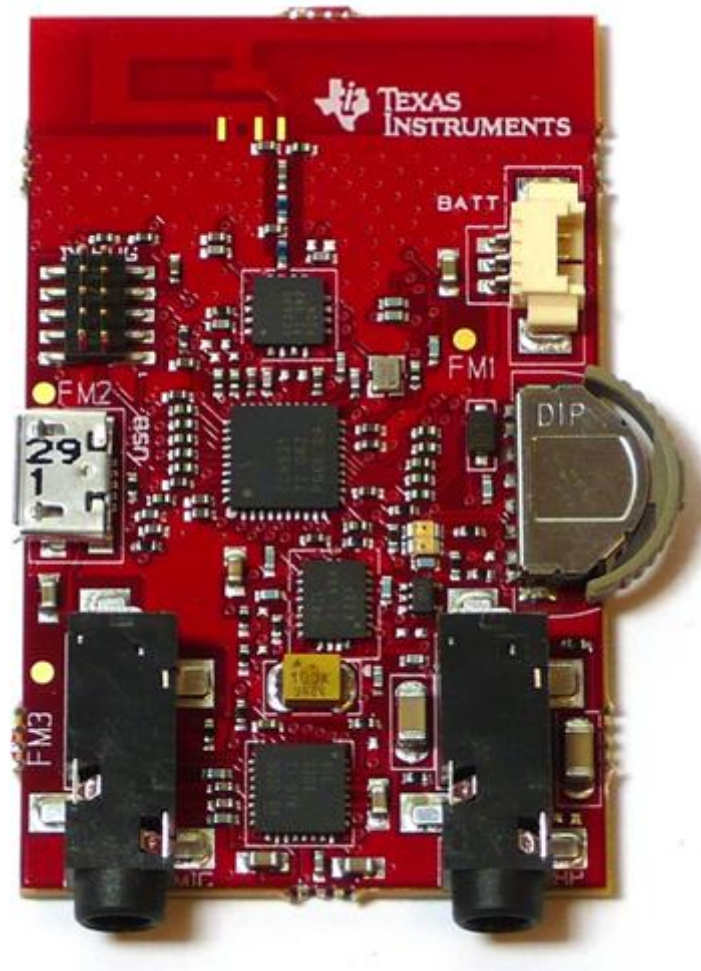


Figure 1 CC85xxHeadset



Gaustadalléen 21
0349 Oslo
Norway

(+47) 22 95 85 44
(+47) 22 95 85 46

Antenna description

The CC85xxHeadset has an integrated inverted-F PCB antenna, see Figure 2.

The typical output power of the CC8531 together with the CC2590 device is 11 dBm on 2440 MHz, the insertion loss in the balun, is typically 0.6 dB and the maximum e.i.r.p. was measured to be 16 dBm, i.e. the maximum antenna gain would be:

Maximum e.i.r.p.:	16 dBm
Insertion loss:	0.6 dB
Conducted output power:	11 dBm

Maximum antenna gain:	4.4 dB
-----------------------	--------



Figure 2 CC85xxHeadset PCB antenna