

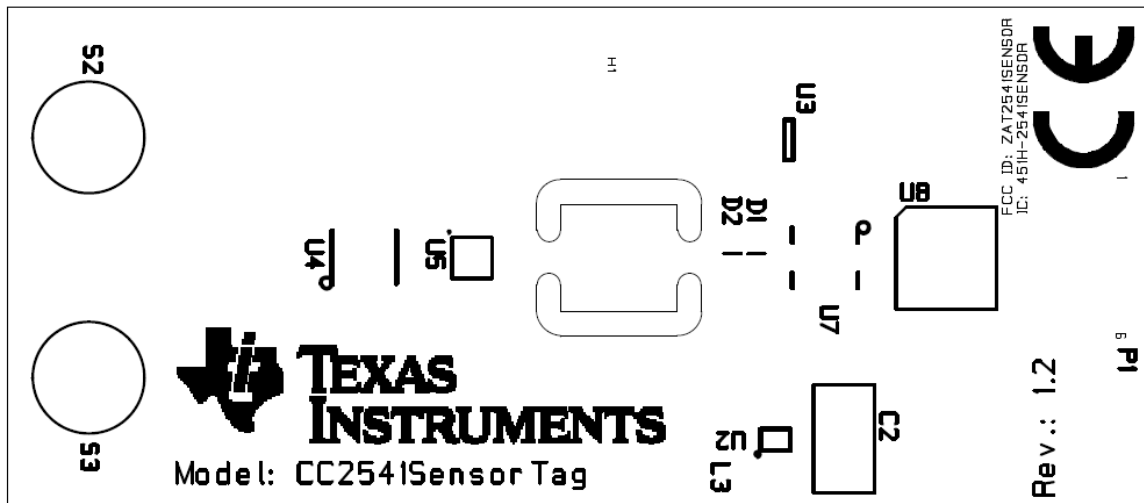


Gaustadalléen 21
0349 Oslo
Norway

(+47) 22 95 85 44
(+47) 22 95 85 46

Description of label for CC2541SensorTag

FCC/IC and CE labeling of the CC2541SensorTag product is shown below. The model name, FCC ID, IC number and CE logo are printed directly on the circuit board (PCB). There is a separate label with revision number and production date on the PCB. On the ESD bag there is a separate label with the FCC ID, IC number, model name and revision number.



(Board size approx. 25mm x 57mm)

Label on ESD bag:

Model: CC2541SensorTag
FCC ID: ZAT2541SENSOR
IC: 451H-2531SENSOR
Rev.: x.x
YYMM

Label on PCB (revision number and production year and month):

x.x
YYMM