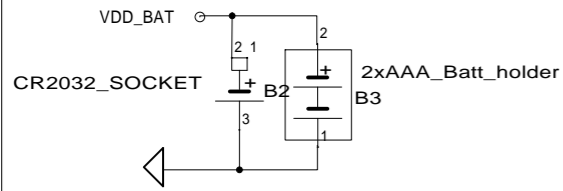
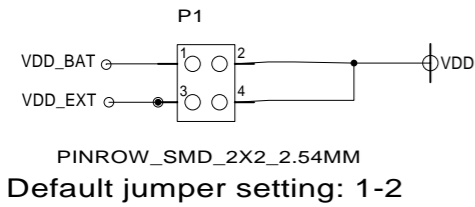


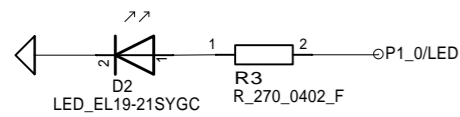
BATTERY SOLUTION



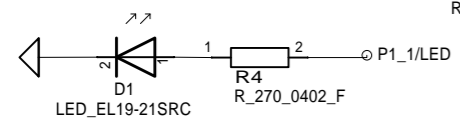
POWER SUPPLY JUMPER



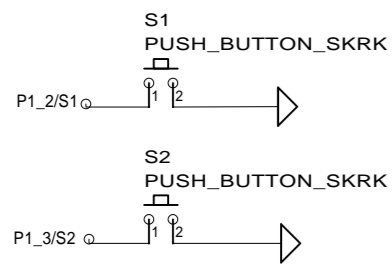
GREEN LED



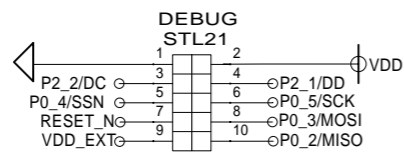
RED LED



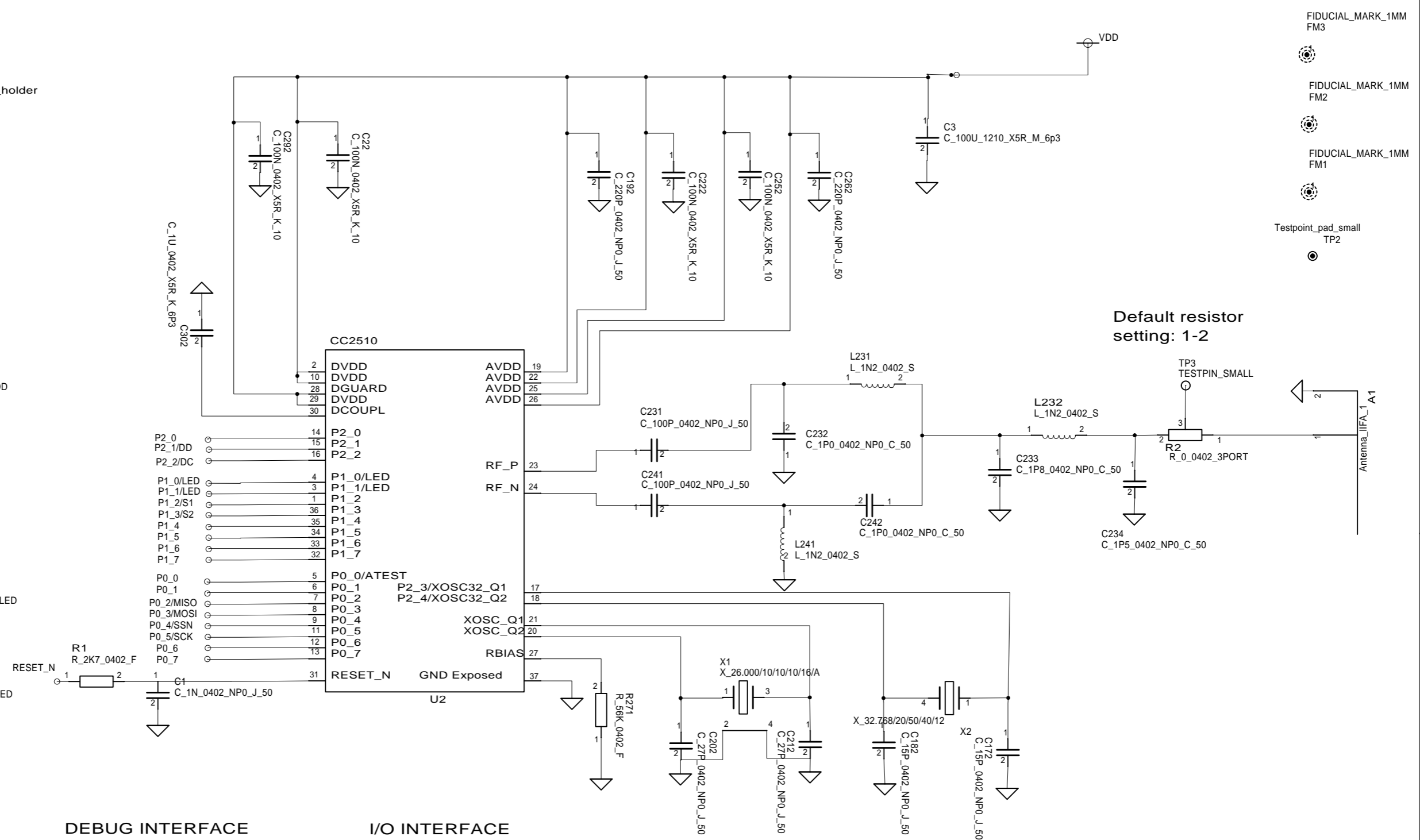
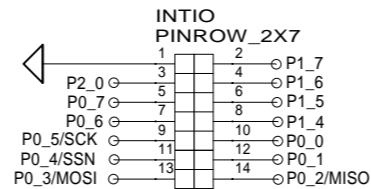
PUSH BUTTONS



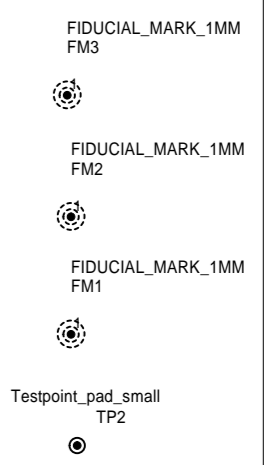
DEBUG INTERFACE



I/O INTERFACE



Default resistor setting: 1-2



Not mount: INTIO.

CONTRACT NO. 025114		COMPANY NAME Texas Instruments Norway			
APPROVALS	DATE	DWG SMARTRFCC2510			
DRAWN	PEH	SIZE A3	FSCM NO.	DWG NO.	REV. 1.1
CHECKED		SCALE			SHEET 1 (1)
ISSUED					